

FOUNDATION PLAN
SCALE: 1/4"=1'-0"



GENERAL NOTES:

- G1. CONCRETE SLAB ON GRADE TO BE COORDINATE W/ OWNER FOR FINISH & REQUIREMENTS
- G2. SITE WORK - ALL FOOTINGS SHALL BEAR ON FIRM, UNDISTURBED SOIL OR APPROVED COMPACTED FILL WITH A MINIMUM BEARING CAPACITY OF 3000 PSF
- G3. CONCRETE FOR FOOTINGS & FOUNDATION WALLS SHALL BE STANDARD WEIGHT 3000 PSI COMPRESSIVE STRENGTH AT 28 DAYS. CONC. FOR SLAB SHALL BE MIN. 3000 PSI
- G4. CONCRETE WORK SHALL COMPLY WITH ACI 318 & 318.1
- G5. SET 1/2" DIA. ANCHOR BOLTS AT 4'-0" O.C. AT PERIMETER & NO MORE THAN 12" FROM CORNERS & OPENINGS

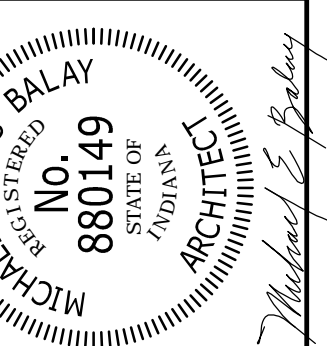
KEY NOTES:

- 1 SAWCUT CONTROL JOINT IN SLAB.
- 2 4" CONC. SLAB REINF. W/ 6x6-W1.4xW1.4 WWR 8" MIN. COMPACTED STONE BASE
- 3 FLOOR DRAIN LOCATION. SEE PLUMBING PLANS
- 4 FOUNDATION FOR ENTRY GATE. COORDINATE ALL REQUIREMENTS W/ OWNER & GATE SUPPLIER

THE CONSTRUCTION DOCUMENTS ARE INSTRUMENTS OF SERVICE PREPARED BY THE ARCHITECT IN ACCORDANCE WITH THE PROFESSIONAL STANDARDS AND ETHICS OF THE ARCHITECTS IN THE STATE OF INDIANA. THE ARCHITECT'S LIABILITY IS LIMITED TO THE PROFESSIONAL SERVICES PROVIDED BY THE ARCHITECT.

A NEW POOL HOUSE FOR
**MCCORD POINTE
 POOL HOUSE**
 MCCORDSVILLE, INDIANA

LENNAR
 9880 TRAFFORD COURT
 MCCORDSVILLE, INDIANA



Michael E. Balay
 Architects
 1100 N. W. 10th St.
 Indianapolis, IN 46202
 Tel: (317) 219-6615
 mibee@balayarchitects.com

DATE	BY	DESCRIPTION
08/04/2020	MEB	STATE SUBMITTAL SET

GEN. CODE NOTES:

G1. [Symbol] DENOTES DIRECTION OF EGRESS AND EXIT DOORS. EXIT DOORS WITH KEY LOCKS MUST BE OPENABLE FROM THE SIDE WHICH EGRESS IS TO BE MADE WITHOUT THE USE OF A KEY OR SPECIAL KNOWLEDGE
G2. ALL INTERIOR FINISH MATERIALS MUST COMPLY WITH THE REQUIREMENTS OF THE INTERNATIONAL BUILDING CODE AS ADOPTED BY THE STATE OF INDIANA
G3. PROVIDE FIRE EXTINGUISHERS PER IFC TABLE 906.3(2), MODERATE HAZARD 20-B RATING EXTINGUISHERS IN LOCATIONS SO THAT MAXIMUM TRAVEL DISTANCE IS 50 FEET. EXACT LOCATIONS SHALL BE DETERMINED BY LOCAL FIRE DEPARTMENT

CODE NOTES:

APPLICABLE CODES:
2014 INDIANA BUILDING CODE (IBC)
2014 INDIANA FIRE CODE (IFC)
GENERAL ADMINISTRATIVE RULES, 2ND EDITION
SCOPE OF PROJECT:
SEASONAL POOL HOUSE / RESTROOMS
BUILDING TYPE & OCCUPANCY CLASSIFICATIONS
TYPE OF CONSTRUCTION: TYPE V-B
OCCUPANCY CLASSIFICATIONS: A-3
FLOOR AREA
USE GROUP A-3 = 1,214 SF
ALLOWABLE AREA
A-3, TYPE V-B, NON-SPRINKLED = 6,000 SF

GENERAL NOTES:

G1. ALL DIMENSIONS OF INTERIOR WALLS ARE TO FACE OF STUD UNLESS OTHERWISE NOTED.
G2. ALL DIMENSIONS OF EXTERIOR WALLS ARE TO OUTSIDE FACE OF STUD. (SEE SECTIONS & STRUCTURAL DETAILS), TYPICAL UNLESS OTHERWISE NOTED.
G3. USE 2x4 WOOD STUDS AT 16" O.C. WITH 1/2" GYPSUM BOARD BOTH SIDES FOR ALL INTERIOR STUD WALLS UNLESS OTHERWISE NOTED.
G4. REFERENCE LOCAL CODE FOR REQUIRED FIRE EXTINGUISHER LOCATIONS.
G5. ALL FINISHES/MATERIAL COLORS TO BE COORDINATED BY OWNER.
G6. PRIOR TO INSTALLATION, C.C. TO CONSULT W/ OWNER FOR EXACT REQUIREMENTS FOR TOILET ACCESSORIES. REFER TO MANUFACTURER'S INSTRUCTIONS FOR FIXTURE & PARTITION INSTALLATION DETAILS.
G7. PROVIDE A.D.A. ACCESSIBLE ACCESSORIES AS REQUIRED PER CODE. SEE SHEET AS
G8. SEE SHEET AS FOR ENLARGED RESTROOM PLANS & A.D.A. DETAILS

DOOR SCHEDULE

- (A) 3'-0" W. x 7'-0" H. COMMERCIAL HOLLOW METAL 6 PANEL DOOR(S) & HOLLOW METAL FRAMES. PAINT TO MATCH TRIM. KWIKSET DOOR HARDWARE. COORDINATE ALL REQUIREMENTS W/ OWNER
- (B) SAME AS DOOR 'A' EXCEPT 3'-6" W.

WINDOW SCHEDULE

- (A) WINDOW BY MI TO BE 4300 SINGLE HUNG - VENT - 2550 (29.5"x59.75") SOLID VINYL WINDOW W/ INSULATED TEMPERED GLASS, LOW-E & OBSCURE

ROOM FINISHES:

- [123] = ROOM NUMBER
- F-xx = FLOOR TYPE
- B-xx = BASE TYPE
- W-xx = WALL TYPE
- C-xx = CEILING TYPE
- F-01 CONCRETE WITH BROOM FINISH
- B-01 AZEK, PAINTED OR APPROVED EQUAL
- W-01 1/2" GYPSUM BOARD, PAINTED
- W-02 1/2" MOISTURE RESISTANT GYP. BOARD, PAINTED
- W-03 SIDING - SEE ELEVATIONS & SECTIONS
- C-01 5/8" GYPSUM BOARD, PAINTED
- C-02 SOFFIT - SEE ELEVATIONS & SECTIONS

KEY NOTES:

- (1) POOL FENCE BY OTHERS.
- (2) ENTRY GATE W/ FOUNDATION, KEY PAD, CLOSER, ETC. COORDINATE W/ OWNER, SEE ELEVATIONS
- (3) WOOD COLUMN. SEE ROOF FRAMING PLAN, ELEVATIONS & SECTIONS
- (4) DROPPED BEAM. SEE ROOF FRAMING PLAN, ELEVATIONS & SECTIONS
- (5) FLOOR DRAIN. SEE PLUMBING PLANS
- (6) CONC. SIDEWALK. SEE CIVIL PLANS
- (7) POOL DECK DESIGN BY OTHERS
- (8) RECESSED ELECTRICAL BREAKER PANEL. REFER TO SHEET E2
- (9) WALL MOUNTED FIRE EXTINGUISHER BY OWNER
- (10) 2x6 STUD WALL
- (11) PHONE LOCATION. CELL PHONE INSTALLED W/ ACCESS CONTROL. COORDINATE W/ OWNER
- (12) 24"x40" NOM. ATTIC ACCESS PANEL (LOCKABLE)
- (13) WALL LOUVER. SEE ELEVATIONS & MECHANICAL PLANS
- (14) OUTDOOR SHOWER. SEE PLUMBING PLANS

A NEW POOL HOUSE FOR
MCCORD POINTE POOL HOUSE
9880 TRAFFORD COURT
MCCORDSVILLE, INDIANA

LENNAR

Michael E. Balay
No. 880149
STATE OF INDIANA ARCHITECTS

Michael E. Balay
Architects
11000 Poplar Avenue
Indianapolis, Indiana 46208
Tel: (317) 219-6815
michael@balayarchitects.com

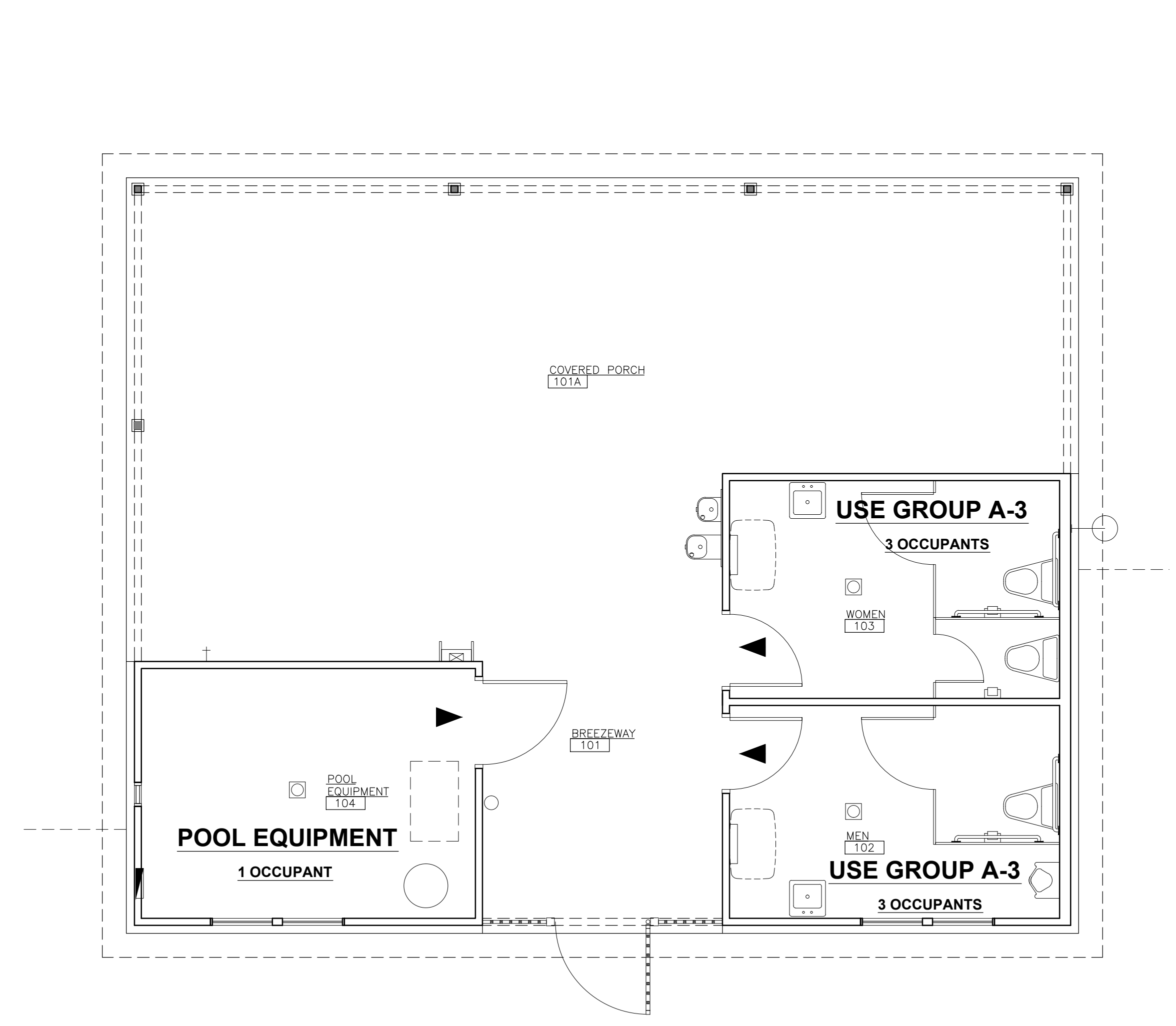
NO.	DATE	BY	DESCRIPTION
1	08/24/2020	MEB	STATE SUBMITTAL SET

PROJECT NO.: 2007
DRAWN BY: ID
MARK
REV DATA

© 2020 BALAY ARCHITECTS, INC.

FIRE & LIFE SAFETY PLAN & FLOOR PLAN

A1

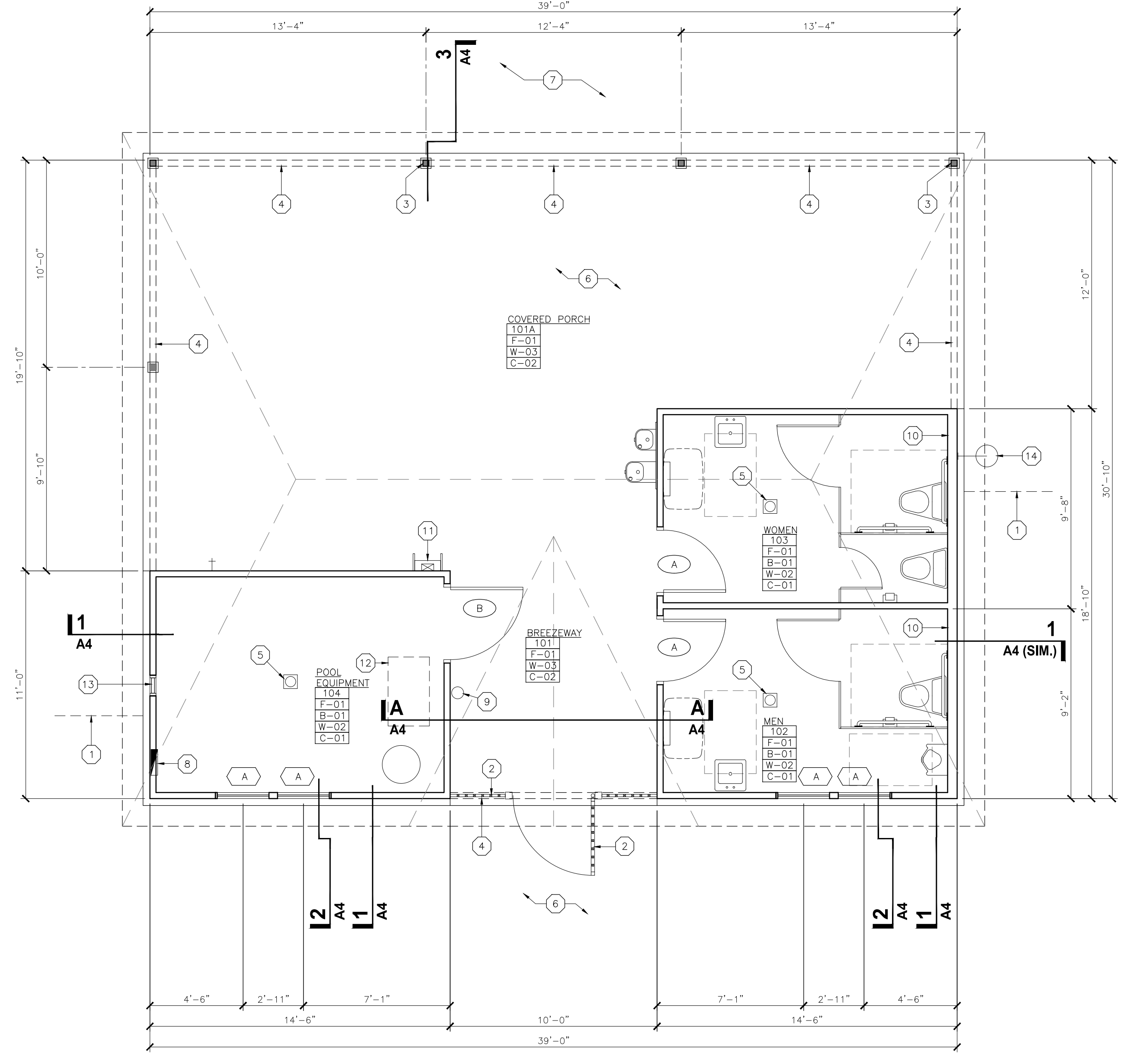


FIRE & LIFE SAFETY PLAN

SCALE: 1/4"=1'-0"



PLAN NORTH
(SEE SITE PLAN)

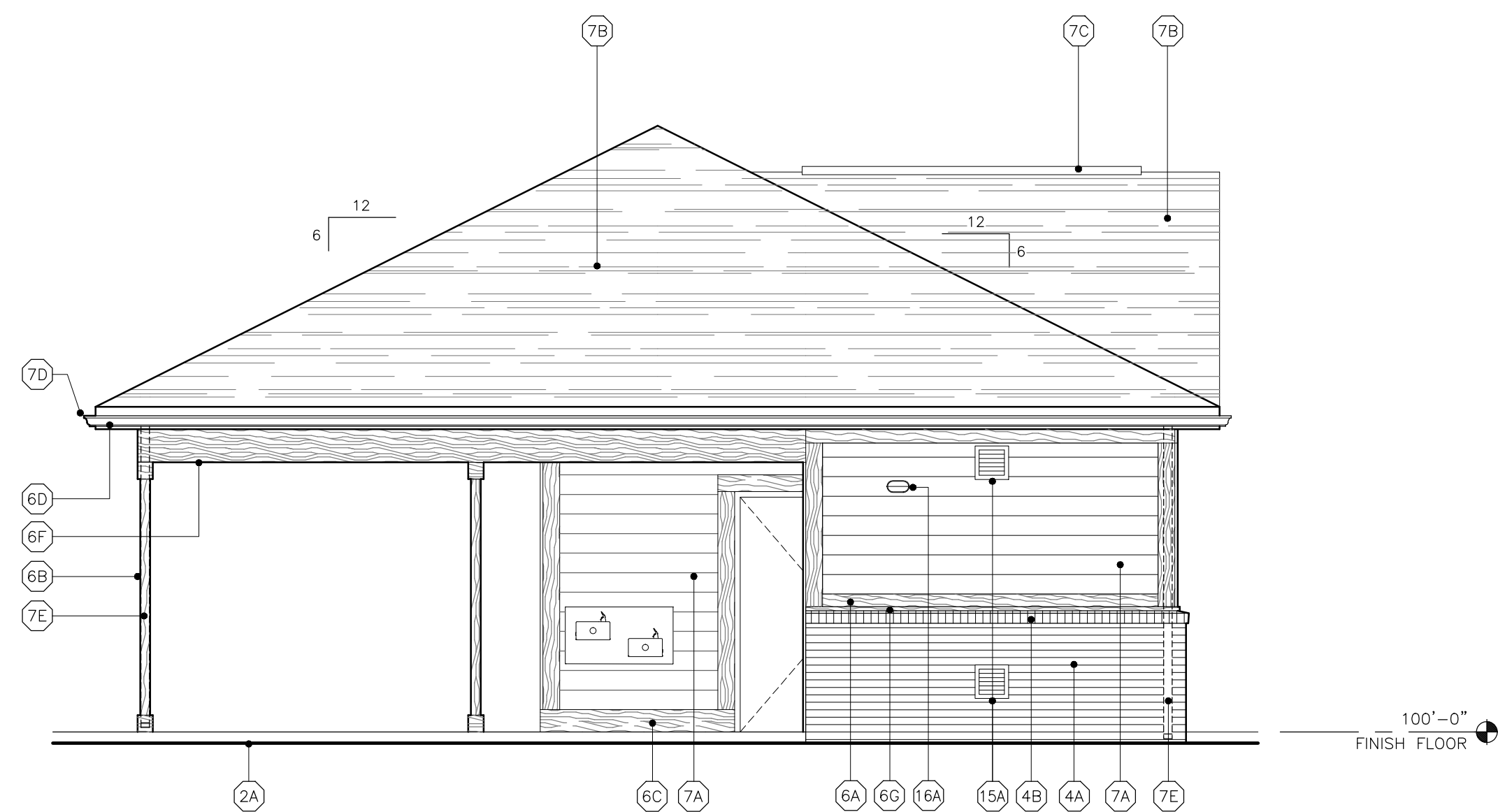


FLOOR PLAN

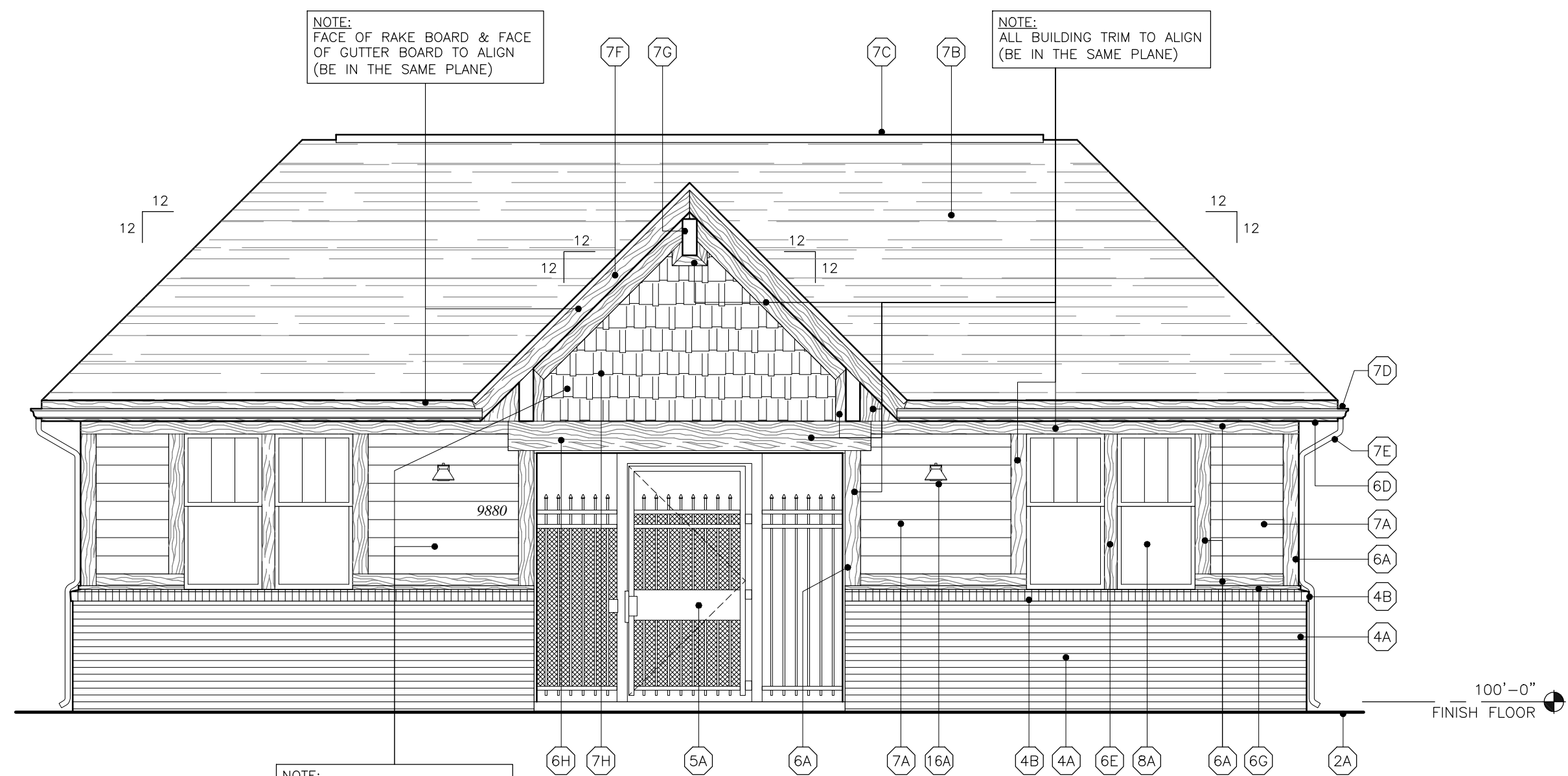
SCALE: 1/4"=1'-0"



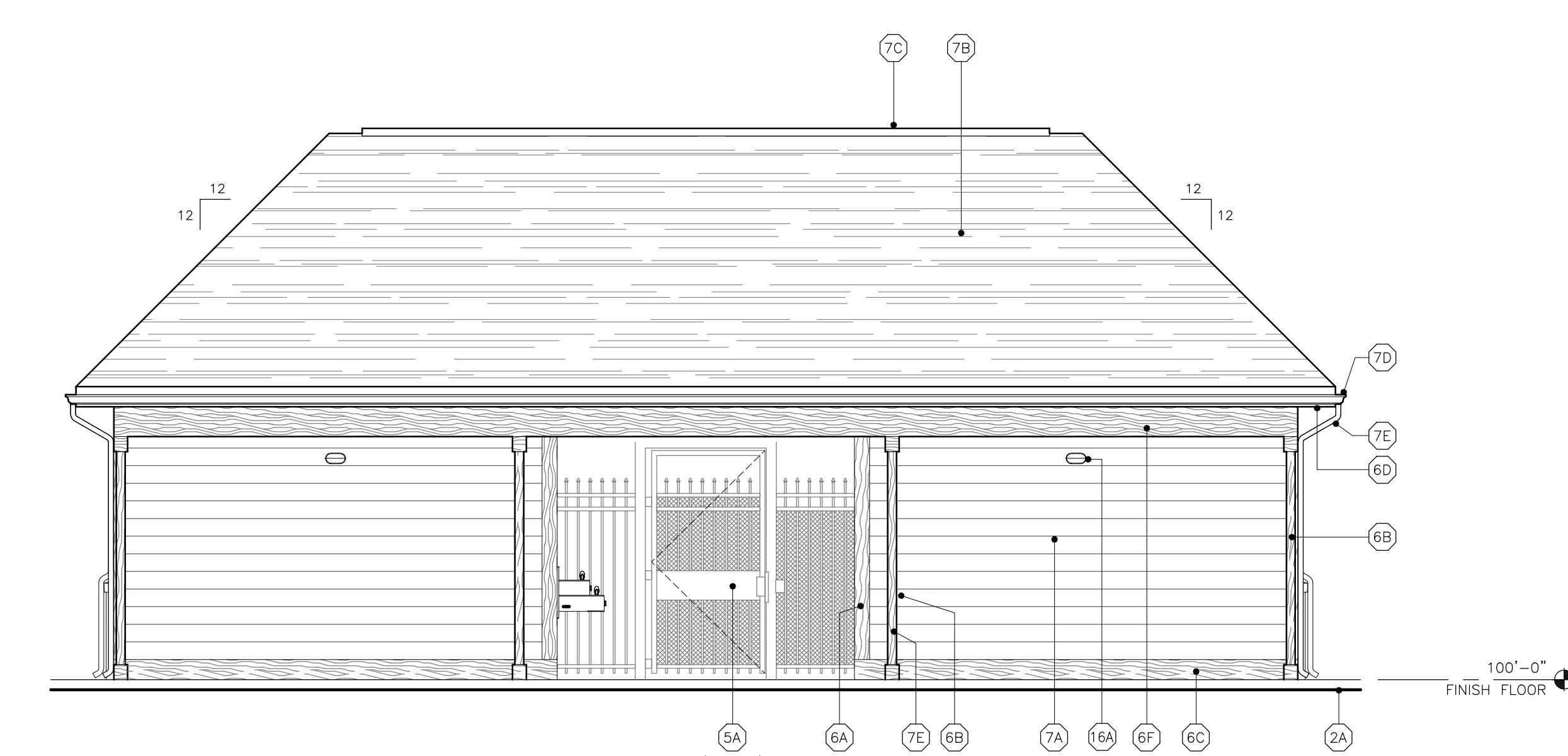
PLAN NORTH
(SEE SITE PLAN)



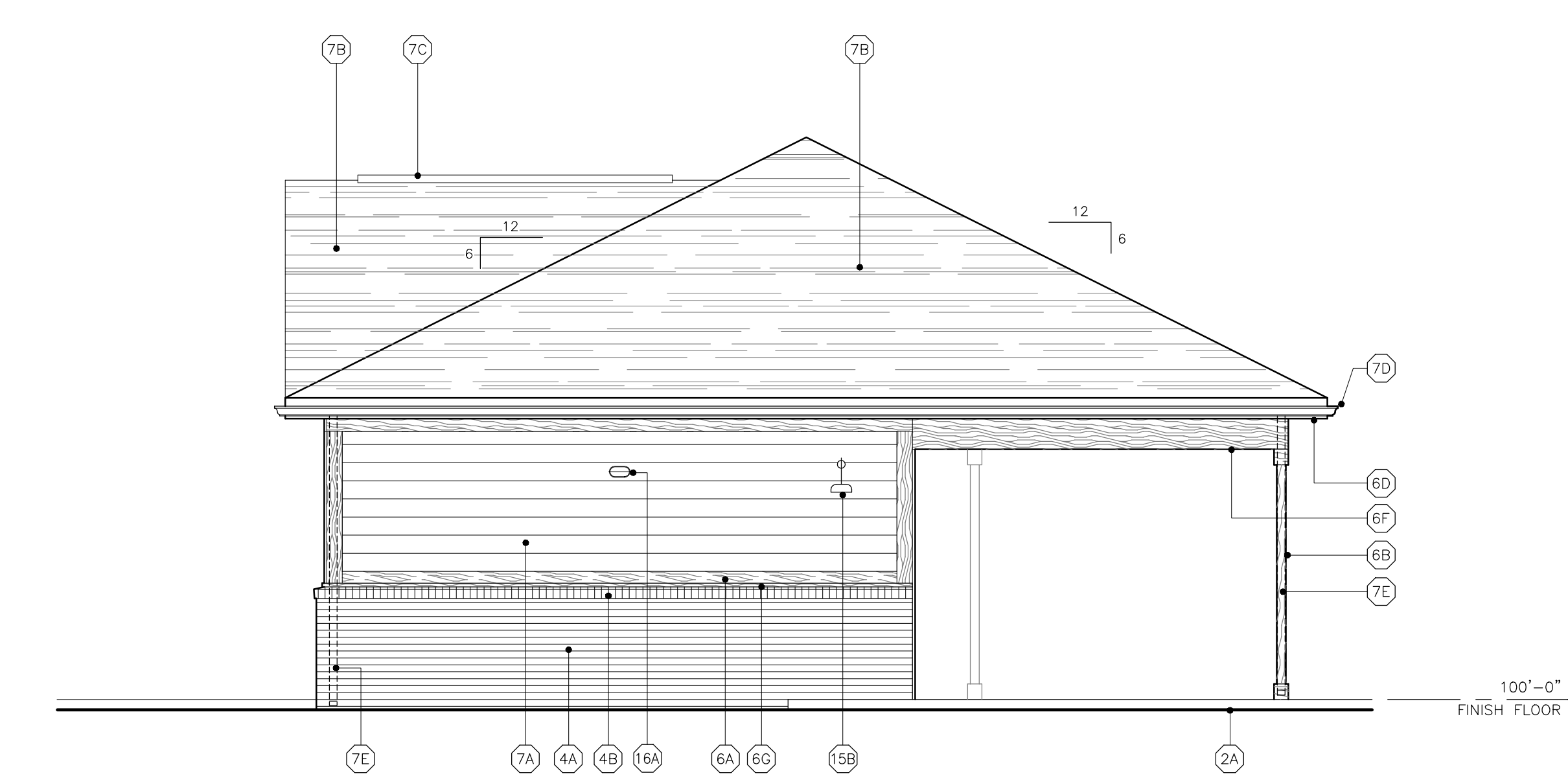
LEFT SIDE ELEVATION
SCALE: 1/4"=1'-0"



FRONT ELEVATION
SCALE: 1/4"=1'-0"



REAR ELEVATION
SCALE: 1/4"=1'-0"



RIGHT SIDE ELEVATION
SCALE: 1/4"=1'-0"

GENERAL NOTES:

G1. COORDINATE ALL PAINT & MATERIAL COLORS WITH OWNER PRIOR TO INSTALLATION AND/OR APPLICATION.

THE CONSTRUCTION DOCUMENTS ARE INSTRUMENTS OF SERVICE PREPARED BY THE ARCHITECT IN ACCORDANCE WITH THE PROFESSIONAL SERVICE AGREEMENT. THE ARCHITECT'S LIABILITY IS LIMITED TO THE DESIGN AND CONSTRUCTION OF THE PROJECT. THE ARCHITECT IS NOT RESPONSIBLE FOR THE ACCURACY OF ANY INFORMATION PROVIDED BY OTHER PROFESSIONALS OR FOR THE CONSTRUCTION OF THE PROJECT. THE ARCHITECT'S LIABILITY IS LIMITED TO THE DESIGN AND CONSTRUCTION OF THE PROJECT.

KEY NOTES:

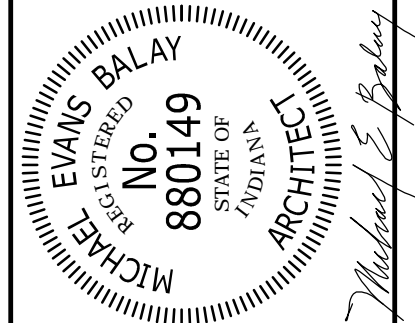
- (2A) FINISH GRADE. SEE SITE PLANS
- (4A) BRICK VENEER
- (4B) BRICK SILL - ROWLOCK COURSE
- (5A) ENTRY GATE. SEE PLAN
- (6A) 5/4x6 LP SMARTTRIM, PAINTED
- (6B) ROUGH SAWN WOOD COLUMN, PAINTED. SEE ROOF FRAMING PLAN
- (6C) 5/4x8 AZEK BASE TRIM, PAINTED
- (6D) 4/4x6 LP SMARTTRIM FASCIA BOARD, PAINTED
- (6E) 5/4 LP SMARTTRIM, PAINTED
- (6F) BEAM, WRAP W/ 4/4 LP SMARTTRIM, PAINTED. SEE ROOF FRAMING PLAN
- (6G) 1x2 AZEK TRIM, PAINTED
- (6H) BEAM, WRAP W/ 5/4 LP SMARTTRIM, PAINTED. SEE ROOF FRAMING PLAN
- (7A) HARDIE COLORPLUS LAP SIDING W/ 7" EXPOSURE. FACTORY FINISH
- (7B) DIMENSIONAL FIBERGLASS SHINGLES OVER RAPTOR SYNTHETIC UNDERLAYMENT
- (7C) CONTINUOUS RIDGE VENT
- (7D) PREFINISHED ALUMINUM GUTTER
- (7E) PREFINISHED ALUMINUM DOWNSPOUT
- (7F) 4/4 LP SMARTTRIM RAKE BOARD, PAINTED
- (7G) 5-1/2"x14" CEDAR OR FYPON DETAIL OR APPROVED EQUAL
- (7H) HARDIE COLORPLUS SHINGLE SIDING. FACTORY FINISH
- (8A) WINDOW. SEE FLOOR PLAN
- (15A) 12"x12" WALL LOUVER. SEE MECHANICAL PLANS
- (15B) OUTDOOR SHOWER. SEE PLUMBING PLANS
- (16A) WALL MOUNTED LIGHT FIXTURE. SEE ELECTRICAL PLANS

A NEW POOL HOUSE FOR
MCCORD POINTE POOL HOUSE

MCCORDSVILLE, INDIANA

9880 TRAFFORD COURT

LENNAR

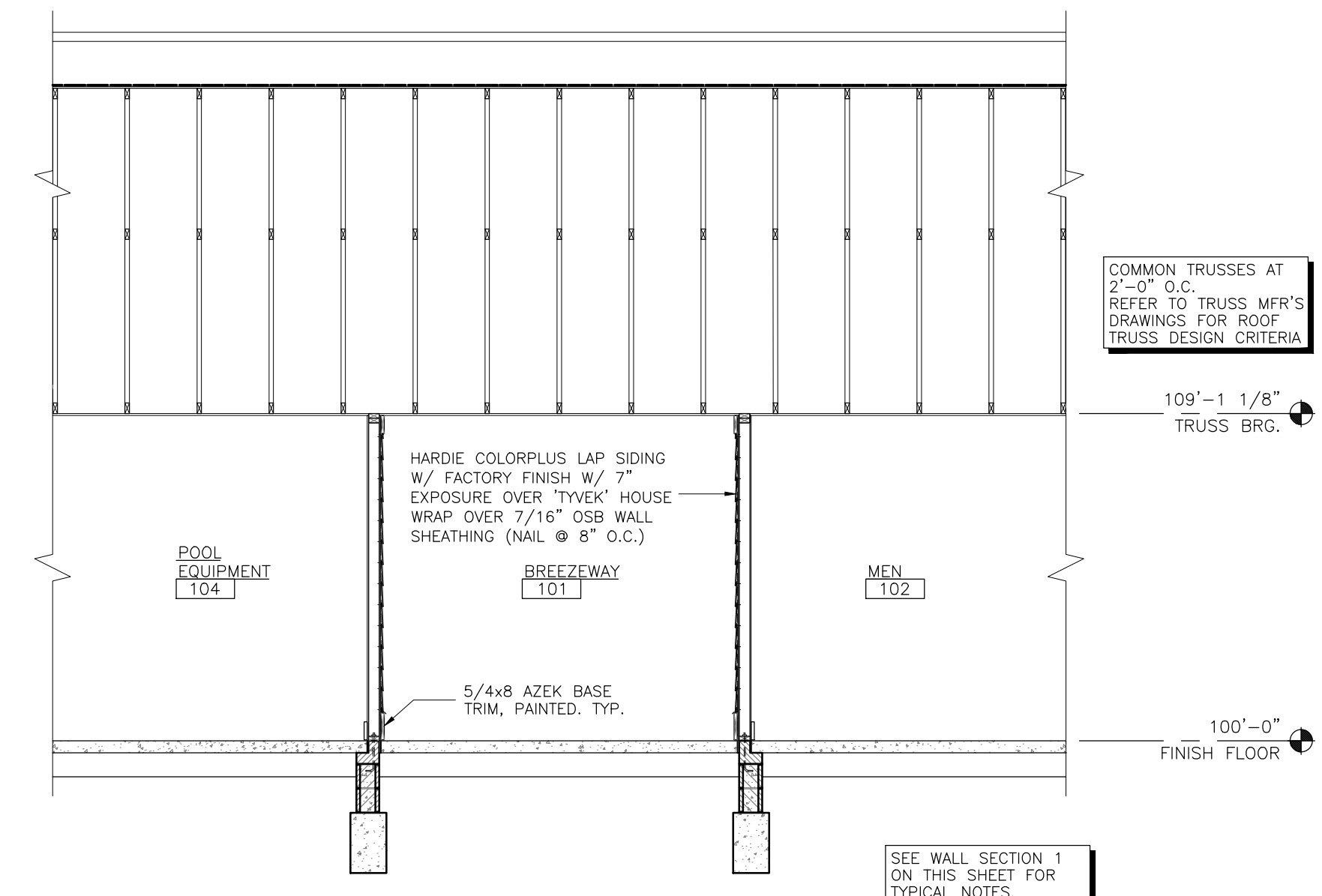


Michael E. Balay
Architects
1100 N. W. 11th St., Suite 100
Coral Gables, FL 33134
Tel: (305) 441-1111
michael@balayarchitects.com

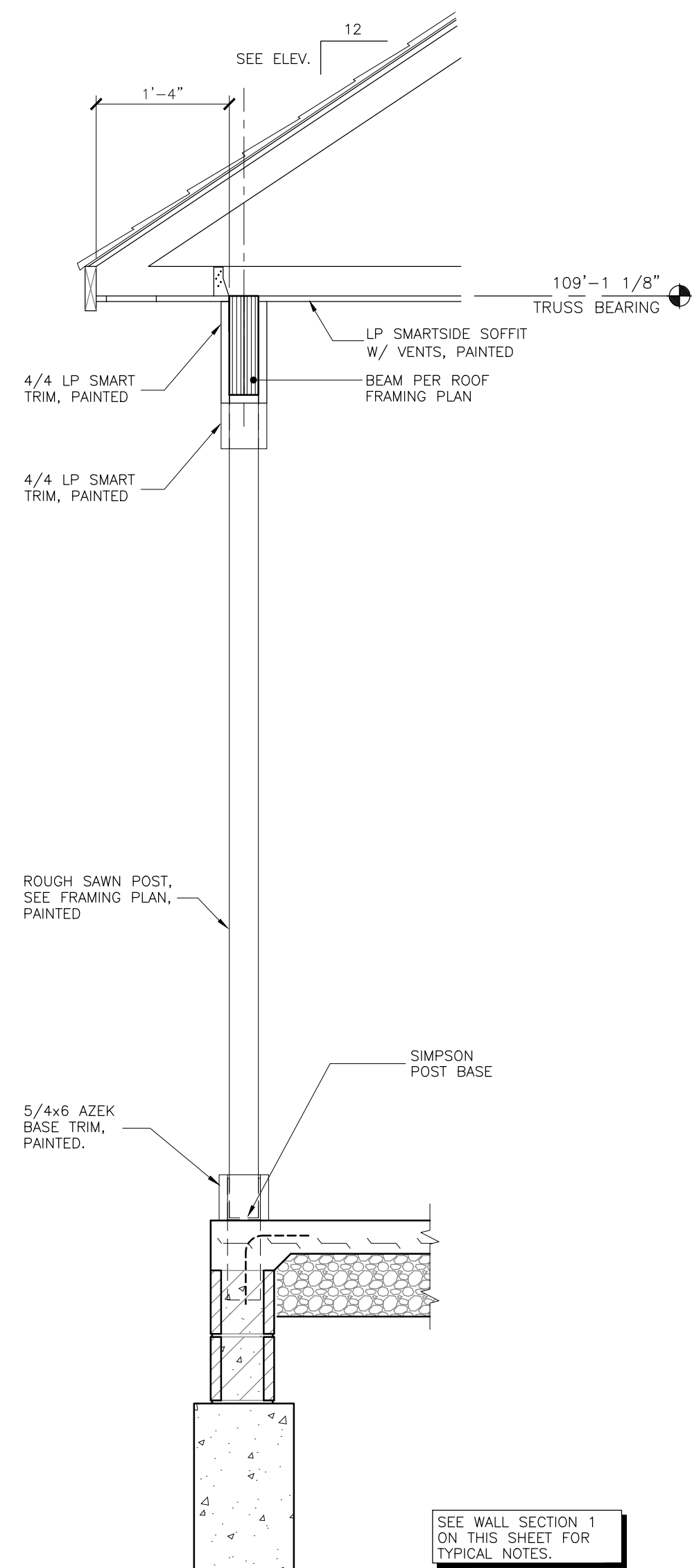
PRODUCT NO.	DATE	INITIALS	DESCRIPTION
2007	08/04/2020	MEB	STATE SUBMITTAL SET

© 2020 BALAY ARCHITECTS, INC.

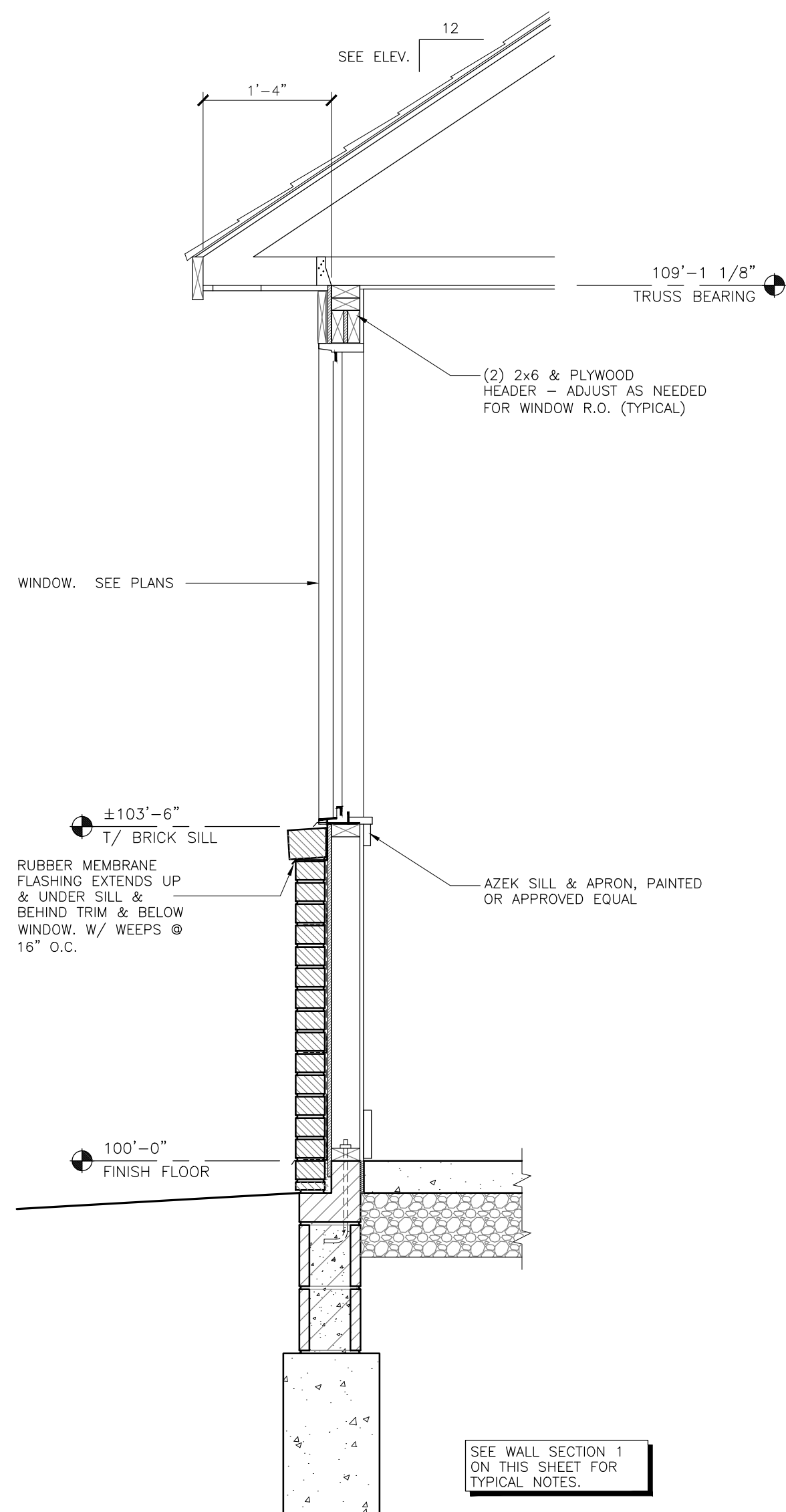
EXTERIOR ELEVATIONS



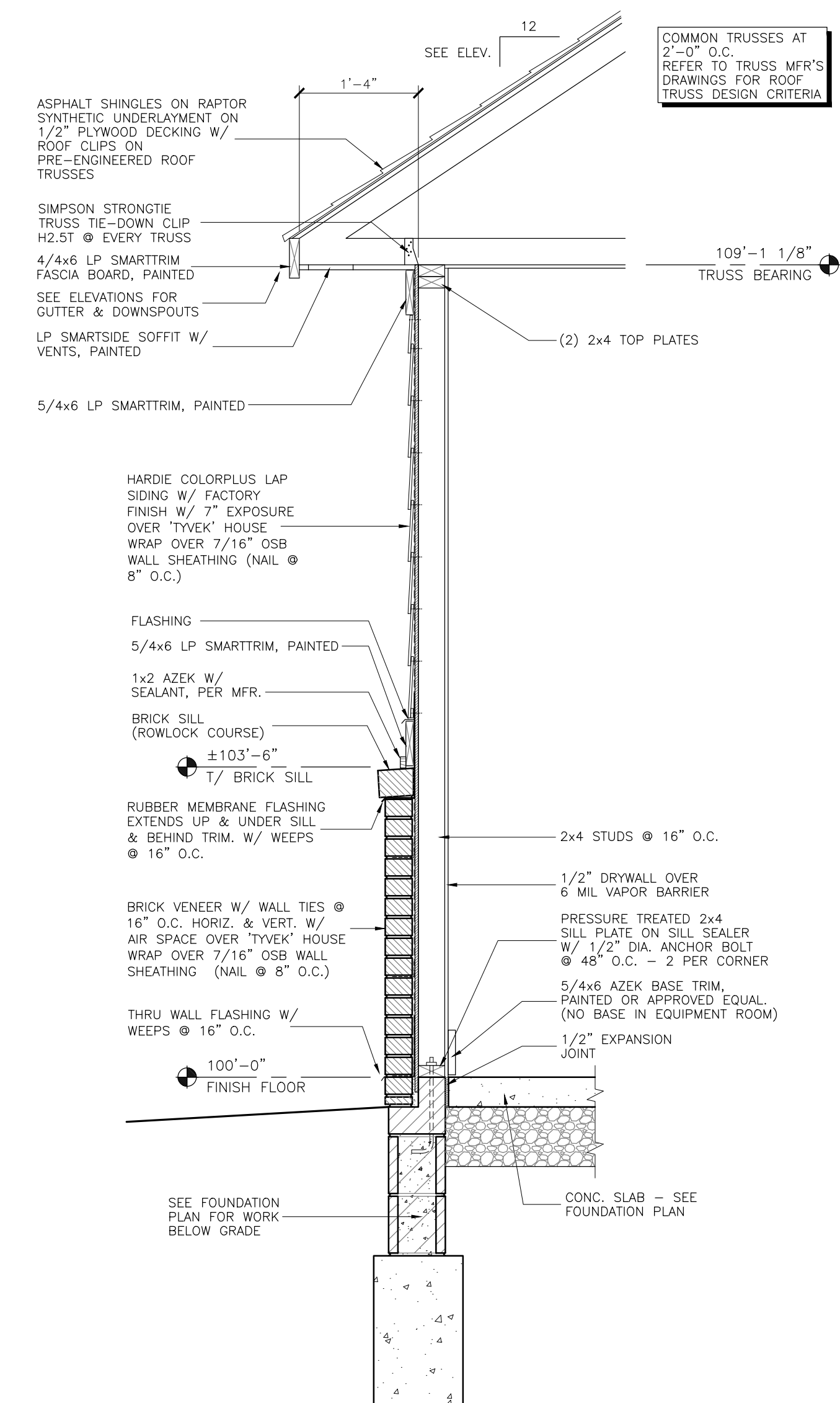
PARTIAL BUILDING SECTION A
SCALE: 1/4"=1'-0"



SECTION @ PORCH 3
SCALE: 3/4"=1'-0"



WALL SECTION 2
SCALE: 3/4"=1'-0"



WALL SECTION 1
SCALE: 3/4"=1'-0"

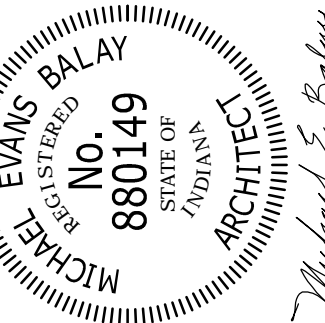
GENERAL NOTES:

G1. SEE FOUNDATION PLANS FOR WORK BELOW FINISH FLOOR.

THE CONSTRUCTION DOCUMENTS ARE INSTRUMENTS OF SERVICE PREPARED BY THE ARCHITECT FOR THE PROJECT. ANY CHANGES MADE TO THE DOCUMENTS SHALL BE MADE BY THE ARCHITECT. THE ARCHITECT SHALL BE RESPONSIBLE FOR THE ACCURACY OF THE DOCUMENTS. THE ARCHITECT SHALL NOT BE RESPONSIBLE FOR THE ACCURACY OF THE INFORMATION PROVIDED BY OTHER PROFESSIONALS OR THE PROJECT PARTICIPANTS.

A NEW POOL HOUSE FOR
MCCORD POINTE POOL HOUSE
9880 TRAFFORD COURT
McCordsville, Indiana

LENNAR



Michael E. Balay
Architects
11000 N. State Road 136
Indianapolis, Indiana 46240
Tel: (317) 219-6615
michael@balayarchitects.com

PROJECT NO.	DATE	DESCRIPTION
2007	08/04/2007	INITIAL SET
		STATE SUBMITTAL SET

BUILDING & WALL SECTIONS

ACCESSORY SCHEDULE

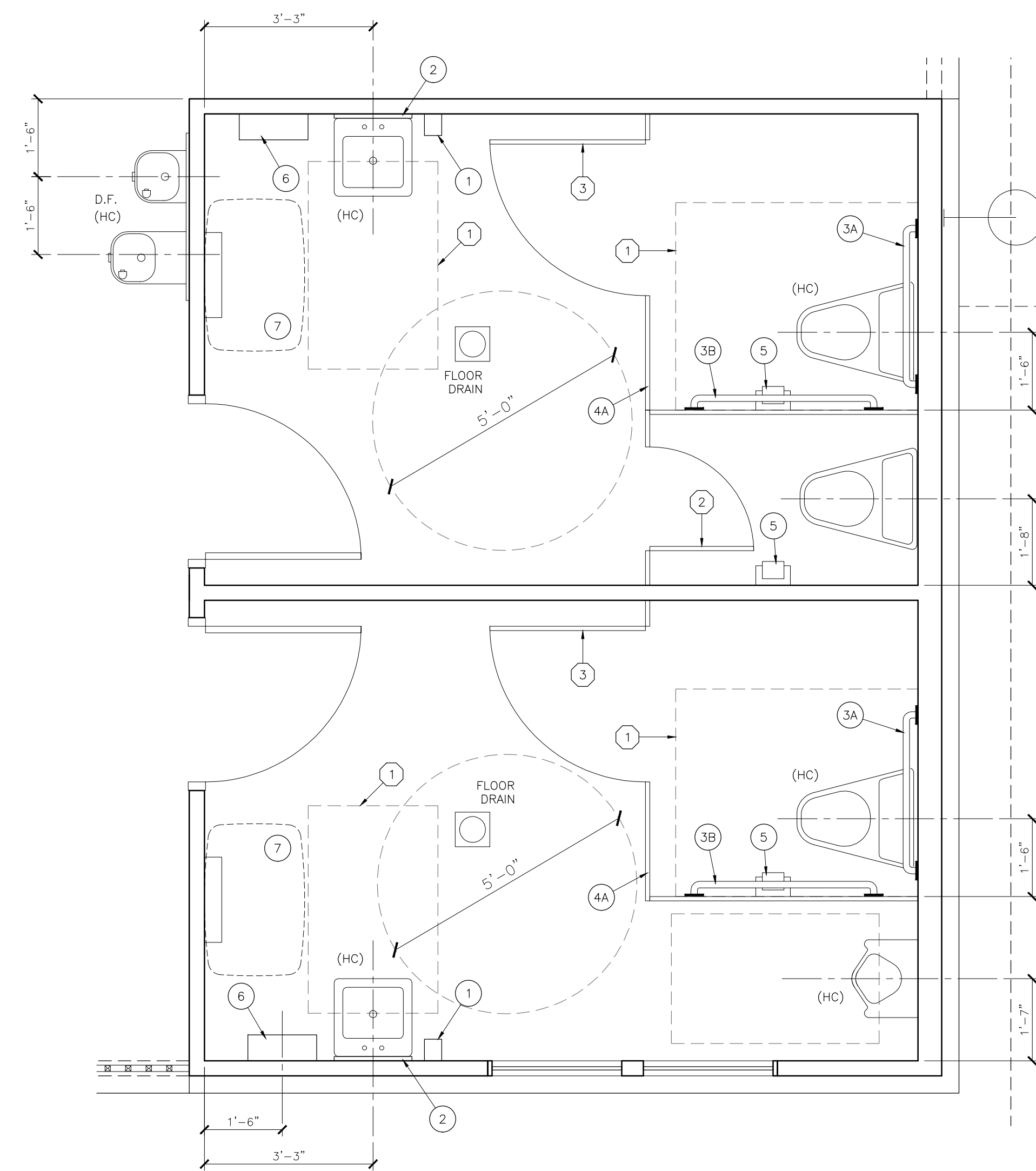
MARK	DESCRIPTION	MANUFACTURER	SIZE (± WxHxD)	MODEL	REMARKS
1	SOAP DISPENSER-WALL MOUNT	BOBRICK	5"x8"x4"	B-132	MOUNT AT 38" FROM BOTTOM TO F.F.
2	MIRROR-SURFACE MOUNT (ADA)	BOBRICK	18"x30"	B-293 1830	MOUNT AT 40" FROM BOTTOM TO F.F.
3A	GRAB BAR-36"	BOBRICK	36"Lx 1 1/2"Ø	B-610x36	MOUNT AT 33" FROM CENTER TO F.F.
3B	GRAB BAR-42"	BOBRICK	42"Lx 1 1/2"Ø	B-610x42	MOUNT AT 33" FROM CENTER TO F.F.
4A	PARTITION-TOILET	BOBRICK	-->	1090 SERIES	SEE PLANS
4B	PARTITION-URINAL	BOBRICK	-->	1090 SERIES	SEE PLANS
5	TOILET PAPER DISPENSER-SURFACE MTD.	BOBRICK	12"x2"x4"	B-6867	MOUNT AT 24" FROM CENTER TO F.F.
6	TOWEL DISP./RECPT.-SURFACE MTD.	BOBRICK	15"x54"x4"	B-3949	MOUNT SO TOWELS ARE MAX. 48" A.F.F.
7	BABY CHANGING STATION-WALL MOUNTED	BOBRICK (KOALA KARE)	36"x24"x4"	KB200	MOUNT PER MFR., KB200 COLOR T.B.D.

GENERAL NOTES:

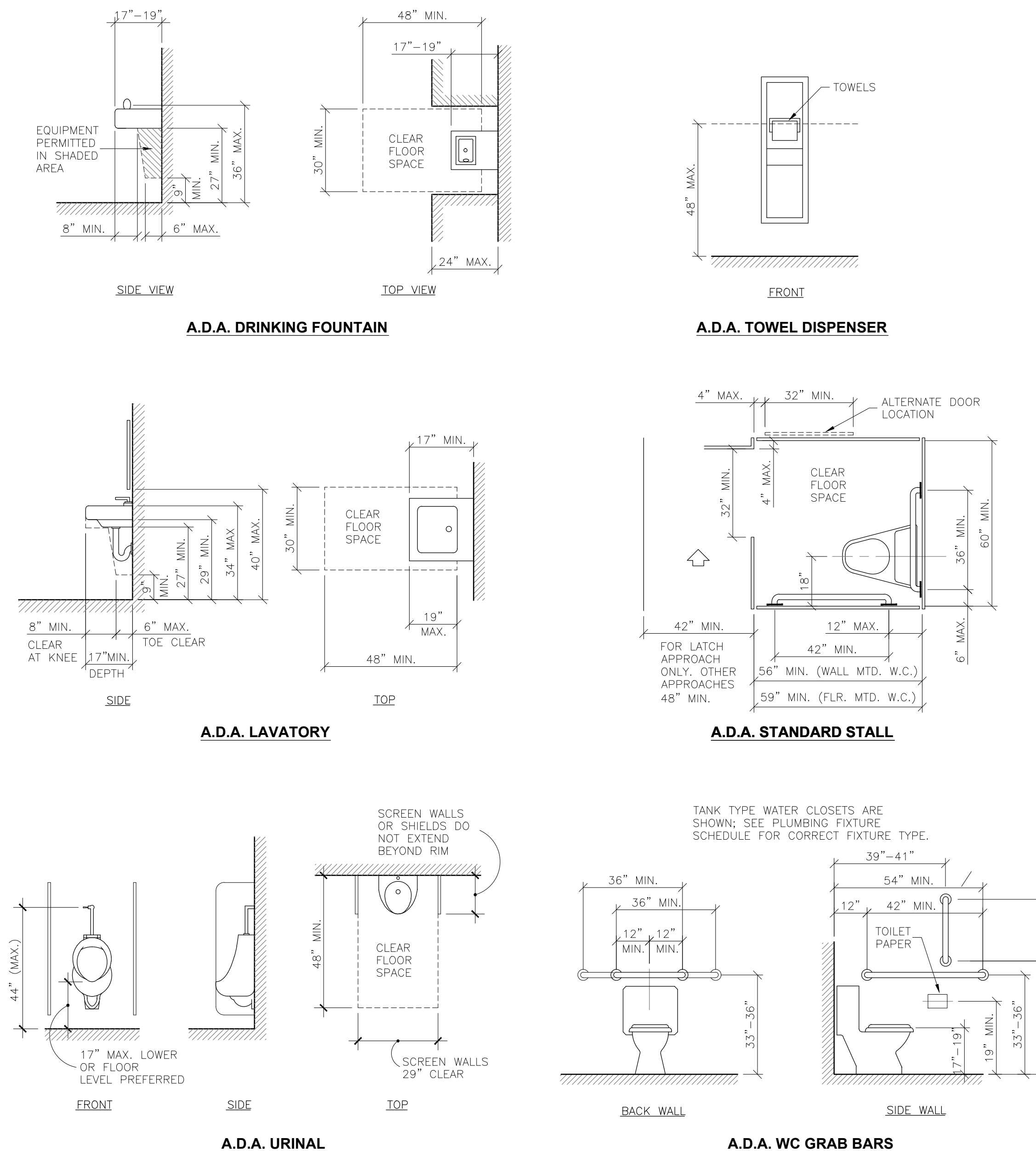
- G1. ALL DIMENSIONS TO WALLS ARE TO FACE OF STUD UNLESS OTHERWISE NOTED.
- G2. (HC) = HANDICAP ACCESSIBLE
- G3. (AD) = HANDICAP ADAPTABLE PROVIDE ADEQUATE BLOCKING.
- G4. SCHEDULED TOILET ACCESSORIES ARE FOR BIDDING PURPOSES ONLY. PRIOR TO INSTALLATION, G.C. TO CONSULT W/ OWNER FOR EXACT REQUIREMENTS FOR TOILET ACCESSORIES.
- G5. RESTROOM A.D.A. DETAILS ARE GENERAL IN NATURE AND SHOW MINIMUM A.D.A. CLEARANCES & REQUIREMENTS ONLY. REFER TO MANUFACTURER'S INSTRUCTIONS FOR FIXTURE & PARTITION INSTALLATION DETAILS.
- G6. PROVIDE ADA ACCESSIBLE ACCESSORIES AS REQUIRED PER CODE.

KEY NOTES:

- 1 A.D.A. ACCESSIBILITY CLEAR AREA
- 2 24" WIDE STALL DOOR
- 3 36" WIDE STALL DOOR



PLAN - WOMEN'S & MEN'S RESTROOM
SCALE: 1/2"=1'-0"



A.D.A. RESTROOM ACCESSIBILITY DETAILS
SCALE: N.T.S.

THE CONSTRUCTION DOCUMENTS ARE INSTRUMENT OF SERVICE PREPARED BY THE ARCHITECT IN ACCORDANCE WITH THE PROFESSIONAL SERVICE CONTRACT AGREEMENT. ANY REVISIONS MADE TO THESE DOCUMENTS SHALL BE THE RESPONSIBILITY OF THE ARCHITECT. THE ARCHITECT'S LIABILITY IS LIMITED TO THE PROFESSIONAL DESIGN AND CONSTRUCTION OF THE PROJECT. THE ARCHITECT DOES NOT WARRANT, REPRESENT, OR GUARANTEE THE ACCURACY OF THE INFORMATION PROVIDED BY THE OWNER OR ANY OTHER SOURCE.

A NEW POOL HOUSE FOR
**MCCORD POINTE
 POOL HOUSE**
 9880 TRAFFORD COURT
 MCCORDSVILLE, INDIANA

LENNAR

EVANS BALAY
 REGISTERED ARCHITECTS
 No. 880149
 STATE OF INDIANA
 MICHAEL E. BALAY ARCHITECTS

PROJECT NO.: 2007
 DRAWN BY: ID
 CHECKED BY: MEB
 DATE: 08/04/2020
 MARK: MEB
 STATE SUBMITTAL SET

PRODUCT NO.: 2007
 DRAWN BY: ID
 CHECKED BY: MEB
 DATE: 08/04/2020
 MARK: MEB
 STATE SUBMITTAL SET

Michael E. Balay
 Architects
 1100 N. Meridian Street
 Indianapolis, IN 46202
 Tel: (317) 219-6815
 m.e.balay@architects.com

INDIANAPOLIS INDIANA
 Michael E. Balay
 ARCHITECTS

DWG. DATA
 REV. DATA

© 2020 BALAY ARCHITECTS, INC.
 RESTROOM PLANS & A.D.A. DETAILS

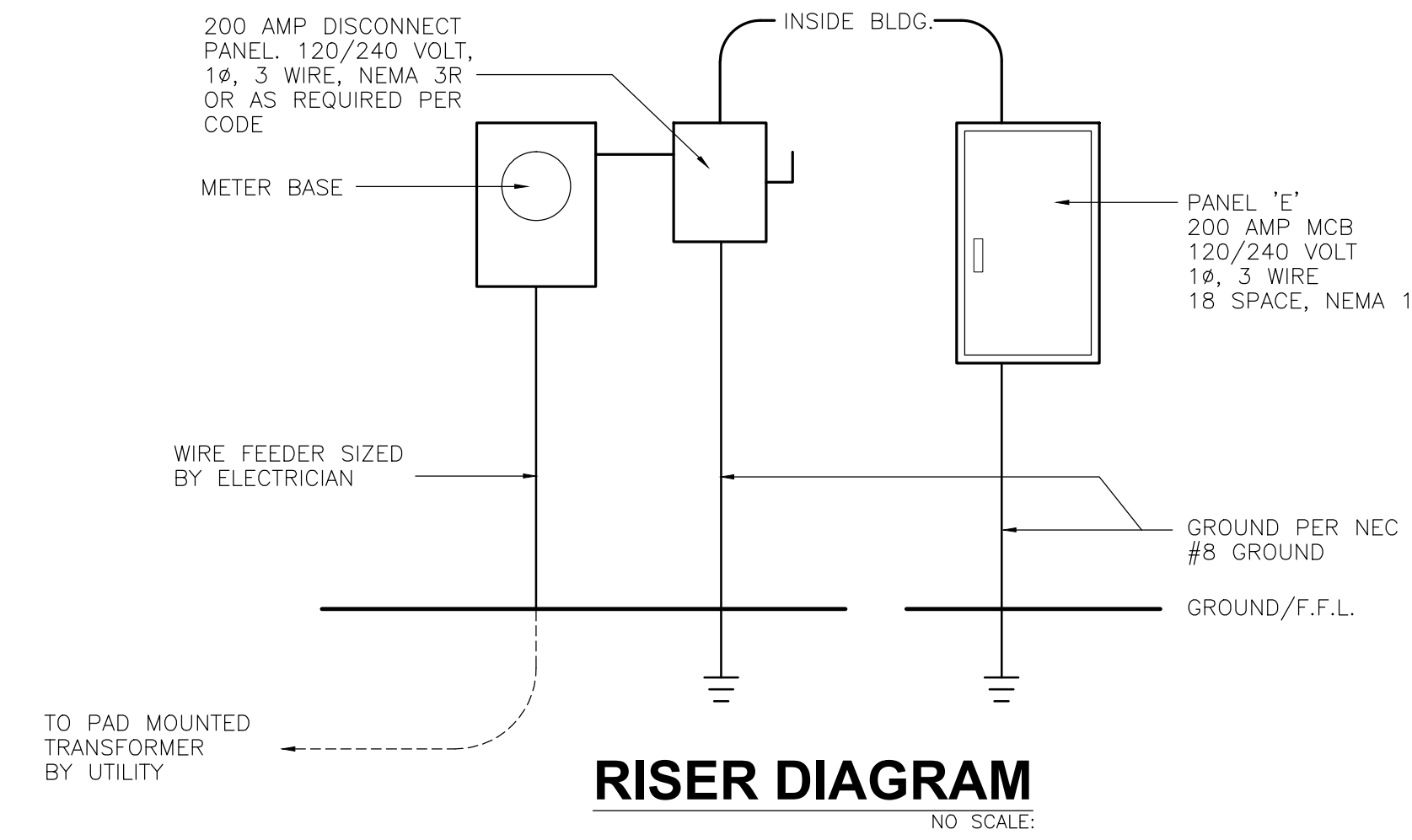
A5

POWER DEVICE SCHEDULE	
ITEM	DESCRIPTION
⊕	20 AMP DUPLEX 120 VOLT WALL OUTLET WITH WHITE MATCHING COVER PLATE. GROUND PER NEC. MOUNT +16" A.F.F. TO CENTER OF OUTLET.
⊕ WP/GFI	WEATHERPROOF 120 VOLT 20 AMP DUPLEX WALL OUTLET. GROUND PER NEC. MOUNT AT +16" ABOVE FINISH GRADE/FLOOR. USE GROUND FAULT INTERRUPTER OUTLET OR BREAKER.
⊕ +44"/GFI	20 AMP DUPLEX 120 VOLT WALL OUTLET WITH WHITE MATCHING COVER PLATE. GROUND PER NEC. MOUNT +44" A.F.F. TO CENTER OF OUTLET. USE GROUND FAULT INTERRUPTER OUTLET OR BREAKER.
⊕	WALL MOUNTED JUNCTION BOX WITH WIRE STUB FOR FUTURE PIGTAIL OR HARDWIRE TO OWNER SUPPLIED EQUIPMENT. COORDINATE WITH OWNER/SUPPLIER FOR EQUIPMENT.
◻	CEILING MOUNTED EXHAUST FAN. 120 VOLT. SWITCH WITH LIGHTS. REFER TO SHEETS M1 AND E1 FOR MORE INFORMATION.
⊕	WALL MOUNTED ELECTRIC METERING SYSTEM DEVICE BY ELECTRIC COMPANY. PROVIDE CONDUIT AND GROUNDING ROD AS REQUIRED. SIZED AND INSTALLED BY ELECTRIC POWER CO.
◻	RECESSED BREAKER PANEL BY "ITT" OR APPROVED EQUAL. PROVIDE SPACES PER OWNER'S REQUIREMENTS, 120/240 VOLT, 1Ø, 3 WIRE, 200A, LOCKABLE CABINET.

LIGHT FIXTURE SCHEDULE			
ITEM	KEY	DESCRIPTION	REMARKS
⊙	'A'	6" RECESSED CAN LIGHT FIXTURE W/ TRIM - TRAVERSE LYTE T24 OR APPROVED EQUAL	
◻	'B'	WALL MOUNTED LIGHT FIXTURE - JOHN TIMBERLAND OUTDOOR LIGHTING: WHATLEY 6-1/4" HIGH BLACK LED OUTDOOR WALL LIGHT OR APPROVED EQUAL.	
◻	'C'	WALL MOUNTED LIGHT FIXTURE - ACCESS OUTDOOR LIGHTING: NAUTICUS 4-1/4" HIGH SHADED BLACK LED OUTDOOR WALL LIGHT OR APPROVED EQUAL.	
◻	'EF'	CEILING MOUNTED RECESSED EXHAUST FAN. SWITCH WITH LIGHTS. 120 VOLT, 1Ø, WITH TERMINATION KIT AND INSECT SCREEN. PROVIDE FLEX DUCTING TO EXTERIOR. BROAN OR APPROVED EQUAL.	
⊕	'F'	ATTIC LIGHT FIXTURE WITH ACRYLIC LENS AND/OR WIRE GUARD PER N.E.C. 120 VOLT, SWITCH IN ATTIC NEXT TO OPENING.	
⊕	'EM'	EMERGENCY LIGHT FIXTURE W/ DUAL LED HEADS & 90 MINUTE BATTERY BACKUP	

RISER DIAGRAM NOTES:

- ALL WIRE SIZES BASED UPON 75' COPPER.
- ALL OUTDOOR EQUIPMENT TO BE NEMA 3R RATED.
- ALL INDOOR EQUIPMENT TO BE NEMA 1 RATED.
- CONTRACTOR TO VERIFY POSITION OF ELECT. PANELS.
- ELECTRICAL SERVICE:
 - COORDINATE ALL SERVICE AND METERING DETAILS, INCLUDING ANY RELOCATION OF TESTING EQUIPMENT WITH POWER CO.
 - PAY ANY POWER CO. FEES CHARGED TO OWNER FOR WORK ASSOCIATED WITH THIS PROJECT. THESE COSTS SHALL BE INCLUDED IN BIDS IF POSSIBLE.
 - FURNISH AND INSTALL MATERIALS FOR A TEMPORARY CONSTRUCTION SERVICE AS REQUIRED.
 - FURNISH AND/OR INSTALL ALL REQUIRED MATERIAL AND LABOR IN COMPLIANCE WITH POWER CO. REQMTS. TO PROVIDE A COMPLETE ELECTRICAL SERVICE AS SHOWN ON DRAWINGS. PRIMARY CONDUITS, SECONDARY CONDUITS, AND CABLES AND GROUNDING SYSTEM.
 - GROUND SERVICE EQUIPMENT TO COLD WATER PIPE AND TO CONCRETE ENCASED ELECTRODE IN ACCORDANCE WITH 2003 NEC 250 AND GROUNDING ELECTRODE DETAIL.

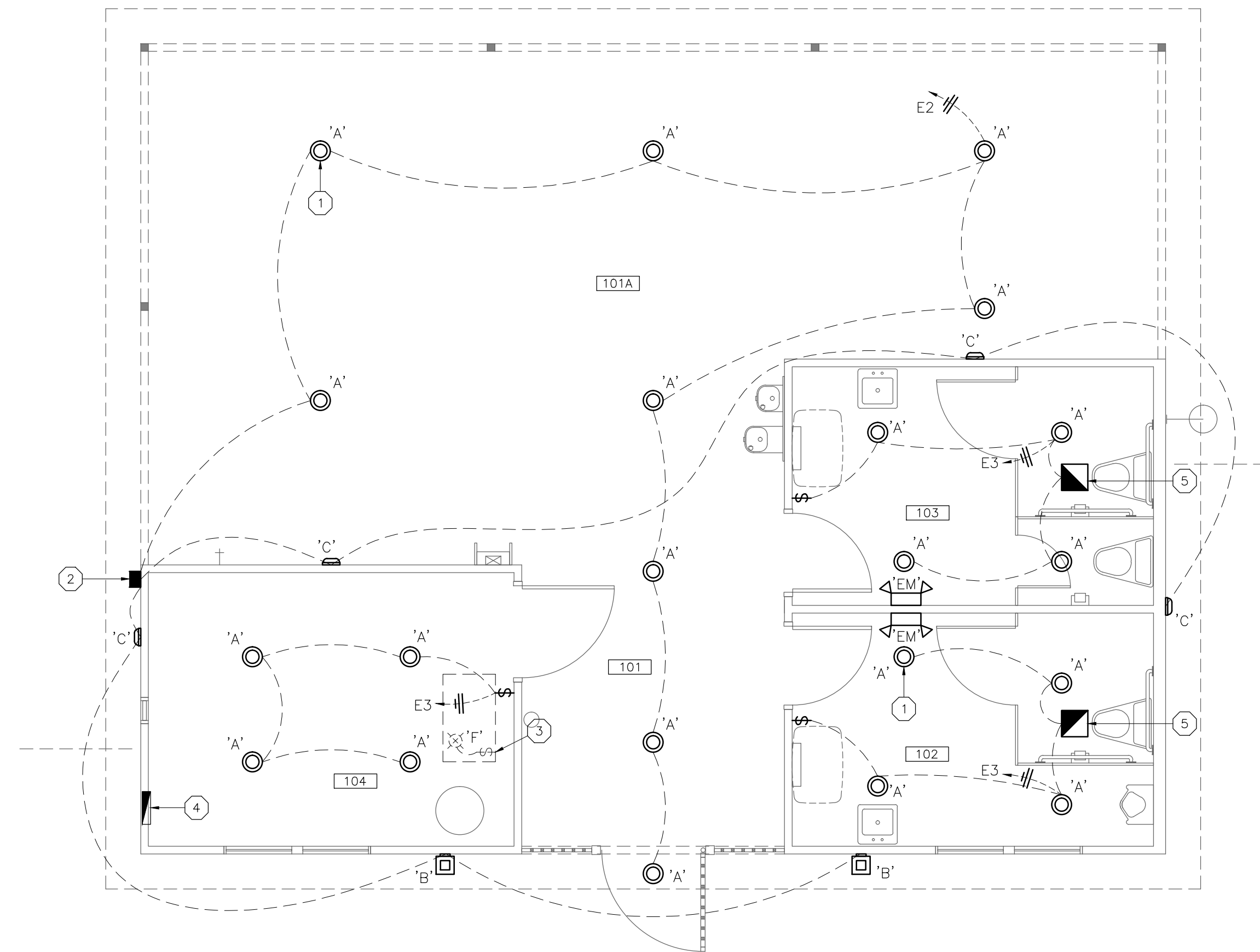
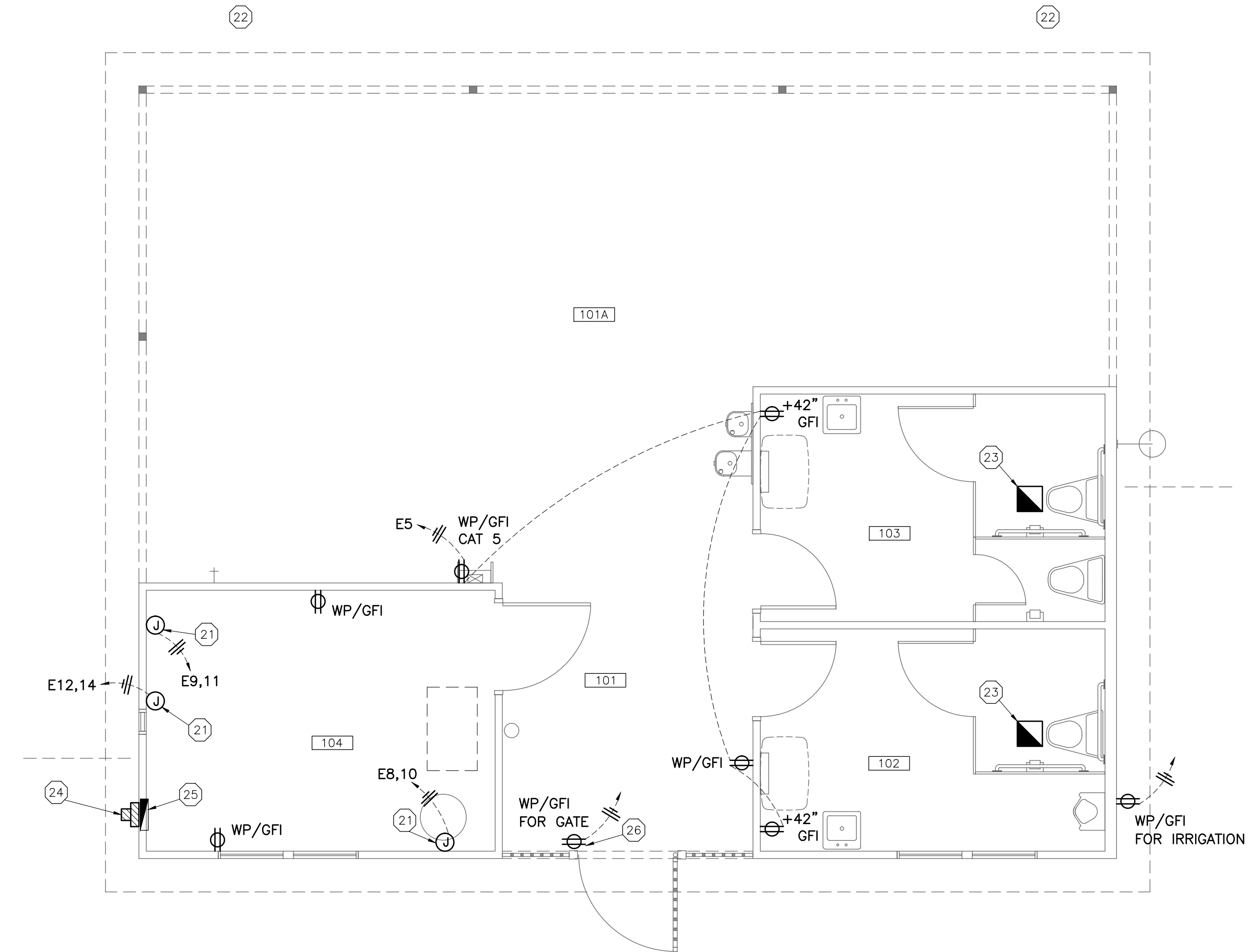


GENERAL NOTES:

- ALL ELECTRICAL WORK AND LIGHTING WORK SHALL COMPLY WITH ALL CURRENT FEDERAL, STATE, AND LOCAL CODES AND ORDINANCES.
- ALL MATERIALS, FIXTURES, AND EQUIPMENT SHALL BE NEW AND IN GOOD WORKING CONDITION.
- ALL ELECTRICAL PERMITTING SHALL BE OBTAINED AND PAID FOR BY THE E.C. PRIOR TO START OF CONSTRUCTION.
- ALL EQUIPMENT AND DEVICES SHALL BE "UL" LISTED AND SHALL BE NEW AND IN GOOD WORKING CONDITION.
- E.C. SHALL LABEL BREAKER PANEL WITH APPROPRIATE CIRCUITS.

KEY NOTES:

- TYPICAL RECESSED LIGHT FIXTURE. SEE SCHEDULE.
- WALL MOUNTED +9"-0" A.F.G. PHOTO CELL AND TIMER LOCATED WHERE INDICATED.
- ATTIC MOUNTED LIGHT AND LIGHT SWITCH MOUNTED TO TRUSS. SEE FIXTURE SCHEDULE.
- LOCATION OF NEW 200 AMP BREAKER PANEL RECESSED IN WALL. SEE SHEET E2.
- TYPICAL RECESSED CEILING EXHAUST FAN, 120 VOLT. SWITCH WITH LIGHTS COORDINATE WITH M.C.
- PROVIDE A NEMA SINGLE DISCONNECT FOR POOL EQUIPMENT. REFER TO EQUIP. MANUFACTURER.
- PROVIDE CONDUIT RUNS TO OUTER EDGE OF POOL DECK FOR (3) OUTLETS. COORDINATE EXACT LOCATIONS & REQUIREMENTS W/ OWNER.
- CEILING MOUNTED EXHAUST FAN - SWITCH WITH LIGHTS. REFER TO LIGHTING PLAN.
- APPROXIMATE LOCATION OF ELECTRIC METER/INCOMING SERVICE LOCATION.
- LOCATION OF NEW ELECTRIC BREAKER PANEL. 120/240v, 1Ø, 3 W., 200A, RECESSED.
- POWER IN CEILING FOR GATE OPERATION. COORDINATE REQUIREMENTS W/ GATE SUPPLIER.



A NEW POOL HOUSE FOR
MCCORD POINTE POOL HOUSE
9880 TRAFFORD COURT MCCORDSVILLE, INDIANA

LENNAR

REGISTERED ARCHITECT
MICHAEL E. BALAY
No. 880149
STATE OF INDIANA
MICHAEL E. BALAY ARCHITECTS, INC.
10000 N. STATE ST. #100
MCCORDSVILLE, IN 46038
Tel: (317) 219-6815
michael@balayarchitects.com

INDIANAPOLIS, INDIANA

PROJECT NO. 2007	CHECKED BY: MEB	DESCRIPTION
DRAWN BY: ID	DATE	STATE SUBMITTAL SET
MARK	DATE	MEB
18/04/2020		

REV DATA

© 2020 BALAY ARCHITECTS, INC.

ELECTRICAL LIGHTING PLAN & ELECTRICAL POWER PLAN

E1

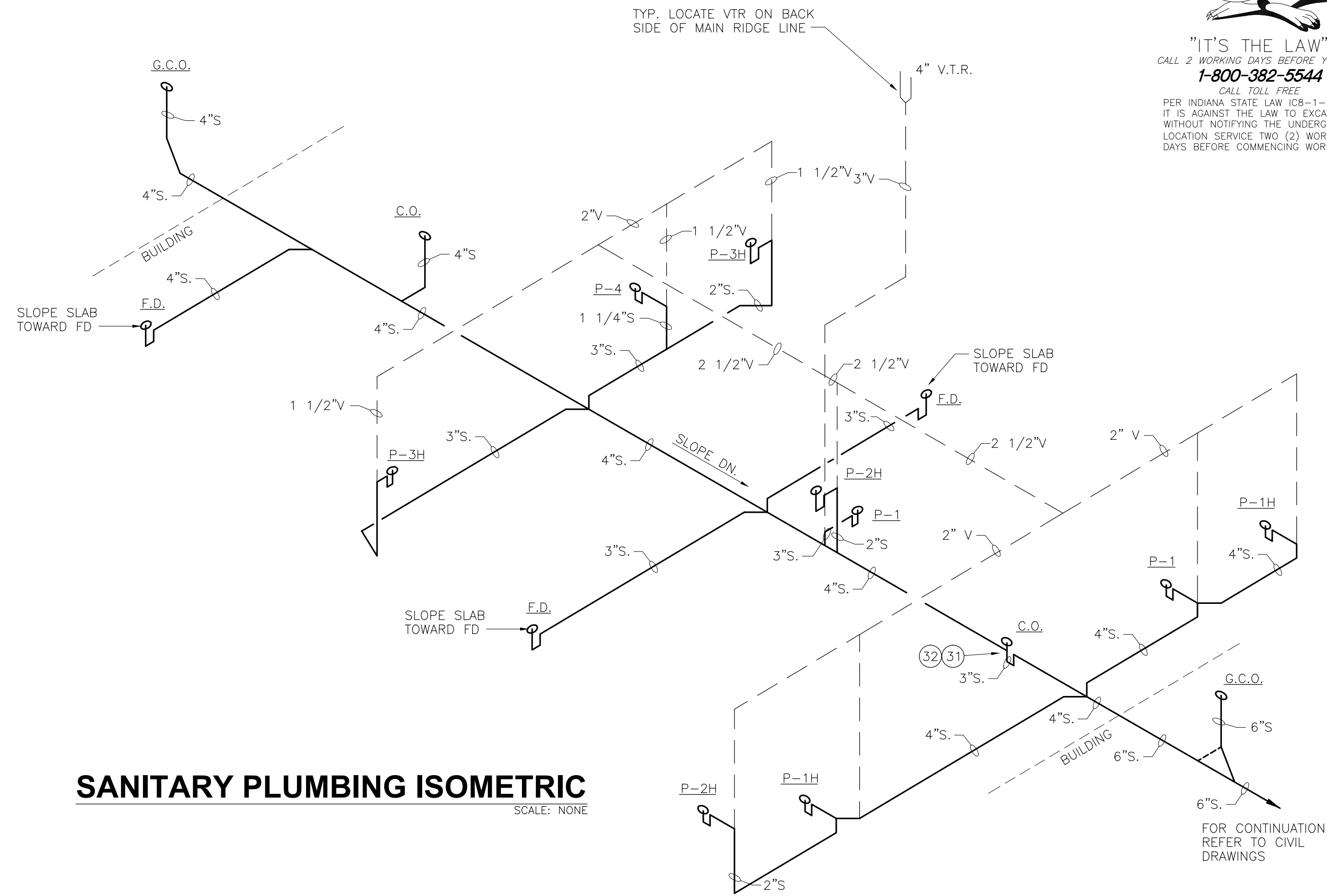
HOLEY MOLEY SAYS

"DIG SAFELY"



"IT'S THE LAW"
CALL 2 WORKING DAYS BEFORE YOU DIG
1-800-382-5544
CALL TOLL FREE

PER INDIANA STATE LAW (CB-1-26), IT IS AGAINST THE LAW TO EXCAVATE WITHOUT NOTIFYING THE UNDERGROUND LOCATION SERVICE TWO (2) WORKING DAYS BEFORE COMMENCING WORK.



SANITARY PLUMBING ISOMETRIC
SCALE: NONE

PLUMBING FIXTURE SCHEDULE						
MARK	DESCRIPTION	HW	CW	WASTE	VENT	REMARKS
P-1	CRANE TANK TYPE WATER CLOSET VITREOUS CHINA, MODEL NO.39354 ECONOMIZER, WITH WHITE SEAT MODEL NO. 95 BY OLSONITE.	--	1/2"	3"	2"	ELONGATED RIM, SIPHON-ASSIST. BLOW-OUT ACTION, AND 1.6G.P.F. DIRECT FED JET.
P-1H	CRANE TANK TYPE WATER CLOSET VITREOUS CHINA, MODEL NO.3938 ECONOMIZER, WITH WHITE SEAT MODEL NO. 95 BY OLSONITE. HANDICAPPED MODEL.	--	1/2"	3"	2"	ELONGATED RIM, SIPHON-ASSIST. BLOW-OUT ACTION, AND 1.6G.P.F. DIRECT FED JET. MOUNT AT ADA HGT. (+17 1/4" AFF)
P-2	CRANE VITREOUS CHINA URINAL, MODEL NO. 7150 EMBASSY (WHITE) WITH SLOAN ROYAL FLUSH VALVE MODEL NO. 186-1	--	3/4"	2"	1 1/2"	LOW-CONSUMPTION (1.0 GPF), SIPHON-JET ACTION, WALL HUNG, INTEGRAL EXTENDED SHIELDS, 16" W., 2" IPS OUTLET, 3/4" TOP SPUD.
P-2H	CRANE VITREOUS CHINA URINAL, MODEL NO. 7150 EMBASSY (WHITE) WITH SLOAN ROYAL FLUSH VALVE MODEL NO. 186-1	--	3/4"	2"	1 1/2"	LOW-CONSUMPTION (1.0 GPF), SIPHON-JET ACTION, WALL HUNG, INTEGRAL EXTENDED SHIELDS, 16" W., 2" IPS OUTLET, MOUNT AT 17" A.F.F. TO RIM MAX., AND 3/4" TOP SPUD.
P-3H	CRANE HANDICAPPED ACCESSIBLE WALL MOUNTED SINK, WHITE, MODEL NO. 1300V YORKSHIRE, WITH AMERICAN STANDARD FAUCET, MODEL NO. 5501.170. MOUNT PER A.D.A.	1/2"	1/2"	2"	1 1/2"	20x18 LAVATORY WITH P-TRAP, POP-UP DRAIN, AND WRIST BLADE FAUCETS PER A.D.A., MOUNT AT +34" A.F.F. AND HANDICAPPED SHIELD AROUND PIPING.
P-4	ELKAY NO LEAD, WALL MOUNT TWO-LEVEL DRINKING FOUNTAIN WITH SOFT SIDES, AND WALL PLATE, BARRIER-FREE ACCESS MODEL NO. EDFP217C. TOP OF BOWL +39 1/2" AND +33 1/2" A.F.F. PER A.D.A.	--	3/8" EACH	1 1/4"	1 1/4"	INCLUDE MP20 SURFACE MOUNT. PLATE. 120 VOLT (GFI OUTLET) NON-METALIC SUPPLY/VALVING. AND WALL REINFORCING FOR MOUNTING.
P-5	WALL MNTD. OUTDOOR SHOWER W/PULL CHAIN OUTDOOR SHOWER CO. MODEL WMP-150-12 SELECTED BY OWNER/CONTRACTOR.	--	1/2"	--	--	STAINLESS STEEL "RAINCAN" SHOWER HEAD GL-150-6 W/ STAINLESS STEEL SUPPORT ARM, FLANGE, WALL BRACKET, PULL CHAIN & HANDLE, INSTALLED PER MANUFACTURER'S RECOMMENDATIONS.
P-6	WADE HOSE BIBB MODEL NO. 8600.175 WITH VACUUM BREAKER	--	3/4"	--	--	WALL HYDRANT WITH STRAIGHT INLET CONNECTION, ANTI-SIPHON, BRONZE CASING AND NICKEL, KEYED STYLE.
P-7	30 GALLON ELECTRIC WATER HEATER MODEL SELECTED BY OWNER/CONTRACTOR	--	--	--	--	30 GALLON CAPACITY ELECTRIC WATER HEATER, TEMPERATURE LIMIT CONTROL, COORD. ALL REQUIREMENTS W/ OWNER/CONTRACTOR
C.O.	ZURN CLEAN OUT - MODEL NO. CO-2401PVC	--	--	3"	--	5" DIA. NICKEL/BRONZE. COVER WITH SECURING SCREW.
G.C.O.	P.V.C. CLEAN OUT (GRADE)	--	--	6"	--	PROVIDE LOCKABEL/SEALDOWN CAP 6" A.F.G. OR PER LOCAL CODE.
F.D.	ZURN FLOOR DRAIN MODEL NO. Z-4158	--	--	3"	--	DURA-COATED. TO BE INSTALLED BY PLUMBING CONTRACTOR. PROVIDE TRAP PRIMERS TO ALL F.D.'S, RECEIVING INFREQUENT USAGE AS PER CODE.
B.F.P.	BACK FLOW PREVENTER	--	1 1/2"	--	--	TO BE VERIFIED BY P.C.

NOTES: 1. PLUMBING FIXTURES, ACCESSORIES AND INSTALLATION SHALL MEET WITH ALL FEDERAL, STATE, AND LOCAL CODES AND ORDINANCES.
2. PLUMBING FIXTURE SUBSTITUTIONS BY P.C. WILL BE SUBJECT TO THE APPROVAL OF THE ARCHITECT. ALL CHANGES MUST BE APPROVED BY THE ARCHITECT.
3. P.C. SHALL VERIFY THAT ALL FAUCETS, FITTINGS, AND INSTALLATIONS ARE COMPLIANT WITH A.D.A. REQUIREMENTS AS INDICATED ON PLANS.

GENERAL NOTES:

1. ALL PLUMBING WORK SHALL CONFORM TO ALL CURRENT FEDERAL, STATE, AND LOCAL CODES, AND ORDINANCES.
2. ALL PLUMBING FIXTURES AND DEVICES SHALL BE NEW AND IN GOOD WORKING CONDITION.
3. ALL FIXTURES SHALL MEET A.D.A. REQUIREMENTS FOR USE.
4. A.D.A. APPROVED FIXTURES SHALL BE INSTALLED PER REQUIREMENTS.
5. ALL COLD AND HOT WATER LINES TO BE RUN UNDER SLAB.
6. ALL MECHANICAL WORK SHALL COMPLY WITH ALL CURRENT FEDERAL, STATE, AND LOCAL CODES AND ORDINANCES.
7. ALL MATERIALS SHALL BE NEW AND IN GOOD OPERATING CONDITION.
8. M.C. SHALL OBTAIN AND PAY FOR ALL RELATED PERMITS REGARDING THIS PROJECT.
9. PLUMBING CONTRACTOR (P.C.) SHALL COMPLY WITH ALL FEDERAL, STATE, AND LOCAL CODES AND AUTHORITIES HAVING JURISDICTION, AND HAVE FINAL CONNECTIONS TO FIXTURES AND EQUIPMENT.

KEY NOTES:

1. NA
2. EXTERIOR FLOOR DRAIN, SLOPE FLOOR TOWARD DRAIN. PROVIDE TRAP AND COVER GRATE. BY ZURN OR APPROVED EQUAL. TIE INTO STORM DRAINAGE SYSTEM
3. APPROXIMATE LOCATION OF INCOMING WATER SUPPLY LINE. FIELD VERIFY AND COORDINATE WITH CIVIL DRAWINGS. 1 1/2" CW LINE
4. P.C. SIZED AND INSTALLED BACKFLOW PREVENTER
5. COLD WEATHER DRAIN VALVE FOR SUPPLY SYSTEM. P.C. SHALL PROVIDE COMPRESSED AIR BLOWOUT VALVE TO REMOVE ALL WATER IN SYSTEM
6. P.C. SHALL PROVIDE/INSTALL DOMESTIC WATER MANIFOLD SYSTEM ON WALL. CONNECT PEX PIPING TO EACH FIXTURE REQUIRING H.& CW.
7. ELECTRIC WATER HEATER - REFER TO SCHEDULE FOR MORE DETAILS
8. 2" WASTE LINE AND 1 1/2" VENT LINE WITH C.W. SUPPLY TO URINAL FLUSH VALVE. SIZED/INSTALLED BY P.C.
9. 3" WASTE LINE TO W.C. AND COLD WATER SUPPLY LINE WITH SHUT-OFF VALVE
10. 2" WASTE AND 1 1/2" VENT LINE WITH 1/2" H.& CW LINE TO SINK
11. 2" WASTE AND 1 1/2" VENT WITH CW SUPPLY PER SPECS
12. FLOOR CLEAN OUT (C.O.) WITH COVER PLATE AND TRAP
13. GRADE CLEAN OUT (G.C.O.) WITH TIGHTENING CAP 6" A.F.G.
14. REFER TO CIVIL DRAWINGS FOR CONTINUATION OF 6" SANITARY SEWER LINE
15. 3/4" KEYED WALL MOUNTED HOSE BIBB +18" A.F.G. PROVIDE VACUUM BREAKER BENEATH
16. SANITARY SEWER LINE BELOW SLAB
17. 3" VENT LINE UP TO 4" V.T.R. - LOCATE V.T.R. ON BACK SIDE OF MAIN RIDGE LINE
18. TYPICAL 2" WASTE FOR FLOOR MOUNTED FLOOR DRAIN WITH TRAP. SLOPE FLOOR TO DRAIN
19. 3/4" CW SUPPLY TO HOSE BIBB WITH VACUUM BREAKER.
20. NA
21. NA
22. NA
23. 2" WASTE AND 1 1/2" VENT LINE WITH 1/2" H.& CW LINE TO SINK. 2" VENT LINE UP TO 4" V.T.R. - LOCATE V.T.R. ON BACK SIDE OF MAIN RIDGE LINE
31. P.C. SHALL PROVIDE AND INSTALL A BLOW-OUT VALVE WITHIN SANITARY SYSTEM FOR WINTERIZATION. PROVIDE A SEALABLE VENT ON MAINS THRU ROOF AS REQUIRED.
32. P.C. SHALL ALSO PROVIDE A BLOW-OUT VALVE SYSTEM FOR THE SUPPLY LINES. LOCATE ON LOWEST POINT OF SYSTEM.
51. 12" x 12" WALL LOUVER. INSTALL (1) 12" ABOVE F.F. LINE AND (1) 12" BELOW CEILING LINE IN EXTERIOR WALL. PROVIDE/INSTALL SEALANT AROUND PERIMETER WITH INSECT SCREEN.
52. PROVIDE/INSTALL 6" DUCT UP TO ROOF CAP. FLASH AND SEAL AROUND PENETRATION.
53. FLEX DUCT TO VERTICAL DUCT PIPE THRU ROOF FOR EXHAUST FAN.
54. 150 CFM EXHAUST FAN, 120V, SWITCHED WITH LIGHTS

A NEW POOL HOUSE FOR
MCCORD POINTE POOL HOUSE
McCordsville, Indiana
9880 TRAFFORD COURT

LENNAR

Michael E. Balay
Architect
No. 880149
Professional Engineer
State of Indiana
Michael E. Balay
Architects
m.e.balay@architects.com

INDIANAPOLIS, INDIANA

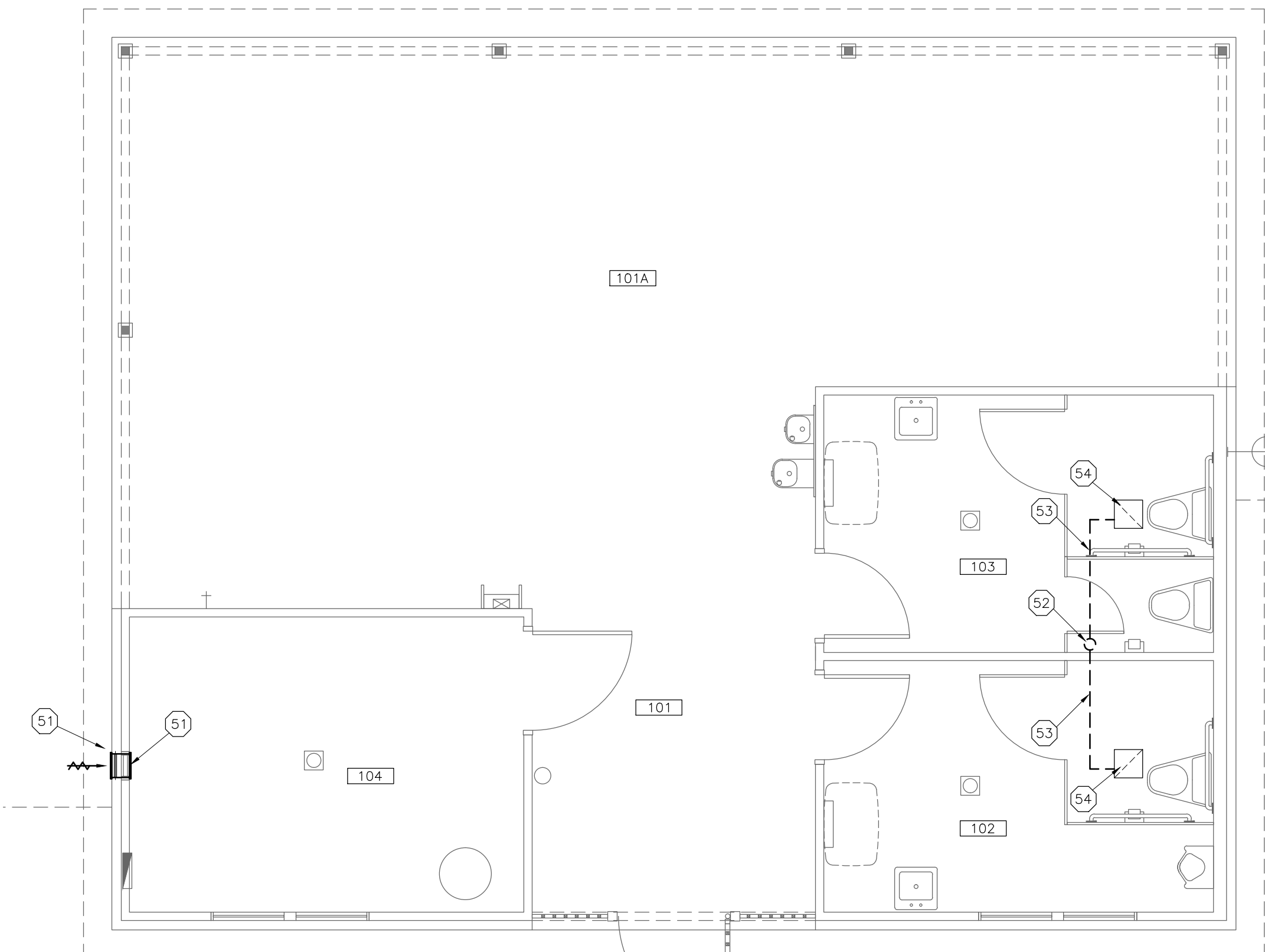
PROJECT NO.:	2007
DRAWN BY:	MEB
CHECKED BY:	MEB
DATE:	08/04/2020
STATE:	INDIANA
DESCRIPTION:	STATE SUBMITTAL SET

REV DATA

© 2020 BALAY ARCHITECTS, INC.

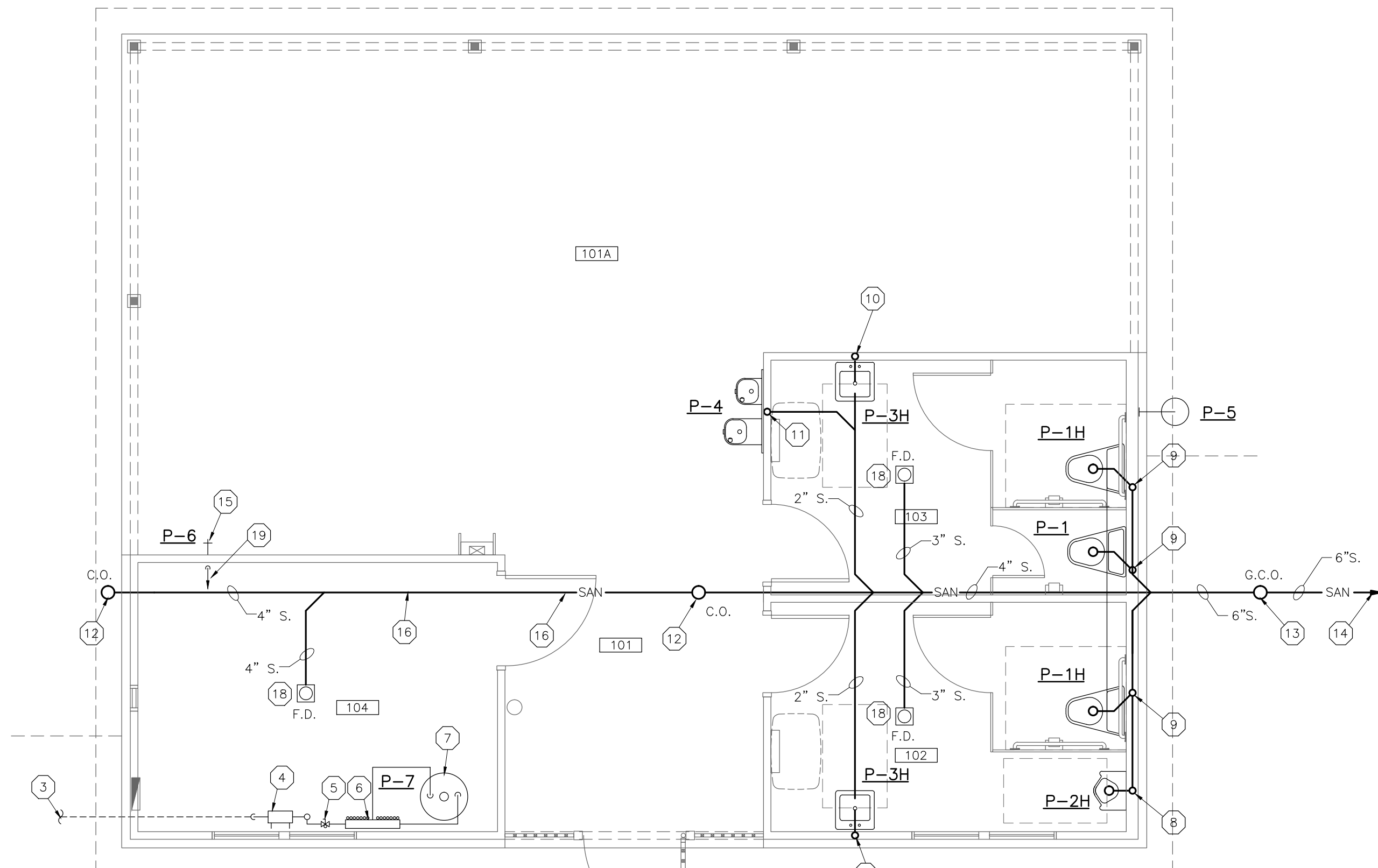
MECHANICAL & PLUMBING PLANS, RISER DIAG. & SCHED.

MP1



MECHANICAL PLAN
SCALE: 1/4"=1'-0"

PLAN NORTH
(SEE SITE PLAN)



PLUMBING PLAN
SCALE: 1/4"=1'-0"

PLAN NORTH
(SEE SITE PLAN)