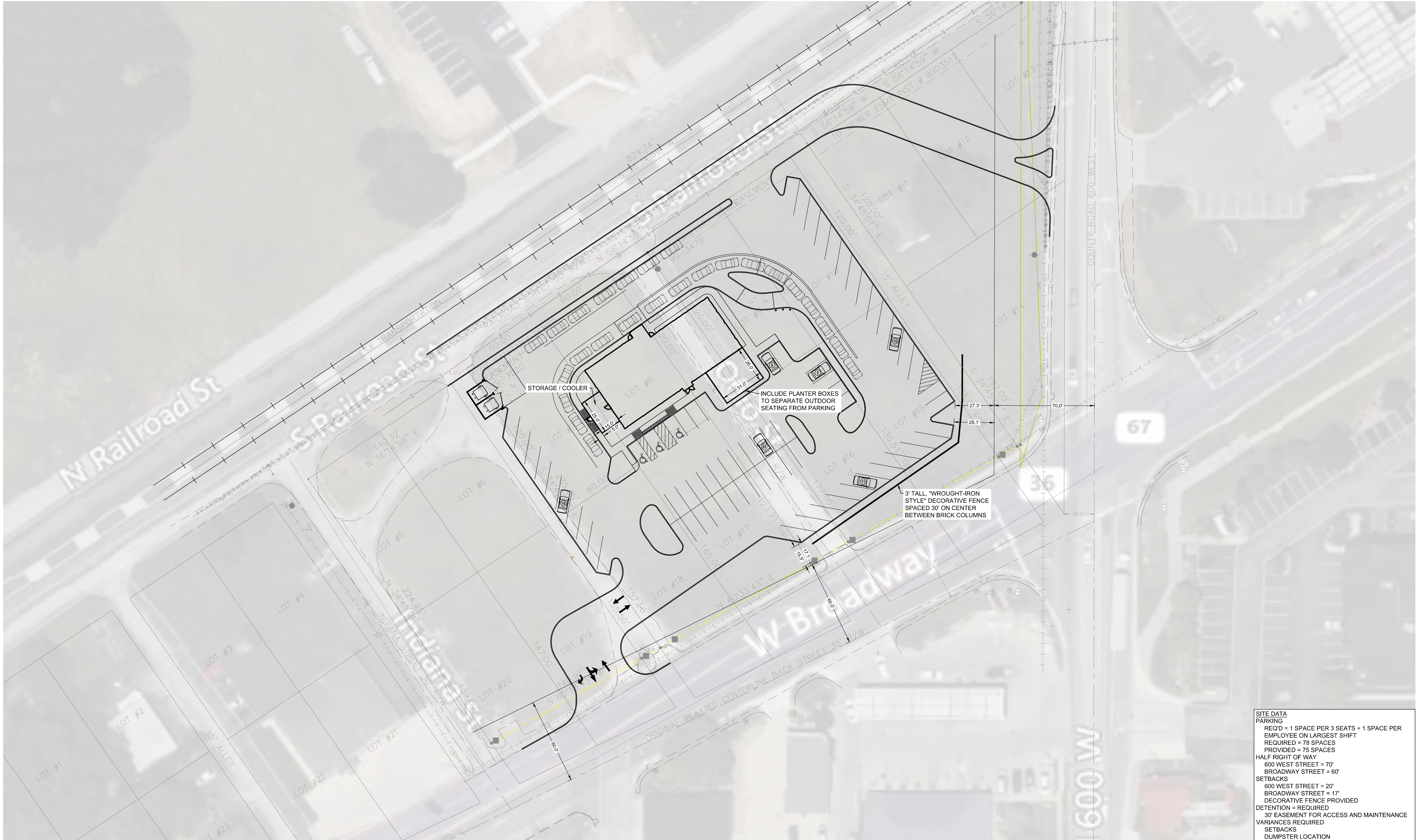


### **Statement of Intent**

Applicant seeks a Special Exception for a drive-thru business and variances of certain development standards, including:

1. Dumpster located in front yard of Railroad Street frontage;
2. 73 parking spaces provided, 78 parking spaces required;
3. Width of main entrance from Broadway is 45 feet, 42 feet maximum permitted at the right of way line





SITE DATA	
PARKING	
REQ'D = 1 SPACE PER 3 SEATS + 1 SPACE PER	
EMPLOYEE ON LARGEST SHIFT	
REQUIRED = 78 SPACES	
PROVIDED = 75 SPACES	
HALF RIGHT OF WAY	
600 WEST STREET = 70'	
BROADWAY STREET = 60'	
SETBACKS	
600 WEST STREET = 20'	
BROADWAY STREET = 17'	
DECORATIVE FENCE PROVIDED	
DETENTION = REQUIRED	
30' EASEMENT FOR ACCESS AND MAINTENANCE	
VARIANCES REQUIRED	
SETBACKS	
DUMPSTER LOCATION	



# BB-3 BUTTERBURGER PANEL

MCCORDSVILLE, IN

## ButterBurger Outdoor Panel Wall Sign

### BB-3

All aluminum 0.080" thick panel -  
backside is blank (white)

Baked on aluminum white enamel  
finish

Digital print overlay with  
overlamine

Rounded corners are to be 1.25"  
radius

Sign is to be mounted flush to wall

**Culver's**



NOT FOR  
PRELIMINARY  
CONSTRUCTION

#### TYPICAL INSTALLATION - TOP VIEW

WALL

SIGN FACE  
FLUSH MOUNTS TO WALL

SCALE: N.T.S

#### INSTALL NOTES

TYPICALLY USED FOR MIRRORED METRO L LAYOUTS

#### NOTES

SALES PERSON:

MARK WESSELL

DESIGNED BY:

J KROEGER

AO:

43983

#### DATE CREATED / REVISION HISTORY

04/06/23 - NEW

5/3/23 - Change to BB-3

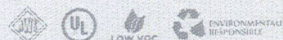
SCALE: 1-1/2" = 1'

\*SCALE AND COLORS NOT REPRESENTATIVE FROM EMAIL ATTACHMENTS  
\*ALL MEASUREMENTS ARE APPROXIMATE

© 2020 Springfield Sign & Graphics Inc., Springfield Sign

This drawing is Copyrighted material. It remains the property of Springfield Sign unless otherwise agreed upon in writing. It is unlawful to use this drawing for bidding purposes, nor can it be reproduced, copied or used in the production of a sign without written permission from Springfield Sign & Graphics.

This is an artistic rendition and final colors / sizes may vary from that depicted herein.



**SPRINGFIELD SIGN**  
www.springfieldsign.com



# ELEVATION WALL SIGNS

MCCORDSVILLE, IN

SL-45 & SL-30 Illuminated White Script Channel Letters

## SL-SERIES

Channel letter construction

One piece (saddle capped sections)

LED internal illumination

Typical application for new construction

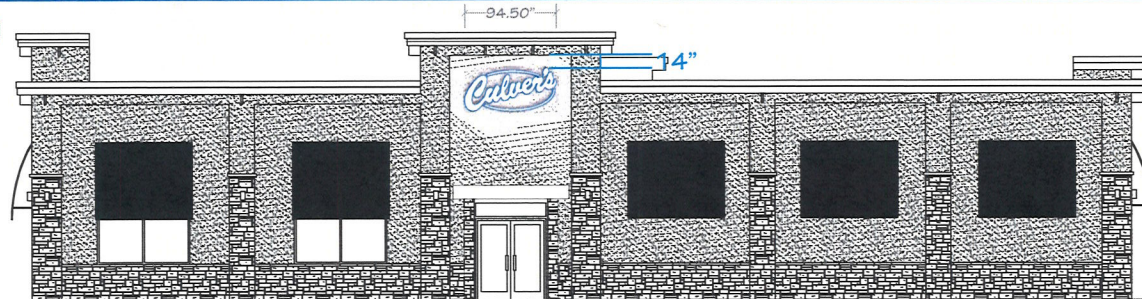
Embedded power supplies

UL marked product

No install pattern needed, level line scribed in back of sign

*Culver's*

MAIN ELEVATION  
SL-30

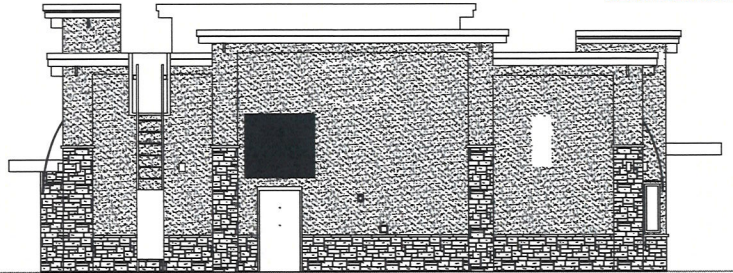


NOT FOR  
PRELIMINARY  
CONSTRUCTION

FRONT ELEVATION  
SL-45, BB-3



REAR ELEVATION



DRIVE THRU ELEVATION  
SL-30



SCALE: 1/16" = 1'

\*SCALE AND COLORS NOT REPRESENTATIVE FROM EMAIL ATTACHMENTS  
\*ALL MEASUREMENTS ARE APPROXIMATE

### SIGN SQUARE FOOTAGE

MAIN ELEVATION: QTY-1 SL-30 (44.37' X 94.50') = 29.12 SF  
FRONT ELEVATION: QTY-1 SL-45 (56.00' X 120.00') = 46.67 SF  
QTY-1 BB-3 (17.67' X 27.88') = 3.42 SF

REAR ELEVATION: QTY-1 SL-30 (44.37' X 94.50') = 29.12 SF  
DRIVE THRU ELEVATION: QTY-1 SL-30 (44.37' X 94.50') = 29.12 SF

PLAN METRO L-2020 PROTOTYPE DRAWINGS SHOWN  
ACTUAL ARCHITECTURAL DRAWINGS PENDING

### NOTES

BB-3 typical front placement: Front



MFG: T.B.D.  
STYLE: T.B.D.  
COLOR: T.B.D.



MFG: T.B.D.  
STYLE: T.B.D.  
COLOR: T.B.D.

### DATE CREATED / REVISION HISTORY

04/06/23 - NEW

5/3/23 - Remove LED & Rear sign

SALES PERSON:  
MARK WESSELL

DESIGNED BY:  
J KROEGER

A0:  
43983

© 2020 Springfield Sign & Graphics Inc., Springfield Sign

This drawing is Copyrighted material, it remains the property of Springfield Sign unless otherwise agreed upon in writing. It is unlawful to use this drawing for bidding purposes, nor can it be reproduced, copied or used in the production of a sign without written permission from Springfield Sign & Graphics.

This is an artistic rendition and final colors / sizes may vary from that depicted herein.



SPRINGFIELD SIGN

www.springfieldsign.com



# TENANT PANEL

MCCORDSVILLE, IN

## Monument - Tenant Panel Reface

S/F LED internally illuminated  
tenant panel reface.

White acrylic face with Culver's  
blue vinyl reverse cut, 1st surface  
applied

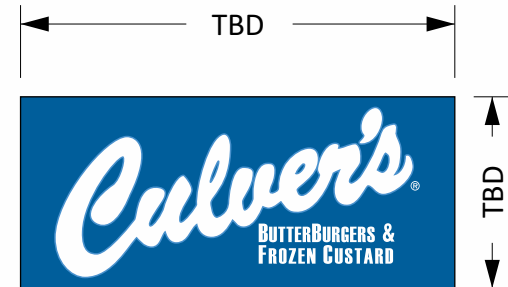
**SURVEY NEEDED  
FOR POSITION AND  
DIMENSIONS**



SCALE: NT\$

\*SCALE AND COLORS NOT REPRESENTATIVE FROM EMAIL ATTACHMENTS  
\*ALL MEASUREMENTS ARE APPROXIMATE

NOT FOR  
PRELIMINARY  
CONSTRUCTION



### NOTES

Survey needed for dimensions and straight on photos for depiction

SALES PERSON:  
MARK WESSELL

DESIGNED BY:  
J KROEGER

A0:  
43983

### DATE CREATED / REVISION HISTORY

04/06/23 - NEW

© 2020 Springfield Sign & Graphics Inc., Springfield Sign

This drawing is Copyrighted material, it remains the property of Springfield Sign unless otherwise agreed upon in writing. It is unlawful to use this drawing for bidding purposes, nor can it be reproduced, copied or used in the production of a sign without written permission from Springfield Sign & Graphics.

This is an artistic rendition and final colors / sizes may vary from that depicted herein.



ENVIRONMENTALLY  
RESPONSIBLE

 **SPRINGFIELD SIGN**  
www.springfieldsign.com



# AD-1 ADDRESS NUMBERS

MCCORDSVILLE, IN

## Routed Address Numbers

### AD-1

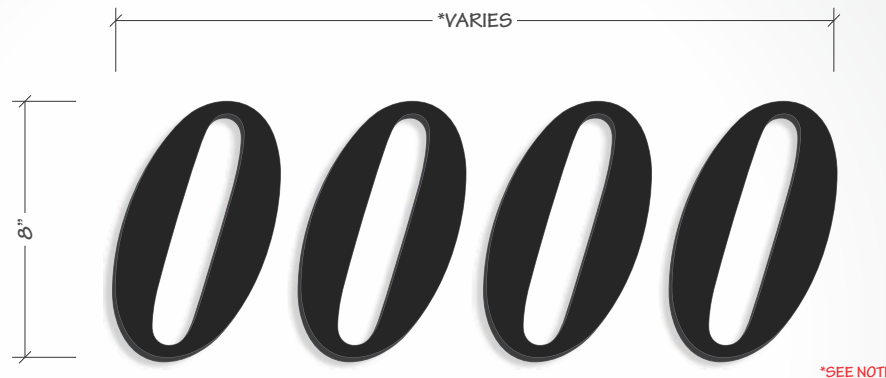
Address letters as required for building occupancy

Size & quantity may vary

Stud/adhesive mounting

1/2" thick, black XPVC

**NOTE:** Address to be verified with G.C. prior to mfg.



\*SEE NOTE

SCALE: 1" = 6'

\*SCALE AND COLORS NOT REPRESENTATIVE FROM EMAIL ATTACHMENTS  
\*ALL MEASUREMENTS ARE APPROXIMATE

### TYPICAL INSTALLATION

\*SEE NOTE



SCALE: 1/8" = 1'

### NOTES

SALES PERSON:  
MARK WESSELL

DESIGNED BY:  
J KROEGER

A0:  
43983

### DATE CREATED / REVISION HISTORY

04/06/23 - NEW

*Culver's*

© 2020 Springfield Sign & Graphics Inc., Springfield Sign

This drawing is Copyrighted material, it remains the property of Springfield Sign unless otherwise agreed upon in writing. It is unlawful to use this drawing for bidding purposes, nor can it be reproduced, copied or used in the production of a sign without written permission from Springfield Sign & Graphics.

This is an artistic rendition and final colors / sizes may vary from that depicted herein.



ENVIRONMENTALLY  
RESPONSIBLE



SPRINGFIELD SIGN

www.springfieldsign.com



# ME-SL-45 CUSTOM MONUMENT WITH EMC

MCCORDSVILLE, IN

ME-45-L-60X120-10-RGB

## ME-SL-C

Culver's sign cabinet of aluminum construction and internally illuminated with LED's

Pole skirt enclosure provides cradle rest for iconic Culver's logo - All aluminum construction

White face Push-Thru-Script Letter

Watchfire 60X120 RGB full color Electronic Message Center (EMC) with RF wireless communication

Broadband communication option available

UL marked product

1- 3M is a registered trademark of Minnesota Mining & Manufacturing  
1 - Watchfire signs by Time-G-Matic Inc.

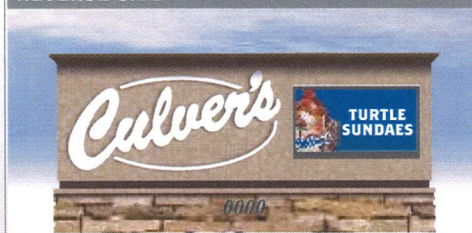
CUSTOM

NOT FOR  
PRELIMINARY  
CONSTRUCTION



REVERSE SIDE

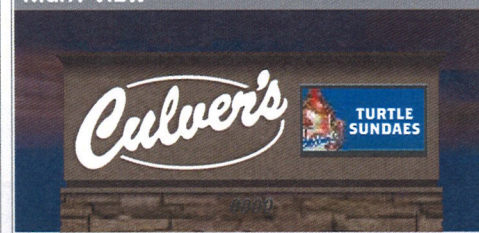
SCALE: NTS



SCALE: 1/4" = 1'

NIGHT VIEW

SCALE: NTS



\*SCALE AND COLORS NOT REPRESENTATIVE FROM EMAIL ATTACHMENTS

1 - Chemetal is a subsidiary of The October Company, Inc. \*ALL MEASUREMENTS ARE APPROXIMATE

### EMC CHART - KNOWN RESTRICTIONS

COLOR: Y ☐ N ☐ STATIC: Y ☒ N ☐ VIDEO: Y ☐ N ☐  
ANIMATION: Y ☐ N ☐ MOVEMENT: Y ☐ N ☐

HOLD TIME (IF STATIC): \_\_\_\_\_

TRANSITION TYPE: \_\_\_\_\_

DAYTIME BRIGHTNESS: \_\_\_\_\_

NIGHTTIME BRIGHTNESS: \_\_\_\_\_

ADDITIONAL RESTRICTIONS:

### SIGN CODES

Height Max: 6'  
SF Max: 36 SF

### NOTES

SQUARE FOOTAGE CALCULATIONS:  
ACRYLIC PUSH THRU: 3'-4" x 7'-1.2" = 23.6 SF  
EMC: 2'-0" x 4'-0" = 8 SF  
TOTAL: 31.6

SALES PERSON:

MARK WESSLE

DESIGNED BY:

J KROEGER

AO:

43983

### DATE CREATED / REVISION HISTORY

04/06/23 - NEW

5/3/23 - Custom monument

© 2019 Springfield Sign & Graphics Inc., Springfield Sign

This drawing is Copyrighted material. It remains the property of Springfield Sign unless otherwise agreed upon in writing. It is unlawful to use this drawing for bidding purposes, nor can it be reproduced, copied or used in the production of a sign without written permission from Springfield Sign & Graphics.

This is an artistic rendition and final colors / sizes may vary from that depicted herein.



SPRINGFIELD SIGN

www.springfieldsign.com



# DIR DIRECTIONAL SIGNS

MCCORDSVILLE, IN

## Illuminated Directional Signs

### DIR

All aluminum construction

LED internal illumination

Totally self contained lighting

Polycarbonate thermoformed faces

Face removal for service

Site plans show placement & field orientation

UL marked product



**DIRECTIONAL SIGN 1**  
DIR-D10-D12



SIDE: A



SIDE: B

NOT FOR  
PRELIMINARY  
CONSTRUCTION

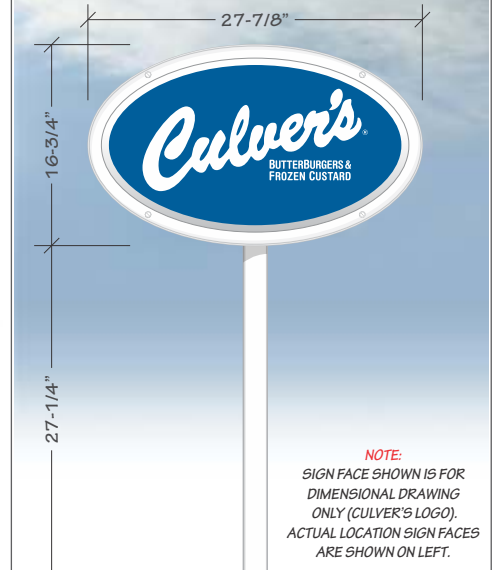
**DIRECTIONAL SIGN 2**  
DIR-#-#

**DIRECTIONAL SIGN 3**  
DIR-#-#

SCALE: 3/4" = 1'

\*SCALE AND COLORS NOT REPRESENTATIVE FROM EMAIL ATTACHMENTS  
\*ALL MEASUREMENTS ARE APPROXIMATE

### SIGN CONCEPTUAL



### NOTES

SQUARE FOOTAGE CALCULATIONS:  
MATHEMATICAL: 2.55 SF  
RECTANGULAR: 3.24 SF

**SALES PERSON:**  
MARK WESSELL

**DESIGNED BY:**  
J KROEGER

**A0:**  
43983

### DATE CREATED / REVISION HISTORY

04/06/23 - NEW

© 2020 Springfield Sign & Graphics Inc., Springfield Sign

This drawing is Copyrighted material, it remains the property of Springfield Sign unless otherwise agreed upon in writing. It is unlawful to use this drawing for bidding purposes, nor can it be reproduced, copied or used in the production of a sign without written permission from Springfield Sign & Graphics.

This is an artistic rendition and final colors / sizes may vary from that depicted herein.



**SPRINGFIELD SIGN**

www.springfieldsign.com



# DTC-2 DRIVE-THRU CANOPY

MCCORDSVILLE, IN

## Drive-Thru Canopy For Order Confirmation System (OCS)

### DTC-2

All aluminum construction

Rated for 160 mph winds (3 second burst) & heavy northern states snow loads

Order Confirmation System (OCS) by others

Rear panel (door) access - lockable

Provides protection from rain for DT customer

Houses OCS, speaker &

**QTY: 2**

*Culver's*



SCALE: 3/8" = 1'



\*SCALE AND COLORS NOT REPRESENTATIVE FROM EMAIL ATTACHMENTS  
\*ALL MEASUREMENTS ARE APPROXIMATE

#### NOTES

#### DATE CREATED / REVISION HISTORY

04/06/23 - NEW

SALES PERSON:  
MARK WESSELL

DESIGNED BY:  
J KROEGER

AO:  
43983

© 2020 Springfield Sign & Graphics Inc., Springfield Sign

This drawing is Copyrighted material, it remains the property of Springfield Sign unless otherwise agreed upon in writing. It is unlawful to use this drawing for bidding purposes, nor can it be reproduced, copied or used in the production of a sign without written permission from Springfield Sign & Graphics.

This is an artistic rendition and final colors / sizes may vary from that depicted herein.



ENVIRONMENTALLY RESPONSIBLE



SPRINGFIELD SIGN

www.springfieldsign.com



# FCO-3 INTERIOR SIGN

MCCORDSVILLE, IN

## FCO Interior Sign with City & State

### FCO-3

0.25" painted aluminum plate

Routed to shape

Pin mounted for rough surface application

VHB tape for smooth wall application

Mounting pattern with fastener instructions



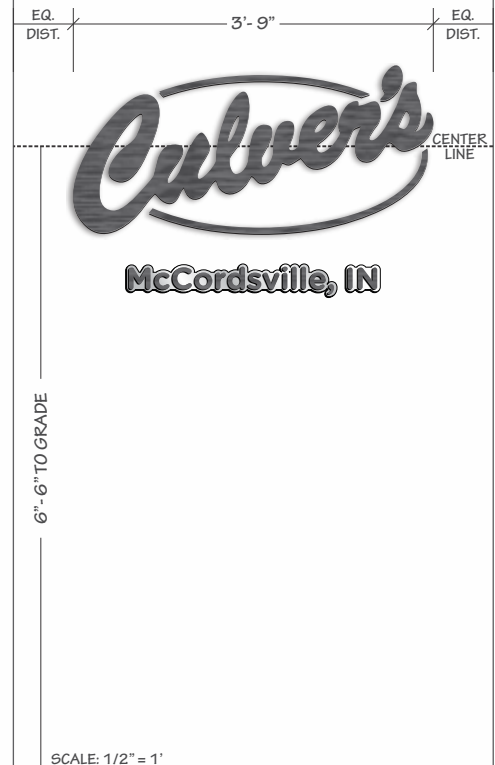
NOT FOR  
PRELIMINARY  
CONSTRUCTION



SCALE: 1" = 1'



### SIGN PLACEMENT



SCALE: 1/2" = 1'

SALES PERSON: MARK WESSELL	DESIGNED BY: J KROEGER	A0: 43983
-------------------------------	---------------------------	--------------

DATE CREATED / REVISION HISTORY	
04/06/23 - NEW	

© 2021 Springfield Sign & Graphics Inc., Springfield Sign

This drawing is Copyrighted material, it remains the property of Springfield Sign unless otherwise agreed upon in writing. It is unlawful to use this drawing for bidding purposes, nor can it be reproduced, copied or used in the production of a sign without written permission from Springfield Sign & Graphics.

This is an artistic rendition and final colors / sizes may vary from that depicted herein.



 **SPRINGFIELD SIGN**  
www.springfieldsign.com

\*SCALE AND COLORS NOT REPRESENTATIVE FROM EMAIL ATTACHMENTS  
\*ALL MEASUREMENTS ARE APPROXIMATE



# MAX-1 MAXIMUM OCCUPANCY SIGN

MCCORDSVILLE, IN

## Interior Maximum Occupancy Sign

### MAX-1

3/16" White acrylic substrate

Direct to surface printing

3M<sup>1</sup> VHB peel & stick adhesive on back

"MAXIMUM OCCUPANCY" must be verified prior to manufacturing

1 - 3M is a registered trademark of Minnesota Mining & Manufacturing



NOT FOR  
PRELIMINARY  
CONSTRUCTION

SCALE: 3" = 1'

\*SCALE AND COLORS NOT REPRESENTATIVE FROM EMAIL ATTACHMENTS  
\*ALL MEASUREMENTS ARE APPROXIMATE

#### NOTES

#### REVISION HISTORY

04/06/23 - NEW

SALES PERSON:  
MARK WESSELL

DESIGNED BY:  
J KROEGER

AO:  
43983

© 2020 Springfield Sign & Graphics Inc., Springfield Sign

This drawing is Copyrighted material, it remains the property of Springfield Sign unless otherwise agreed upon in writing. It is unlawful to use this drawing for bidding purposes, nor can it be reproduced, copied or used in the production of a sign without written permission from Springfield Sign & Graphics.

This is an artistic rendition and final colors / sizes may vary from that depicted herein.



ENVIRONMENTALLY  
RESPONSIBLE

 **SPRINGFIELD SIGN**  
www.springfieldsign.com



# MB-DT-46 EXTERIOR MENU BOARD

MCCORDSVILLE, IN

## Blue Outdoor Drive-Thru Menu Board

### MB-DT-46

Standard Menu Board for Drive-Thru Lane

LED Internal Illumination

POP Graphic panels must be purchased separately

POPP-Out magnet access panels included for easy in & out of POP panels

"-CS" option for 160mph coastal wind standards available

Locking rear access doors (4)

**QTY: 2**

**Culver's**

FRONT



REAR

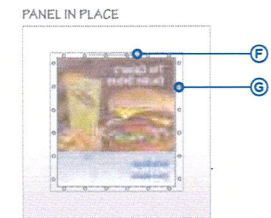
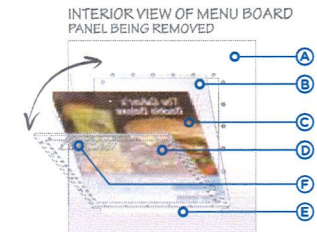


SCALE: 3/8" = 1'

84"

\*SCALE AND COLORS NOT REPRESENTATIVE FROM EMAIL ATTACHMENTS  
\*ALL MEASUREMENTS ARE APPROXIMATE

### POPP-Out Point Of Purchase Panel System



- A - INSIDE BACK OF MENU BOARD FACE (ONLY ONE PANEL SHOWN FOR CLARITY)
- B - FRONT PANEL IS ANTI-GLARE (CLEAR) FOR INCREASED VISIBILITY
- C - POP PANEL - PRODUCT GRAPHIC
- D - REAR PANEL FITTED WITH POPP-Out PANEL
- E - SUPPORTING "TIP TRAY" FOR PANELS (SELF ALIGNING)
- F - POPP-Out TAB HANDLE
- G - PAIRED MAGNETIC "LATCH" (MAGNETS EMBEDDED IN POP-Out PANEL & BACK OF MENU BOARD)

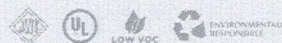
SALES PERSON:	DESIGNED BY:	A0:
MARK WESSELL	J KROEGER	43983

DATE CREATED / REVISION HISTORY	
04/06/23 - NEW	
5/3/23 - Add stone base	

© 2020 Springfield Sign & Graphics Inc., Springfield Sign

This drawing is Copyrighted material. It remains the property of Springfield Sign unless otherwise agreed upon in writing. It is unlawful to use this drawing for bidding purposes, nor can it be reproduced, copied or used in the production of a sign without written permission from Springfield Sign & Graphics.

This is an artistic rendition and final colors / sizes may vary from that depicted herein.



**SPRINGFIELD SIGN**  
www.springfieldsign.com



# MB-ID-84 INTERIOR MENU BOARD

MCCORDSVILLE, IN

Blue Indoor Menu Board

## MB-ID-84

Easy lift up & out graphic panel

American Beech Wood surround

Surround is painted black

LED internal illumination

Ultra low power consumption

FRONT VIEW



END VIEW



*Culver's*

SCALE: 3/8" = 1'

\*SCALE AND COLORS NOT REPRESENTATIVE FROM EMAIL ATTACHMENTS  
\*ALL MEASUREMENTS ARE APPROXIMATE

### NOTES

MENU BOARD TO INSTALL CENTERED TO THE FRONT CASH REGISTER COUNTER

### WOOD SURROUND



### DATE CREATED / REVISION HISTORY

04/06/23 - NEW

SALES PERSON:  
MARK WESSELL

DESIGNED BY:  
J KROEGER

AO:  
43983

© 2020 Springfield Sign & Graphics Inc., Springfield Sign

This drawing is Copyrighted material, it remains the property of Springfield Sign unless otherwise agreed upon in writing. It is unlawful to use this drawing for bidding purposes, nor can it be reproduced, copied or used in the production of a sign without written permission from Springfield Sign & Graphics.

This is an artistic rendition and final colors / sizes may vary from that depicted herein.



ENVIRONMENTALLY  
RESPONSIBLE

 **SPRINGFIELD SIGN**  
www.springfieldsign.com



# REG-HC-1 PARKING SIGN

MCCORDSVILLE, IN

## Handicapped Parking Post & Panel Sign

### REG-HC-1

All aluminum 0.080" thick panel

U-Channel steel post (green)

Bolted connection

Local codes may require actual copy/graphics to vary

Rounded corners for safety

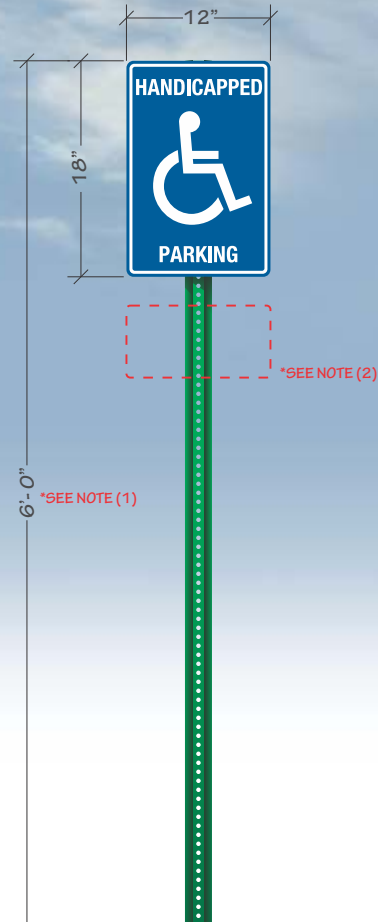
First surface vinyl (printed) copy

**NOTE 1:** Overall height can vary per local codes

**NOTE 2:** 6' x 12" sign panel may also be required

**Culver's**

SCALE: 3/4" = 1'



\*SCALE AND COLORS NOT REPRESENTATIVE FROM EMAIL ATTACHMENTS  
\*ALL MEASUREMENTS ARE APPROXIMATE

## ADDITIONAL PARKING SIGN PANELS

### STANDARD FACE OPTIONS:



### ADDITIONAL FACE OPTIONS:



SCALE: 1/2" = 1'

<b>SALES PERSON:</b>	<b>DESIGNED BY:</b>	<b>A0:</b>
MARK WESSELL	J KROEGER	43983

DATE CREATED / REVISION HISTORY	
04/06/23 - NEW	

© 2020 Springfield Sign & Graphics Inc., Springfield Sign

This drawing is Copyrighted material, it remains the property of Springfield Sign unless otherwise agreed upon in writing. It is unlawful to use this drawing for bidding purposes, nor can it be reproduced, copied or used in the production of a sign without written permission from Springfield Sign & Graphics.

This is an artistic rendition and final colors / sizes may vary from that depicted herein.



ENVIRONMENTALLY RESPONSIBLE



**SPRINGFIELD SIGN**

www.springfieldsign.com

# RR-1-G, RR-1-L, RR-3 RESTROOM SIGNS

MCCORDSVILLE, IN

## Restroom Signs

### RR-1-G RR-1-L RR-3

#### RR-1 SERIES RESTROOM SIGNS

Injection molded plastic

ADA compliant

Raised braille

Self adhesive back

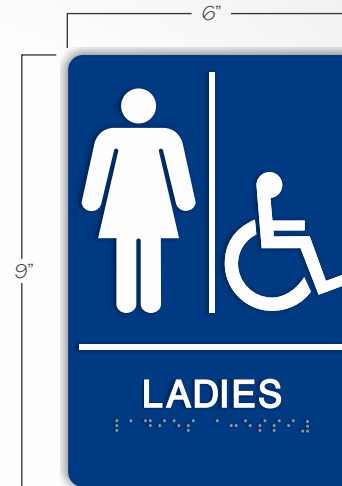
#### RR-3 SIGN

White aluminum substrate -  
laminated with black core

Digitally printed blue copy routed  
to shape



RR-1-G  
GENTLEMEN



RR-1-L  
LADIES



RR-3  
LADIES

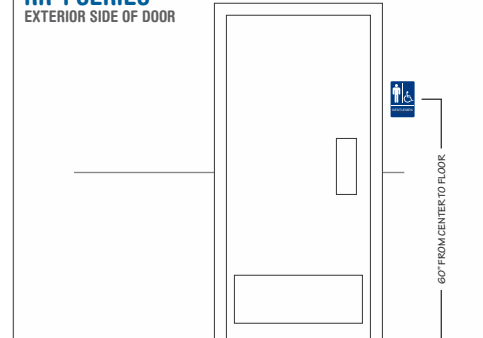
SCALE: 3" = 1'

\*SCALE AND COLORS NOT REPRESENTATIVE FROM EMAIL ATTACHMENTS  
\*ALL MEASUREMENTS ARE APPROXIMATE

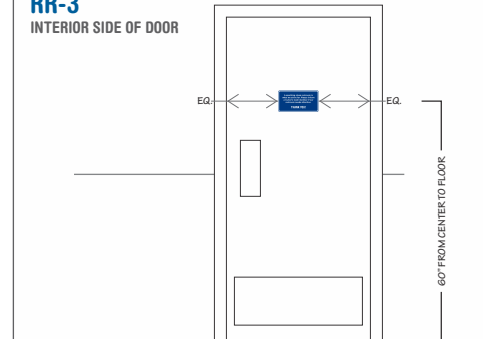
NOT FOR  
PRELIMINARY  
CONSTRUCTION

#### SIGN MOUNTING LOCATIONS

##### RR-1 SERIES EXTERIOR SIDE OF DOOR



##### RR-3 INTERIOR SIDE OF DOOR



SCALE: 1-1/2" = 1'

SALES PERSON: MARK WESSELL	DESIGNED BY: J KROEGER	A0: 43983
-------------------------------	---------------------------	--------------

#### DATE CREATED / REVISION HISTORY

04/06/23 - NEW	

*Culver's*

©2020 Springfield Sign & Graphics Inc., Springfield Sign

This drawing is Copyrighted material, it remains the property of Springfield Sign unless otherwise agreed upon in writing. It is unlawful to use this drawing for bidding purposes, nor can it be reproduced, copied or used in the production of a sign without written permission from Springfield Sign & Graphics.

This is an artistic rendition and final colors / sizes may vary from that depicted herein.



**SPRINGFIELD SIGN**  
www.springfieldsign.com



# V-1, V-5, V-6 DOOR & WINDOW VINYL

MCCORDSVILLE, IN

## Entry Door & Drive-Thru Vinyl Lettering

**V-1-1**  
**V-5-1**  
**V-6**

3M<sup>1</sup> HP white vinyl substrate

UV digitally printed image (blue)

Satin gloss over laminate

Contour cut

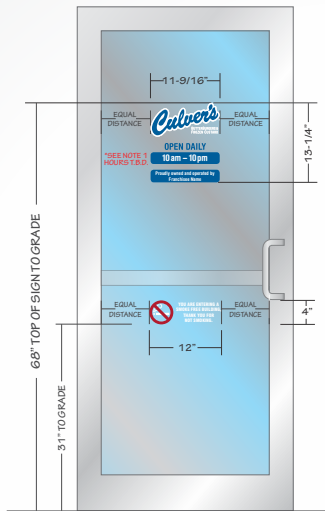
First surface application

**NOTE 1: Business hours shown are typical. However, each location may be different than shown.**

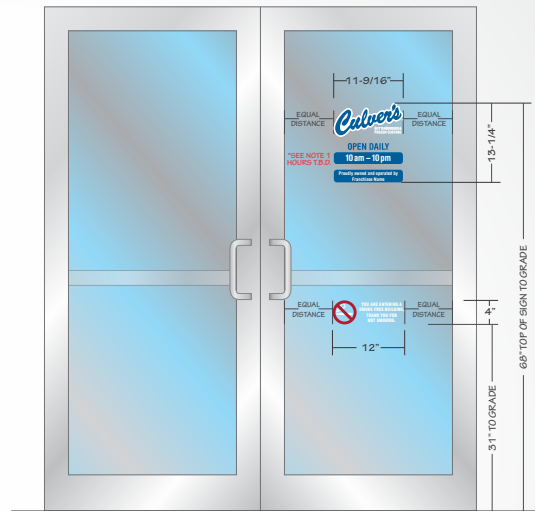
1 - 3M is a registered trademark of Minnesota Mining & Manufacturing

**Culver's**

**V-1-1 & V-6**  
TYPICAL SINGLE DOOR LAYOUT

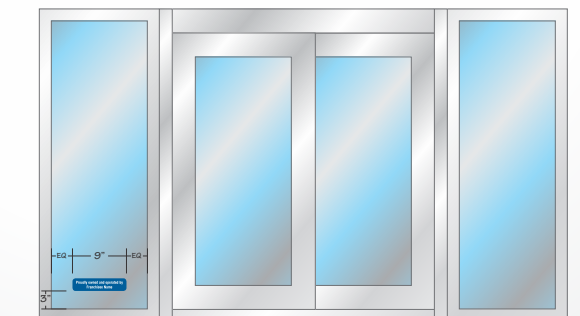


**V-1-1 & V-6**  
TYPICAL DOUBLE DOOR LAYOUT



**NOT FOR  
PRELIMINARY  
CONSTRUCTION**

**V-5-1**  
TYPICAL DRIVE-THRU LAYOUT



SCALE: 3/8" = 1'

\*SCALE AND COLORS NOT REPRESENTATIVE FROM EMAIL ATTACHMENTS  
\*ALL MEASUREMENTS ARE APPROXIMATE

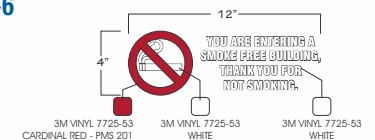
## SIGN SPECIFICATIONS

### V-1-1



SCALE: 1-1/2" = 1'

### V-6



SCALE: 1-1/2" = 1'

### V-5-1



SCALE: 1-1/2" = 1'

**SALES PERSON:**  
MARK WESSELL

**DESIGNED BY:**  
J KROEGER

**AQ:**  
43983

## DATE CREATED / REVISION HISTORY

04/06/23 - NEW

©2020 Springfield Sign & Graphics Inc., Springfield Sign

This drawing is Copyrighted material, it remains the property of Springfield Sign unless otherwise agreed upon in writing. It is unlawful to use this drawing for bidding purposes, nor can it be reproduced, copied or used in the production of a sign without written permission from Springfield Sign & Graphics.

This is an artistic rendition and final colors / sizes may vary from that depicted herein.



ENVIRONMENTALLY  
RESPONSIBLE

**SPRINGFIELD SIGN**  
www.springfieldsign.com

# VHD-1 VEHICLE HEIGHT DETECTOR

MCCORDSVILLE, IN

Vehicle Height Detector for Drive-Thru Lane

## VHD-1

All steel (painted) construction

Re-settable if engaged

Used to help protect canopies from advancing vehicles that are too tall

**NOTE:** Clearance height must be verified prior to mfg.

**QTY: 2**

*Culver's*



SCALE: 1/2" = 1'

\*SCALE AND COLORS NOT REPRESENTATIVE FROM EMAIL ATTACHMENTS  
\*ALL MEASUREMENTS ARE APPROXIMATE

NOT FOR  
PRELIMINARY  
CONSTRUCTION

### CLEARANCE PANEL

\*SEE NOTE



SCALE: 1" = 1'

SALES PERSON:	DESIGNED BY:	A0:
MARK WESSELL	J KROEGER	43983

DATE CREATED / REVISION HISTORY	
04/06/23 - NEW	

© 2020 Springfield Sign & Graphics Inc., Springfield Sign

This drawing is Copyrighted material, it remains the property of Springfield Sign unless otherwise agreed upon in writing. It is unlawful to use this drawing for bidding purposes, nor can it be reproduced, copied or used in the production of a sign without written permission from Springfield Sign & Graphics.

This is an artistic rendition and final colors / sizes may vary from that depicted herein.

 **SPRINGFIELD SIGN**  
www.springfieldsign.com



























