

# BRT Dewatering Box

## Product Information

**Blue River Technologies** can provide 20 or 30 yard roll offs fitted out with drainage pipes, netting and stop rail to facilitate the drainage of the **Geotextile Container Bags or liners**. Smooth sidewalls or bottom of a steel roll off will blind off the bag and slow the dewatering process. False bottoms made from expanded metal will rust out and then the bag can be cut or restricted from sliding out at the landfill. Perforated Steel false floors blind off nearly 50% of the bag or liner and slow the drainage process.

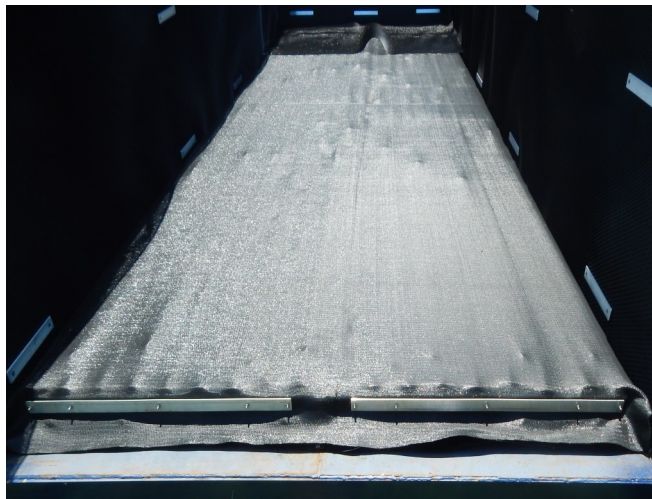
The Blue River Technologies Roll Off Boxes were developed specifically for use with Geotextile Container Bags or liners.



### Legend:

- A. Drainage netting is fixed to the sides and end of the roll off with aluminum strips and stainless steel bolts
- B. Drain Pipe encased in geotextile fabric that has a tighter weave than the container bags
- C. Stop Rail at the back prevents drainage pipe and mattress from sliding out with the bag

- The bottom of the roll off container is lined with 18 pieces of 4" heavy duty perforated Polypropylene drainage pipe. These pipes are enclosed completely by a Geotextile fabric cover or bag that is open on the back end.
- The fabric has been selected to provide drainage and at the same time is a different weave pattern than our container bags or liners. This allows the bag or liner to slide out more easily than other types of Dewatering boxes.



- The drainage pipe and cover is prevented from sliding out of the dewatering box by a heavy duty fabricated end stop bolted to the bottom of the box with stainless steel fasteners.
- An Aluminum bar bolts the drainage cover open end to this bar.



- The 1/4" X 2" Aluminum Bars that attach the end of the pipe cover to the stop bar are set up from the bottom and ends of the box to allow the effluent to drain rapidly from the box as the container bag or liner is being filled.
- Optional Drain pipes with covers can be installed on each side and the door of the roll off if desired.



- Heavy Duty GSI Hypernet drainage netting is attached to both sides and the front end of the Drainage box to facilitate drainage of effluent down the side of the smooth steel roll off walls.
- This netting is held in place by 1/4" X 1 1/2" Aluminum bars with recessed Stainless Steel fasteners.



- Hypernet 200 is approximately 3/16" thick diamond pattern heavy polypropylene drainage fabric. This material will never rust and is tough and UV resistant to last many years. It can easily be replaced if needed by removing the aluminum strips and installing new pieces in a minimal amount of time and with little labor.



- At the front of the box, the hypernet is extended out 3' over the drainage cover to keep the bag or liner from working under or in front of the drainage pipes.





## Specifications

Sides : **12 Gauge**  
Bottom: **1/4"**  
Understructure: **3" Structural Channel**  
Spacing: **20" on Center, Gusseted 40" Ctr**  
Long Sills: **6" X 2" X 3/16" Tube**  
Top Rail: **4" X 3" X 1/8" Tube**  
Uprights: **3" X 5" X 3" on Center**  
Hook Plate: **3/4" Hook Plate w/ 1 1/4" Grab Hook**  
Front Corner **Post: 6" X 6" X 3/16"**  
Wheels: **8" X 10" Steel Wheels Front & Back**  
Wheel Axles: **1 3/8" Standard w/ Grease Fittings**  
Paint: **PPG Alkyd Enamel Primer & Paint**  
Latch System: **Handle Type**

***Drain Fittings on Doors and Sides Optional***

***"The Leader In Geotextile Sludge Dewatering Systems"***

1302 Garner St, New Castle, IN 47362 | 765-388-2161 | [mconwell@nlto.net](mailto:mconwell@nlto.net)

[www.blueriverdewater.com](http://www.blueriverdewater.com)