

Renderings

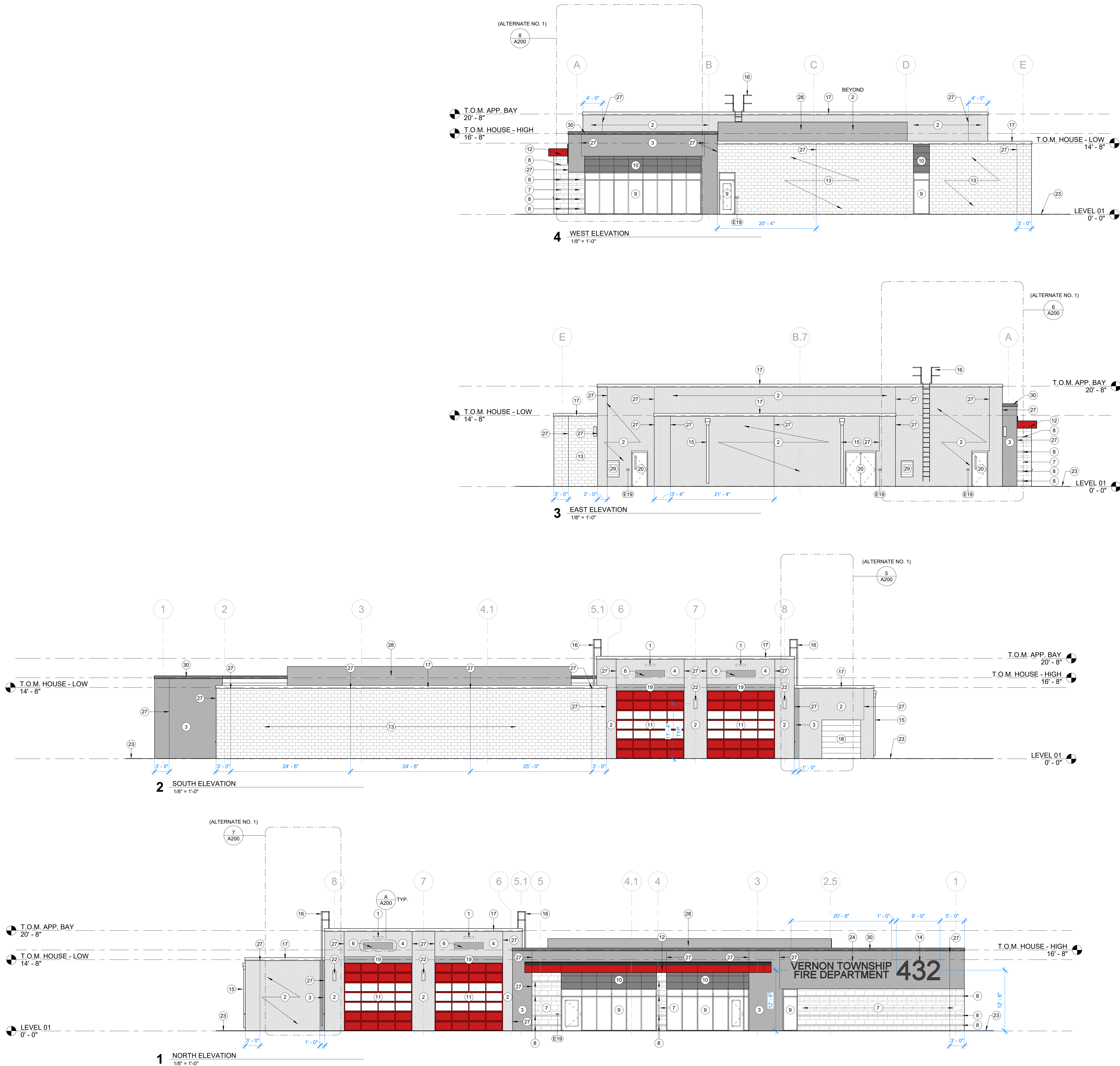
View 1



View 2



SHEET PRINTED: 6/16/2022 2:34:02 PM



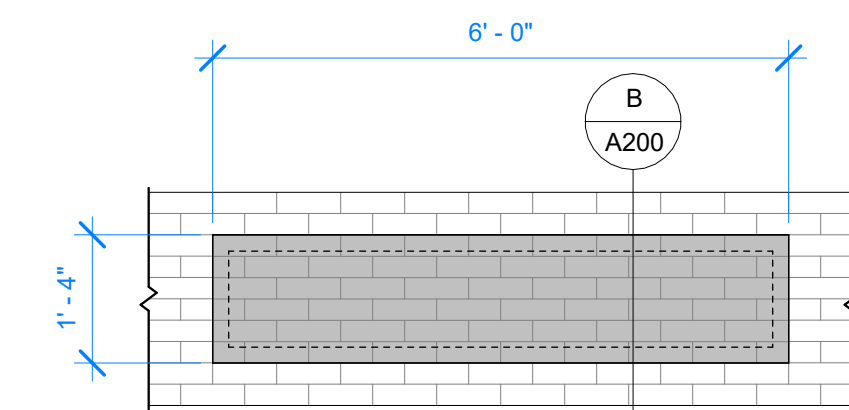
GENERAL ENVELOPE REQUIREMENTS

* THE FOLLOWING REQUIREMENTS ARE CODE MINIMUM, LISTED PRIMARILY FOR REFERENCE, AND NOT ALL MAY APPLY TO THIS PROJECT. MEETING THESE REQUIREMENTS DOES NOT EXEMPT CONTRACTOR FROM FOLLOWING OTHER SPECIFICATIONS OR DOCUMENTATION. ANY CONFLICT OR QUESTION SHALL BE REFERRED TO THE ARCHITECT FOR INTERPRETATION.

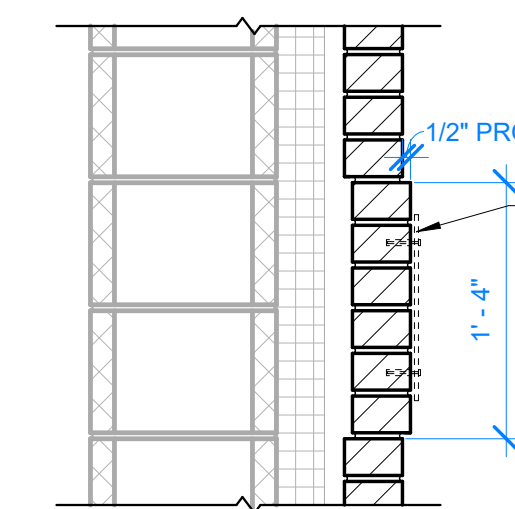
- THESE GENERAL NOTES APPLY TO THE ENTIRE PROJECT, AS IT RELATES TO THE BUILDING ENVELOPE (INCLUDING SLAB, FLOORS, FOUNDATIONS, WALLS, ROOFS, DOORS, GLAZING, SKYLIGHTS, ANY PENETRATIONS, AND ANY JOINERY IN ANY MATERIALS).
- ENSURE ALL SOURCES OF AIR LEAKAGE IN THE BUILDING THERMAL ENVELOPE ARE SEALED, CAULKED, GASKETED, WEATHER STRIPPED OR WRAPPED WITH MOISTURE VAPOR-PERMEABLE WRAPPING MATERIAL TO MINIMIZE AIR LEAKAGE.
- ENSURE FENESTRATION PRODUCTS ARE RATED IN ACCORDANCE WITH NFRC.
- ENSURE HIGH-ALBEDO ROOFS MEET SOLAR REFLECTANCE OF 0.70 AND THERMAL EMITTANCE OF 0.75 OR GREATER.
- ENSURE BUILDING ENVELOPE INSULATION IS LABELED WITH R-VALUE OR INSULATION CERTIFICATE PROVIDING R-VALUE AND OTHER RELEVANT DATA IS PROVIDED.
- ENSURE INSULATION IS INSTALLED IN SUBSTANTIAL CONTACT WITH THE INSIDE SURFACE SEPARATING CONDITIONED SPACE FROM UNCONDITIONED SPACE.
- ENSURE RECESSED EQUIPMENT INSTALLED IN BUILDING ENVELOPE ASSEMBLIES DOES NOT COMPRESS THE ADJACENT INSULATION.
- ALL STEEL MEMBERS ORIGINATING INSIDE THE BUILDING AND PROTRUDING PAST THE EXTERIOR FACE OF THE BUILDING SHALL BE INSULATED WITH A SPRAY APPLIED COATING SUITABLE FOR THE CONDITION, FROM 1' BEYOND THE EXTERIOR TO A MINIMUM OF 3' PAST THE INTERIOR FINISHED FACE OF THE WALL.
- REFER TO DETAIL C/A200 FOR MORE INFORMATION ON SUSSEX BOND PATTERN. REFER TO ENLARGED ELEVATIONS FOR DETAILS AT BUILDING CORNERS AND TRANSITIONS.

ELEVATION KEYNOTES ①

- LINEAR LIGHT FIXTURE ABOVE BAY SIGNAGE, REFER TO ELECTRICAL
- BRICK VENEER - COLOR 1 (RUNNING BOND)
- BRICK VENEER - COLOR 2 (RUNNING BOND)
- BRICK VENEER - COLOR 1 (RUNNING BOND, RECESS 1/2")
- BRICK VENEER SIGN PENDENT - COLOR 2 (RUNNING BOND, PROJECT 1/2"), REFER TO DETAILS
- STONE MASONRY VENEER (MODIFIED RUNNING BOND)
- STONE MASONRY VENEER (MODIFIED RUNNING BOND, RECESS COURSE 1/2")
- 6" DEEP, PRE-FINISHED ALUMINUM STOREFRONT
- PRE-FIN (CHARCOAL GRAY) METAL WALL PANELS, PROVIDE REVEAL JOINTS AS SHOWN, REFER TO WALL SECTIONS, SECTION DETAILS, AND ENLARGED RCP FOR DIMENSIONS. VERTICAL REVEALS TO ALIGN WITH STOREFRONT MULLIONS
- PRE-FINISHED (CUSTOM RED), INSULATED, ALUMINUM FRAMED, COMMERCIAL GRADE MOTORIZED OVERHEAD DOORS WITH GLAZING AT CENTER 6" OF PANELS
- STEEL FRAMED DECK PROJECTION CANOPY CLAD IN PRE-FIN (CUSTOM RED) METAL WALL PANELS, WITH MEMBRANE ROOF ASSEMBLY SLOPED TO DRAIN AND INTERNAL DOWNSPOUT. CONNECT TO BOOT AND STORMWATER SYSTEM. REFER TO CIVIL DRAWINGS. PROVIDE REVEAL JOINTS AS SHOWN, REFER TO ENLARGED RCP FOR DIMENSIONS
- SPLIT FACE CMU VENEER WITH INTEGRAL COLOR
- INTERNALLY LIT BUILDING SIGNAGE, 48" LETTER HEIGHT, COORDINATE POWER CONNECTION AT EACH NUMBER ABOVE CEILING OR IN CORDUIT WHERE EXPOSED
- PRE-FINISHED SHEET METAL SCUPPER AND DOWNSPOUT, REFER TO ROOF PLAN AND DETAILS. CONNECT DOWNSPOUT TO BOOT AND STORMWATER SYSTEM. REFER TO CIVIL DRAWINGS
- MANUFACTURED METAL LADDER, REFER TO ROOF PLANS AND SPECIFICATIONS
- PRE-FINISHED SHEET METAL COPING - COLOR 1
- PRE-FINISHED, UNINSULATED, ALUMINUM, COMMERCIAL GRADE MANUAL SECTIONAL OVERHEAD DOOR
- DOUBLE BRICK SOLDIER COURSE - COLOR 2
- GALVANIZED HOLLOW METAL DOOR AND FRAME (PAINTED)
- REMOVABLE 1" PRE-FINISHED ALUM. COMPOSITE PANEL IN STEEL ANGLE FRAME, REFER TO DETAILS
- DECORATIVE CYLINDRICAL LIGHT FIXTURE, REFER TO ELECTRICAL
- LINE OF GRADE OR PAVEMENT, REFER TO SITE DRAWINGS
- PRE-FINISHED BUILDING MOUNTED LETTERS, 18" HEIGHT
- PRE-FINISHED SHEET METAL SCUPPER AND DOWNSPOUT, REFER TO ROOF PLAN AND DETAILS. SPLASH DOWNSPOUT ONTO METAL SPLASH PAN SET IN SEALANT ON ROOF ON WALKWAY PAD
- INTERNALLY LIT BUILDING SIGNAGE, 60" LETTER HEIGHT, COORDINATE POWER CONNECTION AT EACH NUMBER ABOVE CEILING OR IN CORDUIT WHERE EXPOSED
- 3/8" MASONRY CONTROL JOINT, FULL HEIGHT
- PRE-FIN, CORRUGATED METAL MECHANICAL SCREEN ON STRUCTURAL STEEL FRAMING, REFER TO DETAILS AND STRUCTURAL
- MECHANICAL LOUVER, REFER TO MEP
- PRE-FINISHED SHEET METAL COPING - COLOR 2



A SIGN PENDENT PATTERN
1/2" = 1'-0"



B SIGN PENDENT SECTION
1" = 1'-0"

DELV
DESIGN

VERNON TOWNSHIP FIRE DEPARTMENT

NEW FIRE STATION 432

ARCHITECT

DELV Design
212 W 10th St, STE F125
Indianapolis, IN 46202
(317) 296-7400

MEP

Advanced Engineering Consultants
8606 Allisonville Rd, STE 270
Indianapolis, IN 46250
(317) 413-5724

STRUCTURAL

CE Solutions, Inc.
10 Shoshone Dr
Carmel, IN 46032
(317) 816-1912

CIVIL

HWC Engineering
135 N Pennsylvania Street, STE 2800
Indianapolis, IN 46204
(317) 347-3663

CONSTRUCTION MANAGER

Garmong Construction Services
5988 N Michigan Rd
Indianapolis, IN 46228
(317) 682-1001

BID PACKAGE 2



| No. | Description | Date |
|-----|-------------|------------|
| 2 | ADDENDUM 02 | 04/19/2022 |
| 3 | ADDENDUM 03 | 05/06/2022 |
| 6 | ADDENDUM 06 | 06/30/2022 |
| | | |
| | | |
| | | |
| | | |
| | | |
| | | |

PROJECT #: 21-044
ISSUE DATE: 05/06/2022
DRW: ATZ | CHK: JSS

EXTERIOR ELEVATIONS

A200