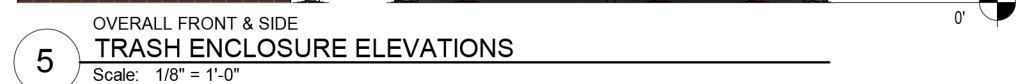




1 OVERALL BACK  
**EXTERIOR ELEVATION**  
Scale:  $1/8" = 1'-0"$



3 OVERALL FRONT  
EXTERIOR ELEVATION  
Scale: 1/8" = 1'-0"



5 TRASH ENCLOSURE ELEVATIONS  
Scale: 1/8" = 1'-0"

EXTERIOR FINISHES - Standard					
EXTERIOR INSULATED FINISH SYSTEM:	DRYVIT (SANDPEBBLE FINE) COLOR: E.I.F.S. 1 = #113 AMARILLO WHITE	STANDING SEAM AWNING:	FIRESTONE UNA-CLAD KYNAR 500 / HYLAR METAL 5000 FLUOROCARBON STEEL "CHAMPAGNE METALLIC", UNDERSIDE & FRAME TO BE PAINTED SW 6152 "SUPERIOR BRONZE"	STOREFRONT SYSTEM:	2x4 1/2" KAWNEER TRIFAB VG 451T SERIES CLEAR ANODIZED ALUMINUM STOREFRONT SYSTEM w/ 1" INSULATED GLAZING.
BRICK WAINSCOT: (GRADE TO PRECAST SILL)	BELDEN - "MODULAR MIDLAND BLEND A"			H.M. DOORS & FRAMES:	FIELD PAINT w/SHERWIN-WILLIAMS B66-310 PRO-CYRL PRIMER FOLLOWED BY (2) FINISH COATS OF B66-300 SHER-CYRL HPA. COLOR SHALL BE SW-7515 "HOMESTEAD BROWN". PROVIDE MOCK-UP AND VERIFY COLOR W/OWNER
FACE BRICK (ABOVE WAINSCOT):	BELDEN - "MODULAR HAMILTON BLEND A"	ROOF SHINGLES:	OWENS CORNING DURATION SERIES "DRIFTWOOD"	O.H. DOOR FINISH:	CLEAR ANODIZED ALUMINUM
BRICK SOLDIER COURSE:	BELDEN - "MODULAR HAMILTON BLEND A"	MISC. ROOF VENTS, FANS, ETC.	PAINT SW7046 "ANONYMOUS"	PARKING LOT STRIPING:	SHERWIN-WILLIAMS #TM226 SETFAST TM PAINT. COLOR SHALL BE "WHITE".
PRECAST SILL: (REFER TO SILL PROFILE)	CUSTOM CAST STONE - "LIGHT BUFF"			HANDICAP STALL STRIPING:	SHERWIN-WILLIAMS #TM2133 SETFAST TM PAINT. COLOR SHALL BE "ADA BLUE".
MORTAR:	LEHIGH - "LIGHT BEIGE"	GUTTER, DOWNSPOUTS, FASCIA & EXPOSED TRIM:	BERRIDGE - "SIERRA TAN"		
MASONRY SEALER:	ALL MASONRY SURFACES SHALL BE TREATED w/ SEALER. REFER TO SPECIFICATIONS.				

VALVOLINE INSTANT OIL CHANGE

# McCordsville

© 2021 CESO, INC



Project No: 759383-01

No.	Revisions/ Submissions	Date
-----	------------------------	------

Revisions/ Submissions

No.

2021 03 04

5

cc118.

