

Subarea D - Patio

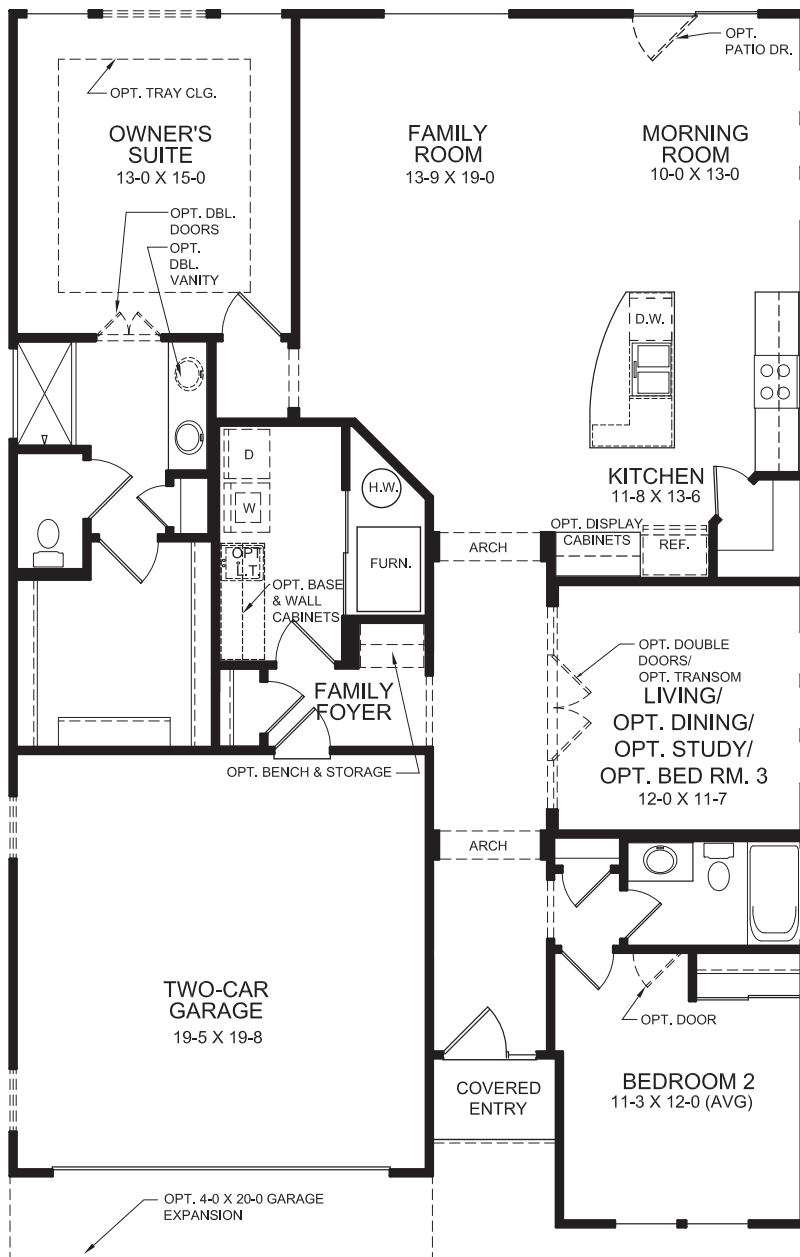
- **Amelia**
- **Edenton**
- **Kiawah**
- **Maxwell**
- **Wilmington**
- **Winthrop**

welcome home.

Approximately 1683 sq ft and Up

PLAN FEATURES

- Two Bedroom Home with Living/ Dining/Optional Study/Optional Bedroom #3 Flex Space
- Included 9ft First Floor Ceiling Height
- Family Foyer with Optional Drop Zone Built-ins
- Open Kitchen Design with Island Seating and Spacious Corner Pantry
- Alternate Semi-enclosed Kitchen Design
- Private Owner's Suite with Owner's Bath and Large Walk-In Closet
- Optional Deluxe Shower in Owner's Bath
- Optional Direct Access from Owner's W.I.C. to Laundry
- Optional Covered Rear Patio/ Deck
- Optional Sunroom
- Optional 4ft Garage Expansion
- Optional Loft with Optional Bedroom and Full Bath
- Optional Basement
- Optional Finished Lower Level with Optional Basement



FIRST FLOOR DESIGN

(INCLUDES 9 FT FIRST FLOOR CEILING HEIGHT)

Images & Options Available at fischerhomes.com



Copyright © 2021 Fischer Homes, Inc. "Because we are constantly improving our product, we reserve the right to change features, brand names, dimensions, architectural details and designs. This brochure is for illustrative purposes only and not part of a legal contract. Windows, doors, and ceilings may vary on options and elevations selected. Not all features nor options are shown. Please ask our sales counselor for complete information."

RVSD. 02/21
IM 02/21

Our Plans Include You

The Amelia American Classic with Stone

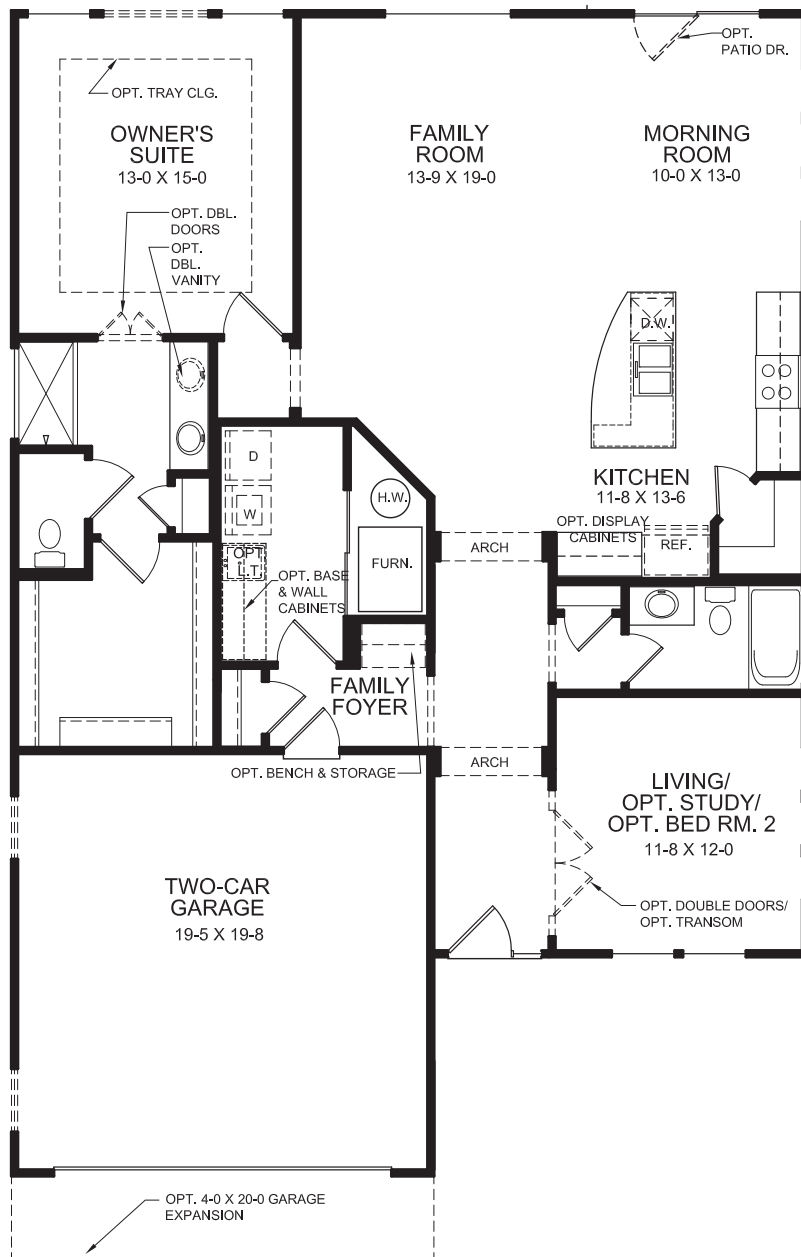


The Amelia Coastal Cottage with Stone



welcome home.

Approximately 1501 sq ft and Up



PLAN FEATURES

- One Bedroom Home with Living/Optional Study/Optional Bedroom #2 Flex Space
- Included 9ft First Floor Ceiling Height
- Family Foyer with Optional Drop Zone Built-ins
- Open Kitchen Design with Island Seating and Spacious Corner Pantry
- Alternate Semi-enclosed Kitchen Design
- Private Owner's Suite with Owner's Bath and Large Walk-In Closet
- Optional Deluxe Shower in Owner's Bath
- Optional Direct Access from Owner's W.I.C. to Laundry
- Optional Covered Rear Patio/Deck
- Optional Sunroom
- Optional 4ft Garage Expansion
- Optional Loft with Optional Bedroom and Full Bath
- Optional Basement
- Optional Finished Lower Level with Optional Basement

FIRST FLOOR DESIGN

(INCLUDES 9 FT FIRST FLOOR CEILING HEIGHT)



Images & Options Available at fischerhomes.com

Copyright © 2021 Fischer Homes, Inc. "Because we are constantly improving our product, we reserve the right to change features, brand names, dimensions, architectural details and designs. This brochure is for illustrative purposes only and not part of a legal contract. Windows, doors, and ceilings may vary on options and elevations selected. Not all features nor options are shown. Please ask our sales counselor for complete information."

RVSD. 02/21
IM 02/21

Our Plans Include You

The Edenton American Classic with Stone

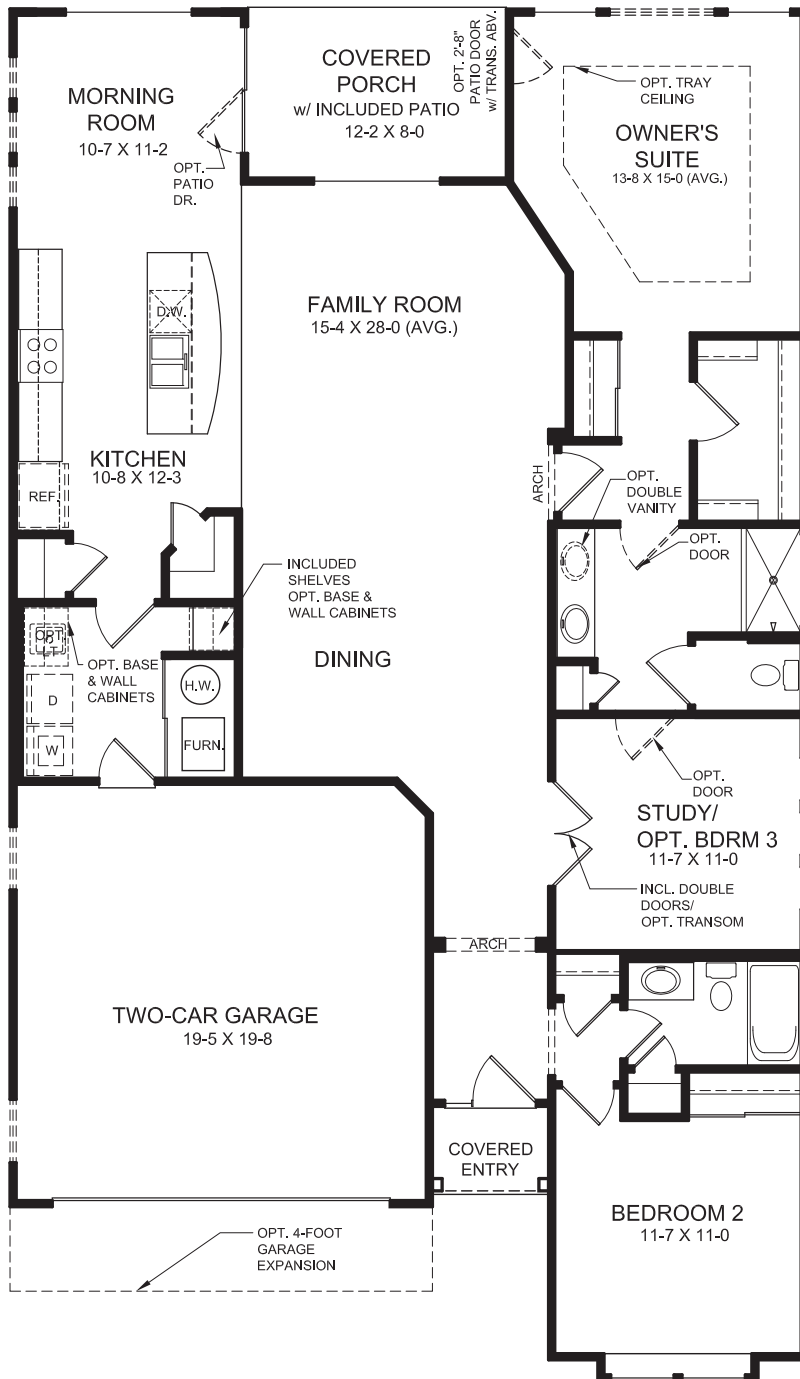


The Edenton Coastal Cottage with Stone



welcome home.

Approximately 1720 sq ft and Up



PLAN FEATURES

- Two Bedroom Home with Included Study/Optional Bedroom #3 Flex Space
- Included 9ft First Floor Ceiling Height
- Included Casual and Formal Dining Spaces
- Open Kitchen Design with Island Seating and Pantry
- Private Owner's Suite with Owner's Bath and Large Walk-In Closet
- Optional Deluxe Shower in Owner's Bath
- Optional Adjoining Study/Bedroom to Owner's Bath
- Included Covered Rear Porch
- Optional Sunroom
- Optional 4ft Garage Expansion
- Optional Loft with Optional Bedroom and Full Bath
- Optional Basement
- Optional Finished Lower Level with Optional Basement

FIRST FLOOR DESIGN

(INCLUDES 9 FT FIRST FLOOR CEILING HEIGHT)

Images & Options Available at fischerhomes.com



Copyright © 2021 Fischer Homes, Inc. "Because we are constantly improving our product, we reserve the right to change features, brand names, dimensions, architectural details and designs. This brochure is for illustrative purposes only and not part of a legal contract. Windows, doors, and ceilings may vary on options and elevations selected. Not all features nor options are shown. Please ask our sales counselor for complete information."

RVSD. 02/21
IM 02/21

Our Plans Include You

The Kiawah American Classic with Stone

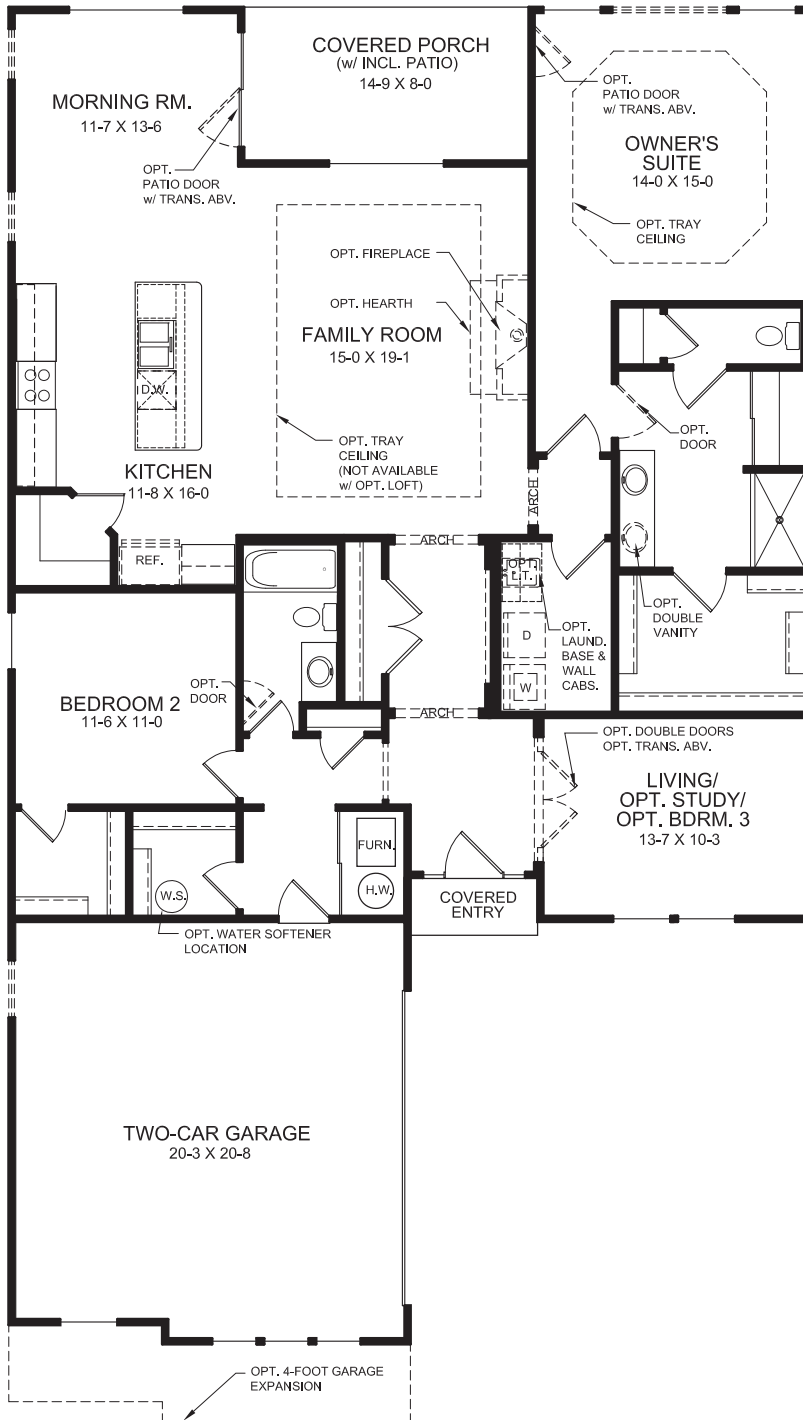


The Kiawah Coastal Cottage with Stone



welcome home.

Approximately 1856 sq ft and Up



PLAN FEATURES

- Two Bedroom Home with Living/Optional Study/Optional Bedroom #3 Flex Space
- Included 9ft First Floor Ceiling Height
- Family Foyer with Optional Drop Zone Built-ins
- Open Kitchen Design with Island Seating and Large Corner Pantry
- Alternate Semi-enclosed Kitchen Design
- Optional Built-in Appliance Kitchen
- Spacious Family Room with Optional Tray Ceiling
- Private Owner's Suite with Owner's Bath and Large Walk-In Closet
- Variety of Owner's Bath Design Configurations
- Included Covered Rear Porch
- Optional Sunroom
- Optional 4ft Garage Expansion
- Optional Loft with Optional Bedroom and Full Bath
- Optional Basement
- Optional Finished Lower Level with Optional Basement

FIRST FLOOR DESIGN

(INCLUDES 9 FT FIRST FLOOR CEILING HEIGHT)



Images & Options Available at fischerhomes.com

Copyright © 2021 Fischer Homes, Inc. "Because we are constantly improving our product, we reserve the right to change features, brand names, dimensions, architectural details and designs. This brochure is for illustrative purposes only and not part of a legal contract. Windows, doors, and ceilings may vary on options and elevations selected. Not all features nor options are shown. Please ask our sales counselor for complete information."

RVSD. 02/21
IM 02/21

Our Plans Include You

The Maxwell American Classic with Brick



The Maxwell American Classic with Stone

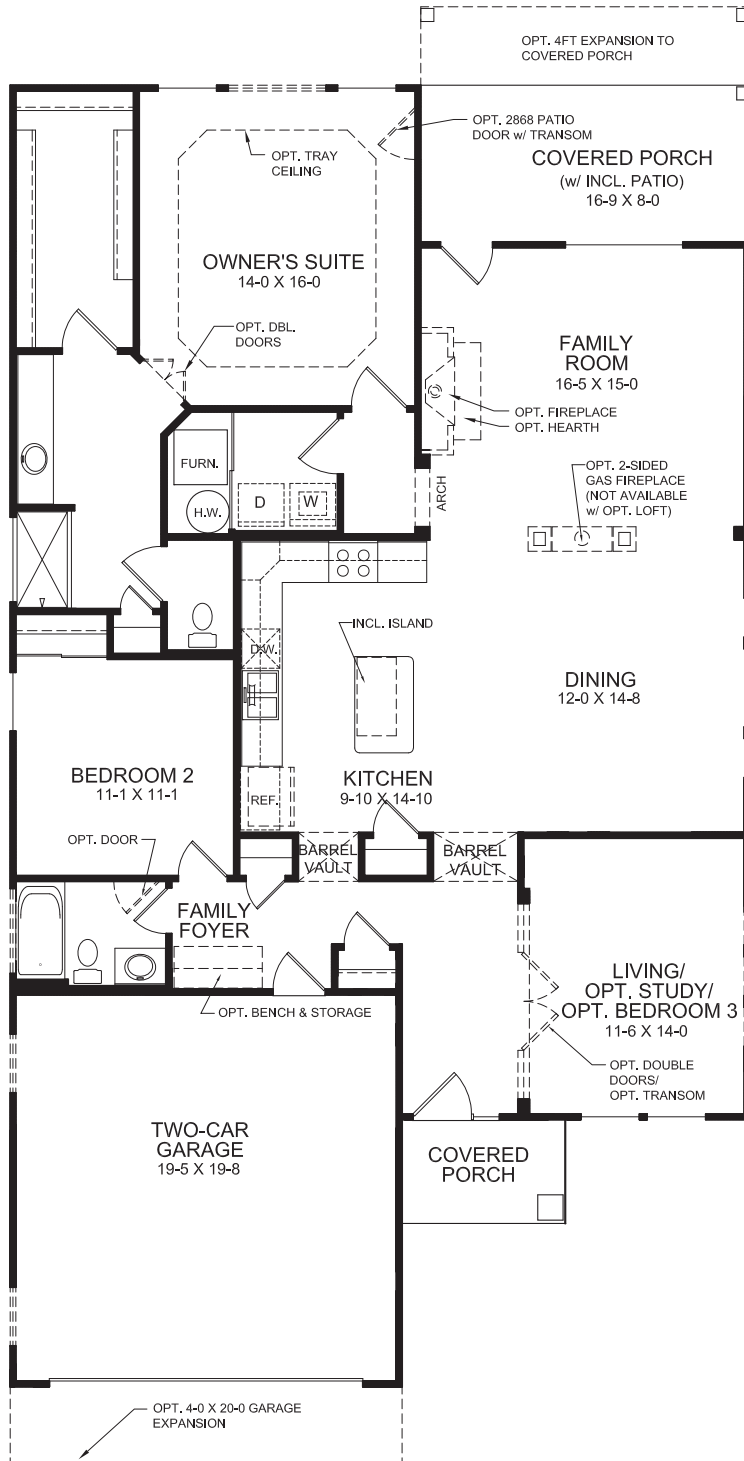


The Maxwell Coastal Cottage with Brick



The Maxwell Coastal Cottage with Stone





PLAN FEATURES

- Two Bedroom Home with Living/Optional Study/Optional Bedroom #3 Flex Space
- Included 9ft First Floor Ceiling Height
- Family Foyer with Optional Drop Zone Built-ins
- Open Plan Design with Spacious Dining and Family Room Spaces
- Private Owner's Suite with Owner's Bath and Large Walk-In Closet
- Optional Deluxe Shower in Owner's Bath
- Optional Adjoining Bedroom to Owner's Bath
- Included Covered Rear Porch
- Optional Sunroom
- Optional 4ft Garage Expansion
- Optional Loft with Optional Bedroom and Full Bath
- Optional Basement
- Optional Finished Lower Level with Optional Basement

FIRST FLOOR DESIGN

(INCLUDES 9 FT FIRST FLOOR CEILING HEIGHT)



Images & Options Available at fischerhomes.com

Copyright © 2021 Fischer Homes, Inc. "Because we are constantly improving our product, we reserve the right to change features, brand names, dimensions, architectural details and designs. This brochure is for illustrative purposes only and not part of a legal contract. Windows, doors, and ceilings may vary on options and elevations selected. Not all features nor options are shown. Please ask our sales counselor for complete information."

RVSD.03/21
IM 03/21

The Wilmington American Classic with Stone

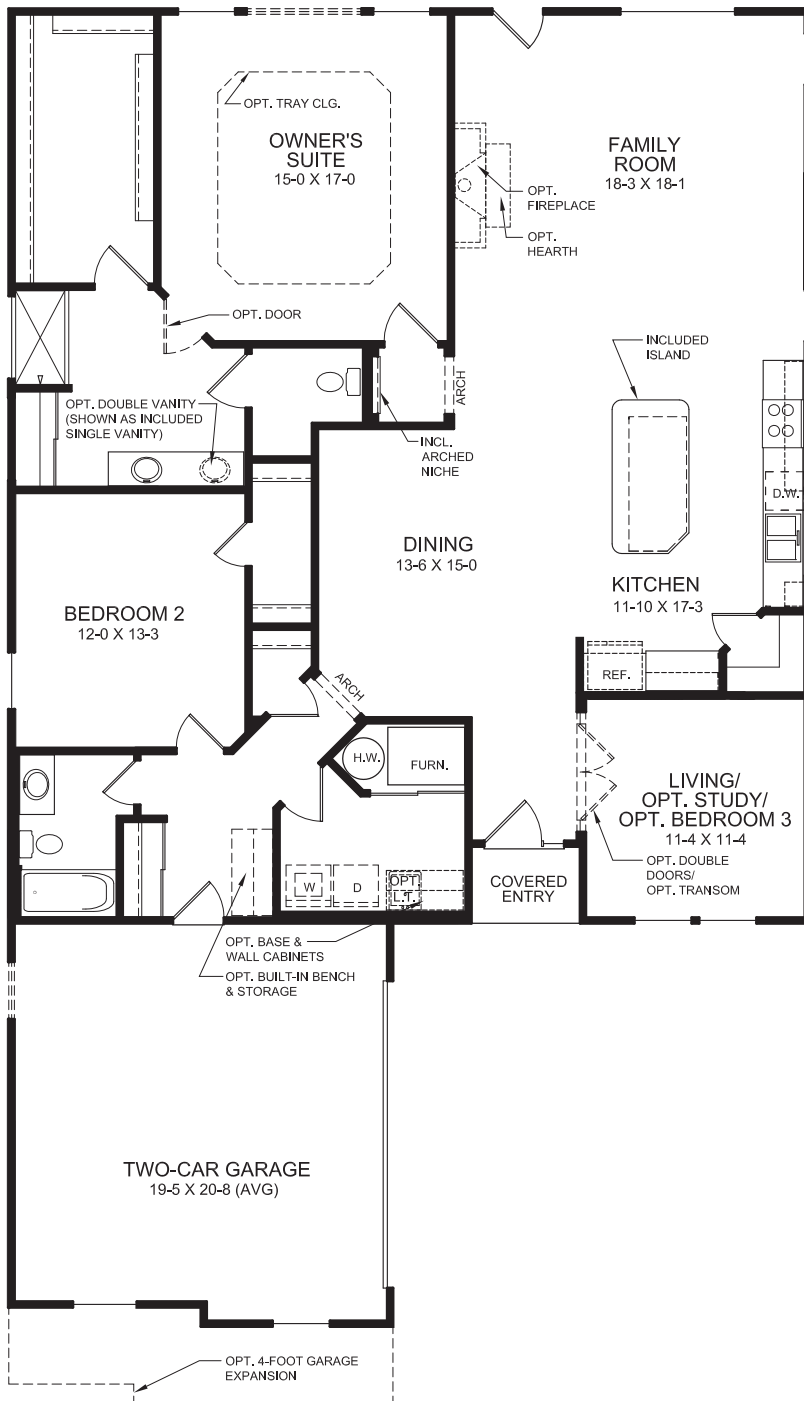


The Wilmington Coastal Cottage with Stone



welcome home.

Approximately 1966 sq ft and Up



PLAN FEATURES

- Two Bedroom Home with Living/Optional Study/Optional Bedroom #3 Flex Space
- Included 9ft First Floor Ceiling Height
- Family Foyer with Optional Drop Zone Built-ins
- Open Plan Design with Spacious Dining and Family Room Spaces
- Large Kitchen Island with Seating and Corner Pantry
- Optional Built-in Appliance Kitchen
- Private Owner's Suite with Owner's Bath and Large Walk-In Closet
- Variety of Owner's Bath Design Configurations
- Optional Covered Rear Patio/Deck
- Optional Sunroom
- Optional 4ft Garage Expansion
- Optional Loft with Optional Bedroom and Full Bath
- Optional Basement
- Optional Finished Lower Level with Optional Basement

FIRST FLOOR DESIGN

(INCLUDES 9 FT FIRST FLOOR CEILING HEIGHT)



Images & Options Available at fischerhomes.com

Copyright © 2021 Fischer Homes, Inc. "Because we are constantly improving our product, we reserve the right to change features, brand names, dimensions, architectural details and designs. This brochure is for illustrative purposes only and not part of a legal contract. Windows, doors, and ceilings may vary on options and elevations selected. Not all features nor options are shown. Please ask our sales counselor for complete information."

RVSD.02/21
IM 02/21

Our Plans Include You

The Winthrop American Classic with Brick



The Winthrop American Classic with Stone



The Winthrop Coastal Cottage with Brick



The Winthrop Coastal Cottage with Stone

