

2 OVERALL RIGHT SIDE EXTERIOR ELEVATION
Scale: 1/8" = 1'-0"

1 OVERALL BACK EXTERIOR ELEVATION
Scale: 1/8" = 1'-0"



4 EXTERIOR ELEVATION
Scale: 1/8" = 1'-0"

3 OVERALL FRONT EXTERIOR ELEVATION
Scale: 1/8" = 1'-0"



5 OVERALL FRONT & SIDE TRASH ENCLOSURE ELEVATIONS
Scale: 1/8" = 1'-0"

FRONT FACADE FEATURES: 1. CHANGE IN MATERIAL 2. CHANGE IN MATERIAL DEPTHS 3. WALL PLANE BREAK	LENGTH OF TOWER: 38' - 4" 3' - 0" BUMP OUTS = 23.5% S = SPANDREL GLASS
--	--

EXTERIOR FINISHES - Standard

EXTERIOR INSULATED FINISH SYSTEM:	DRYVIT (SANDPEBBLE FINE) COLOR: E.I.F.S. 1 = #113 AMARILLO WHITE	STANDING SEAM AWNING:	FIRESTONE UNA-CLAD KYNAR 500 / HYLAR METAL 5000 FLUOROCARBON STEEL "CHAMPAGNE METALLIC", UNDERSIDE & FRAME TO BE PAINTED SW 6152 "SUPERIOR BRONZE"
BRICK WAJNSCOT: (GRADE TO PRECAST SILL)	BELDEN - "MODULAR MIDLAND BLEND A"	ROOF SHINGLES:	OWENS CORNING DURATION SERIES "DRIFTWOOD"
FACE BRICK (ABOVE WAJNSCOT):	BELDEN - "MODULAR HAMILTON BLEND A"	MISC. ROOF VENTS, FANS, ETC.	PAINT SW7046 "ANONYMOUS"
BRICK SOLDIER COURSE: (REFER TO SILL PROFILE)	BELDEN - "MODULAR HAMILTON BLEND A"	GUTTER, DOWNSPOUTS, FASCIA & EXPOSED TRIM:	BERRIDGE - "SIERRA TAN"
PRECAST SILL: (REFER TO SILL PROFILE)	CUSTOM CAST STONE - "LIGHT BUFF"		
MORTAR:	LEHIGH - "LIGHT BEIGE"		
MASONRY SEALER:	ALL MASONRY SURFACES SHALL BE TREATED w/ SEALER. REFER TO SPECIFICATIONS.		

STOREFRONT SYSTEM:	2x4 1/2" KAWNEER TRIFAB VG 451T SERIES CLEAR ANODIZED ALUMINUM STOREFRONT SYSTEM w/ 1" INSULATED GLAZING.
H.M. DOORS & FRAMES:	FIELD PAINT w/SHERWIN-WILLIAMS B66-310 PRO-CYRL PRIMER FOLLOWED BY (2) FINISH COATS OF B66-300 SHER-CYRL HPA. COLOR SHALL BE SW-7515 "HOMESTEAD BROWN". PROVIDE MOCK-UP AND VERIFY COLOR w/OWNER CLEAR ANODIZED ALUMINUM
O.H. DOOR FINISH:	
PARKING LOT STRIPING:	SHERWIN-WILLIAMS #TM226 SETFAST TM PAINT. COLOR SHALL BE "WHITE".
HANDICAP STALL STRIPING:	SHERWIN-WILLIAMS #TM2133 SETFAST TM PAINT. COLOR SHALL BE "ADA BLUE".

VALVOLINE INSTANT OIL CHANGE

McCordsville

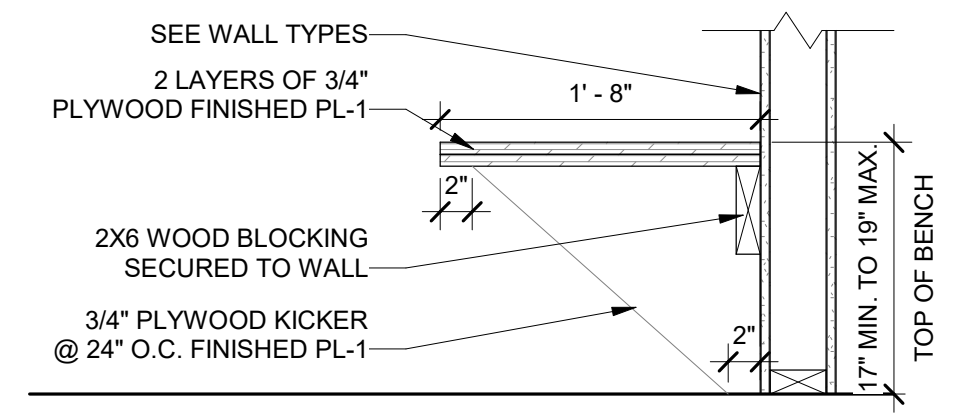
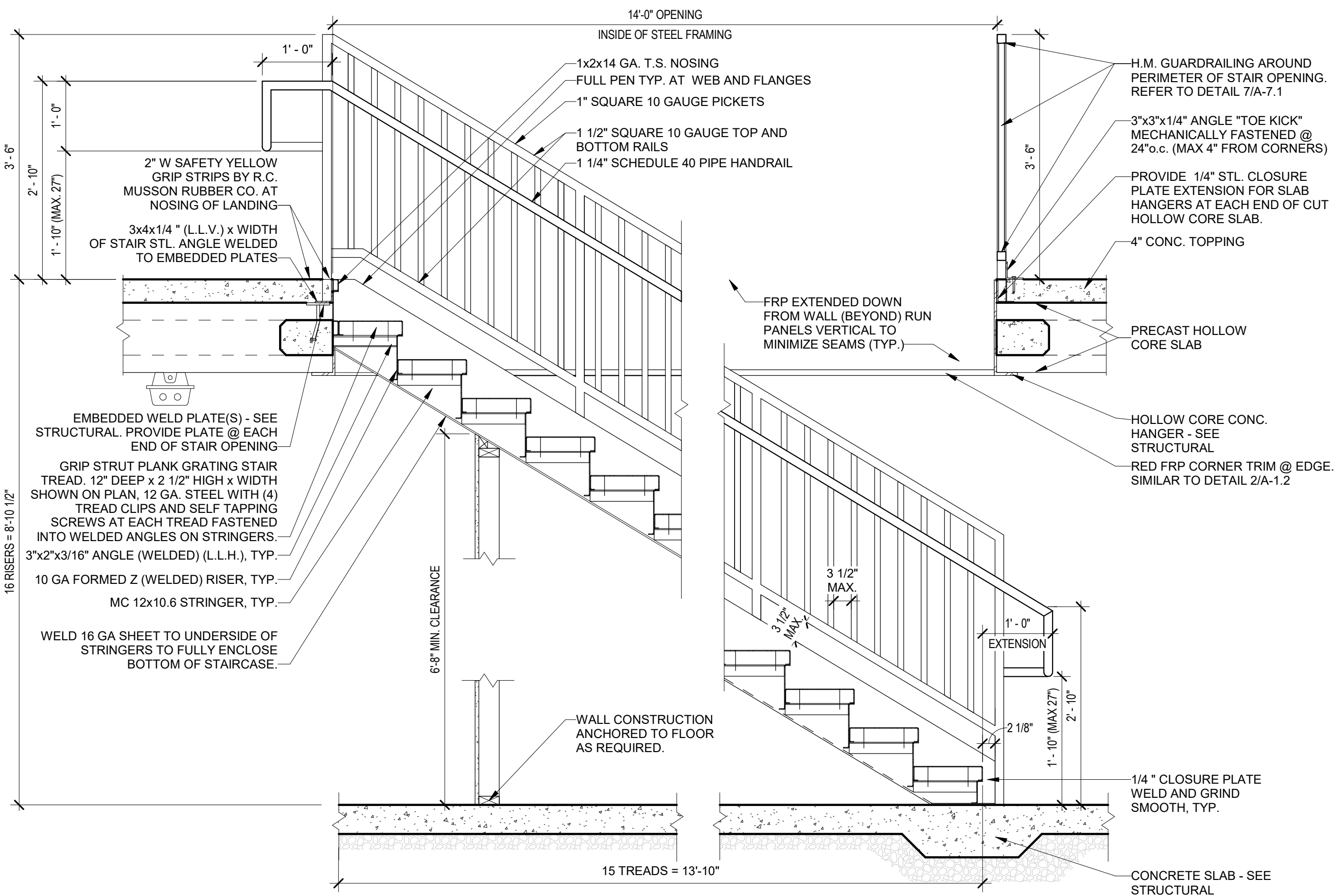
© 2021 CESO, INC



Project No: 759383-01

Date	2021.08.02
Revisions/ Submissions	
No.	Issue: CD

BIM 360//VIOC-McCordsville/McCordsville IN.rvt 12/1/2021 9:34:22 AM

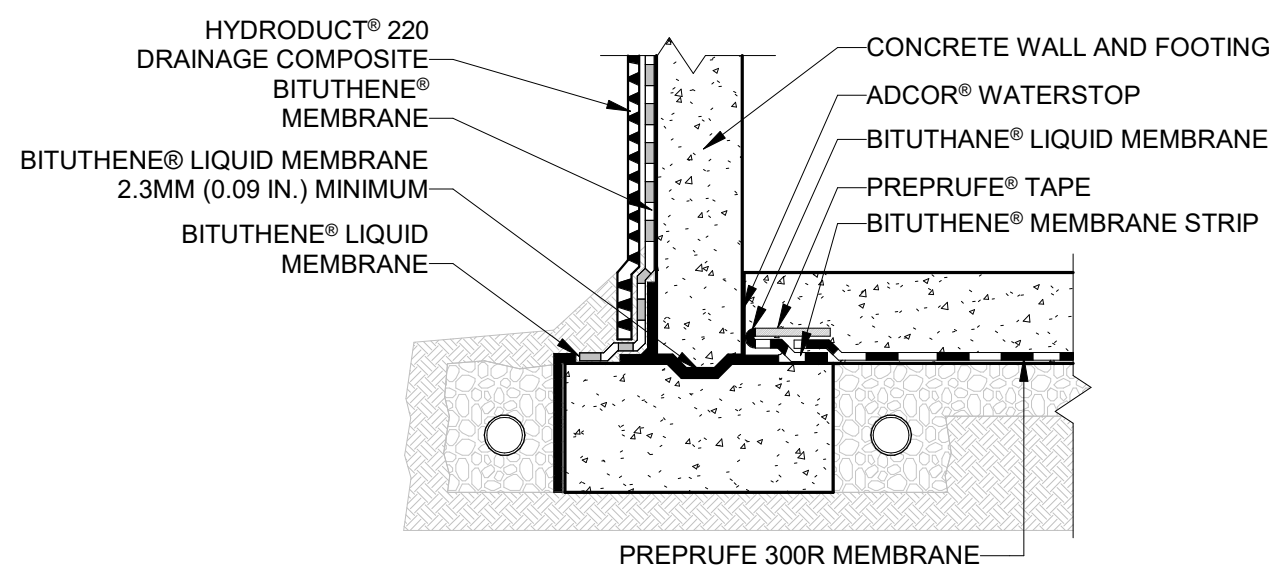


3 BENCH DETAIL
A-1.1 Scale: 1" = 1'-0"

- FLOOR PLAN KEY NOTES:**
- 1" PVC CHASE UP THRU SLAB w/ LIP OF PIPE EXTENDING 1' BELOW FINISH FACE OF CEILING. COORDINATE LOCATION w/ STRUCTURAL, PLUMBING, AND CEILING PLANS.
 - LINE OF CHASE ABOVE
 - ROUTE PROCESS PIPING FROM DRUM TRANSFER STATION @ UPPER LEVEL, DOWN IN CHASE TO LUBE BAR DRUM TRANSFER IN LUBE PIT. COORDINATE ROUTING IN FIELD
 - MECHANICAL DUCT ABOVE. SEE MECHANICAL PLANS.
 - PROVIDE UNDERSLAB WATERPROOFING BENEATH ENTIRE LOWER LEVEL - SEE WATERPROOFING DETAILS ON THIS SHEET.
 - ABOVE SLAB SUMP PUMP - SEE PLUMBING
 - LUBE PIT/SUMP CROCK BASIN - SEE PLUMBING
 - BUMP HAT STORAGE
 - WALL ENCLOSURE UNDER STAIRS. INSTALL 5/8" PLYWOOD OVER 2X4 STUDS. FINISHED FACE OF PLYWOOD TO BE ALIGNED WITH OUTSIDE FACE OF STAIR STRINGER. INSTALL W-2 ON SURFACE, ALL SIDES
 - TIRE ROTATION AIR LINE LOCATION. G.C. TO COORDINATE W/ VENDOR
 - CHANGING BENCH - SEE DETAIL ON THIS SHEET
 - OIL/WATER SEPARATOR AND STAND - SEE PLUMBING

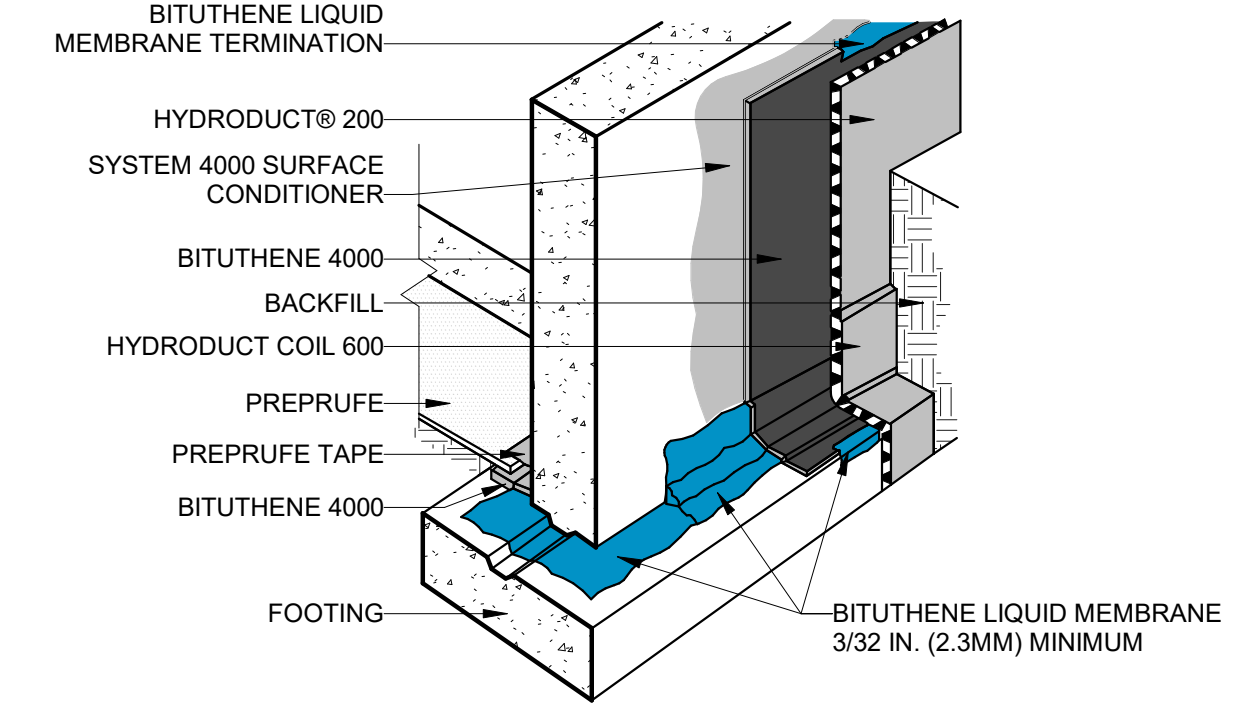
- GENERAL NOTES**
- INTERIOR WALLS SURROUNDING RESTROOMS AND OFFICE SHALL BE PROVIDED w/ SOUND BATT INSULATION TO EXTEND FULL HEIGHT TO TRUSS, OR JOIST SPACE TO ACHIEVE VIOC ACCEPTABLE SOUND ENCLOSURE. VAPOR BARRIER IS NOT REQUIRED IN THESE WALLS. EXTERIOR WALLS PER R-VALUES REQUIRED. REFER TO SHEET A-4.1.
 - ALL EXTERIOR WALLS & AREAS ABOVE CEILING (JOIST & TRUSS SPACES) SHALL BE PROVIDED WITH BATT INSULATION TO ACHIEVE A COMPLETELY INSULATED THERMAL ENVELOPE AS REQUIRED. PROVIDE VAPOR BARRIER PER LOCAL CLIMATE REQUIREMENTS. BLOWN-IN INSULATION IS UNACCEPTABLE.
 - ALL GYPSUM BOARD IN SERVICE BAYS AND STORAGE AREA SHALL BE 5/8" HIGH ABUSE FIRE SHIELD BY NATIONAL GYPSUM.
 - ALL WALLS EXTENDING TO UNDERSIDE OF TRUSSES SHALL BE BRACED TO STRUCTURE AS REQUIRED. PROVIDE NECESSARY BLOCKING FOR STABLE, SECURE INSTALLATION.
 - REFER TO SHEET G-3.1 FOR EQUIPMENT SCHEDULES AND LOCATIONS.
 - DIMENSIONS FOR INTERIOR WALLS ON PLANS ARE TO ROUGH FRAMING (U.N.O.) EXTERIOR DIMENSIONS ARE TO FINISHED SURFACES AND OPENINGS.
 - REFER TO STRUCTURAL FOR FLOOR PENETRATION LOCATIONS
 - POLYETHYLENE VAPOR BARRIER TO BE USED ON WALL/CEILING APPLICATIONS WHERE UNFACED BATT INSULATION IS USED.

4 STAIR DETAIL
A-1.1 Scale: 3/4" = 1'-0"



THIS DRAWING DEPICTS MANUFACTURER'S STANDARD WATERPROOFING DETAILS. REFER TO DRAWINGS HEREIN FOR SPECIFIC FOUNDATION CONSTRUCTION.

NOTE: THE ABOVE IS WITHIN GRACE MANUFACTURING WARRANTY SPECIFICATIONS. THIS DETAIL IN NO WAY RELIEVES THE CONTRACTOR FROM FOLLOWING ALL MANUFACTURER SPECIFICATIONS.

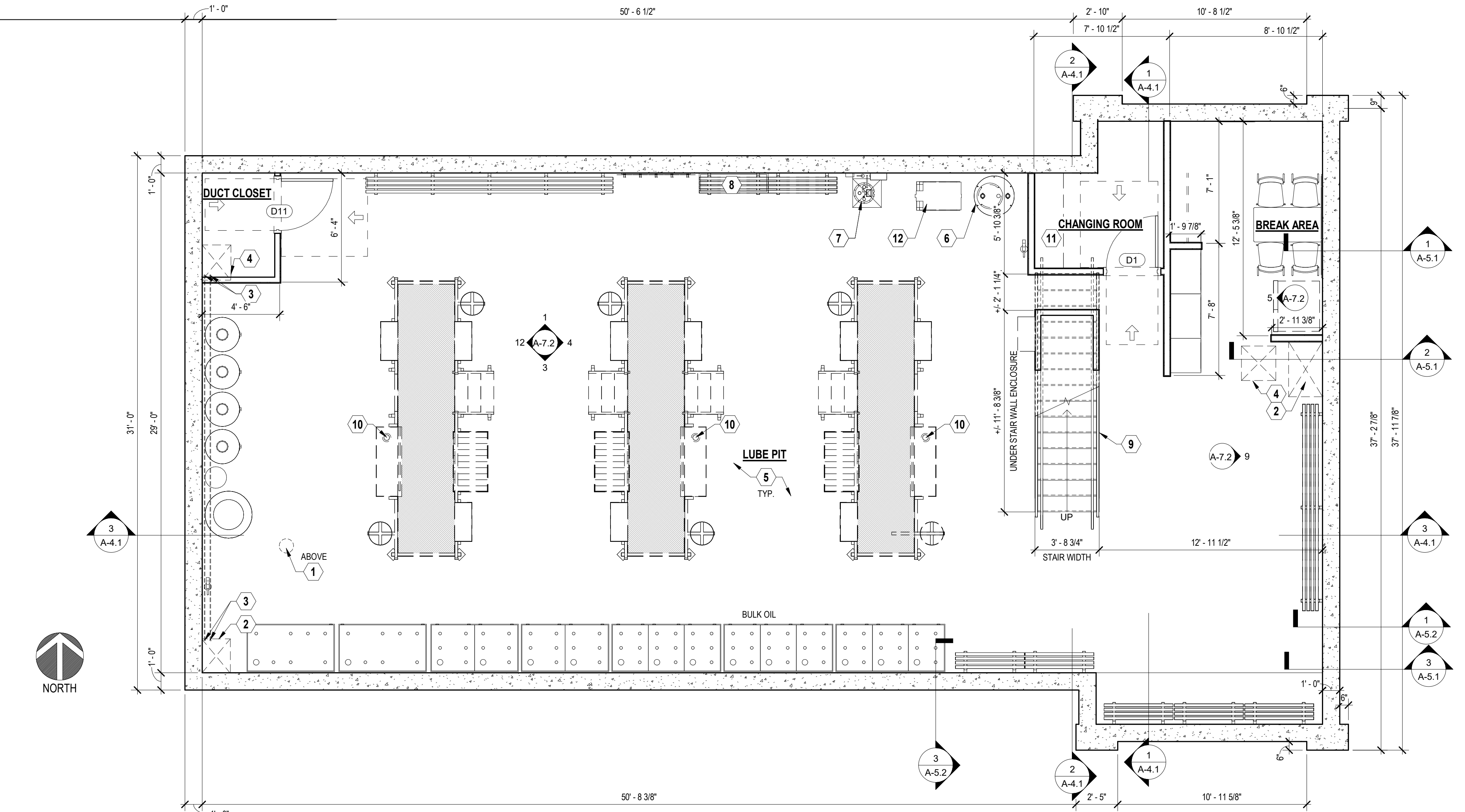


GCP APPLIED TECHNOLOGIES MEMBRANE INSTALLATION

ALL SURFACES MUST BE FREE FROM DIRT, GREASE, DUST, CONCRETE GROUT, OR OTHER CONTAMINANTS.

BITUTHENE LIQUID MAY BE APPLIED AT TEMPERATURES ABOVE 26° F

2 WATERPROOFING DETAIL
A-1.1 Scale: 1/4" = 1'-0"



1 FLOOR PLAN - LOWER LEVEL
A-1.1 Scale: 1/4" = 1'-0"

Date	Revisions/Submissions


VALVOLINE INSTANT OIL CHANGE
 PENDLETON PIKE MCCORDSVILLE, IN 46055

© 2021 CESO, INC

Project number:	759383-01
Scale:	As indicated
Drawn:	RLD
Checked:	XXX
Date:	2021.12.21
Issue:	CD
Drawing Title:	FLOOR PLAN - LOWER LEVEL

FINISH SCHEDULE

ROOM	FLOOR	BASE	WALLS			CEILING/ EXPOSED STRUCTURE	REMARKS
			FULL HEIGHT	WAINSCOT BOTTOM	WAINSCOT TOP		
UPPER LEVEL							
WAITING	F-2	B-1	PR-3PT-1	W-1	PR-3PT-1	PR-3PT-3	SEE INTERIOR ELEVATIONS FOR WAINSCOT
SERVICE BAY/ STORAGE	F-1	B-2	PR-3PT-5	W-2	PR-3PT-5	PR-3PT-5	SEE INTERIOR ELEVATIONS FOR WAINSCOT
DRUM TRANSFER STATION	F-1	B-2	PR-3PT-5	N/A	N/A	PR-3PT-3	N/A
UTILITY	F-3	B-1	PR-3PT-5	W-1	PR-3PT-5	PR-3PT-3	SEE INTERIOR ELEVATIONS FOR WAINSCOT
OFFICE	F-2	B-1	PR-3PT-5	W-1	PR-3PT-5	PR-3PT-3	SEE INTERIOR ELEVATIONS FOR WAINSCOT
UNISEX RESTROOM	F-2	B-1	PR-3PT-1	W-1	PR-3PT-1	PR-3PT-3	SEE INTERIOR ELEVATIONS FOR WAINSCOT
MECHANICAL	F-3	B-1	PR-1PT-5	N/A	N/A	PR-2PT-5	N/A
ACCESS CHASE	N/A	N/A	N/A	N/A	N/A	N/A	N/A
LOWER LEVEL							
LUBE PIT	F-3	B-1B-2	PR-1PT-5	W-2	N/A	PR-2PT-5	W-2/B-2 STAIR WELL ONLY
BREAK AREA	F-3	B-1	PR-1PT-5	N/A	N/A	PR-2PT-5	N/A
CHANGING ROOM	F-3	B-1	PR-1PT-5	N/A	N/A	PR-2PT-5	N/A
DUCT CLOSET	F-3	B-1	PR-1PT-5	N/A	N/A	PR-2PT-5	N/A

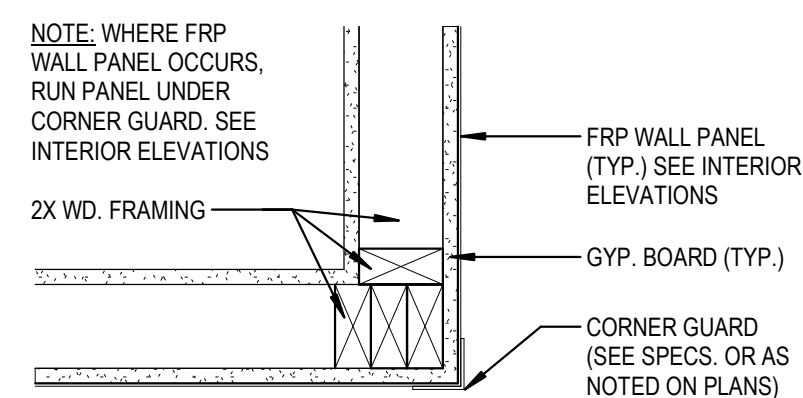
NOTES:
1. ANY MOISTURE PROBLEMS SUCH AS ROOF LEAKS, IMPROPER GRADING, ETC. MUST BE CORRECTED PRIOR TO PAINT APPLICATION.
2. CLEAN & PREPARE ALL SURFACES ACCORDING TO COATING MFG. RECOMMENDATIONS.
3. ALL GALVANIZED SURFACES SHALL BE CORROSION PROTECTED PER SPEC. RUSTED AREAS SHOULD BE PREPARED PER SSPC-SP2 OR SP3 HAND OR POWER TOOL CLEANING & PRIMED WITH PR-2 PRIOR TO APPLICATION OF SPECIFIED FINISH COATS.
4. ALL SURFACES SHALL RECEIVE (2) APPLICATIONS OF TOP COAT, APPLIED ACCORDING TO MFG. RECOMMENDATIONS.
5. ENTIRE DOOR & FRAME SHALL BE PAINTED ONE COLOR AS NOTED.
6. ALL WELDS SHALL BE GROUND SMOOTH PRIOR TO PRIME COAT.
7. ALL EXPOSED LINTELS SHALL BE PAINTED THE SAME COLOR AS THE DOOR FRAME AT MAN DOORS AND TO MATCH THE DESERT SAND METAL COLORS AT ALL OTHER EXPOSURES.

FINISH LEGEND

MARK	COLOR	FINISH	MANUFACTURER	PRODUCT
PRIMERS:				
PR-1	TINTED TO MATCH		SHERWIN WILLIAMS	HEAVY DUTY BLOCK FILLER B42W150
PR-2	TINTED TO MATCH		SHERWIN WILLIAMS	PRO-CRYL PRIMER B66-1300 SERIES
PR-3	TINTED TO MATCH		SHERWIN WILLIAMS	PREP-RITE 200 PRIMER B26W200
PAINTS:				
PT-1	SW7012 (CREAMY)	GLOSS	SHERWIN WILLIAMS	WATER BASED ALKYD URETHANE ENAMEL B53
PT-2	SW7515 (HOMESTEAD BROWN)	GLOSS	SHERWIN WILLIAMS	SHER-CRYL HPA
PT-3	CEILING WHITE	GLOSS	SHERWIN WILLIAMS	WATER BASED ALKYD URETHANE ENAMEL B53
PT-4	VALVOLINE RED	GLOSS	SHERWIN WILLIAMS	WATER BASED ALKYD URETHANE ENAMEL B53 - Color to match Pantone 485 RED
PT-5	ULTRA WHITE	GLOSS	SHERWIN WILLIAMS	WATER BASED ALKYD URETHANE ENAMEL B53
WALL PANELS:				
W-1	S-490N - LIGHT GRAY	SMOOTH	MARLITE	FRP PANEL W/ MATCHING COLOR TRIMS - CLASS C
W-2	MAUNA LOA (1295)	SATIN SANDSTONE	CRANE COMPOSITES	FRP PANEL W/ MATCHING COLOR TRIMS - CLASS C
PLASTIC LAMINATE:				
PL-1	DOVE GREY	MATTE	WILSONART	STANDARD HPL FINISH D92-60
FLOOR FINISH:				
F-1	SEE FINISH NOTE F		SILIKAL / SHERWIN WILLIAMS	SEAMLESS, RESINOUS SYSTEM - SEE FINISH NOTE F
F-2	51910 CLASSIC BLACK		ARMSTRONG	12"x12"x1/8" VCT (Wax Floor)
F-3	CLEAR	HIGH GLOSS	BASF	MASTUREKURE CC 300 SB, 3 COATS, MIN. - SEE FINISH NOTE E
BASE:				
B-1	BLACK	SMOOTH	ROPPE OR EQUAL	700 SERIES 4" RUBBER COVE BASE
B-2	SEE FINISH NOTE C		SILIKAL	SEAMLESS, RESINOUS SYSTEM
SOLID SURFACE:				
SS-1	BAJA MELANGE	#9030 ML	WILSONART	GIBALTER (WINDOW SILLS)

FINISH NOTES

A. W-1 FINISH SHALL BE MARLITE .090 PANELS. CONTACT (330) 343-6621. USE B-1 BASE w/ THIS WALL FINISH. REFER TO DTAIL 4/A-7.1
B. W-2 FINISH IS AVAILABLE THROUGH CRANE COMPOSITES. CONTACT: KEVIN BELLINGER @ (704) 904-4730. REFER TO DETAIL 5/A-7.1
C. PROVIDE STANDARD FRP TRIMS & MOLDINGS IN COLORS TO MATCH FRP FOR FINISHES W-1 & W-2. COMPLY w/ MANUFACTURERS INSTALLATION GUIDELINES USING ONLY APPROVED ADHESIVES AND SEALANTS.
D. INSIDE OF ALL VERTICAL CHASES TO BE PAINTED PT-5.
E. PROVIDE LIGHT BROOM FINISH @ CONCRETE SURFACES SCHEDULED TO RECEIVE F-3.
F. F-1 SHALL BE A SEAMLESS, RESINOUS QUARTZ FLOORING SYSTEM AS MANUFACTURED BY SILIKAL OR DUR-A-FLEX. QUARTZ FLOORING SYSTEM SHALL CONSIST OF 61 CQ SELF-LEVELING BLACK SURFACE COAT, FOLLOWED BY BROADCAST COAT (70% BLACK, 10% BLUE, 10% GREY, 10% WHITE), FOLLOWED BY TWO TOPCOATS OF R71 SEALER. INTEGRAL BASE IS INCLUDED AS PART OF THIS FLOORING SYSTEM. PROVIDE YELLOW CAUTION STRIPING AND BLUE END-OF-BAY MARKING INTEGRAL w/ FLOOR FINISH. SEE FLOOR PLAN. PAINT TO BE SHERWIN WILLIAMS, PROPARK WATERBORNE TRAFFIC PAINT - BLUE. FOR PRICING, DISTRIBUTION, AND INSTALLATION, CONTACT THE FOLLOWING:
*JOHN COCHRAN (SILIKAL) (864) 328-4572
*MATTHEW SIMPKINS (DUR-A-FLEX) (317) 690-4696
*GREG SOLTIS (RES-TEK) (404) 805-6494



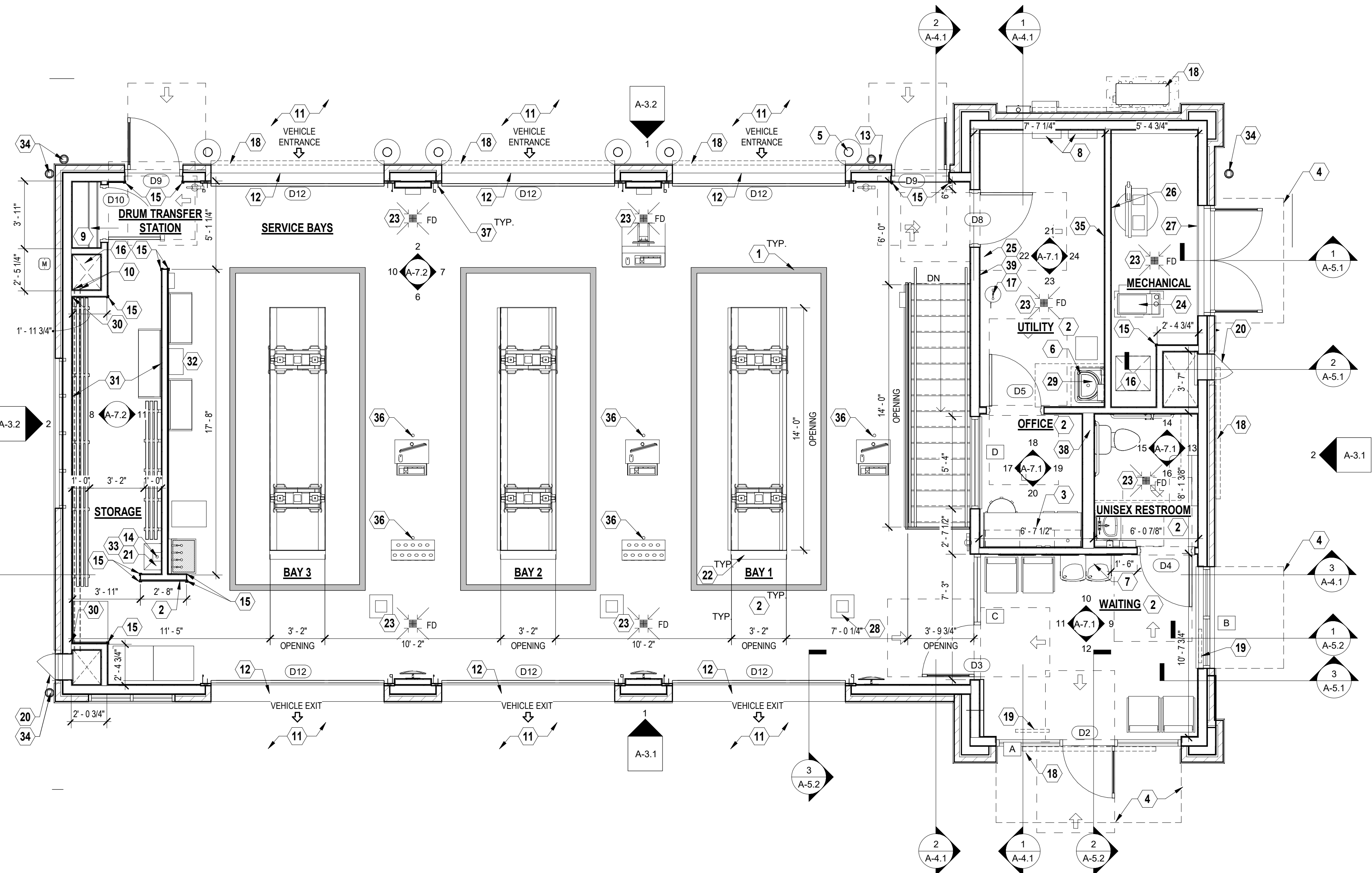
2 CORNER GUARD DETAIL
A-1.2 Scale: 1 1/2" = 1'-0"

FLOOR PLAN KEY NOTES: ○

- ① YELLOW SAFETY STRIPE INTEGRAL W/FLOOR FINISH. REFER TO FINISH NOTE "F" & PIT OPENING PLAN DETAIL 4/A-9.1.
- ② FRP FINISH THIS WALL (OR AREA). PROVIDE/INSTALL TRIM AS REQUIRED. REFER TO FINISH SCHEDULE, INTERIOR ELEVATIONS, DETAILS 4 & 5/A-7.1
- ③ PLASTIC LAMINATE COUNTERTOP AND WALL CABINETS. TOP OF FRP @ 52" A.F. REFER TO INTERIOR ELEVATIONS & DETAIL 6/A-7.1
- ④ LINE OF METAL AWNING/CANOPY ABOVE. REFER TO DETAIL 5/A-6.1.
- ⑤ PIPE BOLLARD (SEE PLANS FOR QUANTITY/LOCATION). REFER TO DETAIL 6/A-10.1.
- ⑥ SINK/LAV. REFER TO INTERIOR ELEVATIONS & PLUMBING.
- ⑦ (2) WATER FOUNTAINS (H/LO) REFER TO INTERIOR ELEVATIONS AND PLUMBING.
- ⑧ (2) ELECTRICAL PANELS. REFER TO ELECTRICAL.
- ⑨ DRUM TRANSFER SHELVING. REFER TO INTERIOR ELEVATIONS AND DETAIL 3/A-7.1.
- ⑩ ROUTE LUBE BAR LINES DOWN IN SHAFT TO TANKS IN LUBE PIT.
- ⑪ PROVIDE SEALED/ COLORED CONCRETE APRONS IN FRONT OF OVERHEAD DOORS. REFER TO CIVIL FOR EXTENT OF PAVING AND FINISH MATERIAL.
- ⑫ EXTEND FLOOR FINISH (F-1) TO OUTER EDGE OF SLAB @ BAY DOORS.
- ⑬ PROVIDE PVC SLEEVE ROUTED THROUGH CONCRETE SIDEWALK AND WALL FOR SERVICE BELL RINGER HOSE. COORDINATE REQUIREMENTS WITH VALVOLINE C.M. PRIOR TO SIDEWALK/ CURB INSTALLATION. SEE DETAIL 3/A2.1.
- ⑭ PVC PIPE ROUTED THRU PRECAST PLANK/CONC. FLOOR SLAB TO LOWER LEVEL. LIP OF PIPE TO EXTEND 1" BELOW CEILING. TOP OF PIPE TO EXTEND 10" ABOVE SLAB. PROVIDE PVC CAP. REFER TO STRUCTURAL.
- ⑮ PROVIDE 1 1/4" x 1 1/4" x 16 GA. STAINLESS STEEL CORNER GUARDS OVER FRP PANELS. GUARDS TO STOP AT TOP OF FRP. REFER TO DETAIL 2/A-1.2.
- ⑯ MECHANICAL DUCT. REFER TO MECHANICAL.
- ⑰ EYEWASH LOCATION. REFER TO PLUMBING.
- ⑱ LOCATION OF SIGNAGE ABOVE. REFER TO EXTERIOR ELEVATIONS AND SIGN SCHEDULE.
- ⑲ *OPEN* SIGNAGE. REFER TO EXTERIOR ELEVATIONS, SIGN SCHEDULE, AND ELECTRICAL.
- ⑳ EXTERIOR ACCESS DOOR. REFER TO EXTERIOR ELEVATIONS & DOOR SCHEDULE.
- ㉑ ANTI-FREEZE FUNNEL BY G.C. MOUNTED ON WALL ABOVE PVC CHASE @ 30" AFF REFER TO DETAIL 8/A-7.1.
- ㉒ ROYAL BLUE STRIPE INTEGRAL WITH FLOOR FINISH. REFER TO FINISH NOTE "F" & PIT OPENING PLAN DETAIL 4/A-9.1.
- ㉓ SLOPE CONCRETE TOPPING APPROXIMATELY 30" @ AROUND FLOOR DRAIN (TYP.).
- ㉔ LOCATION OF MECHANICAL EQUIPMENT. REFER TO MECHANICAL.
- ㉕ AIR PRESSURE SHUT OFF VALVE LOCATION FOR AIR COMPRESSOR.
- ㉖ AUTO AIR DRYER. REFER TO OPERATIONS EQUIPMENT PLAN G-3.1. (COORDINATE LOCATION IN MECHANICAL ROOM WITH VIOC C.M.)
- ㉗ SMOKE DETECTOR. (COORDINATE LOCATION IN MECHANICAL ROOM WITH VIOC C.M.)
- ㉘ BLUE GUIDE SQUARE ON FLOOR - INTEGRAL WITH FLOOR FINISH. REFER TO FINISH NOTE "F" & PIT OPENING PLAN DETAIL 1/A-9.1.
- ㉙ WATER HEATER ON SHELF ABOVE. REFER TO PLUMBING AND DETAIL 2/A-7.1.
- ㉚ STOP POINT FOR FRP WALL FINISH.
- ㉛ NO FRP WALL FINISH IN THIS LOCATION.
- ㉜ AIRLINE PEDESTAL (BY OWNER).
- ⑳ ANTI-FREEZE WASTE SINK. REFER TO DETAIL 8/A-7.1.
- ㉞ ALUMINUM DOWNSPOUT. REFER TO EXTERIOR ELEVATIONS AND ROOF PLAN.
- ㉟ 3'-0" x 4'-0" x 3/4" PLYWOOD TELEPHONE BOARD. PAINT PT-1 (BY G.C.).
- ㊱ 2" Ø HOLE TO BE CORE DRILLED THRU PRECAST PLANK FLOOR (BY VENDOR). G.C. TO COORDINATE LOCATIONS WITH VIOC C.M.
- ㊲ FURNISH AND INSTALL VESTIL OVERHEAD TRACK PROTECTOR - 24 1/4" HIGH =, MODEL #DSP-24 FROM NORTHERN TOOL + EQUIPMENT. SECURELY MOUNT TO FLOOR (EACH SIDE OF DOOR) TO COVER/ PROTECT VITECTOR ELECTRONIC EYES AND LIFTTECH EQUIPMENT WITHOUT BLOCKING SIGHT LINE.
- ㊳ USE 2x8 WOOD STUDS AT PLUMBING WALL.
- ㊴ USE 2x6 WOOD STUDS AT STAIR WALL.

GENERAL NOTES

- A. INTERIOR WALLS SURROUNDING RESTROOMS AND OFFICE SHALL BE PROVIDED w/ SOUND BATT INSULATION TO EXTEND FULL HEIGHT TO TRUSSES OR JOIST SPACE TO ACHIEVE VIOC ACCEPTABLE SOUND ENCLOSURE. VAPOR BARRIER IS NOT REQUIRED IN THESE WALLS. EXTERIOR WALLS PER R-VALUES REQUIRED, REFER TO SHEET A-4.1.
 - B. ALL EXTERIOR WALLS & AREAS ABOVE CEILINGS (JOIST & TRUSS SPACES) SHALL BE PROVIDED WITH BATT INSULATION TO ACHIEVE A COMPLETELY INSULATED THERMAL ENVELOPE AS REQUIRED. PROVIDE VAPOR BARRIER PER LOCAL CLIMATE REQUIREMENTS. BLOW-IN INSULATION IS UNACCEPTABLE.
 - C. ALL GYPSUM BOARD IN SERVICE BAYS AND STORAGE AREA SHALL BE 5/8" HIGH ABUSE FIRE SHIELD BY NATIONAL GYPSUM.
 - D. ALL WALLS EXTENDING TO UNDERSIDE OF TRUSSES SHALL BE BRACED TO STRUCTURE AS REQUIRED. PROVIDE NECESSARY BLOCKING FOR STABLE, SECURE INSTALLATION.
 - E. REFER TO SHEET G-3.1 FOR EQUIPMENT SCHEDULES AND LOCATIONS.
 - F. DIMENSIONS FOR INTERIOR WALLS ON PLANS ARE TO ROUGH FRAMING (U.N.O.) EXTERIOR DIMENSIONS ARE TO FINISHED SURFACES AND OPENINGS.
 - G. REFER TO STRUCTURAL FOR FLOOR PENETRATION LOCATIONS
 - H. POLYETHYLENE VAPOR BARRIER TO BE USED ON WALL/ CEILING APPLICATIONS WHERE UNFACED BATT INSULATION IS USED.
- KEY TO WALL TYPES**
- ══ EXTERIOR WALL: EXTERIOR FINISH, OVER AIR/MOISTURE BARRIER, OVER PLYWOOD SHEATHING (PER STRUCTURAL), OVER 2x6 WALL STUDS (TYPE & SPACING PER STRUCTURAL). PROVIDE 5/8" HIGH ABUSE GYPSUM WALL BOARD ON INTERIOR FACE OVER POLYETHYLENE VAPOR BARRIER. INSULATE STUD CAVITY WITH BATT INSULATION.
 - ══ INTERIOR WALL: 2x4 STUDS @ 16" O.C. (U.N.O.) OR 2x6, 2x8 WHERE NOTED ON PLANS, w/ P.T. SILL PLATE AND DOUBLE TOP PLATES w/ 5/8" GYPSUM BOARD EACH SIDE. EXTEND WALL AND SECURE TO STRUCTURE. INSULATE STUD CAVITY WITH SOUND BATTS WHERE NOTED.
- NOTE: REFER TO STRUCTURAL DRAWINGS FOR ADDITIONAL INFORMATION.



1 FLOOR PLAN - UPPER LEVEL
A-1.2 Scale: 1/4" = 1'-0"

CESO
3001 Rigby Road, Suite 300
Miamisburg, OH 45342
Phone: 937.435.8984 Fax: 938.208.4626

Date: _____

Revisions/Submissions

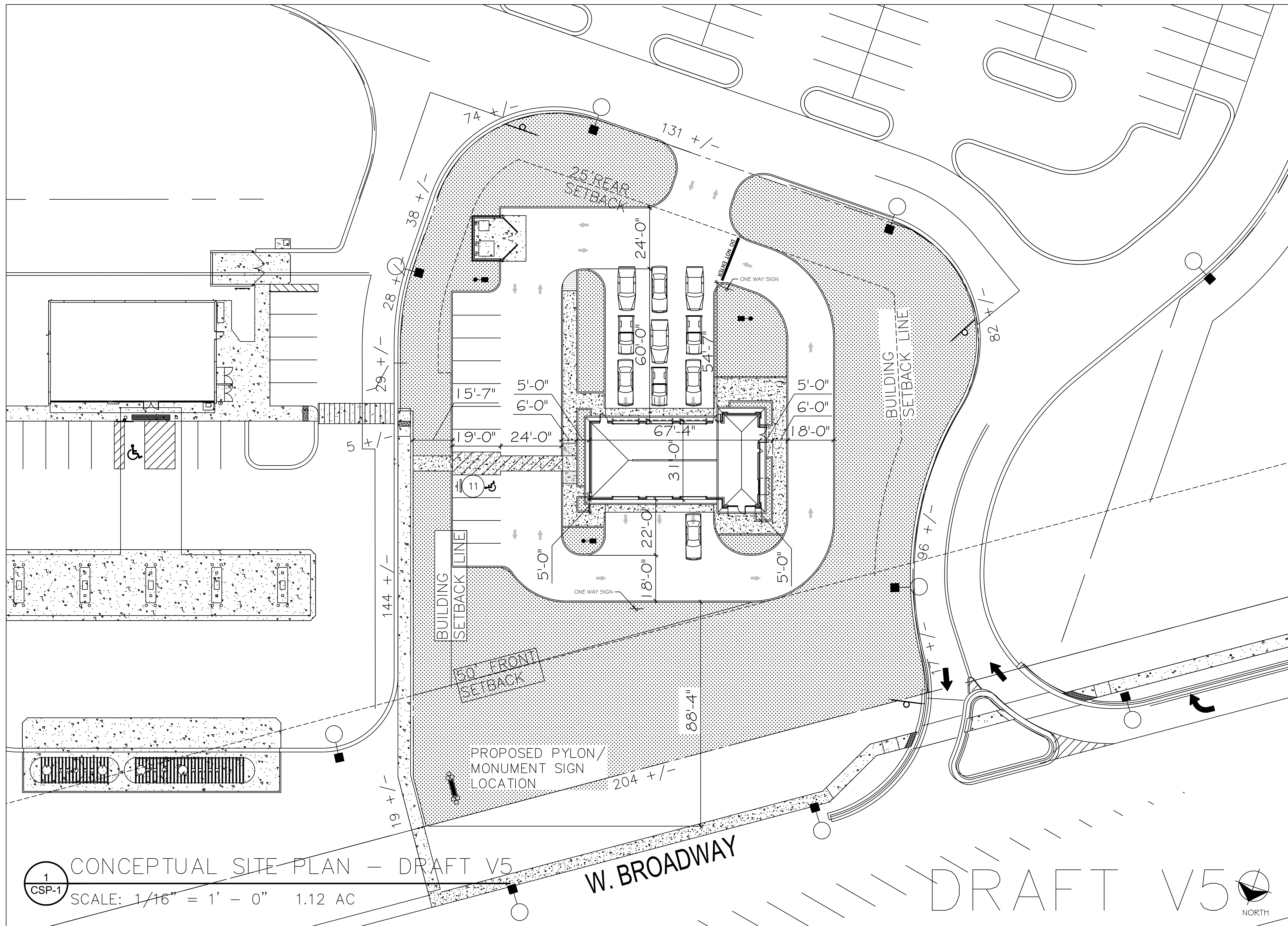
No.	Rev.

© 2021 CESO, INC

Project number: 759983-01
Scale: As indicated
Drawn: RLD
Checked: XXX
Date: 2021.12.21
Issue: CD
Drawing Title: FLOOR PLAN - UPPER LEVEL

VALVOLINE INSTANT OIL CHANGE
PENDLETON PIKE MCCORDSVILLE, IN 46055

A-1.2



1
CSP-1

CONCEPTUAL SITE PLAN — DRAFT V5

SCALE: 1/16" = 1' - 0" 1.12 AC

W. BROADWAY

DRAFT V5



NORTH