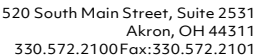
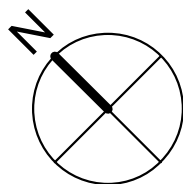


CAUTION: IF THIS SHEET IS NOT 22"x34" IT IS A REDUCED PRINT



CONTRACT DATE:	02.14.22
BUILDING TYPE:	END. 80FT
PLAN VERSION:	06/30/2022
BRAND DESIGNER:	DICKSON
SITE NUMBER:	317219
STORE NUMBER:	463810
PA/PM:	SM
DRAWN BY.:	RS
JOB NO.:	2024088.00



A

FURNITURE PACKAGE - BY FURNITURE VENDOR U.O.N.

ARTWORK SCHEDULE

1. REFER TO SC SHEETS FOR SCOPE OF WORK RESPONSIBILITY

2. (HC)- SYMBOL DENOTES A HANDICAP ACCESSIBLE TABLE

GENERAL NOTES

SHELVING QUANTITIES **C2**

XXX

KEY NOTES

5857 West Broadway
McCordsville, Hancock, IN
46055



A2.0

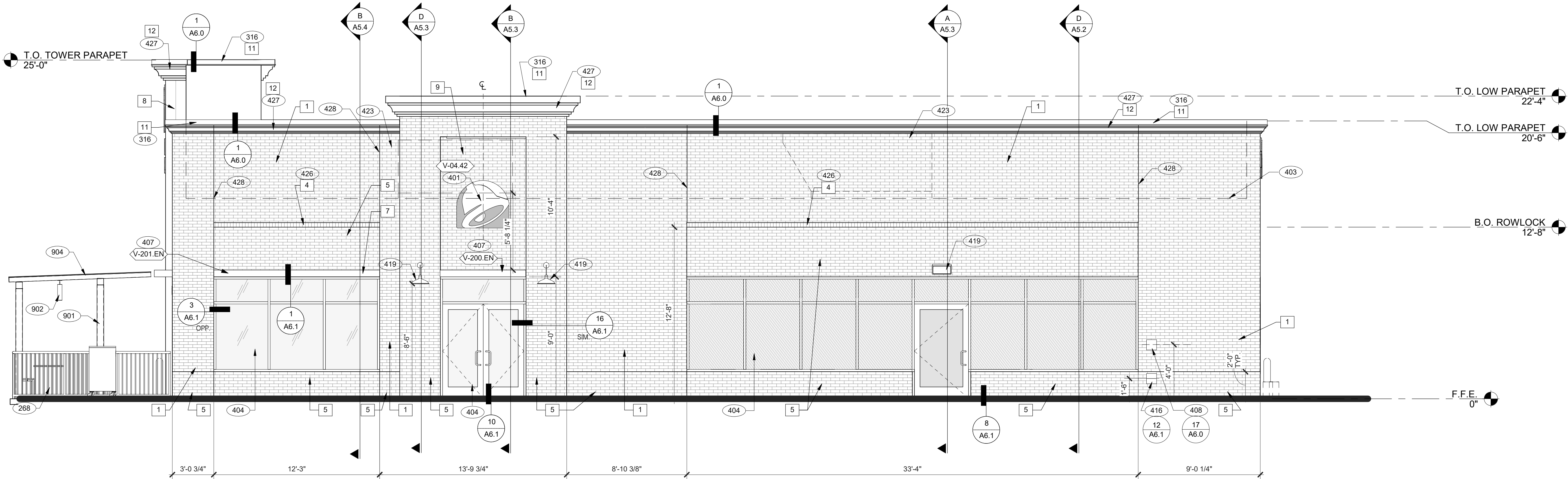
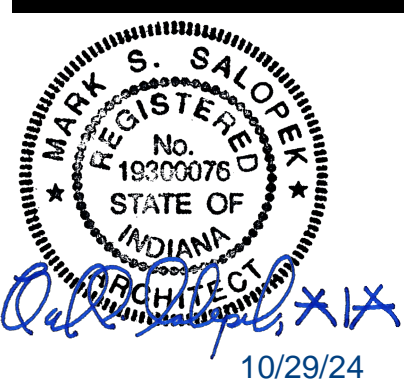
PLOT DATE: 10/1/2024 11:27:27 AM

“This submittal is for general informational purposes only and is preliminary in nature. As such, any other use or reliance is strictly prohibited.”

CAUTION: IF THIS SHEET IS NOT 22"x34" IT IS A REDUCED PRINT



520 South Main Street, Suite 2531
Akron, OH 44311
330.572.2100 Fax: 330.572.2101



RIGHT ENTRANCE ELEVATION 1/4" = 1'-0" 1

TYPE MARK	QTY	ITEM DESCRIPTION	LOC
TOWER			
V-09.14W	2	14" WHITE CHANNEL LETTERS VERTICAL	A4.1
V-04.42	2	42" SWINGING BELL PURPLE LOGO FACE LIT	A4.1
SIDE ENTRY			
V-04.42	1	42" SWINGING BELL PURPLE LOGO FACE LIT	A4.0
V-200.EN	1	SIDE ENTRY AWNING 6'3" L X 6'6" H X 3'0" D, BLACK	A4.0
DRIVE THRU			
V-101.DT	1	DT AWNING (OVER DT) 9'0" L X 6'6" H X 4'0" D, BLACK	A4.1
V-1X1.DT	1	DT AWNING (OVER DT) 5'0" L X 6'6" H X 4'0" D, BLACK	A4.1
V-09.14W	1	14" WHITE CHANNEL LETTERS VERTICAL	A4.1
V-04.36	1	36" SWINGING BELL PURPLE LOGO FACE LIT	A4.1
EYEBROW AWNINGS			
V-201.EN	1	SIDE ENTRY EYEBROW (WINDOW) 12'2" L X 6'6" H X 1'4" D, BLACK	A4.0
V-202.EN	1	FRONT EYEBROW (WINDOW) 16'9" L X 6'6" H X 1'4" D, BLACK	A4.1
V-203.EN	1	DT EYEBROW (WINDOW) 7'8" L X 6'6" H X 1'4" D, BLACK	A4.1

- MISCELLANEOUS**
- A. SEE SHEET A1.1 'WINDOW TYPES' FOR WINDOW ELEVATIONS.
- SEALERS (REFER TO SPECS)**
- A. SEALANT AT ALL WALL AND ROOF PENETRATIONS.
- B. SEALANT AT ALL WINDOW AND DOOR FRAMES AND JAMB. DO NOT SEAL SILL @ WINDOWS.
- C. APPLY NEOPRENE GASKET (CONT.) BETWEEN BUILDING AND CANOPY.

CRITICAL DIMENSIONS

A. REQUIRED CLEAR OPENING WIDTH TO ENSURE COORDINATION WITH STANDARD SIGNAGE/BUILDING ELEMENTS DIMENSIONS.

NOTE: NO EXTERIOR SIGNS ARE WITHIN THE SCOPE OF WORK COVERED BY THE BUILDING PERMIT APPLICATION. THE GENERAL CONTRACTOR SHALL BE RESPONSIBLE FOR COORDINATING THE INSTALLATION OF ALL EXTERIOR SIGNS AND INSTALLATION OF REQUIRED BLOCKING AND ELECTRICAL CONNECTIONS FOR FINAL APPROVED SIGNS.

PAINTING

APPLICATOR MUST DO THEIR DUE DILIGENCE WITH PREPARATION.

PRIMER: 1 COAT SW A24W8300

FINISH: 2 COATS SW A82-100 SERIES, MATCH COLORS FROM MATERIAL SCHEDULE.

A-100 EXTERIOR LATEX SATIN.

SIGNAGE

F

GENERAL NOTES

E

PAINT NOTES

A

SYMBOL	ITEM/MATERIAL	MANUFACTURER	MATERIAL SPEC	COLOR	CONTACT INFORMATION
1	BRICK	INTERSTATE BRICK	3 5/8" X 2 1/4" X 7 5/8" SHAPE: FACE BRICK, MODULAR	BRICK: -COLOR = PEWTER / ASH, (50/50) RANDOMIZED -TEXTURE = MATTE -GROUT = GREY	
2	SCUPPERS	-	-	WORLDLY GRAY (SW7043), SEMI-GLOSS	
3	DOWN SPOUTS	-	-	WORLDLY GRAY (SW7043), SEMI-GLOSS	
4	BRICK ROWLOCK	INTERSTATE BRICK	3 5/8" X 2 1/4" X 7 5/8" SHAPE: FACE BRICK, MODULAR	BRICK: -COLOR = PEWTER -TEXTURE = SCRATCH -GROUT = GREY	
5	BRICK ACCENT	INTERSTATE BRICK	3 5/8" X 2 1/4" X 7 5/8" SHAPE: FACE BRICK, MODULAR	BRICK: -COLOR = PEWTER -TEXTURE = SCRATCH -GROUT = GREY	
6	HOLLOW METAL DOOR	-	-	SW PURPLE TB2603C, SEMI-GLOSS	
7	AWNINGS	SIGNAGE VENDOR	-	BLACK BY THE SIGNAGE VENDOR	
8	CORNER TOWER	INTERSTATE BRICK	3 5/8" X 2 1/4" X 7 5/8" SHAPE: FACE BRICK, MODULAR	BRICK: -COLOR = PLATINUM -TEXTURE = SCRATCH -GROUT = GREY	
9	BRICK RECESS OF SIDE ENTRY PORTAL	INTERSTATE BRICK	3 5/8" X 2 1/4" X 7 5/8" SHAPE: FACE BRICK, MODULAR	BRICK: -COLOR = PLATINUM -TEXTURE = SCRATCH -GROUT = GREY	
10	HARDIE REVEAL PANEL	JAMES HARDIE	REVEAL PANEL SYSTEM	SW PURPLE TB2603C, SEMI-GLOSS	SEE C / A 7.2
11	METAL PARAPET CAP	-	24GA GALVANIZED	CYBERSPACE (SW7076) KYNAR 500 COATING	
12	CORNICE	-	FIBERGLASS	WORLDLY GRAY (SW7043), SEMI-GLOSS	

EXTERIOR FINISH SCHEDULE

D

KEY NOTES

B

DATE	REMARKS

CONTRACT DATE: 02.14.22

BUILDING TYPE: END. 80FT

PLAN VERSION: 06/30/2022

BRAND DESIGNER: DICKSON

SITE NUMBER: 317219

STORE NUMBER: 463810

PA/PM: SM

DRAWN BY.: RS

JOB NO.: 2024088.09

TACO BELL

5857 West Broadway
McCordsville, Hancock, IN
46055



ENDEAVOR 2.0
EXTERIOR
ELEVATIONS

A4.0

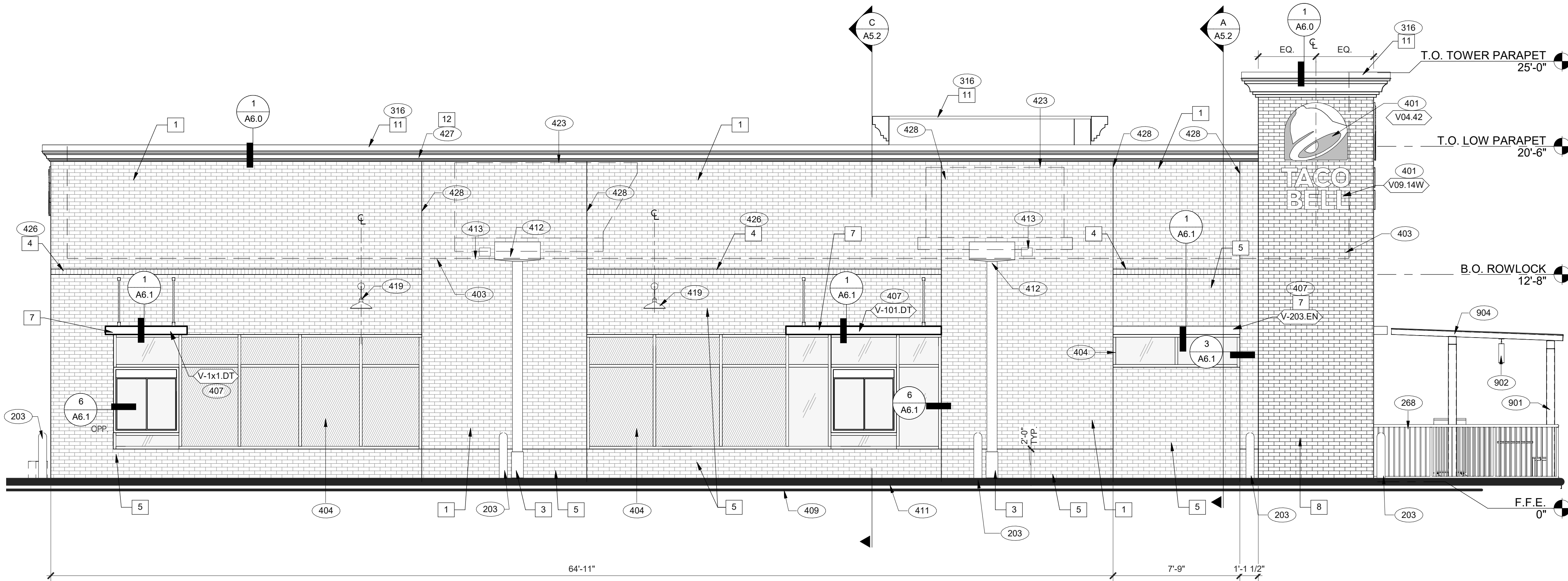
PLOT DATE: 10/1/2024 11:27:29 AM

"This submittal is for general informational purposes only and is preliminary in nature. As such, any other use or reliance is strictly prohibited."

CAUTION: IF THIS SHEET IS NOT 22"x34" IT IS A REDUCED PRINT



520 South Main Street, Suite 2531
Akron, OH 44311
330.572.2100 Fax 330.572.2101



SEE SHEET A4.0 FOR FINISH SCHEDULE

- 203 PIPE BOLLARD. SEE CIVIL DRAWINGS.
268 BLACK PATIO RAILING, BY G.C. 250
316 METAL PARAPET CAP.
401 BUILDING SIGN BY VENDOR. REQUIRES ELECTRICAL, SEE ELECTRICAL PLANS.
403 DASHED LINE INDICATES ROOF BEYOND.
404 STOREFRONT, TYPICAL. SEE SHEET A1.1.
407 METAL CANOPIES BY VENDOR. REQUIRES ELECTRICAL, SEE ELECTRICAL PLANS.
409 ASSUME D/T LANE SURFACE IS 6" BELOW THE FINISH FLOOR. REFER TO GRADING & SITE PLAN.
411 CONCRETE CURB.
412 SCUPPER, COLLECTOR AND VERTICAL DOWNSPOUT 6" MIN. REFER TO D/A3.0.
413 OVERFLOW SCUPPER. REFER TO D/A3.0.
418 GAS METER.
419 EXTERIOR LIGHT FIXTURE. SEE ELECTRICAL DRAWINGS.
423 OUTLINE OF RTU BEYOND.
426 BRICK ROWLOCK, PROJECT 1/2".
427 FYPN CORNICE OR EQUAL.
428 BRICK EXPANSION JOINT.
901 PATIO COLUMNS. COLOR TO MATCH METAL AWNINGS IN BLACK. SEE STRUCTURAL DRAWINGS.
902 EXTERIOR LIGHTS. REFER TO ELECTRICAL LIGHTING PLANS.
904 PATIO CANOPY, COLOR TO MATCH METAL AWNINGS IN BLACK. PROVIDED AND INSTALLED BY G.C. SEE SHEET A9.0 FOR DETAILS.



LEFT ELEVATION 1/4" = 1'-0" 1

KEY NOTES

A

DATE	REMARKS

CONTRACT DATE: 02.14.22
BUILDING TYPE: END. 80FT
PLAN VERSION: 06/30/2022
BRAND DESIGNER: DICKSON
SITE NUMBER: 317219
STORE NUMBER: 463810
PA/PM: SM
DRAWN BY.: RS
JOB NO.: 2024088.09

TACO BELL

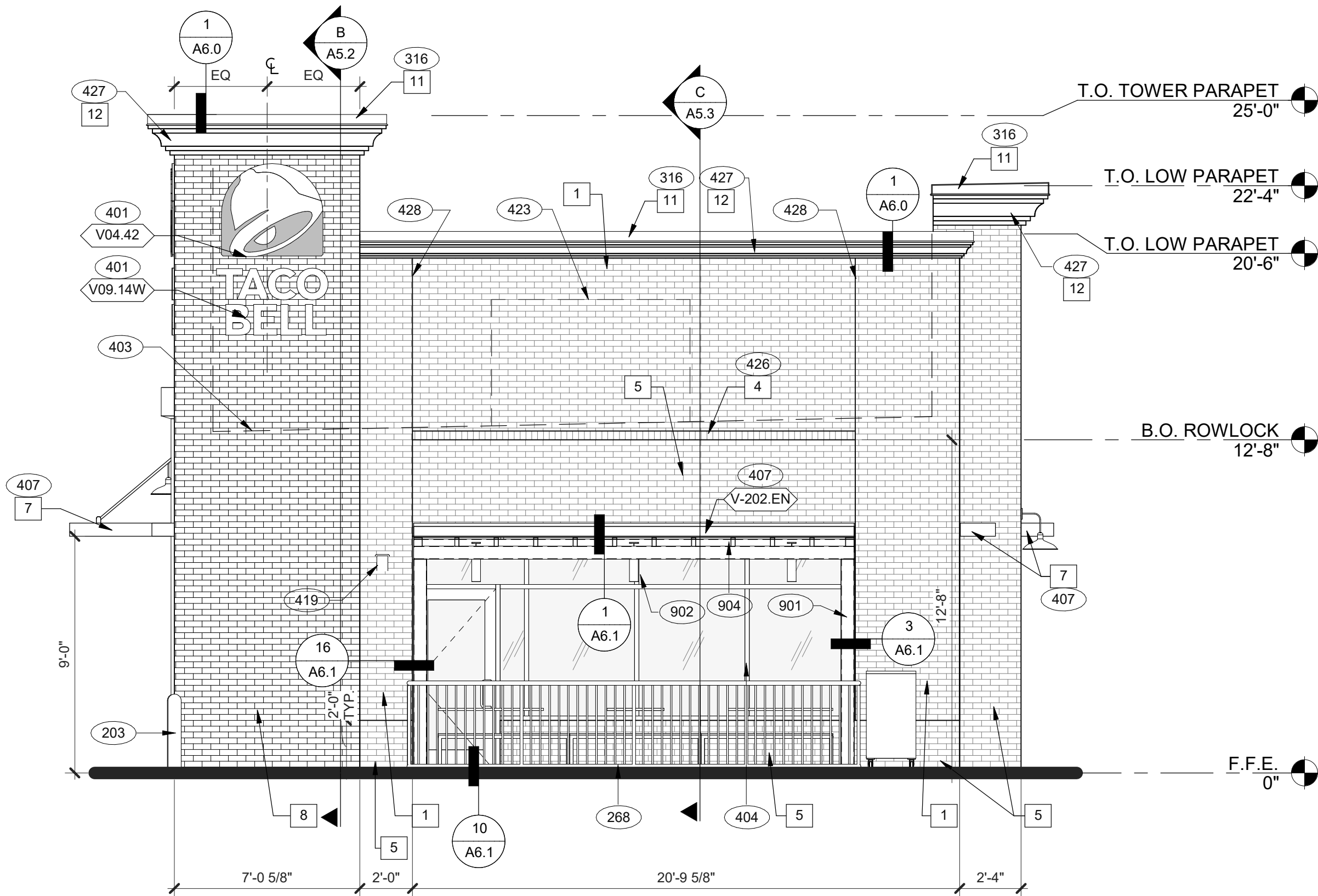
5857 West Broadway
McCordsville, Hancock, IN
46055



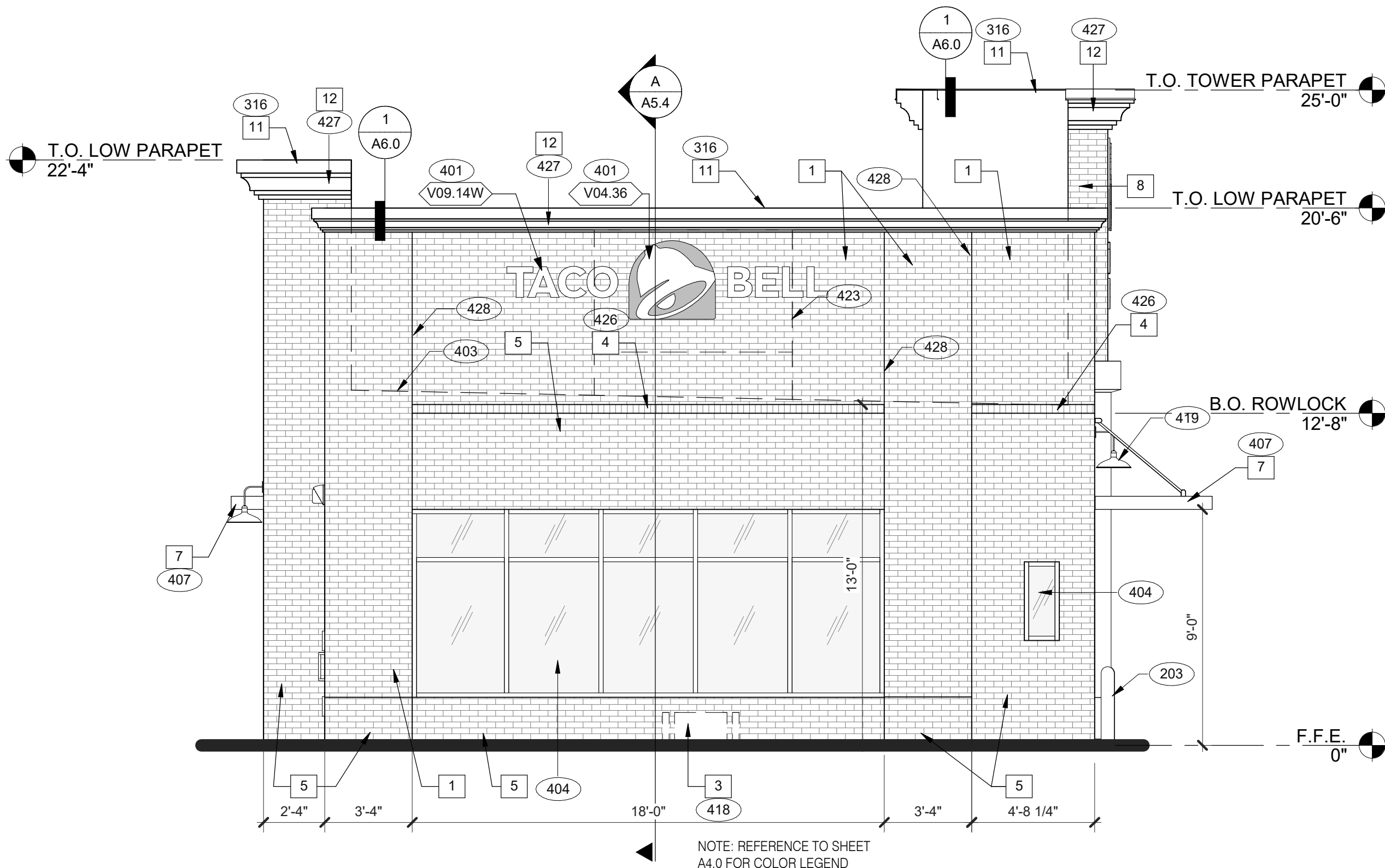
ENDEAVOR 2.0
EXTERIOR
ELEVATIONS

A4.1

PLOT DATE: 10/1/2024 11:27:32 AM



FRONT ELEVATION 1/4" = 1'-0" 2



REAR ELEVATION 1/4" = 1'-0" 3