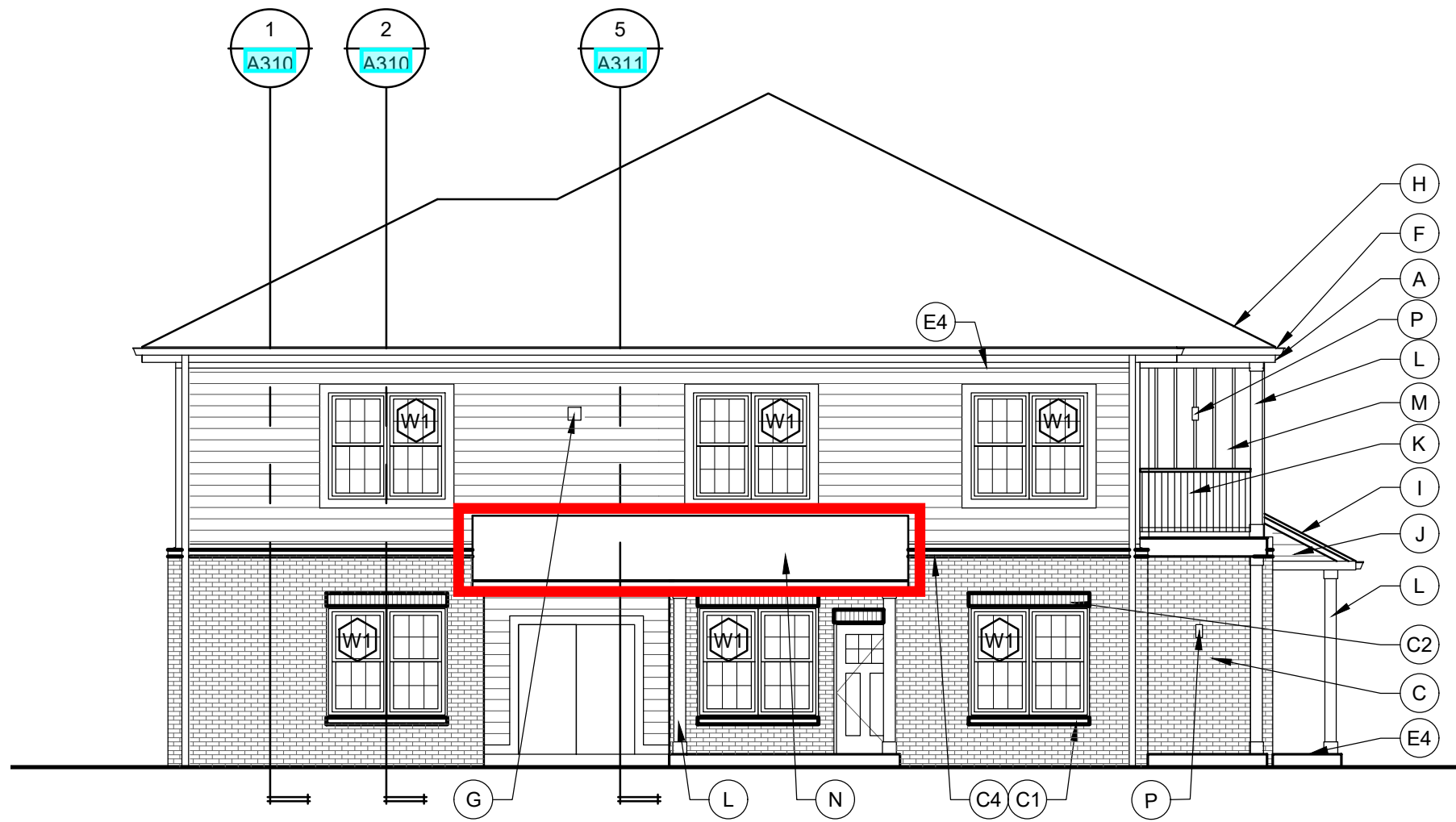


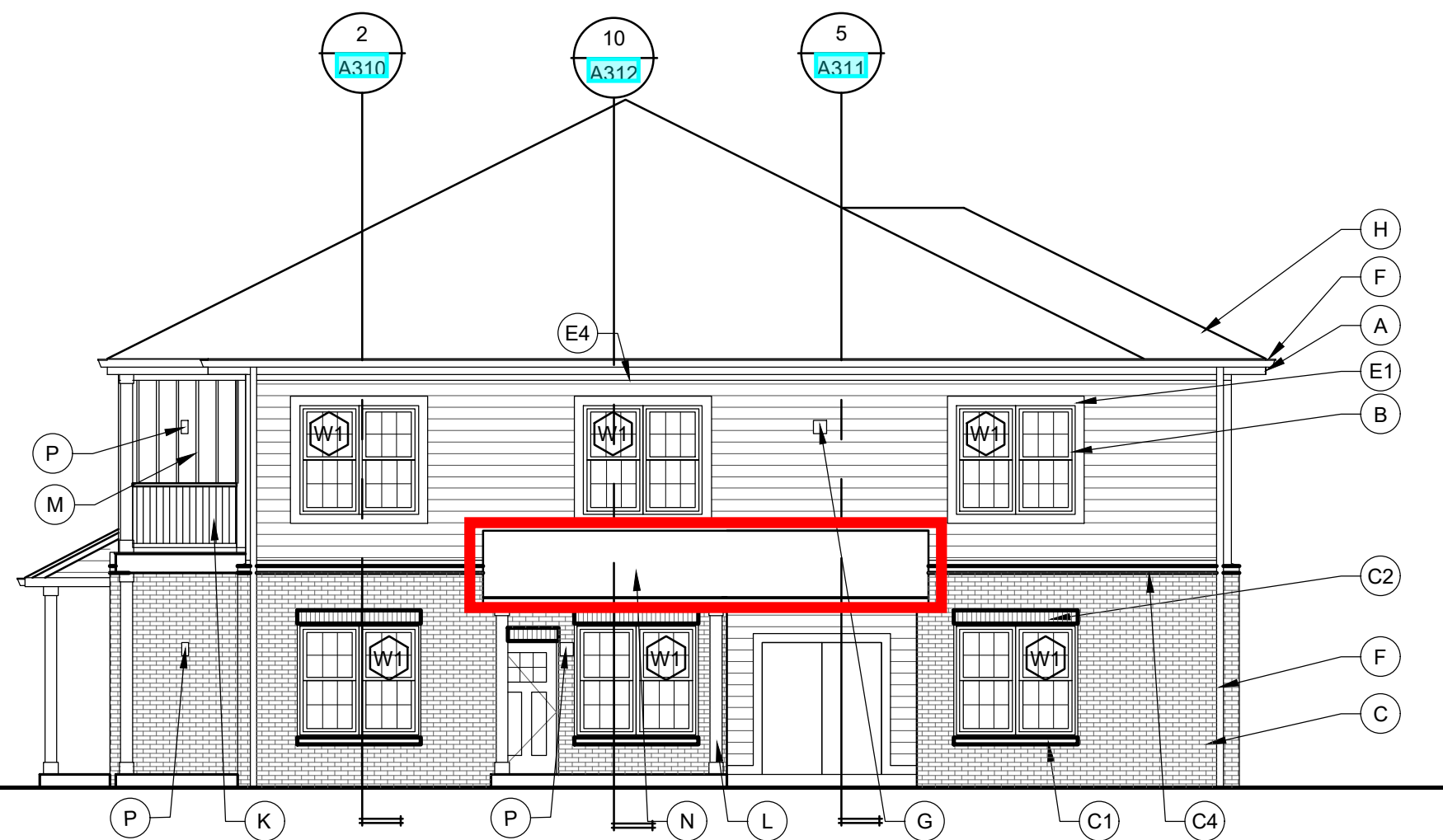
5 ELEVATION - TYPE B - SIDE - BUILDING 2

Scale: 1/8" = 1' - 0"



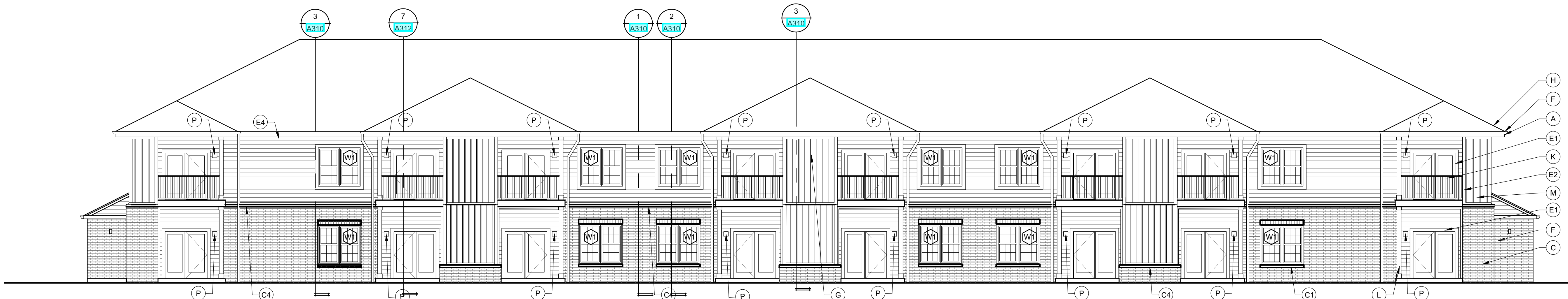
4 ELEVATION - TYPE B - SIDE

Scale: 1/8" = 1' - 0"



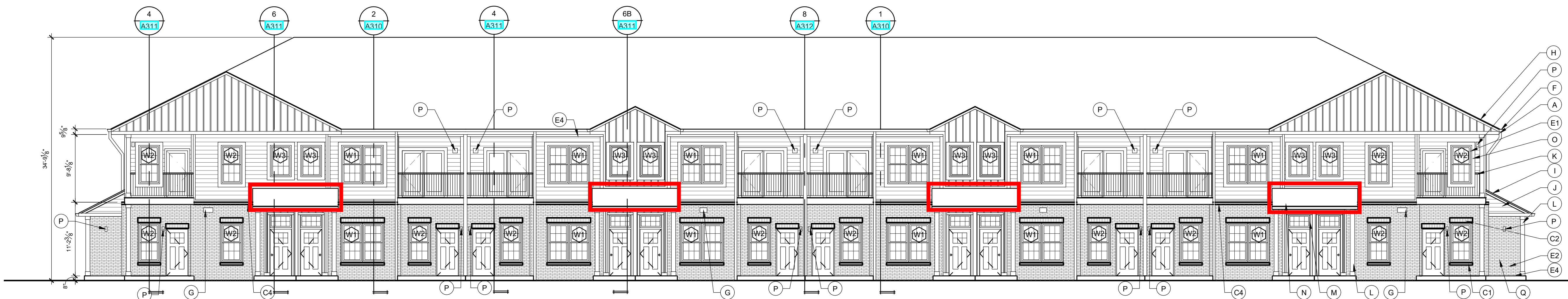
3 ELEVATION - TYPE B - SIDE

Scale: 1/8" = 1' - 0"



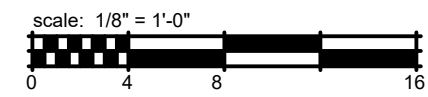
2 ELEVATION - TYPE B - REAR OVERALL

Scale: 1/8" = 1' - 0"



1 ELEVATION - TYPE B - FRONT OVERALL

Scale: 1/8" = 1' - 0"



GENERAL ELEVATION NOTES

- FOUNDATION SHOWN FOR REFERENCES ONLY. SEE STRUCTURAL.
- SEAL ALL PENETRATION WITH SEALANT TO MATCH ADJACENT MATERIALS.
- SEE ROOF PLANS FOR ROOF SLOPE, DOWNSPOUT, GUTTER AND ROOF VENT INFORMATION.
- ALL SIDING AND TRIM TO BE INSTALLED PER MANUFACTURER'S INSTRUCTIONS. TOUCH UP PAINT AND PRIMER AT ALL CUTS WHERE COMPOSITE WOOD FIBERS ARE EXPOSED.
- REVIEW ALL PENETRATIONS THROUGH SHEARWALL WITH STRUCTURAL. ANY PENETRATION NOT IN APPROVED ZONES SHOULD BE BROUGHT TO THE ATTENTION OF THE STRUCTURAL ENGINEER IMMEDIATELY.
- PROVIDE FLASHING CUT INTO BRICK WHERE ROOF OR CANOPY TERMINATES INTO BRICK WALL. PROVIDE 1 FULL COURSE VERTICAL COVERAGE, MIN.
- PAIN'T ALL EXPOSED METAL THAT IS NOT SPECIFIED OR INDICATED TO RECEIVE A FACTORY FINISH.
- PAIN'T ALL DRYER AND EXHAUST VENTS TO MATCH SIDING. SEE A500 SERIES FOR DRYER VENT DETAILS.
- REFER TO DOOR AND WINDOW SCHEDULES FOR TYPES AND SIZES. SEE A600 SERIES.
- ALL TRIM TO BE 5/4" UNLESS OTHERWISE NOTED.
- SIDEWALKS AT BUILDING AND STRUCTURES ON AN ACCESSIBLE ROUTE TO BE FLUSH WITH FINISH FLOOR AT DOORS AND MUST SLOPE AWAY IN ACCORDANCE WITH ADA STANDARDS.
- ALL EXPOSED FLASHING TO BE FACTORY FINISHED BY MANUFACTURER / SUPPLIER OR MATERIAL WHICH IS BEING FLASHED.
- ARCHITECTURAL FINISH FLOOR ELEVATION OF 0'-0" IS EQUAL TO THE HIGHEST GROUND FLOOR ELEVATION AT EACH BUILDING LISTED ON THE CIVIL FINISH FLOOR ELEVATIONS. SEE CIVIL DRAWINGS.
- ALL SOFFITS TO BE PAINTED TO MATCH THE FRONT FACE OF THE WALL THAT IT DIES INTO ABOVE IT.
- PAINT LOOSE LINTELS AT THE BRICK TO MATCH ADJACENT BRICK COLOR.
- ALL BALCONIES FRAMED WITH PRESSURE TREATED LUMBER EXPOSED FROM BELOW WITHOUT PAINTED FINISH.
- SEE A600 SERIES FOR TYPICAL EXTERIOR DETAILS, FLASHING CONDITIONS, WALL PENETRATIONS, TRANSITION DETAILS, AND AIR & WATER BARRIER SYSTEM RECOMMENDED INSTALLATION DETAILS.
- END LIST

ELEVATION KEYED NOTES

- 5/4" X 10" FASCIA BOARD WITH GUTTER. COLOR GUTTER AND FASCIA WHITE. SEE SPECIFICATIONS FOR MATERIAL AND PROFILE.
 - VINYL WINDOW, BLACK, TYPICAL.
 - BRICK (WEEPS AT TOP AND BOTTOM OF WALL.) COLOR: DARK BLACK / GRAY SIMILAR TO TERRE HAUTE DOMINO.
 - SLOPED PRECAST SILL UNDER WINDOW. ARCHITECT TO CHOOSE FROM SUPPLIERS STANDARD PROFILES. COLOR TO MATCH BRICK.
 - SOLDIER COURSE OVER WINDOWS AND DOORS WITH PAINTED STEEL LINTEL AND VERTICAL WAFFER WEEPS. COLOR TO MATCH BRICK.
 - 4" PRECAST BAND, OVERHANG BRICK 1" WITH INTEGRAL DRIP EDGE. ARCHITECT TO SELECT FROM SUPPLIERS TYPICAL PROFILES.
 - 8" PRECAST BAND, OVERHANG BRICK 1" WITH INTEGRAL DRIP EDGE. SOLDIER COURSE AT TOP OF WALL.
 - ELECTRIC METER BANK. TRIM OUT AREA FOR METERS AND FINISH WITH FLAT SIDING PANELS. PAINT TO MATCH ADJACENT BRICK.
 - 5/4" TRIM BOARD. COLOR: HARDIE COBBLE STONE.
 - X6" WIDE TRIM AROUND WINDOWS AND DOORS.
 - X6" WIDE TRIM AT INSIDE & OUTSIDE CORNERS.
 - X6" HORIZONTAL BASE TRIM ABOVE BRICK.
 - X6" HORIZONTAL BAND BELOW OVERHANG / SOFFIT. SEE DETAILS.
 - X6" TRIM ABOVE PATIO SLAB.
 - GUTTERS & DOWNSPOUTS ON ELEVATIONS. MATCH ADJACENT COPING / SIDING COLOR. TIE INTO STORM SYSTEM. SEE CIVIL PLANS. ARCHITECT TO SELECT FROM SUPPLIERS TYPICAL PROFILES.
 - PAINT EXPOSED PVC TO MATCH DOWNSPOUTS. COLOR TO BE SELECTED FROM SAMPLES.
 - LIGHTING WALL PACK. SEE ADDITIONAL NOTES ON THE LIGHTING FIXTURES SCHEDULE. FULL CUT-OFF FIXTURES PER CITY REQUIREMENTS.
 - ASPHALT ARCHITECTURAL SHINGLE ROOF, "30 YEAR WARRANTY" ON SYNTHETIC UNDERLAYMENT AND 5/8" OSB DECKING ON PRE-ENGINEERED WOOD TRUSSES. ROOF SLOPE 6/12, TYPICAL. COLOR DARK GRAY ARCHITECTURAL. SUBMIT COLORS FOR APPROVAL.
 - EDGE OF ROOF WITH DRIP EDGE AND 5/4 X 6" TRIM, TYPICAL.
 - SMOOTH SIDING PANEL AT GABLE, TYPICAL.
 - ALUMINUM RAILING TYPICAL. SEE ADDITIONAL NOTES ON BALCONY FRAMING PLANS. NO RAILINGS REQUIRED ON GROUND FLOOR AT BALCONIES. COLOR BLACK.
 - COMPOSITE POST, 8X8 REAL POST - SMOOTH, PAINT HIGH GLOSS MATCH CANOPY NOTE 1P. WRAP TOP OF COLUMN WITH 5/4X6" TRIM AND BOTTOM WITH 5/4X6" TRIM. PAINT COLOR: TO MATCH HARDIE IRON GRAY.
 - BOARD & BATTEN FIBER CEMENT SIDING. COLOR: ARTIC WHITE.
 - SEE NOTE "H".
 - LAP SIDING, FIBER CEMENT, 7" EXPOSURE. COLOR: DEEP OCEAN.
 - PATIO WALL SCIENCE. SEE LIGHTING SCHEDULE. FULL CUT-OFF "NIGHT SKY" COMPLIANT PER CITY COMMENTS.
 - THIS UTILITY CLOSET VARIES FROM OTHER BUILDINGS. CITY REQUIRES ADDITIONAL BRICK IN LIEU OF LAP SIDING. SEE FLOOR PLAN. APPLIES TO ALL SIDES. SLAB EDGE PLAN AT TYPE B, BUILDING #2, TYPE A, BUILDING #5 & 8.
- CLUBHOUSE ONLY
- GLASS GARAGE DOOR TESTED IN ACCORDANCE WITH ANSI DASHA 105, REQUIRED PER COMM CHECK.
 - ALUMINUM STOREFRONT. DARK BRONZE ANODIZED. SEE A630 SERIES FOR MORE INFORMATION. PROVIDE SAMPLES FOR COMPARISON WITH THE TIMELY FAUX STOREFRONT FOR CONSISTENCY.
 - METAL COPING. COLOR TO MATCH RENDERINGS. SEE SECTIONS FOR ADDITIONAL INFORMATION.
 - COPING OVER BRICK AT OPENING. SLOPE TO DRAIN. PROVIDE 1" DRIP EDGE AND HEMMED EDGE. TURN UP WALL AND SET IN MORTAR JOINT.
 - DECORATIVE CHANDELIER, NOT SHOWN. SEE INTERIORS AND ELECTRICAL PLANS.
 - STEEL LINTEL ABOVE OPENINGS, TYPICAL. PAINT TO MATCH BRICK.

CLIENT



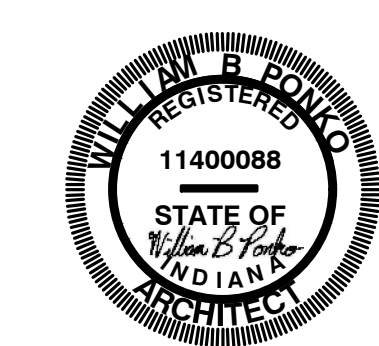
3225 S. HOYT AVENUE
MUNCIE, IN 47302
765-282-3778

CONSULTANT



INDIANAPOLIS, IN
BILLY@R3BARCHITECTURE.COM
574-850-2270

SEAL



PROJECT TITLE

KENSINGTON GARDENS
7298 N KENSINGTON WAY
MCCORDSVILLE, IN 46055

ISSUED FOR:	DATE
PERMIT SET - STATE CDR	2-23-2024
CITY ARC COMMENTS	3-1-2024
BID SET	3-27-2024

REVISIONS	MARK	DESCRIPTION	DATE
A	ADDENDUM A		5-29-2024

ISSUED FOR CONSTRUCTION 10-24-2024

DATE: 10-24-2024

DRAWN BY: BP

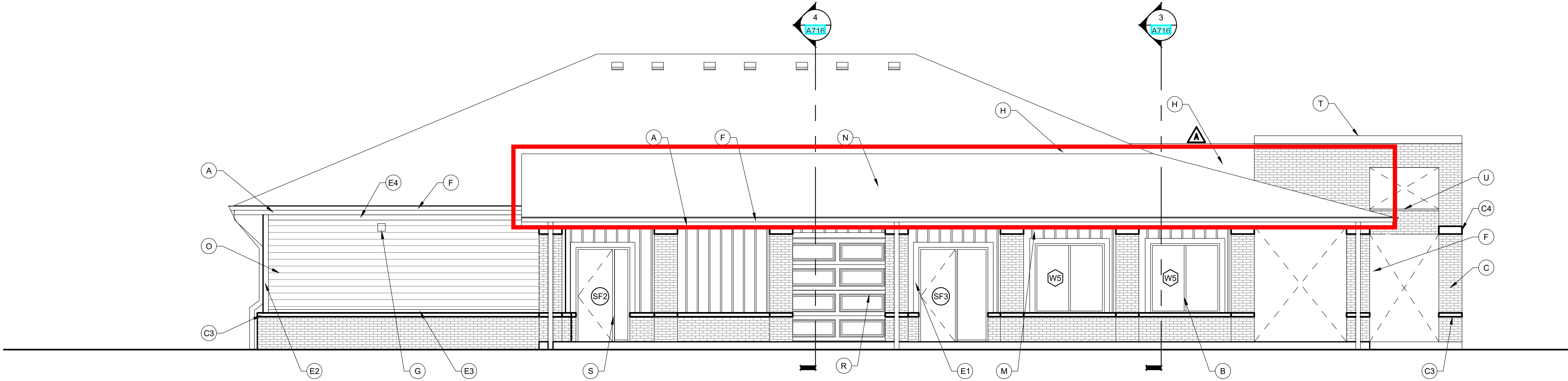
CHECKED BY: BP

SHEET TITLE
ELEVATIONS

SHEET NUMBER

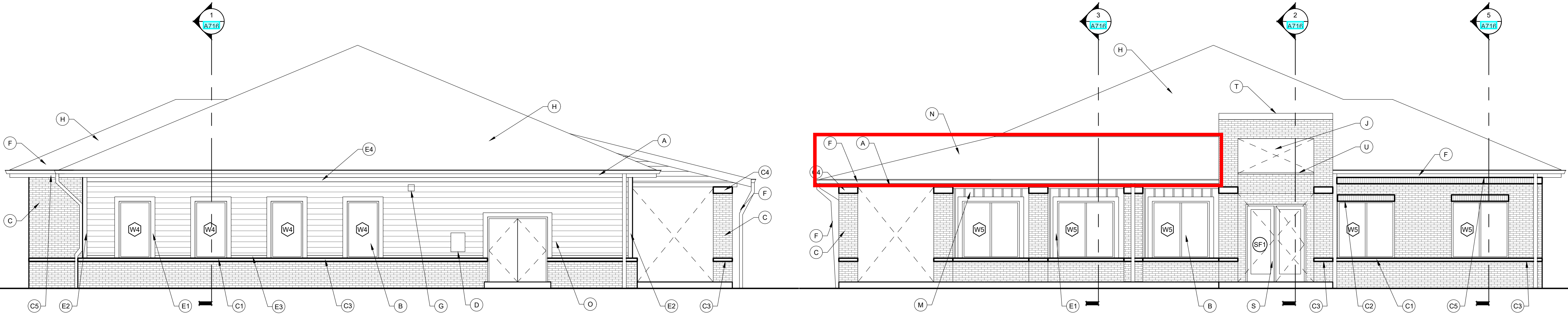
A220

	MASONRY	MASONRY	GLAZING	NET	SIDING	GLAZING	NET
SOUTH WEST	69%	701	0	701	498	180	318
NORTH WEST	87%	555	72	483	180	108	72
NORTH EAST	56%	436	43	393	515	206	309
SOUTH EAST	39%	254	10	244	491	110	381



4 CLUBHOUSE ELEVATIONS - SOUTH EAST POOL SIDE

Scale: 3/16" = 1'-0"

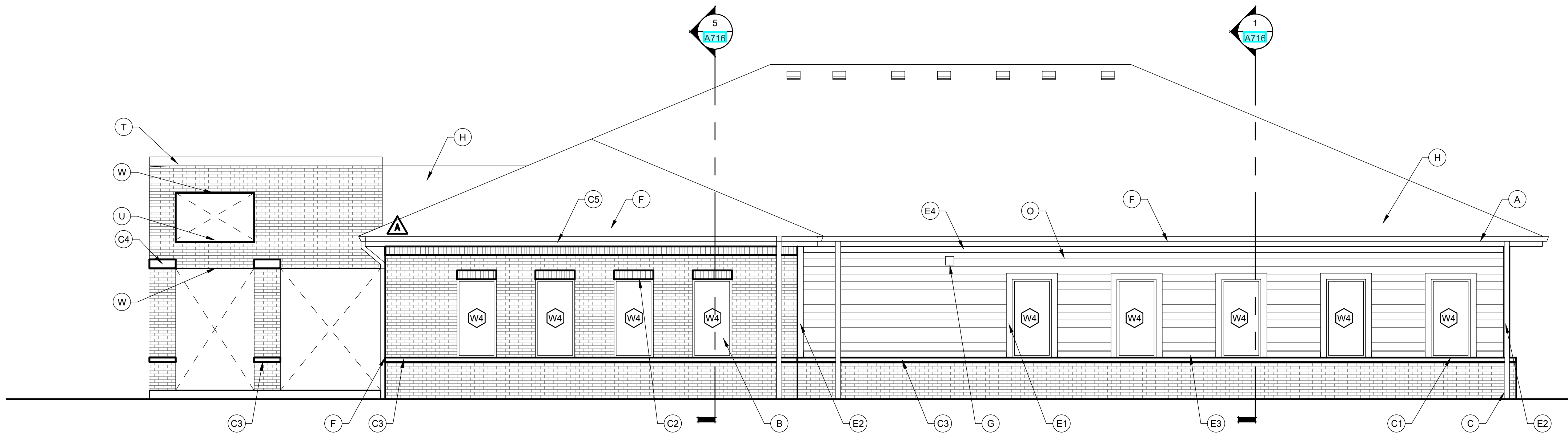


3 CLUBHOUSE ELEVATIONS - SOUTH WEST REAR

Scale: 3/16" = 1'-0"

2 CLUBHOUSE ELEVATIONS - NORTH EAST FRONT

Scale: 3/16" = 1'-0"



1 CLUBHOUSE ELEVATIONS - NORTH WEST POOL SIDE

Scale: 3/16" = 1'-0"

GENERAL ELEVATION NOTES

- FOUNDATION SHOWN FOR REFERENCES ONLY. SEE STRUCTURAL.
- SEAL ALL PENETRATION WITH SEALANT TO MATCH ADJACENT MATERIALS.
- SEE ROOF PLANS FOR ROOF SLOPE, DOWNSPOUT, GUTTER AND ROOF VENT INFORMATION.
- ALL SIDING AND TRIM TO BE INSTALLED PER MANUFACTURER'S INSTRUCTIONS. TOUCH UP PAINT AND PRIMER AT ALL CUTS WHERE COMPOSITE WOOD FIBERS ARE EXPOSED.
- REVIEW ALL PENETRATIONS THROUGH SHEARWALL WITH STRUCTURAL. ANY PENETRATION NOT IN APPROVED ZONES SHOULD BE BROUGHT TO THE ATTENTION OF THE STRUCTURAL ENGINEER IMMEDIATELY.
- PROVIDE FLASHING CUT INTO BRICK WHERE ROOF OR CANOPY TERMINATES INTO BRICK WALL. PROVIDE 1 FULL COURSE VERTICAL COVERAGE, MIN.
- PAINTE ALL EXPOSED METAL THAT IS NOT SPECIFIED OR INDICATED TO RECEIVE A FACTORY FINISH.
- PAINTE ALL DRYER AND EXHAUST VENTS TO MATCH SIDING. SEE A500 SERIES FOR DRYER VENT DETAILS.
- REFER TO DOOR AND WINDOW SCHEDULES FOR TYPES AND SIZES. SEE A600 SERIES.
- ALL TRIM TO BE 5/4" UNLESS OTHERWISE NOTED.
- SIDEWALKS AT BUILDING AND STRUCTURES ON AN ACCESSIBLE ROUTE TO BE FLUSH WITH FINISH FLOOR AT DOORS AND MUST SLOPE AWAY IN ACCORDANCE WITH ADA STANDARDS.
- ALL EXPOSED FLASHING TO BE FACTORY FINISHED BY MANUFACTURER / SUPPLIER OR MATERIAL WHICH IS BEING FLASHED.
- ARCHITECTURAL FINISH FLOOR ELEVATION OF 0'-0" IS EQUAL TO THE HIGHEST GROUND FLOOR ELEVATION AT EACH BUILDING LISTED ON THE CIVIL FINISH FLOOR ELEVATIONS. SEE CIVIL DRAWINGS.
- ALL SOFFITS TO BE PAINTED TO MATCH THE FRONT FACE OF THE WALL THAT IT DIES INTO ABOVE IT.
- PAINTE LOOSE LINTELS AT THE BRICK TO MATCH ADJACENT BRICK COLOR.
- ALL BALCONIES FRAMED WITH PRESSURE TREATED LUMBER EXPOSED FROM BELOW WITHOUT PAINTED FINISH.
- SEE A600 SERIES FOR TYPICAL EXTERIOR DETAILS, FLASHING CONDITIONS, WALL PENETRATIONS, TRANSITION DETAILS, AND AIR & WATER BARRIER SYSTEM RECOMMENDED INSTALLATION DETAILS.
- END LIST

ELEVATION KEYED NOTES

- 5/4" X 10" FASCIA BOARD WITH GUTTER. COLOR GUTTER AND FASCIA WHITE. SEE SPECIFICATIONS FOR MATERIAL AND PROFILE.
 - VINYL WINDOW, BLACK, TYPICAL.
 - BRICK WEEPS AT TOP AND BOTTOM OF WALL. COLOR: DARK BLACK / GRAY SIMILAR TO TERRE HAUTE DOMINO.
 - SLOPED PRECAST SILL UNDER WINDOW. ARCHITECT TO CHOOSE FROM SUPPLIER'S STANDARD PROFILES. COLOR TO MATCH BRICK.
 - SOLDIER COURSE AT TOP OF WALL.
 - PRECAST BAND, OVERHANG BRICK 1" WITH INTEGRAL DRIP EDGE ARCHITECT TO SELECT FROM SUPPLIER'S TYPICAL PROFILES.
 - PRECAST BAND, OVERHANG BRICK 1" WITH INTEGRAL DRIP EDGE.
 - SOLDIER COURSE AT TOP OF WALL.
 - ELECTRIC METER BANK. TRIM OUT AREA FOR METERS AND FINISH WITH FLAT SIDING PANELS. PAINT TO MATCH ADJACENT BRICK.
 - 5/4" TRIM BOARD. COLOR: HARDIE COBBLE STONE.
 - X6" WIDE TRIM AROUND WINDOWS AND DOORS.
 - X6" WIDE TRIM AT INSIDE & OUTSIDE CORNERS.
 - X6" HORIZONTAL BASE TRIM ABOVE BRICK.
 - X6" HORIZONTAL BAND BELOW OVERHANG / SOFFIT. SEE DETAILS.
 - X6" TRIM ABOVE PATIO SLAB.
 - GUTTERS & DOWNSPOUTS ON ELEVATIONS. MATCH ADJACENT COPING / SIDING COLOR. TIE INTO STORM SYSTEM. SEE CIVIL PLANS. PAINT EXPOSED PVC TO MATCH DOWNSPOUTS. COLOR TO BE SELECTED FROM SAMPLES.
 - LIGHTING WALL PACK. SEE ADDITIONAL NOTES ON THE LIGHTING FIXTURES SCHEDULE. FULL CUT-OFF FIXTURES PER CITY REQUIREMENTS.
 - ASPHALT ARCHITECTURAL SHINGLE ROOF, "30 YEAR WARRANTY" ON SYNTHETIC UNDERLAYMENT AND 5/8" OSB DECKING ON PRE-ENGINEERED WOOD TRUSSES. ROOF SLOPE 6:12, TYPICAL. COLOR DARK GRAY ARCHITECTURAL. SUBMIT COLORS FOR APPROVAL.
 - EDGE OF ROOF WITH DRIP EDGE AND 5/4 X 6" TRIM, TYPICAL.
 - SMOOTH SIDING PANEL AT GABLE, TYPICAL.
 - ALUMINUM RAILING TYPICAL. SEE ADDITIONAL NOTES ON BALCONY FRAMING PLANS. NO RAILINGS REQUIRED ON GROUND FLOOR AT BALCONIES. COLOR BLACK.
 - COMPOSITE POST. 8x6 REAL POST - SMOOTH. PAINT HIGH GLOSS MATCH CANOPY NOTE "P". WRAP TOP OF COLUMN WITH 5/4"x6" TRIM AND BOTTOM WITH 5/4"x8" TRIM. PAINT COLOR: TO MATCH HARDIE IRON GRAY.
 - BOARD & BATTEN FIBER CEMENT SIDING. COLOR: ARTIC WHITE.
 - SEE NOTE "H".
 - LAP SIDING, FIBER CEMENT, 7" EXPOSURE. COLOR: DEEP OCEAN.
 - PATIO WALL SCIENCE. SEE LIGHTING SCHEDULE. FULL CUT-OFF "NIGHT SKY" COMPLIANT PER CITY COMMENTS.
 - THIS UTILITY CLOSET VARIES FROM OTHER BUILDINGS. CITY REQUIRES ADDITIONAL BRICK IN LIEU OF LAP SIDING. SEE FLOOR PLAN. APPLIES TO ALL SIDES. SLAB EDGE PLAN AT TYPE B. BUILDING #2, TYPE A: BUILDING #5 & 9.
- CLUBHOUSE ONLY
- GLASS GARAGE DOOR TESTED IN ACCORDANCE WITH ANSI D38M105, REQUIRED PER COMMONWEALTH.
 - ALUMINUM STOREFRONT. DARK BRONZE ANODIZED. SEE A630 SERIES FOR MORE INFORMATION. PROVIDE SAMPLES FOR COMPARISON WITH THE TIMELY FAUX STOREFRONT FOR CONSISTENCY.
 - METAL COPING. COLOR TO MATCH RENDERINGS. SEE SECTIONS FOR ADDITIONAL INFORMATION.
 - COPING OVER BRICK AT OPENING. SLOPE TO DRAIN. PROVIDE 1" DRIP EDGE AND HEMMED EDGE. TURN UP WALL AND SET IN MORTAR JOINT.
 - DECORATIVE CHANDELIER, NOT SHOWN, SEE INTERIORS AND ELECTRICAL PLANS.
 - STEEL LINTEL ABOVE OPENINGS. TYPICAL. PAINT TO MATCH BRICK.

CLIENT

TRG THE RIDGE GROUP

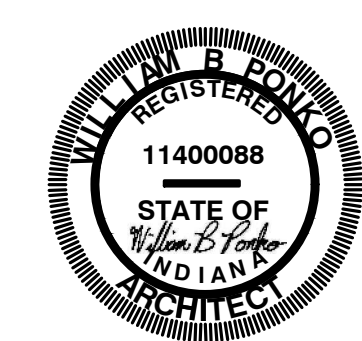
3225 S. HOYT AVENUE
MUNCIE, IN 47302
765-282-3778

CONSULTANT

R3B ARCHITECTURE, LLC
- design & services -

INDIANAPOLIS, IN
BILLY@R3BARCHITECTURE.COM
574-850-2270

SEAL



PROJECT TITLE

KENSINGTON GARDENS
7298 N KENSINGTON WAY
MCCORDSVILLE, IN 46055

ISSUED FOR:	DATE
PERMIT SET - STATE CDR	2-23-2024
CITY ARC COMMENTS	3-1-2024
BID SET	3-27-2024

REVISIONS	MARK	DESCRIPTION	DATE
A	ADDENDUM A		5-29-2024

ISSUED FOR CONSTRUCTION 10-24-2024

DATE: 10-24-2024

DRAWN BY: BP

CHECKED BY: BP

SHEET TITLE

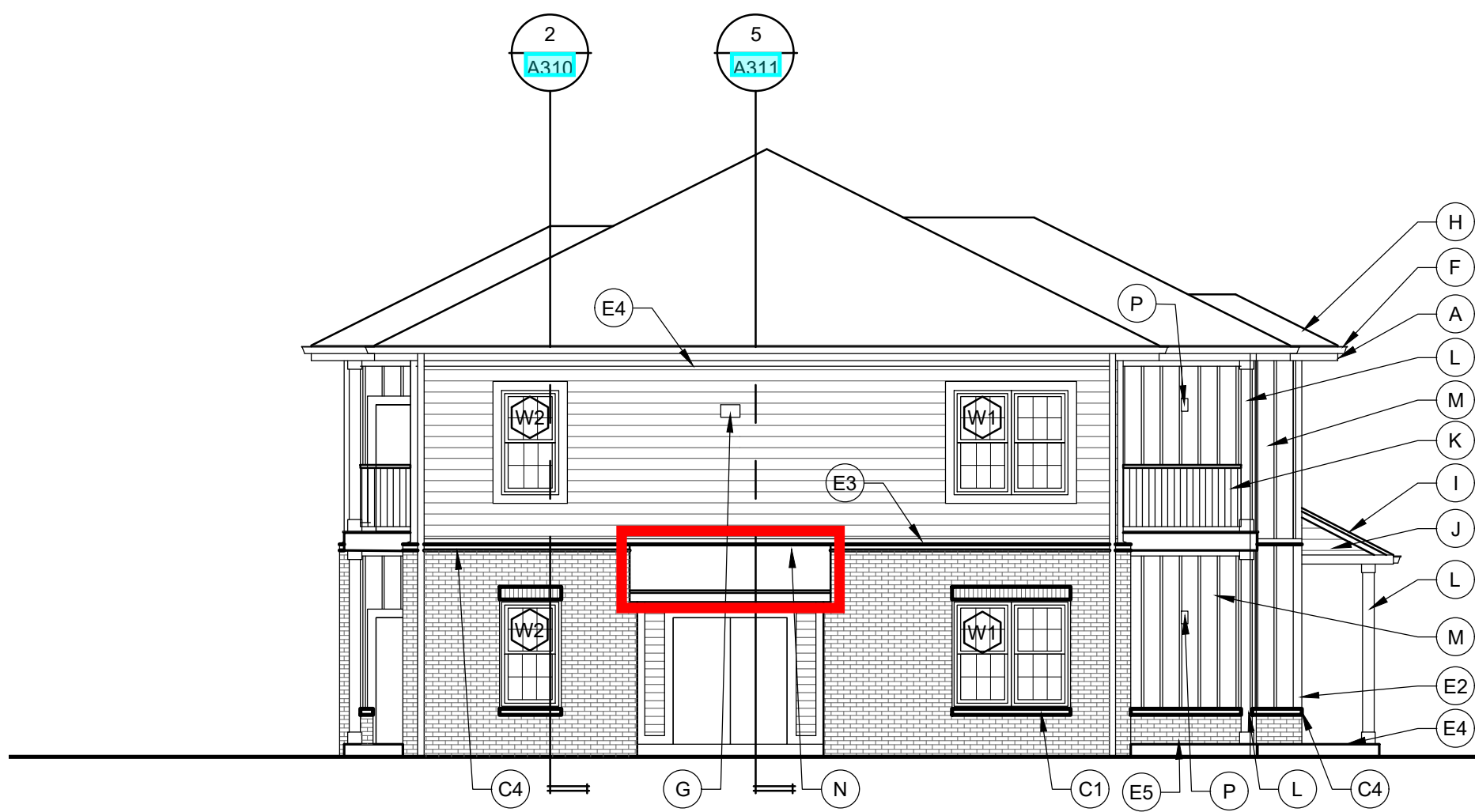
CLUBHOUSE ELEVATIONS

SHEET NUMBER

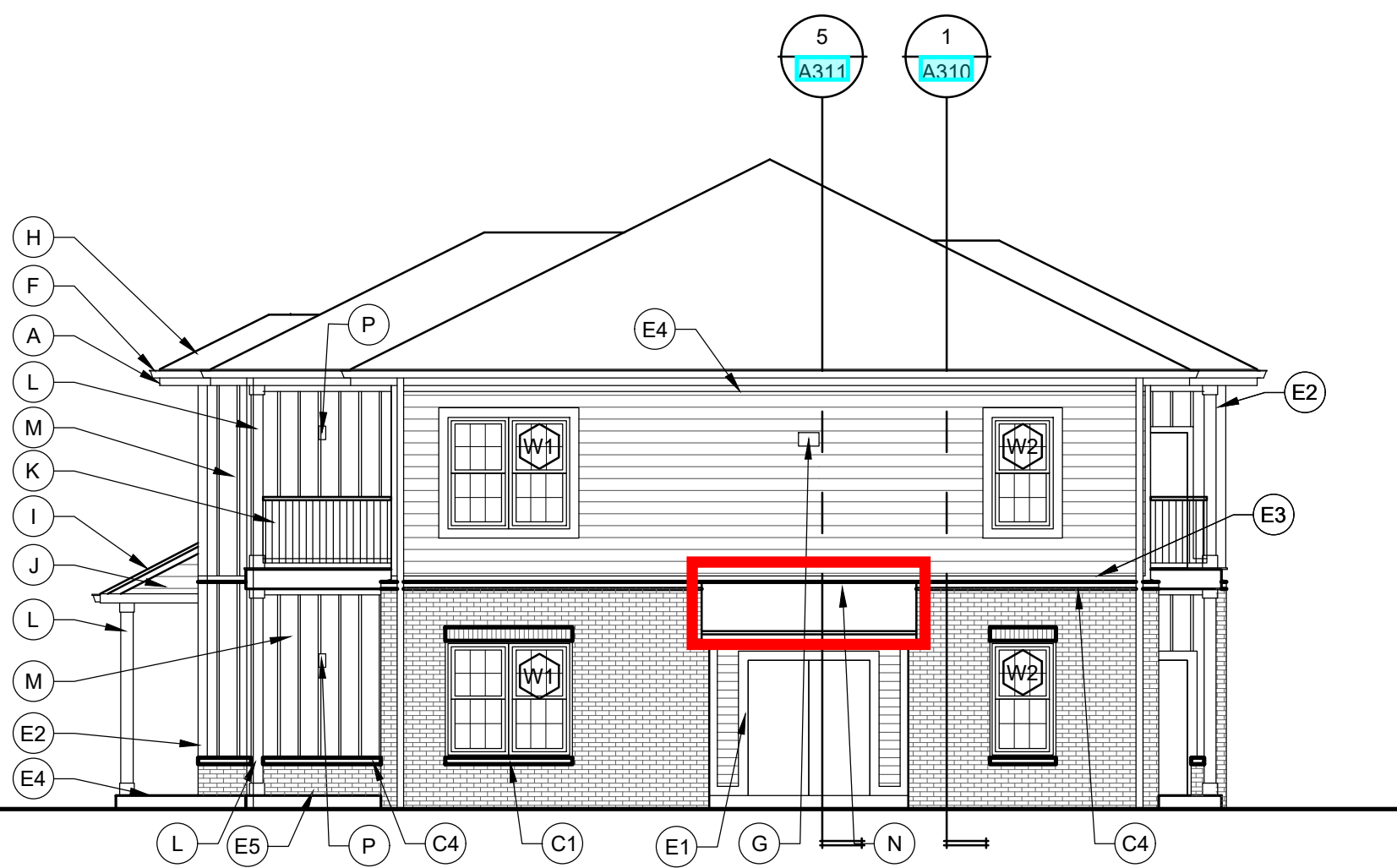
A712



3 ELEVATION - TYPE A - SIDE BUILDINGS 5 & 9
Scale: 1/8" = 1' - 0"



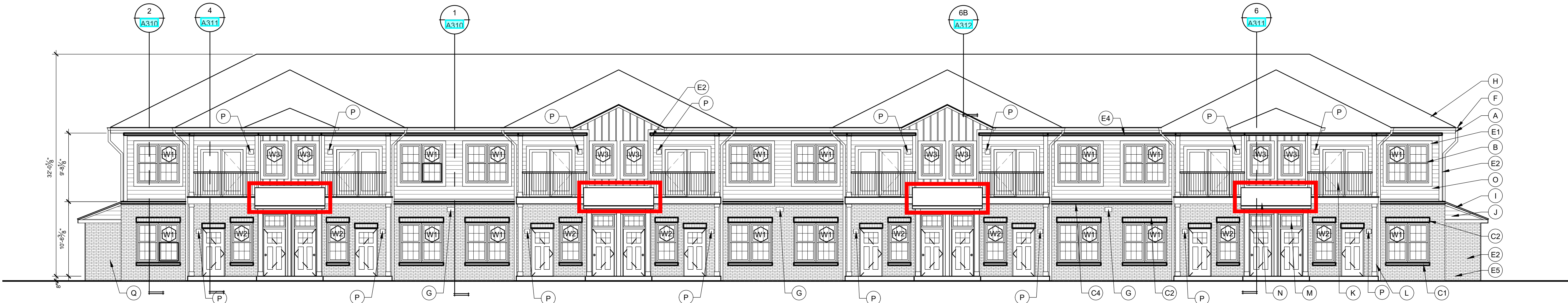
4 ELEVATION - TYPE A - SIDE
Scale: 1/8" = 1' - 0"



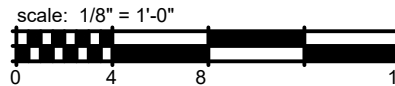
3 ELEVATION - TYPE A - SIDE
Scale: 1/8" = 1' - 0"



2 ELEVATION - TYPE A - REAR OVERALL
Scale: 1/8" = 1' - 0"



1 ELEVATION - TYPE A - FRONT OVERALL
Scale: 1/8" = 1' - 0"



GENERAL ELEVATION NOTES

- FOUNDATION SHOWN FOR REFERENCES ONLY. SEE STRUCTURAL.
- SEAL ALL PENETRATIONS WITH SEALANT TO MATCH ADJACENT MATERIALS.
- SEE ROOF PLANS FOR ROOF SLOPE, DOWNSPOUT, GUTTER AND ROOF VENT INFORMATION.
- ALL SIDING AND TRIM TO BE INSTALLED PER MANUFACTURER'S INSTRUCTIONS. TOUCH UP PAINT AND PRIMER AT ALL CUTS WHERE COMPOSITE WOOD FIBERS ARE EXPOSED.
- REVIEW ALL PENETRATIONS THROUGH SHEARWALL WITH STRUCTURAL. ANY PENETRATION NOT IN APPROVED ZONES SHOULD BE BROUGHT TO THE ATTENTION OF THE STRUCTURAL ENGINEER IMMEDIATELY.
- PROVIDE FLASHING CUT INTO BRICK WHERE ROOF OR CANOPY TERMINATES INTO BRICK WALL. PROVIDE 1 FULL COURSE VERTICAL COVERAGE, MIN.
- PAIN'T ALL EXPOSED METAL THAT IS NOT SPECIFIED OR INDICATED TO RECEIVE A FACTORY FINISH.
- PAIN'T ALL DRYER AND EXHAUST VENTS TO MATCH SIDING. SEE A500 SERIES FOR DRYER VENT DETAILS.
- REFER TO DOOR AND WINDOW SCHEDULES FOR TYPES AND SIZES. SEE A600 SERIES.
- ALL TRIM TO BE 5/4" UNLESS OTHERWISE NOTED.
- SIDEWALKS AT BUILDING AND STRUCTURES ON AN ACCESSIBLE ROUTE TO BE FLUSH WITH FINISH FLOOR AT DOORS AND MUST SLOPE AWAY IN ACCORDANCE WITH ADA STANDARDS.
- ALL EXPOSED FLASHING TO BE FACTORY FINISHED BY MANUFACTURER / SUPPLIER OR MATERIAL WHICH IS BEING FLASHED.
- ARCHITECTURAL FINISH FLOOR ELEVATION OF 0'-0" IS EQUAL TO THE HIGHEST GROUND FLOOR ELEVATION AT EACH BUILDING LISTED ON THE CIVIL FINISH FLOOR ELEVATIONS. SEE CIVIL DRAWINGS.
- ALL SOFFITS TO BE PAINTED TO MATCH THE FRONT FACE OF THE WALL THAT IT DIES INTO ABOVE IT.
- PAIN'T LOOSE LINTELS AT THE BRICK TO MATCH ADJACENT BRICK COLOR.
- ALL BALCONIES FRAMED WITH PRESSURE TREATED LUMBER EXPOSED FROM BELOW WITHOUT PAINTED FINISH.
- SEE A600 SERIES FOR TYPICAL EXTERIOR DETAILS, FLASHING CONDITIONS, WALL PENETRATIONS, TRANSITION DETAILS, AND AIR & WATER BARRIER SYSTEM RECOMMENDED INSTALLATION DETAILS.
- END LIST

ELEVATION KEYED NOTES

- A. 5/4" X 10" FASCIA BOARD WITH GUTTER. COLOR GUTTER AND FASCIA WHITE. SEE SPECIFICATIONS FOR MATERIAL AND PROFILE.
- B. VINYL WINDOW, BLACK, TYPICAL.
- C. BRICK (WEEPS AT TOP AND BOTTOM OF WALL.) COLOR: DARK BLACK / GRAY SIMILAR TO TERRE HAUTE DOMINO.
- C.1. SLOPED PRECAST SILL UNDER WINDOW. ARCHITECT TO CHOOSE FROM SUPPLIERS STANDARD PROFILES. COLOR TO MATCH BRICK.
- C.2. SOLDIER COURSE OVER WINDOWS AND DOORS WITH PAINTED STEEL LINTEL AND VERTICAL WAFFER WEEPS. COLOR TO MATCH BRICK.
- C.3. 4" PRECAST BAND, OVERHANG BRICK 1" WITH INTEGRAL DRIP EDGE. ARCHITECT TO SELECT FROM SUPPLIERS TYPICAL PROFILES.
- C.4. 8" PRECAST BAND, OVERHANG BRICK 1" WITH INTEGRAL DRIP EDGE.
- C.5. SOLDIER COURSE AT TOP OF WALL.
- D. ELECTRIC METER BANK. TRIM OUT AREA FOR METERS AND FINISH WITH FLAT SIDING PANELS. PAINT TO MATCH ADJACENT BRICK.
- E. 5/4" TRIM BOARD. COLOR: HARDIE COBBLE STONE.
- E.1. X6" WIDE TRIM AROUND WINDOWS AND DOORS.
- E.2. X6" WIDE TRIM AT INSIDE & OUTSIDE CORNERS.
- E.3. X6" HORIZONTAL BASE TRIM ABOVE BRICK.
- E.4. X6" HORIZONTAL BAND BELOW OVERHANG / SOFFIT. SEE DETAILS.
- E.5. X6" TRIM ABOVE PATIO SLAB.
- F. GUTTERS & DOWNSPOUTS ON ELEVATIONS. MATCH ADJACENT COPING / SIDING COLOR. TIE INTO STORM SYSTEM. SEE CIVIL PLANS. PAINT EXPOSED PVC TO MATCH DOWNSPOUTS. COLOR TO BE SELECTED FROM SAMPLES.
- G. LIGHTING WALL PACK. SEE ADDITIONAL NOTES ON THE LIGHTING FIXTURES SCHEDULE. FULL CUT-OFF FIXTURES PER CITY REQUIREMENTS.
- H. ASPHALT ARCHITECTURAL SHINGLE ROOF, "30 YEAR WARRANTY" ON SYNTHETIC UNDERLAYMENT AND 5/8" OSB DECKING ON PRE-ENGINEERED WOOD TRUSSES. ROOF SLOPE 6/12. TYPICAL. COLOR DARK GRAY ARCHITECTURAL. SUBMIT COLORS FOR APPROVAL.
- I. EDGE OF ROOF WITH DRIP EDGE AND 5/4 X 6" TRIM, TYPICAL.
- J. SMOOTH SIDING PANEL AT GABLE, TYPICAL.
- K. ALUMINUM RAILING TYPICAL. SEE ADDITIONAL NOTES ON BALCONY FRAMING PLANS. NO RAILINGS REQUIRED ON GROUND FLOOR AT BALCONIES. COLOR BLACK.
- L. COMPOSITE POST, 8X8 REAL POST - SMOOTH, PAINT HIGH GLOSS MATCH CANOPY NOTE 1P. WRAP TOP OF COLUMN WITH 5/4X6" TRIM AND BOTTOM WITH 5/4X6" TRIM. PAINT COLOR: TO MATCH HARDIE IRON GRAY.
- M. BOARD & BATTEN FIBER CEMENT SIDING. COLOR: ARTIC WHITE.
- N. SEE NOTE "H".
- O. LAP SIDING, FIBER CEMENT, 7" EXPOSURE. COLOR: DEEP OCEAN.
- P. PATIO WALL SCIENCE. SEE LIGHTING SCHEDULE. FULL CUT-OFF "NIGHT SKY" COMPLIANT PER CITY COMMENTS.
- Q. THIS UTILITY CLOSET VARIES FROM OTHER BUILDINGS. CITY REQUIRES ADDITIONAL BRICK IN LIEU OF LAP SIDING. SEE FLOOR PLAN, APPLIES TO ALL SIDES. SLAB EDGE PLAN AT TYPE B. BUILDING #2, TYPE A. BUILDING #5 & 9.

- CLUBHOUSE ONLY
- R. GLASS GARAGE DOOR TESTED IN ACCORDANCE WITH ANSI D384.105, REQUIRED PER COMM CHECK.
- S. ALUMINUM STOREFRONT. DARK BRONZE ANODIZED. SEE A630 SERIES FOR MORE INFORMATION. PROVIDE SAMPLES FOR COMPARISON WITH THE TIMELY FAUX STOREFRONT FOR CONSISTENCY.
- T. METAL COPING. COLOR TO MATCH RENDERINGS. SEE SECTIONS FOR ADDITIONAL INFORMATION.
- U. COPING OVER BRICK AT OPENING. SLOPE TO DRAIN. PROVIDE 1" DRIP EDGE AND HEMMED EDGE. TURN UP WALL AND SET IN MORTAR JOINT.
- V. DECORATIVE CHANDELIER, NOT SHOWN. SEE INTERIORS AND ELECTRICAL PLANS.
- W. STEEL LINTEL ABOVE OPENINGS, TYPICAL. PAINT TO MATCH BRICK.

CLIENT

TRG THE RIDGE GROUP

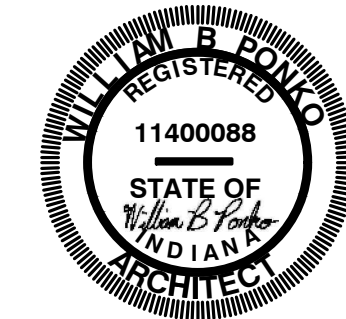
3225 S. HOYT AVENUE
MUNCIE, IN 47302
765-282-3778

CONSULTANT



INDIANAPOLIS, IN
BILLY@R3BARCHITECTURE.COM
574-850-2270

SEAL



PROJECT TITLE

KENSINGTON GARDENS
7298 N KENSINGTON WAY
MCCORDSVILLE, IN 46055

ISSUED FOR:	DATE
PERMIT SET - STATE CDR	2-23-2024
CITY ARC COMMENTS	3-1-2024
BID SET	3-27-2024

REVISIONS		
MARK	DESCRIPTION	DATE
A	ADDENDUM A	5-29-2024
ISSUED FOR CONSTRUCTION		
10-24-2024		

DATE: 10-24-2024

DRAWN BY: BP

CHECKED BY: BP

SHEET TITLE

ELEVATIONS

SHEET NUMBER

A210