

PROJECT	DESIGNATION
--	--
CONTRACT	
--	

TOWN OF  
MCCORDSVILLE

CR 600W AND 2ND STREET  
INTERSECTION IMPROVEMENT

PROJECT NO. X ( ) P.E.  
PROJECT NO. X ( ) R/W  
PROJECT NO. X ( ) CONST.

Intersection improvement at the intersection of CR 600 W and 2nd Street beginning approximately 435 ft South of 2nd St. to approximately 288 ft North of 2nd St. in Sections 25 and 26, T-17-N, R-5-E, Vernon Township, Hancock County, State of Indiana.

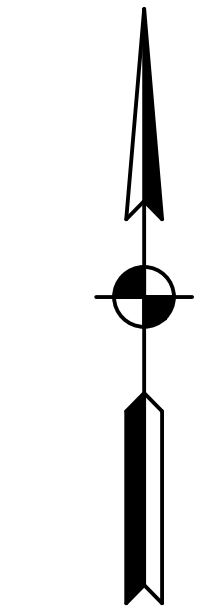
Gross Length: 0.14 mi Latitude: N 39°53'39"  
Net Length: 0.14 mi Longitude: W 85°55'09"

SCALES  
Plan: 1" = 20' Profile: 1" = 5'

End Project  
Sta. 112+76.20 "PR-B"



Begin Project  
Sta. 105+53.43 "PR-B"



SCALE: 1" = 1000'

Indiana Department of Transportation  
Standard Specifications dated 2022,  
and Town of McCordsville Standards  
dated 2005 to be used with these  
plans.



8365 Keystone Crossing, Suite 201, Indianapolis, IN. 46240 (317) 202-0864

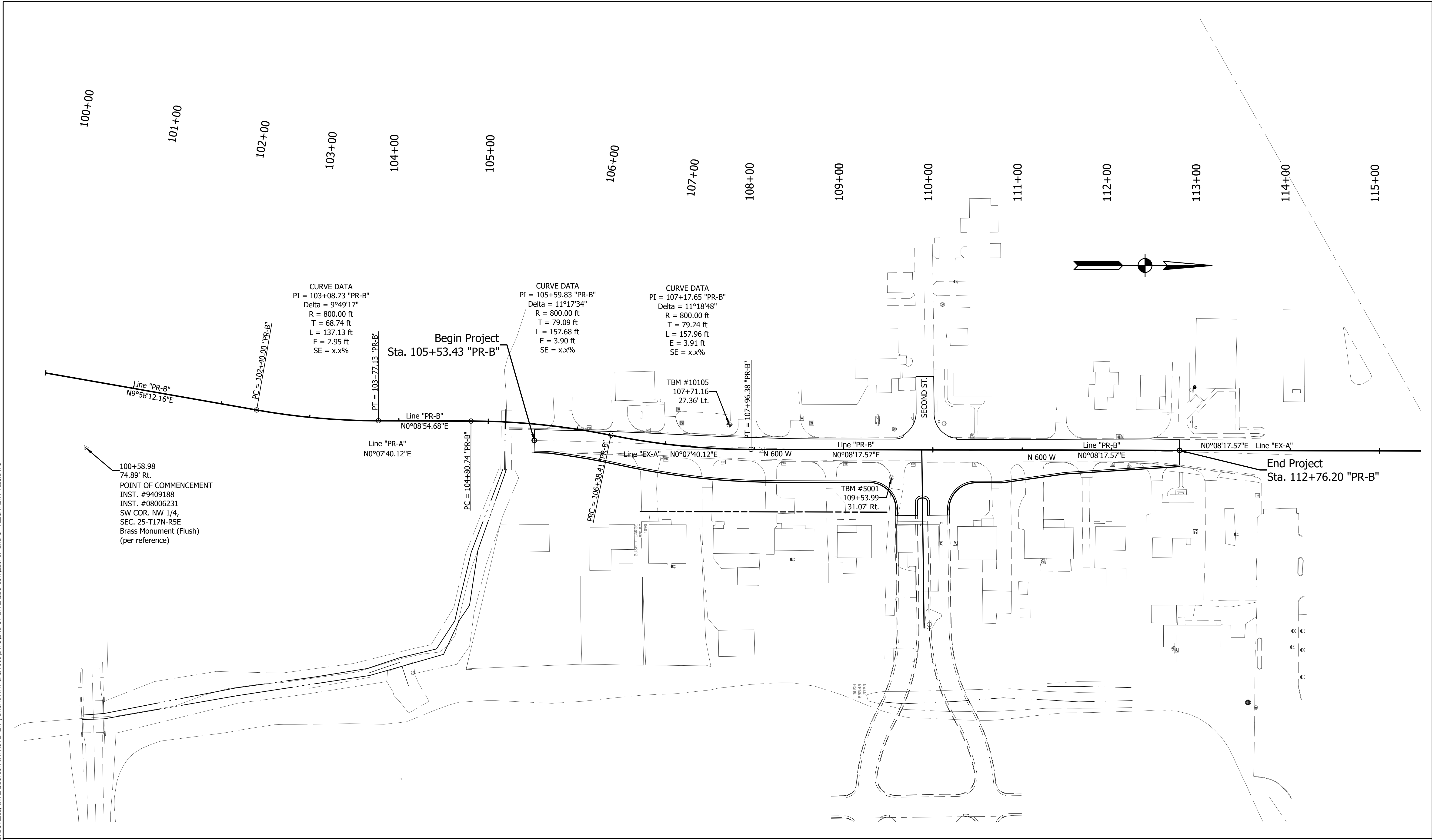
PLANS PREPARED BY:	A & F ENGINEERING CO., LLC	PHONE NUMBER
CERTIFIED BY:		XX/XX/2023 DATE
APPROVED FOR LETTING:	INDIANA DEPARTMENT OF TRANSPORTATION	DATE

BRIDGE FILE	
N/A	
DESIGNATION	
--	
SURVEY BOOK	SHEETS
1	of 22
CONTRACT	PROJECT
--	--





Z:\2022\22071P-TOWN OF MCCORDSVILLE, INTERSECTION IMPROVEMENT, BROADWAY & CR 600\DWG\2ND ST INTERSECTION\22071P-2ND ST-ALIGNMENT TIES.DWG



8365 Keystone Crossing, Suite 201, Indianapolis, IN. 46240 (317) 202-0864

RECOMMENDED  
FOR APPROVAL \_\_\_\_\_ XX/XX/2023  
DESIGN ENGINEER DATE

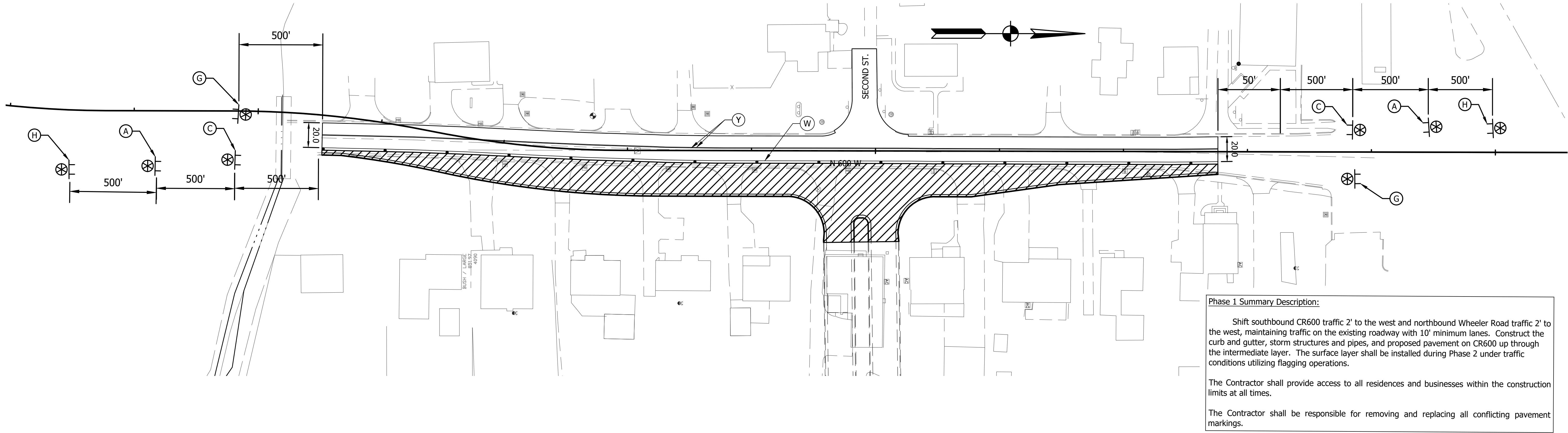
DESIGNED: \_\_\_\_\_ DH DRAWN: \_\_\_\_\_ DH  
CHECKED: \_\_\_\_\_ JTR CHECKED: \_\_\_\_\_ JTR

TOWN OF MCCORDSVILLE

ALIGNMENT REFERENCE TIES

HORIZONTAL SCALE 1" = 50'	BRIDGE FILE N/A
VERTICAL SCALE N/A	DESIGNATION --
SURVEY BOOK	SHEETS
CONTRACT --	4 of 22 PROJECT --

Z:\2\2022\22071P-TOWN OF MCCORDSVILLE, INTERSECTION IMPROVEMENT, BROADWAY & CR 600\DWG\2ND ST INTERSECTION\22071P-2ND ST-MOT.DWG

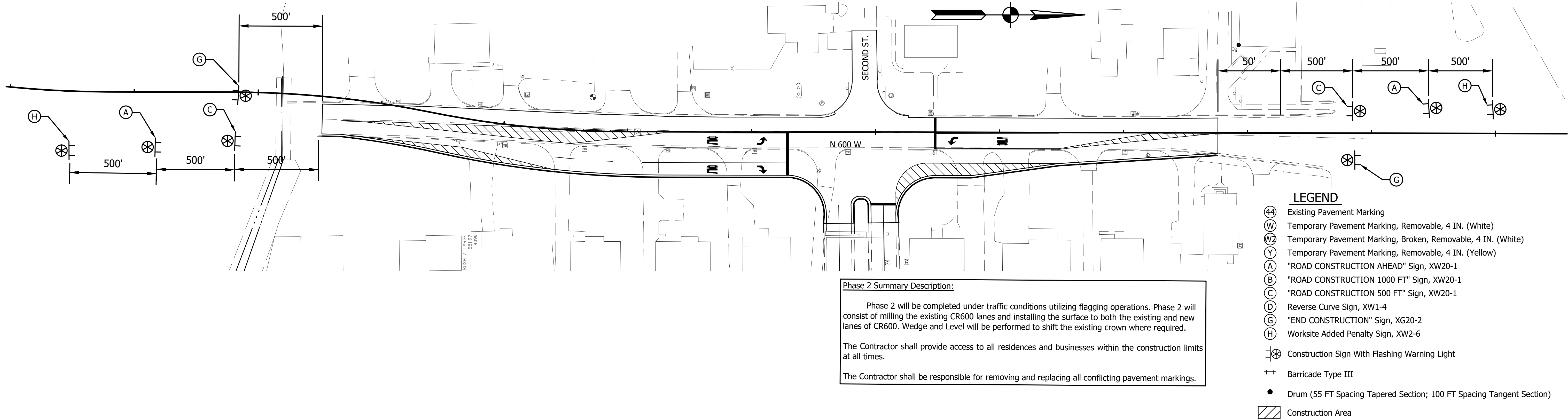


**Phase 1 Summary Description:**

Shift southbound CR600 traffic 2' to the west and northbound Wheeler Road traffic 2' to the west, maintaining traffic on the existing roadway with 10' minimum lanes. Construct the curb and gutter, storm structures and pipes, and proposed pavement on CR600 up through the intermediate layer. The surface layer shall be installed during Phase 2 under traffic conditions utilizing flagging operations.

The Contractor shall provide access to all residences and businesses within the construction limits at all times.

The Contractor shall be responsible for removing and replacing all conflicting pavement markings.



**Phase 2 Summary Description:**

Phase 2 will be completed under traffic conditions utilizing flagging operations. Phase 2 will consist of milling the existing CR600 lanes and installing the surface to both the existing and new lanes of CR600. Wedge and Level will be performed to shift the existing crown where required.

The Contractor shall provide access to all residences and businesses within the construction limits at all times.

The Contractor shall be responsible for removing and replacing all conflicting pavement markings.

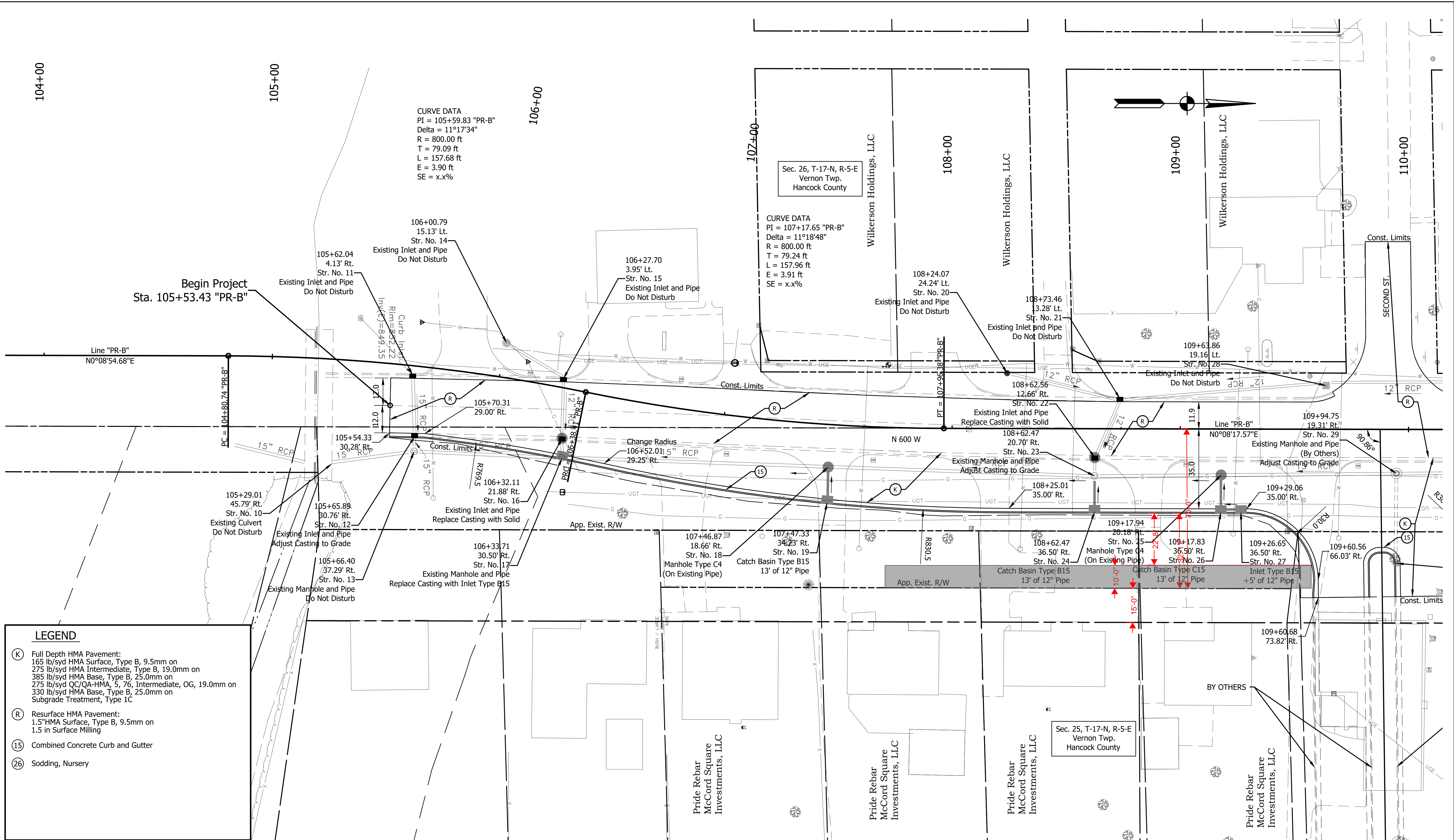
- LEGEND**
- (44) Existing Pavement Marking
  - (W) Temporary Pavement Marking, Removable, 4 IN. (White)
  - (W2) Temporary Pavement Marking, Broken, Removable, 4 IN. (White)
  - (Y) Temporary Pavement Marking, Removable, 4 IN. (Yellow)
  - (A) "ROAD CONSTRUCTION AHEAD" Sign, XW20-1
  - (B) "ROAD CONSTRUCTION 1000 FT" Sign, XW20-1
  - (C) "ROAD CONSTRUCTION 500 FT" Sign, XW20-1
  - (D) Reverse Curve Sign, XW1-4
  - (G) "END CONSTRUCTION" Sign, XG20-2
  - (H) Worksite Added Penalty Sign, XW2-6
  - ⊗ Construction Sign With Flashing Warning Light
  - ++ Barricade Type III
  - Drum (55 FT Spacing Tapered Section; 100 FT Spacing Tangent Section)
  - ▨ Construction Area

RECOMMENDED FOR APPROVAL _____		XX/XX/2023 DATE _____	
DESIGNED: _____		DRAWN: _____	
CHECKED: _____		CHECKED: _____	

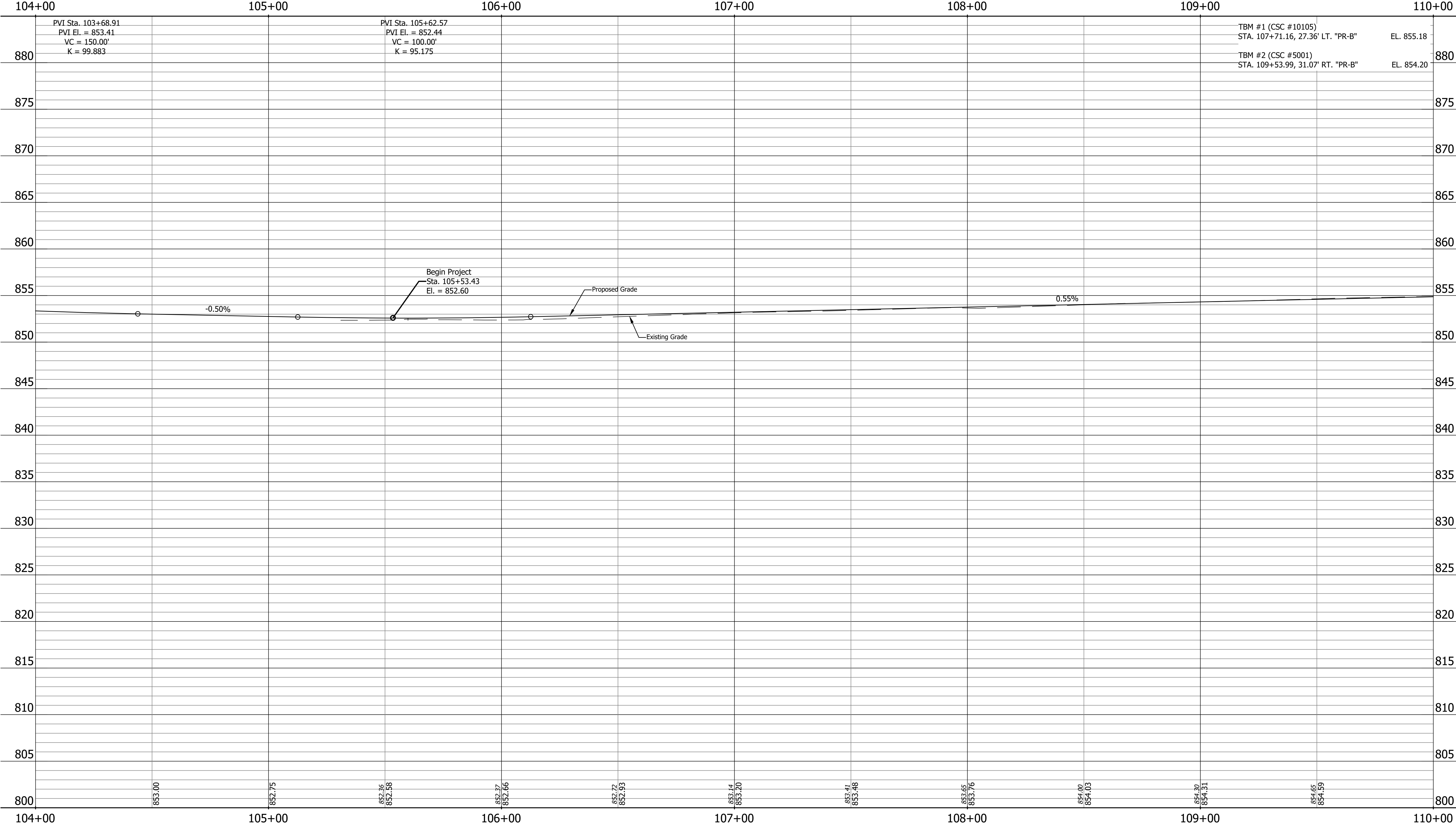
TOWN OF MCCORDSVILLE
MAINTENANCE OF TRAFFIC

HORIZONTAL SCALE 1" = 40'	BRIDGE FILE N/A	
VERTICAL SCALE N/A	DESIGNATION --	
SURVEY BOOK	SHEETS	
	5	of 22
CONTRACT --	PROJECT --	

Z:\2022\2021P-TOWN OF MCCORDSVILLE, INTERSECTION IMPROVEMENT, BROADWAY & CR 600\DWG\2ND ST INTERSECTION\22071P-2ND ST-PLAN.DWG



Z:\2022\22071P-TOWN OF MCCORDSVILLE, INTERSECTION IMPROVEMENT, BROADWAY & CR 600\DWG\2ND ST INTERSECTION\22071P-2ND ST-PROF.DWG





**A&F ENGINEERING**

Transportation & Site Engineering

Creating Order Since 1966

8365 Keystone Crossing, Suite 201, Indianapolis, IN. 46240 (317) 202-0864

RECOMMENDED  
FOR APPROVAL

DESIGN ENGINEER

DATE

XX/XX/2023

DESIGNED: DH

DRAWN: DH

CHECKED: JTR

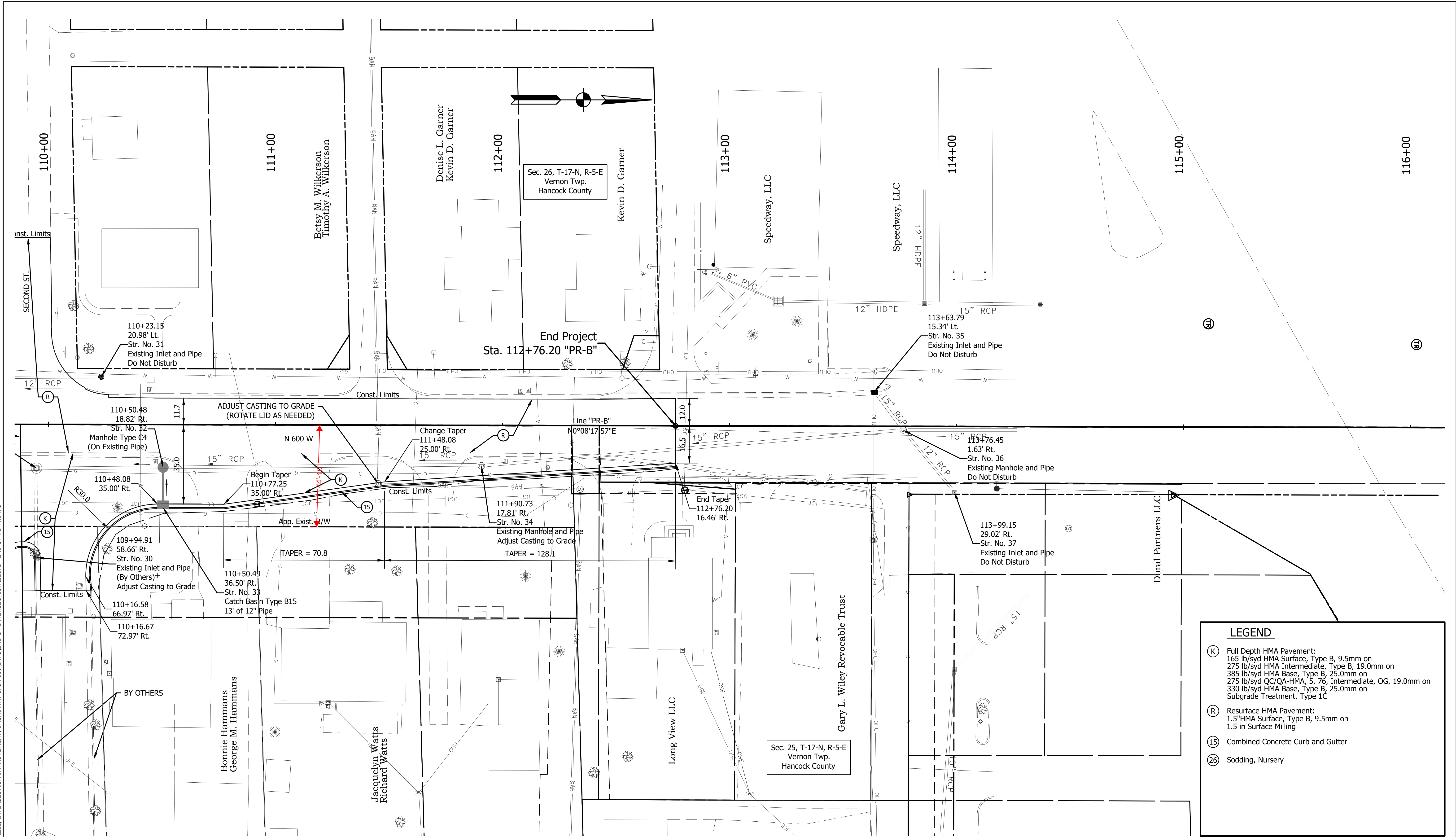
CHECKED: JTR

TOWN OF MCCORDSVILLE

PROFILE - LINE "PR-B"  
STA. 104+00.0 TO STA. 110+00.00

HORIZONTAL SCALE 1" = 20'	BRIDGE FILE N/A
VERTICAL SCALE N/A	DESIGNATION --
SURVEY BOOK	SHEETS
	7 of 22
CONTRACT --	PROJECT --

Z:\2022\2021P-TOWN OF MCCORDSVILLE, INTERSECTION IMPROVEMENT, BROADWAY & CR 600\DWG\2ND ST INTERSECTION\22071P-2ND ST-PLAN.DWG



LEGEND

(K)

Full Depth HMA Pavement:  
165 lb/syd HMA Surface, Type B, 9.5mm on  
275 lb/syd HMA Intermediate, Type B, 19.0mm on  
385 lb/syd HMA Base, Type B, 25.0mm on  
275 lb/syd QC/QA-HMA, 5, 76, Intermediate, OG, 19.0mm on  
330 lb/syd HMA Base, Type B, 25.0mm on  
Subgrade Treatment, Type 1C

(R)

Resurface HMA Pavement:  
1.5\"HMA Surface, Type B, 9.5mm on  
1.5 in Surface Milling

(15)

Combined Concrete Curb and Gutter

(26)

Sodding, Nursery

A&F ENGINEERING

Transportation & Site Engineering

Creating Order Since 1966

8365 Keystone Crossing, Suite 201, Indianapolis, IN. 46240 (317) 202-0864

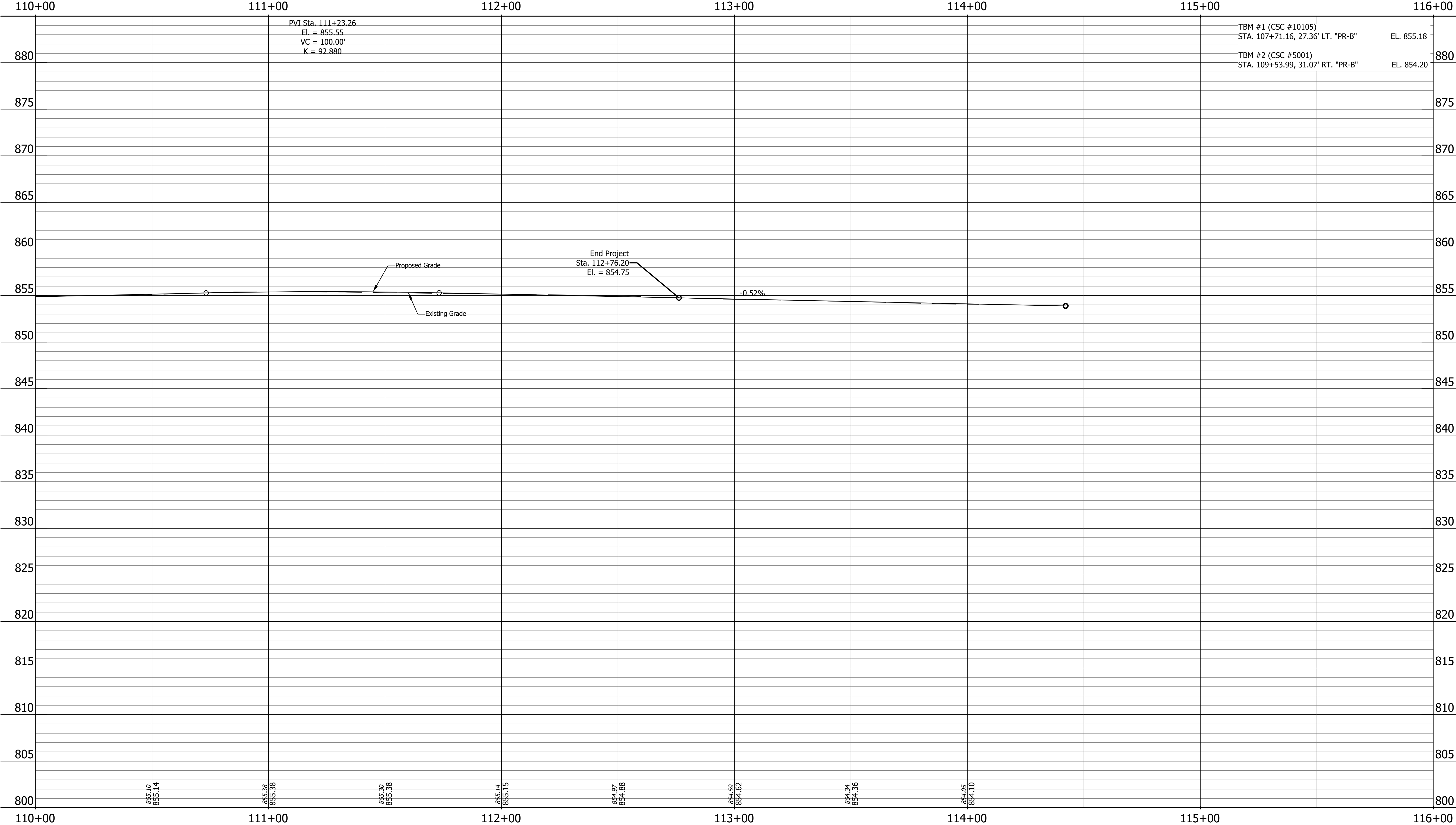
RECOMMENDED FOR APPROVAL		XX/XX/2023	
DESIGN ENGINEER		DATE	
DESIGNED:	DH	DRAWN:	DH
CHECKED:	JTR	CHECKED:	JTR

TOWN OF MCCORDSVILLE

PLAN - LINE "PR-B"  
STA. 110+00.00 TO STA. 116+00.00

HORIZONTAL SCALE	BRIDGE FILE		
1"=20' XREF	N/A		
VERTICAL SCALE	DESIGNATION		
N/A	--		
SURVEY BOOK	SHEETS		
	8	of	22
CONTRACT	PROJECT		
--	--		

Z:\2022\22071P-TOWN OF MCCORDSVILLE, INTERSECTION IMPROVEMENT, BROADWAY & CR 600\DWG\2ND ST INTERSECTION\22071P-2ND ST-PROF.DWG





**A&F ENGINEERING**

Transportation & Site Engineering

Creating Order Since 1966

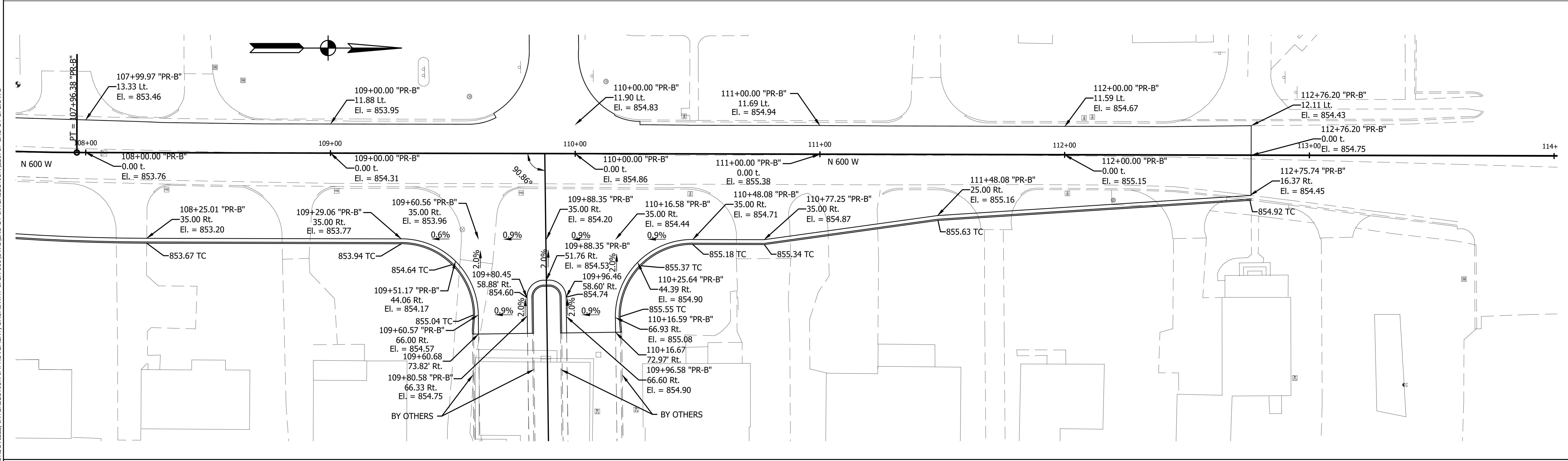
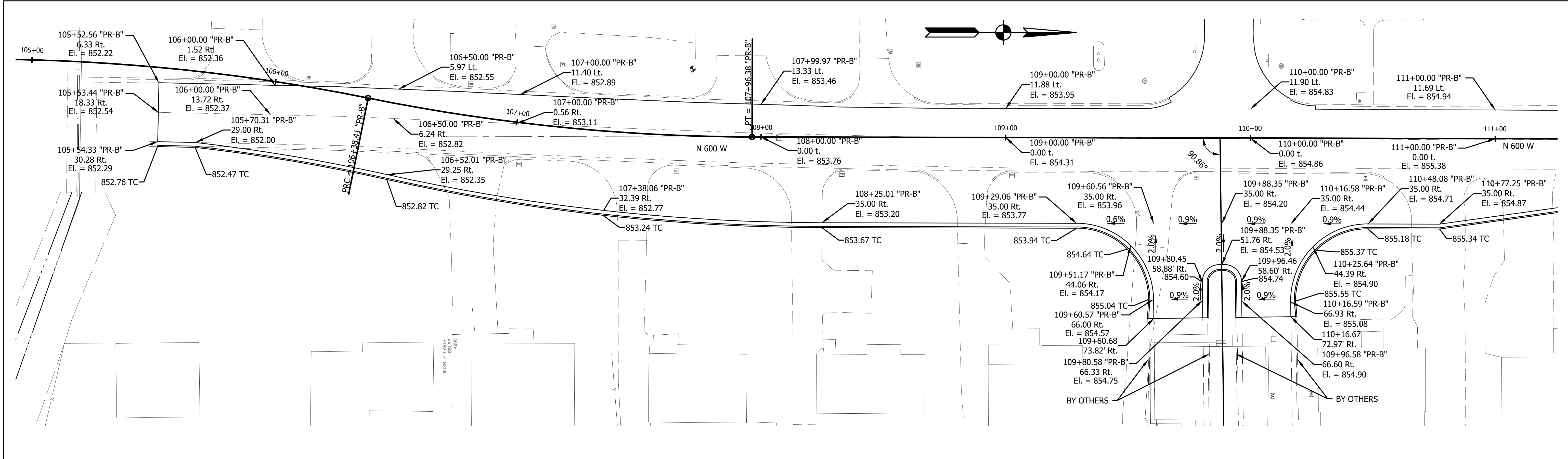
8365 Keystone Crossing, Suite 201, Indianapolis, IN. 46240 (317) 202-0864

RECOMMENDED FOR APPROVAL		XX/XX/2023	
DESIGN ENGINEER		DATE	
DESIGNED: DH	DRAWN: DH		
CHECKED: JTR	CHECKED: JTR		

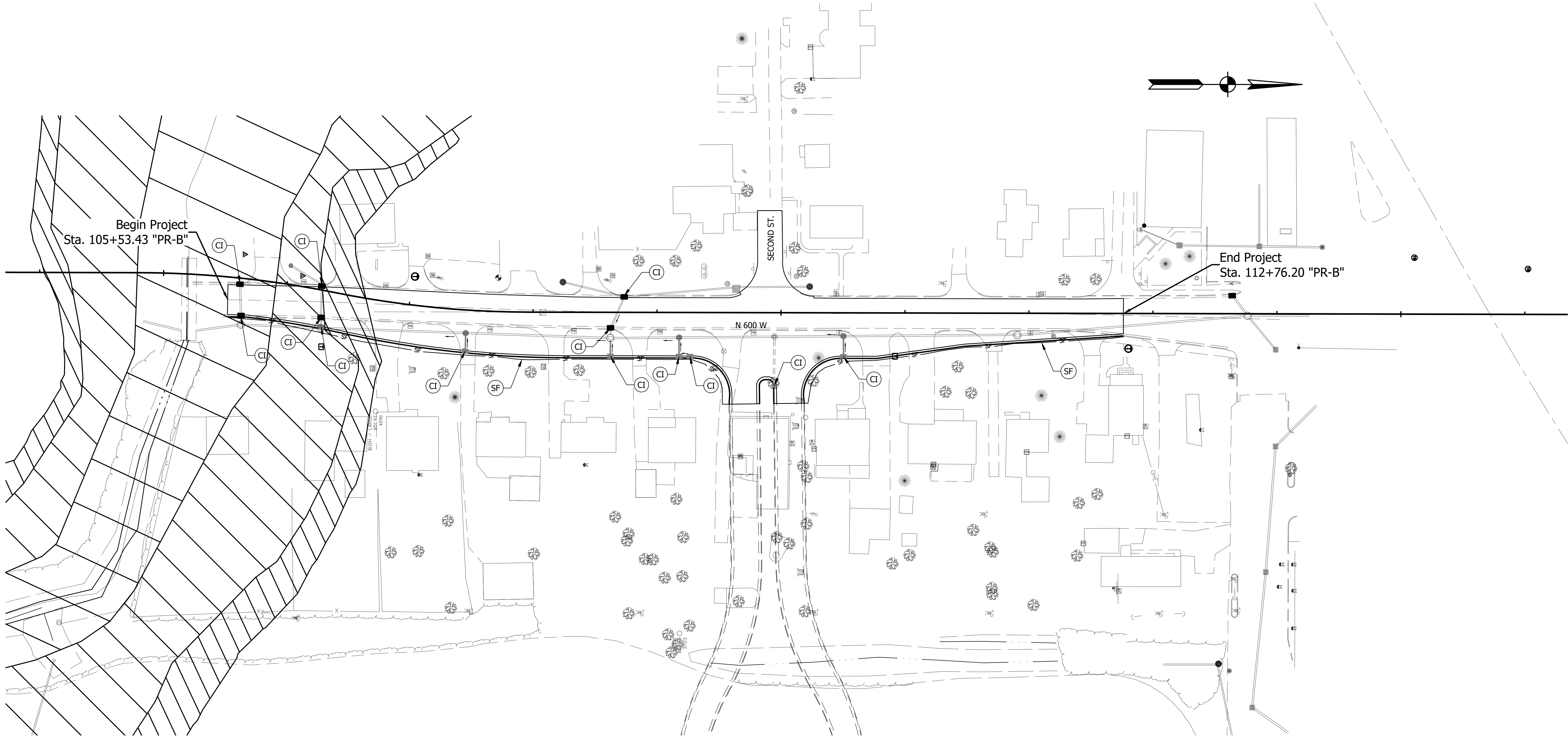
TOWN OF MCCORDSVILLE		BRIDGE FILE	
1" = 20'		N/A	
VERTICAL SCALE		DESIGNATION	
N/A		--	
SURVEY BOOK		SHEETS	
		9	of 22
CONTRACT		PROJECT	
--		--	

PROFILE - LINE "PR-B"  
STA. 110+00.00 TO STA. 116+00.00






Z:\2\2022\20271P-TOWN OF MCCORDSVILLE, INTERSECTION IMPROVEMENT, BROADWAY & CR 600\DWG\2ND ST INTERSECTION\20271P-2ND ST-SPE.DWG



Z:\2022\20271P-TOWN OF MCCORDSVILLE, INTERSECTION IMPROVEMENT, BROADWAY & CR 600.DWG\2ND ST INTERSECTION\20271P-2ND ST-EC.DWG



LEGEND

-  TEMPORARY SILT FENCE
-  TEMPORARY EROSION & SEDIMENT CONTROL, CURB INLET PROTECTION
-  TEMPORARY EROSION & SEDIMENT CONTROL, CULVERT PIPE PROTECTION
-  TEMPORARY EROSION & SEDIMENT CONTROL, DROP INLET PROTECTION
-  TEMPORARY CHECK DAM, REVETMENT RIPRAP

**A&F ENGINEERING**  
Transportation & Site Engineering  
Creating Order Since 1966  
8365 Keystone Crossing, Suite 201, Indianapolis, IN. 46240 (317) 202-0864

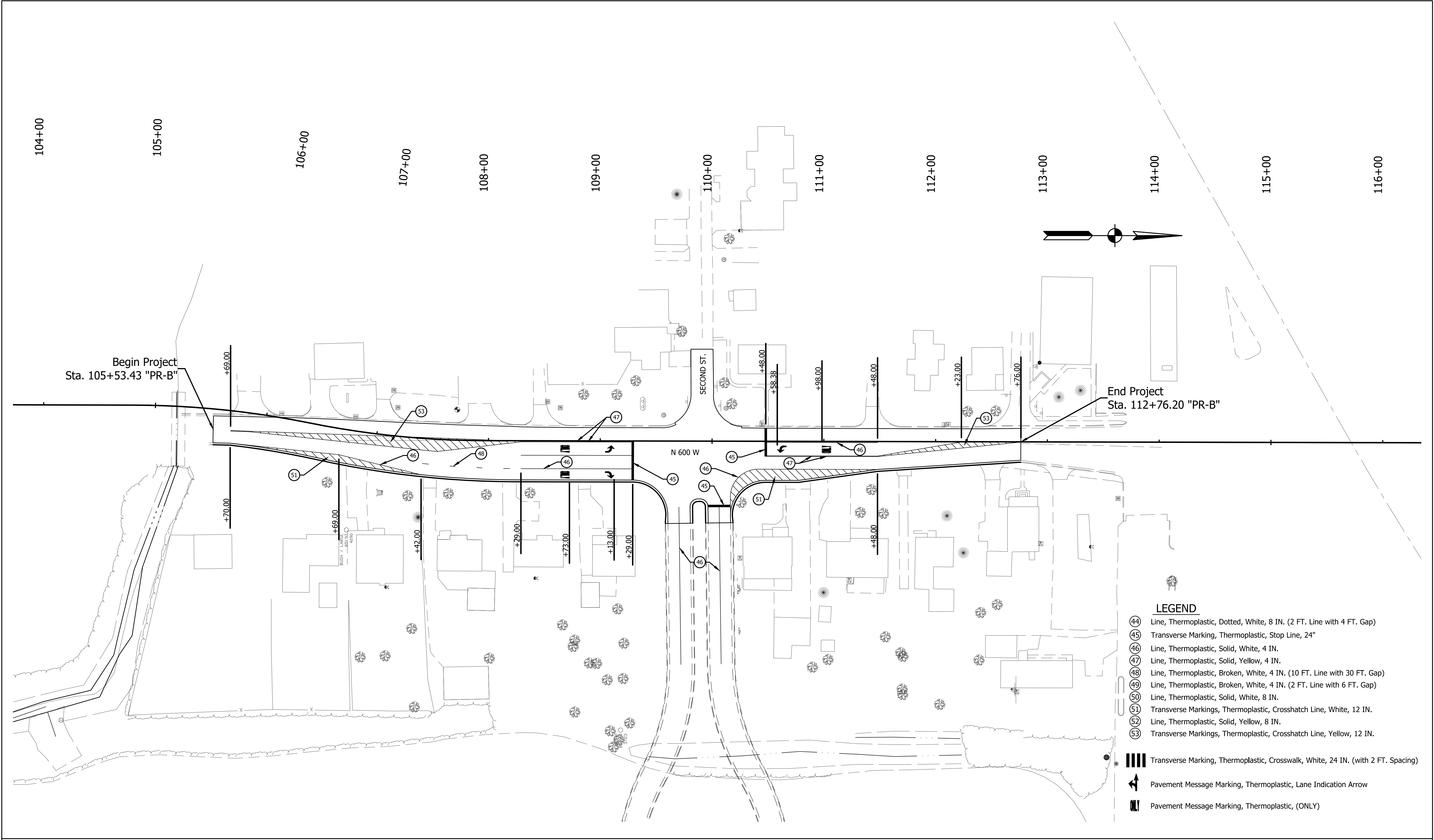
RECOMMENDED FOR APPROVAL _____		XX/XX/2023 DATE	
DESIGNED: _____		DRAWN: _____	
DH		DH	
CHECKED: _____		CHECKED: _____	
JTR		JTR	

TOWN OF MCCORDSVILLE

EROSION CONTROL

HORIZONTAL SCALE 1" = 40'	BRIDGE FILE N/A		
VERTICAL SCALE N/A	DESIGNATION --		
SURVEY BOOK	SHEETS		
	11	of	22
CONTRACT --	PROJECT --		

Z:\2022\20271P-TOWN OF MCCORDSVILLE, INTERSECTION IMPROVEMENT, BROADWAY & CR 600\DWG\2ND ST INTERSECTION\22071P-2ND ST-PM.DWG



**LEGEND**

- (44) Line, Thermoplastic, Dotted, White, 8 IN. (2 FT. Line with 4 FT. Gap)
- (45) Transverse Marking, Thermoplastic, Stop Line, 24"
- (46) Line, Thermoplastic, Solid, White, 4 IN.
- (47) Line, Thermoplastic, Solid, Yellow, 4 IN.
- (48) Line, Thermoplastic, Broken, White, 4 IN. (10 FT. Line with 30 FT. Gap)
- (49) Line, Thermoplastic, Broken, White, 4 IN. (2 FT. Line with 6 FT. Gap)
- (50) Line, Thermoplastic, Solid, White, 8 IN.
- (51) Transverse Markings, Thermoplastic, Crosshatch Line, White, 12 IN.
- (52) Line, Thermoplastic, Solid, Yellow, 8 IN.
- (53) Transverse Markings, Thermoplastic, Crosshatch Line, Yellow, 12 IN.
- |||| Transverse Marking, Thermoplastic, Crosswalk, White, 24 IN. (with 2 FT. Spacing)
- Pavement Message Marking, Thermoplastic, Lane Indication Arrow
- ||| Pavement Message Marking, Thermoplastic, (ONLY)



**A&F ENGINEERING**  
Transportation & Site Engineering  
Creating Order Since 1966  
8365 Keystone Crossing, Suite 201, Indianapolis, IN. 46240 (317) 202-0864

RECOMMENDED FOR APPROVAL _____		XX/XX/2023 DATE _____	
DESIGNED: _____		DRAWN: _____	
CHECKED: _____		CHECKED: _____	

TOWN OF MCCORDSVILLE

PAVEMENT MARKING DETAILS

HORIZONTAL SCALE 1" = 40'	BRIDGE FILE N/A		
VERTICAL SCALE N/A	DESIGNATION --		
SURVEY BOOK	SHEETS		
	12	of	22
CONTRACT --	PROJECT --		

Z:\2022\22071P-TOWN OF MCCORDSVILLE, INTERSECTION IMPROVEMENT, BROADWAY & CR 600\DWG\2ND ST INTERSECTION\22071P-2ND ST-TS.DWG

NOTES:

1. Pavement Markings Are For Reference Only. See Pavement Marking Sheet For Details.
- 2.

CR 600 W

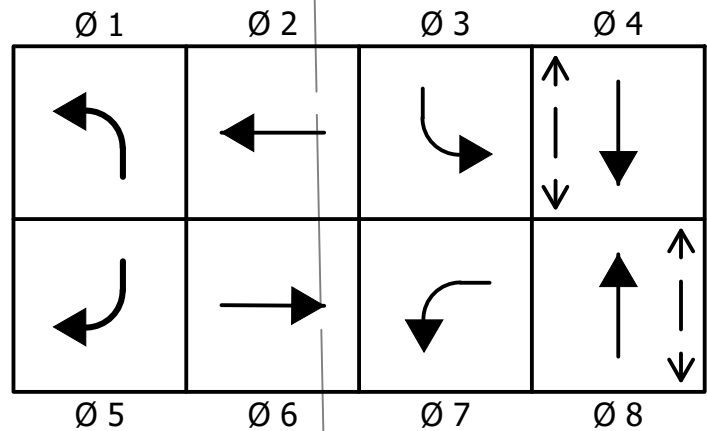
Second St

Main St

LEFT TURN  
YIELD ON  
FLASHING  
YELLOW  
ARROW

LOOP TAGGING TABLE	
LANE	TAG NUMBER
NL	NL7 - 1, 2, 3, 4
WL	WL2 - 1, 2, 3, 4
WA	WA2 - 1, 2, 3, 4
SL	SL3 - 1, 2, 3, 4
EA	EA6 - 1, 2, 3, 4

PHASE DIAGRAM



LEGEND

- 1-Way, 3-Section (12" Red LED, 12" Amber LED, 12" Green LED) Signal Indication
- 1-Way, 4-Section (12" Red Arrow LED, 12" Amber Arrow LED, 12" Green Arrow LED) Signal Indication
- Controller, 8 Phase, TS2 Type 1, In "P-1" Cabinet On "P-1" Foundation
- Mast Arm Pole And Foundation
- Pedestrian Indication
- Handhole
- Detector Housing

- Overhead Street Sign, Single Mount
- Overhead Street Name Sign, Double Mount
- Pedestal on Type "A" Foundation
- 6' Loop Detection
- 2" PVC Conduit
- R3-5(L) Sign (30x36)
- R3-5(R) Sign (30x36)
- R10-Y5a Sign (30x36)



8365 Keystone Crossing, Suite 201, Indianapolis, IN. 46240 (317) 202-0864

RECOMMENDED  
FOR APPROVAL \_\_\_\_\_  
DESIGN ENGINEER DATE

DESIGNED: MIK DRAWN: MIK  
CHECKED: JTR CHECKED: JTR

TOWN OF MCCORDSVILLE

TRAFFIC SIGNAL INSTALLATION

HORIZONTAL SCALE 1" = 20'	BRIDGE FILE N/A
VERTICAL SCALE N/A	DESIGNATION --
SURVEY BOOK	SHEETS 13 of 22
CONTRACT --	PROJECT --

[illegible]

Z:\2022\202071P-TOWN OF MCCORDSVILLE, INTERSECTION IMPROVEMENT, BROADWAY & CR 600\DWG\2ND ST INTERSECTION\22071P-2ND ST-UNDERDRAIN TABLE.DWG

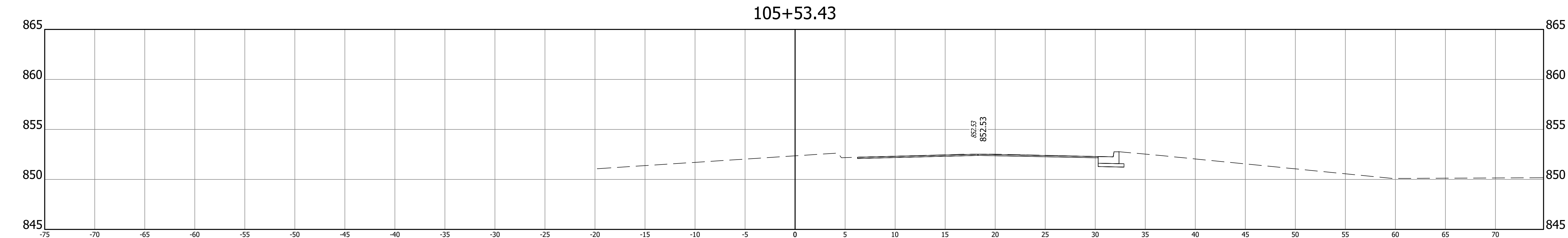
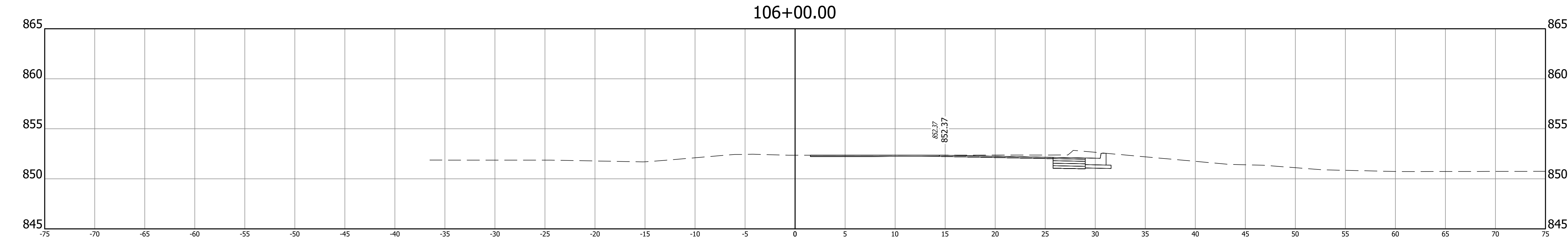
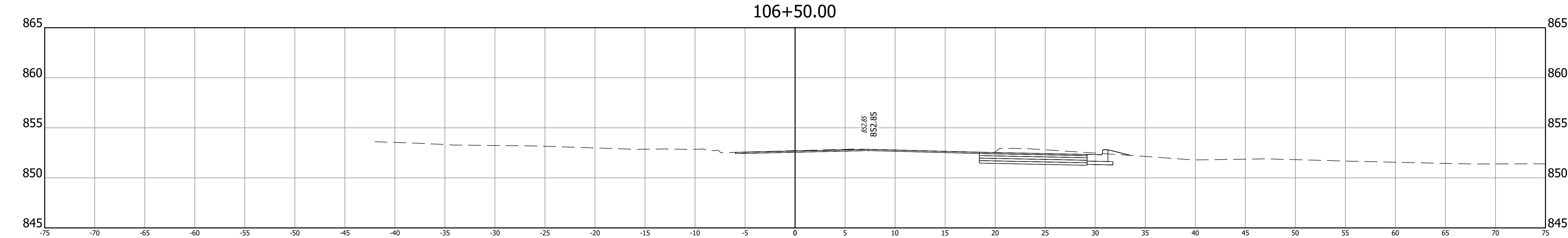
UNDERDRAIN TABLE																											
UNDERDRAIN PIPE											OUTLET PIPE										OUTLET PROTECTORS						REMARKS
Underdrain Pipe Limits	Type 4 Pipe		Geotextile for Underdrains	Aggregate for Underdrains	HMA for Underdrains	Special Grade	Flow Line Elevation @ Underdrain Pipe Limit	Outlet Pipe Required	Connect Underdrain Pipe to Structure No. ____	Structure Invert Elevation	45 Degree Elbows Required (1 or 2)	6 inch Outlet Pipe	Outlet Station	Outlet Elevation	Outlet at Outlet Protector No. ____	Ditch Flow Line Elevation at Outlet Protector	Connect Outlet Pipe to Structure No. ____	Structure Invert Elevation	B Borrow for Structure Backfill	HMA for Underdrains	Outlet Protector No. ____	Outlet Protector Type	Location				
	4 inch	6 inch																					Outside Left	Median Left	Median Right	Outside Right	
	(ft)	(ft)						(yd2)				(yd3)							(ton)	%							
Line "PR-B" RT																											
105+65.89		68	64.1	6.1					12	848.34																	
106+33.71																											
106+33.71		114	107.3	10.2					17	843.60																	
107+47.33																											
107+47.33		115	108.7	10.4					19	844.55																	
108+62.47																											
108+62.47		55	52.3	5.0					24	845.01																	
109+17.83																											
109+17.83		9	8.3	0.8					26	845.40																	
109+26.65																											
109+26.65		57	53.8	5.1					27	845.63																	
110+50.49		285	237.5	25.7					33	846.02																	
Subtotal =		703	632	63																							

Outlet Station = Location of Outlet Pipe Outlet Protector or Connection to Drainage Structure

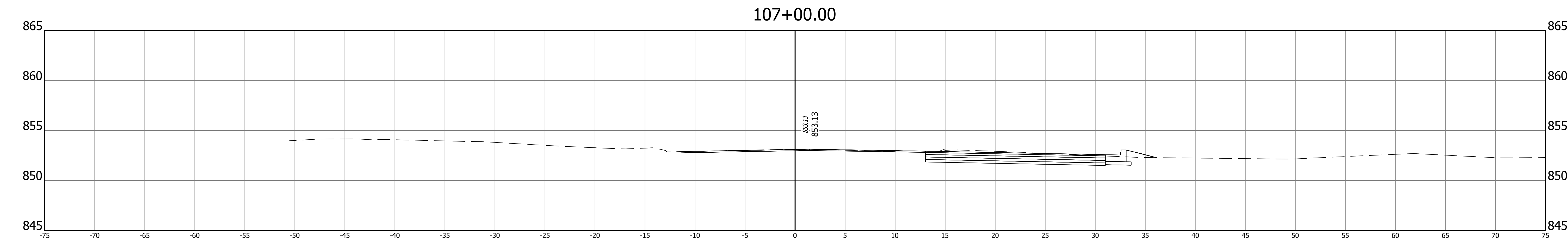
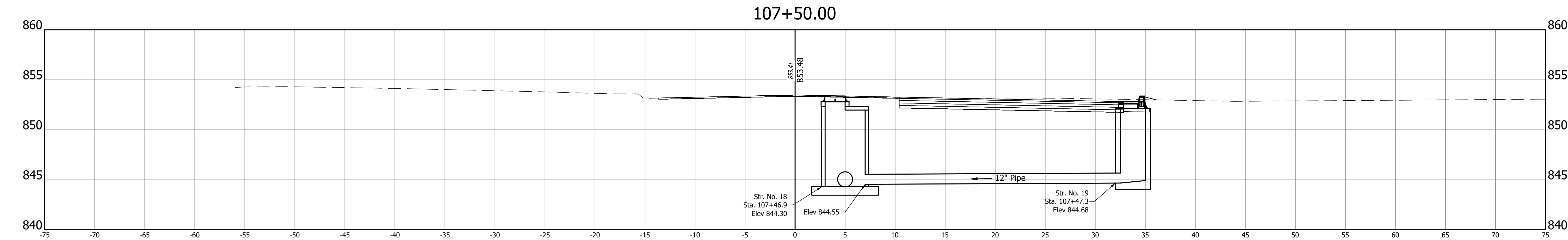
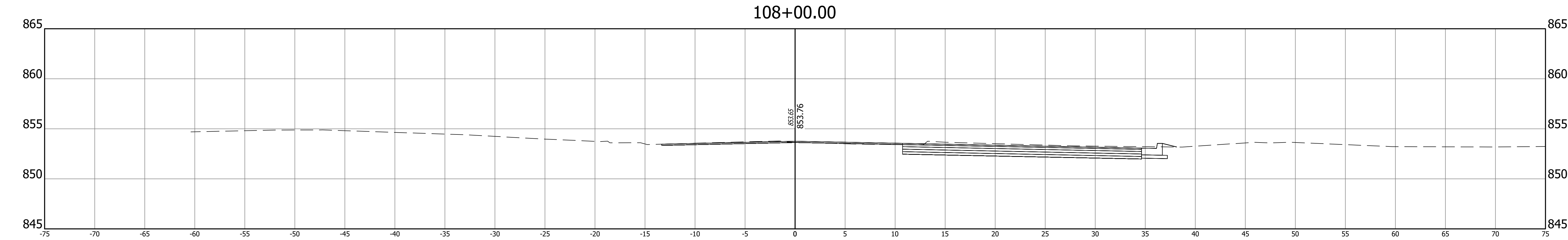
[illegible]

 <b>A&amp;F ENGINEERING</b> Transportation & Site Engineering Creating Order Since 1966 8365 Keystone Crossing, Suite 201, Indianapolis, IN. 46240 (317) 202-0864		RECOMMENDED FOR APPROVAL _____ XX/XX/2023 <div style="text-align: right;">DESIGN ENGINEER      DATE</div>	TOWN OF MCCORDSVILLE	HORIZONTAL SCALE _____ BRIDGE FILE N/A _____ N/A VERTICAL SCALE _____ DESIGNATION N/A _____ --	
		DESIGNED: _____ DH      DRAWN: _____ DH <hr/> CHECKED: _____ JTR      CHECKED: _____ JTR		STRUCTURE DATA TABLE	SURVEY BOOK _____ SHEETS <div style="text-align: right;">16 of 22</div> CONTRACT _____ PROJECT -- _____ --

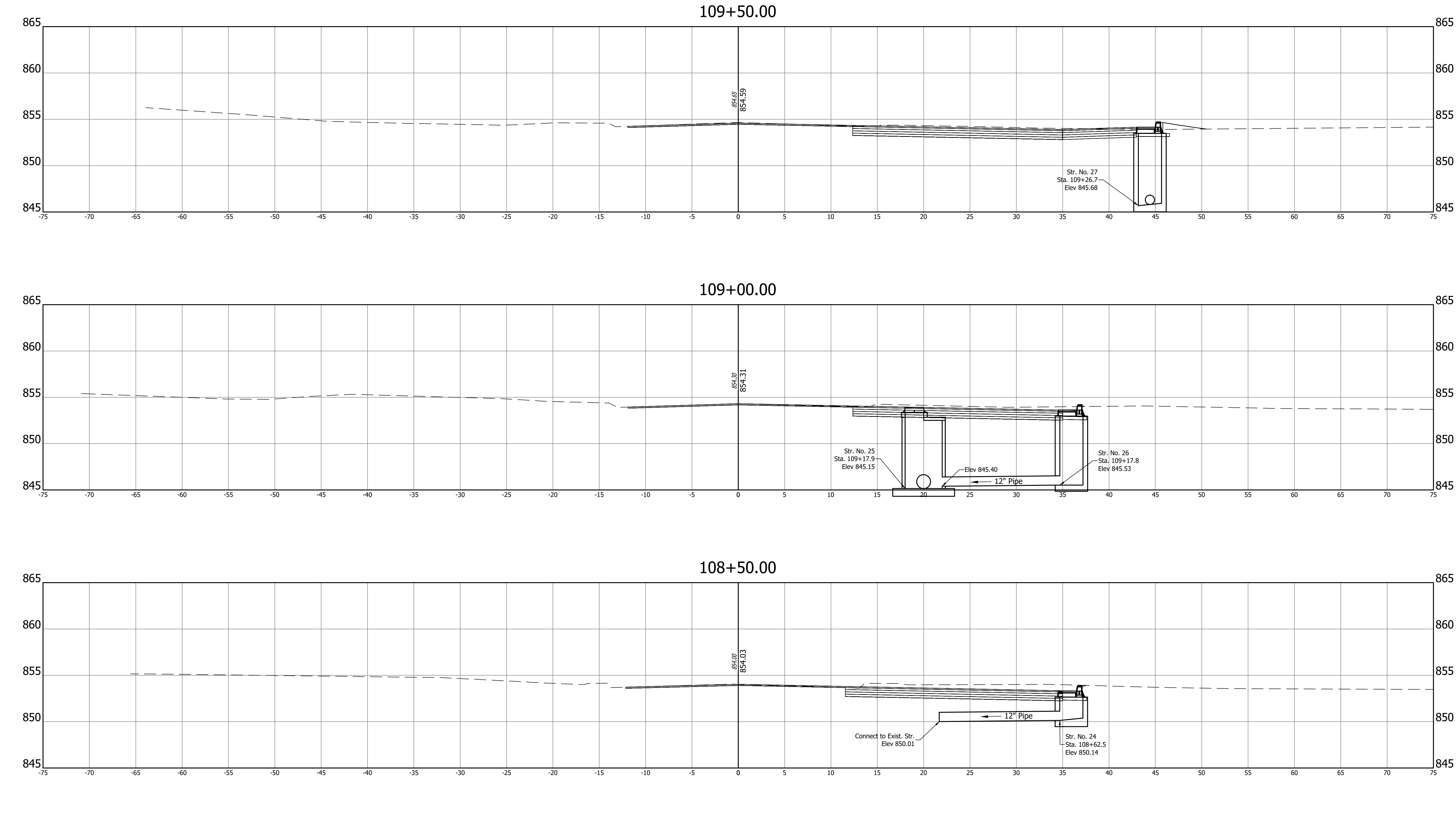
Z:\2022\22071P-TOWN OF MCCORDSVILLE, INTERSECTION IMPROVEMENT, BROADWAY & CR 600\DWG\2ND ST INTERSECTION\22071P-2ND ST-CORRIDOR.DWG



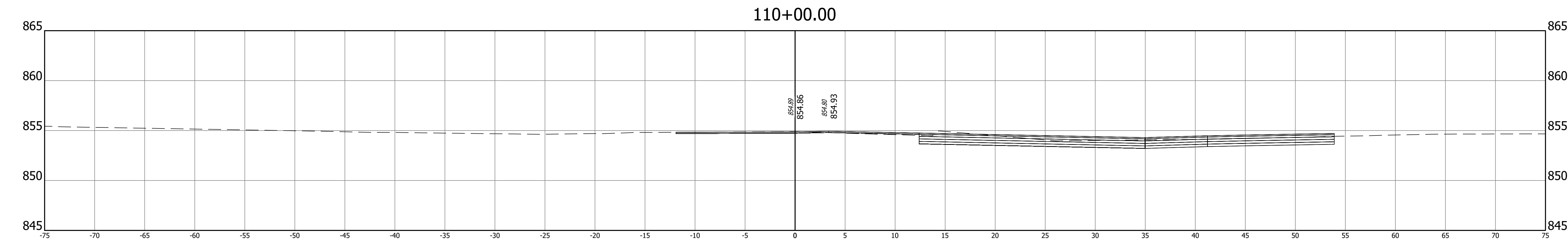
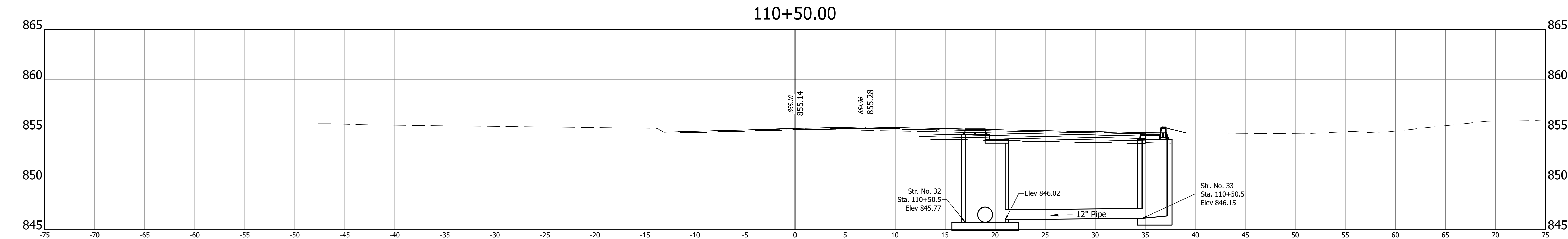
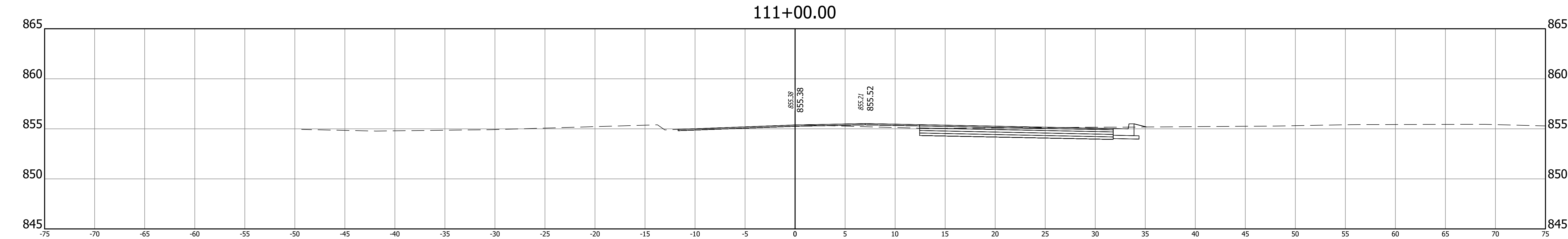
Z:\2022\22071P-TOWN OF MCCORDSVILLE, INTERSECTION IMPROVEMENT, BROADWAY & CR 600\DWG\2ND ST INTERSECTION\22071P-2ND ST-CORRIDOR.DWG



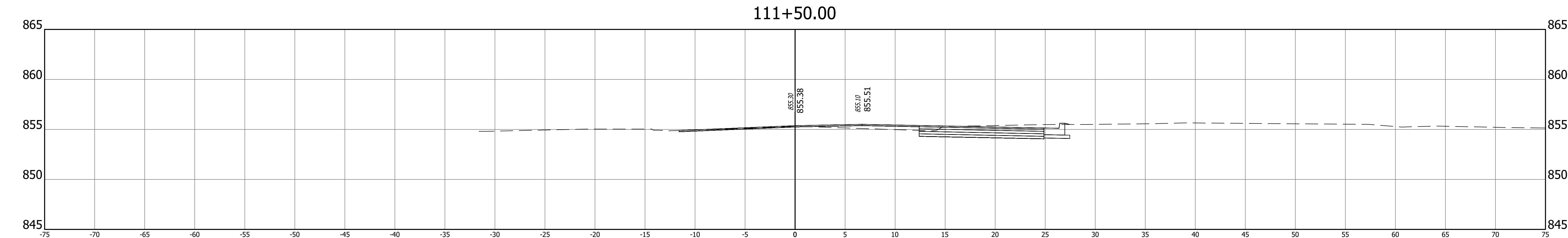
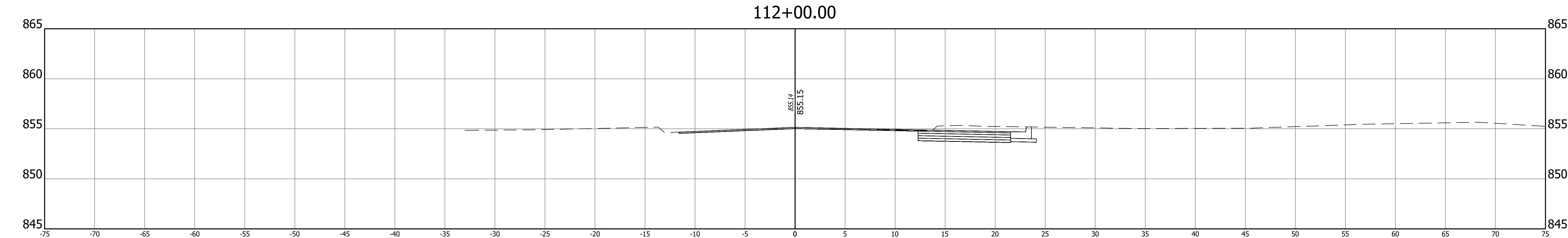
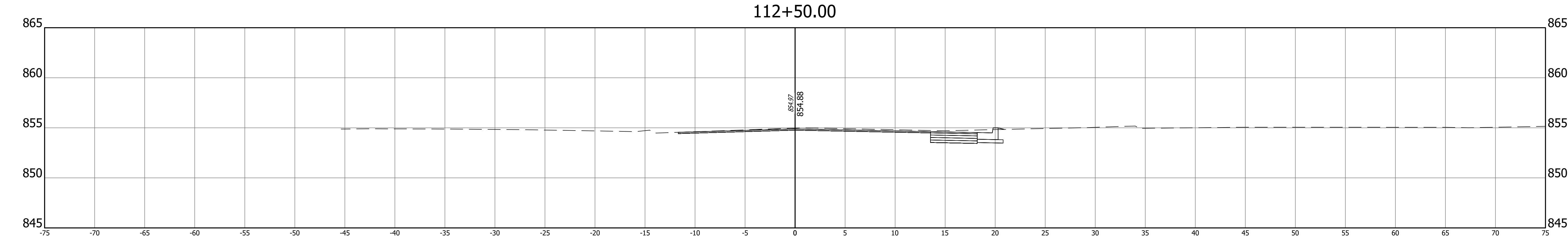
Z:\2022\22071P-TOWN OF MCCORDSVILLE, INTERSECTION IMPROVEMENT, BROADWAY & CR 600\DWG\2ND ST INTERSECTION\22071P-2ND ST-CORRIDOR.DWG



Z:\2022\22071P-TOWN OF MCCORDSVILLE, INTERSECTION IMPROVEMENT, BROADWAY & CR 600\DWG\2ND ST INTERSECTION\22071P-2ND ST-CORRIDOR.DWG



Z:\2022\22071P-TOWN OF MCCORDSVILLE, INTERSECTION IMPROVEMENT, BROADWAY & CR 600\DWG\2ND ST INTERSECTION\22071P-2ND ST-CORRIDOR.DWG





**A&F ENGINEERING**

Transportation & Site Engineering

Creating Order Since 1966

8365 Keystone Crossing, Suite 201, Indianapolis, IN. 46240 (317) 202-0864

RECOMMENDED  
FOR APPROVAL \_\_\_\_\_ XX/XX/2023  
DESIGN ENGINEER DATE

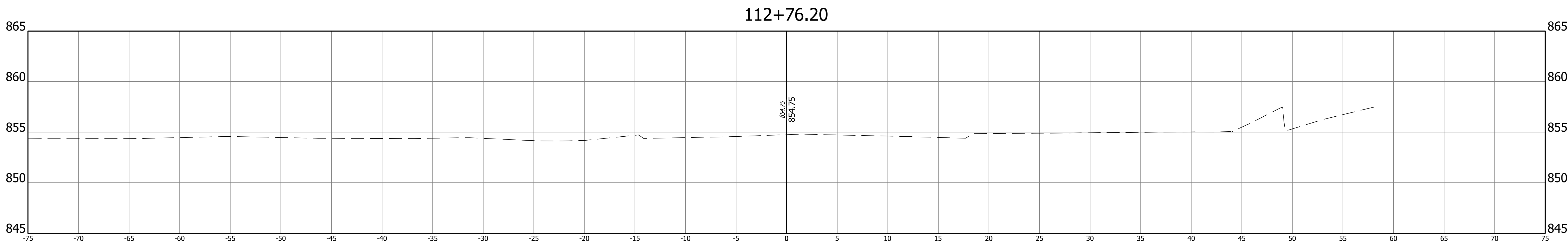
DESIGNED: \_\_\_\_\_ DH DRAWN: \_\_\_\_\_ DH  
CHECKED: \_\_\_\_\_ JTR CHECKED: \_\_\_\_\_ JTR

TOWN OF MCCORDSVILLE

CROSS SECTIONS  
LINE "PR-B"

HORIZONTAL SCALE	BRIDGE FILE	
1" = 5'	N/A	
VERTICAL SCALE	DESIGNATION	
1" = 5'	--	
SURVEY BOOK	SHEETS	
	21	of 22
CONTRACT	PROJECT	
--	--	

Z:\2022\22071P-TOWN OF MCCORDSVILLE, INTERSECTION IMPROVEMENT, BROADWAY & CR 600\DWG\2ND ST INTERSECTION\22071P-2ND ST-CORRIDOR.DWG





**A&F ENGINEERING**

Transportation & Site Engineering

Creating Order Since 1966

8365 Keystone Crossing, Suite 201, Indianapolis, IN. 46240 (317) 202-0864

RECOMMENDED  
FOR APPROVAL \_\_\_\_\_ XX/XX/2023  
DESIGN ENGINEER DATE

DESIGNED: \_\_\_\_\_ DH DRAWN: \_\_\_\_\_ DH  
CHECKED: \_\_\_\_\_ JTR CHECKED: \_\_\_\_\_ JTR

TOWN OF MCCORDSVILLE

CROSS SECTIONS  
LINE "PR-B"

HORIZONTAL SCALE	BRIDGE FILE		
1" = 5'	N/A		
VERTICAL SCALE	DESIGNATION		
1" = 5'	--		
SURVEY BOOK	SHEETS		
	22	of	22
CONTRACT	PROJECT		
--	--		