

THIS INSTRUMENT PREPARED BY:

MICHAEL G. JUDT  
HMC ENGINEERING  
135 N. PENNSYLVANIA STREET, SUITE 2800  
INDIANAPOLIS, INDIANA 46204  
PHONE: (317) 347-3663

DEVELOPED BY:  
HARTMAN CAPITAL, LLC  
505 S. FIFTH STREET  
CHAMPAIGN, ILLINOIS 61820  
PHONE: (217) 898-3366

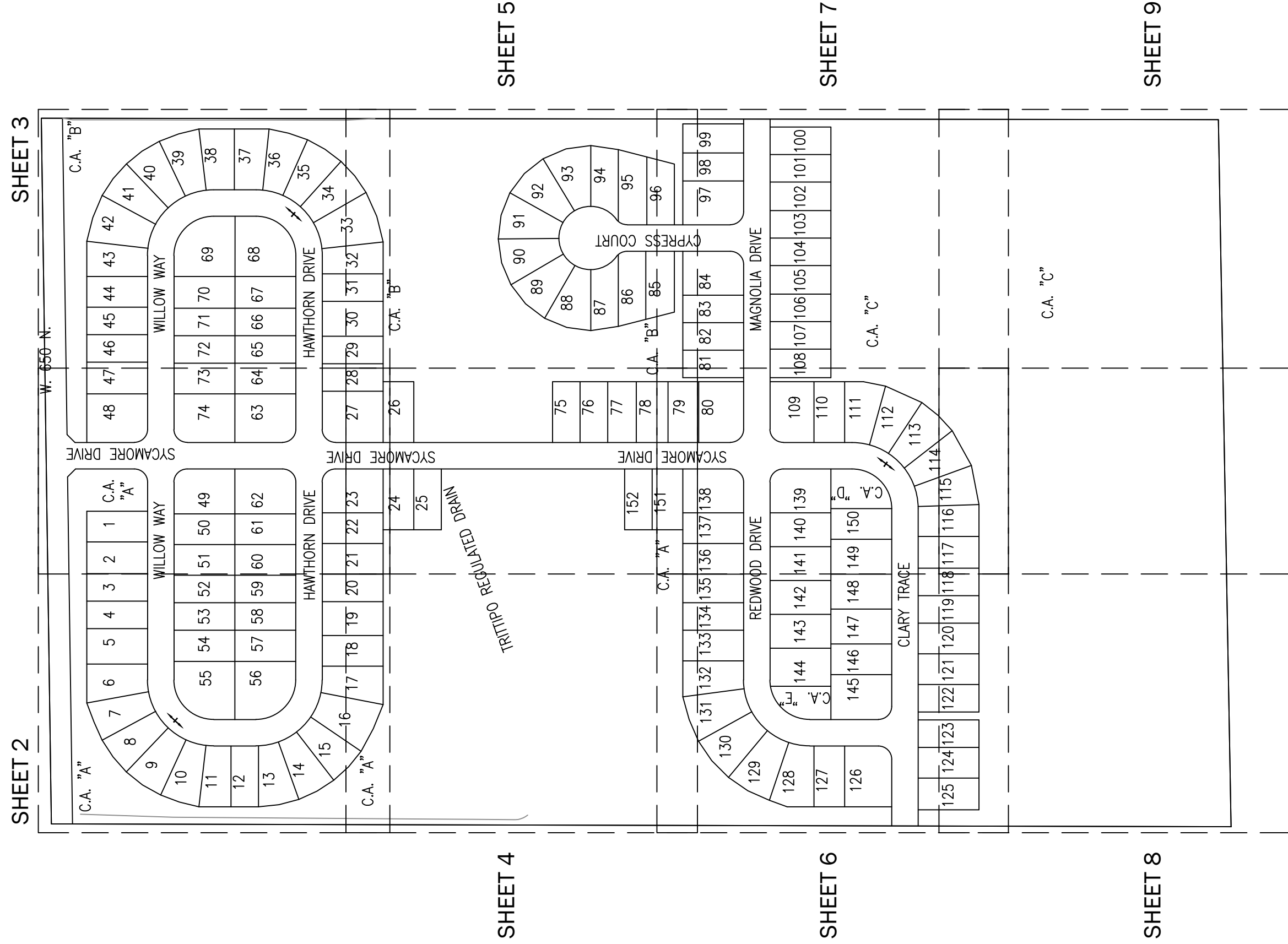
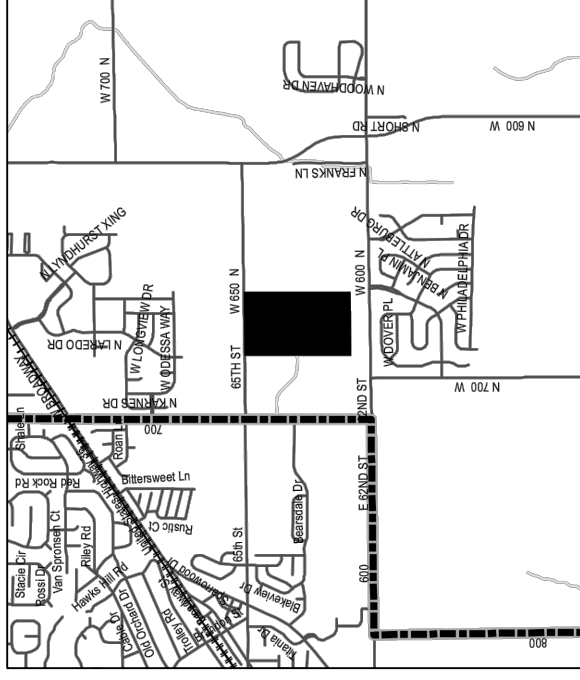
ZONING: R2.5

Curve Table				
Curve #	Length	Radius	Chord Length	Delta
C-1	39.27'	25.00'	N45°00'07"E	90°00'00"
C-2	39.27'	25.00'	S44°59'53"E	90°00'00"
C-3	39.27'	25.00'	S45°00'07"W	90°00'00"
C-4	39.27'	25.00'	N44°59'53"W	90°00'00"
C-5	117.81'	75.00'	N44°59'53"W	90°00'00"
C-6	157.08'	100.00'	141.42'	90°00'00"
C-7	196.35'	125.00'	176.78'	90°00'00"
C-8	117.81'	75.00'	106.07'	90°00'00"
C-9	157.08'	100.00'	141.42'	90°00'00"
C-10	196.35'	125.00'	176.78'	90°00'00"
C-11	39.27'	25.00'	S45°00'07"W	90°00'00"
C-12	39.27'	25.00'	S45°00'07"W	90°00'00"
C-13	39.27'	25.00'	N45°00'07"E	90°00'00"
C-14	39.27'	25.00'	S44°59'53"E	90°00'00"
C-15	117.81'	75.00'	106.07'	90°00'00"
C-16	157.08'	100.00'	141.42'	90°00'00"
C-17	196.35'	125.00'	176.78'	90°00'00"
C-18	117.81'	75.00'	106.07'	90°00'00"
C-19	157.08'	100.00'	141.42'	90°00'00"
C-20	196.35'	125.00'	176.78'	90°00'00"
C-21	39.27'	25.00'	S45°00'07"E	90°00'00"
C-22	39.27'	25.00'	S45°00'07"E	90°00'00"
C-23	39.27'	25.00'	S45°00'07"W	90°00'00"
C-24	39.27'	25.00'	N44°59'53"W	90°00'00"
C-25	39.27'	25.00'	S45°00'07"E	90°00'00"
C-26	39.27'	25.00'	S44°59'53"E	90°00'00"
C-27	23.55'	25.00'	22.69'	53°58'05"
C-28	301.53'	80.00'	70.59'	287°56'10"
C-29	23.55'	25.00'	22.69'	53°58'05"
C-30	117.81'	75.00'	106.07'	90°00'00"
C-31	157.08'	100.00'	141.42'	90°00'00"
C-32	196.35'	125.00'	176.78'	90°00'00"
C-33	39.27'	25.00'	S45°00'07"E	90°00'00"
C-34	39.27'	25.00'	S44°59'53"E	90°00'00"
C-35	117.81'	75.00'	106.07'	90°00'00"
C-36	157.08'	100.00'	141.42'	90°00'00"
C-37	196.35'	125.00'	176.78'	90°00'00"

PLOT DATE: SEP 20, 2023 BY: IDAVIS FILE NAME: W:\Hartman Capital LLC\2022-016-A - Hartman Primary Plat\Design\CAD\20216-A-Xbase.dwg, Layout: PLAT 1-2 Plot Time: 9:34am

# MERIDIAN HOMES AT SYCAMORE DRIVE SECONDARY PLAT

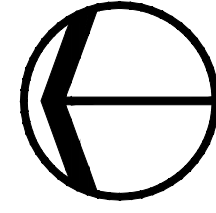
VERNON TOWNSHIP, HANCOCK COUNTY, INDIANA  
(PART OF SECTION 35, TOWNSHIP 17 NORTH, RANGE 5 EAST)



Site Map  
SCALE: 1" = 200'

SEE SHEET 10 FOR LAND DESCRIPTION

SHEET 1 OF 10



Assumed North  
Scale: 1" = 50'

# MERIDIAN HOMES AT SYCAMORE DRIVE SECONDARY PLAT

VERNON TOWNSHIP, HANCOCK COUNTY, INDIANA  
(PART OF SECTION 35, TOWNSHIP 17 NORTH, RANGE 5 EAST)

THIS INSTRUMENT PREPARED BY:

MICHAEL G. JUDT  
HMC ENGINEERING  
135 N. PENNSYLVANIA STREET, SUITE 2800  
INDIANAPOLIS, INDIANA 46204  
PHONE: (317) 347-3663

DEVELOPED BY:  
HARTMAN CAPITAL, LLC  
505 S. FIFTH STREET  
CHAMPAIGN, ILLINOIS 61820  
PHONE: (217) 898-3366

POINT OF BEGINNING  
NW CORNER OF E 1/2 OF SW 1/4  
SEC. 35-T17N-R5E  
MAG NAIL W/ WISHER STAMPED  
HMC ENGINEERING FIRM #0114

SUBDIVISION MONUMENTS

- DENOTES A 5/8" DIA. ALUMINUM MONUMENT 6" LONG WITH 1 1/2" DIA. ALUMINUM CAP STAMPED "HMC ENGINEERING FIRM #0114" SET FLUSH WITH THE FINISHED STREET SURFACE
- DENOTES A 5/8" REBAR 30" LONG WITH CAP STAMPED "HMC ENGINEERING FIRM #0114" TO BE SET AT LOT CORNERS, INCLUDING BEGINNING AND ENDING OF CURVES AND THE INTERSECTION OF LINES.
- ☒ DENOTES 4"x4" CONCRETE MONUMENT SET VERTICALLY IN PLACE WITH A 5/8" REBAR WITH CAP STAMPED "HMC ENGINEERING FIRM #0114" SET FLUSH

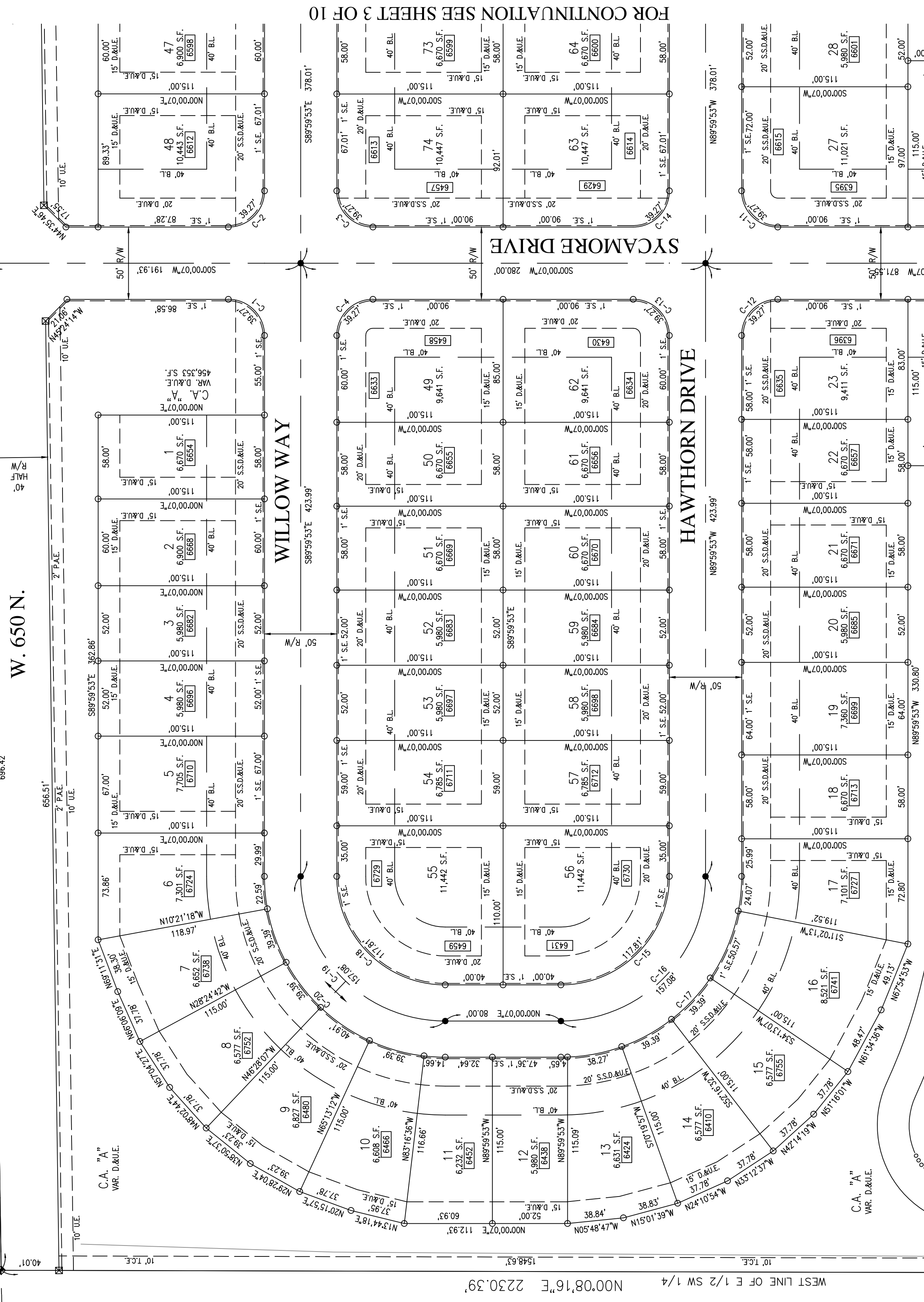
• MONUMENT FOUND AS NOTED

## LEGEND

RIGHT-OF-WAY LINE  
LOT LINE  
BOUNDARY LINE  
EASEMENT LINE  
SETBACK LINE  
CENTER LINE

## LEGEND

25 LOT NUMBER  
D.E. DRAINAGE EASEMENT  
D.A.E. DRAINAGE & UTILITY EASEMENT  
S.S.D.A.E. SANITARY AND UTILITY EASEMENT  
L.E. LANDSCAPE EASEMENT  
B.S.L. BUILDING SETBACK LINE  
P.A.E. PEDESTRIAN ACCESS EASEMENT  
T.C.E. TREE CONSERVATION EASEMENT  
P.C.A. PUBLIC COMMON AREA  
S.F. SQUARE FEET  
AC ACRES  
R RADIUS  
S.E. SIDEWALK EASEMENT  
VARIABLE



FOR CONTINUATION SEE SHEET 4 OF 10

SEE SHEET 1 FOR CURVE TABLE

SEE SHEET 10 FOR LAND DESCRIPTION

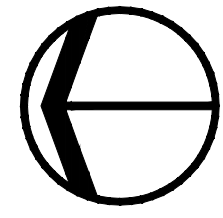
SHEET 2 OF 10

PLOT DATE: SEP 20, 2023 BY: IDAVIS FILE NAME: W:\Hartman Capital LLC\2022-016-A - Hartman Primary Plat\Design\CAD\20216-A-Xbase.dwg, Layout: PLAT 1-2 Plot Time: 9:34am

THIS INSTRUMENT PREPARED BY:

MICHAEL G. JUDT  
HMC ENGINEERING  
135 N. PENNSYLVANIA STREET, SUITE 2800  
INDIANAPOLIS, INDIANA 46204  
PHONE: (317) 347-3663

DEVELOPED BY:  
HARTMAN CAPITAL, LLC  
505 S. FIFTH STREET  
CHAMPAIGN, ILLINOIS 61820  
PHONE: (217) 898-3366



Assumed North

Scale: 1" = 50'

- DENOTES 1/4" DIA. ALUMINUM MONUMENT 6" LONG WITH 1/4" DIA. ALUMINUM CAP STAMPED "HMC ENGINEERING FIRM #0114" SET FLUSH WITH THE FINISHED STREET SURFACE
- DENOTES 1/4" DIA. REBAR 30" LONG WITH CAP STAMPED "HMC ENGINEERING FIRM #0114" SET FLUSH WITH THE FINISHED STREET SURFACE TO BE SET AT CURVES, INCLUDING BEGINNING AND ENDING OF CURVES AND THE INTERSECTION OF LINES.
- ⊠ DENOTES 4"x4" CONCRETE MONUMENT SET VERTICALLY IN PLACE WITH A 3/8" REBAR WITH CAP STAMPED "HMC ENGINEERING FIRM #0114" SET FLUSH
- MONUMENT FOUND AS NOTED

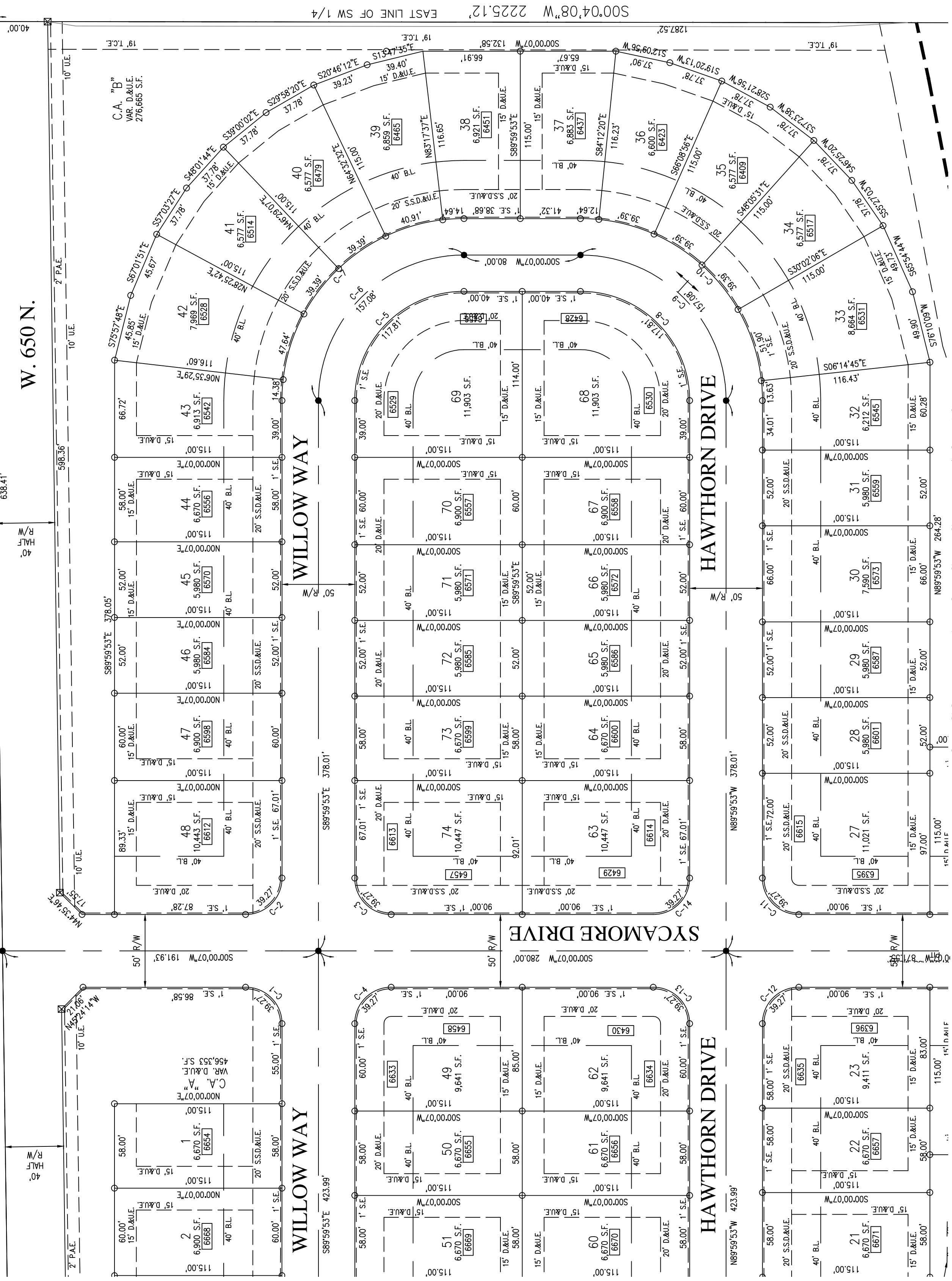
LEGEND

- RIGHT-OF-WAY LINE
- LOT LINE
- BOUNDARY LINE
- EASEMENT LINE
- SETBACK LINE
- CENTERLINE
- SECTION LINE

LEGEND

- 25 LOT NUMBER
- D.E. DRAINAGE EASEMENT
- D.A.U.E. DRAINAGE & UTILITY EASEMENT
- S.S.D.A.U.E. SANITARY SEWER, DRAINAGE AND UTILITY EASEMENT
- LE LANDSCAPE EASEMENT
- P.S.L. PROTECTIVE SIDEWALK EASEMENT
- T.C.E. TREE CONSERVATION EASEMENT
- R/W RIGHT OF WAY
- C.A. COMMON AREA
- S.F. SQUARE FEET
- R. RADIUS
- S.E. SIDEWALK EASEMENT
- VAR. VARIABLE

FOR CONTINUATION SEE SHEET 2 OF 10



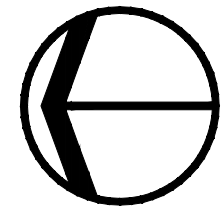
SEE SHEET 1 FOR CURVE TABLE  
SEE SHEET 10 FOR LAND DESCRIPTION

SHEET 3 OF 10

THIS INSTRUMENT PREPARED BY:

MICHAEL G. JUDT  
HMC ENGINEERING  
135 N. PENNSYLVANIA STREET, SUITE 2800  
INDIANAPOLIS, INDIANA 46204  
PHONE: (317) 347-3663

DEVELOPED BY:  
HARTMAN CAPITAL, LLC  
505 S. FIFTH STREET  
CHAMPAIGN, ILLINOIS 61820  
PHONE: (217) 898-3366



Assumed North

Scale: 1" = 50'

- DENOTES 1/4" DIA. ALUMINUM MONUMENT 6" LONG WITH 1/4" DIA. ALUMINUM CAP STAMPED "HMC ENGINEERING FIRM #0114" SET FLUSH WITH THE FINISHED STREET SURFACE
- DENOTES 1/4" DIA. REBAR 30" LONG WITH CAP STAMPED "HMC ENGINEERING FIRM #0114" SET FLUSH WITH THE FINISHED STREET SURFACE TO BE SET AT CURVES, INCLUDING BEGINNING AND ENDING OF CURVES AND THE INTERSECTION OF LINES.
- ⊠ DENOTES 4"x4" CONCRETE MONUMENT SET VERTICALLY IN PLACE WITH A 3/8" REBAR WITH CAP STAMPED "HMC ENGINEERING FIRM #0114" SET FLUSH
- MONUMENT FOUND AS NOTED

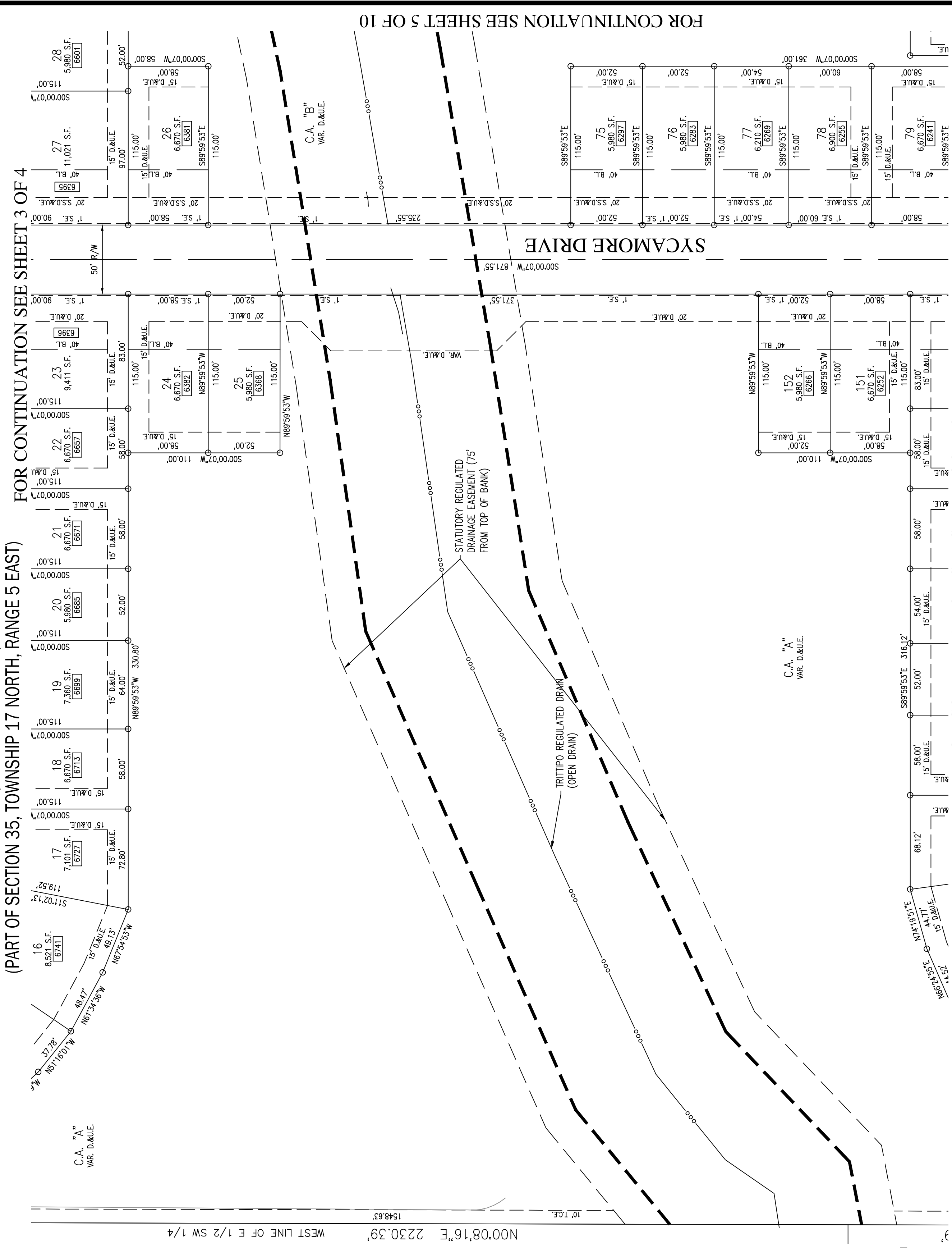
LEGEND

- RIGHT-OF-WAY LINE
- LOT LINE
- BOUNDARY LINE
- EASEMENT LINE
- SETBACK LINE
- CENTERLINE
- SECTION LINE

LEGEND

- 25 LOT NUMBER
- D.E. DRAINAGE EASEMENT
- D.A.U.E. DRAINAGE & UTILITY EASEMENT
- S.S.D.A.U.E. SANITARY SEWER, DRAINAGE AND UTILITY EASEMENT
- LE LANDSCAPE EASEMENT
- P.S.L. PROTECTIVE SIDEWALK EASEMENT
- T.C.E. TREE CONSERVATION EASEMENT
- R/W RIGHT OF WAY
- C.A. COMMON AREA
- S.F. SQUARE FEET
- R. RADIUS
- S.E. SIDEWALK EASEMENT
- VAR. VARIABLE

SAGEBROOK SUBDIVISION  
SECTION 4  
INST. #202202805



SEE SHEET 1 FOR CURVE TABLE  
SEE SHEET 10 FOR LAND DESCRIPTION

SHEET 4 OF 10

# MERIDIAN HOMES AT SYCAMORE DRIVE SECONDARY PLAT

VERNON TOWNSHIP, HANCOCK COUNTY, INDIANA  
(PART OF SECTION 35, TOWNSHIP 17 NORTH, RANGE 5 EAST)

INSTRUMENT No.:

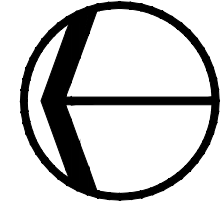
CABINET:

SLIDE:

THIS INSTRUMENT PREPARED BY:

MICHAEL G. JUDT  
HMC ENGINEERING  
135 N. PENNSYLVANIA STREET, SUITE 2800  
INDIANAPOLIS, INDIANA 46204  
PHONE: (317) 347-3663

DEVELOPED BY:  
HARTMAN CAPITAL, LLC  
505 S. FIFTH STREET  
CHAMPAIGN, ILLINOIS 61820  
PHONE: (217) 898-3366



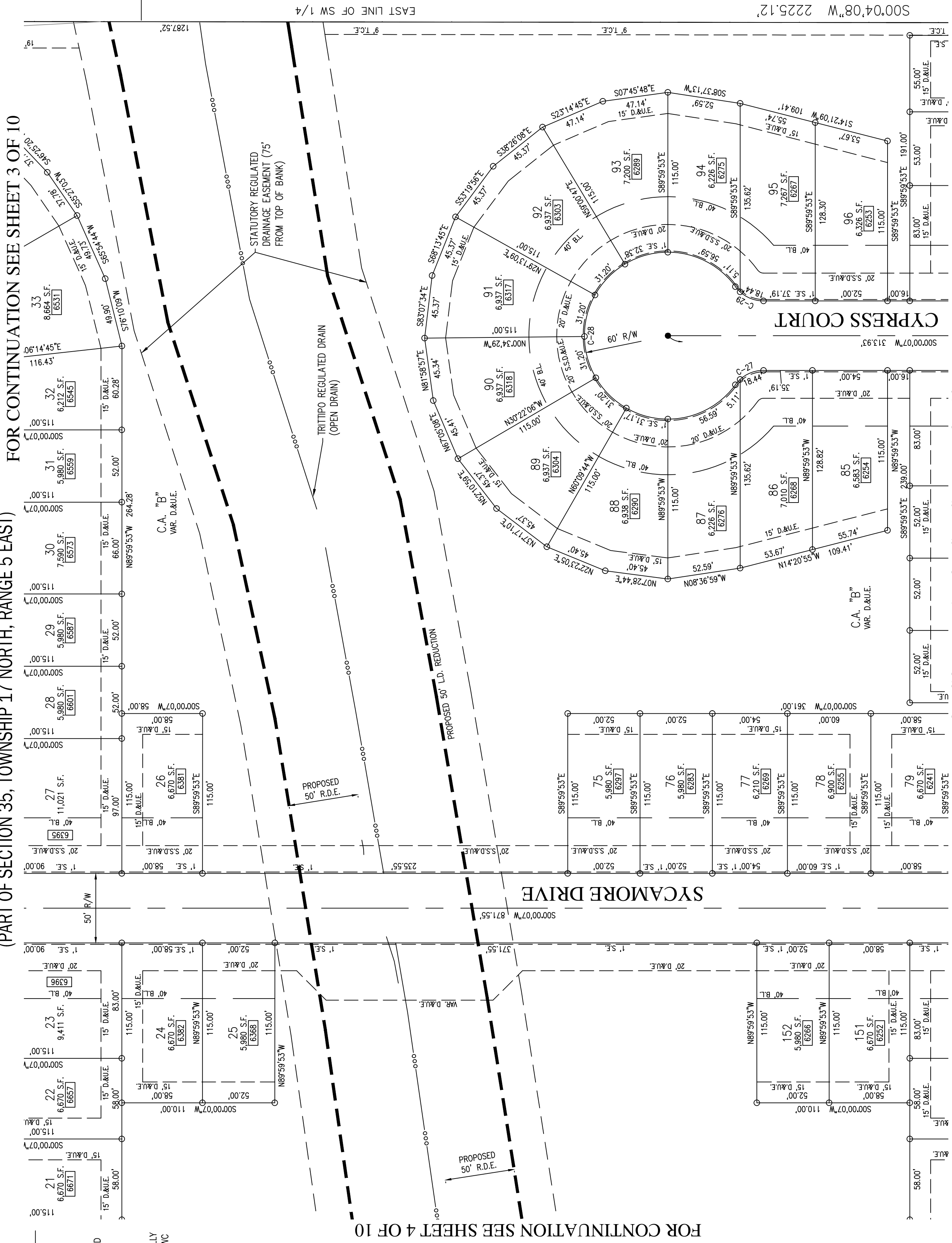
Assumed North

Scale: 1" = 50'

# MERIDIAN HOMES AT SYCAMORE DRIVE SECONDARY PLAT

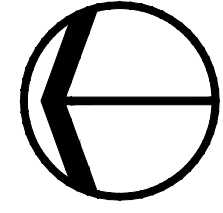
VERNON TOWNSHIP, HANCOCK COUNTY, INDIANA

(PART OF SECTION 35, TOWNSHIP 17 NORTH, RANGE 5 EAST)



SEE SHEET 1 FOR CURVE TABLE  
SEE SHEET 10 FOR LAND DESCRIPTION

SHEET 5 OF 10



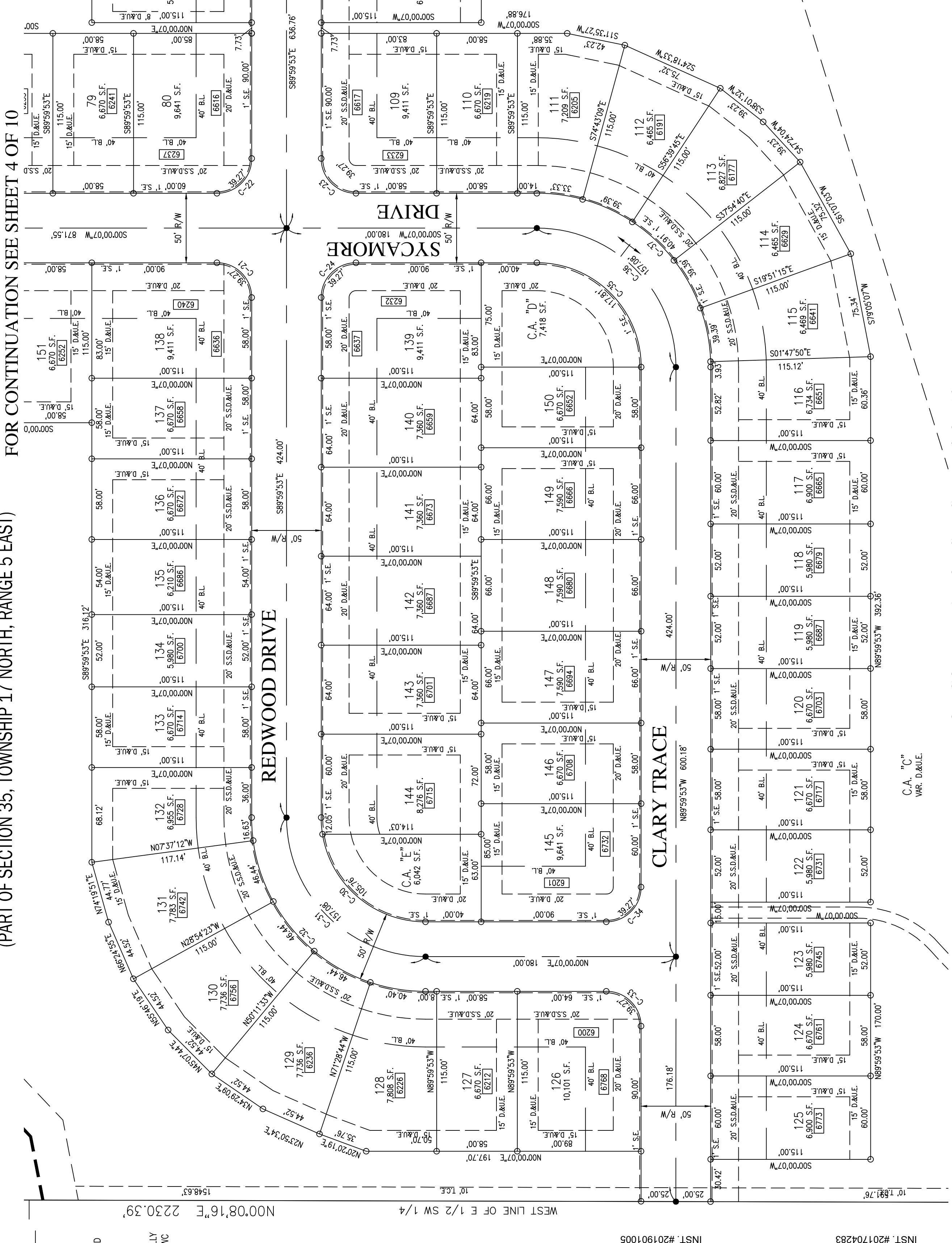
Assumed North

Scale: 1" = 50'

# MERIDIAN HOMES AT SYCAMORE DRIVE SECONDARY PLAT

VERNON TOWNSHIP, HANCOCK COUNTY, INDIANA

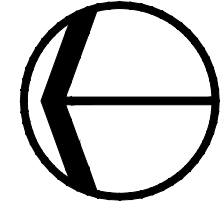
(PART OF SECTION 35, TOWNSHIP 17 NORTH, RANGE 5 EAST)



THIS INSTRUMENT PREPARED BY:

MICHAEL G. JUDT  
HMC ENGINEERING  
135 N. PENNSYLVANIA STREET, SUITE 2800  
INDIANAPOLIS, INDIANA 46204  
PHONE: (317) 347-3663

DEVELOPED BY:  
HARTMAN CAPITAL, LLC  
505 S. FIFTH STREET  
CHAMPAIGN, ILLINOIS 61820  
PHONE: (217) 898-3366



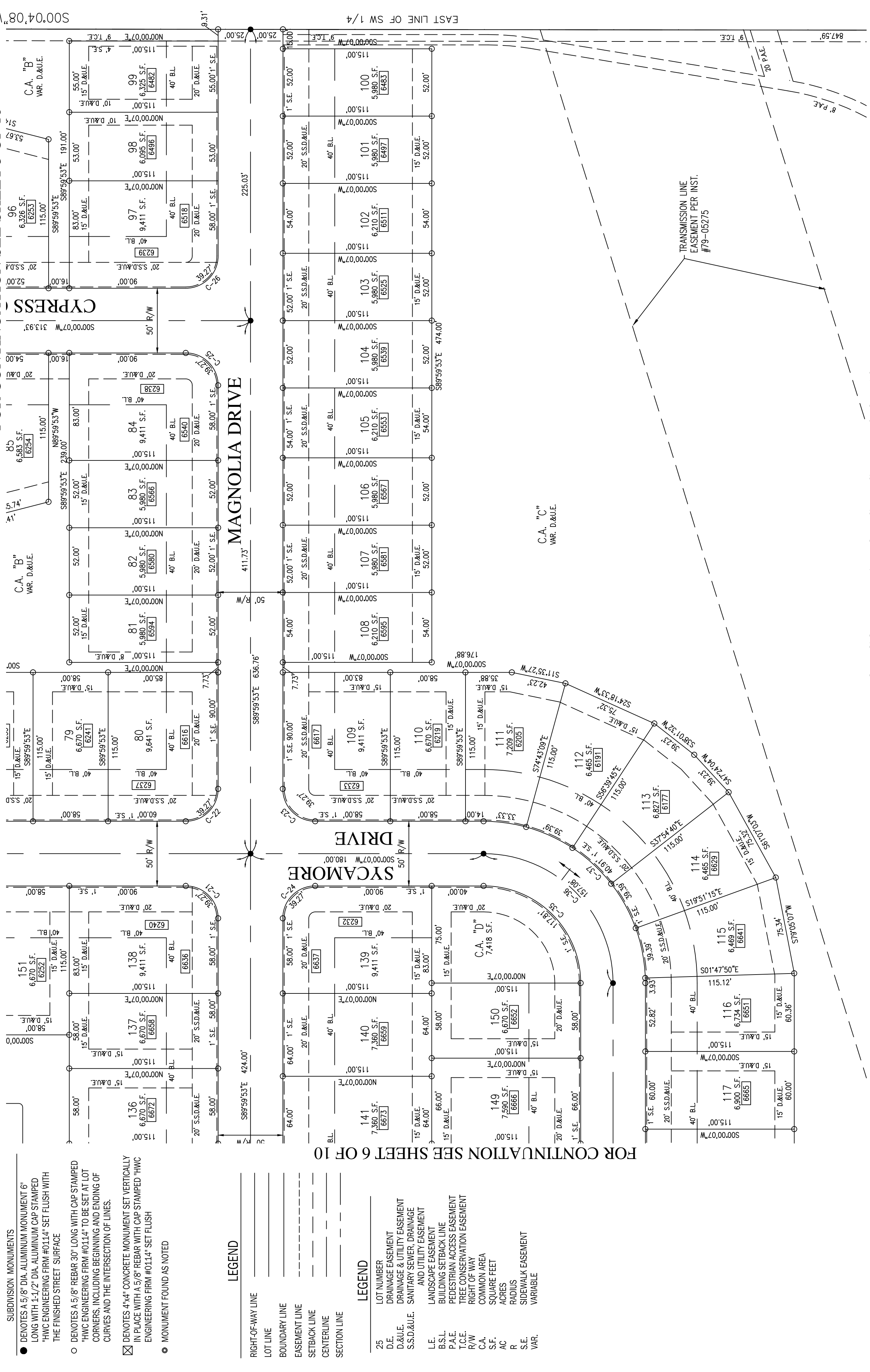
Assumed North

Scale: 1" = 50'

# MERIDIAN HOMES AT SYCAMORE DRIVE SECONDARY PLAT

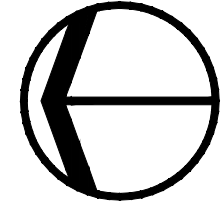
VERNON TOWNSHIP, HANCOCK COUNTY, INDIANA  
(PART OF SECTION 35, TOWNSHIP 17 NORTH, RANGE 5 EAST)

INSTRUMENT NO.:  
CABINET:  
SLIDE:



SEE SHEET 1 FOR CURVE TABLE  
SEE SHEET 10 FOR LAND DESCRIPTION

SHEET 7 OF 10

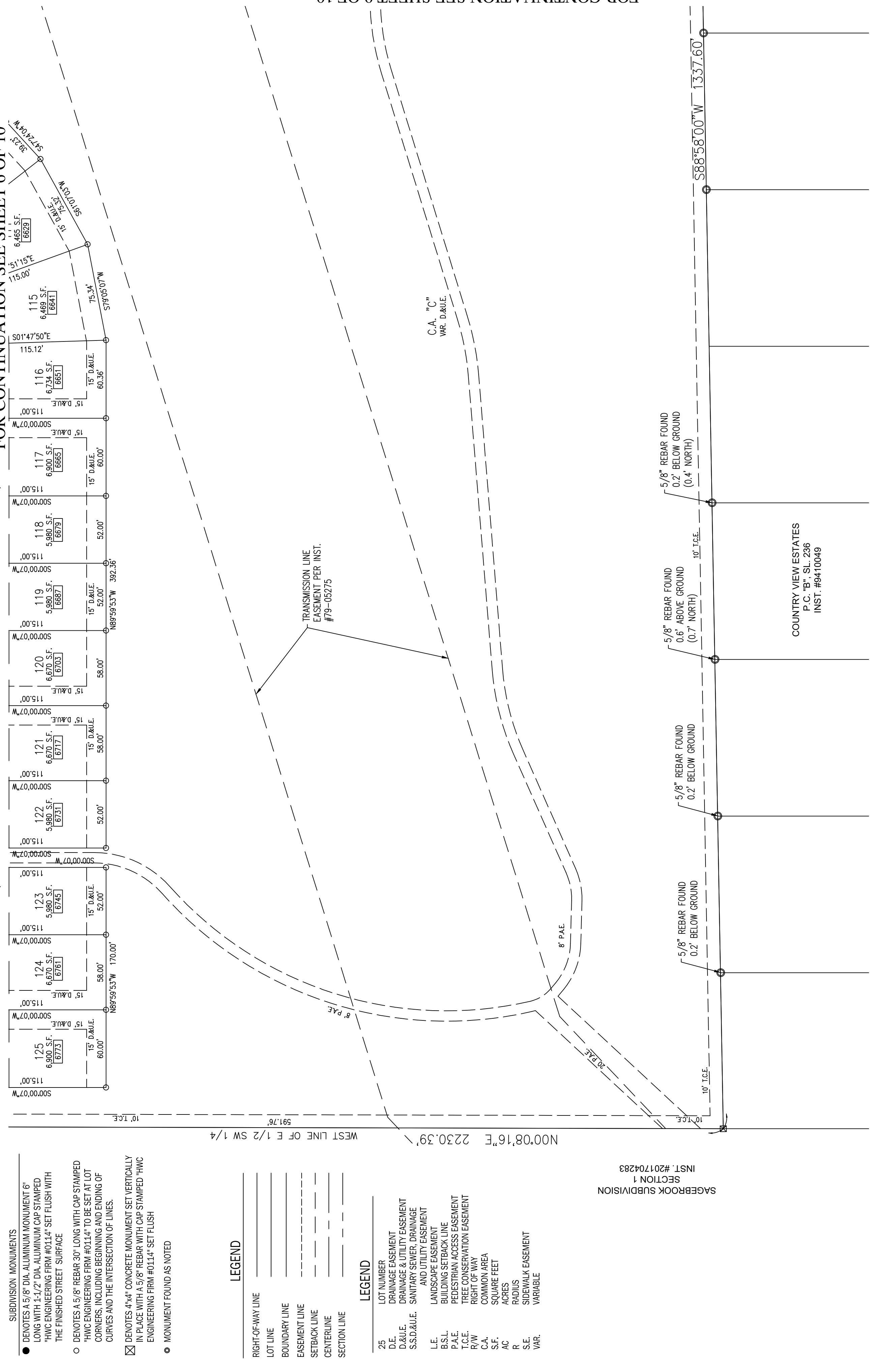


Assumed North  
Scale: 1" = 50'

# MERIDIAN HOMES AT SYCAMORE DRIVE SECONDARY PLAT

VERNON TOWNSHIP, HANCOCK COUNTY, INDIANA  
(PART OF SECTION 35, TOWNSHIP 17 NORTH, RANGE 5 EAST)

INSTRUMENT NO.:  
CABINET:  
SLIDE:



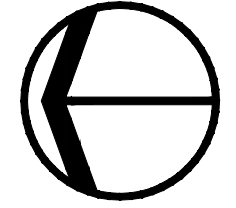
SEE SHEET 1 FOR CURVE TABLE  
SEE SHEET 10 FOR LAND DESCRIPTION

SHEET 8 OF 10

THIS INSTRUMENT PREPARED BY:

MICHAEL G. JUDT  
HMC ENGINEERING  
135 N. PENNSYLVANIA STREET, SUITE 2800  
INDIANAPOLIS, INDIANA 46204  
PHONE: (317) 347-3663

DEVELOPED BY:  
HARTMAN CAPITAL, LLC  
505 S. EIGHTH STREET  
CHAMPAIGN, ILLINOIS 61820  
PHONE: (217) 898-3366



Assumed North

Scale: 1" = 50'

SUBDIVISION MONUMENTS

- DENOTES A 1/2" DIA. ALUMINUM MONUMENT 6" LONG WITH 1/4" DIA. ALUMINUM CAP STAMPED "HMC ENGINEERING FIRM #0114" SET FLUSH WITH THE FINISHED STREET SURFACE
- DENOTES A 1/2" REBAR 30" LONG WITH CAP STAMPED "HMC ENGINEERING FIRM #0114" SET FLUSH WITH THE FINISHED STREET SURFACE
- ✕ DENOTES 4"x4" CONCRETE MONUMENT SET VERTICALLY IN PLACE WITH A 5/8" REBAR WITH CAP STAMPED "HMC ENGINEERING FIRM #0114" SET FLUSH
- MONUMENT FOUND AS NOTED

LEGEND

RIGHT-OF-WAY LINE	---
LOT LINE	---
BOUNDARY LINE	---
EASEMENT LINE	---
SETBACK LINE	---
CENTERLINE	---
SECTION LINE	---

LEGEND

26	LOT NUMBER
D.E.	DRAINAGE EASEMENT
D.A.U.E.	DRAINAGE & UTILITY EASEMENT
S.S.D.A.U.E.	SANITARY SEWER, DRAINAGE AND UTILITY EASEMENT
L.E.	LANDSCAPE EASEMENT
P.S.L.	PLANTING STRIP EASEMENT
P.D.S.L.	PROCESSED LANDSCAPE EASEMENT
T.C.E.	TREE CONSERVATION EASEMENT
R/W	RIGHT OF WAY
C.A.	COMMON AREA
S.F.	SQUARE FEET
R	RAILROAD
P	PIEDMONT
S.E.	SIDEWALK EASEMENT
VAR.	VARIABLE

FOR CONTINUATION SEE SHEET 8 OF 10

VERNON TOWNSHIP, HANCOCK COUNTY, INDIANA

(PART OF SECTION 35, TOWNSHIP 17 NORTH, RANGE 5 EAST)

FOR CONTINUATION SEE SHEET 7 OF 10

# MERIDIAN HOMES AT SYCAMORE DRIVE SECONDARY PLAT

VERNON TOWNSHIP, HANCOCK COUNTY, INDIANA

(PART OF SECTION 35, TOWNSHIP 17 NORTH, RANGE 5 EAST)

FOR CONTINUATION SEE SHEET 7 OF 10

FOR CONTINUATION SEE SHEET 8 OF 10

FOR CONTINUATION SEE SHEET 9 OF 10

FOR CONTINUATION SEE SHEET 10 OF 10

FOR CONTINUATION SEE SHEET 11 OF 10

FOR CONTINUATION SEE SHEET 12 OF 10

FOR CONTINUATION SEE SHEET 13 OF 10

FOR CONTINUATION SEE SHEET 14 OF 10

FOR CONTINUATION SEE SHEET 15 OF 10

FOR CONTINUATION SEE SHEET 16 OF 10

FOR CONTINUATION SEE SHEET 17 OF 10

FOR CONTINUATION SEE SHEET 18 OF 10

FOR CONTINUATION SEE SHEET 19 OF 10

FOR CONTINUATION SEE SHEET 20 OF 10

FOR CONTINUATION SEE SHEET 21 OF 10

FOR CONTINUATION SEE SHEET 22 OF 10

FOR CONTINUATION SEE SHEET 23 OF 10

FOR CONTINUATION SEE SHEET 24 OF 10

FOR CONTINUATION SEE SHEET 25 OF 10

FOR CONTINUATION SEE SHEET 26 OF 10

FOR CONTINUATION SEE SHEET 27 OF 10

FOR CONTINUATION SEE SHEET 28 OF 10

FOR CONTINUATION SEE SHEET 29 OF 10

FOR CONTINUATION SEE SHEET 30 OF 10

FOR CONTINUATION SEE SHEET 31 OF 10

FOR CONTINUATION SEE SHEET 32 OF 10

FOR CONTINUATION SEE SHEET 33 OF 10

FOR CONTINUATION SEE SHEET 34 OF 10

FOR CONTINUATION SEE SHEET 35 OF 10

FOR CONTINUATION SEE SHEET 36 OF 10

FOR CONTINUATION SEE SHEET 37 OF 10

FOR CONTINUATION SEE SHEET 38 OF 10

FOR CONTINUATION SEE SHEET 39 OF 10

FOR CONTINUATION SEE SHEET 40 OF 10

FOR CONTINUATION SEE SHEET 41 OF 10

FOR CONTINUATION SEE SHEET 42 OF 10

FOR CONTINUATION SEE SHEET 43 OF 10

FOR CONTINUATION SEE SHEET 44 OF 10

FOR CONTINUATION SEE SHEET 45 OF 10

FOR CONTINUATION SEE SHEET 46 OF 10

FOR CONTINUATION SEE SHEET 47 OF 10

FOR CONTINUATION SEE SHEET 48 OF 10

FOR CONTINUATION SEE SHEET 49 OF 10

FOR CONTINUATION SEE SHEET 50 OF 10

FOR CONTINUATION SEE SHEET 51 OF 10

FOR CONTINUATION SEE SHEET 52 OF 10

FOR CONTINUATION SEE SHEET 53 OF 10

FOR CONTINUATION SEE SHEET 54 OF 10

FOR CONTINUATION SEE SHEET 55 OF 10

FOR CONTINUATION SEE SHEET 56 OF 10

FOR CONTINUATION SEE SHEET 57 OF 10

FOR CONTINUATION SEE SHEET 58 OF 10

FOR CONTINUATION SEE SHEET 59 OF 10

FOR CONTINUATION SEE SHEET 60 OF 10

FOR CONTINUATION SEE SHEET 61 OF 10

FOR CONTINUATION SEE SHEET 62 OF 10

FOR CONTINUATION SEE SHEET 63 OF 10

FOR CONTINUATION SEE SHEET 64 OF 10

FOR CONTINUATION SEE SHEET 65 OF 10

FOR CONTINUATION SEE SHEET 66 OF 10

FOR CONTINUATION SEE SHEET 67 OF 10

FOR CONTINUATION SEE SHEET 68 OF 10

FOR CONTINUATION SEE SHEET 69 OF 10

FOR CONTINUATION SEE SHEET 70 OF 10

FOR CONTINUATION SEE SHEET 71 OF 10

FOR CONTINUATION SEE SHEET 72 OF 10

FOR CONTINUATION SEE SHEET 73 OF 10

FOR CONTINUATION SEE SHEET 74 OF 10

FOR CONTINUATION SEE SHEET 75 OF 10

FOR CONTINUATION SEE SHEET 76 OF 10

FOR CONTINUATION SEE SHEET 77 OF 10

FOR CONTINUATION SEE SHEET 78 OF 10

FOR CONTINUATION SEE SHEET 79 OF 10

FOR CONTINUATION SEE SHEET 80 OF 10

FOR CONTINUATION SEE SHEET 81 OF 10

FOR CONTINUATION SEE SHEET 82 OF 10

FOR CONTINUATION SEE SHEET 83 OF 10

FOR CONTINUATION SEE SHEET 84 OF 10

FOR CONTINUATION SEE SHEET 85 OF 10

FOR CONTINUATION SEE SHEET 86 OF 10

FOR CONTINUATION SEE SHEET 87 OF 10

FOR CONTINUATION SEE SHEET 88 OF 10

FOR CONTINUATION SEE SHEET 89 OF 10

FOR CONTINUATION SEE SHEET 90 OF 10

FOR CONTINUATION SEE SHEET 91 OF 10

FOR CONTINUATION SEE SHEET 92 OF 10

FOR CONTINUATION SEE SHEET 93 OF 10

FOR CONTINUATION SEE SHEET 94 OF 10

FOR CONTINUATION SEE SHEET 95 OF 10

FOR CONTINUATION SEE SHEET 96 OF 10

FOR CONTINUATION SEE SHEET 97 OF 10

FOR CONTINUATION SEE SHEET 98 OF 10

FOR CONTINUATION SEE SHEET 99 OF 10

FOR CONTINUATION SEE SHEET 100 OF 10

FOR CONTINUATION SEE SHEET 101 OF 10

FOR CONTINUATION SEE SHEET 102 OF 10

FOR CONTINUATION SEE SHEET 103 OF 10

FOR CONTINUATION SEE SHEET 104 OF 10

FOR CONTINUATION SEE SHEET 105 OF 10

FOR CONTINUATION SEE SHEET 106 OF 10

FOR CONTINUATION SEE SHEET 107 OF 10

FOR CONTINUATION SEE SHEET 108 OF 10

FOR CONTINUATION SEE SHEET 109 OF 10

FOR CONTINUATION SEE SHEET 110 OF 10

FOR CONTINUATION SEE SHEET 111 OF 10

FOR CONTINUATION SEE SHEET 112 OF 10

FOR CONTINUATION SEE SHEET 113 OF 10

FOR CONTINUATION SEE SHEET 114 OF 10

FOR CONTINUATION SEE SHEET 115 OF 10

FOR CONTINUATION SEE SHEET 116 OF 10

FOR CONTINUATION SEE SHEET 117 OF 10

FOR CONTINUATION SEE SHEET 118 OF 10

FOR CONTINUATION SEE SHEET 119 OF 10

FOR CONTINUATION SEE SHEET 120 OF 10

FOR CONTINUATION SEE SHEET 121 OF 10

FOR CONTINUATION SEE SHEET 122 OF 10

FOR CONTINUATION SEE SHEET 123 OF 10

FOR CONTINUATION SEE SHEET 124 OF 10

FOR CONTINUATION SEE SHEET 125 OF 10

FOR CONTINUATION SEE SHEET 126 OF 10

FOR CONTINUATION SEE SHEET 127 OF 10

FOR CONTINUATION SEE SHEET 128 OF 10

FOR CONTINUATION SEE SHEET 129 OF 10

FOR CONTINUATION SEE SHEET 130 OF 10

FOR CONTINUATION SEE SHEET 131 OF 10

FOR CONTINUATION SEE SHEET 132 OF 10

FOR CONTINUATION SEE SHEET 133 OF 10

FOR CONTINUATION SEE SHEET 134 OF 10

FOR CONTINUATION SEE SHEET 135 OF 10

FOR CONTINUATION SEE SHEET 136 OF 10

FOR CONTINUATION SEE SHEET 137 OF 10

FOR CONTINUATION SEE SHEET 138 OF 10

FOR CONTINUATION SEE SHEET 139 OF 10

FOR CONTINUATION SEE SHEET 140 OF 10

FOR CONTINUATION SEE SHEET 141 OF 10

FOR CONTINUATION SEE SHEET 142 OF 10

FOR CONTINUATION SEE SHEET 143 OF 10

FOR CONTINUATION SEE SHEET 144 OF 10

FOR CONTINUATION SEE SHEET 145 OF 10

FOR CONTINUATION SEE SHEET 146 OF 10

FOR CONTINUATION SEE SHEET 147 OF 10

FOR CONTINUATION SEE SHEET 148 OF 10

FOR CONTINUATION SEE SHEET 149 OF 10

FOR CONTINUATION SEE SHEET 150 OF 10

FOR CONTINUATION SEE SHEET 151 OF 10

FOR CONTINUATION SEE SHEET 152 OF 10

FOR CONTINUATION SEE SHEET 153 OF 10

FOR CONTINUATION SEE SHEET 154 OF 10

FOR CONTINUATION SEE SHEET 155 OF 10

FOR CONTINUATION SEE SHEET 156 OF 10

FOR CONTINUATION SEE SHEET 157 OF 10

FOR CONTINUATION SEE SHEET 158 OF 10

FOR CONTINUATION SEE SHEET 159 OF 10

FOR CONTINUATION SEE SHEET 160 OF 10

FOR CONTINUATION SEE SHEET 161 OF 10

FOR CONTINUATION SEE SHEET 162 OF 10

FOR CONTINUATION SEE SHEET 163 OF 10

FOR CONTINUATION SEE SHEET 164 OF 10

FOR CONTINUATION SEE SHEET 165 OF 10

FOR CONTINUATION SEE SHEET 166 OF 10

FOR CONTINUATION SEE SHEET 167 OF 10

FOR CONTINUATION SEE SHEET 168 OF 10

FOR CONTINUATION SEE SHEET 169 OF 10

FOR CONTINUATION SEE SHEET 170 OF 10

FOR CONTINUATION SEE SHEET 171 OF 10

FOR CONTINUATION SEE SHEET 172 OF 10

FOR CONTINUATION SEE SHEET 173 OF 10

FOR CONTINUATION SEE SHEET 174 OF 10

FOR CONTINUATION SEE SHEET 175 OF 10

FOR CONTINUATION SEE SHEET 176 OF 10

FOR CONTINUATION SEE SHEET 177 OF 10

FOR CONTINUATION SEE SHEET 178 OF 10

FOR CONTINUATION SEE SHEET 179 OF 10

FOR CONTINUATION SEE SHEET 180 OF 10

FOR CONTINUATION SEE SHEET 181 OF 10

FOR CONTINUATION SEE SHEET 182 OF 10

FOR CONTINUATION SEE SHEET 183 OF 10

FOR CONTINUATION SEE SHEET 184 OF 10

FOR CONTINUATION SEE SHEET 185 OF 10

FOR CONTINUATION SEE SHEET 186 OF 10

FOR CONTINUATION SEE SHEET 187 OF 10

FOR CONTINUATION SEE SHEET 188 OF 10

FOR CONTINUATION SEE SHEET 189 OF 10

FOR CONTINUATION SEE SHEET 190 OF 10

FOR CONTINUATION SEE SHEET 191 OF 10

FOR CONTINUATION SEE SHEET 192 OF 10

FOR CONTINUATION SEE SHEET 193 OF 10

FOR CONTINUATION SEE SHEET 194 OF 10

FOR CONTINUATION SEE SHEET 195 OF 10

FOR CONTINUATION SEE SHEET 196 OF 10

FOR CONTINUATION SEE SHEET 197 OF 10

FOR CONTINUATION SEE SHEET 198 OF 10

FOR CONTINUATION SEE SHEET 199 OF 10

FOR CONTINUATION SEE SHEET 200 OF 10

FOR CONTINUATION SEE SHEET 201 OF 10

FOR CONTINUATION SEE SHEET 202 OF 10

FOR CONTINUATION SEE SHEET 203 OF 10

FOR CONTINUATION SEE SHEET 204 OF 10

FOR CONTINUATION SEE SHEET 205 OF 10

FOR CONTINUATION SEE SHEET 206 OF 10

FOR CONTINUATION SEE SHEET 207 OF 10

FOR CONTINUATION SEE SHEET 208 OF 10

FOR CONTINUATION SEE SHEET 209 OF 10

FOR CONTINUATION SEE SHEET 210 OF 10

FOR CONTINUATION SEE SHEET 211 OF 10

FOR CONTINUATION SEE SHEET 212 OF 10

FOR CONTINUATION SEE SHEET 213 OF 10

FOR CONTINUATION SEE SHEET 214 OF 10

FOR CONTINUATION SEE SHEET 215 OF 10

FOR CONTINUATION SEE SHEET 216 OF 10

FOR CONTINUATION SEE SHEET 217 OF 10

FOR CONTINUATION SEE SHEET 218 OF 10

FOR CONTINUATION SEE SHEET 219 OF 10

FOR CONTINUATION SEE SHEET 220 OF 10

FOR CONTINUATION SEE SHEET 221 OF 10

FOR CONTINUATION SEE SHEET 222 OF 10

FOR CONTINUATION SEE SHEET 223 OF 10

FOR CONTINUATION SEE SHEET 224 OF 10

FOR CONTINUATION SEE SHEET 225 OF 10

FOR CONTINUATION SEE SHEET 226 OF 10

FOR CONTINUATION SEE SHEET 227 OF 10

FOR CONTINUATION SEE SHEET 228 OF 10

FOR CONTINUATION SEE SHEET 229 OF 10

FOR CONTINUATION SEE SHEET 230 OF 10

FOR CONTINUATION SEE SHEET 231 OF 10

FOR CONTINUATION SEE SHEET 232 OF 10

FOR CONTINUATION SEE SHEET 233 OF 10

FOR CONTINUATION SEE SHEET 234 OF 10

FOR CONTINUATION SEE SHEET 235 OF 10

FOR CONTINUATION SEE SHEET 236 OF 10

FOR CONTINUATION SEE SHE