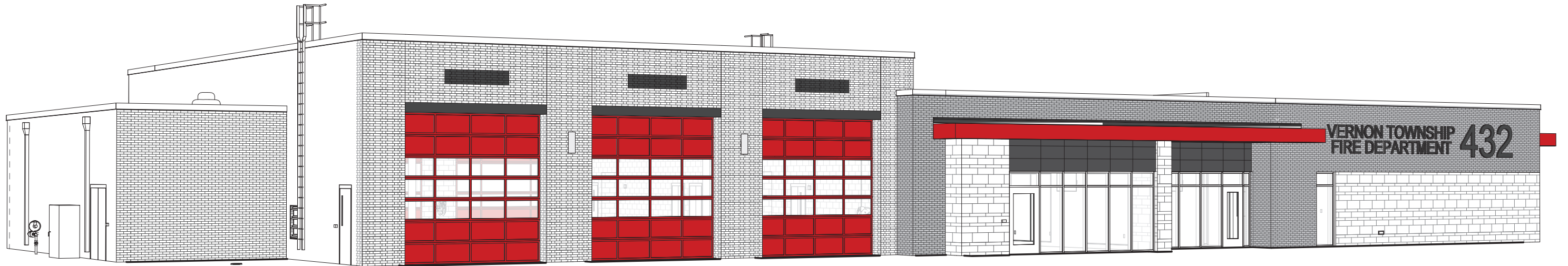




1 3D VIEW - NORTH ROW - STRAIGHT VIEW
VIEW FROM 8'-0" ABOVE GRADE

NEW FIRE STATION 432

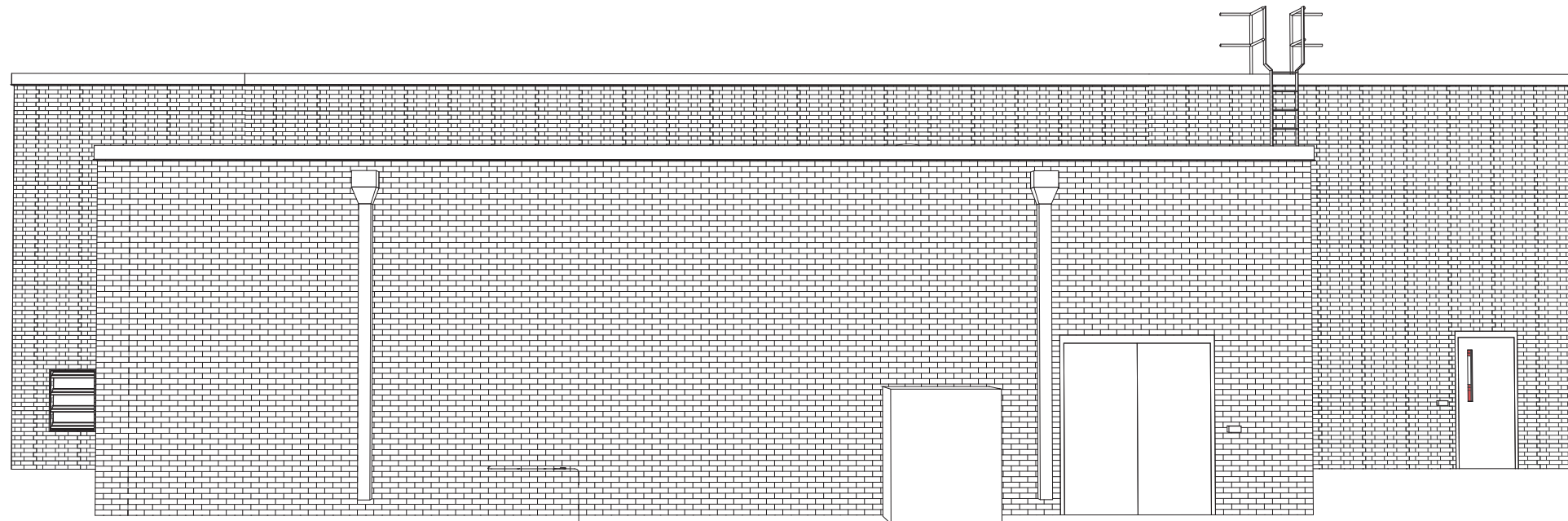
TAC COMMENTS



2 3D VIEW - NORTH ROW - EAST PROP. LINE
VIEW FROM 8'-0" ABOVE GRADE

NEW FIRE STATION 432

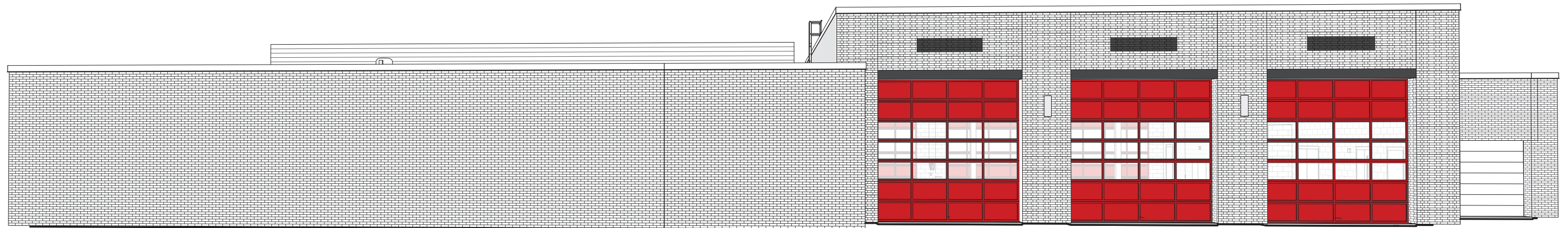
TAC COMMENTS



3 3D VIEW - EAST PROPERTY LINE - STRAIGHT VIEW
VIEW FROM 8'-0" ABOVE GRADE

NEW FIRE STATION 432

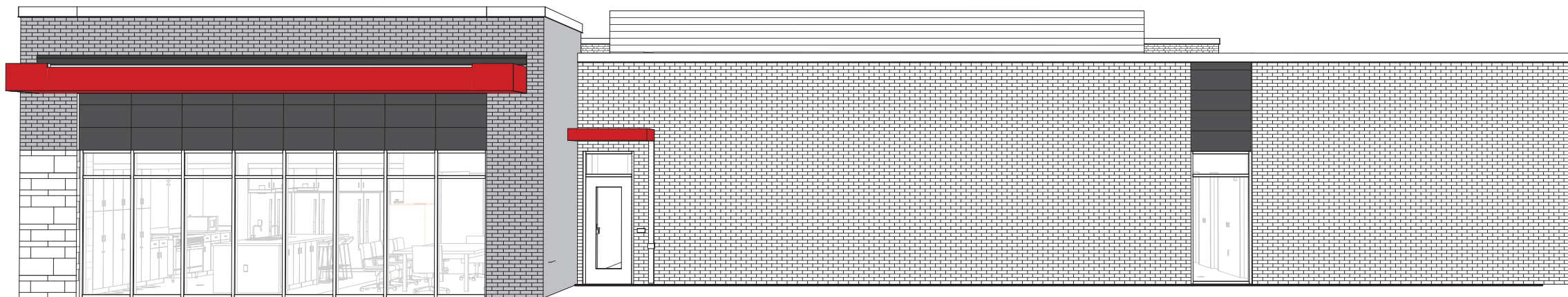
TAC COMMENTS



4 3D VIEW - SOUTH PROPERTY LINE - STRAIGHT VIEW
VIEW FROM 8'-0" ABOVE GRADE

NEW FIRE STATION 432

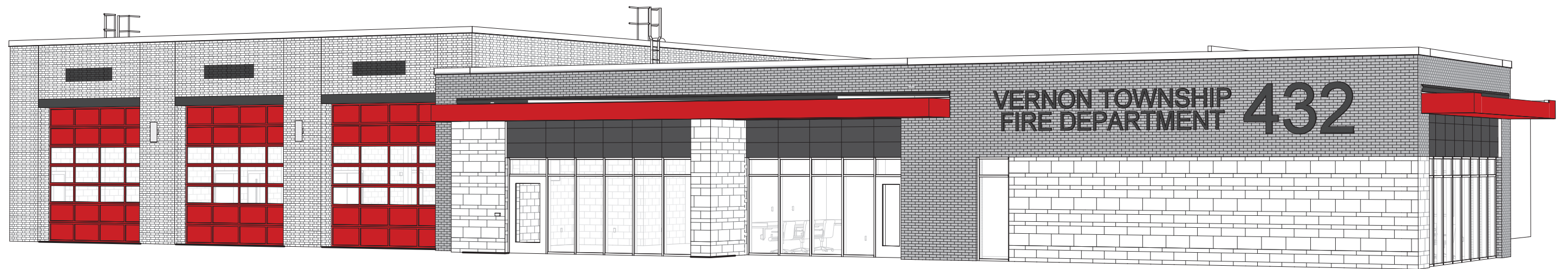
TAC COMMENTS



5 3D VIEW - WEST ROW - STRAIGHT VIEW
VIEW FROM 8'-0" ABOVE GRADE

NEW FIRE STATION 432

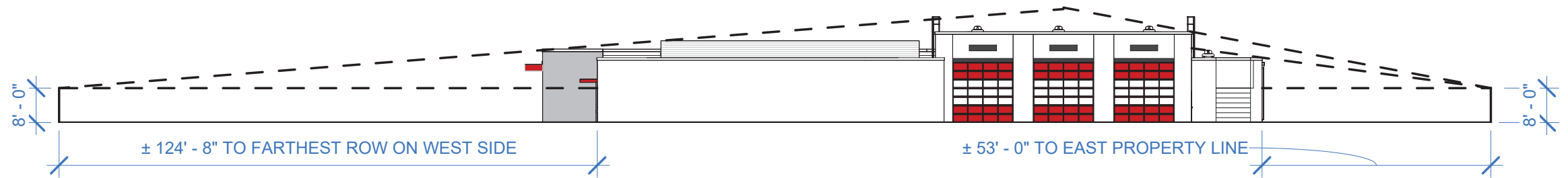
TAC COMMENTS



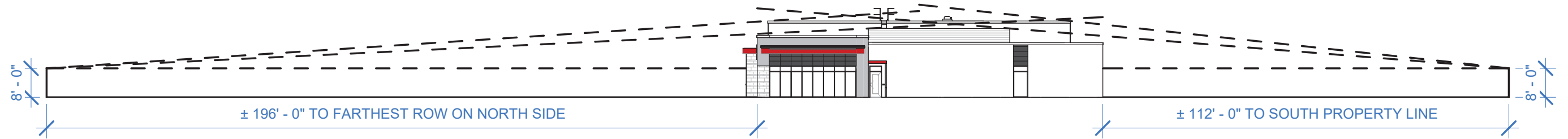
6 3D VIEW - NORTH ROW - WEST PROP. LINE
VIEW FROM 8'-0" ABOVE GRADE

NEW FIRE STATION 432

TAC COMMENTS



B CROSS SECTION - E/W
1" = 30'-0"



A CROSS SECTION - N/S
1" = 30'-0"

NEW FIRE STATION 432

TAC COMMENTS