

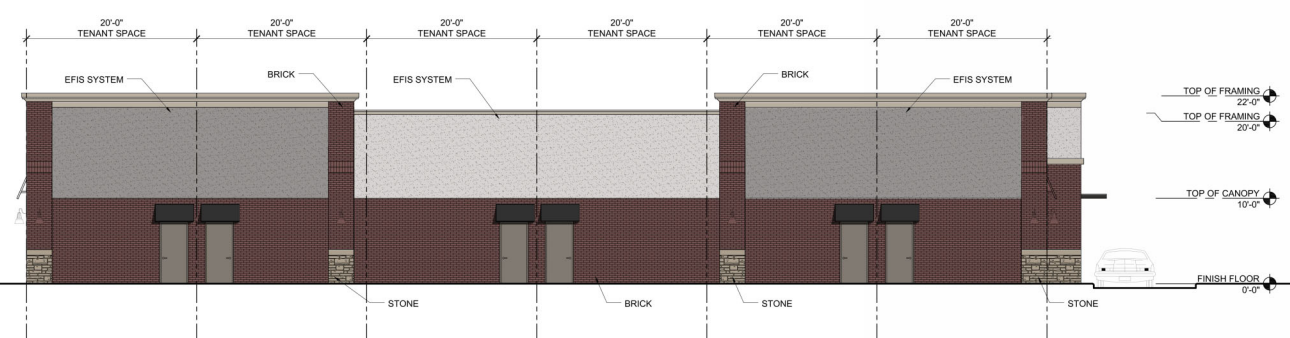
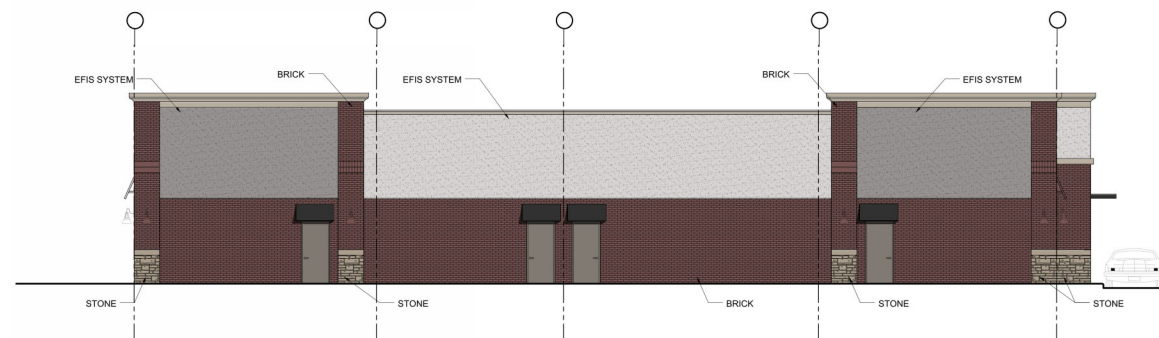
5 BLDG. 1 - WEST ELEVATION
ELE 3/32" = 1'-0"



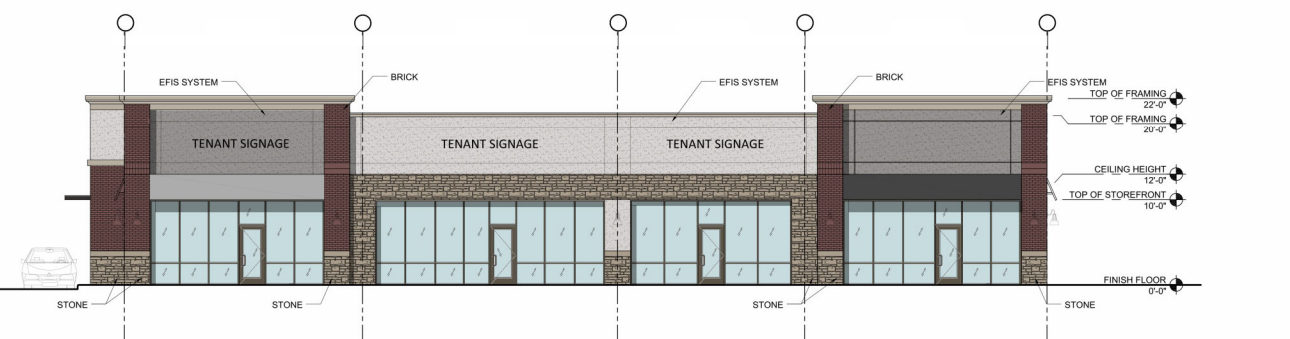
4 BLDG. 2 - WEST ELEVATION
ELE 3/32" = 1'-0"



3 BLDG. 1 & 2 - EAST ELEVATION
ELE 3/32" = 1'-0"



2 BLDG. 1 & 2 - SOUTH ELEVATION
ELE 3/32" = 1'-0"



1 BLDG. 1 & 2 - NORTH ELEVATION
ELE 3/32" = 1'-0"

MATERIAL LEGEND	
	SAC/SLT MANUFACTURED COLORS TO VAN DYKE (OR APPROVED EQUAL)
	SAC/SLT MANUFACTURED COLORS TO GULL GREY (OR APPROVED EQUAL)
	BRICK VENEER MANUFACTURED COLORS TO VAN DYKE (OR APPROVED EQUAL)
	STONE VENEER MANUFACTURED COLORS TO VAN DYKE (OR APPROVED EQUAL)
	STONE VENEER MANUFACTURED COLORS TO VAN DYKE (OR APPROVED EQUAL)
	STONE VENEER MANUFACTURED COLORS TO VAN DYKE (OR APPROVED EQUAL)
	STONEFRONT MANUFACTURED COLORS TO VAN DYKE (OR APPROVED EQUAL)
	STONEFRONT MANUFACTURED COLORS TO VAN DYKE (OR APPROVED EQUAL)

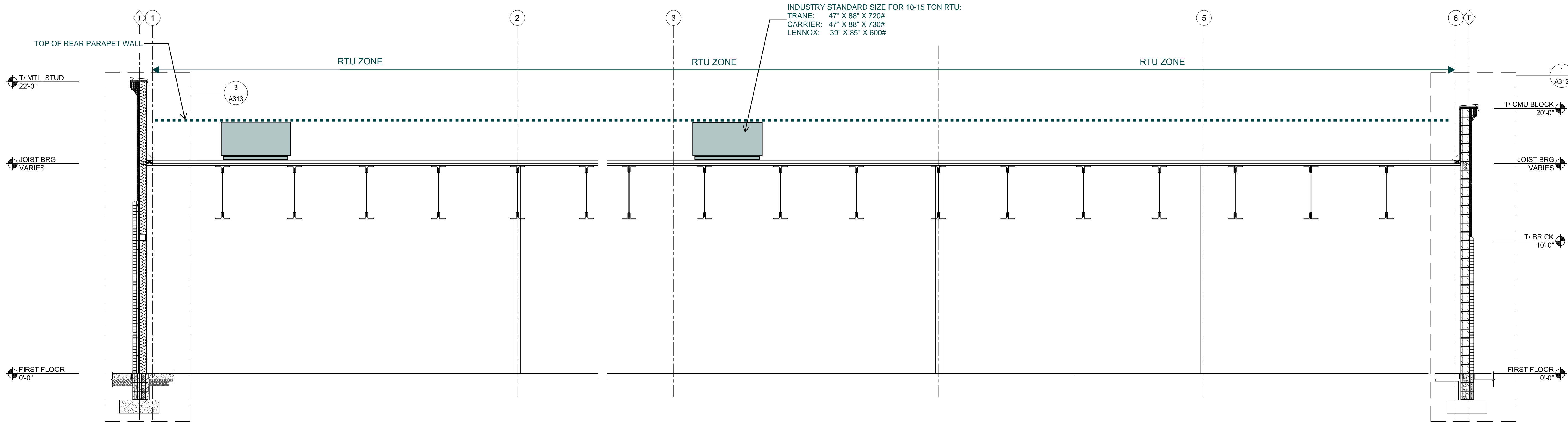
McCordsville Marketplace
Veritas Realty
Kovacs Commercial Development

Woolpert

7635 Interactive Way
Suite 100
Indianapolis, IN 46278
317.299.7500
FAX: 317.291.5805

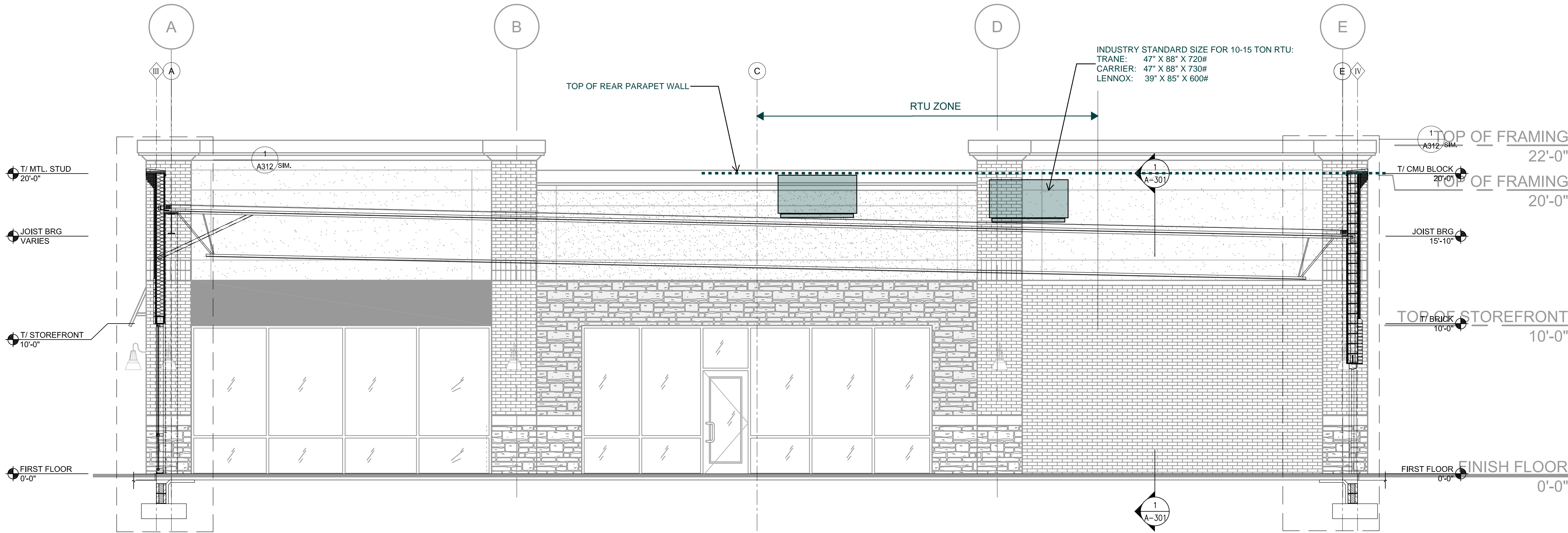
PROJECT NO.
DATE 04.03.2018
DR. ELEVATIONS
SHT. #

Printed: May 07, 2019 - 9:54am - By: Albert - Filename: G:\E\Clients\Kovacs Enterprises\78681 McCordsville MarketPlace\4.0 Disciplines\Arch\Drawings\CD\078681-A301-WALL SECTIONS.dwg



**COMMERCIAL ROOFTOP SCREENING
BUILDING SECTION**

SCALE: 1/4" = 1'-0"



**COMMERCIAL ROOFTOP SCREENING
BUILDING SECTION**

SCALE: 1/4" = 1'-0"

JOHN M. ALBERT
REGISTERED
No.
AR19600170
STATE OF
INDIANA
John M. Albert
SEAL

PROJECT No:
078681

DATE
03.01.2019

DES.
DR.

CKD.

DESCRIPTION

03.01.19 50% REVIEW SET

05.01.19 90% PERMIT & BID SET

333 North Alabama Street
Suite 200
Indianapolis, IN 46204
317.299.7500
FAX: 317.291.5805

W

WOOLPERT

ARCHITECTURE | ENGINEERING | INTERIOR

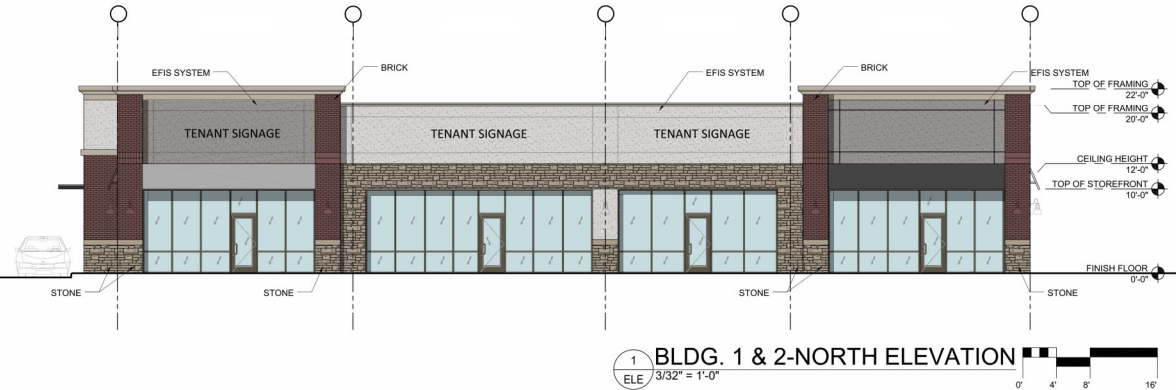
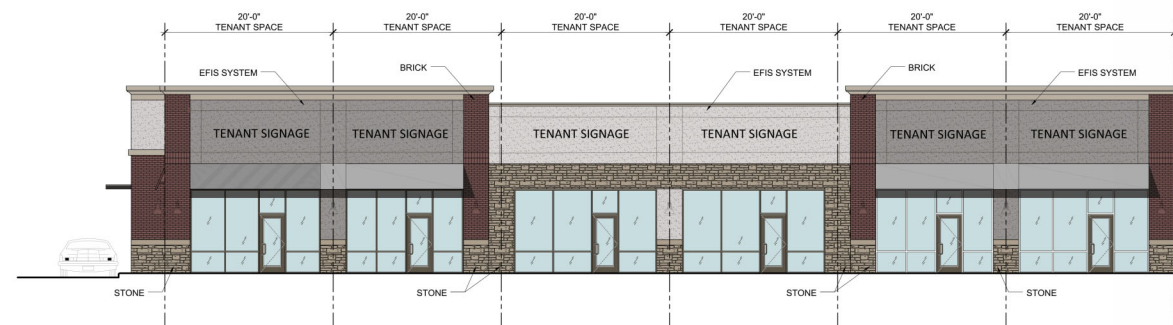
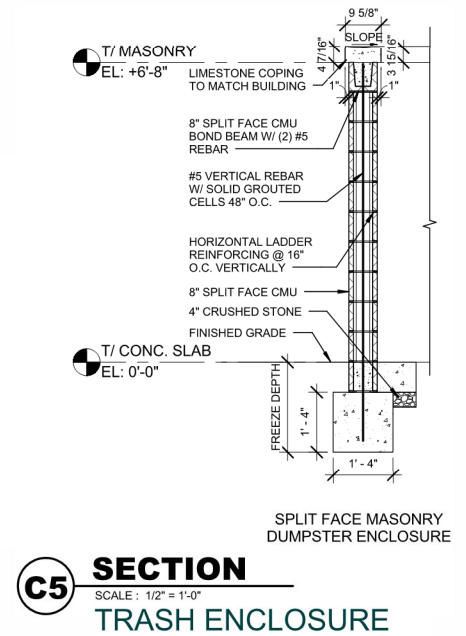
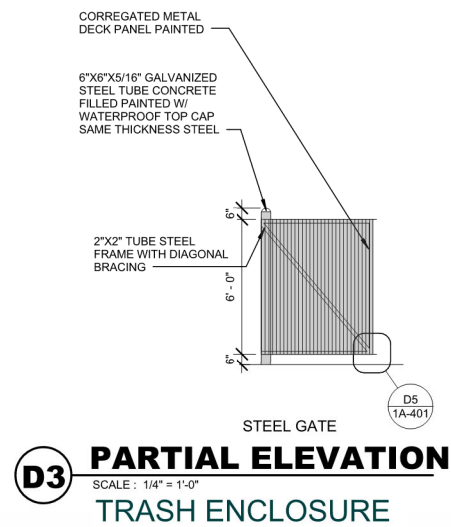
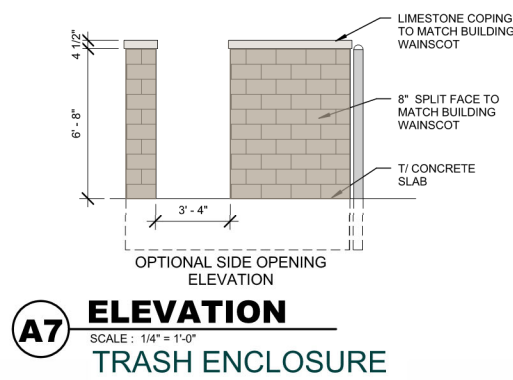
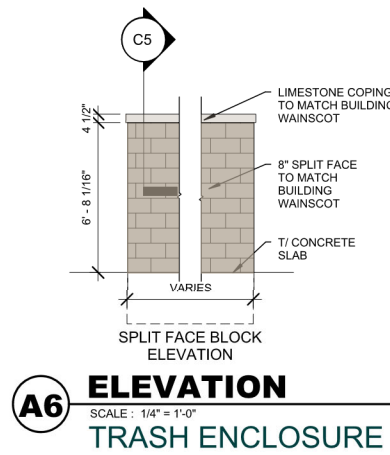
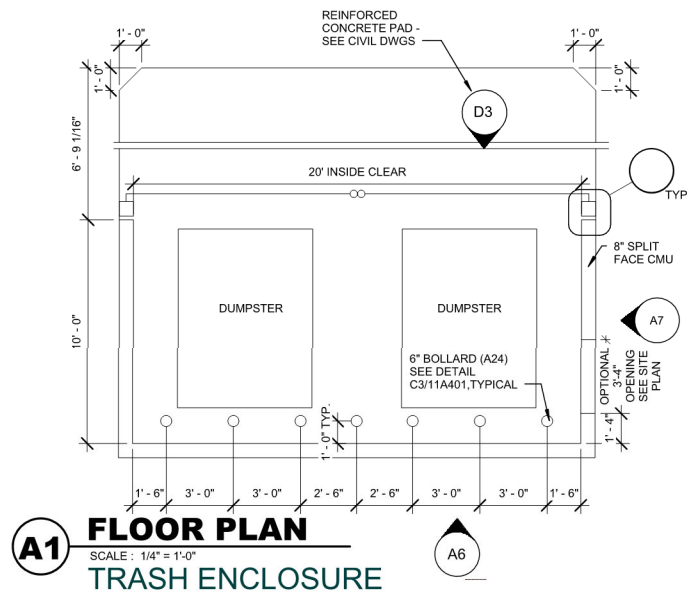
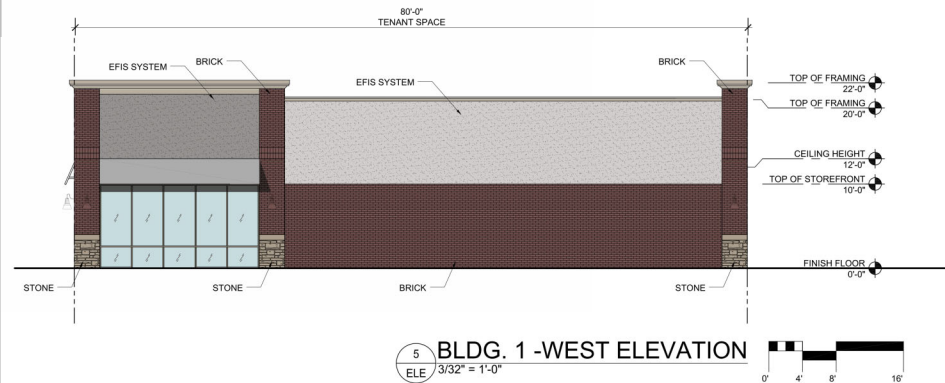
McCordsville Marketplace

West Broadway

McCordsville, Indiana

SHEET NO.

BUILDING 1
SECTIONS
ROOFTOP
SCREENING
A-301

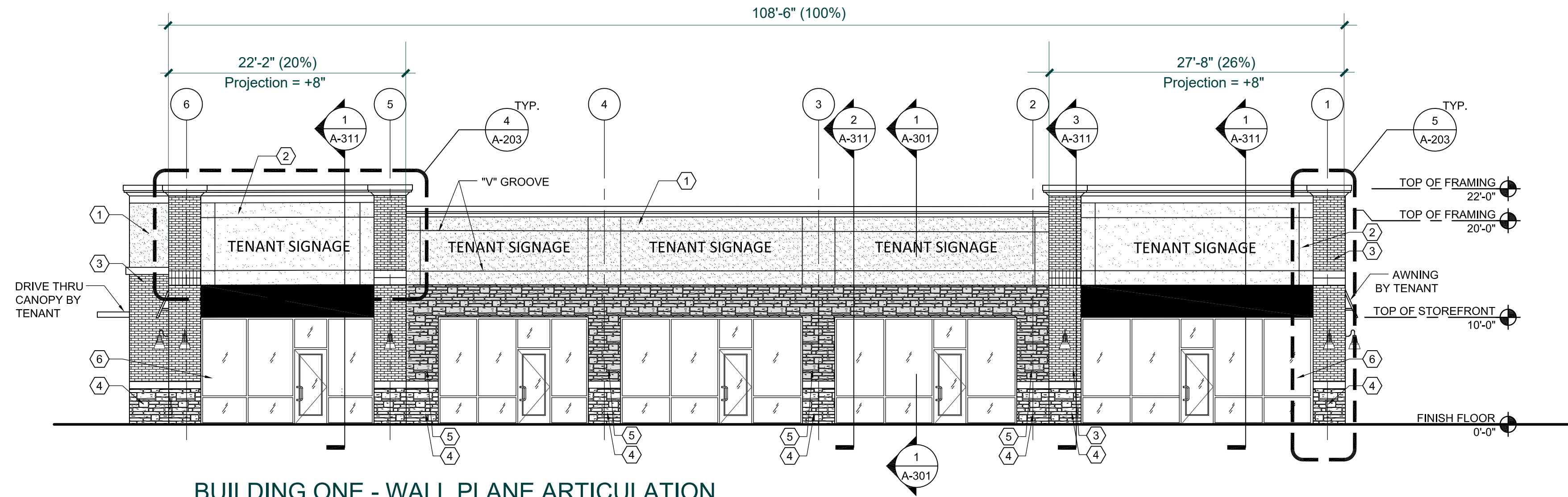


McCordsville Marketplace
Veritas Realty
Kovacs Commercial Development

WOOLPERT

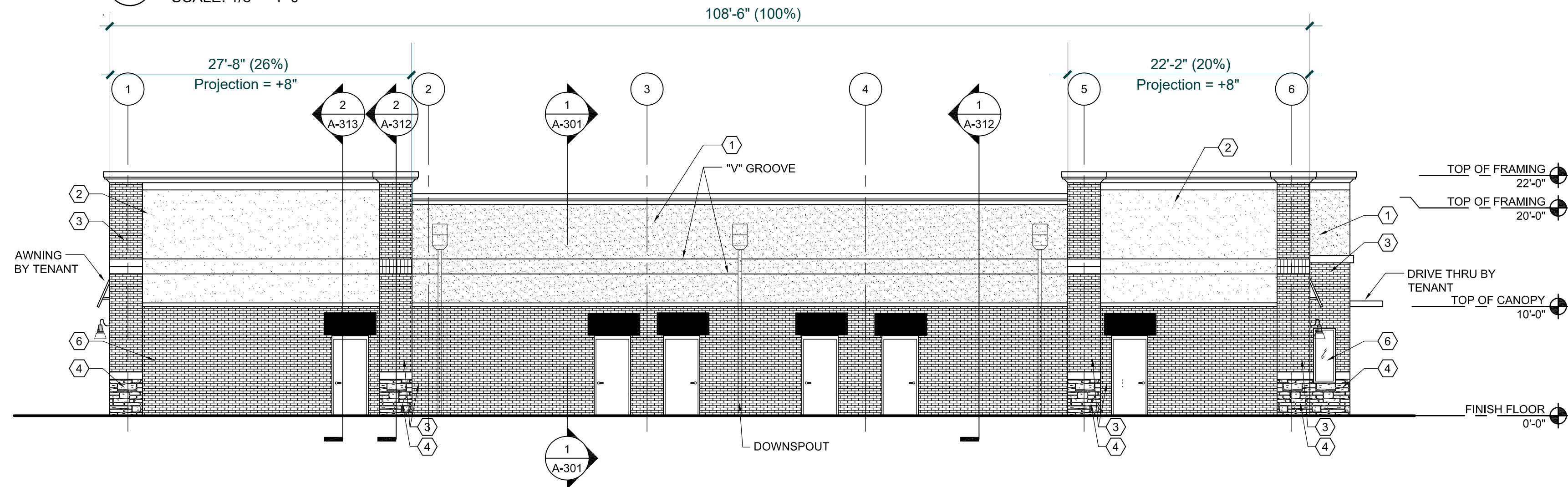
7635 Interactive Way
Suite 100
Indianapolis, IN 46278
317.299.7500
FAX: 317.291.5805

PROJECT NO.
DATE 04.03.2018
DR. ELEVATIONS
SHT. #



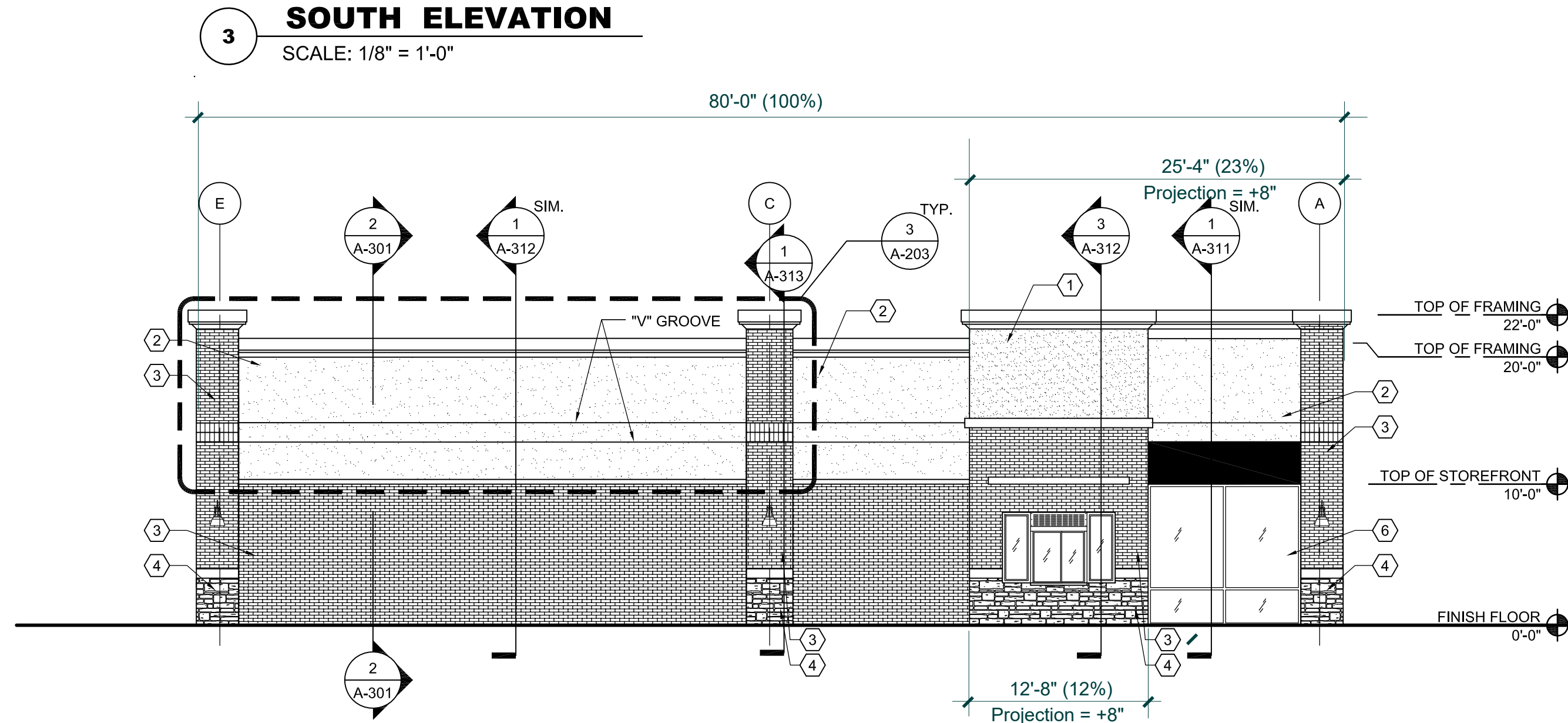
BUILDING ONE - WALL PLANE ARTICULATION

NORTH ELEVATION



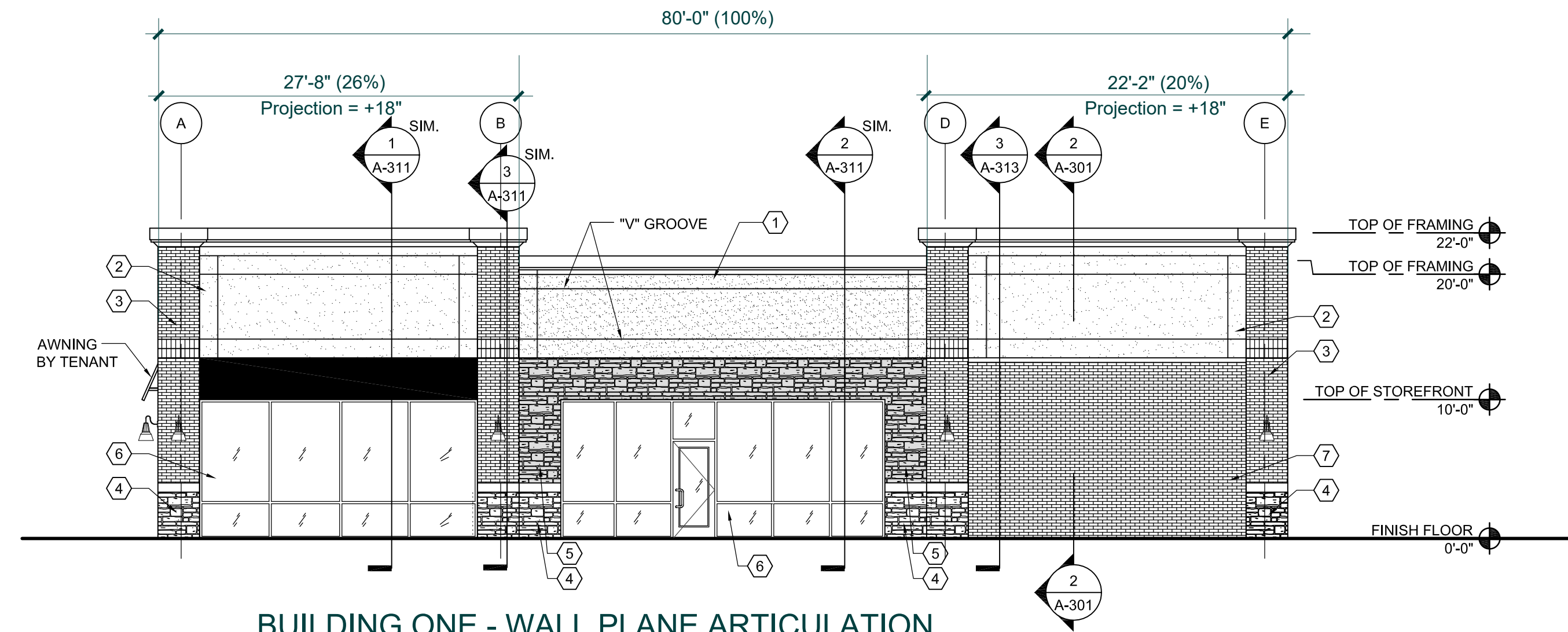
BUILDING ONE - WALL PLANE ARTICULATION

SOUTH ELEVATION



BUILDING ONE - WALL PLANE ARTICULATION

EAST ELEVATION



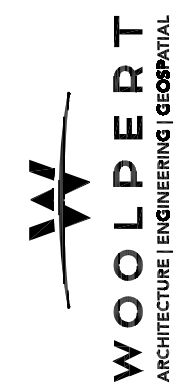
BUILDING ONE - WALL PLANE ARTICULATION

WEST ELEVATION

[illegible]

PROJECT NO:	No.	DATE	DESCRIPTION
079681		03.01.19	50% REVIEW SET
		05.01.19	90% PERMIT & BID SET
DES.			
DR.			
CKD.			

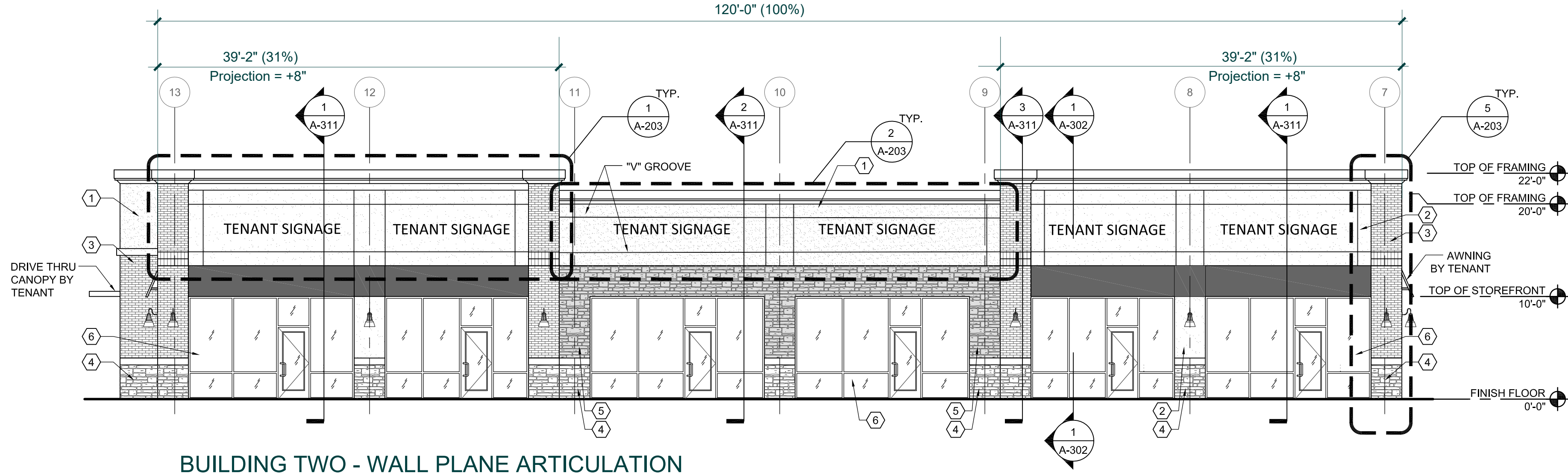
**333 North Alabama Street
Suite 200
Indianapolis, IN 46204
317.299.7500
FAX: 317.291.5805**



MCCORDSVILLE MARKETPLACE
WEST BROADWAY
MCCORDSVILLE, INDIANA

SHEET NO.

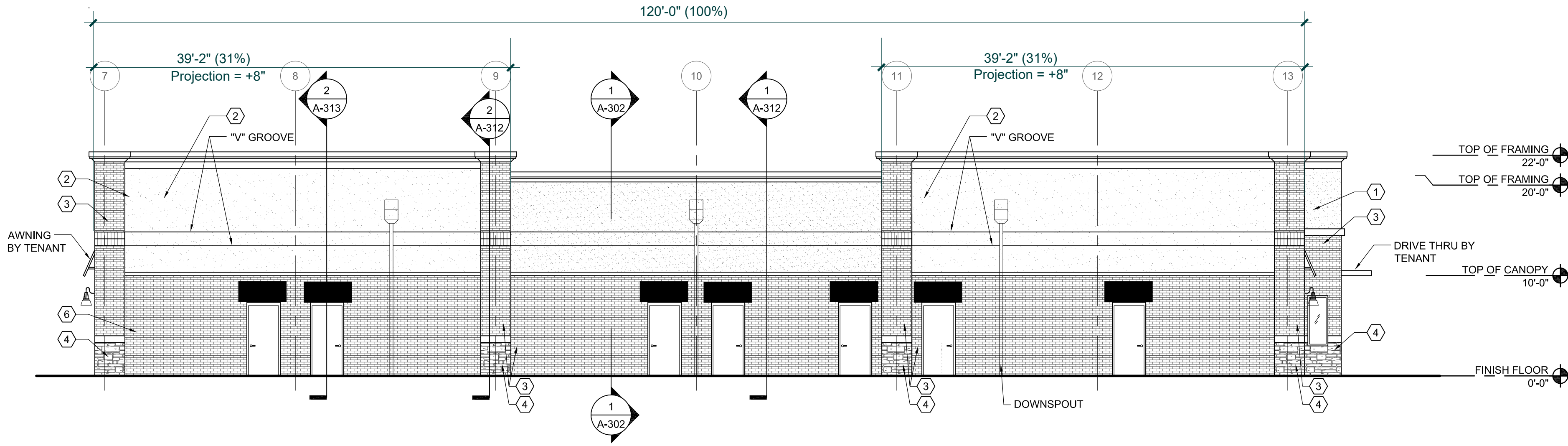
BUILDING 1
WALL PLANE
ARTICULATION
A-201



BUILDING TWO - WALL PLANE ARTICULATION

NORTH ELEVATION

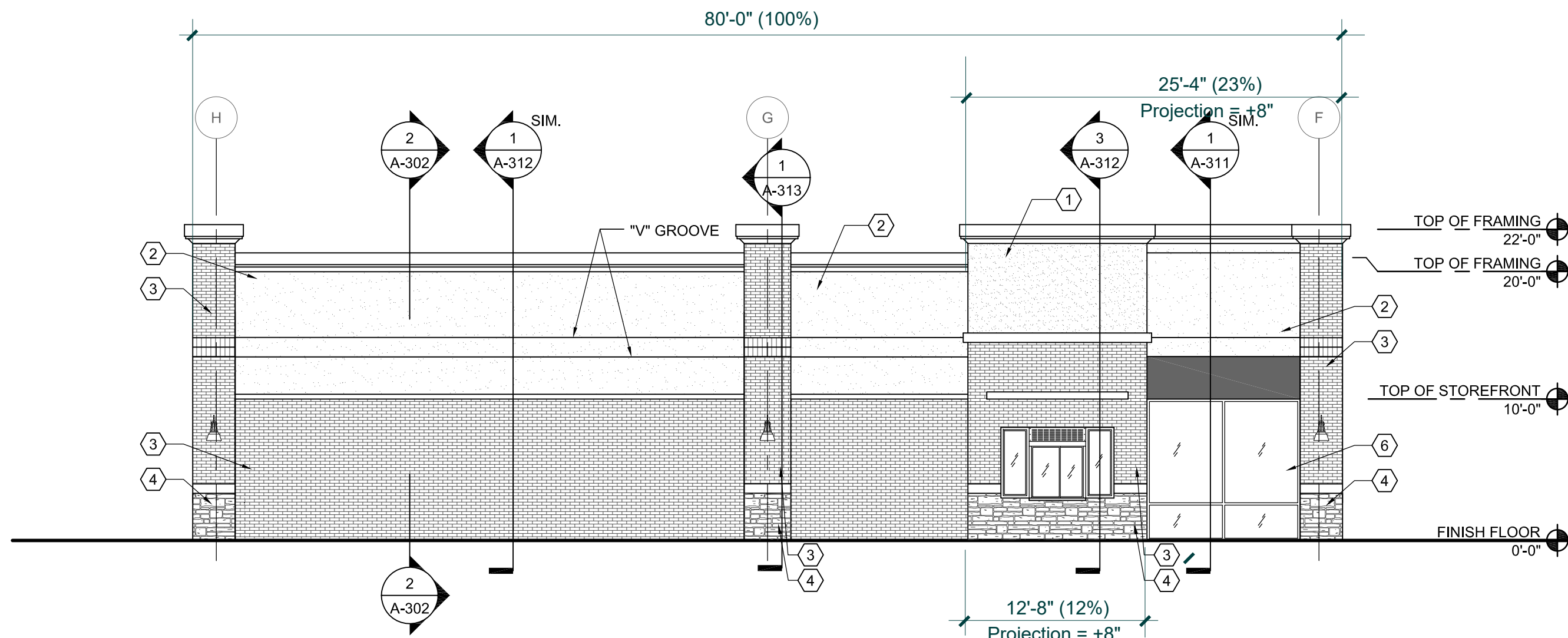
SCALE: 1/8" = 1'-0"



BUILDING TWO - WALL PLANE ARTICULATION

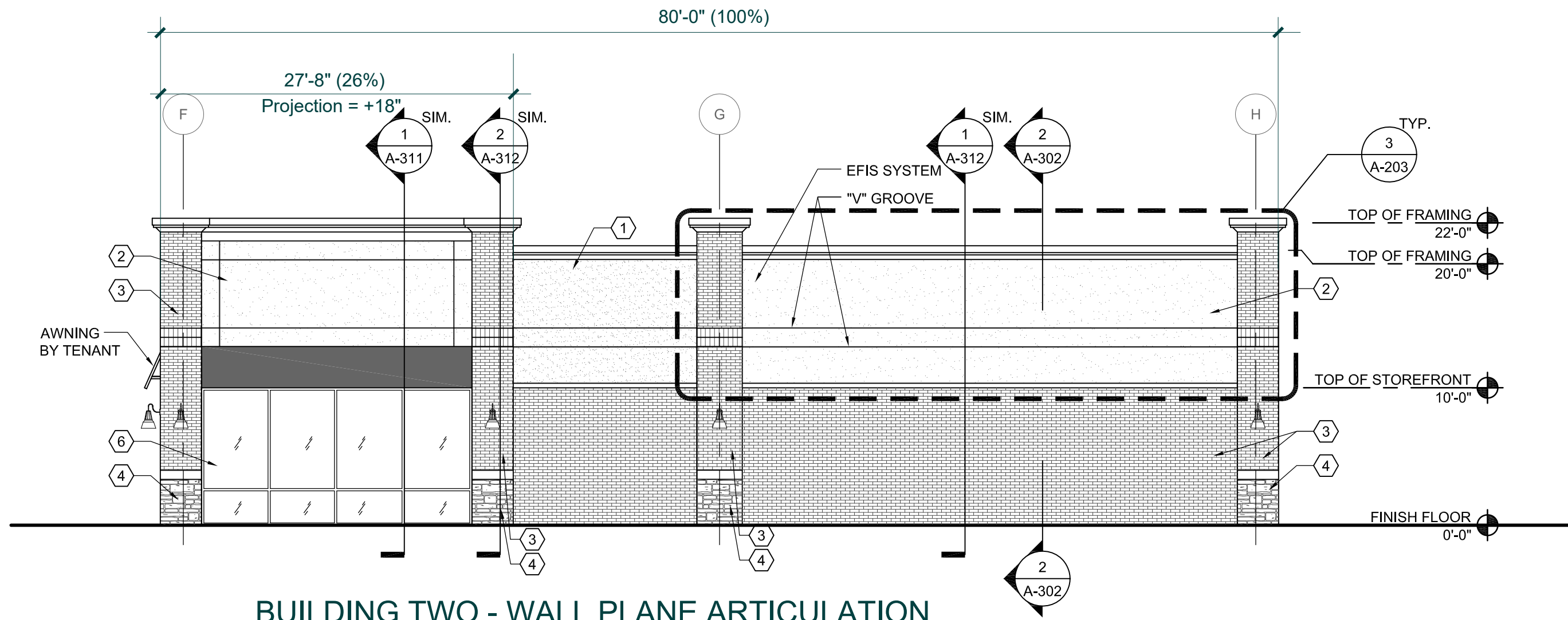
SOUTH ELEVATION

SCALE: 1/8" = 1'-0"



BUILDING TWO - WALL PLANE ARTICULATION EAST ELEVATION

SCALE: 1/8" = 1'-0"











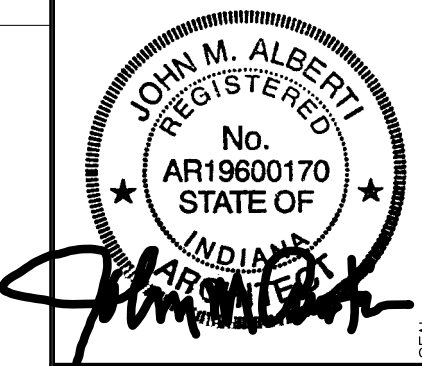
BUILDING TWO - WALL PLANE ARTICULATION

WEST ELEVATION

SCALE: 1/8" = 1'-0"

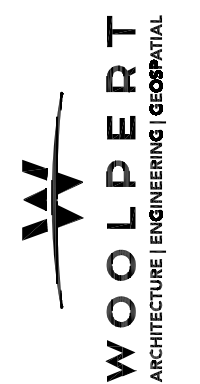
MATERIAL LEGEND

	ECLIS - R MANU: DEVKIT COLOR: 10 VANDIE (OR APPROVED EQUAL)
	ECLIS - G MANU: DEVKIT COLOR: 10 GULL GREY (OR APPROVED EQUAL)
	BRICK VENEER MANU: GENERAL SHALE COLOR: RED PINK SANDWICH (OR APPROVED EQUAL)
	STONE VENEER MANU: REARIN Limestone FALL: REARIN Limestone COLOR: REARIN Limestone (OR APPROVED EQUAL)
	STONE VENEER MANU: REARIN Limestone FALL: REARIN Limestone COLOR: ROCKFORD ESTATE (OR APPROVED EQUAL)
	STONE VENEER MANU: REARIN Limestone FALL: REARIN Limestone COLOR: CLEAR ANODIZED
	STONEPOINT FURNAL: GYRENSAL ALUMIA FRAM: W INSULATED GLAZING
	STONEPOINT FURNAL: GYRENSAL ALUMIA FRAM: W INSULATED GLAZING MANU: T.S.D. SPANER:



PROJECT No:	No.	DATE	DESCRIPTION
078681		03.01.19	50% REVIEW SET
		05.01.19	90% PERMIT & BID SET
DATE			
DES.			
DR.			
CKD.			

**333 North Alabama Street
Suite 200
Indianapolis, IN 46204
317.299.7500
FAX: 317.291.5805**



MCCORDSVILLE MARKETPLACE
WEST BROADWAY
MCCORDSVILLE, INDIANA

SHEET NO.

BUILDING 2
WALL PLANE
ARTICULATION
A-202