



ASPIRE - CR2G



ASPIRE - HR1B



ASPIRE - HR2N



ASPIRE - HR2P



ASPIRE - HR3M



CONTINENTAL - CR202



CONTINENTAL - FH201



CONTINENTAL - HR102



CONTINENTAL - LC201



CONTINENTAL - QA301



DAKOTA - FH202



DAKOTA - FH301



DAKOTA - HR201

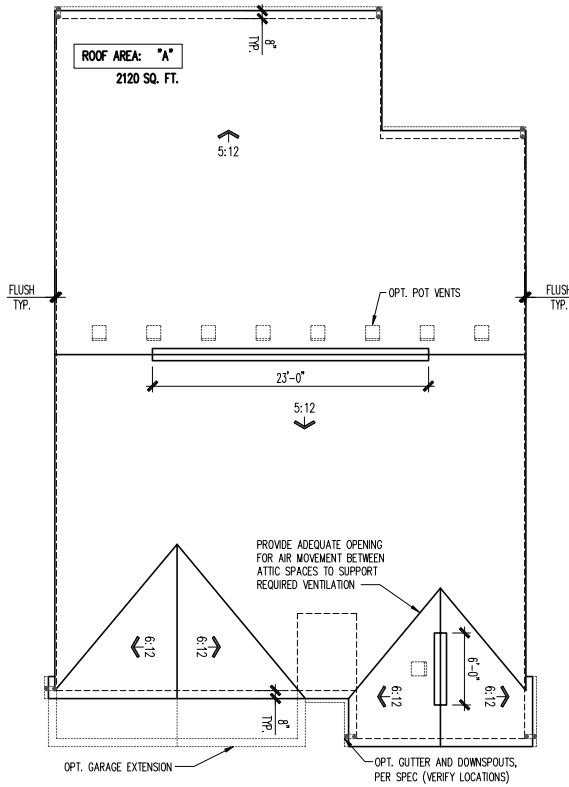


DAKOTA - HR301



DAKOTA - NC201

PLOTTED: January 12, 2024 / Hupha Hoang / A3-CR101 2FS.1.DWG



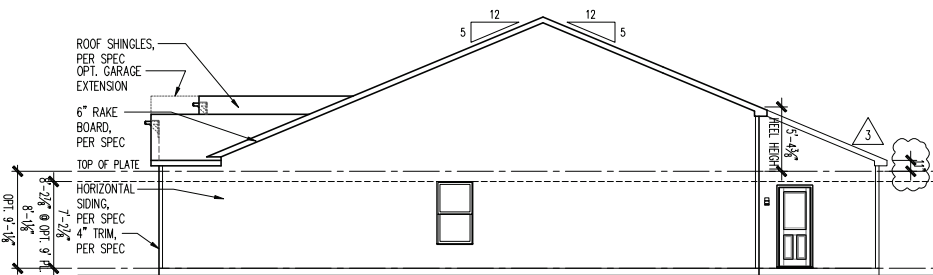
ROOF PLAN

SCALE: 1/8" = 1'-0"



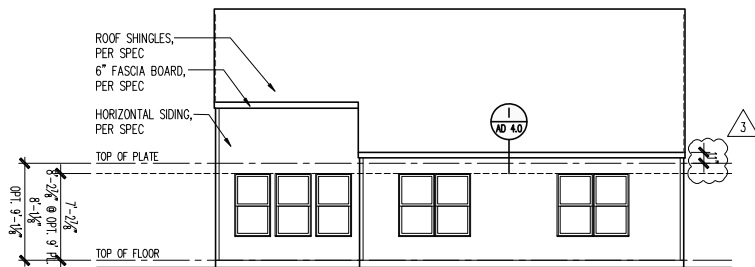
FRONT ELEVATION CR101

SCALE: 1/4" = 1'-0"



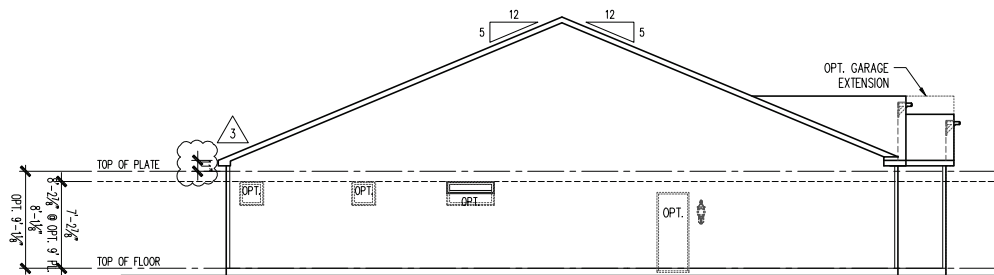
RIGHT ELEVATION

SCALE: 1/8" = 1'-0"



REAR ELEVATION

SCALE: 1/8" = 1'-0"



LEFT ELEVATION

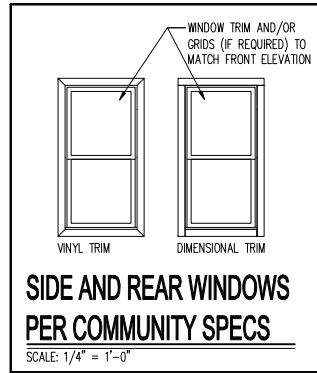
SCALE: 1/8" = 1'-0"

ATTIC VENT SCHEDULE				
CR101 2-CAR FRONT ENTRY	ROOF AREA 'A'	ROOF AREA 'B'	ROOF AREA 'C'	
ATTIC AREA (SF)	2120			
TOTAL NET FREE VENTED AREA REQ.	1018 IN ²			
LOW - REQUIRED (*)	509 IN ²			
LOW - ACTUAL w/ EAVE VENTS (**)	532 IN ² 19 EAVE VENTS			
LOW - ACTUAL w/ CONTINUOUS VENTED SOFFITS (**)	510 IN ² 51 LINEAR FEET			
HIGH - REQUIRED (*)	509 IN ²			
HIGH - ACTUAL w/ POT VENTS (***)	549 IN ² 9 POTS			
HIGH - ACTUAL w/ CONT. RIDGE VENTS (***)	522 IN ² 29 LF			

* REQUIRED NET FREE VENTED AREA IS CALCULATED BY MULTIPLYING THE ATTIC AREA (FT²) BY 1/300 AND THEN MULTIPLYING BY 144 (CONVERTING FT² TO IN²). 50% OF TOTAL NET FREE VENTED AREA IS REQUIRED NEAR THE RIDGE (HIGH) AND 50% IS REQUIRED AT THE SOFFIT (LOW). WHEN BOTH (HIGH) & (LOW) AREN'T PROVIDED, THE REQ'D NET FREE AREA IS 1/150 OF THE ACTUAL AREA INSTEAD.

** ACTUAL NET FREE VENTED SOFFIT AREA IS CALCULATED BY DIVIDING THE REQUIRED (LOW) AREA BY THE MFRS STATED ACTUAL VENTED NET FREE AREA PER VENT:
LOW OPT 1: EAVE VENTS = 28.0 IN²/VENT (OR)
LOW OPT 2: CONT. VENTED SOFFITS = 10.0 IN²/LINEAR FT

*** ACTUAL NET FREE VENTED RIDGE AREA IS CALCULATED BY DIVIDING THE REQUIRED (HIGH) AREA BY THE MFRS STATED ACTUAL VENTED NET AREA PER VENT:
HIGH OPT 1: POT ROOF VENTS = 61.0 IN²/VENT (OR)
HIGH OPT 2: CONT. RIDGE VENTS = 18.0 IN²/LINEAR FT



NOTE: SCALES NOTED ON DRAWINGS RELATE TO FULL SIZE PLOTS ON 22x34 SHEETS - 11x17 SHEETS REPRESENT 1/2 SCALE PLOTS

Midwest Zone Office
1900 E. Golf Road, - Suite 300
Schaumburg, Illinois 60173



Craftsman 101
2 Car Front Entry
Front, Side and Rear Elevations, Roof Plan and Ventilation Schedule

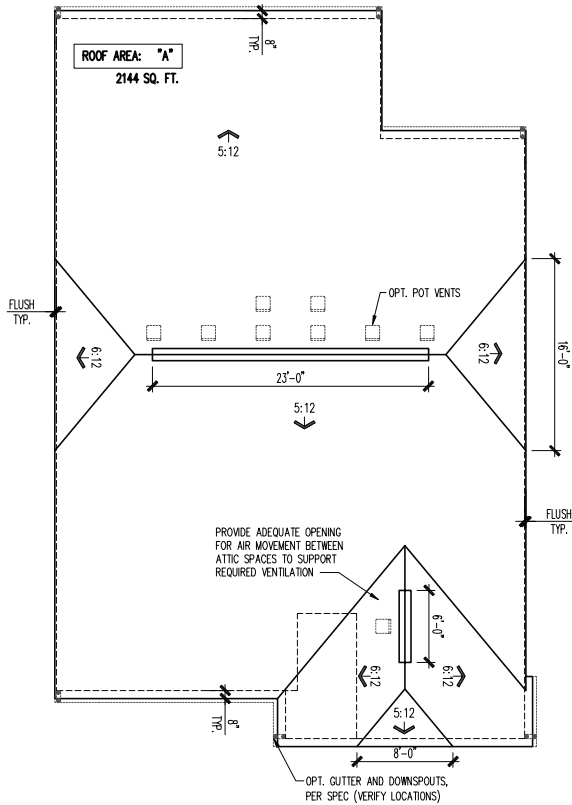
REV #	DATE / DESCRIPTION
10-29-2021	PCR UPDATES
11-11-2022	PCR UPDATES
01/19/2024	PCR REVISIONS

GARAGE HANDING
GARAGE LEFT

PLAN NAME
Fairview
NPC PLAN NUMBER
2884.300
LAWSON PLAN ID

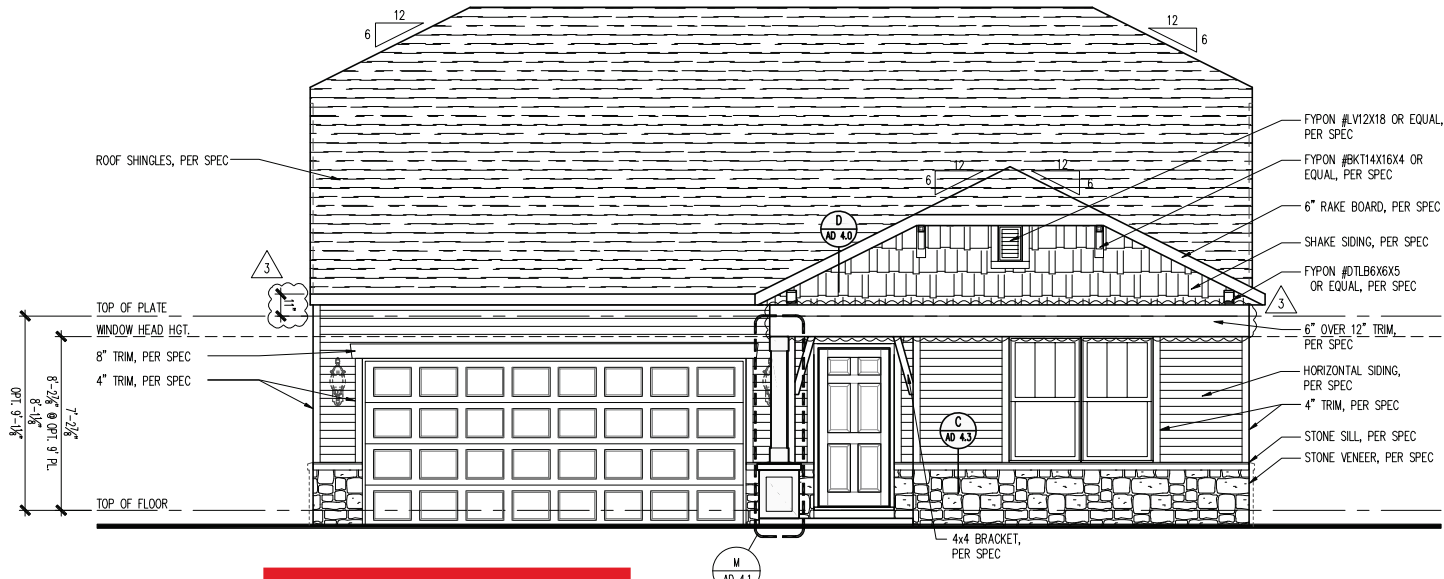
SHEET
A3-CR101
2FS.1

PLOTTED: January 12, 2024 / Hupha Hoang / A3-CR201 2FS.1.DWG



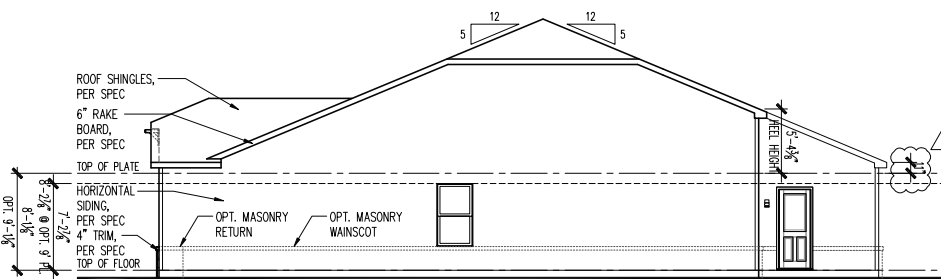
ROOF PLAN

SCALE: 1/8" = 1'-0"



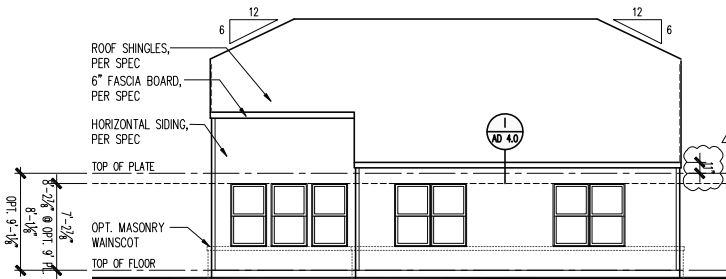
FRONT ELEVATION CR201

SCALE: 1/4" = 1'-0"



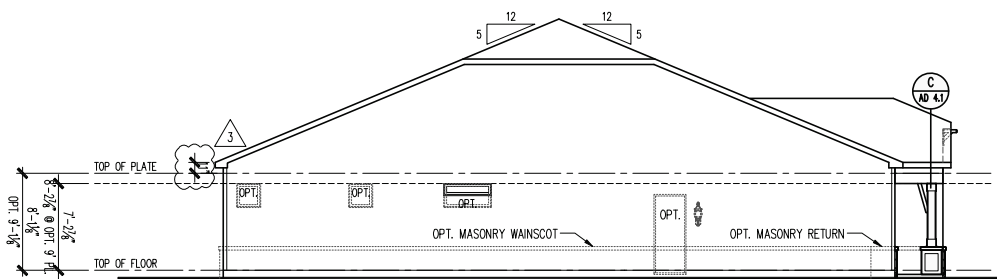
RIGHT ELEVATION

SCALE: 1/8" = 1'-0"



REAR ELEVATION

SCALE: 1/8" = 1'-0"



LEFT ELEVATION

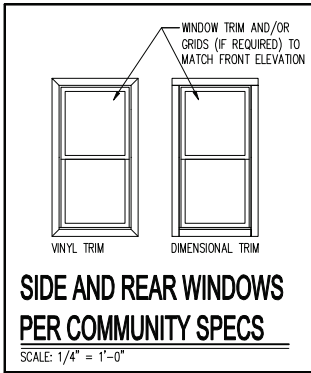
SCALE: 1/8" = 1'-0"

ATTIC VENT SCHEDULE				
CR201 2-CAR FRONT ENTRY	ROOF AREA 'A'	ROOF AREA 'B'	ROOF AREA 'C'	
ATTIC AREA (SF)	2144			
TOTAL NET FREE VENTED AREA REQ.	1029 IN ²			
LOW - REQUIRED (*)	515 IN ²			
LOW - ACTUAL w/ EAVE VENTS (**)	532 IN ² 19 EAVE VENTS			
LOW - ACTUAL w/ CONTINUOUS VENTED SOFFITS (**)	520 IN ² 52 LINEAR FEET			
HIGH - REQUIRED (*)	515 IN ²			
HIGH - ACTUAL w/ POT VENTS (***)	549 IN ² 9 POTS			
HIGH - ACTUAL w/ CONT. RIDGE VENTS (***)	522 IN ² 29 LF			

* REQUIRED NET FREE VENTED AREA IS CALCULATED BY MULTIPLYING THE ATTIC AREA (FT²) BY 1/300 AND THEN MULTIPLYING BY 144 (CONVERTING FT² TO IN²). 50% OF TOTAL NET FREE VENTED AREA IS REQUIRED NEAR THE RIDGE (HIGH) AND 50% IS REQUIRED AT THE SOFFIT (LOW). WHEN BOTH (HIGH) & (LOW) AREN'T PROVIDED, THE REQ'D NET FREE AREA IS 1/150 OF THE ACTUAL AREA INSTEAD.

** ACTUAL NET FREE VENTED SOFFIT AREA IS CALCULATED BY DIVIDING THE REQUIRED (LOW) AREA BY THE MFRS STATED ACTUAL VENTED NET FREE AREA PER VENT:
LOW OPT 1: EAVE VENTS = 28.0 IN²/VENT (OR)
LOW OPT 2: CONT. VENTED SOFFITS = 10.0 IN²/LINEAR FT

*** ACTUAL NET FREE VENTED RIDGE AREA IS CALCULATED BY DIVIDING THE REQUIRED (HIGH) AREA BY THE MFRS STATED ACTUAL VENTED NET AREA PER VENT:
HIGH OPT 1: POT ROOF VENTS = 61.0 IN²/VENT (OR)
HIGH OPT 2: CONT. RIDGE VENTS = 18.0 IN²/LINEAR FT



ENERGYSTAR 3.1 REVISIONS:
ENERGY HEADS ADDED
WINDOW HEADERS REVISED AS CLOUDED BELOW

NOTE: SCALES NOTED ON DRAWINGS RELATE TO FULL SIZE PLOTS ON 22x34 SHEETS - 11x17 SHEETS REPRESENT 1/2 SCALE PLOTS

REV #	DATE / DESCRIPTION
1	10-29-2021 PCR UPDATES
2	11-11-2022 PCR UPDATES
3	01/19/2024 PCR REVISIONS

GARAGE HANDING
GARAGE LEFT

PLAN NAME
Fairview
NPC PLAN NUMBER
2884.300
LAWSON PLAN ID
-

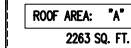
SHEET
A3-CR201
2FS.1

Midwest Zone Office
1900 E. Golf Road, - Suite 300
Schaumburg, Illinois 60173

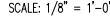
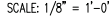
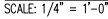


Craftsman 201
2 Car Front Entry
Front, Side and Rear Elevations, Roof Plan and Ventilation Schedule

(c) Copyright Pulte Home Corporation - 2024



SCALE: 1/8" = 1'-0"



* REQUIRED NET FREE VENTED AREA IS CALCULATED BY MULTIPLYING THE ATTIC AREA (FT²) BY 1/300 AND THEN MULTIPLYING BY 144 (CONVERTING FT² TO IN²). 50% OF TOTAL NET FREE VENTED AREA IS REQUIRED NEAR THE RIDGE (HIGH) AND 50% IS REQUIRED AT THE SOFFIT (LOW). WHEN BOTH (HIGH) & (LOW) ARENT PROVIDED, THE REQ'D NET FREE AREA IS 1/150 OF THE ACTUAL AREA INSTEAD.

** ACTUAL NET FREE VENTED SOFFIT AREA IS CALCULATED BY DIVIDING THE REQUIRED (LOW) AREA BY THE MFRS STATED ACTUAL VENTED NET FREE AREA PER VENT:

LOW OPT 1: EAVE VENTS = 28.0 IN²/VENT (OR)
LOW OPT 2: CONT. VENTED SOFFITS = 10.0 IN²/LINEAR FT

*** ACTUAL NET FREE VENTED RIDGE AREA IS CALCULATED BY DIVIDING THE REQUIRED (HIGH) AREA BY THE MFRS STATED ACTUAL VENTED NET AREA PER VENT:

HIGH OPT 1: POT ROOF VENTS = 61.0 IN²/VENT (OR)
HIGH OPT 2: CONT. RIDGE VENTS = 18.0 IN²/LINEAR FT



SCALE: $1/4" = 1'-0"$

ENERGY HEELS ADDED
WINDOW HEADERS REVISED AS CLOUDS BELOW

[illegible]

GARAGE HANDING
GARAGE LEFT

N DRAWINGS REL	PLAN NAME Fairview
	NPC PLAN NUMBER 2884.300
	LAWSON PLAN ID

SHEET
A3-CR202

2FS.1

ATTIC VENT SCHEDULE

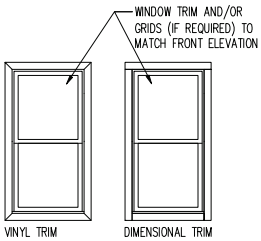
HR101 2-CAR FRONT ENTRY	ROOF AREA 'A'	ROOF AREA 'B'	ROOF AREA 'C'	
ATTIC AREA (SF)	2120			
TOTAL NET FREE VENTED AREA REQ.	1018 IN ²			
LOW - REQUIRED (*)	509 IN ²			
LOW - ACTUAL w/ EAWE VENTS (**)	532 IN ² 19 EAWE VENTS			
LOW - ACTUAL w/ CONTINUOUS VENTED SOFFITS (**)	510 IN ² 51 LINEAR FEET			
HIGH - REQUIRED (*)	509 IN ²			
HIGH - ACTUAL w/ POT VENTS (***)	549 IN ² 9 POTS			
HIGH - ACTUAL w/ CONT. RIDGE VENTS (***)	522 IN ² 29 LF			

* REQUIRED NET FREE VENTED AREA IS CALCULATED BY MULTIPLYING THE ATTIC AREA (FT²) BY 1/300 AND THEN MULTIPLYING BY 144 (CONVERTING FT² TO IN²). 50% OF TOTAL NET FREE VENTED AREA IS REQUIRED NEAR THE RIDGE (HIGH) AND 50% IS REQUIRED AT THE SOFFIT (LOW). WHEN BOTH HIGH & (LOW) ARENT PROVIDED, THE REQ'D NET FREE AREA IS 1/150 OF THE ACTUAL AREA INSTEAD.

** ACTUAL NET FREE VENTED SOFFIT AREA IS CALCULATED BY DIVIDING THE REQUIRED (LOW) AREA BY THE MFRS STATED ACTUAL VENTED NET FREE AREA PER VENT:

LOW OPT 1: EAVE VENTS = 28.0 IN²/VENT (OR)
LOW OPT 2: CONT. VENTED SOFFITS = 10.0 IN²/LINEAR FT

*** ACTUAL NET FREE VENTED RIDGE AREA IS CALCULATED BY DIVIDING THE REQUIRED (HIGH) AREA BY THE MFRS STATED ACTUAL VENTED NET AREA PER VENT:

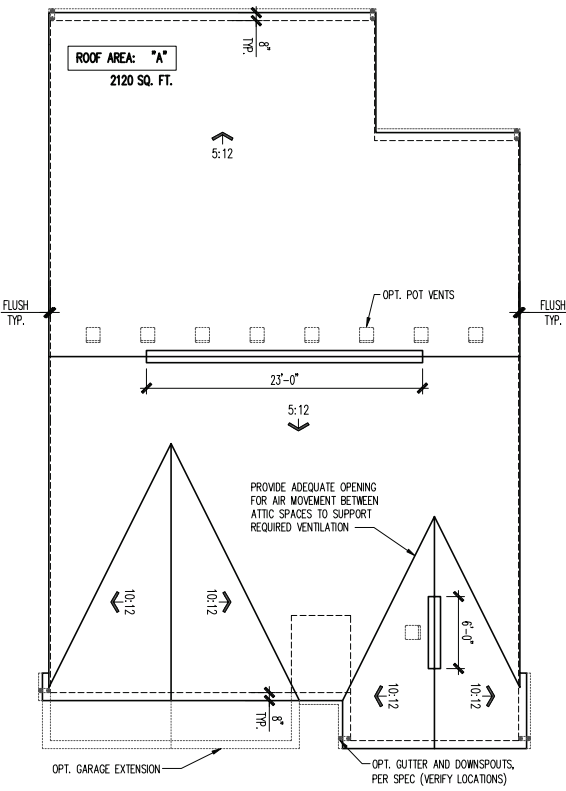


SIDE AND REAR WINDOWS PER COMMUNITY SPECS

SCALE: 1/4" = 1'-0"

ENERGYSTAR 3.1 REVISIONS:

ENERGY HEELS ADDED
WINDOW HEADERS REVISED AS CLOUDED BELOW



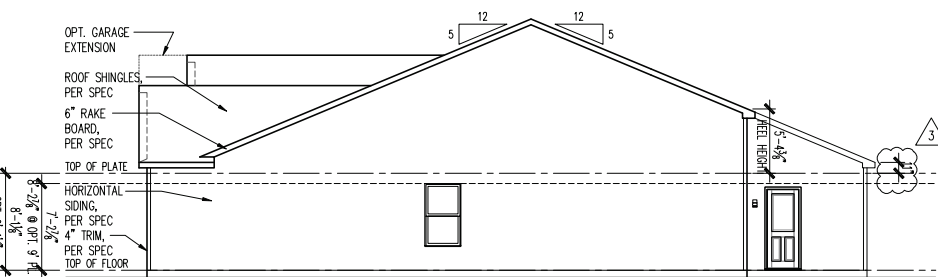
ROOF PLAN

SCALE: $1/8" = 1'-0"$



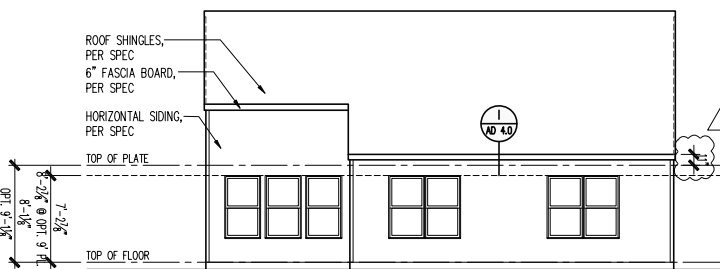
FRONT ELEVATION **HR101**

SCALE: $1/4" = 1'-0"$



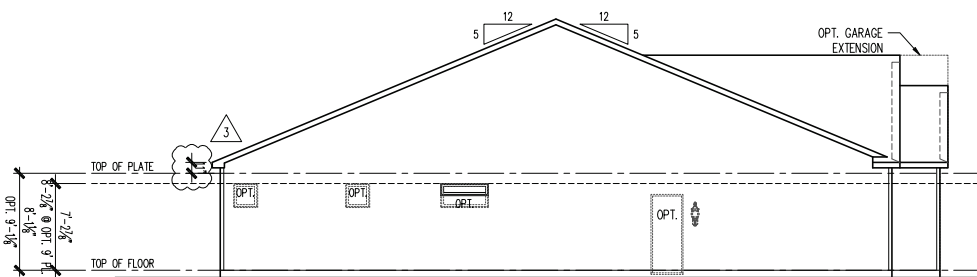
RIGHT ELEVATION

SCALE: 1/8" = 1'-0"



REAR ELEVATION

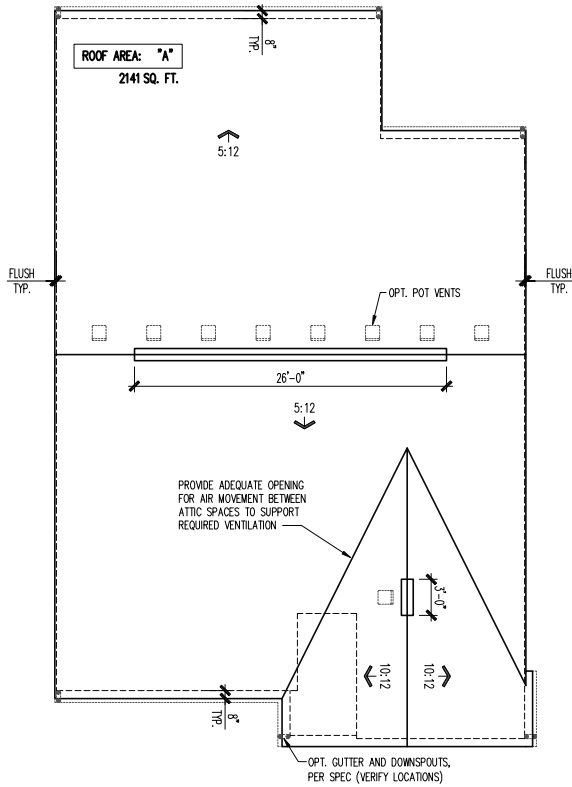
SCALE: 1/8" = 1'-0"



LEFT ELEVATION

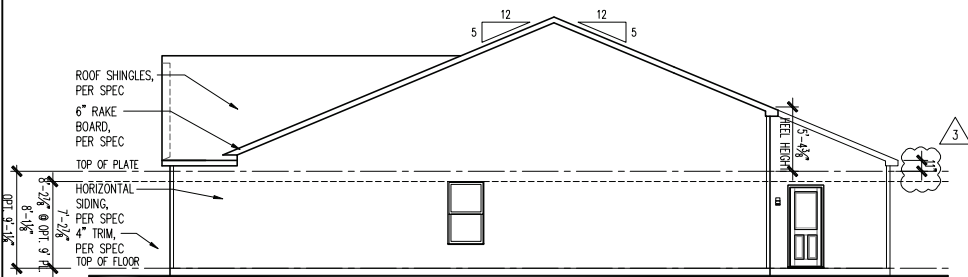
SCALE: 1/8" = 1'-0"

PLOTTED: January 12, 2024 / HighRoads / A3-HR102_2FS.1.DWG



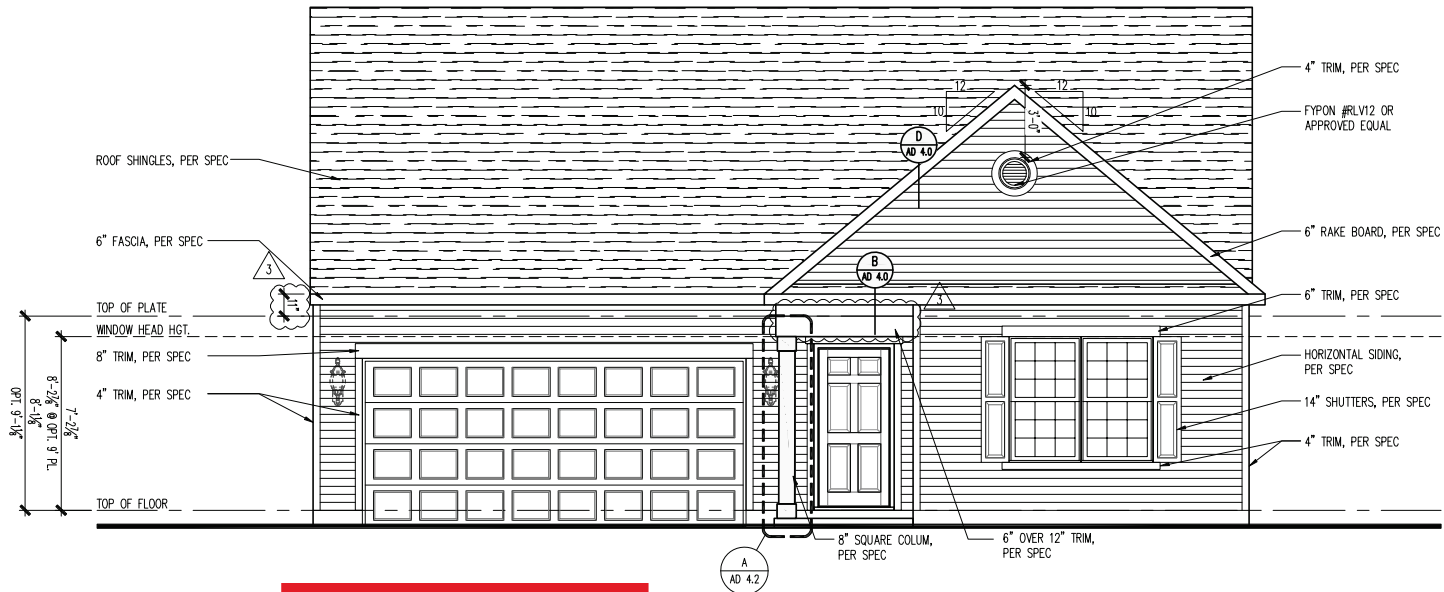
ROOF PLAN

SCALE: 1/8" = 1'-0"



RIGHT ELEVATION

SCALE: 1/8" = 1'-0"



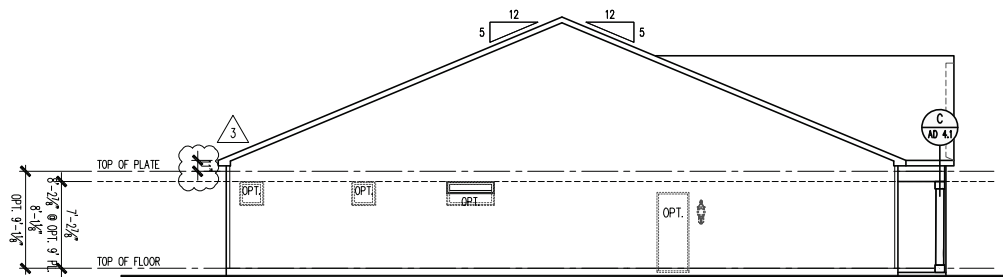
FRONT ELEVATION HR102

SCALE: 1/4" = 1'-0"



REAR ELEVATION

SCALE: 1/8" = 1'-0"



LEFT ELEVATION

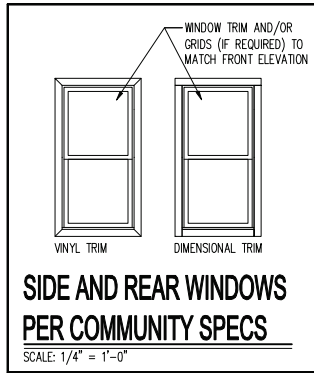
SCALE: 1/8" = 1'-0"

ATTIC VENT SCHEDULE				
HR102 2-CAR FRONT ENTRY	ROOF AREA 'A'	ROOF AREA 'B'	ROOF AREA 'C'	
ATTIC AREA (SF)	2141			
TOTAL NET FREE VENTED AREA REQ.	1028 IN ²			
LOW - REQUIRED (*)	514 IN ²			
LOW - ACTUAL w/ EAVE VENTS (**)	532 IN ² 19 EAVE VENTS			
LOW - ACTUAL w/ CONTINUOUS VENTED SOFFITS (**)	520 IN ² 52 LINEAR FEET			
HIGH - REQUIRED (*)	514 IN ²			
HIGH - ACTUAL w/ POT VENTS (***)	549 IN ² 9 POTS			
HIGH - ACTUAL w/ CONT. RIDGE VENTS (****)	522 IN ² 29 LF			

* REQUIRED NET FREE VENTED AREA IS CALCULATED BY MULTIPLYING THE ATTIC AREA (FT²) BY 1/300 AND THEN MULTIPLYING BY 144 (CONVERTING FT² TO IN²). 50% OF TOTAL NET FREE VENTED AREA IS REQUIRED NEAR THE RIDGE (HIGH) AND 50% IS REQUIRED AT THE SOFFIT (LOW). WHEN BOTH (HIGH) & (LOW) AREN'T PROVIDED, THE REQ'D NET FREE AREA IS 1/150 OF THE ACTUAL AREA INSTEAD.

** ACTUAL NET FREE VENTED SOFFIT AREA IS CALCULATED BY DIVIDING THE REQUIRED (LOW) AREA BY THE MFRS STATED ACTUAL VENTED NET FREE AREA PER VENT:
LOW OPT 1: EAVE VENTS = 28.0 IN²/VENT (OR)
LOW OPT 2: CONT. VENTED SOFFITS = 10.0 IN²/LINEAR FT

*** ACTUAL NET FREE VENTED RIDGE AREA IS CALCULATED BY DIVIDING THE REQUIRED (HIGH) AREA BY THE MFRS STATED ACTUAL VENTED NET AREA PER VENT:
HIGH OPT 1: POT ROOF VENTS = 61.0 IN²/VENT (OR)
HIGH OPT 2: CONT. RIDGE VENTS = 18.0 IN²/LINEAR FT



ENERGYSTAR 3.1 REVISIONS:
ENERGY HEADS ADDED
WINDOW HEADERS REVISED AS CLOUDED BELOW

NOTE: SCALES NOTED ON DRAWINGS RELATE TO FULL SIZE PLOTS ON 22x34 SHEETS - 11x17 SHEETS REPRESENT 1/2 SCALE PLOTS

Midwest Zone Office
1900 E. Golf Road, - Suite 300
Schaumburg, Illinois 60173



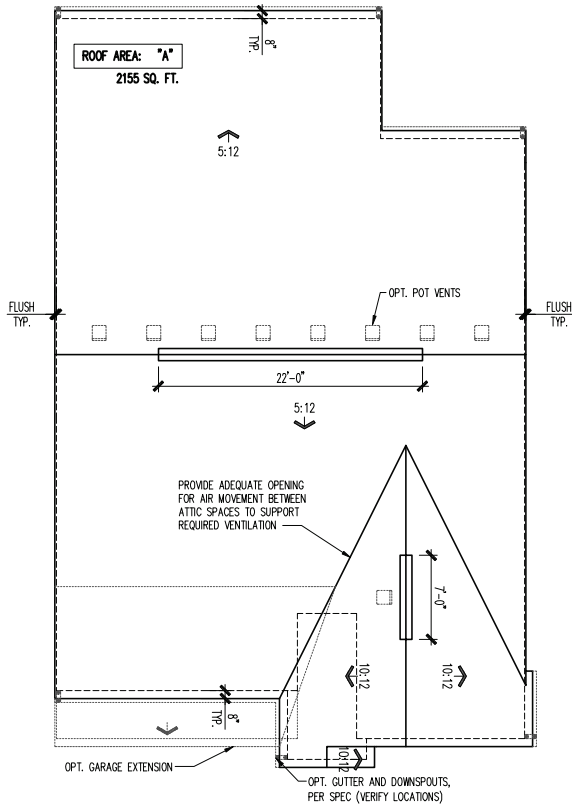
Heartland 102
2 Car Front Entry
Front, Side and Rear Elevations, Roof Plan and Ventilation Schedule

REV #	DATE / DESCRIPTION
10-29-2021	PCR UPDATES
11-11-2022	PCR UPDATES
01/19/2024	PCR REVISIONS

GARAGE HANDING
GARAGE LEFT

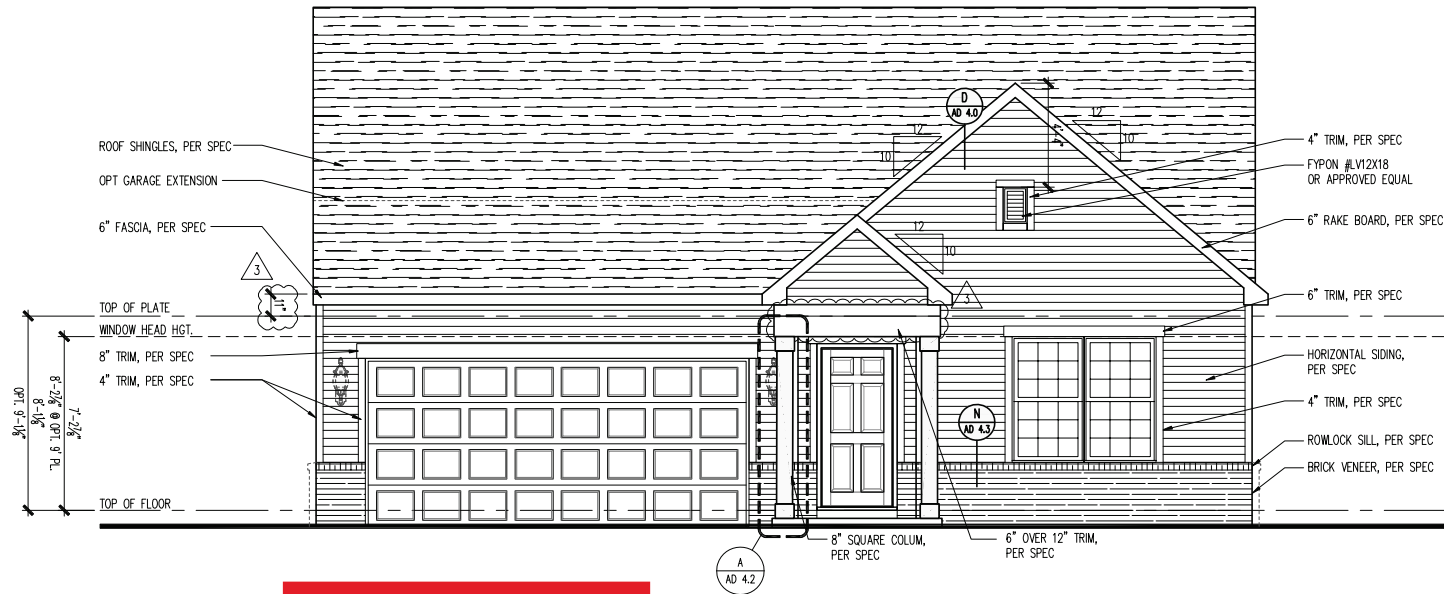
PLAN NAME
Fairview
NPC PLAN NUMBER
2884.300
LAWSON PLAN ID

SHEET
A3-HR102
2FS.1



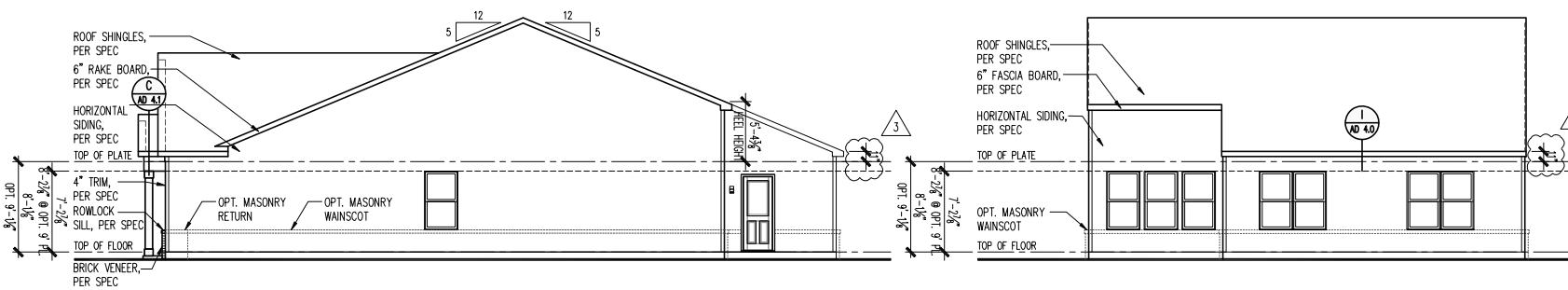
ROOF PLAN

SCALE: 1/8" = 1'-0"



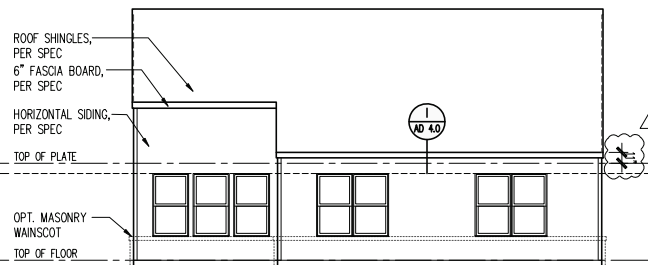
FRONT ELEVATION HR201

SCALE: 1/4" = 1'-0"



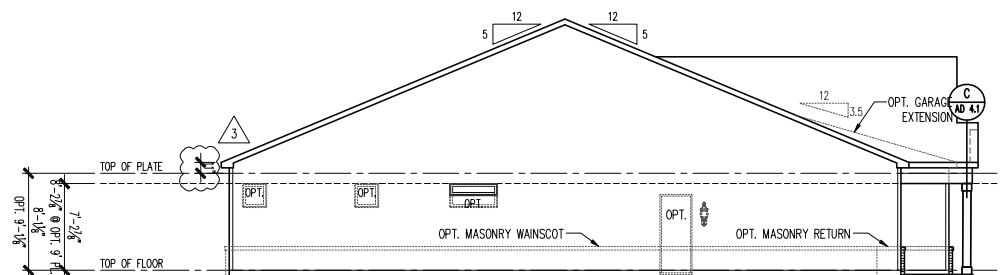
RIGHT ELEVATION

SCALE: 1/8" = 1'-0"



REAR ELEVATION

SCALE: 1/8" = 1'-0"



LEFT ELEVATION

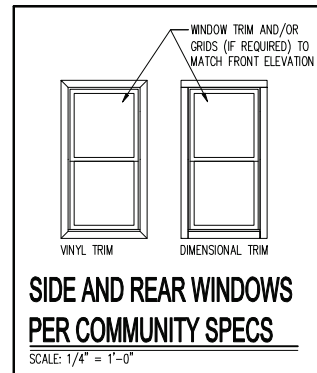
SCALE: 1/8" = 1'-0"

ATTIC VENT SCHEDULE				
HR201 2-CAR FRONT ENTRY	ROOF AREA 'A'	ROOF AREA 'B'	ROOF AREA 'C'	
ATTIC AREA (SF)	2155			
TOTAL NET FREE VENTED AREA REQ.	1034 IN ²			
LOW - REQUIRED (*)	517 IN ²			
LOW - ACTUAL w/ EAVE VENTS (**)	532 IN ² 19 EAVE VENTS			
LOW - ACTUAL w/ CONTINUOUS VENTED SOFFITS (**)	520 IN ² 52 LINEAR FEET			
HIGH - REQUIRED (*)	517 IN ²			
HIGH - ACTUAL w/ POT VENTS (***)	549 IN ² 9 POTS			
HIGH - ACTUAL w/ CONT. RIDGE VENTS (***)	522 IN ² 29 LF			

* REQUIRED NET FREE VENTED AREA IS CALCULATED BY MULTIPLYING THE ATTIC AREA (FT²) BY 1/300 AND THEN MULTIPLYING BY 144 (CONVERTING FT² TO IN²). 50% OF TOTAL NET FREE VENTED AREA IS REQUIRED NEAR THE RIDGE (HIGH) AND 50% IS REQUIRED AT THE SOFFIT (LOW). WHEN BOTH (HIGH) & (LOW) AREN'T PROVIDED, THE REQ'D NET FREE AREA IS 1/150 OF THE ACTUAL AREA INSTEAD.

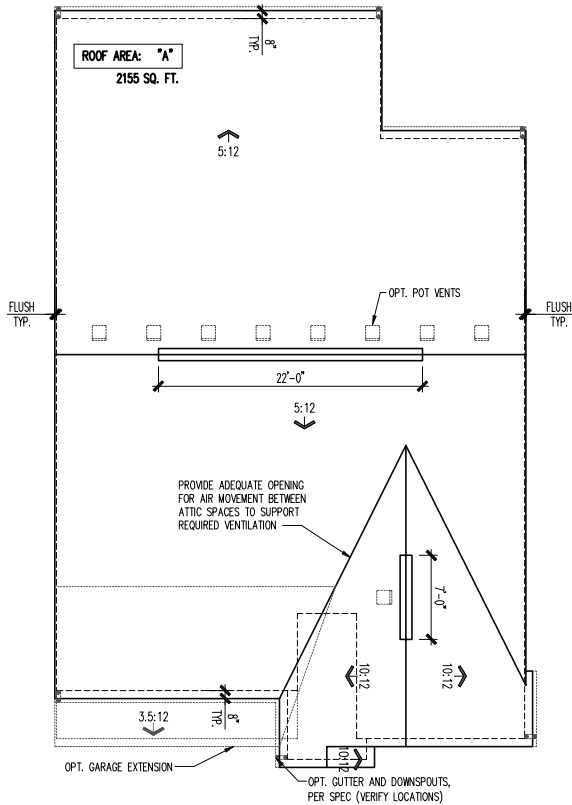
** ACTUAL NET FREE VENTED SOFFIT AREA IS CALCULATED BY DIVIDING THE REQUIRED (LOW) AREA BY THE MFRS STATED ACTUAL VENTED NET FREE AREA PER VENT:
LOW OPT 1: EAVE VENTS = 28.0 IN²/VENT (OR)
LOW OPT 2: CONT. VENTED SOFFITS = 10.0 IN²/LINEAR FT

*** ACTUAL NET FREE VENTED RIDGE AREA IS CALCULATED BY DIVIDING THE REQUIRED (HIGH) AREA BY THE MFRS STATED ACTUAL VENTED NET AREA PER VENT:
HIGH OPT 1: POT ROOF VENTS = 61.0 IN²/VENT (OR)
HIGH OPT 2: CONT. RIDGE VENTS = 18.0 IN²/LINEAR FT



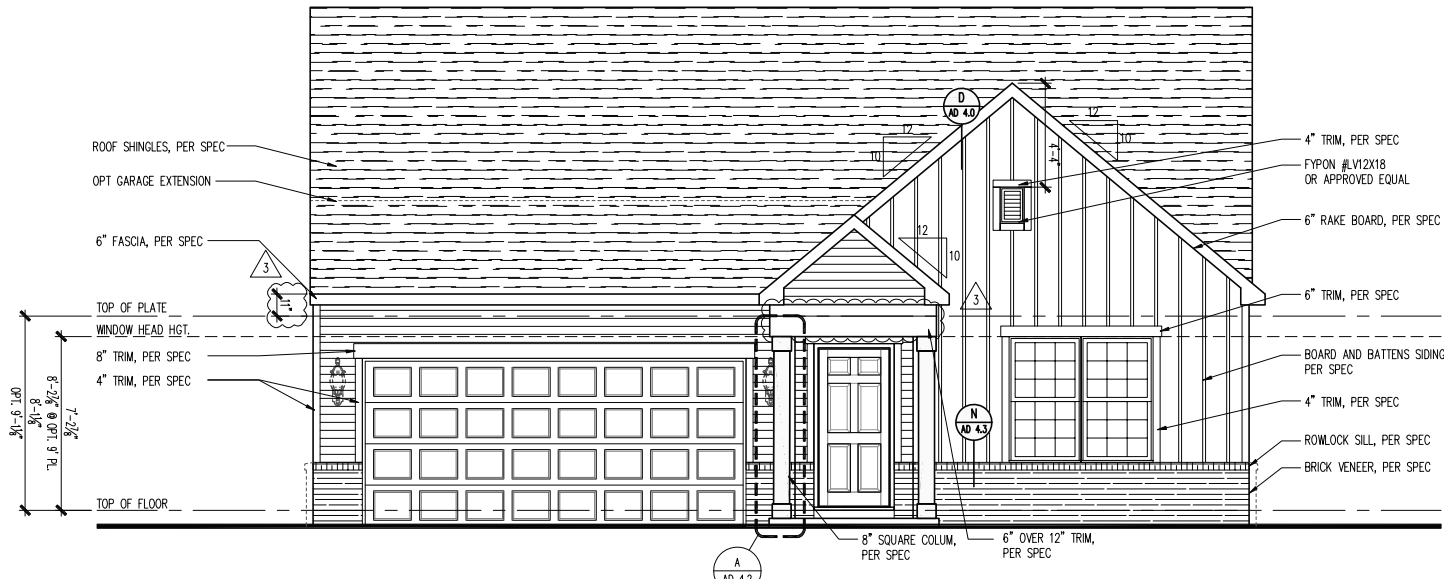
ENERGYSTAR 3.1 REVISIONS:
ENERGY HEELS ADDED
WINDOW HEADERS REVISED AS CLOUDED BELOW

PLOTTED: January 12, 2024 / Huping / A3-HR203_2FS.1.DWG



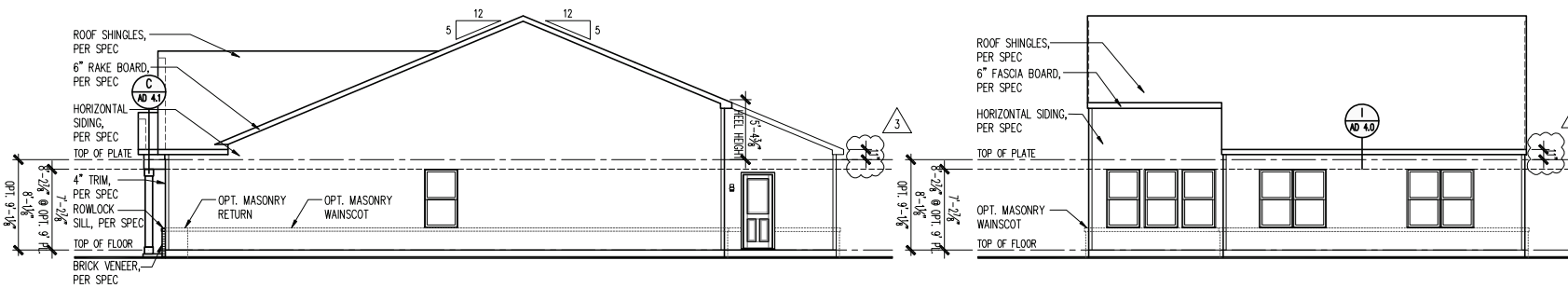
ROOF PLAN

SCALE: 1/8" = 1'-0"



FRONT ELEVATION HR203

SCALE: 1/4" = 1'-0"



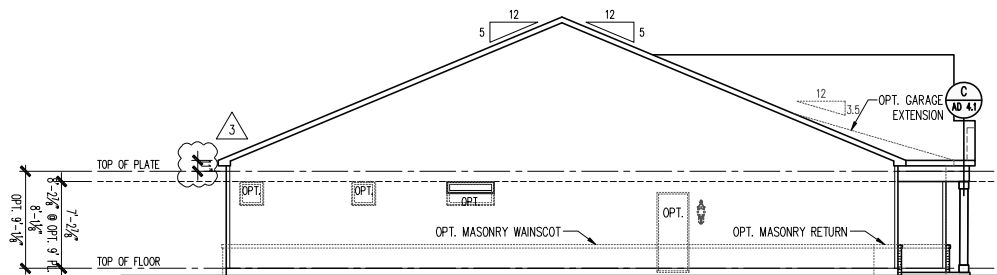
RIGHT ELEVATION

SCALE: 1/8" = 1'-0"



REAR ELEVATION

SCALE: 1/8" = 1'-0"



LEFT ELEVATION

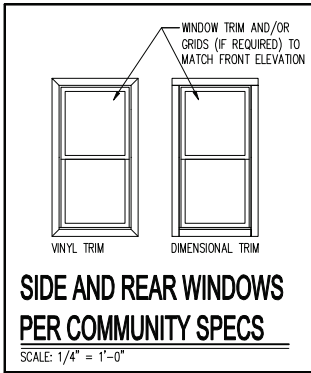
SCALE: 1/8" = 1'-0"

ATTIC VENT SCHEDULE				
HR203 2-CAR FRONT ENTRY	ROOF AREA 'A'	ROOF AREA 'B'	ROOF AREA 'C'	
ATTIC AREA (SF)	2155			
TOTAL NET FREE VENTED AREA REQ.	1034 IN ²			
LOW - REQUIRED (*)	517 IN ²			
LOW - ACTUAL w/ EAVE VENTS (**)	532 IN ² 19 EAVE VENTS			
LOW - ACTUAL w/ CONTINUOUS VENTED SOFFITS (**)	520 IN ² 52 LINEAR FEET			
HIGH - REQUIRED (*)	517 IN ²			
HIGH - ACTUAL w/ POT VENTS (***)	549 IN ² 9 POTS			
HIGH - ACTUAL w/ CONT. RIDGE VENTS (***)	522 IN ² 29 LF			

* REQUIRED NET FREE VENTED AREA IS CALCULATED BY MULTIPLYING THE ATTIC AREA (FT²) BY 1/300 AND THEN MULTIPLYING BY 144 (CONVERTING FT² TO IN²). 50% OF TOTAL NET FREE VENTED AREA IS REQUIRED NEAR THE RIDGE (HIGH) AND 50% IS REQUIRED AT THE SOFFIT (LOW). WHEN BOTH (HIGH) & (LOW) AREN'T PROVIDED, THE REQ'D NET FREE AREA IS 1/150 OF THE ACTUAL AREA INSTEAD.

** ACTUAL NET FREE VENTED SOFFIT AREA IS CALCULATED BY DIVIDING THE REQUIRED (LOW) AREA BY THE MFRS STATED ACTUAL VENTED NET FREE AREA PER VENT:
LOW OPT 1: EAVE VENTS = 28.0 IN²/VENT (OR)
LOW OPT 2: CONT. VENTED SOFFITS = 10.0 IN²/LINEAR FT

*** ACTUAL NET FREE VENTED RIDGE AREA IS CALCULATED BY DIVIDING THE REQUIRED (HIGH) AREA BY THE MFRS STATED ACTUAL VENTED NET AREA PER VENT:
HIGH OPT 1: POT ROOF VENTS = 61.0 IN²/VENT (OR)
HIGH OPT 2: CONT. RIDGE VENTS = 18.0 IN²/LINEAR FT



SIDE AND REAR WINDOWS PER COMMUNITY SPECS

SCALE: 1/4" = 1'-0"

ENERGYSTAR 3.1 REVISIONS:
ENERGY HEELS ADDED
WINDOW HEADERS REVISED AS CLOUDED BELOW

NOTE: SCALES NOTED ON DRAWINGS RELATE TO FULL SIZE PLOTS ON 22x34 SHEETS - 11x17 SHEETS REPRESENT 1/2 SCALE PLOTS

Midwest Zone Office
1900 E. Golf Road, - Suite 300
Schaumburg, Illinois 60173



Heartland 203
2 Car Front Entry
Front, Side and Rear Elevations, Roof Plan and Ventilation Schedule

REV #	DATE / DESCRIPTION
10-29-2021	PCR UPDATES
11-11-2022	PCR UPDATES
01/19/2024	PCR REVISIONS

GARAGE HANDING
GARAGE LEFT

PLAN NAME
Fairview
NPC PLAN NUMBER
2884.300
LAWSON PLAN ID

SHEET
A3-HR203
2FS.1



HA TON - CR2