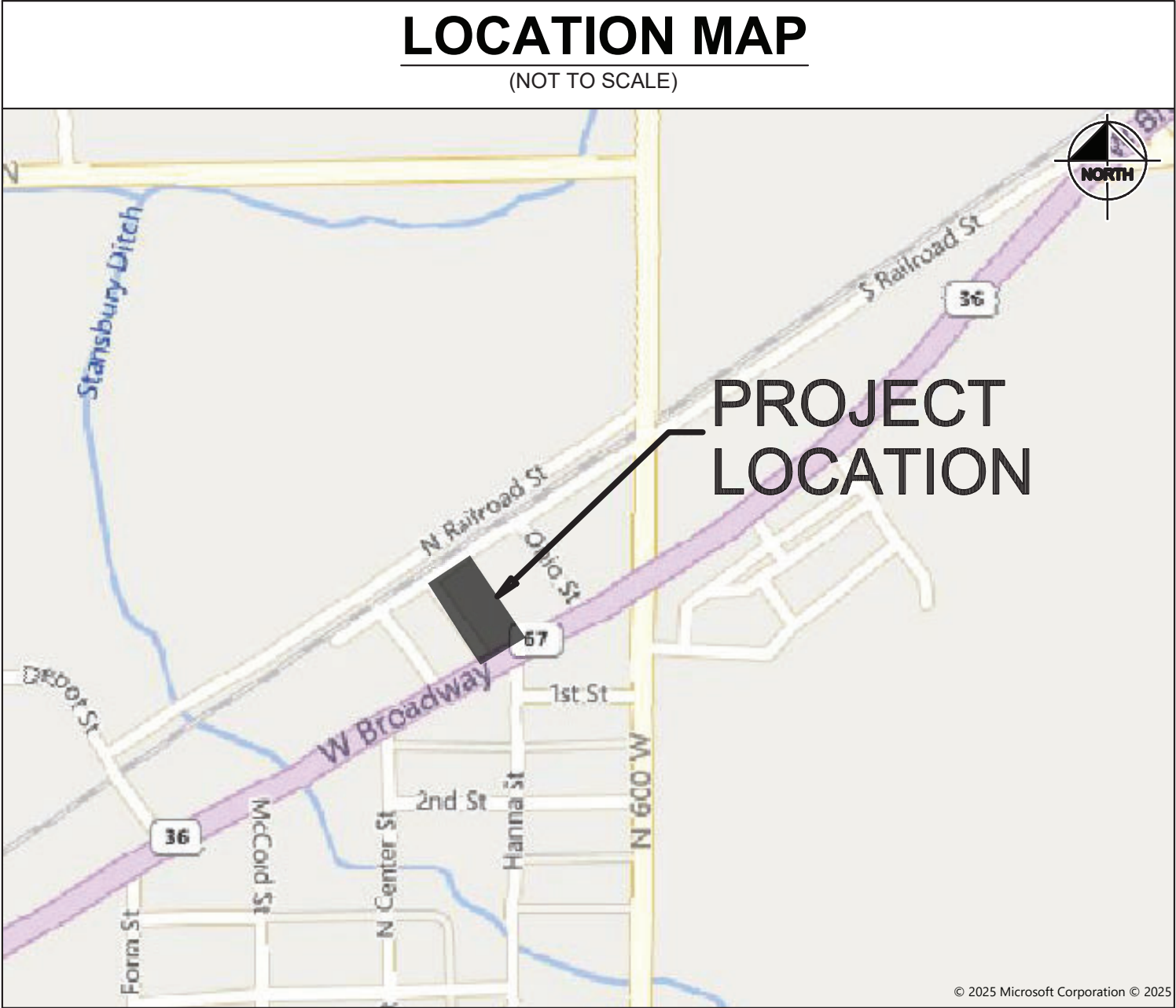


6078 WEST BROADWAY
MCCORDSVILLE, IN 46055



SERVICE / JURISDICTION	COMPANY / DEPT.	ADDRESS	PHONE NUMBER	CONTACT
SANITARY SEWER	MCCORDSVILLE PUBLIC WORKS	6280 W. 800 N. MCCORDSVILLE, IN 46055	317-335-3493	MARK WITSMAN
WATER	CITIZENS ENERGY GROUP/CWA AUTHORITY, INC.	2150 DR. MARTIN LUTHER KING JR. STREET, INDIANAPOLIS, IN 46202	317-927-4351	BRAD HOSTETLER
STORM SEWER	MCCORDSVILLE PUBLIC WORKS	6280 W. 800 N. MCCORDSVILLE, IN 46055	317-335-3493	RON CRIDER
ELECTRICITY	AES INDIANA	1230 W. MORRIS ST. INDIANAPOLIS, IN 46221	317-261-5267	KATIE FORD
NATURAL GAS	CENTERPOINT ENERGY	16222 ALLSONVILLE RD. NOBLESVILLE, IN 46060	317-260-5477	JAY BOSER
TELEPHONE / COMMUNICATIONS	NINESTAR CONNECT	2243 E. MAIN ST. GREENFIELD, IN 46140	317-323-2081	JASON WARRICK
STREETS	TOWN OF MCCORDSVILLE PUBLIC WORKS	6280 W. 800 NORTH MCCORDSVILLE, IN 47201	317-335-3493	RON CRIDER
PLANNING & ZONING	MCCORDSVILLE PLANNING AND BUILDING DEPT.	1200 S. MADISON AVENUE INDIANAPOLIS, IN 46225	317-335-3604	RYAN CRUM

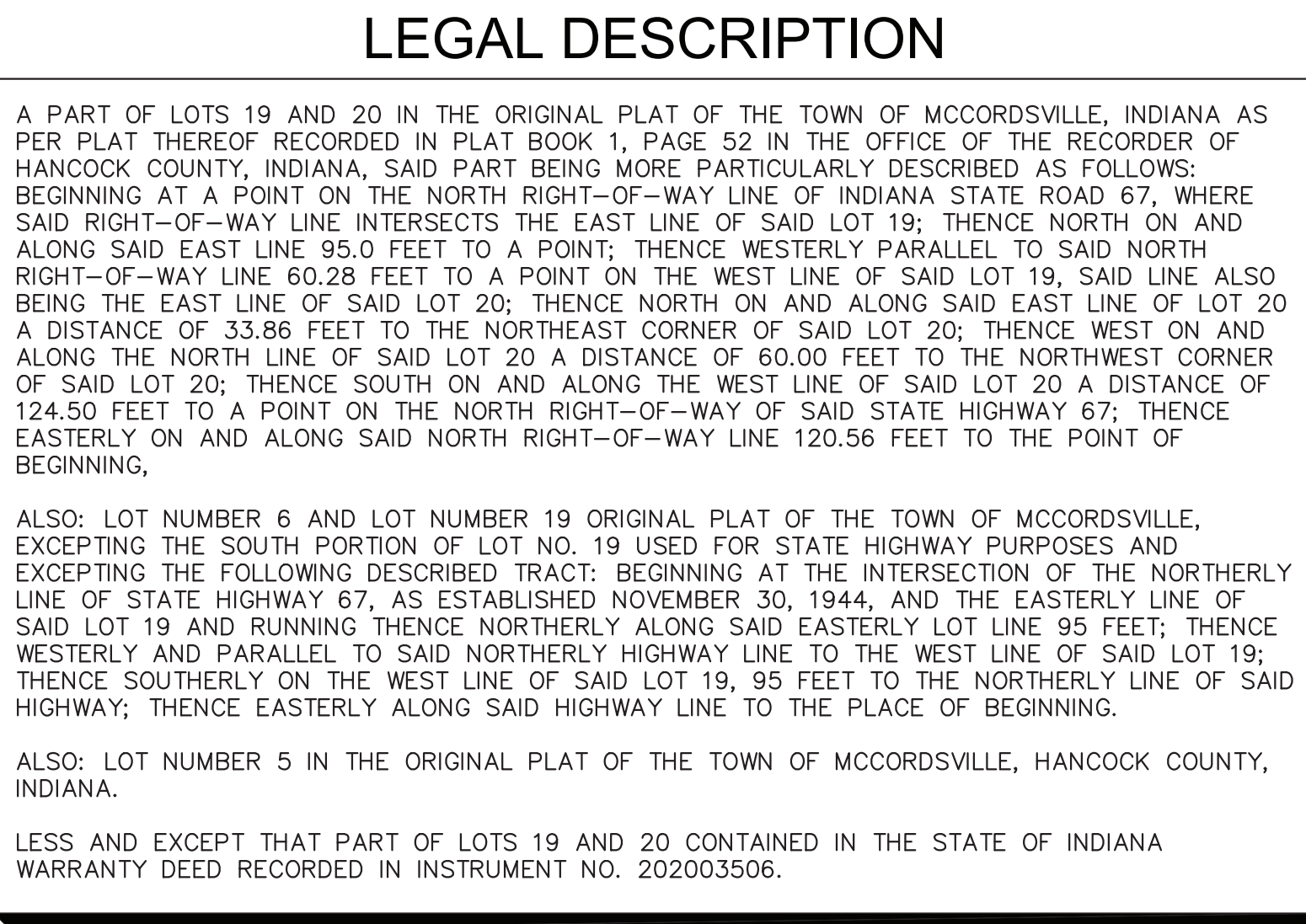
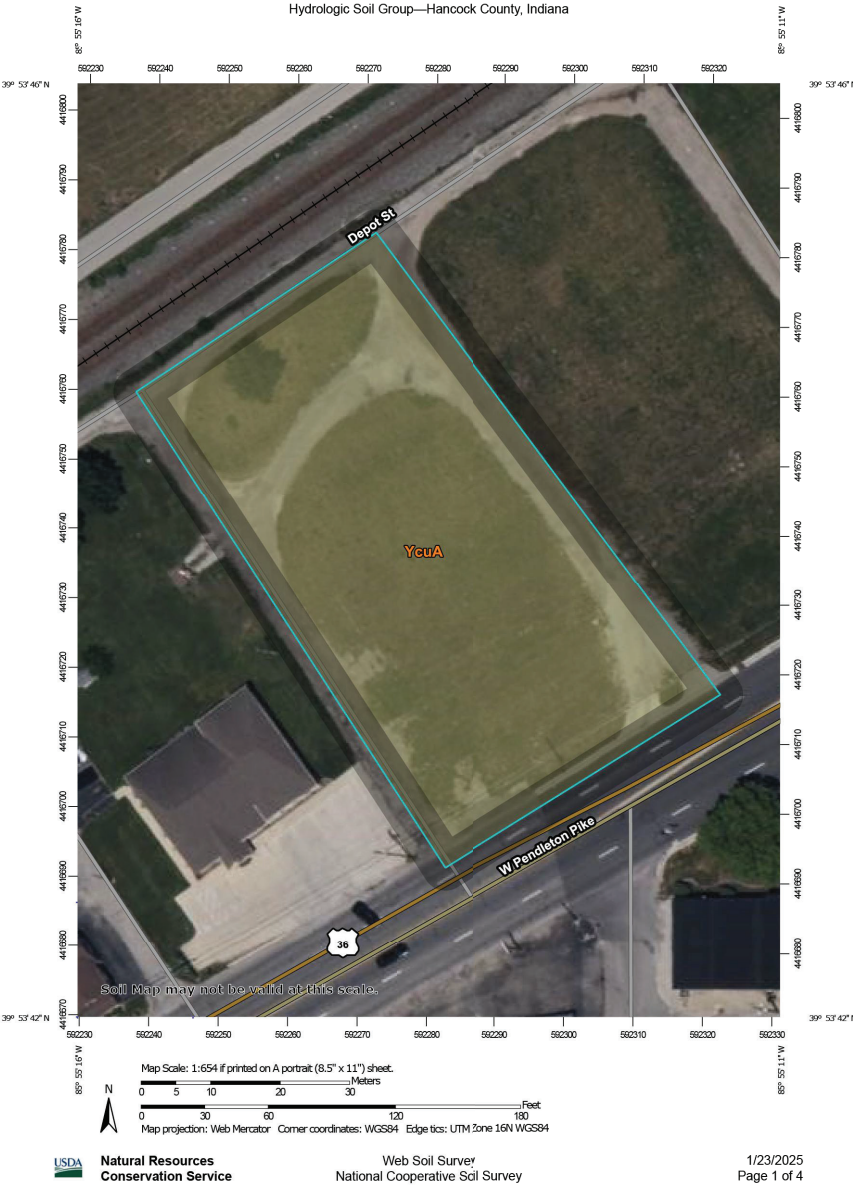
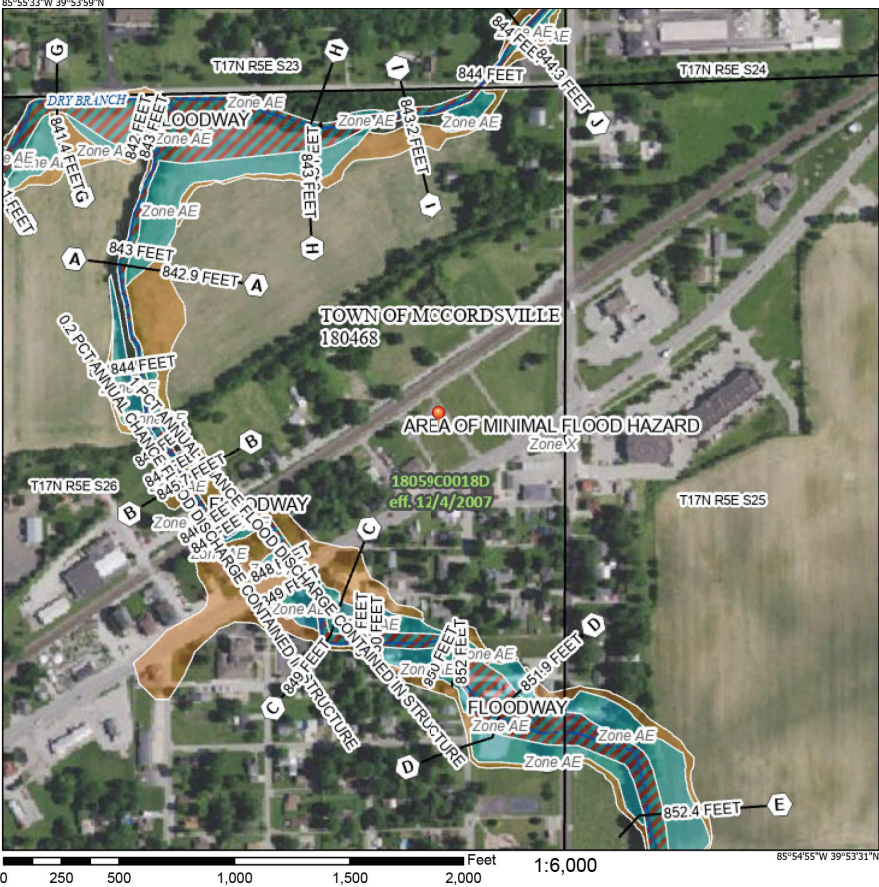
ROLE	COMPANY	ADDRESS	PHONE NUMBER	CONTACT
DEVELOPER	MAP MCCORD, LLC	3801 E. 82ND STREET INDIANAPOLIS, IN 46240	317-597-1714	KELLY BOYLE
CIVIL ENGINEER	KIMLEY-HORN & ASSOCIATES, INC.	500 E. 96TH ST., STE 300, INDIANAPOLIS, IN 46240	317-218-9560	NATHAN BARR, P.E.
LANDSCAPE ARCHITECT	KIMLEY-HORN & ASSOCIATES, INC.	500 E. 96TH ST., STE 300, INDIANAPOLIS, IN 46240	317-218-9560	JAKE SPITZ, PLA
LAND SURVEYOR	KUHN & GUSTAFSON	410 W. OAK ST., STE. 9B, ZIONSVILLE, IN 46077	317-344-2822	KAREN SUTTON, LS



HANCOCK COUNTY

CONSTRUCTION OF A ±2,447 SF STARBUCKS BUILDING ON ±0.66 AC.
PROJECT IS IN SECTION 26 OF T17N, R5E IN THE TOWN OF MCCORDSVILLE
HANCOCK COUNTY, INDIANA

Sheet Number	Sheet Title
C0.0	TITLE SHEET
C1.0	GENERAL SPECIFICATIONS
V1.0	ALTA SURVEY
V1.1	ALTA SURVEY
V1.2	ALTA SURVEY
C2.0	EXISTING CONDITIONS & DEMOLITION PLAN
C3.0	SITE PLAN
C4.0	INITIAL EROSION CONTROL PLAN
C4.1	TEMPORARY EROSION CONTROL PLAN
C4.2	PERMANENT EROSION CONTROL PLAN
C4.3	EROSION CONTROL DETAILS
C4.4	SWPPP
C5.0	GRADING & DRAINAGE PLAN
C6.0	UTILITY PLAN
C7.0	CONSTRUCTION DETAILS
C7.1	CONSTRUCTION DETAILS
E1.0	PHOTOMETRIC PLAN
L1.0	LANDSCAPE PLAN
L1.1	LANDSCAPE NOTES & DETAILS
1-10	MCCORDSVILLE DETAILS



Drawing name: K:\IND_LDEV\170088019_midland atlantic_starbucks_mccordsville in\2 Design\CADD\plansheets\C0.0 - TITLE SHEET.dwg C0.0 Jun 03, 2025 9:54am by: Nathan.Barr

Kimley»Horn
KIMLEY-HORN & ASSOCIATES, INC.
500 EAST 96TH STREET, SUITE 300,
INDIANAPOLIS, IN 46240
WWW.KIMLEY-HORN.COM

AS NOTED
DESIGNED BY BJK
DRAWN BY: EAS
CHECKED BY: NUB

SCALE:

STAMP: NATHAN E. BROWN, REGISTERED PROFESSIONAL ENGINEER, NO. 42147, STATE OF INDIANA, CIVIL ENGINEER. SIGNATURE: Nathan Brown



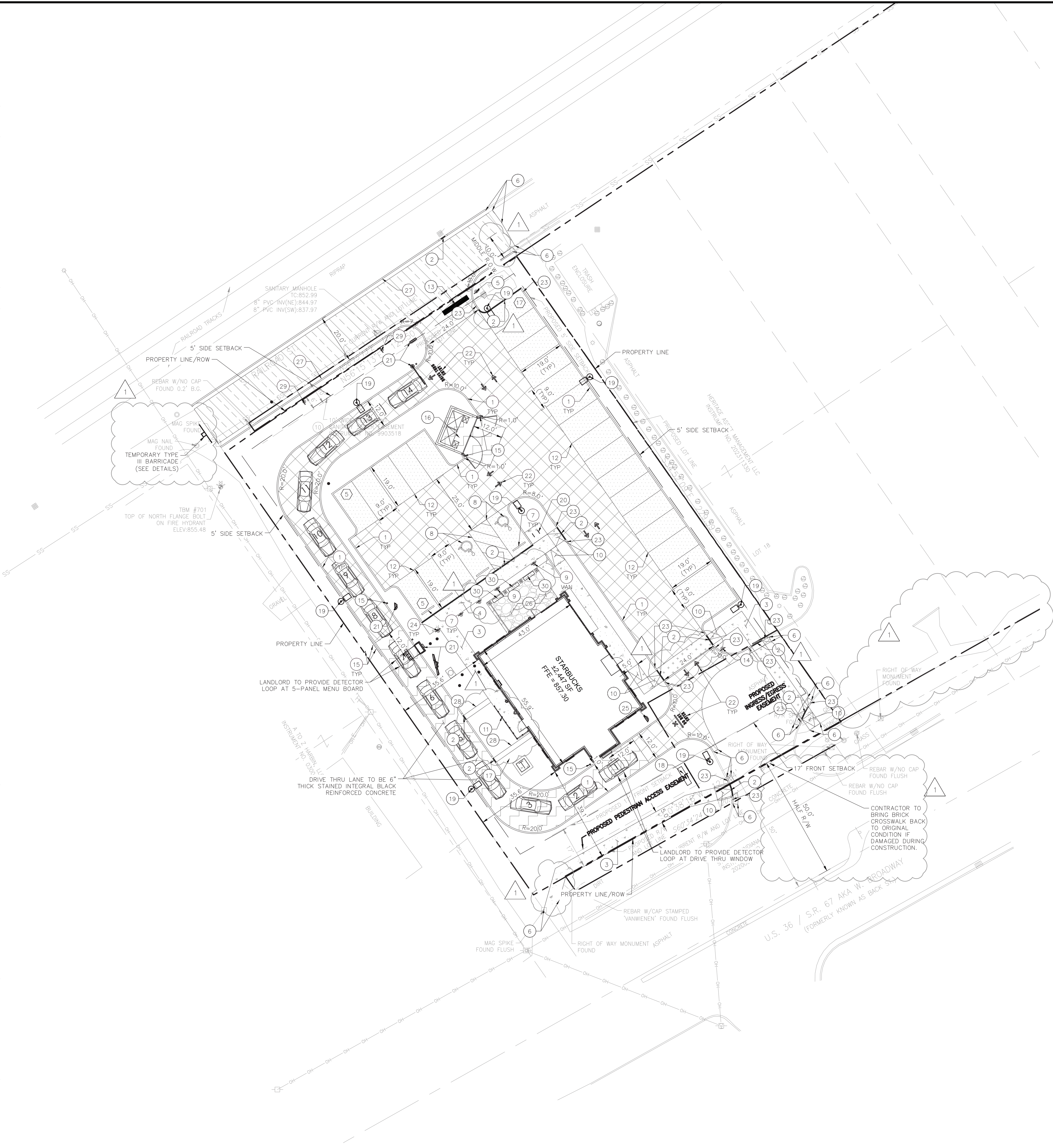
MIDLAND ATLANTIC
PROPERTIES

TITLE SHEET

STARBUCKS
MCCORDSVILLE
6078 W. BROADWAY
MCCORDSVILLE, IN 46055

ORIGINAL ISSUE: 05/01/2025
KHA PROJECT NO. 170088019
SHEET NUMBER C00

Drawing name: K:\IND_LDEV\170088019_Midland Atlantic\Starbucks_McCordsville\IN\2_Design\CAD\PlanSheets\C3.0 - SITE PLAN.dwg C3.0 Jun 03, 2025 10:12am by: Nathan Barr
This document, together with the concepts and designs presented herein, is intended only for the specific purpose and client for which it was prepared. Reuse of and improper reliance on this document without written authorization and adaptation by Kinney-Horn and Associates, Inc. shall be without liability to Kinney-Horn and Associates, Inc.



BENCHMARKS

SITE BENCHMARKS:
(LOCATIONS SHOWN ON SURVEY)

ORIGINATING BENCHMARK H-235-T21
HANCOCK COUNTY BENCHMARK — A BRASS DISK SET IN THE N.W. CORNER OF A CONCRETE BRIDGE LOCATED 12.5 FEET NORTH OF THE CENTERLINE OF C.R. 750 N AND 281 FEET EAST OF C.R. 600 W. ELEVATION = 856.83 (NAV 88 DATUM)

ORIGINATING BENCHMARK Q-20
N.G.S. BENCHMARK — A BRONZE DISK SET IN THE TOP OF AN 8 INCH DIAMETER CONCRETE POST LOCATED 4.5 FEET EAST OF THE EAST EDGE OF THE END OF RUNWAY 36 AND 3.9 FEET EAST OF STROBE LIGHT AND FIBERGLASS WITNESS POST IN BROOKSIDE AIRPORT. ELEVATION = 850.00 (NAV 88 DATUM)

TBM #700 — TOP OF NORTH TRAFFIC POLE BOLT
ELEVATION = 855.05

TBM #701 — TOP OF NORTH FLANGE BOLT ON FIRE HYDRANT
ELEVATION = 855.48

EXISTING LEGEND

○ BOLLARD	○ MISC. U.D.	○ YARD LIGHT
⊕ CONTROL BENCHMARK	○ MONITOR WELL	○ SANITARY CLEANOUT
⊕ ROW MONUMENT	○ GAS MARKER	○ SANITARY MANHOLE
⊕ FLAG POLE	○ GAS METER	○ VENT PIPE
⊕ MAIL BOX	○ GAS VALVE	○ STORM CURB INLET
○ UTILITY POLE	○ AC UNIT	○ STORM INLET
○ POST	○ AREA LIGHT	○ STORM ROOF DRAIN
⊕ SOIL BORING	○ ELECTRICAL BOX	○ STORM DRAIN MANHOLE
⊕ HANDICAP SYMBOL	○ ELECTRICAL HAND HOLE	○ STORM YARD DRAIN
⊕ SIGN	○ ELECTRICAL METER	○ FIRE DEPT CONNECTION
○ CABLE MANHOLE	○ ELECTRICAL MANHOLE	○ FIRE HYDRANT
○ CABLE PEDESTAL	○ ELECTRICAL MARKER	○ IRRIGATION VALVE
○ TELEPHONE PEDESTAL	○ ELECTRICAL TRANSFORMER	○ POST INDICATOR VALVE
○ TELEPHONE HAND HOLE	○ GUY POLE/WIRE	○ WELL
○ TELEPHONE MARKER	○ POWER POLE	○ WATER METER
○ TELEPHONE MANHOLE	○ TRAFFIC SIGNAL POLE	○ WATER VALVE
○ FIBER OPTIC MAKER	○ TRAFFIC MANHOLE	○ TREE / STUMP
○ SWALE	○ TS	○ TOE OF SLOPE
○ X	○ TB	○ TOP OF BANK
○ SS	○ FIB	○ UNDERGROUND FIBER OPTIC
○ SD	○ OHE	○ OVERHEAD ELECTRICAL
○ W	○ GAS	○ UNDERGROUND GAS
○ TREE LINE	○ TEL	○ UNDERGROUND TELEPHONE

SITE NOTES

- ALL DIMENSIONS REFER TO THE FACE OF CURB UNLESS OTHERWISE NOTED.
- BUILDING DIMENSIONS ARE TO THE OUTSIDE FACE OF BUILDING UNLESS OTHERWISE NOTED.
- REFER TO ARCHITECTURAL AND STRUCTURAL PLANS TO VERIFY ALL BUILDING DIMENSIONS, DOOR LOCATIONS, PRIOR TO ORDERING MATERIALS.
- RADI ADJACENT TO PARKING STALL AND NOT DIMENSIONED ON THIS PLAN SHALL BE 3'-FEET, TYPICAL.
- REFER TO ARCHITECTURAL PLANS FOR MONUMENT SIGN DETAILS. SEE MEP PLANS FOR SITE ELECTRICAL DRAWINGS.
- ALL PROPOSED ON-SITE STRIPING SHALL BE PAINTED UNLESS OTHERWISE NOTED.

PAVING & CURB LEGEND

	STANDARD DUTY ASPHALT PAVEMENT SEE CONSTRUCTION DETAILS FOR PAVEMENT SECTION
	HEAVY DUTY ASPHALT PAVEMENT SEE CONSTRUCTION DETAILS FOR PAVEMENT SECTION
	RIGHT OF WAY PAVEMENT SEE SHEET 2 OF MCCORDSVILLE TOWN STANDARD DETAILS FOR PAVEMENT SECTION
	CONCRETE SIDEWALK SEE CONSTRUCTION DETAILS FOR PAVEMENT SECTION
	HEAVY DUTY CONCRETE PAVEMENT SEE CONSTRUCTION DETAILS FOR PAVEMENT SECTION
	PATIO - COVERED PAVERS SEE ARCHITECTURAL PLANS FOR DETAILS
	BRICK PAVEMENT CONTRACTOR TO MATCH EXISTING BRICK CROSSWALK AT PROPOSED CROSSWALKS
	STRAIGHT CURB
	DEPRESSED CURB

SITE SUMMARY

SITE ZONING	=	CN
SITE ACREAGE	=	0.66 AC.±
BUILDING AREA	=	2,447 SF
BUILDING HEIGHT	=	15 FT
TOTAL PARKING SPACES REQUIRED*	=	16 SPACES
PARKING SPACES (ACCESSIBLE) REQUIRED	=	2 SPACES
PARKING SPACES (STANDARD) PROVIDED	=	25 SPACES
PARKING SPACES (ACCESSIBLE) PROVIDED	=	2 SPACES
TOTAL PARKING SPACES PROVIDED	=	27 SPACES
BICYCLE PARKING SPACES REQUIRED**	=	2 SPACES
BICYCLE PARKING SPACES PROVIDED	=	4 SPACES

*1 SPACE FOR EVERY 30 SEATS INSIDE THE RESTAURANT PER MCCORDSVILLE ZONING ORDINANCE
**1 SPACE FOR EVERY 30 VEHICLE PARKING SPACES WITH A MINIMUM OF 2 BICYCLE PARKING SPACES PER MCCORDSVILLE ZONING ORDINANCE

KEY NOTES

- CONCRETE CURB, TYP. (SEE MCCORDSVILLE DETAILS - SHEET 3)
- DEPRESSED CONCRETE CURB (SEE DETAILS)
- CONCRETE SIDEWALK, TYP. (SEE DETAILS)
- COMBINED DEPRESSED CURB AND WALK (SEE DETAILS)
- STOP SIGN (SEE DETAILS)
- CONNECT TO EXISTING PAVEMENT, SIDEWALK, CURB, TYP.
- CONCRETE PARKING BUMPER TYP. (SEE DETAILS)
- ACCESSIBLE PAVEMENT MARKINGS, TYP. (SEE DETAILS)
- ACCESSIBLE PARKING SIGN, TYP. (SEE PLAN FOR VAN LOCATION) (MUTCD R7-8, SEE DETAILS)
- ACCESSIBLE RAMP (SEE DETAILS)
- UTILITY SCREENING (SEE SHEET C7.1 FOR DETAILS)
- 4" WIDE PAVEMENT MARKING, WHITE SOLID LINE, TYP.
- 24" WIDE STOP BAR, TYP. (SEE DETAILS)
- DIRECTIONAL SIGN (SEE DIRECTIONAL SIGN PACKAGE FOR DETAILS)
- CONCRETE BOLLARD, TYP. (SEE DETAILS)
- TRASH ENCLOSURE (SEE ARCHITECTURAL PLANS FOR DETAILS)
- TRANSFORMER PAD (REFER TO UTILITY PROVIDER)
- MONUMENT SIGN (MAX HEIGHT = 6') (SEE ARCHITECTURAL PLANS FOR DETAILS)
- LIGHT POLES SHOWN FOR COORDINATION ONLY (SEE SITE LIGHTING PLAN)
- BIKE RACK (SEE DETAILS)
- DRIVE-THRU EQUIPMENT (SEE ARCHITECTURAL PLANS FOR DETAILS)
- DIRECTIONAL PAVEMENT MARKINGS
- 3'-FT TRANSITION CURB (SEE DETAILS)
- MOBILE ORDER PICK-UP SIGN (SEE ARCHITECTURAL PLANS FOR DETAILS)
- THANK YOU SIGN (SEE DIRECTIONAL SIGN PACKAGE FOR DETAILS)
- PATIO - COLORED PAVERS (SEE ARCHITECTURAL PLANS FOR DETAILS)
- 2" COMBINED CONCRETE CURB AND OUTER (SEE MCCORDSVILLE DETAILS - SHEET 3)
- STONE CHANNEL AND DEPRESSED CURB FOR ROOF DRAINS
- "NO PARKING" SIGN
- 3"x1" PLANTER BOX (SEE LANDSCAPE PLAN FOR SPECIFICATIONS)

Indiana Utilities Protection Service

Call 811

before you dig

GRAPHIC SCALE IN FEET
0 10' 20' 40'

SCALE:	AS NOTED	DESIGNED BY B.K.	DRAWN BY: EAS	CHECKED BY: N.B.
TAC COMMENTS	06/03/25	EAS		
REVISIONS				
NO.				
DATE				
BY				

Kinley-Horn
© 2025 KINLEY-HORN AND ASSOCIATES, INC.
500 EAST 86TH STREET, SUITE 300,
INDIANAPOLIS, IN 46240
WWW.KINLEY-HORN.COM

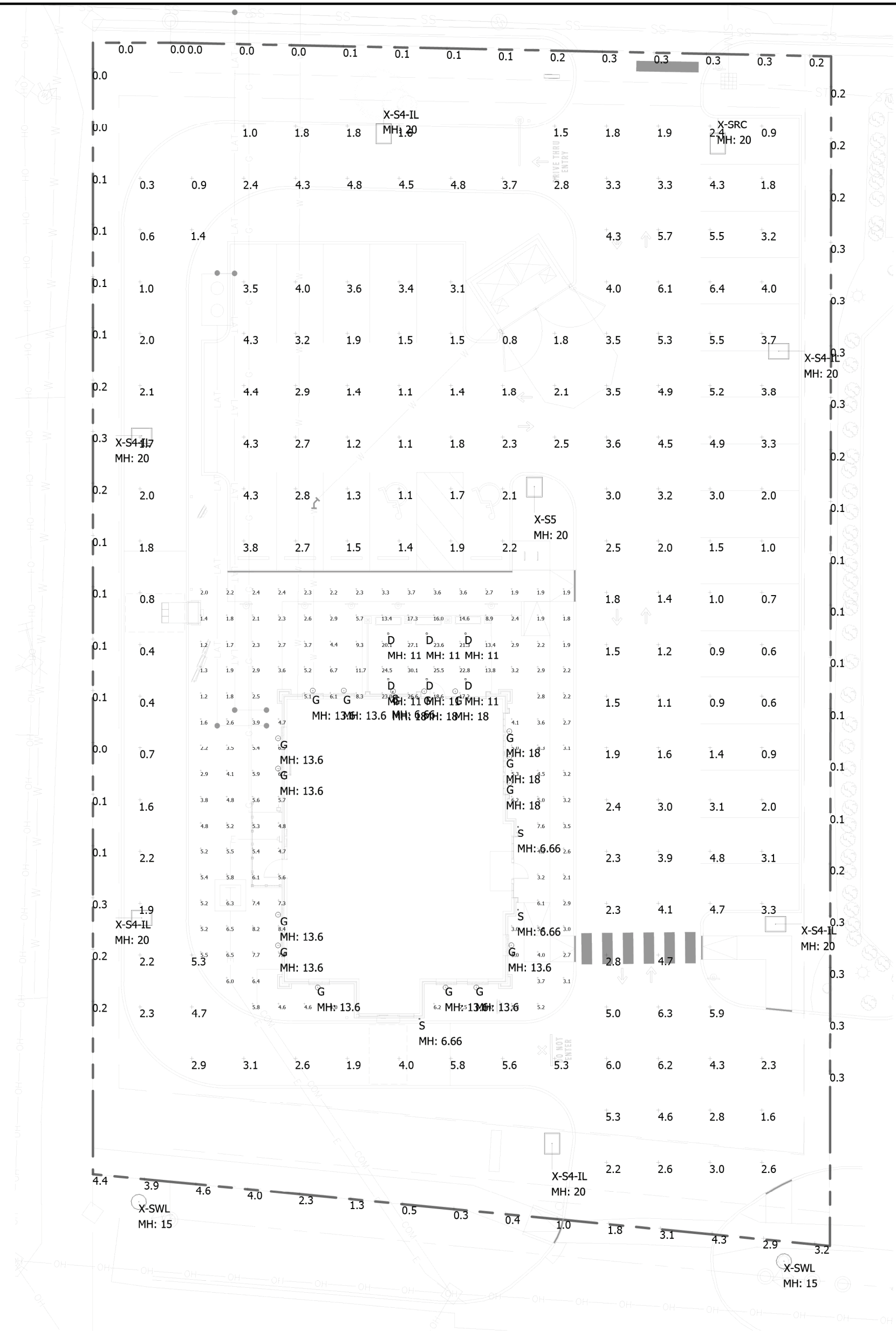
NOT APPROVED FOR CONSTRUCTION
NATHAN BARR
REGISTERED PROFESSIONAL ENGINEER
NO. 15015
STATE OF INDIANA








MIDLAND ATLANTIC PROPERTIES

SITE PLAN

STARBUCKS
MCCORDSVILLE
6078 W. BROADWAY
MCCORDSVILLE, IN 46055

ORIGINAL ISSUE:
05/01/2025
KHA PROJECT NO.
170088019
SHEET NUMBER
C3.0



Luminaire Schedule							
Symbol	Qty	Label	Arrangement	Lum. Lumens	LLF	Lum. Watts	Description
	2	X-SWL	Single	9462	0.900	99	SIG18-PLED-II-36LED-875mA-40K
	1	X-SRC	Single	6132	0.900	39	MRS-LED-06L-SIL-RC-50-70CRI
	1	X-S5	Single	9097	0.900	63	MRS-LED-09L-SIL-5W-50-70CRI
	6	X-S4-IL	Single	9457	0.900	111	MRS-LED-15L-SIL-FT-50-70CRI-IL
	4	S	Single	1067	0.900	23.7588	QUOIZEL ABY8407OZ
	16	G	Wall Mount	1574	0.900	12.8	AD-150-17L-UNV-35-CGG6-MBK-LDS96WL
	6	D	Single	1522	0.900	22.12	LDN4 25LM 30K L04 BR LD MVOLT UGZ 90CRI

Calculation Summary							
Label	CalcType	Units	Avg	Max	Min	Avg/Min	Max/Min
_Property Line	Illuminance	Fc	0.16	0.3	0.0	N.A.	N.A.
_Property Line (Bottom ROW)	Illuminance	Fc	2.53	4.6	0.3	8.43	15.33
Calcs Around Bldg	Illuminance	Fc	6.20	30.1	1.2	5.17	25.08
Paved Areas & Drives	Illuminance	Fc	2.80	6.4	0.3	9.33	21.33

- LIGHTING NOTES:**
- Mounting Height = See Drawing
 - Light Loss Factor = 0.90
 - Footcandle Values Calculated @ Grade
 - Reflectance Values - 80/50/20 (office spaces)
50/30/20 (warehouse areas)

National Lighting Vendor:
For pricing and technical assistance contact:
Russ Miller of CBMC INC, tel# 317-697-7510,
rmiller@cbmcinc.com

All electrical work shall comply with National, State, and Local codes including and not limited to the National Electric Code, NFPA 101 Life Safety Code, ASHREA and /or IECC Energy Codes.

The information contained in this document is proprietary to CBMC Lighting Solutions. This document is prepared for a specific site and incorporates calculations based on data available from the client at this time. By accepting and using this document, the recipient agrees to protect its contents from further dissemination, (other than that within the organization necessary to evaluate such specification) without the written permission of CBMC Lighting Solutions. the contents of this document are not to be reproduced or copied in whole or in part without the written permission of CBMC Lighting Solutions. **copyright © 2018 CBMC Lighting Solutions all rights reserved.**



5855 KOPETSKY DR. SUITE G. | INDIANAPOLIS, IN 46217
317-780-8350| WWW.CBMCINC.COM

SEE MORE



This lighting pattern represents illumination levels calculated from laboratory data taken under controlled conditions in accordance with IESNA approved methods. Actual performance of any manufacturer's luminaire may vary due to variation in electrical voltage, tolerance in lamps and LED lumen package, location adjustments, and other variable field conditions.

Contractor to check and verify all dimensions on site before commencing any work shown.

McCordsville - Starbucks Exterior

SITE LAYOUT

Scale:	1" = 20'	Drawing No:	LP1
Date:	5/29/25	Project No:	
Drawn By:	SJM		

CB27610-SITE-4

E 1.0

LANDSCAPE NOTES

1. THE LANDSCAPE CONTRACTOR SHALL BE RESPONSIBLE FOR INSTALLING MATERIALS AND PLANTS SHOWN ON THE LANDSCAPE PLAN. THE CONTRACTOR IS RESPONSIBLE FOR THE COST TO REPAIR UTILITIES, ADJACENT LANDSCAPE, PUBLIC AND PRIVATE PROPERTY THAT IS DAMAGED BY THE CONTRACTOR OR THEIR SUBCONTRACTOR'S OPERATIONS DURING INSTALLATION OR DURING THE SPECIFIED MAINTENANCE PERIOD. CALL FOR UTILITY LOCATIONS PRIOR TO ANY EXCAVATION AND PLANTING.
2. THE CONTRACTOR SHALL REPORT ANY DISCREPANCY IN PLAN VS. FIELD CONDITIONS IMMEDIATELY TO THE LANDSCAPE ARCHITECT, PRIOR TO CONTINUING WITH THAT PORTION OF WORK.
3. THE CONTRACTOR SHALL BE RESPONSIBLE FOR THE REPAIR OF ANY OF THEIR TRENCHES OR EXCAVATIONS THAT SETTLE.
4. ALL NURSERY STOCK SHALL BE WELL BRANCHED, HEALTHY, FULL, PRE-INOCULATED AND FERTILIZED. DECIDUOUS TREES SHALL BE FREE OF FRESH SCARS. TRUNKS WILL BE WRAPPED IF NECESSARY TO PREVENT SUN SCALD AND INSECT DAMAGE. THE LANDSCAPE CONTRACTOR SHALL REMOVE THE WRAP AT THE PROPER TIME AS A PART OF THIS CONTRACT.
5. ALL NURSERY STOCK SHALL BE GUARANTEED, BY THE CONTRACTOR, FOR ONE YEAR FROM DATE OF FINAL INSPECTION.
6. PLANTING AREA SOIL SHALL BE TOPSOIL FOR ALL TREE, SHRUB, ORNAMENTAL GRASS, PERENNIAL, AND ANNUAL BEDS. AMENDED SOIL SHALL BE PROVIDED AND GRADED BY THE GENERAL CONTRACTOR UP TO A 6" DEPTH BELOW FINISHED GRADE IN TURF AREAS AND A 12" DEPTH IN PLANTING AREAS.
7. PLANTING AREA TOPSOIL SHALL BE AMENDED WITH 25% SPHAGNUM PEATMOSS, 5% HUMUS AND 65% PULVERIZED SOIL. AMENDED TURF AREA SOIL SHALL BE STANDARD TOPSOIL. TOPSOIL SHALL CONFORM TO TECHNICAL SPECIFICATIONS FREE OF HEAVY CLAY, ROCKS, AND DIRT CLOUDS OVER 1 INCH IN DIAMETER, AS WELL AS CONTAIN 3%-5% OF ORGANIC MATTER.
8. SEED/SOD LIMIT LINES ARE APPROXIMATE. CONTRACTOR SHALL SEED/SOD ALL AREAS WHICH ARE DISTURBED BY GRADING WITH THE SPECIFIED SEED/SOD MIXES.
9. CONTRACTOR SHALL STAKE INDIVIDUAL TREE AND SHRUB LOCATIONS AND OUTLINE HERBACEOUS PLANTING AREAS, SHALL ADJUST LOCATIONS WHEN REQUESTED, AND SHALL OBTAIN PROJECT LANDSCAPE ARCHITECT'S ACCEPTANCE PRIOR TO PLANTING.
10. ALL PLANT ID TAGS SHALL BE REMOVED AFTER INSTALLATION.
11. CONTRACTOR SHALL INSTALL SHREDDED HARDWOOD MULCH AT A 3" DEPTH TO ALL TREES, SHRUB, PERENNIAL, AND GROUND COVER AREAS. TREES PLACED IN AREA COVERED BY TURF SHALL RECEIVE A 4 FT WIDE MAXIMUM TREE RING WITH 3" DEPTH SHREDDED HARDWOOD MULCH. A SPADED BED EDGE SHALL SEPARATE MULCH BEDS FROM TURF OR SEEDED AREAS. A SPADED EDGE IS NOT REQUIRED ALONG CURBED EDGES.
12. WEED FABRIC SHALL BE REQUIRED UNDER MULCH.
13. MULCH SHALL NOT BE HELD IN PLACE BY PLASTIC NET, OR SPRAYING OF ANY BINDER MATERIAL OR ASPHALT EMULSION.
14. DO NOT DISTURB THE EXISTING PAVING, LIGHTING, OR LANDSCAPING THAT EXISTS ADJACENT TO THE SITE UNLESS OTHERWISE NOTED ON PLAN.
15. PLANT QUANTITIES SHOWN ARE FOR THE CONVENIENCE OF THE OWNER AND JURISDICTIONAL REVIEW AGENCIES. THE CONTRACTOR IS RESPONSIBLE FOR VERIFYING ALL PLANT QUANTITIES AS DRAWN.
16. THE OWNER'S REPRESENTATIVE MAY REJECT ANY PLANT MATERIALS THAT ARE DISEASED, DEFORMED, OR OTHERWISE NOT EXHIBITING SUPERIOR QUALITY.
17. WEEDING, LANDSCAPE MAINTENANCE, AND WATERING TO BE THE CONTRACTOR'S RESPONSIBILITY DURING CONSTRUCTION. ALL PLANT MATERIALS REQUIRED BY THIS SECTION SHALL BE MAINTAINED AS LIVING VEGETATION AND SHALL BE PROMPTLY REPLACED BY LANDSCAPE CONTRACTOR DURING WARRANTY PERIOD IF THE PLANT MATERIAL HAS DIED PRIOR TO FINAL ACCEPTANCE. PLANTING AREAS SHALL BE KEPT FREE OF TRASH, LITTER, AND WEEDS AT ALL TIMES.
18. THE CONTINUED MAINTENANCE OF ALL REQUIRED LANDSCAPING AFTER WARRANTY PERIOD EXPIRES SHALL BE THE RESPONSIBILITY OF THE OWNER OF THE PROPERTY ON WHICH SAID



Sandal Planter Lite Collection
18"W x 36"H



Lite® Collection

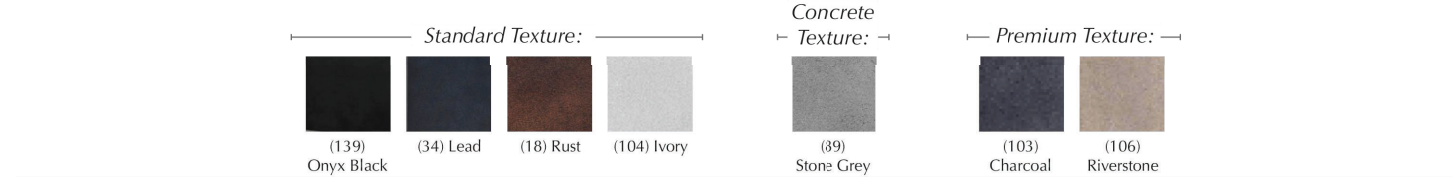
Lite's planters are rated for both indoor and outdoor use and frequently specified for rooftops and terraces, hospitality projects, public space installations, and restaurants. They are a great choice for jobs that do not allow for heavy-weight materials and where large-scale plantings are required. Because of their light weight, fiberglass planters are easier to ship and *material handle on the job*. Fiberglass planters can withstand UV radiation and weathering, and they are resistant to frost and freeze/thaw cycles that cause chips. Additionally, they won't corrode due to exposure or direct contact with soil. There is no need to use plastic liners with Campanian's Lite® planters. Although we recommend that you take advantage of the quick turnaround of our stocked product; these shapes, finishes, and/or sizes are not always right for every job. Campanian's planters can produce a product that is custom to your needs. For more information on our products, all recommended commercial products and CAD files can be viewed at www.campanianinternational.com/products. Our full line can be viewed online at www.campanianinternational.com/liteproducts.

Material	Texture	Item Description	Item # <small>(Values apply to all)</small>	Available Colors <small>(Values apply to all)</small>	Outside Dimension	Inside Top Dimension	Base Dimension	Approx. Weight	Approx. Seal Capacity	Matching Sucker Item #
Fiberglass	Standard	Standard Planter 291836	94-900-13901 94-900-3401 94-900-1801 94-900-10401*	(139) Onyx Black (34) Lava (18) Rust (104) Ivory*	59"L x 17.5"W x 35.5"H	54.25"L x 17.5"W	59"L x 17.5"W	86 lbs	21.5 cu ft.	94-900-13901S* 94-900-3401S* 94-900-1801S* 94-900-10401S*
Fiberglass	Concrete	Standard Planter 291836	94-900-8901	(89) Stone Gray	59"L x 17.5"W x 35.5"H	54.25"L x 17.5"W	59"L x 17.5"W	86 lbs	21.5 cu ft.	94-900-8901S*
Fiberglass	Premium	Standard Planter 291836	94-900-10301 94-900-10601	(103) Charcoal (106) Riverstone	59"L x 17.5"W x 35.5"H	54.25"L x 17.5"W	59"L x 17.5"W	86 lbs	21.5 cu ft.	94-900-10301S* 94-900-10601S*
Fiberglass	Standard	Standard Planter 481836	94-811-13901* 94-811-3401* 94-811-1801* 94-811-10401*	(139) Onyx Black (34) Lava (18) Rust* (104) Ivory*	47.25"L x 17.5"W x 35.5"H	42.5"L x 17.5"W	47.25"L x 17.5"W	70 lbs	17 cu ft.	94-811-13901S* 94-811-3401S* 94-811-1801S* 94-811-10401S*
Fiberglass	Concrete	Standard Planter 481836	94-811-8901*	(89) Stone Gray*	47.25"L x 17.5"W x 35.5"H	42.5"L x 17.5"W	47.25"L x 17.5"W	70 lbs	17 cu ft.	94-811-8901S*
Fiberglass	Premium	Standard Planter 481836	94-811-10301* 94-811-10601*	(103) Charcoal* (106) Riverstone*	47.25"L x 17.5"W x 35.5"H	42.5"L x 17.5"W	47.25"L x 17.5"W	70 lbs	17 cu ft.	94-811-10301S* 94-811-10601S*
Fiberglass	Standard	Standard Planter 361836	94-132-13901 94-132-3401 94-132-1801 (104) Ivory	(139) Onyx Black (34) Lava (18) Rust (104) Ivory	35.5"L x 17.75"W x 35.5"H	32.25"L x 17.75"W	35.5"L x 17.75"W	62 lbs	13 cu ft.	94-132-13901S* 94-132-3401S* 94-132-1801S* 94-132-10401S*
Fiberglass	Concrete	Standard Planter 361836	94-132-8901	(89) Stone Gray	35.5"L x 17.75"W x 35.5"H	32.25"L x 17.75"W	35.5"L x 17.75"W	62 lbs	13 cu ft.	94-132-8901S*
Fiberglass	Premium	Standard Planter 361836	94-132-10301 94-132-10601	(103) Charcoal (106) Riverstone	35.5"L x 17.75"W x 35.5"H	32.25"L x 17.75"W	35.5"L x 17.75"W	62 lbs	13 cu ft.	94-132-10301S* 94-132-10601S*

Note: Each planter is equipped with drainage holes.

AVAILABLE COLORS

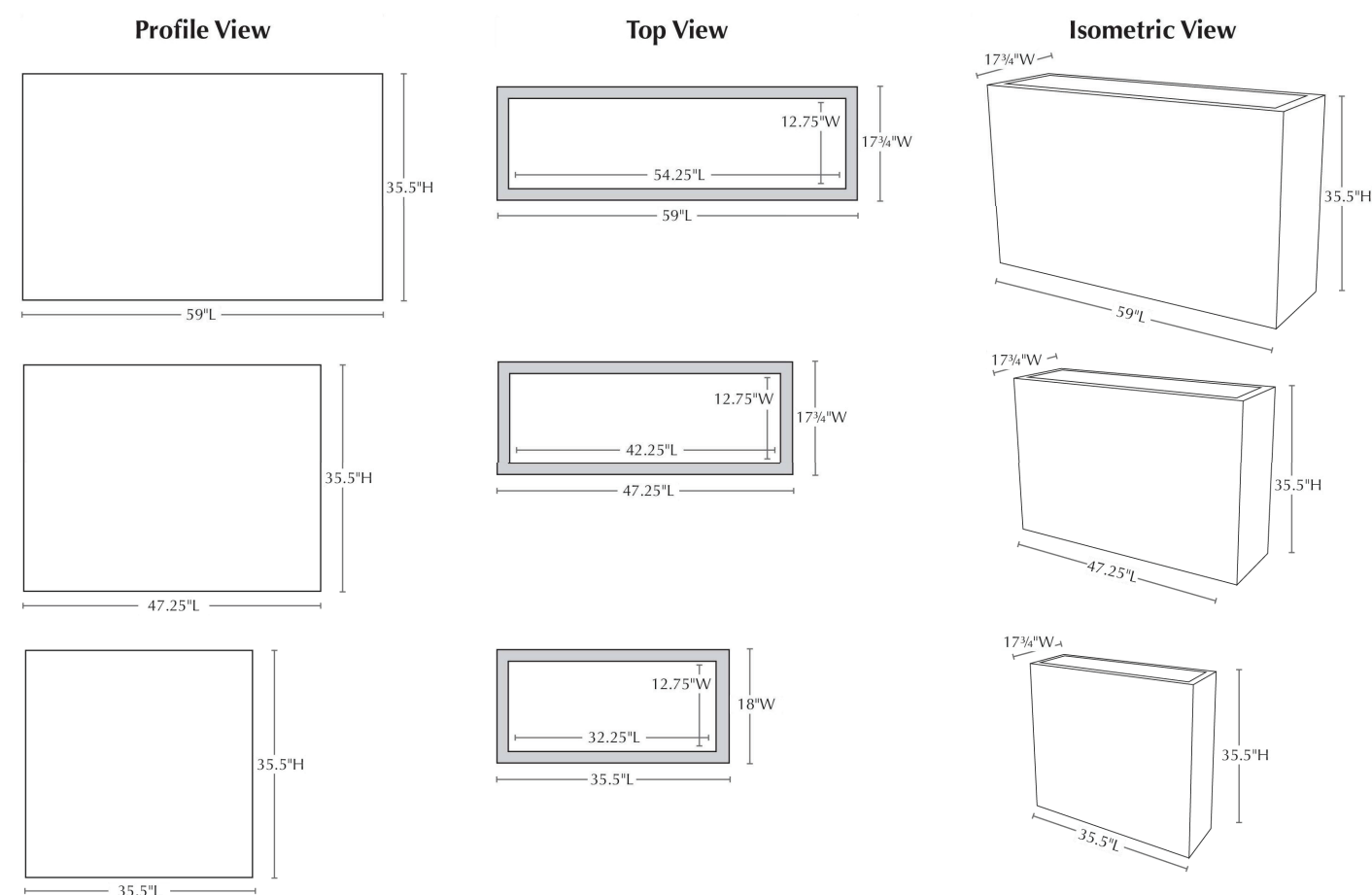
**Denotes non-stock color. Available by special order.*



Campania International, Inc. | 2452 Quakertown Road, Suite 100, Pennsburg, PA 18073 USA | 215-541-4330
projects@campaniainternational.com | www.campaniainternational.com

rev 8/10/2020

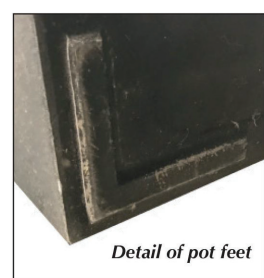
Sandal Planter Lite Collection
18"W x 36"H



Materials: unsaturated polyester resin, sand, stone powder, talc powder, and fiberglass

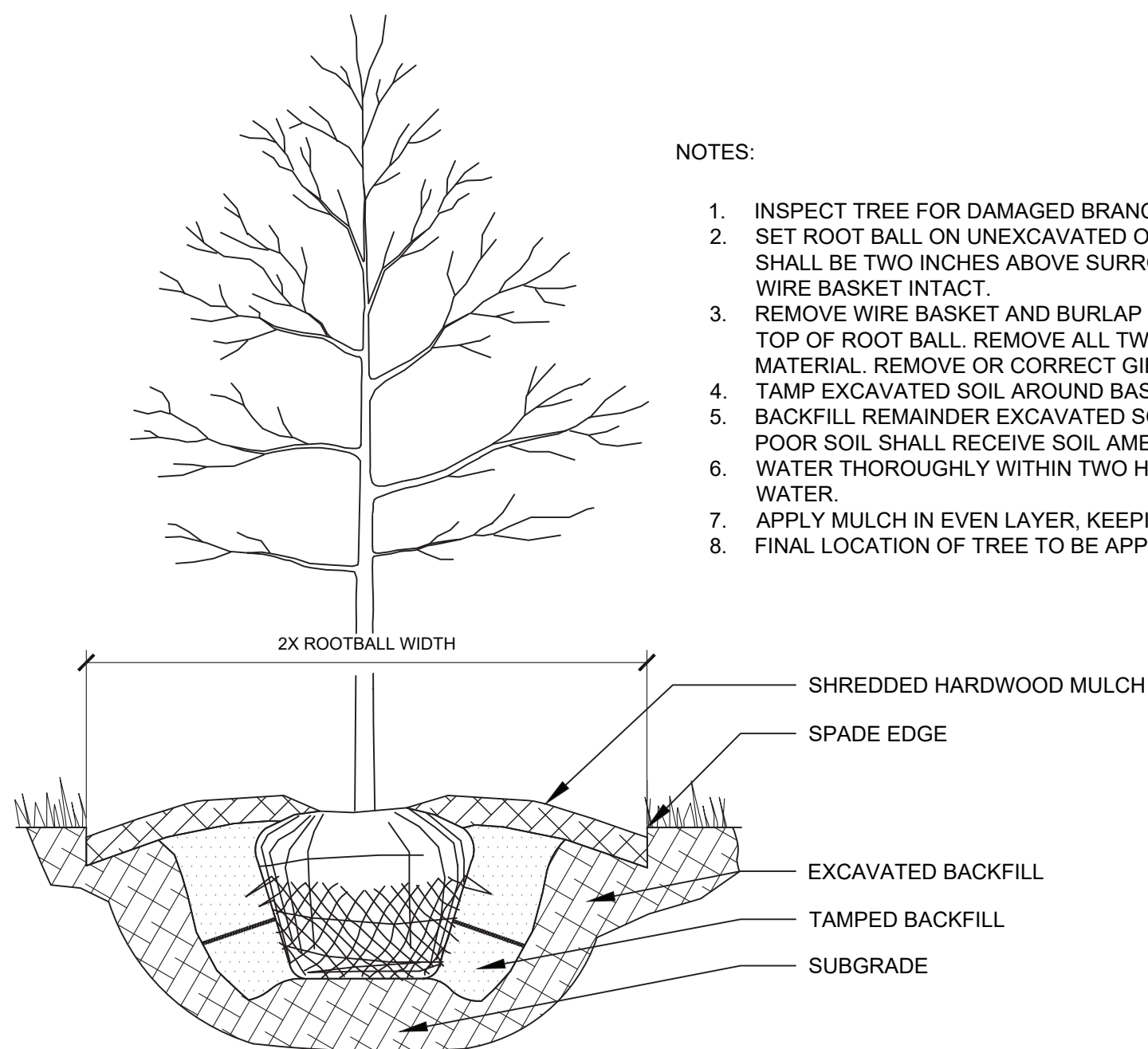
Care & Maintenance/Outdoor Planting Instructions: Our fiberglass planters are equipped with pre-installed drainage holes and raised feet to allow for drainage. The drain holes must be kept clear to maintain the longevity of your planter, especially in climates that undergo freeze/thaw cycles in the winter. We recommend: Covering the drain holes with a mesh screen or equivalent to keep debris from clogging the openings; Filling the bottom of the planter with non-porous drainage material; Filling the remainder of the planter with a well-draining soil mix that will not retain water; and lastly, covering the soil with decorative mulch or pine bark to the top rim of the planter to discourage water from pooling on the surface. For indoor use, Campania offers a saucer system for the Farnley and Sandia planter series and plugs are available upon request.

Cleaning Instructions: Campania Lite® planters can be cleaned with either water or Windex® with Ammonia-D. Spray down the surface of the planter where it is dirty and use a lint-free cloth or sponge to wipe the surface. Note that it may take several cycles of wiping and drying before the planter is completely clean. This is normal and to be expected with the texture in the fiberglass. Do not pressure wash, use alcohol based cleaners, apply corrosive cleaners or clean with anything abrasive.



Warranty: Campania International, Inc. provides a limited 3 year warranty for material and manufacturing defects only assuming proper product care and maintenance as described in Campania's product specifications. Please refer to Campania's care instructions for proper care and maintenance. In addition to the failure to properly care for and maintain the product, this limited warranty does not apply to any defects which occur in the color or surface of the product which are the result of natural weathering, exposure to the elements or improper winterization. Campania International, Inc. will not be held liable for any incidental or consequential damages, including but not limited to damage to any plants which may have been planted in the product.

Campania International, Inc. | 2452 Quakertown Road, Suite 100, Pennsburg, PA 18073 USA | 215-541-4330
projects@campaniainternational.com | www.campaniainternational.com

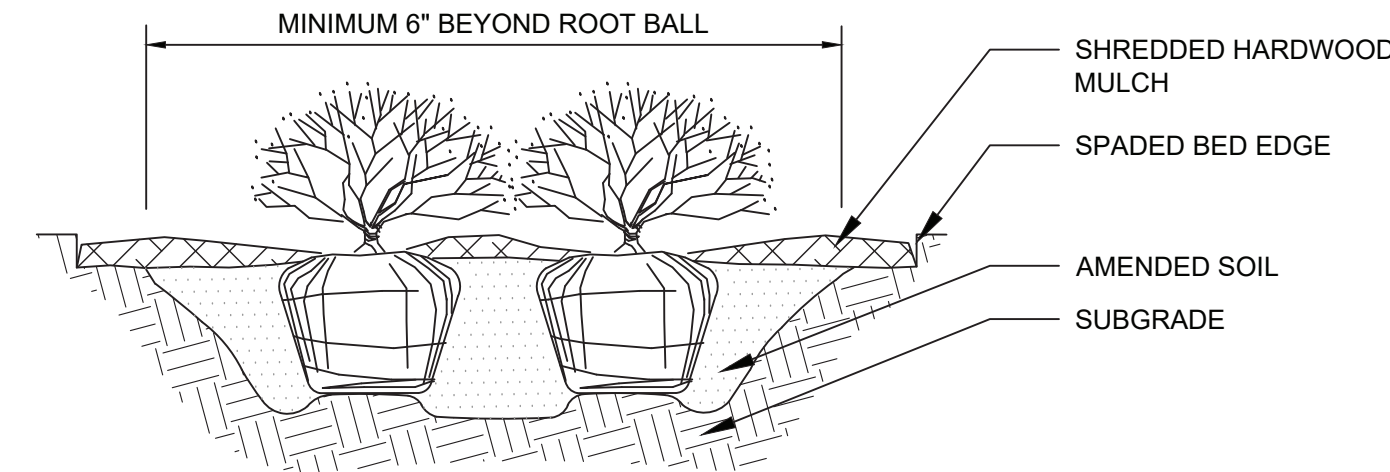


NOTES:

1. INSPECT TREE FOR DAMAGED BRANCHES, APPLY CORRECTIVE PRUNING.
2. SET ROOT BALL ON UNEXCAVATED OR TAMPED SOIL. TOP OF ROOTBALL SHALL BE TWO INCHES ABOVE SURROUNDING GRADE WITH BURLAP AND WIRE BASKET INTACT.
3. REMOVE WIRE BASKET AND BURLAP DOWN FOUR TO SIX INCHES BELOW TOP OF ROOT BALL. REMOVE ALL TWINE AND (IF USED), SYNTHETIC MATERIAL. REMOVE OR CORRECT GIRDLING ROOTS.
4. TAMP BACKFILLED SOIL AROUND BASE OF ROOTBALL.
5. EXCAVATED REMAINDER EXCAVATED SOIL TAMPED LIGHTLY. HIGH CLAY OR POOR SOIL SHALL RECEIVE SOIL AMENDMENT PER LANDSCAPE NOTES.
6. WATER THOROUGHLY WITHIN TWO HOURS USING 10 TO 15 GALLONS OF WATER.
7. APPLY MULCH IN EVEN LAYER, KEEPING AWAY FROM ROOT FLARE.
8. FINAL LOCATION OF TREE TO BE APPROVED BY OWNER.

1 TREE PLANTING

NTS



NOTES:

1. APPLY CORRECTIVE PRUNING.
2. SET ROOT BALL OR CONTAINER ON UNEXCAVATED OR TAMPED SOIL. TOP OF ROOTBALL (CONTAINER) SHALL BE ONE INCH ABOVE SURROUNDING GRADE. FOR LARGER SHRUBS WITHIN PLANTING BED DIG 12" DEEPER AT ONLY FOR THOSE SHRUBS.
3. REMOVE BURLAP FROM TOP HALF THE LENGTH OF ROOTBALL. TWINE AND (IF USED) SYNTHETIC MATERIAL SHALL BE REMOVED FROM PLANTING BED. FOR CONTAINER GROWN SHRUBS, REMOVE CONTAINER AND LOOSEN ROOTS PRIOR TO INSTALLATION.
4. REMOVE OR CORRECT GIRDLING ROOTS.
5. PLUMB AND BACKFILL WITH AMENDED SOIL PER LANDSCAPE NOTES. WATER THOROUGHLY WITHIN TWO HOURS.
6. APPLY MULCH IN EVEN LAYER, KEEPING AWAY FROM ROOT FLARE. MULCH LIMITS FOR SHRUBS EXTEND TO ALL LIMITS OF PLANTING BED. SEE PLANS FOR BED LAYOUTS.

2 SHRUB PLANTING

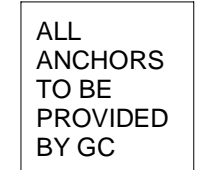
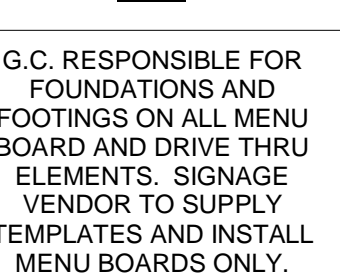
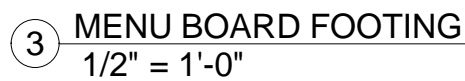
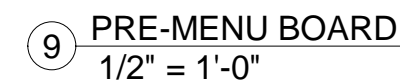
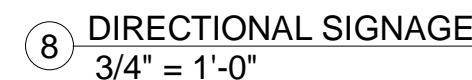
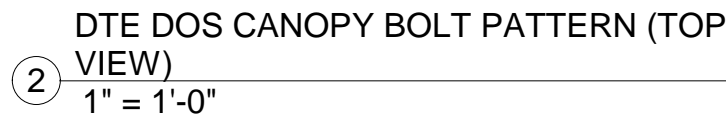
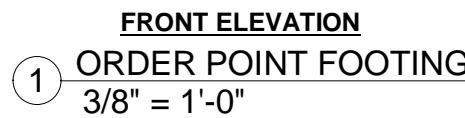
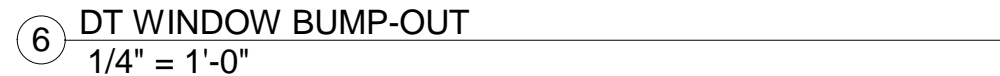
NTS

STARBUCKS MCCORDSVILLE 6078 W. BROADWAY MCCORDSVILLE, IN 46055	LANDSCAPE NOTES & DETAILS	 MIDLAND ATLANTIC PROPERTIES		Kimley»Horn KIMLEY-HORN & ASSOCIATES, INC. 600 EAST 16TH STREET, SUITE 300, INDIANAPOLIS, IN 46240 WWW.KIMLEY-HORN.COM	SCALE:	AS NOTED	DESIGNED BY: BLK DRAWN BY: EAS CHECKED BY: NJB	TAC COMMENTS	06/03/25	EAS
					SHEET NUMBER	L1.1		ORIGINAL ISSUE: 05/01/2025	RHA PROJECT NO. 170088019	

PLANTER BOX

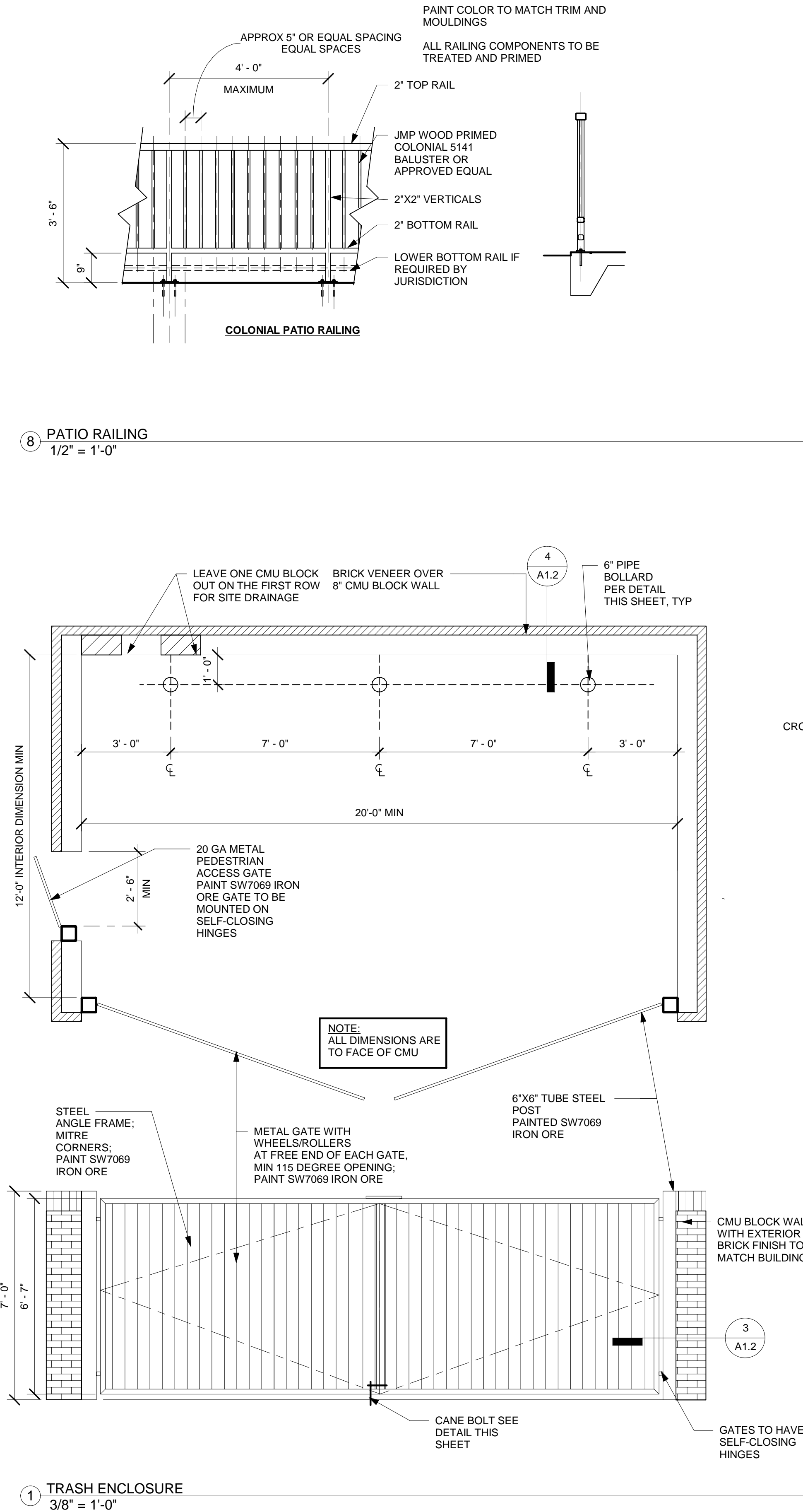
2 SHRUB PLANTING

NTS



A1.1

5/21/2025 3:50:59 PM C:\Users\missy\OneDrive - MSpire Design\MSpire Design\Projects\Midland Atlantic\24-0013 SBUX Shell McCordsville INDrawings\McCordsville SBUX Shell.rvt



THIS DOCUMENT IS RELEASED FOR THE PURPOSE OF REVIEW UNDER THE AUTHORITY OF MSPIRE DESIGN, LLC. IT IS NOT TO BE USED FOR CONSTRUCTION, BIDDING OR PERMIT PURPOSES.

5-21-25

Thomas A Pirtle III
AIA NCARB

Architect
1308 Meadowview Drive
Kennedale Texas 76060

CONTRACTOR SHALL VERIFY ALL CONDITIONS AND DIMENSIONS AT THE JOB SITE AND NOTIFY THE ARCHITECT OF ANY DIMENSIONAL ERRORS, OMISSIONS OR DISCREPANCIES BEFORE BEGINNING OR FABRICATING ANY WORK. DO NOT SCALE DRAWINGS.

MIDLAND ATLANTIC PROPERTIES, INC
3801 EAST 82ND STREET SUITE B
INDIANAPOLIS, IN 46240
317.597.1714 (o)

REVISION SCHEDULE

REV	DATE	BY	DESCRIPTIONS

PROJECT NAME:
STARBUCKS SHELL BUILDING

PROJECT ADDRESS:
**WEST BROADWAY
MCCORDSVILLE, IN**

PROJECT #:
24-0013

ORIGINAL ISSUE
DATE: 5-21-25
PRODUCTION
DESIGNER: MH
CHECKED BY: TP

SHEET TITLE:

SITE DETAILS

SCALE:
As indicated

SHEET NUMBER:

A1.2