

Drawing name: K:\IND_LEV\170125006_patch_nwc-600w500n_mccordsville_in\2 Design\CADD\plan sheets\C0.0-TITLE SHEET.dwg C0.0 May 02, 2025 3:23pm by: neil.kippenbrock
This document, together with the concepts and designs presented herein, as an instrument of service, is intended only for the specific purpose and client for which it was prepared. Reuse of and improper reliance on this document without written authorization and adaptation by Kimley-Horn and Associates, Inc. shall be without liability to Kimley-Horn and Associates, Inc.

FINAL ENGINEERING PLANS

GATEWAY AT MCCORDSVILLE

MASS GRADING & PUBLIC INFRASTRUCTURE

NWC OF N 600 W & W 500 N

MCCORDSVILLE, IN 46055

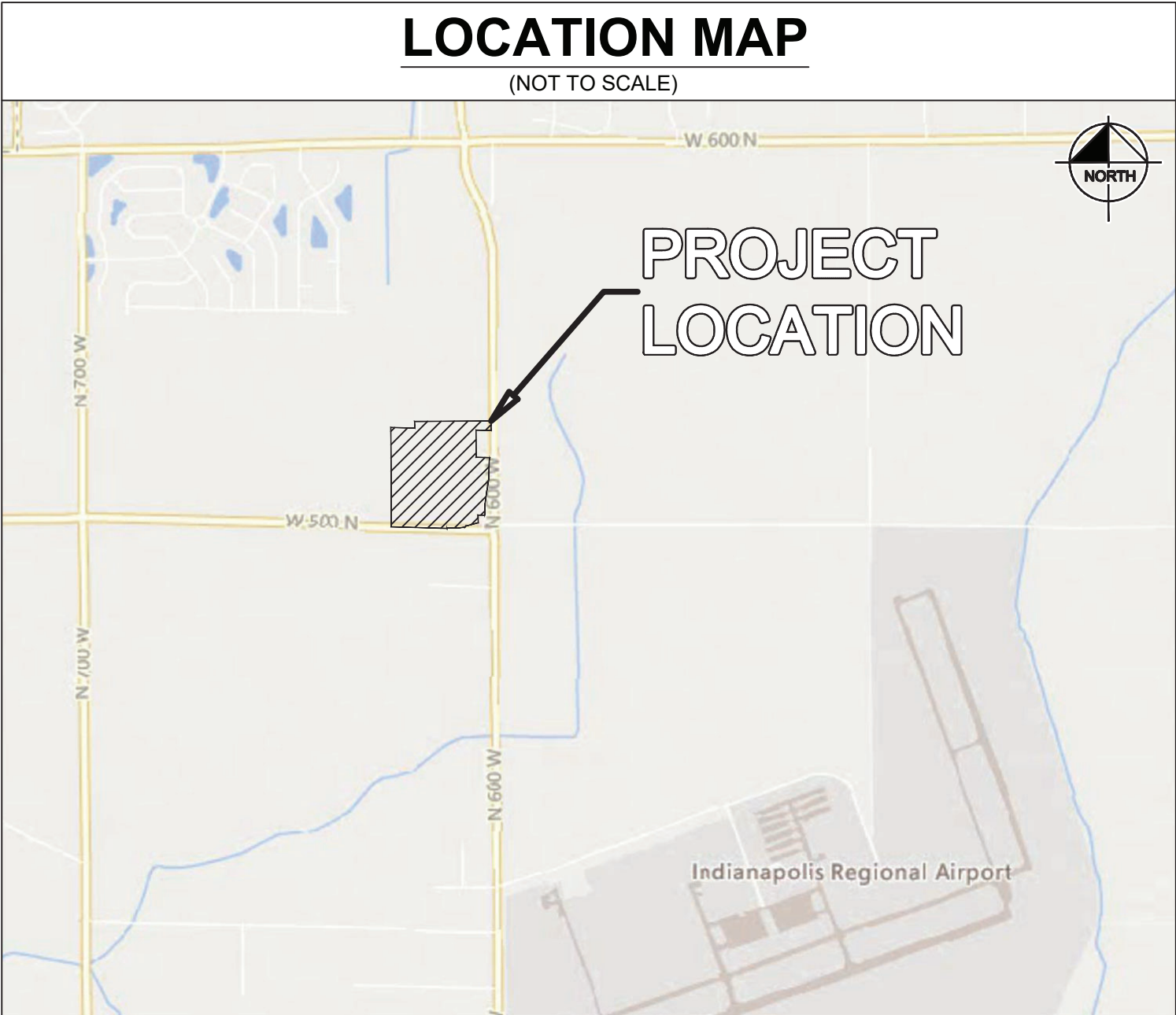
Indiana Utilities Protection Service



UTILITY AND GOVERNING AGENCY CONTACTS				
SERVICE / JURISDICTION	COMPANY / DEPT.	ADDRESS	PHONE NUMBER	CONTACT
SANITARY SEWER	AQUA INDIANA	5750 CASTLE CREEK PKWY N. DR., SUITE 314, INDIANAPOLIS, IN 46250	(317) 577-1390	JIM SHIELDS, P.E.
STORM SEWER	MCCORDSVILLE PUBLIC WORKS	6280 W. 800 N., MCCORDSVILLE, IN 46055	(317) 335-3493	RON CRIDER
WATER	CITIZENS ENERGY GROUP	2150 DR MARTIN LUTHER KING JR ST., INDIANAPOLIS, IN 46202	(317) 927-4351	BRAD HOSTETLER
NATURAL GAS	CENTERPOINT ENERGY	16222 ALLISONVILLE RD., NOBLESVILLE, IN 46060	(317) 260-5477	JAY BOSER
ELECTRICITY	NINE STAR CONNECT	2243 EAST MAIN ST., GREENFIELD, IN 46140	(317) 326-3131	
TELEPHONE / COMMUNICATIONS	NINE STAR CONNECT	2243 EAST MAIN ST., GREENFIELD, IN 46140	(317) 323-2081	JASON WARRICK
STREETS	MCCORDSVILLE PUBLIC WORKS	6280 W. 800 N., MCCORDSVILLE, IN 46055	(317) 335-3493	RON CRIDER
PLANNING AND ZONING	MCCORDSVILLE PLANNING AND BUILDING DEPARTMENT	6280 W. 800 N., MCCORDSVILLE, IN 46055	(317) 355-3604	RYAN CRUM
TOWN ENGINEER	MCCORDSVILLE ENGINEERING DEPARTMENT	6280 W. 800 N., MCCORDSVILLE, IN 46055	(317) 335-3604	MARK WITSMAN

PROJECT TEAM				
ROLE	COMPANY	ADDRESS	PHONE NUMBER	CONTACT
DEVELOPER/OWNER	PATCH DEVELOPMENT	6950 E. 96TH ST., SUITE 200, FISHERS, IN, 46038	(317) 412-4298	ANDREW GREENWOOD
CIVIL ENGINEER	KIMLEY-HORN & ASSOCIATES, INC.	250 E. 96TH ST., SUITE 580, INDIANAPOLIS, IN 46240	(317) 218-9560	NEIL KIPPENBROCK, PE
LAND SURVEYOR	SCHNEIDER GEOMATICS	8901 OTIS AVE., SUITE 100, INDIANAPOLIS, IN 46216	(317) 826-7388	MARK S. HENNESSEY, PS

LEGAL DESCRIPTION
REFER TO C1.1—GENERAL NOTES



HANCOCK COUNTY

CONSTRUCTION OF INFRASTRUCTURE AND MASS GRADING OF A FUTURE MIXED-USE DEVELOPMENT FOR PATCH DEVELOPMENT ON ± 38.88 AC. PROJECT IS IN SECTION 1 OF T16N, R5E IN THE TOWN OF MCCORDSVILLE, HANCOCK COUNTY, INDIANA

Sheet List Table	
Sheet Number	Sheet Title
C0.0	TITLE SHEET
C1.0	GENERAL SPECIFICATIONS
C1.1	GENERAL NOTES
V1.0	ALTA SURVEY
V1.1	ALTA SURVEY
V1.2	ALTA SURVEY
V1.3	ALTA SURVEY
V1.4	ALTA SURVEY
V1.5	ALTA SURVEY
V1.6	TOPOGRAPHIC SURVEY
V1.7	TOPOGRAPHIC SURVEY
C2.0	OVERALL EXISTING CONDITIONS AND DEMO PLAN
C3.0	OVERALL SITE PLAN
C3.1	OVERALL SITE AERIAL PLAN
C4.0	OVERALL EROSION CONTROL PLAN PHASE 0
C4.1	OVERALL EROSION CONTROL PLAN PHASE 1
C4.3	EROSION CONTROL DETAILS
C4.4	SWPPP
C5.0	OVERALL GRADING AND DRAINAGE PLAN PHASE 1
C5.1	GRADING AND DRAINAGE PLAN PHASE 1
C5.2	GRADING AND DRAINAGE PLAN PHASE 1
C5.3	GRADING AND DRAINAGE PLAN PHASE 1
C5.4	GRADING AND DRAINAGE PLAN PHASE 1
C5.5	OVERALL GRADING AND DRAINAGE PLAN PHASE 2
C6.0	OVERALL SEWER PLAN
C6.1	SANITARY SEWER PLAN & PROFILE
C6.2	SANITARY SEWER PLAN & PROFILE
C6.3	SANITARY SEWER PLAN & PROFILE
C6.4	OVERALL WATER PLAN
C6.5	WATER PLAN AND PROFILE
C6.6	WATER PLAN AND PROFILE
C6.7	WATER PLAN AND PROFILE
C6.8	WATER PLAN AND PROFILE
C6.9	STORM PROFILES
C6.10	STORM PROFILES
C6.11	STORM PROFILES
C6.12	STRUCTURE DATA TABLE
C7.0	CONSTRUCTION DETAILS
C7.1	CONSTRUCTION DETAILS
C7.2	CONSTRUCTION DETAILS
C7.3	CONSTRUCTION DETAILS
C7.4	CONSTRUCTION DETAILS
R1.0	TYPICAL SECTIONS
R2.0	ALIGNMENT DATA
R3.0	ROADWAY PLAN AND PROFILE
R3.1	ROADWAY PLAN AND PROFILE
R3.2	ROADWAY PLAN AND PROFILE
R3.3	ROADWAY PLAN AND PROFILE
R3.4	ROADWAY PLAN AND PROFILE
R4.0	MAINTENANCE OF TRAFFIC PLAN
R5.0	SIGNING AND MARKING PLAN

National Flood Hazard Layer FIRMette



ISSUED FOR PERMIT

NO.

DATE

BY

AS NOTED

DESIGNED BY: DJZ

DRAWN BY: DJZ

CHECKED BY: NPK

Kimley»Horn

©2025 KIMLEY-HORN AND ASSOCIATES, INC.
500 EAST 96TH STREET, SUITE 300,
INDIANAPOLIS, IN 46240
WWW.KIMLEY-HORN.COM

NEIL KIPPENBROCK

REGISTERED PROFESSIONAL ENGINEER

NOT APPROVED FOR CONSTRUCTION

Neil Kippenbrock

PATCH

DEVELOPMENT

GATEWAY AT MCCORDSVILLE

MASS GRADING & PUBLIC

INFRASTRUCTURE

NWC OF N 600 W & W 500 N,
MCCORDSVILLE, IN 46055

ORIGINAL ISSUE:

05/02/2025

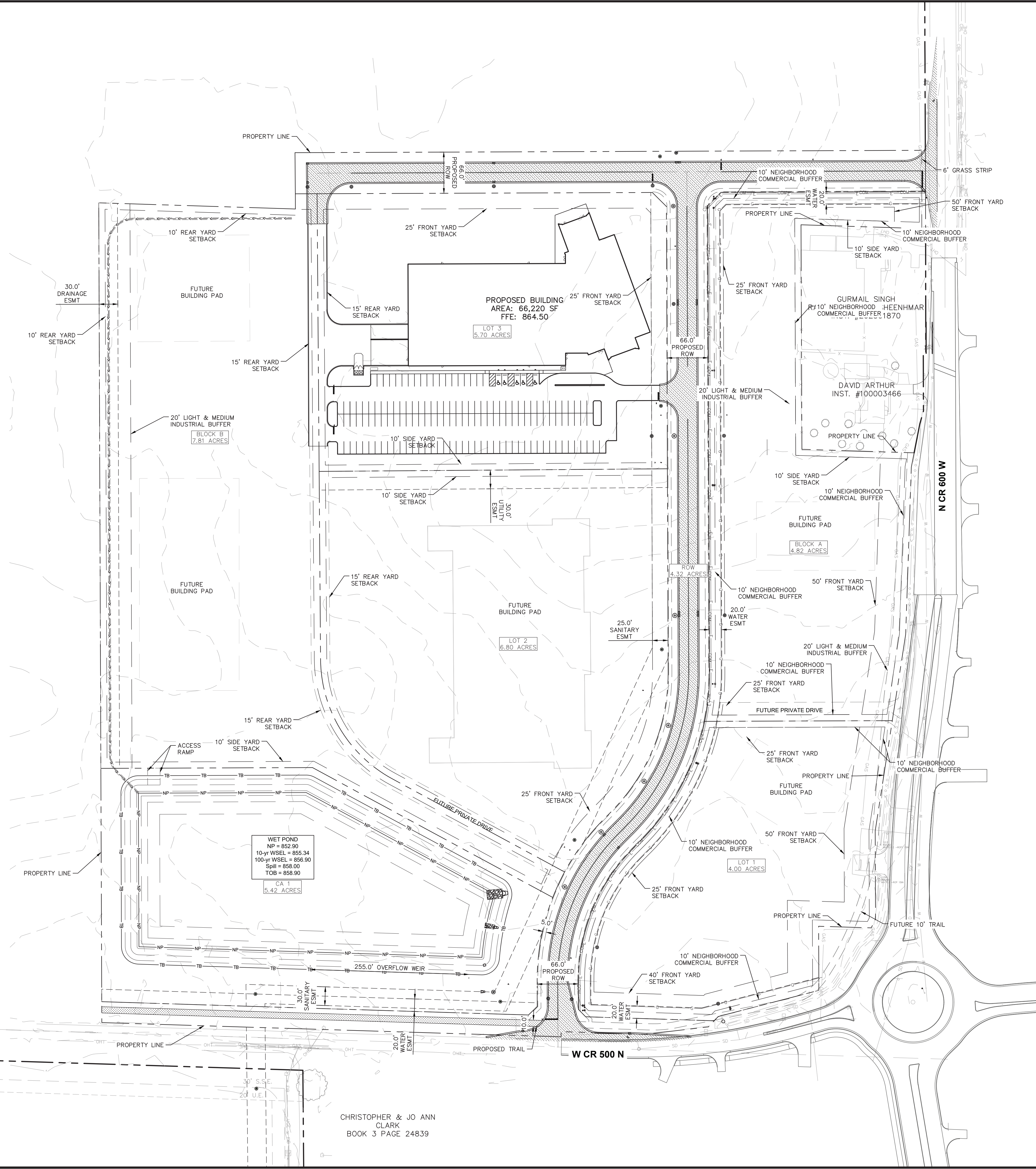
KHA PROJECT NO.

170125008

SHEET NUMBER

C0.0

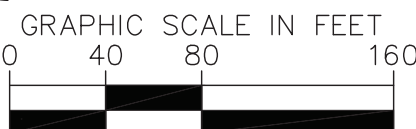
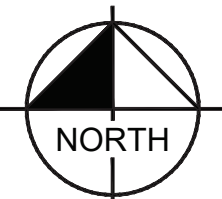
Drawing name: K:\IND\DEV\170125008_patch_nwc-600w500n_mccordsville_in\2 Design\CADD\plan sheets\C3.0-OVERALL SITE PLAN.dwg CS:0 May 02, 2025 3:26pm by: nellkippenberg
This document, together with the concepts and designs presented herein, is intended only for the specific purpose and client for which it was prepared. Reuse of and improper reliance on this document without written authorization and adaptation by Kimley-Horn and Associates, Inc. shall be without liability to Kimley-Horn and Associates, Inc.



CHRISTOPHER & JO ANN
CLARK
BOOK 3 PAGE 24839

Indiana Utilities Protection Service

Call 811
before you dig



PAVING LEGEND

	RIGHT OF WAY PAVEMENT SEE CONSTRUCTION DETAILS FOR PAVEMENT SECTION
	CONCRETE SIDEWALK SEE CONSTRUCTION DETAILS FOR PAVEMENT SECTION
	ASPHALT TRAIL SEE CONSTRUCTION DETAILS FOR PAVEMENT SECTION

SITE SUMMARY

SITE ZONING	=	PUD
SITE ACREAGE	=	38.88 AC.±

BENCHMARKS

SITE BENCHMARKS:
(LOCATIONS SHOWN ON SURVEY)

CP 100 — CAPPED REBAR
N: 1678484.595
E: 255521.232
ELEVATION=861.621

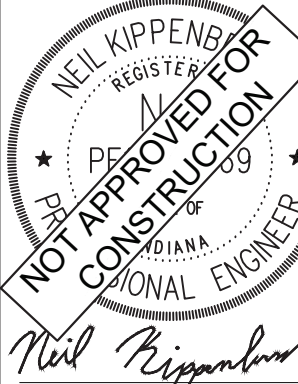
CP 105 — CAPPED REBAR
N: 1679739.088
E: 258192.207
ELEVATION=862.312

EXISTING LEGEND

ISSUED FOR PERMIT

Kimley»Horn
©2025 KIMLEY-HORN AND ASSOCIATES, INC.
500 EAST 96TH STREET, SUITE 300,
INDIANAPOLIS, IN 46240
WWW.KIMLEY-HORN.COM

SCALE: AS NOTED
DESIGNED BY: DJZ
DRAWN BY: DJZ
CHECKED BY: NPK



PATCH
DEVELOPMENT

OVERALL SITE PLAN

GATEWAY AT MCCORDSVILLE
MASS GRADING & PUBLIC
INFRASTRUCTURE
NWC OF N 600 W & W 500 N,
MCCORDSVILLE, IN 46055

ORIGINAL ISSUE:
05/02/2025
KHA PROJECT NO.
170125008
SHEET NUMBER

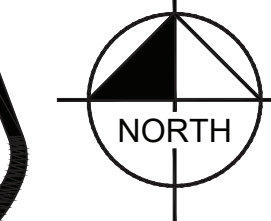
GENERAL PLAN NOTES

REFER TO GENERAL NOTES SHEET FOR MORE INFORMATION INCLUDING THE FOLLOWING: (EXISTING LEGEND, BENCHMARK INFORMATION, AND SPECIFIC GENERAL PLAN NOTES.)

C3.0



Call 811
before you dig






GRAPHIC SCALE IN FEET

0 40 80 160

A horizontal scale bar with alternating black and white segments. The segments are labeled 0, 40, 80, and 160, representing distances in feet. The bar is divided into four equal segments, each representing 40 feet.

PAVING LEGEND

	RIGHT OF WAY PAVEMENT SEE CONSTRUCTION DETAILS FOR PAVEMENT SECTION
	CONCRETE SIDEWALK SEE CONSTRUCTION DETAILS FOR PAVEMENT SECTION
	ASPHALT TRAIL SEE CONSTRUCTION DETAILS FOR PAVEMENT SECTION

SITE SUMMARY

SITE ZONING	=	PUD	
SITE ACREAGE	=	38.88	AC.

BENCHMARKS

SITE BENCHMARKS:
(LOCATIONS SHOWN ON SURVEY)

CP 100 - CAPPED REBAR
N: 1678484.595
E: 255521.232
ELEVATION=861.621

CP 105 - CAPPED REBAR
N: 1679739.088
E: 258192.207
ELEVATION=862.312

EXISTING LEGEND

	BOLLARD		MISC LID		YARD LIGHT
	CONTROL BENCHMARK		MONITOR WHEEL		SANITARY CLEANOUT
	ROW MONUMENT		GAS MARKER		SANITARY MANHOLE
	FLAG POLE		GAS METER		VENT PIPE
	MAIL BOX		GAS VALVE		STORM CURB INLET
	UTILITY POLE		AC UNIT		STORM INLET
	POST		AREA LIGHT		STORM ROOF DRAIN
	SOIL BORING		ELECTRICAL BOX		STORM DRAIN MANHOLE
	HANDICAP SYMBOL		ELECTRICAL HAND HOLE		STORM YARD DRAIN
	SIGN		ELECTRICAL METER		FIRE DEPT CONNECTION
	CABLE MANHOLE		ELECTRICAL MANHOLE		FIRE HYDRANT
	CABLE PEDESTAL		ELECTRICAL MARKER		IRRIGATION VALVE
	TELEPHONE PEDESTAL		ELECTRICAL TRANSFORMER		POST INDICATOR VALVE
	TELEPHONE HAND HOLE		GUY POLE/WIRE		WELL
	TELEPHONE MARKER		POWER POLE		WATER METER
	TELEPHONE MANHOLE		TRAFFIC SIGNAL POLE		WATER VALVE
	FIBER OPTIC MARKER		TRAFFIC MANHOLE		TREE / STUMP
	SWALE		TOE OF SLOPE		SLOPE
	FENCE LINE		UNDERGROUND FIBER OPTIC		OVERHEAD ELECTRICAL
	SANITARY SEWER		UNDERGROUND GAS		UNDERGROUND TELEPHONE
	STORM DRAIN				
	WATER LINE				
	TREE LINE				

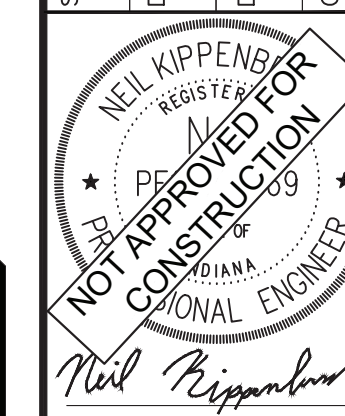
GENERAL PLAN NOTES

REFER TO GENERAL NOTES SHEET FOR MORE INFORMATION INCLUDING THE FOLLOWING: (EXISTING LEGEND, BENCHMARK INFORMATION, AND SPECIFIC GENERAL PLAN NOTES.)

ISSUED FOR PERMIT

Kimley»Horn
2025 KIMLEY-HORN AND ASSOCIATES, INC.
1500 EAST 96TH STREET, SUITE 300,
INDIANAPOLIS, IN 46240
PHONE: 317-218-9560
WWW.KIMLEY-HORN.COM

SCALE:	AS NOTED
DESIGNED BY:	DJZ
DRAWN BY:	DJZ
CHECKED BY:	NPK



PATCH
DEVELOPMENT

OVERALL SITE
AERIAL PLAN

GATEWAY AT MCCORDSVILLE
MASS GRADING & PUBLIC
INFRASTRUCTURE

ORIGINAL ISSUE:	05/02/2025
KHA PROJECT NO.	170125008

SHEET NUMBER

C3.1

M

CHECKED BY: NPK

✓

DEVELOPMENT

GATEWAY AT MCCORDSVILLE
MASS GRADING & PUBLIC
INFRASTRUCTURE

ORIGINAL ISSUE:	05/02/2025
KHA PROJECT NO.	170125008

SHEET NUMBER

C3.1

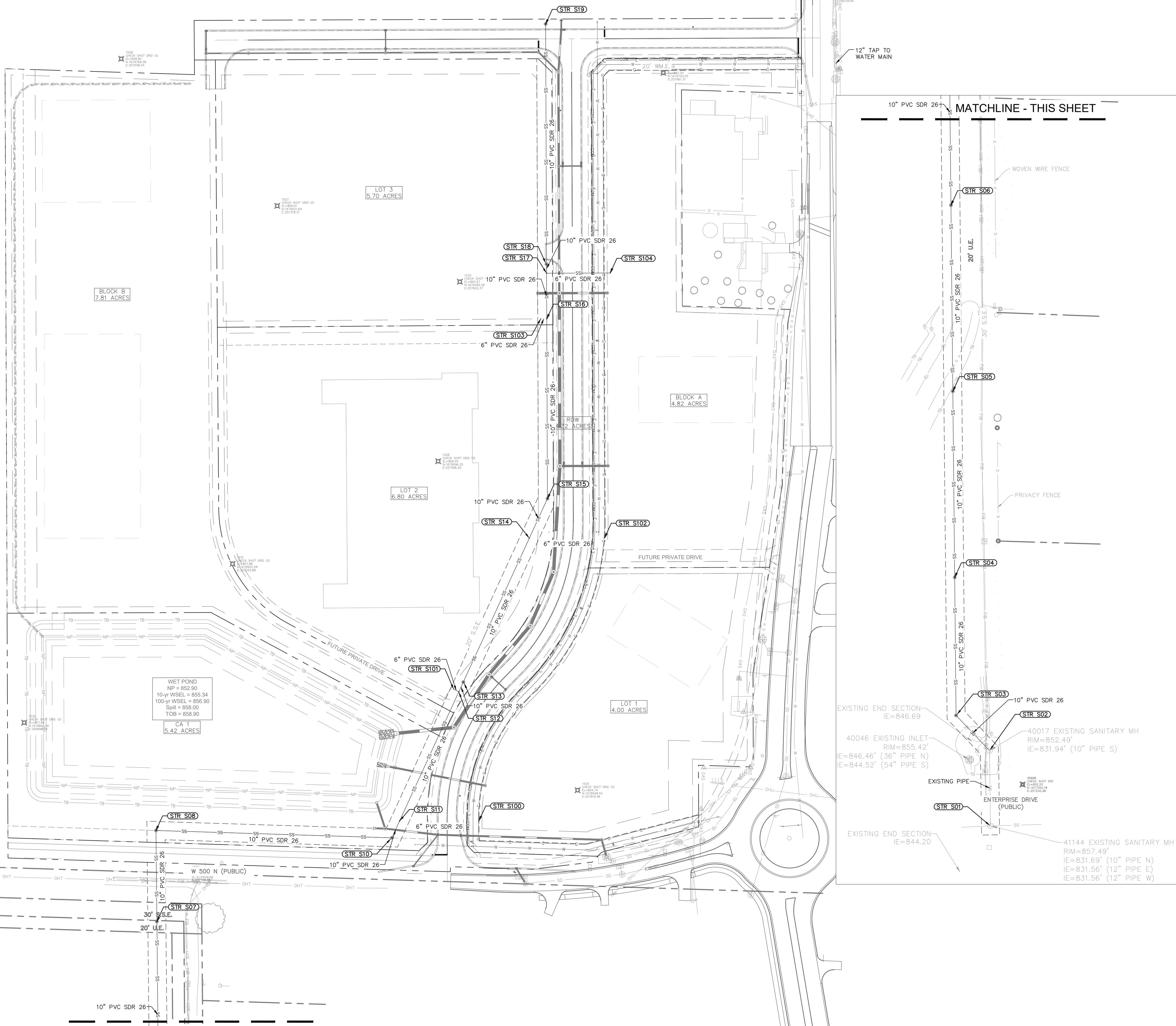


	FINISHED GRADE SPOT ELEVATION
	TOP OF CURB / BOTTOM OF CURB SPOT ELEVATION
	FLOW LINE SPOT ELEVATION
	MATCH EXISTING SPOT ELEVATION
	FINISHED FLOOR SPOT ELEVATION
	FINISHED GRADE NEAR BUILDING SPOT ELEVATION
	TOP OF WALL SPOT ELEVATION
	BOTTOM OF WALL SPOT ELEVATION
	RIM ELEVATION
	STRUCTURE ID & RIM ELEVATION
	STRUCTURE ID & INVERT ELEVATION
	PROPOSED CONTOUR
	PROPOSED RIDGE
	SLOPE AND FLOW DIRECTION
	100-YEAR OVERLAND OVERFLOW ROUTE
	DETENTION BASIN 100-YEAR EMERGENCY
	PROPOSED SWALE
	PROPOSED STORM SEWER
	PROPOSED STORM STRUCTURES
	PROPOSED SANITARY MANHOLE
	PROPOSED STORM/SANITARY CLEANOUT
	PROPOSED WATER STRUCTURES
	PROPOSED LIGHT POLES
	PROPOSED TRANSFORMER PAD

1. CONTRACTOR TO VERIFY ALL EXISTING TOPOGRAPHY AND STRUCTURES ON THE SITE AND IMMEDIATELY NOTIFY THE ENGINEER OF ANY DISCREPANCIES PRIOR TO STARTING WORK.
2. ALL PAVEMENT SLOPE GRADE ELEVATIONS AND RIM ELEVATIONS WITHIN OR ALONG CURB AND GUTTER REFER TO EDGE OF PAVEMENT ELEVATIONS UNLESS OTHERWISE NOTED.
3. ALL ELEVATIONS SHOWN DEPICT FINISHED GRADE OR EDGE OF PAVEMENT UNLESS OTHERWISE NOTED. GENERAL CONTRACTOR TO COORDINATE WITH EXCAVATION, LANDSCAPE AND PAVING SUBCONTRACTORS REGARDING TOPSOIL THICKNESS FOR LANDSCAPE AREAS AND PAVEMENT SECTION THICKNESS FOR PAVED AREAS TO PROPERLY INSURE ADEQUATE CUT TO ESTABLISH SUBGRADE ELEVATIONS.
4. NO EARTHEN SLOPE SHALL BE GREATER THAN 3:1, UNLESS OTHERWISE NOTED.
5. MAXIMUM SLOPE IN ACCESSIBLE PARKING SPACES AND LOADING ZONES SHALL NOT EXCEED 2.0% IN ALL DIRECTIONS.
6. MAXIMUM RUNNING SLOPE SHALL NOT EXCEED 5% AND CROSS SLOPE SHALL NOT EXCEED 2% ON ALL SIDEWALKS AND ACCESSIBLE ROUTES UNLESS OTHERWISE NOTED.
7. WHEN NATURAL FLOW OF DRAINAGE IS AWAY FROM CURB, CONTRACTOR TO INSTALL REVERSE GUTTER PITCH.
8. MATCH EXISTING ELEVATIONS AT THE PROPERTY LIMITS.
9. ALL STOOPS OR PEDESTRIAN EGRESS POINTS FROM THE BUILDING(S) SHALL BE NO GREATER THAN 2% FOR THE FIRST 5'.


CP 105 - CAPPED REBAR
N: 1679739.088
E: 258192.207
ELEVATION=862.312

Drawing name: K:\IND_LDEV\170125008_patch_nwc-600w650p-mccordsville_in\2 Design\CADD\plan sheets\06 C-OVERALL SEWER PLAN.dwg C6.0 May 02, 2025 3:26pm by: neil.kippeng
This document, together with the concepts and designs presented herein, is an instrument of service. It is intended only for the specific purpose and client for which it was prepared. Reuse of and improper reliance on this document without written authorization and adaptation by Kimley-Horn and Associates, Inc. shall be without liability to Kimley-Horn and Associates, Inc.












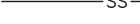
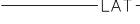








Indiana Utilities Protection Service

Call 811
before you dig

 NORTH

GRAPHIC SCALE IN FEET
0 40' 80' 160'

UTILITY LEGEND	
	PROPOSED UNDERGROUND ELECTRIC LINE
	PROPOSED GAS LINE (BY GAS COMPANY)
	PROPOSED PHONE LINE
	PROPOSED ROOF DRAIN LINE
	PROPOSED UNDERDRAIN
	PROPOSED SWALE
	PROPOSED STORM SEWER LINE
	STRUCTURE ID
	PROPOSED STORM STRUCTURES
	PROPOSED SANITARY SEWER LINE
	PROPOSED SANITARY LATERAL LINE
	PROPOSED SANITARY MANHOLE
	PROPOSED STORM/SANITARY CLEANOUT
	PROPOSED WATER LINE
	PROPOSED FIRE PROTECTION LINE
	PROPOSED WATER VALVE BOX, PIV, METER, FIRE HYDRANT, FIRE DEPT CONN. & VAULT
	PROPOSED WATER BENDS & TEE
	PROPOSED LIGHT POLE
	PROPOSED TRANSFORMER PAD (BY OTHERS)

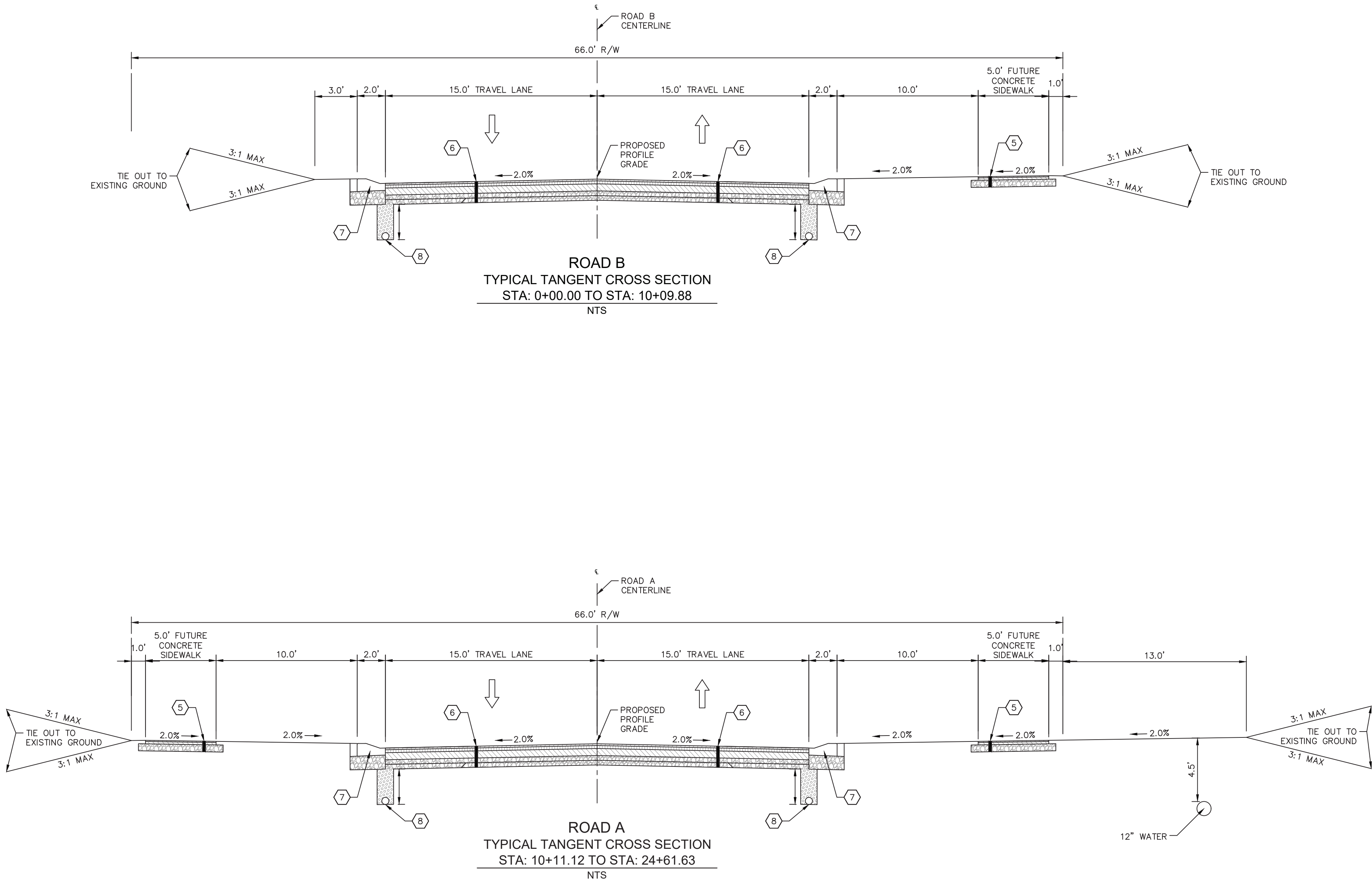
EXISTING LEGEND	
	BOLLARD
	CONTROL BENCHMARK
	FLAG POLE
	MAIL BOX
	UTILITY POLE
	POST
	SOIL BORING
	HANDICAP SYMBOL
	SIGN
	CABLE MANHOLE
	CABLE PEDESTAL
	TELEPHONE PEDESTAL
	TELEPHONE HAND HOLE
	TELEPHONE MARKER
	TELEPHONE MANHOLE
	FIBER OPTIC MARKER
	SWALE
	FENCE LINE
	TOP OF BANK
	SANITARY SEWER
	STORM DRAIN
	WATER LINE
	TREE LINE
	MISC LID
	MONITOR WELL
	GAS MARKER
	GAS METER
	GAS VALVE
	AC UNIT
	AREA LIGHT
	ELECTRICAL BOX
	ELECTRICAL HAND HOLE
	ELECTRICAL METER
	ELECTRICAL MANHOLE
	ELECTRICAL MARKER
	ELECTRICAL TRANSFORMER
	GUY POLE/WIRE
	POWER POLE
	TRAFFIC SIGNAL POLE
	TRAFFIC MANHOLE
	TOE OF SLOPE
	TOP OF BANK
	UNDERGROUND FIBER OPTIC
	OVERHEAD ELECTRICAL
	UNDERGROUND GAS
	UNDERGROUND TELEPHONE
	YARD LIGHT
	SANITARY CLEANOUT
	SANITARY MANHOLE
	VENT PIPE
	STORM CURB INLET
	STORM INLET
	STORM ROOF DRAIN
	STORM DRAIN MANHOLE
	STORM YARD DRAIN
	FIRE DEPT CONNECTION
	FIRE HYDRANT
	IRRIGATION VALVE
	POST INDICATOR VALVE
	WELL
	WATER METER
	WATER VALVE
	TREE / STUMP

GENERAL PLAN NOTES

REFER TO GENERAL NOTES SHEET FOR MORE INFORMATION INCLUDING THE FOLLOWING: (EXISTING LEGEND, BENCHMARK INFORMATION, AND SPECIFIC GENERAL PLAN NOTES.)

ISSUED FOR PERMIT		
SCALE:	AS NOTED	NO.
	DESIGNED BY: DJZ	DATE
	DRAWN BY: DJZ	REVISIONS
	CHECKED BY: NPK	BY
 ©2025 KIMLEY-HORN AND ASSOCIATES, INC. 500 EAST 96TH STREET, SUITE 300, INDIANAPOLIS, IN 46240 WWW.KIMLEY-HORN.COM		
 NEIL KIPPENG REGISTERED PROFESSIONAL ENGINEER NOTED FOR CONSTRUCTION		
		
OVERALL SEWER PLAN		
GATEWAY AT MCCORDSVILLE MASS GRADING & PUBLIC INFRASTRUCTURE NWC OF N 600 W & W 500 N, MCCORDSVILLE, IN 46055		
ORIGINAL ISSUE: 05/02/2025 KHA PROJECT NO. 170125008 SHEET NUMBER C6.0		

Drawing name: K:\IND_LDEV\170125008_patch_nwc-600w6500r_mccordsville_R1.0-TYPICAL-SECTIONS.dwg May 02, 2025 3:31pm by: nell.kippengrass
This document, together with the concepts and designs presented herein, as an instrument of service, is intended only for the specific purpose and client for which it was prepared. Reuse of and improper reliance on this document without written authorization and adaptation by Kimley-Horn and Associates, Inc. shall be without liability to Kimley-Horn and Associates, Inc.



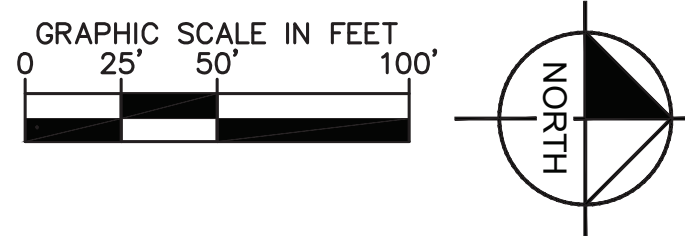
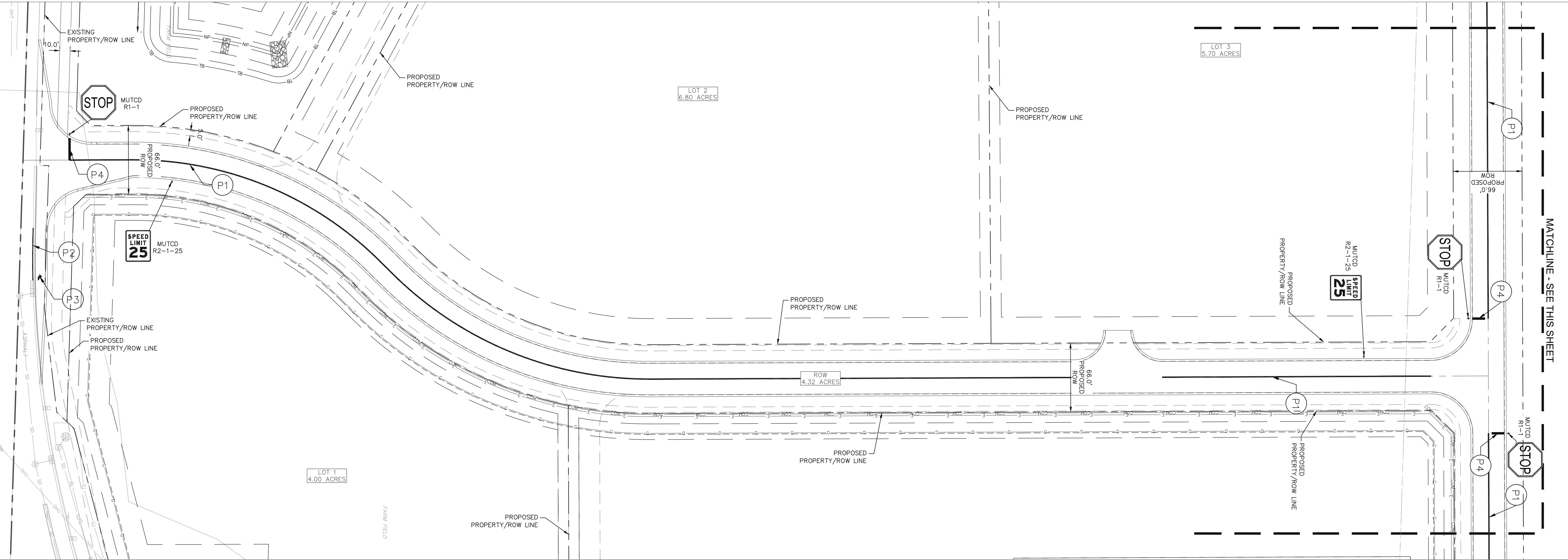
LEGEND

- 1 MILLING, ASPHALT, 1.5 IN. THEN
165 LBS/SYS, QC/QA-HMA, SURFACE, 9.5 mm
- 2 MILLING, ASPHALT, 1.5 IN. THEN
VARIABLE DEPTH (165 TO 350 LBS/SYS), QC/QA-HMA, SURFACE, 9.5 mm
- 3 165 LBS/SYS, QC/QA-HMA, SURFACE, 9.5 mm ON
275 LBS/SYS, QC/QA-HMA, INTERMEDIATE, 19.0 mm ON
440 LBS/SYS, QC/QA-HMA, BASE, 25.0 mm ON
660 LBS/SYS, QC/QA-HMA, BASE, 25.0 mm ON
4 IN. COMPACTED AGGREGATE BASE, NO. 53 ON
4 IN. COMPACTED AGGREGATE, NO. 2 STONE ON
SUBGRADE TREATMENT TYPE 1B (CHEMICALLY MODIFIED WITH 4.5%
HIGH CALCIUM HYDRATED LIME OR CEMENT)
- 4 COMPACTED AGGREGATE, NO. 53
- 5 3 IN. HMA SURFACE, TYPE B
6 IN. DENSE GRADED AGGREGATE (#53) ON
COMPACTED SUBGRADE
- 6 165 LBS/SYS, QC/QA-HMA, SURFACE, 9.5 mm ON
275 LBS/SYS, QC/QA-HMA, INTERMEDIATE, 19.0 mm ON
660 LBS/SYS, QC/QA-HMA, BASE, 25.0 mm ON
4 IN. COMPACTED AGGREGATE BASE, NO. 53 ON
4 IN. COMPACTED AGGREGATE, NO. 2 STONE ON
SUBGRADE TREATMENT TYPE 1B (CHEMICALLY MODIFIED WITH 4.5%
HIGH CALCIUM HYDRATED LIME OR CEMENT)
- 7 ROLL CURB AND GUTTER
(SEE TOWN OF MCCORDSVILLE TOWN STANDARDS, SHEET 3)
- 8 6" UNDERDRAIN
(SEE TOWN OF MCCORDSVILLE TOWN STANDARDS, SHEET 3)

NOTE:

FOR THE DEPTH ("H") OF THE UNDERDRAIN AGGREGATE, SEE UNDERDRAIN
TABLE ON SHEET R8.2

GATEWAY AT MCCORDSVILLE MASS GRADING & PUBLIC INFRASTRUCTURE NWC OF N 600 W & W 500 N, MCCORDSVILLE, IN 46055	ORIGINAL ISSUE: 05/02/2025		SHEET NUMBER		R1.0
	KHA PROJECT NO. 170125008				
TYPICAL SECTIONS	PATCH DEVELOPMENT				 ©2025 KIMLEY-HORN AND ASSOCIATES, INC. 500 EAST 96TH STREET, SUITE 300, INDIANAPOLIS, IN 46240 WWW.KIMLEY-HORN.COM
	AS NOTED		ISSUED FOR PERMIT		
	DESIGNED BY: DJZ				
DRAWN BY: DJZ					
CHECKED BY: NPK					
		No.		DATE	
		REVISIONS		BY	



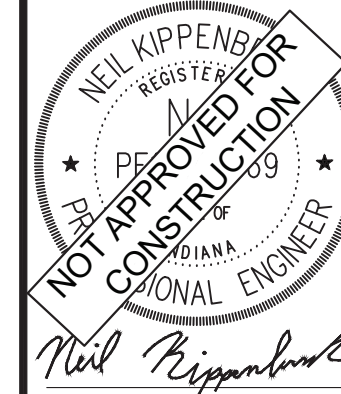
Call 811
before you dig

P1	LINE, THERMOPLASTIC, SOLID, DOUBLE YELLOW, 4 INCH
P2	LINE, THERMOPLASTIC, SOLID, WHITE, 4 INCH
P3	PAVEMENT MESSAGE MARKING, THERMOPLASTIC, WHITE, DIRECTION ARROW
P4	TRANSVERSE MARKING, THERMOPLASTIC, STOP BAR, WHITE, 24 INCH

1. ALL SIGNING AND PAVEMENT MARKING SHALL BE IN ACCORDANCE WITH THE MANUAL ON UNIFORM TRAFFIC CONTROL DEVICES (MUTCD) AND THE INDIANA DEPARTMENT OF TRANSPORTATION (INDOT) STANDARDS.
2. SIGNS: SIGNS SHALL BE CONSTRUCTED OF 0.080-INCH THICK FLAT ALUMINUM PANELS WITH REFLECTORIZED LEGEND ON THE FACE. LEGEND SHALL BE IN ACCORDANCE WITH THE MUTCD.
3. POSTS: SIGN POSTS SHALL BE 53 OR 60 GALVANIZED STEEL PIPE IN ACCORDANCE WITH ASTM A 53 OR ASTM F 1083, USE STANDARD WEIGHT, SCHEDULE 40 PIPE PER THE INDOT STANDARDS.
4. SIGNS AND POSTS SHALL BE INSTALLED IN ACCORDANCE WITH INDOT STANDARDS.
5. PAVEMENT MARKINGS: ALL PAVEMENT MARKINGS IN THE ROADWAY LIMITS, SUCH AS STOP LINES, CENTERLINES, CROSSWALKS, AND DIRECTIONAL ARROWS, SHALL BE REFLECTORIZED THERMOPLASTIC HOT ROLLED INTO PAVEMENT PER INDOT STANDARDS.
6. COLOR, WIDTH, STYLE, AND SIZE OF ALL MARKINGS SHALL BE IN ACCORDANCE WITH THE MUTCD AND MUNICIPAL CODE.
7. THERMOPLASTIC MARKINGS SHALL BE INSTALLED WHEN THE PAVEMENT TEMPERATURE IS 55 DEGREES FAHRENHEIT AND RISING. PAINT MARKINGS SHALL BE INSTALLED WHEN THE AIR TEMPERATURE IS 50 DEGREES FAHRENHEIT AND RISING.

ORIGINAL ISSUE: 05/02/2025
KHA PROJECT NO. 170125008
SHEET NUMBER R5.0

SIGNING AND MARKING PLAN



SCALE:	AS NOTED
DESIGNED BY:	DJZ
DRAWN BY:	DJZ
CHECKED BY:	NPK

Kimley»Horn
2025 KIMLEY-HORN AND ASSOCIATES, INC.,
5500 EAST 96TH STREET, SUITE 300,
INDIANAPOLIS, IN 46240
PHONE: 317-218-9560
WWW.KIMLEY-HORN.COM

ISSUED FOR PERMIT

REVISIONS

	C
--	---

WWW.KIMBLET-HORN.COM

CHECKED BY: NPK

★

SIGNING AND MARKING PLAN

GATEWAY AT MCCORDSVILLE
MASS GRADING & PUBLIC
INFRASTRUCTURE

NWC OF N 600 W & W 500 N,
MCCORDSVILLE, IN 46055

ORIGINAL ISSUE: 05/02/2025
KHA PROJECT NO. 170125008
SHEET NUMBER R5.0