



RANGE PROPOSAL

ACTION TARGET PROPOSAL

McCordsville PD, IN - Range Fit Out

Quotation Number: 146837

Prepared by: Wyatt Davis



3411 Mountain Vista Pkwy, Provo Ut 84606
ActionTarget.com | 888.377.8033

PRICING TABLE: 6 lane option

COMPLETE SHOOTING RANGE EQUIPMENT PACKAGE	Price
---	-------

25 Yard Tactical Indoor Range - 21' wide

\$499,995.00

Tactical Overhead Ceiling Baffles – U.S. Patent #5822936

- Tactical layout
- 3/8" AR500 steel for rifle use
- Standard Acoustic Tile Fascia
- Includes overhead structure to hang baffles from existing overhead beams
- No field welding required.

Rubber Berm Trap – U.S. Patent 6378870

- Rifle rated not including 50 BMG
- Class A Flame Lock fire retardant
- Structural Rubber Berm Trap design
- 10 ga. Steel deck
- Trap back plate will be 3/8" AR500
- Proprietary fin design to reduce trap maintenance

Combat Wall Baffles - 75' of walls in front of bullet trap 12' going into Rubber Berm Trap

- 75' of walls in front of bullet trap 12' going into Rubber Berm Trap
- Allows for safe 180 degree training on range walls
- 3/8" AR500 w/ 2" acoustical rubber tile fascia for rifle use

2" Thick PEPP Acoustical Treatment

- Covers 12' of both side walls to behind firing line 8' high
- Cover entire range back wall 8' high
- Fire treated 2x4 furring,
- Class A fire rated,

Ballistic Rolling Door

- Ballistic rolling door to cover existing sidewall double doors

Standard Range Lighting

- Performed by other contractor
- Bullet resistant down range lighting, standard drop in ready area lighting

Drop Ceiling

- Performed by other contractor
- Standard acoustical drop ceiling from radial diffusers to ballistic flat safety ceiling

Action Target Factory Installation

- Does not include prevailing wages
- Assumes Forklift/scissor lift access.

Full Training of Range Staff

Ground Freight

Tax Exempt

Exclusions: permits, bonds, ventilation, testing/commissioning of range ventilation

<input type="checkbox"/> Option: Lighting (deduct from listed total) <ul style="list-style-type: none">Change down range LED lighting to non-bullet resistant	-\$30,000.00
Trusted Partner 3-Year Warranty <ul style="list-style-type: none">Comprehensive Trusted Partner Warranty covers both parts and labor due to manufacturing or product defects.	\$0.00

Total **\$499,995.00**

TERMS & CONDITIONS

Action Target Inc. may be referred to as "Action Target" or "ATI" throughout this proposal.

PROPOSAL DATE	8/08/2024
PROPOSAL VALIDITY	30 days from 8/08/2024
PAYMENT TERMS	<div><div>1.</div><div>25% Down, 25% Drawings, 40% Pre Shipment, 10% After install</div></div> <div><div>2.</div><div>ATI reserves the right to adjust installation costs based upon the actual site conditions encountered.</div></div> <div><div>3.</div><div>Unless explicitly itemized, price does not include bonds, fees, assessments, licenses, permits, mandatory wage requirements, other regulatory costs that may be applicable to the job site, or anything else not expressly identified in this proposal.</div></div> <div><div>4.</div><div>Price applies to range equipment and systems only. It does not include site preparation, construction, trusses/baffle supports, electrical, conduit, or any other work not directly contained in ATI's scope of work.</div></div>
Steel Pricing Terms	<div>The Parties acknowledge that the Total Contract Price includes an estimated costs for steel to be utilized in the ATI equipment being provided as part of this Agreement. If the actual price for steel at the time ATI orders the steel for this project is less than the amounts estimated in the current Total Contract Price, ATI agrees to adjust the Total Contract Price accordingly and credit Customer the difference. ATI will utilize the "Notice to Proceed" as the time frame to asses the cost of steel for the project, including Industry Indexes and then current quotes from ATI's steel suppliers.</div>
SHIPPING TERMS	<div><div>1.</div><div>FOB destination: prepaid.</div></div> <div><div>2.</div><div>Shipping costs are estimates and subject to change; actual shipping costs will be subject to availability and rates at time of purchase.</div></div>
DELIVERY & INSTALLATION TERMS	<div><div>1.</div><div>Manufacturing shall take no fewer than 18 weeks. weeks.</div></div> <div><div>2.</div><div>Full Action Target Installationestimated 21 Installation days.working days.</div></div> <div><div>3.</div><div>Installation cost is based upon having forklift and scissor lift access. If forklift and scissor lift access is not available, the installation cost will increase.</div></div>

**CUSTOMER
RESPONSIBILITIES**

1. Buyer to verify the ceiling structure within the range is capable of containing any errant type secondary bullet impacts.
 2. All conduit, A.C. wiring, A.C. electrical connections, lighting, and any duct work is specifically excluded from this proposal and scope of work. If conflict with HVAC, plumbing or electrical equipment occurs, it will be the owner's / contractor's responsibility to resolve issues in a timely manner. Any delays from these may require a change order for additional install time.
 3. Engineered stamped drawings for all hanging points, seismic engineering/components and/or ATI provided equipment.
 4. Permits, licenses, special insurance requirements, bonds (when applicable), regulatory costs, or any other special fees unknown at this time.
 5. Concrete work including slabs, footings, and walls, floor trenching and wall notching (if applicable).
 6. Structural work of any kind, including structural supports, canopies, etc.
 7. Engineering of ceiling or roof structures, trusses, beams cross-members, columns or pillars to accommodate baffle, trap, target systems, lighting and HVAC equipment weight loads. Weights and load points will be provided in ATI drawings for utilization by the general contractor, engineer or architect.
 8. Drop ceiling behind the safety ceiling at the firing line or other light fixtures in this area.
 9. Temporary lighting and power (including 3 phase, if necessary).
 10. Supplying of electrical services, electrical outlets, conduit(s), junction boxes, disconnects, stub-outs and lighting of any kind.
 11. 120-volt power to the control panel, control conduits, and dedicated analog phone line to DDC panel, labor to assist ATI's control technician with pulling in all necessary low voltage cable (all control conduits are required to have pull strings installed prior to arrival of ATI's start-up technician), labor and hardware to install DDC control panels in the building and on the roof, dedicated 120-volt circuit to the control pipe and wire for the evaporative cooler section fill and drain valves.
 12. Range lighting controls and wiring. (unless specifically called out in quote)
 13. Cutting, coring, sealing and/or patching of any wall surfaces, roof surfaces, and or concrete (if applicable).
 14. Additional fees related to "customization" of product or work otherwise identified as "custom".
 15. Any other work, materials or equipment that is not expressly included in the ATI Work.
 16. Disposal of construction waste.
 17. Wash area and restroom facilities.
-

**ACTION TARGET
RESPONSIBILITIES**

1. Consultation and recommendation of optimal range design.
2. Design of ranges for complete ballistic containment.
3. Procurement, engineering, cutting and painting of ballistic steel plate.
4. Manufacture of targets and control systems.
5. Provision of sound attenuation material as called out on ATI drawings.
6. Design, engineering, and supply of HVAC systems provided by ATI. (if applicable to this project)

**CONFIDENTIALITY
COPYRIGHT &
REPRODUCTION**

This proposal is submitted by Action Target Inc. Any and all information, drawings, specifications and other design documents contained herein is the property of Action Target Inc. and shall not for any reason, whether tangible or intangible, be disclosed, duplicated, or used, in whole or in part, for any reason other than to evaluate this quote.

**TERMS &
CONDITIONS
CLAUSE**

This is a summary of standard Action Target Inc. Terms and Conditions. Action Target Inc. reserves the right to change, modify or add to these Terms and Conditions in the final customer contract.

TRUSTED PARTNER WARRANTY™

3-YEAR COMPREHENSIVE COVERAGE

Action Target's 3-year Trusted Partner Warranty is peace of mind for gun ranges. It is uninterrupted training for those that serve. It is a resounding pledge from Action Target to its customer's success as the Trusted Partner at Every Level™.

Our Promise

The comprehensive Trusted Partner Warranty covers both parts and labor due to manufacturing or product defects.



LEARN MORE

ActionTarget.com/TrustedPartnerWarranty

CORE PRODUCTS COVERED

- Genesis™ Target Retriever
- Pilot™ Target Retriever
- SmartRange Axis™ Range control
- DRM Pro™
- Shooting Stalls
- Rubber Berm Trap
- Line of Fire™
- Vortex™ Steel Trap
- Baffles and Deflectors
- Turning targets
- Auto Targets™
- MATCH™
- TAC House™



Customer Support

24/7 Support | Remote Access | Inventory | Nation-Wide Reps | 3-Year Warranty

Action Target is always on call to help with warranty issues. Many items are remotely accessible, allowing us to quickly trouble shoot. We also maintain inventory to minimize service time.



CEILING BAFFLES

COVERAGE YOU CAN COUNT ON

Using a patented design, Action Target's ceiling baffles provide ballistic protection for ceiling structures, lights, electrical, and ventilation systems while keeping shooters and range employees safe.

Customizable

Action Target's ceiling baffles are compatible with various fascia options, range sizes, and ballistic ratings.

Modular Design

Ceiling baffles are designed to make installation possible in small spaces and facilitate the replacement of individual parts.

Ballistic Steel Baffles

Steel baffles prevent bullets from escaping the range. ATI Class 1 (handgun) and ATI Class 2 (rifle) options are available.

Sound-Reducing Fascia

A variety of available baffle fascia options improve comfort for range users and customize the look of a shooting range.

Air Gap

A steel furring within the baffle creates an air gap for bullets to splatter.

Wood Panel

A layer of wood over the baffle contains bullet splatter, keeping shooters and range staff safe.

Outdoor Applications

Ceiling baffles may be installed in outdoor settings with an overhead structure.

Configurations

Ceiling baffles are installed to provide complete overhead ballistic coverage in either fixed firing line or tactical ranges, allowing shooters to move up and down the range safely. Structural stamps are available upon request.



LEARN MORE

ActionTarget.com/Ceiling-Baffles

FEATURES

- Engineered Deflection Angles
- Modular
- Prevents Splatter
- AR500 Steel
- Customizable
- Acoustic Fascia
- Protects Ceiling-Mounted Equipment
- No Field Welding Required



WALL BAFFLES

KEEP ERRANT ROUNDS SAFELY CONTAINED

A critical safety priority for any indoor range is making sure bullets cannot escape outside the range. Wall baffles provide an extra level of protection to wall structures and ensure that all rounds are contained within the range.

Safe

Wall baffles provide ballistic protection for wall structures and can contain thousands of rifle and handgun bullets, preventing errant rounds from escaping the shooting range.

Customizable

Action Target's wall baffles are compatible with various fascia options, range sizes, and ballistic ratings.

Modular Design

Individual baffles may be replaced as necessary, which keeps maintenance costs low.

Fascia

Wall baffle fascia helps contain splatter and provides sound abatement for the range.

Wood Panel

A layer of wood over the baffle contains bullet splatter, keeping shooters and range staff safe.

Air Gap

A wood or steel furring within the baffle provides space for bullets to splatter.

Ballistic Steel Baffles

Steel baffles prevent bullets from escaping the range and protect structural walls from projectiles fired at oblique angles. ATI Class 1 (handgun) and ATI Class 2 (rifle) options are available.

Wall Deflectors

Wall deflectors are installed in front of the bullet trap and over wall seams to keep rounds within the range. Deflectors are comprised of two components that are precisely engineered to direct rounds downrange. Deflectors are also designed with replaceable wear plates.



LEARN MORE

ActionTarget.com/Wall-Baffle

FEATURES

- Prevents Splatter
- Available in Standard and Acoustic Finish
- Customizable
- Modular
- 180° Training



RUBBER BERM TRAP™

NOT ALL RUBBER BERM TRAPS ARE BUILT ALIKE

Action Target's Rubber Berm Trap has numerous attributes that set it apart from the competition. For example, the trap is engineered with a uniquely designed galvanized steel frame that holds rubber in place to safely capture rounds. The rubber can also be treated with a flame-resistant formula to provide maximum fire protection.

Rubber Granules

Action Target's styrene-butadiene rubber granules are available in a variety of sizes and grade options to fit the needs of any range.

Fire Treatment

Action Target provides optional Flame Lock™ flame-resistant treatment. This gives rubber granules an ASTM-E84 and ASTM-E108-11 Class A rating, which is the industry's best fire rating.

Self-Supporting Frame

The Rubber Berm Trap is the safest rubber trap available. The self-supporting berm frame is designed to IBC standards.

Patented Fin Design

The Rubber Berm Trap's patented fin design keeps the rubber at a depth that is safe for shooters and reduces trap maintenance.

Sidewall Protection

Customers may opt for AR steel sidewalls to prevent bullets from damaging the range walls.

Integrated Baffles

Optional overhead baffles are available for additional protection of the building structure. Baffles can also be positioned as a hopper feeder for granule distribution.



LEARN MORE

ActionTarget.com/RBT

FEATURES

- Internal Frame Design
- Industry's Best Fire Rating
- Patented Fin Design
- Clean and Quiet
- Harvested Rubber Granules
- Optional .50 BMG Rating



PEPP

PEPP PANELS FOR SOUND ABATEMENT

PEPP is a cleanable acoustic panel that can be attached directly to range wall and ceiling surfaces for attractive and effective sound control.

Durable

PEPP can be used both indoor and outdoor. It is moisture-, impact-, bacteria-, and fungi-resistant. It is also resilient to oil, chemicals, flames, and sagging.

High Performance

PEPP is Class A fire-rated per ASTM E84 and also has high STRC and NRC ratings. NRC of 2" PEPP with the 1" cotton backing is .90. PEPP also has a SRT of 13.

Configuration

Can be installed on both range wall and ceiling surfaces.

Wipe-able

The non-fibrous and non-abrasive lightweight surface does not contain fiberglass and is easily cleanable.

Strong

This sound-silencing material is resilient and flexible. PEPP is durable, tackable, and is made of a strong rigid material that can capture rounds without ricochet or splatter.

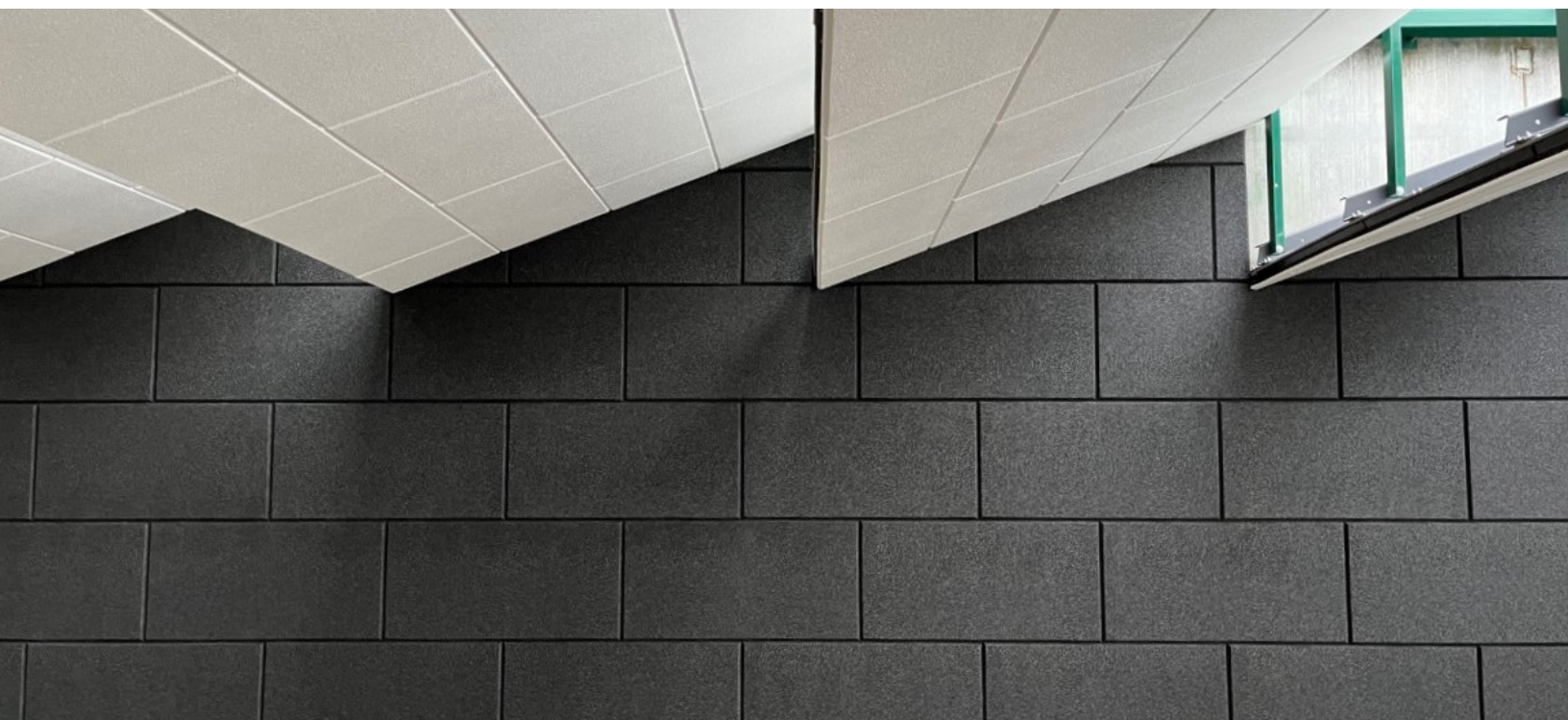


LEARN MORE

ActionTarget.com/Sound-Abatement

FEATURES

- Available in Both Charcoal and White Finish
- Both 1" and 2" Thickness
- Both Straight Edge and Beveled Edge Finishes
- High STRC and NRC Sound Rating
- Non-Fibrous, Resistant Material
- Class A Fire Rated
- Lightweight and Easy-to-Clean
- Outdoor and Indoor Usage



RANGE SERVICES

TURNKEY CONVENIENCE, COMPLIANCE, AND SAFETY

Managing a range requires a lot of effort and attention to detail. Action Target eliminates much of that effort with our turnkey range solutions. From scheduled maintenance and cleanings to managing metals recycling and compliance documentation, Action Target's services streamline your operations.

Recycling & Disposal Programs

Metals Recycling | Waste Disposal

Action Target offers a full solution for metals recycling and waste disposal. Within 72 hours Action Target picks up shipment, replacing collection containers. Receive a 10% bonus on Action Target equipment and services.

Rubber Berm Trap Cleaning

Transparent pricing | Proprietary Process | Convenience

Action Target uses a simple, transparent all-inclusive pricing structure to give you the best return on your metals. Our process to clean rubber berm traps has safety and profitability of your range in mind. This turnkey solution integrates all our programs and provides all the necessary materials.

Maintenance & Cleaning Programs

Range Visits | Cleaning | Maintenance

Action Target works with you to build a plan for annual range visits, which include specialized services to keep your range running at peak performance.



LEARN MORE
ActionTarget.com/Services

