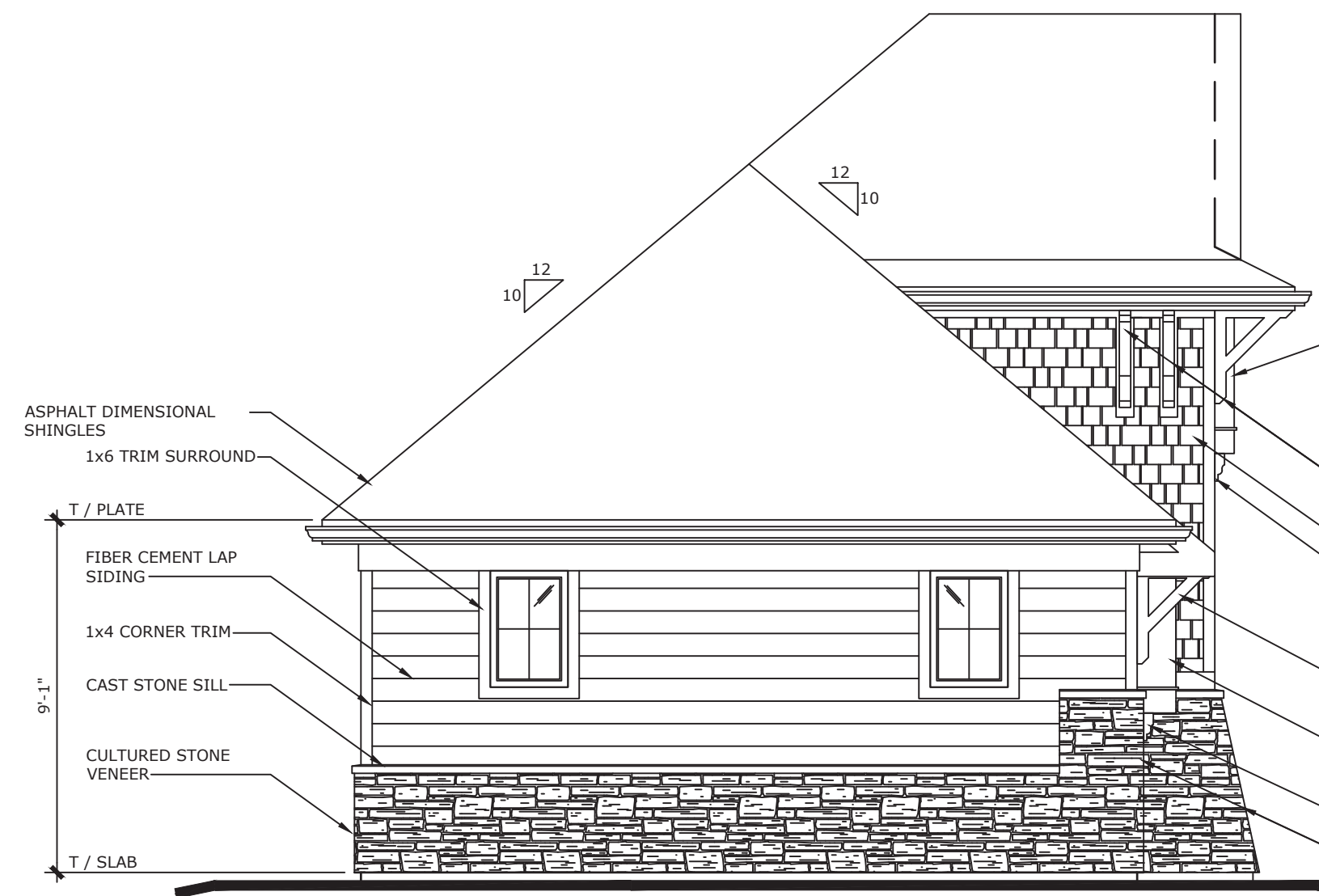
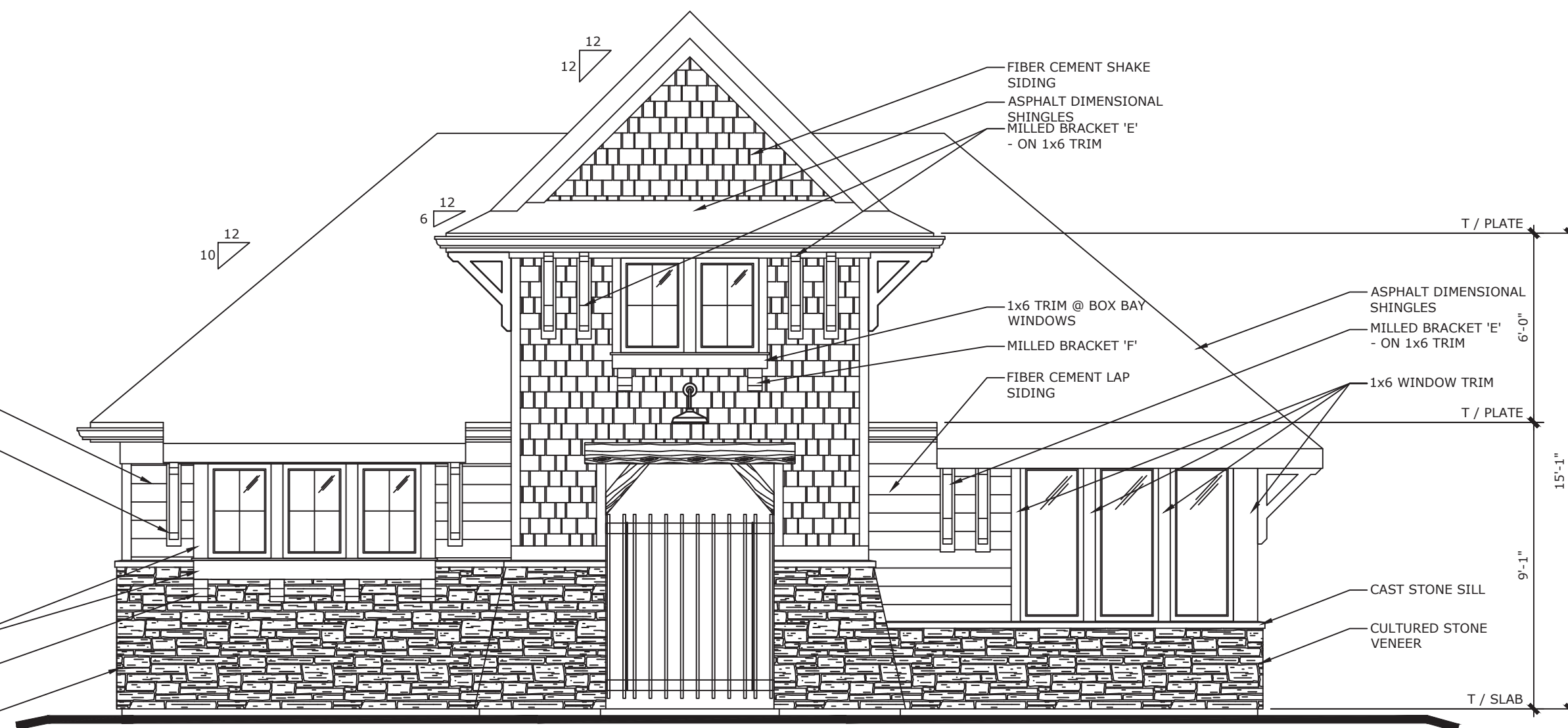
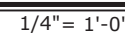


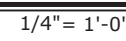
This document, together with the concepts and designs presented herein, is an instrument of service, intended only for the specific purpose and client for which it was prepared. Reuse of and improper reliance on this document without written authorization and adaptation by Kinley-Horn and Associates, Inc., shall be without liability to Kinley-Horn and Associates, Inc.



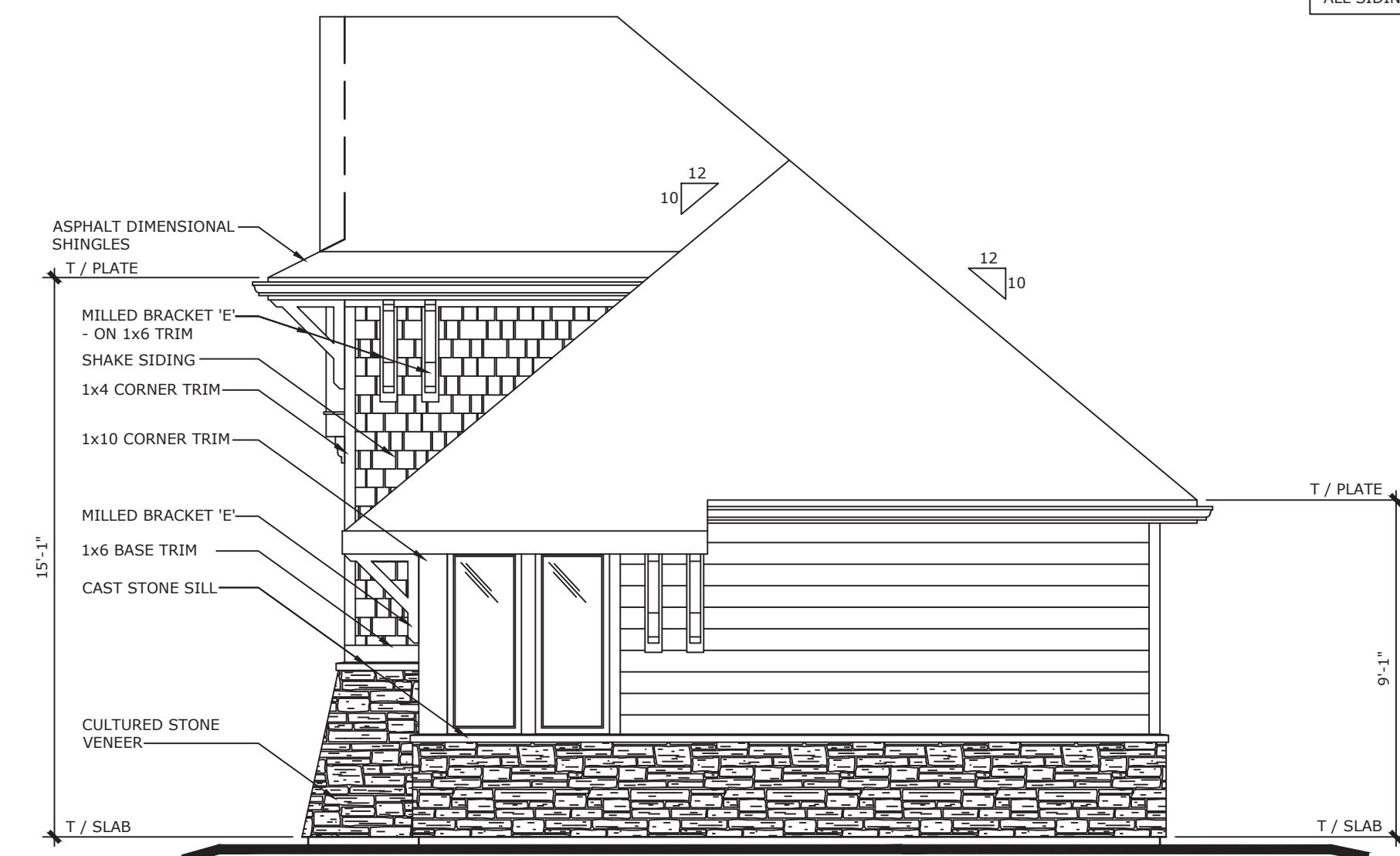
02 LEFT SIDE ELEVATION



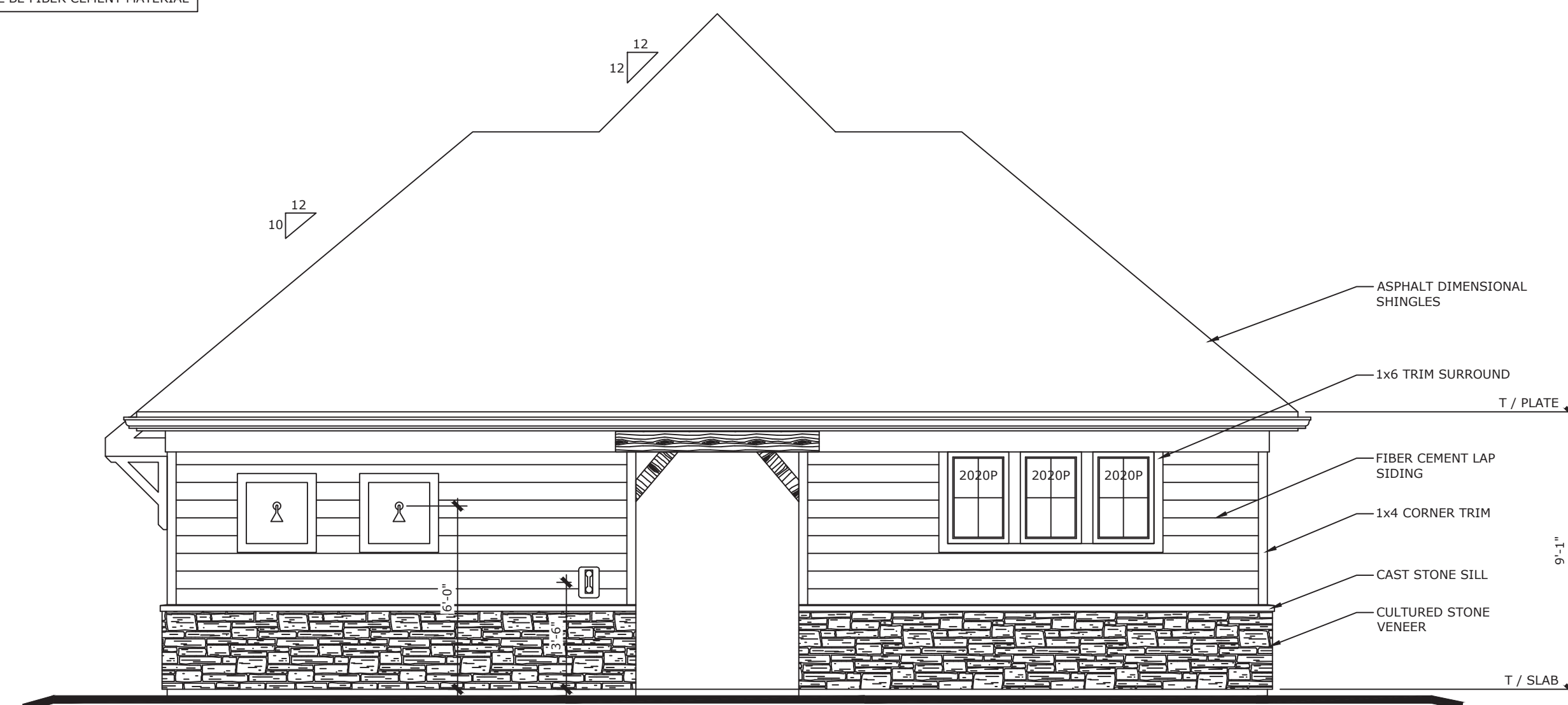
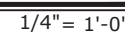
01 FRONT ELEVATION



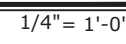
ALL SIDING AND TRIM SHALL BE FIBER CEMENT MATERIAL



04 RIGHT SIDE ELEVATION



03 REAR ELEVATION



<p>ORIGINAL ISSUE: 4/5/2024</p> <p>KHA PROJECT NO. 170227003</p> <p>SHEET NUMBER</p> <p>A200</p>		<p>HAMPTON WALK AMENITY AREA</p>	<p>CABANA ELEVATIONS</p>	<p>GRAND COMMUNITIES, LLC</p>	<p>Kimley»Horn © 2023 KIMLEY-HORN AND ASSOCIATES, INC. 500 EAST 98TH STREET, SUITE 300, MINNEAPOLIS, MN 55425 CONTACT: BRETT HUFF PHONE: 317-912-4129 WWW.KIMLEY-HORN.COM</p> <p>SCALE: AS NOTED DESIGNED BY: JSM DRAWN BY: PCW CHECKED BY: BAH</p> <p>4/5/2024</p>	<p>NO.</p> <p>DATE</p> <p>BY</p>
---	--	---	-------------------------------------	--	--	----------------------------------

This document, together with the concepts and designs presented herein, as an instrument of service, is intended only for the specific purpose and client for which it was prepared. Reuse of and improper reliance on this document without written authorization and adaptation by Kinley-Horn and Associates, Inc. shall be without liability to Kinley-Horn and Associates, Inc.

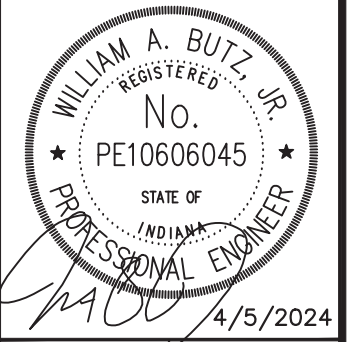


ORIGINAL ISSUE:
4/5/2024
KHA PROJECT NO.
170227003
SHEET NUMBER

HAMPTON WALK
AMENITY AREA

CABANA RENDERING

GRAND
COMMUNITIES,
LLC



SCALE:	AS NOTED
DESIGNED BY:	JSM
DRAWN BY:	PCW
CHECKED BY:	BAH

Kimley»»Horn
© 2023 KIMLEY-HORN AND ASSOCIATES, INC.
500 EAST 96TH STREET, SUITE 300,
INDIANAPOLIS, IN 46240
CONTACT: BRETT HUFF
PHONE: 317-912-4129
EMAIL: Brett.Huff@kimley-horn.com

[illegible]