





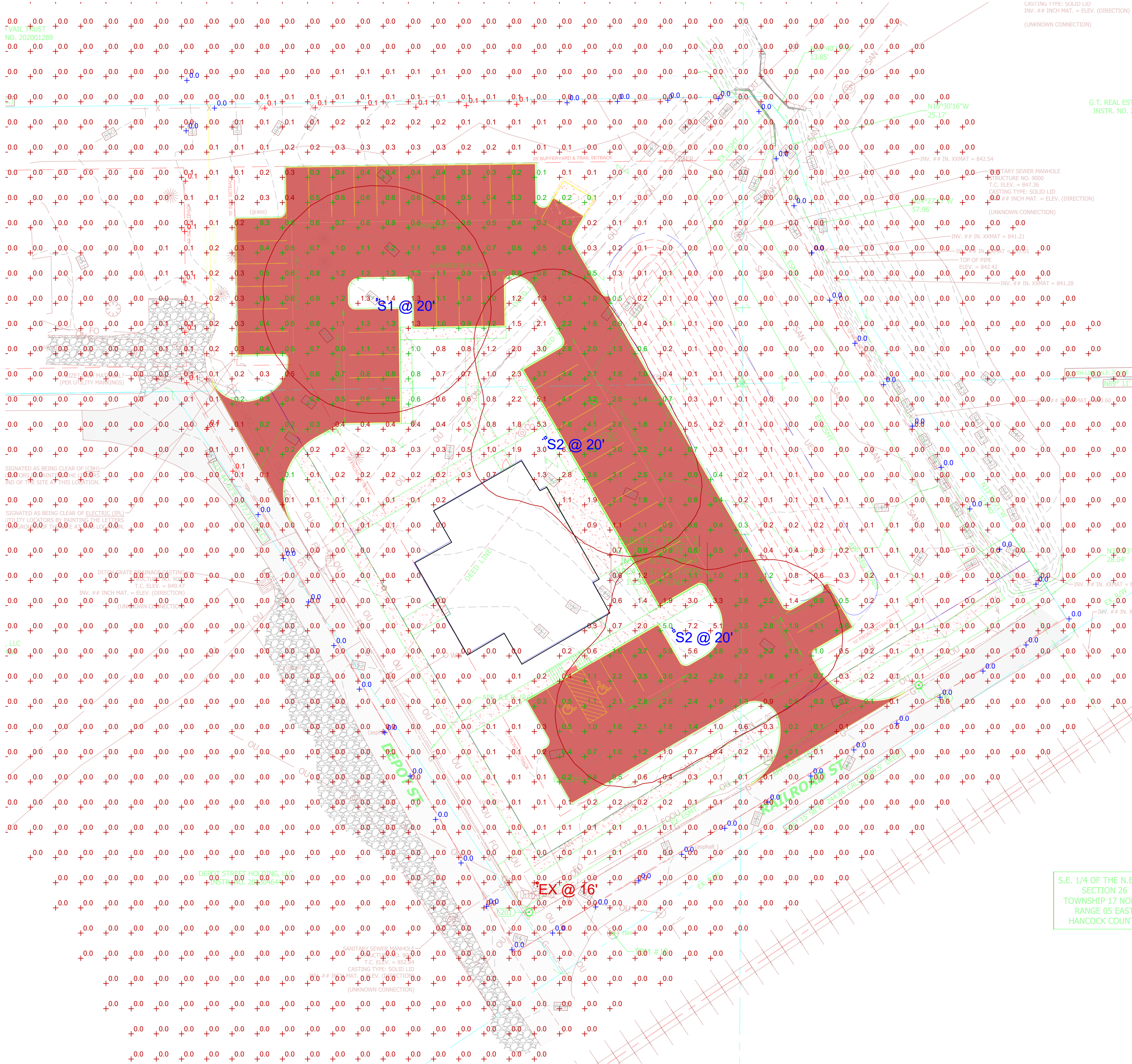


| Statistics | | | | | | |
|---------------------|--------|--------|--------|--------|---------|---------|
| Description | Symbol | Avg | Max | Min | Max/Min | Avg/Min |
| Paved Areas_Grade | ✕ | 1.2 fc | 7.0 fc | 0.1 fc | 70.0:1 | 12.0:1 |
| Site_Grade | + | 0.2 fc | 7.2 fc | 0.0 fc | N/A | N/A |
| Property Line_Grade | + | 0.0 fc | 0.1 fc | 0.0 fc | N/A | N/A |

| Schedule | | | | | | | | |
|---|-------|---|----------|---------------------|---|---|-----------------|---------|
| Symbol | Label | Image | Quantity | Manufacturer | Catalog Number | Description | Lumens Per Lamp | Wattage |
|  | S1 |  | 1 | Lithonia Lighting | RSX1 LED P2 40K R5 MVOLT SPA XXXXX MOUNTED AT 20' ON 18" SSS POLE WITH 2" BASE | RSX Area Fixture Size 1 P2 Lumen Package 4000K CCT Type RS Distribution | 10106 | 72.95 |
|  | S2 |  | 2 | Lithonia Lighting | RSX2 LED P2 40K R3 MVOLT SPA XXXXX MOUNTED AT 20' ON 18" SSS POLE WITH 2" BASE | RSX Area Fixture Size 2 P2 Lumen Package 4000K CCT Type RS Distribution | 17202 | 114.07 |
|  | EX |  | 1 | SUN VALLEY LIGHTING | SIGMA SERIES- EXISTING POLE ASSEMBLY | CAST BLACK PAINTED POST TOP METAL HOUSING | 123 | 79.2 |

LIGHTING PHOTOMETRIC
SCALE : 1" = 1FT



- GENERAL PLAN NOTES:
- MH: AS NOTED
 - POINTS CALCULATED AT: GRADE
 - LIGHT LOSS FACTOR: AS NOTED
 - CONTACT ANDREA HERRINGTON FOR PRICING/QUOTATION INFORMATION

| | | |
|-----|----------------|------|
| No. | Revision/Issue | Date |
| | | |
| | | |

Firm Name and Address

LIGHT|source
THE LIGHTING & CONTROLS EXPERTS

8719 CASTLE PARK DRIVE
INDIANAPOLIS, IN 46256
WWW.LIGHTSOURCEINDIANA.COM
p.317-598-6900

Project Name and Address

GREENTOUCH
MCCORDSVILLE, INDIANA

EXTERIOR LIGHTING PHOTOMETRIC

Drawn By
ARH

Scale
As Noted

Date
4/28/2024

Drawing #
LS-24-2011 SITE

Sheet No.
E101

Disclaimer:
This lighting submitted is strictly based on the information provided to LIGHTsource, and is provided without warranty as to accuracy, completeness, reliability or otherwise. If the information (including but not limited to floor plans, reflected ceiling plans, electrical plans and specifications) provided to LIGHTsource is incomplete or not current (i.e., newer versions exist), the accuracy of proposed design may be adversely affected. Once this lighting submitted is received by the customer or end-user (as applicable) it is the obligation of the customer or end-user (as applicable) to consult with a professional engineering advisor to determine whether the proposed design meets the applicable project requirements for lighting system performance, code compliance, safety, suitability and effectiveness for use in a particular application. In no event will LIGHTsource be responsible for any loss resulting from any use of any information contained in this lighting submitted.