

THIS INSTRUMENT PREPARED BY:

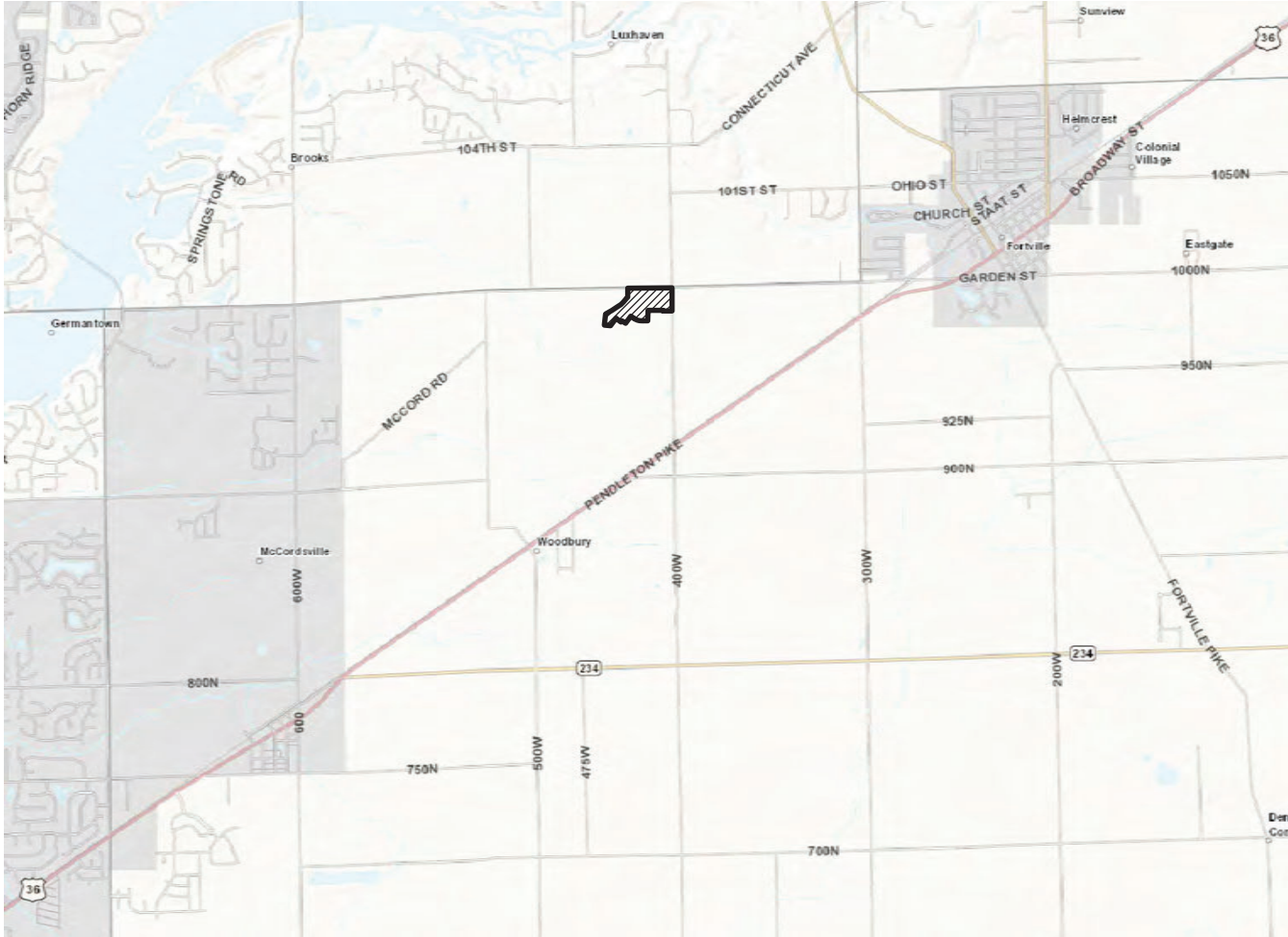
BANNING
ENGINEERING
KEVIN W. ROWLAND, PS
BANNING ENGINEERING, PC
853 COLUMBIA ROAD, SUITE #101
PLAINFIELD, INDIANA 46168
PHONE: 317-707-3700
EMAIL: BANNING@BANNING-ENG.COM
WEB: WWW.BANNINGENGINEERING.COM

THIS INSTRUMENT PREPARED FOR:
M/I HOMES OF INDIANA, L.P.
C/O MICHAEL REEVE
8425 WOODFIELD CROSSING BLVD, SUITE 100W
INDIANAPOLIS, IN 46240

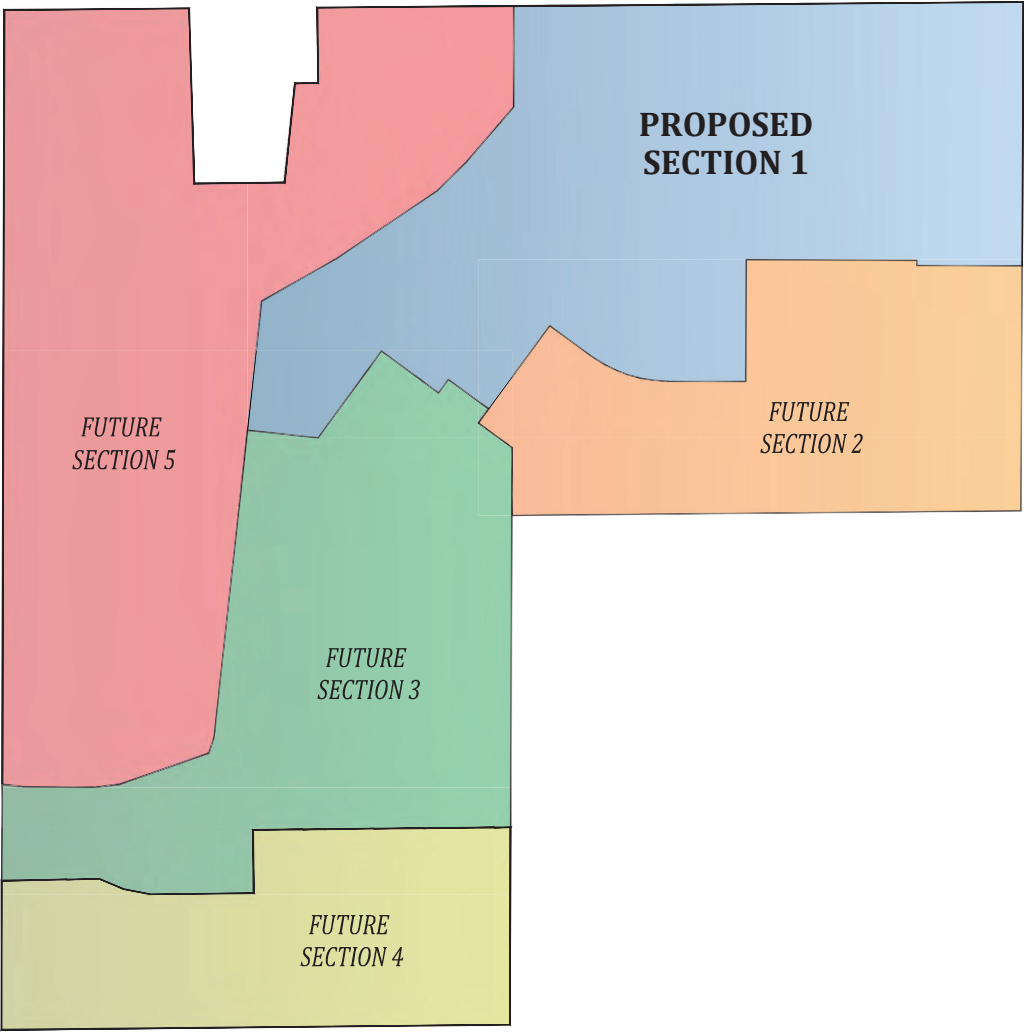
HELM'S MILL, SECTION 1 - FINAL PLAT

PART OF THE NE 1/4, SEC. 18-T17N-R6E
HANCOCK COUNTY, INDIANA

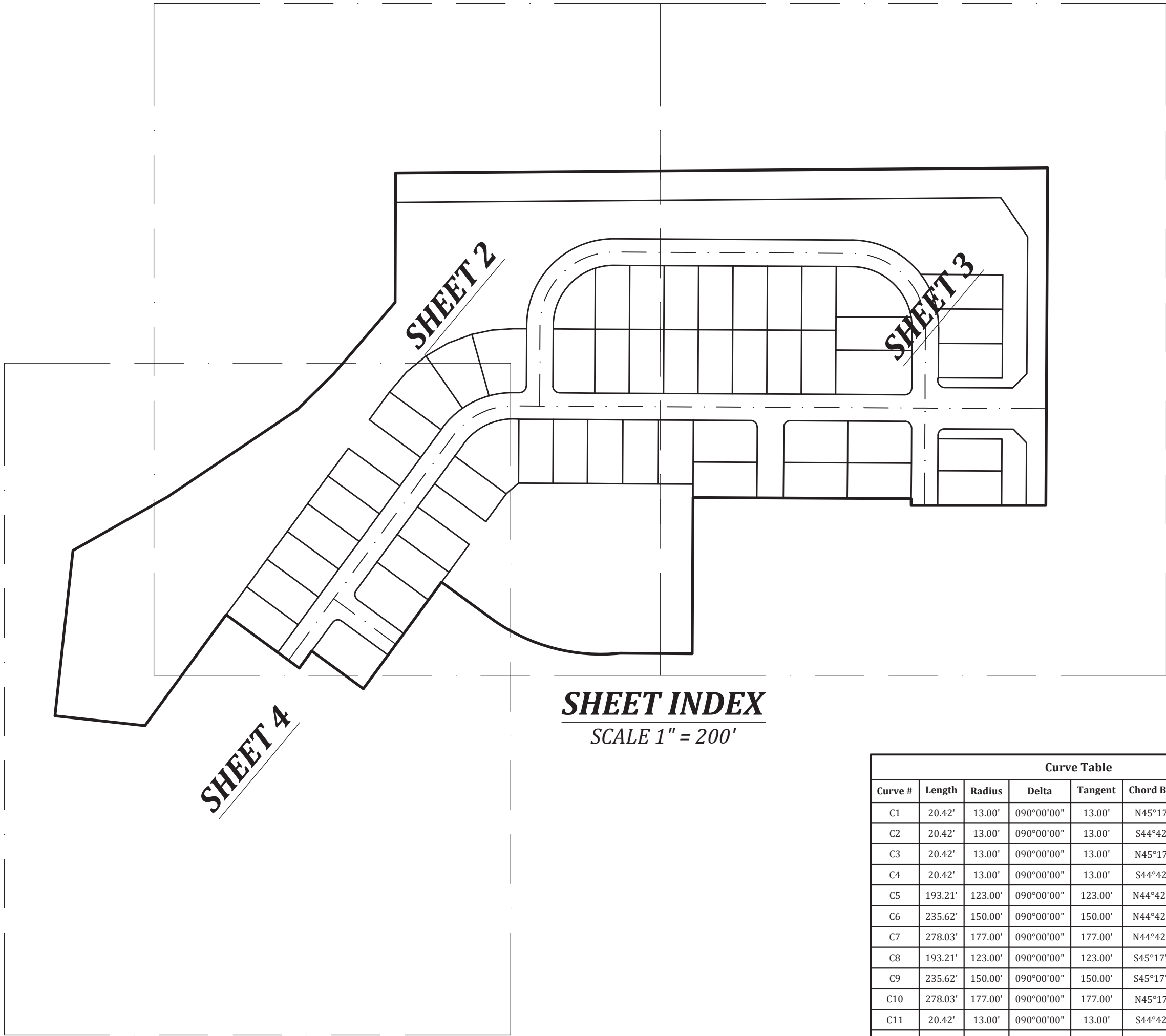
INSTR. NO. : _____
CABINET : _____
SLIDE : _____



VICINITY MAP
NO SCALE



KEY MAP
SCALE 1" = 500'



SHEET INDEX
SCALE 1" = 200'



Curve Table						
Curve #	Length	Radius	Delta	Tangent	Chord Bearing	Chord Distance
C1	20.42'	13.00'	090°00'00"	13.00'	N45°17'58"E	18.38'
C2	20.42'	13.00'	090°00'00"	13.00'	S44°42'02"E	18.38'
C3	20.42'	13.00'	090°00'00"	13.00'	N45°17'58"E	18.38'
C4	20.42'	13.00'	090°00'00"	13.00'	S44°42'02"E	18.38'
C5	193.21'	123.00'	090°00'00"	123.00'	N44°42'02"W	173.95'
C6	235.62'	150.00'	090°00'00"	150.00'	N44°42'02"W	212.13'
C7	278.03'	177.00'	090°00'00"	177.00'	N44°42'02"W	250.32'
C8	193.21'	123.00'	090°00'00"	123.00'	S45°17'58"W	173.95'
C9	235.62'	150.00'	090°00'00"	150.00'	S45°17'58"W	212.13'
C10	278.03'	177.00'	090°00'00"	177.00'	N45°17'58"E	250.32'
C11	20.42'	13.00'	090°00'00"	13.00'	S44°42'02"E	18.38'
C12	20.42'	13.00'	090°00'00"	13.00'	N45°17'58"E	18.38'
C13	116.02'	123.00'	054°02'34"	62.73'	N63°16'40"E	111.76'
C14	141.48'	150.00'	054°02'34"	76.50'	S63°16'40"W	136.30'
C15	166.95'	177.00'	054°02'34"	90.27'	N63°16'40"E	160.83'
C16	20.42'	13.00'	090°00'00"	13.00'	N08°44'37"W	18.38'
C17	20.42'	13.00'	090°00'00"	13.00'	N81°15'23"E	18.38'
C18	20.42'	13.00'	090°00'00"	13.00'	S44°42'02"E	18.38'
C19	20.42'	13.00'	090°00'00"	13.00'	N45°17'58"E	18.38'

Witness my signature this ____ day of _____, 202__.

Signature _____

Kevin W. Rowland - Professional Surveyor - Indiana - # LS29600015

BANNING
ENGINEERING
853 COLUMBIA ROAD, SUITE #101
PLAINFIELD, IN 46168
BUS: (317) 707-3700, FAX: (317) 707-3800
E-MAIL: Banning@BanningEngineering.com
WEB: www.BanningEngineering.com

PRELIMINARY PLAT

Checked: _____ Date: _____

FINAL PLAT

Checked: _____ Date: _____

RECORDING

Checked: _____ Date: _____

Drawn: CH

Scale: 1"=200'

Date: 12/20/23

Project: 23138-S1

Sheet 1 of 5

PART OF THE NE 1/4, SEC. 18-T17N-R6E
HANCOCK COUNTY, INDIANA

INSTR. NO.: _____
CABINET: _____
SLIDE: _____



PART OF THE NE 1/4, SEC. 18-T17N-R6E
HANCOCK COUNTY, INDIANA

INSTR. NO. : _____
CABINET : _____
SLIDE : _____

