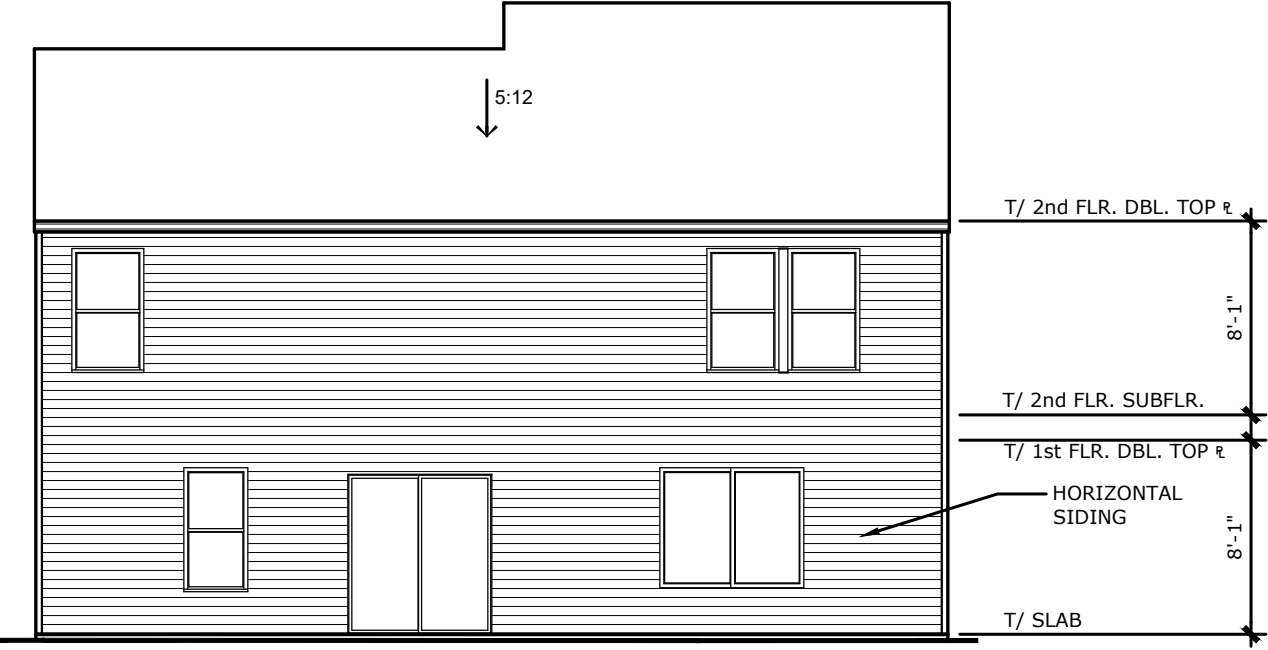
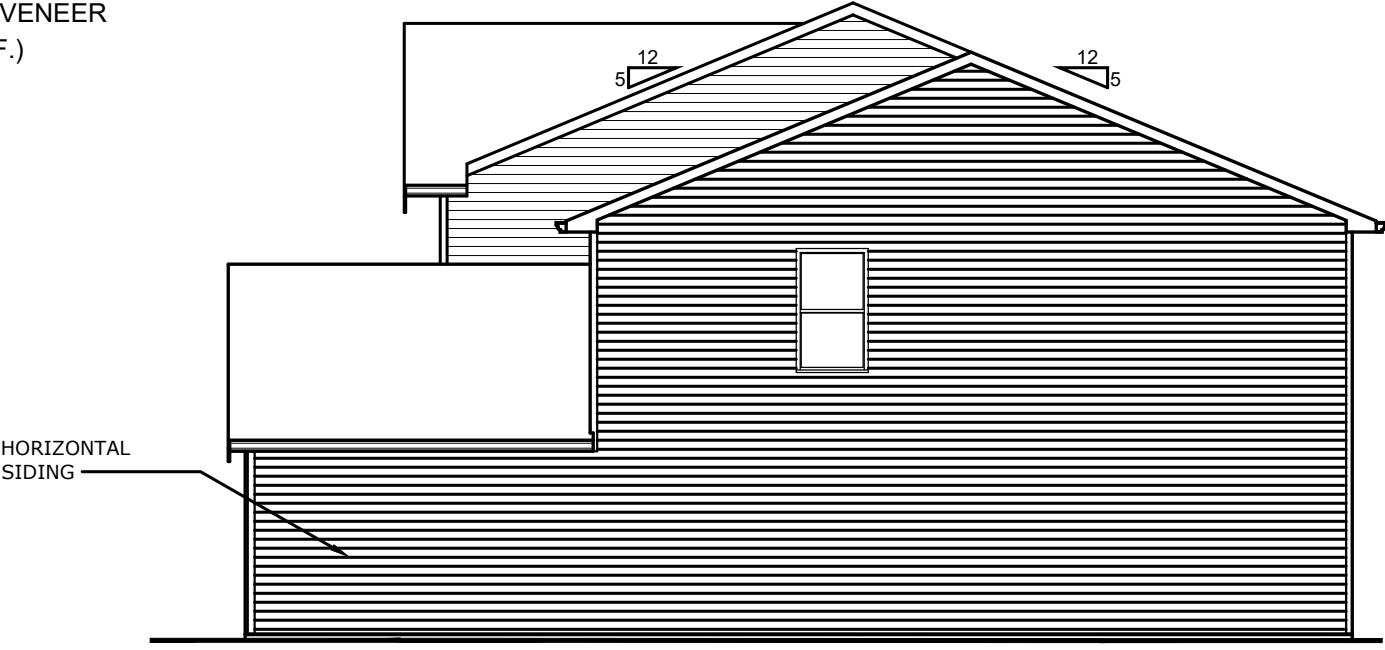


FAIRFAX  
COASTAL CLASSIC  
w/ OPT. BRICK VENEER  
(2330 S.F.)



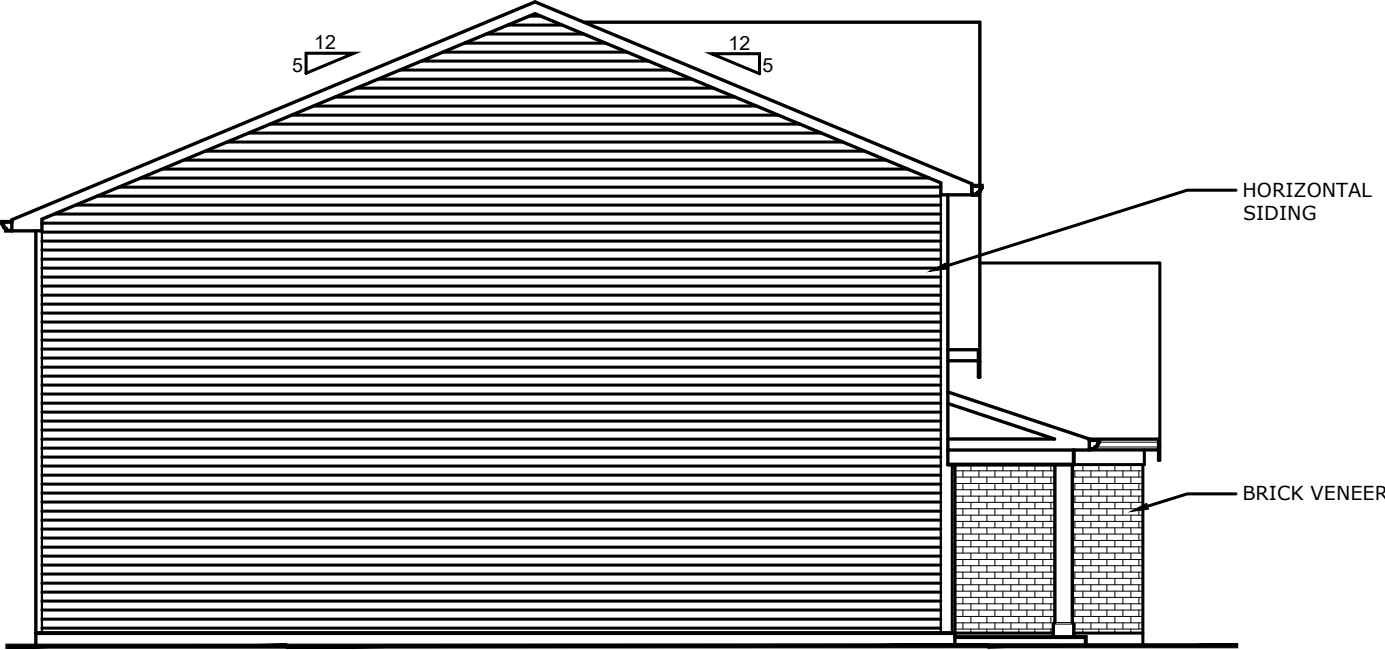
REAR ELEVATION

SCALE 1/8" = 1'-0"



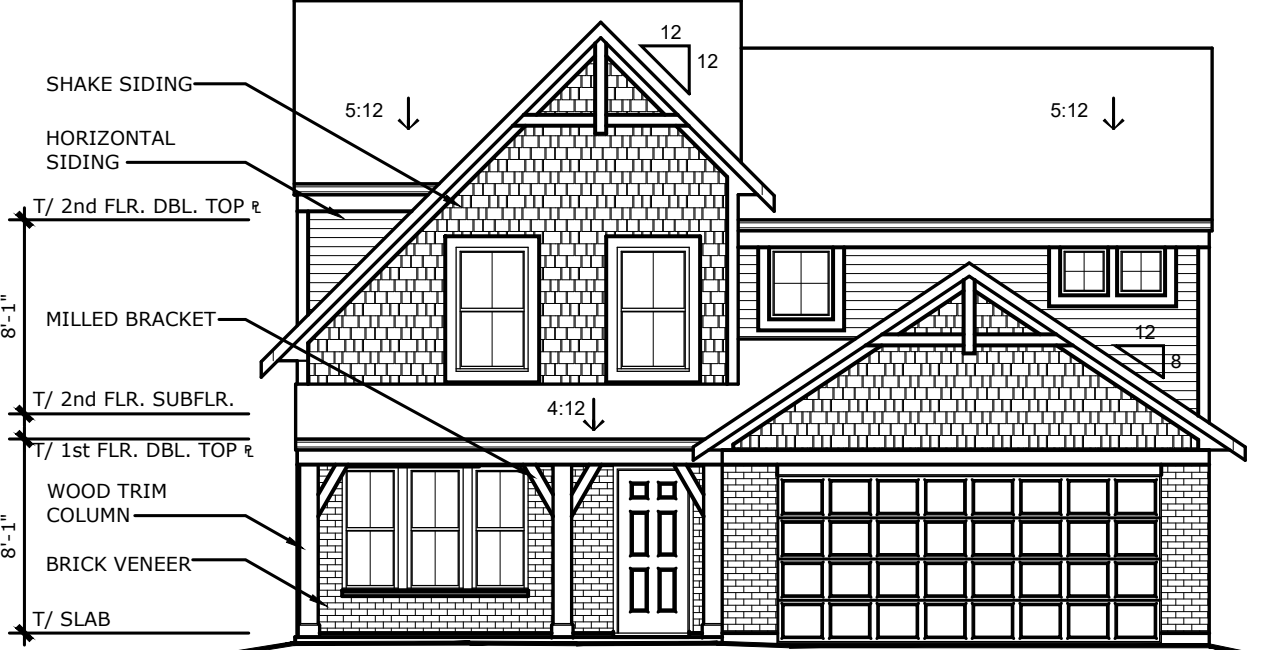
RIGHT SIDE ELEVATION

SCALE 1/8" = 1'-0"



LEFT SIDE ELEVATION

SCALE 1/8" = 1'-0"



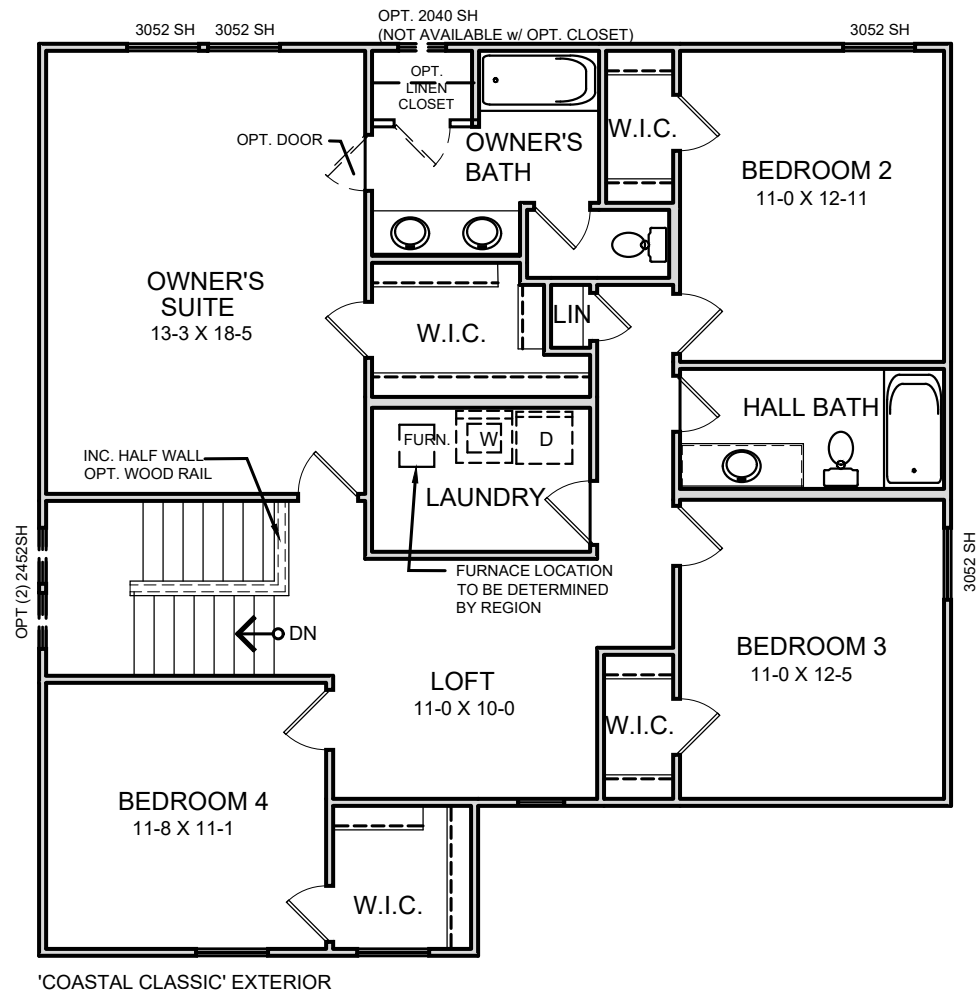
FRONT ELEVATION

SCALE 1/8" = 1'-0"



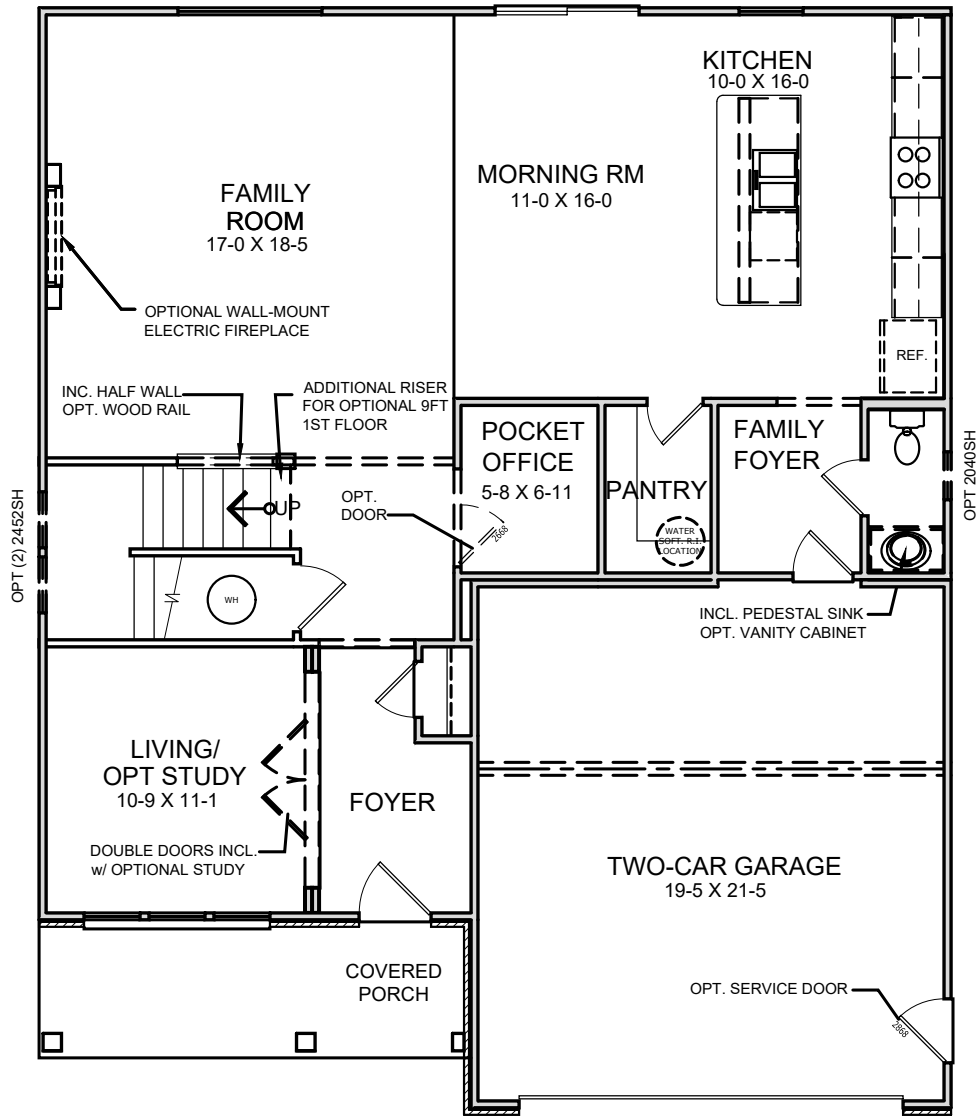
TO INCORPORATE NEW AND IMPROVED PRODUCTS,  
FEATURES, AND IDEAS, WE RESERVE THE RIGHT TO  
CHANGE DESIGNS WITHOUT NOTICE. COPYRIGHT © 2023  
FISCHER HOMES, INC. ALL RIGHTS RESERVED.

FAIRFAX  
COASTAL CLASSIC  
w/ OPT. BRICK VENEER  
(2330 S.F.)



SECOND FLOOR PLAN

SCALE 1/8" = 1'-0"



FIRST FLOOR PLAN

SCALE 1/8" = 1'-0"



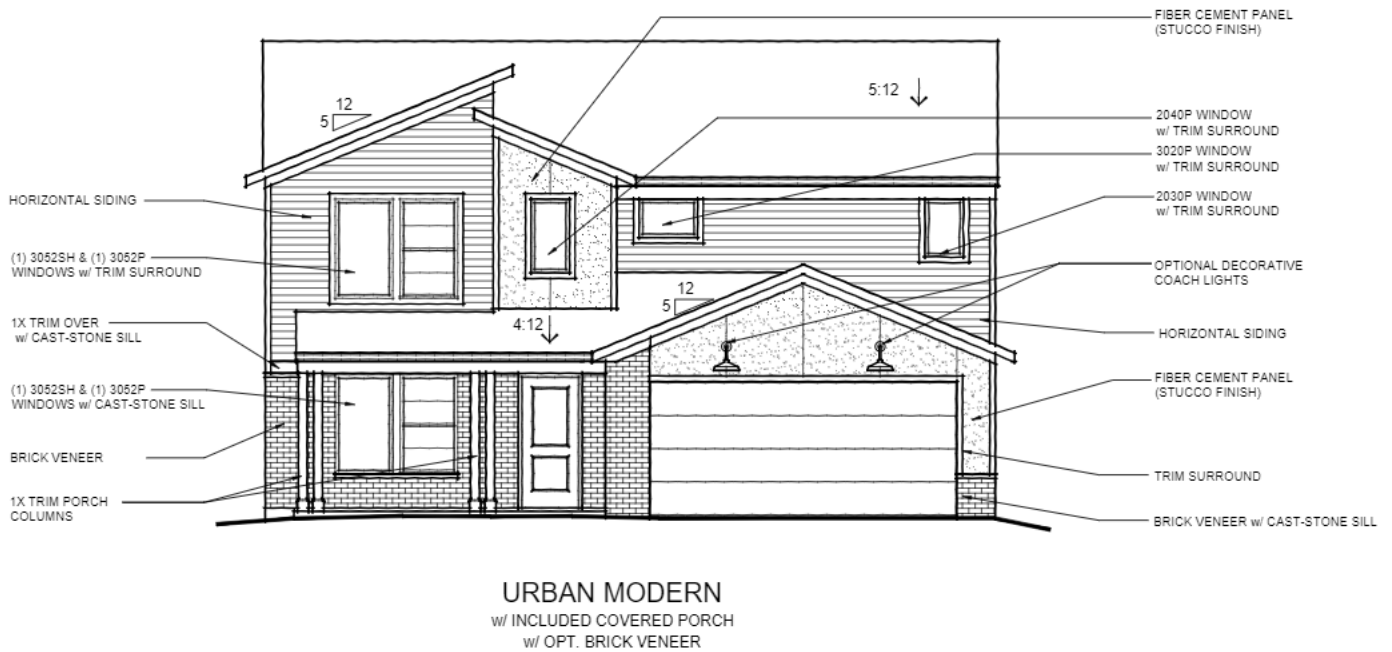
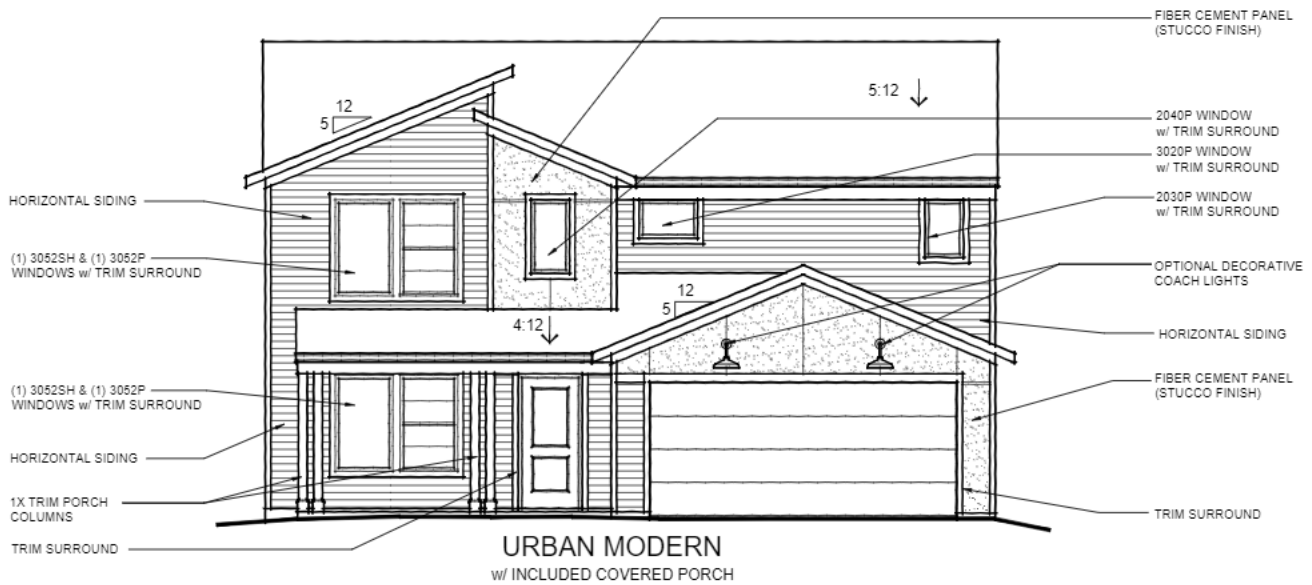
TO INCORPORATE NEW AND IMPROVED PRODUCTS,  
FEATURES, AND IDEAS, WE RESERVE THE RIGHT TO  
CHANGE DESIGNS WITHOUT NOTICE. COPYRIGHT © 2023  
FISCHER HOMES, INC. ALL RIGHTS RESERVED.

Fairfax Urban Modern



# FAIRFAX

38-630  
MAPLE STREET COLLECTION



TO INCORPORATE NEW AND IMPROVED PRODUCTS, FEATURES, AND IDEAS, WE RESERVE THE RIGHT TO CHANGE DESIGNS WITHOUT NOTICE. COPYRIGHT © 2021 FISCHER HOMES, INC. ALL RIGHTS RESERVED.

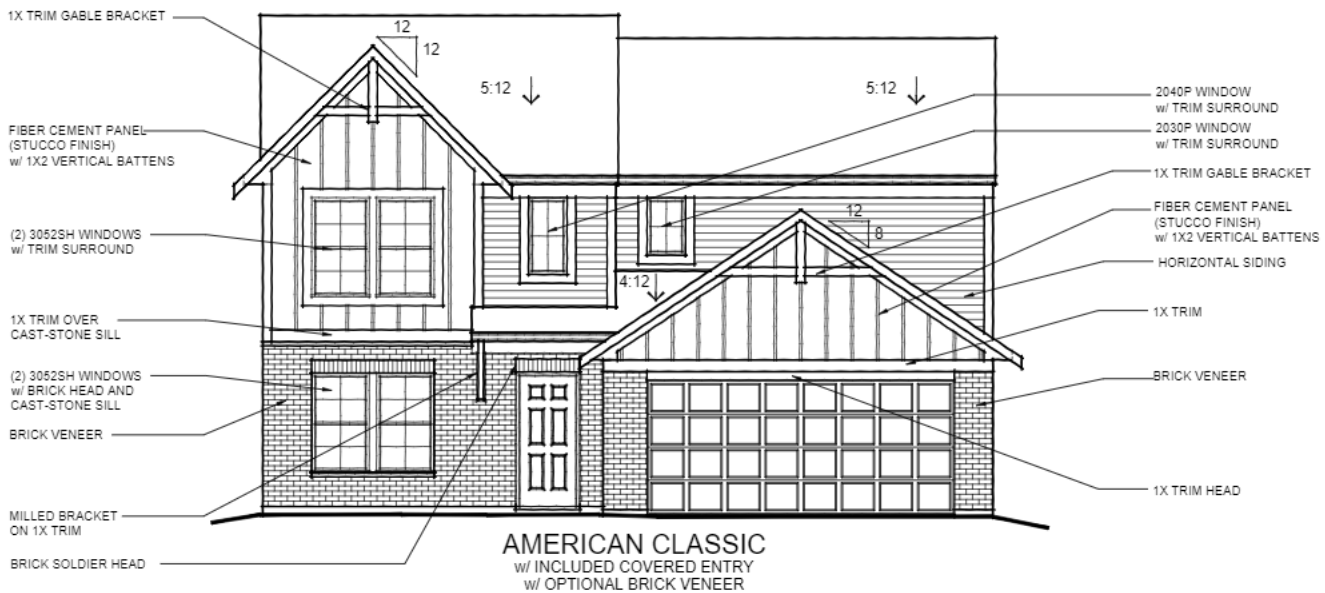
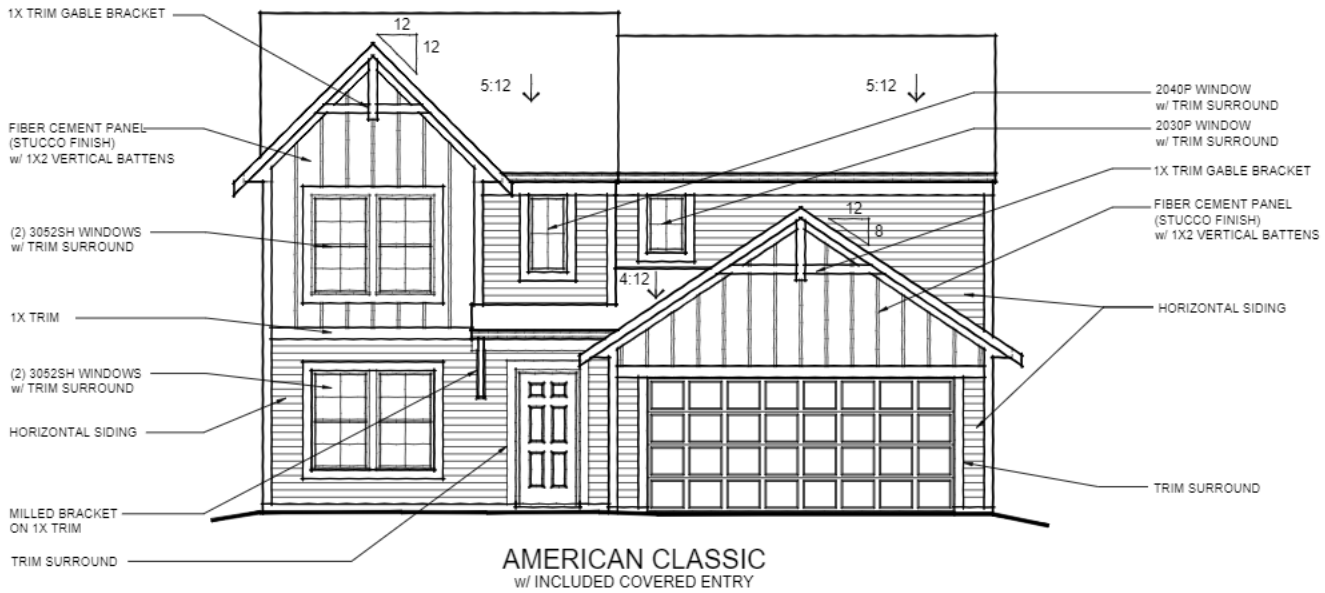
FF-2.3  
05.01.2021

Fairfax American Classic with Brick



# FAIRFAX

38-630  
MAPLE STREET COLLECTION



TO INCORPORATE NEW AND IMPROVED PRODUCTS, FEATURES, AND IDEAS, WE RESERVE THE RIGHT TO CHANGE DESIGNS WITHOUT NOTICE. COPYRIGHT © 2021 FISCHER HOMES, INC. ALL RIGHTS RESERVED.

FF-2.1  
05.01.2021

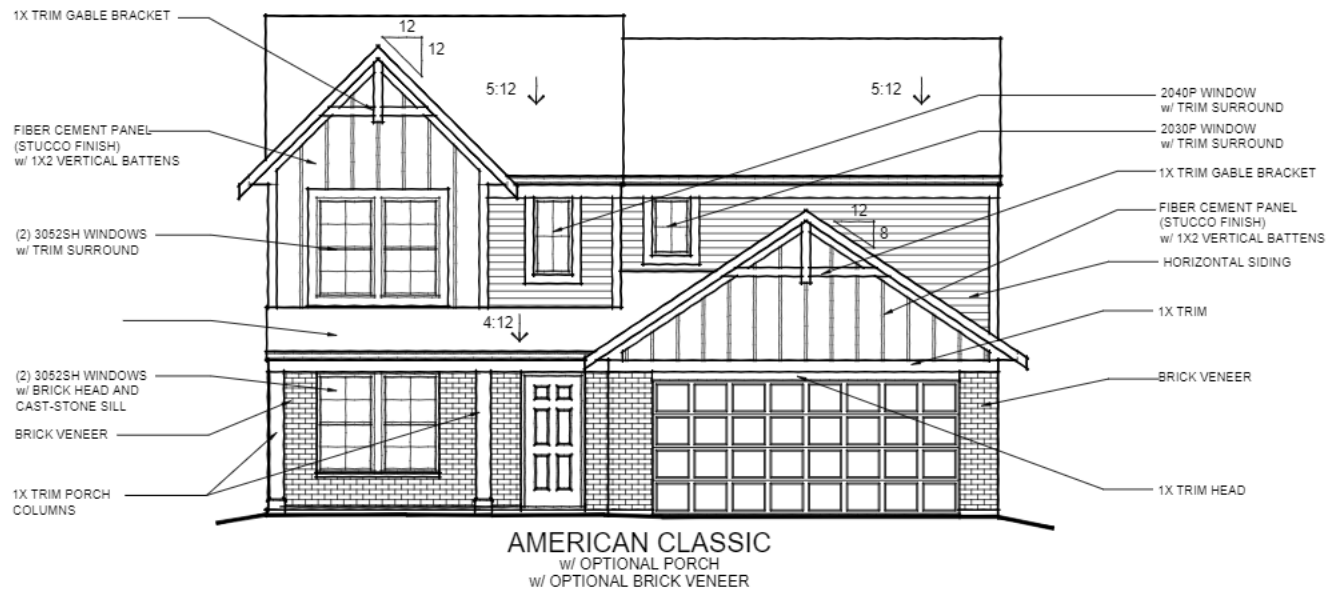
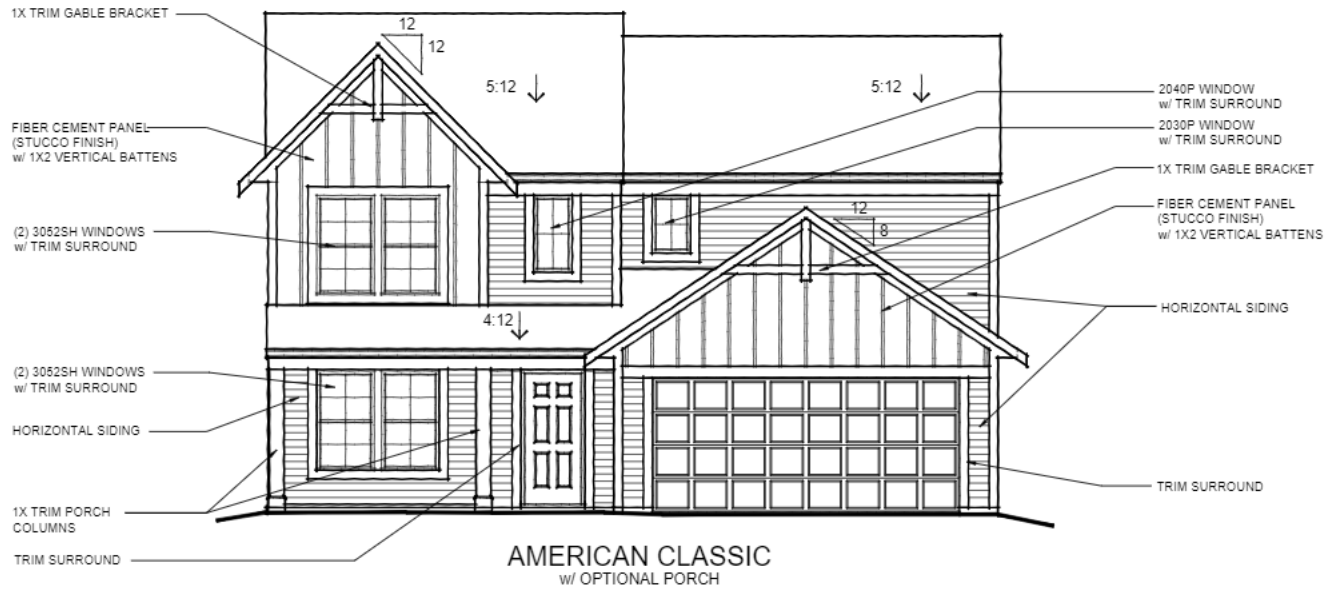


Fairfax American Classic with Extended Porch



# FAIRFAX

38-630  
MAPLE STREET COLLECTION



TO INCORPORATE NEW AND IMPROVED PRODUCTS, FEATURES, AND IDEAS, WE RESERVE THE RIGHT TO CHANGE DESIGNS WITHOUT NOTICE. COPYRIGHT © 2021 FISCHER HOMES, INC. ALL RIGHTS RESERVED.

FF-2.2  
05.01.2021

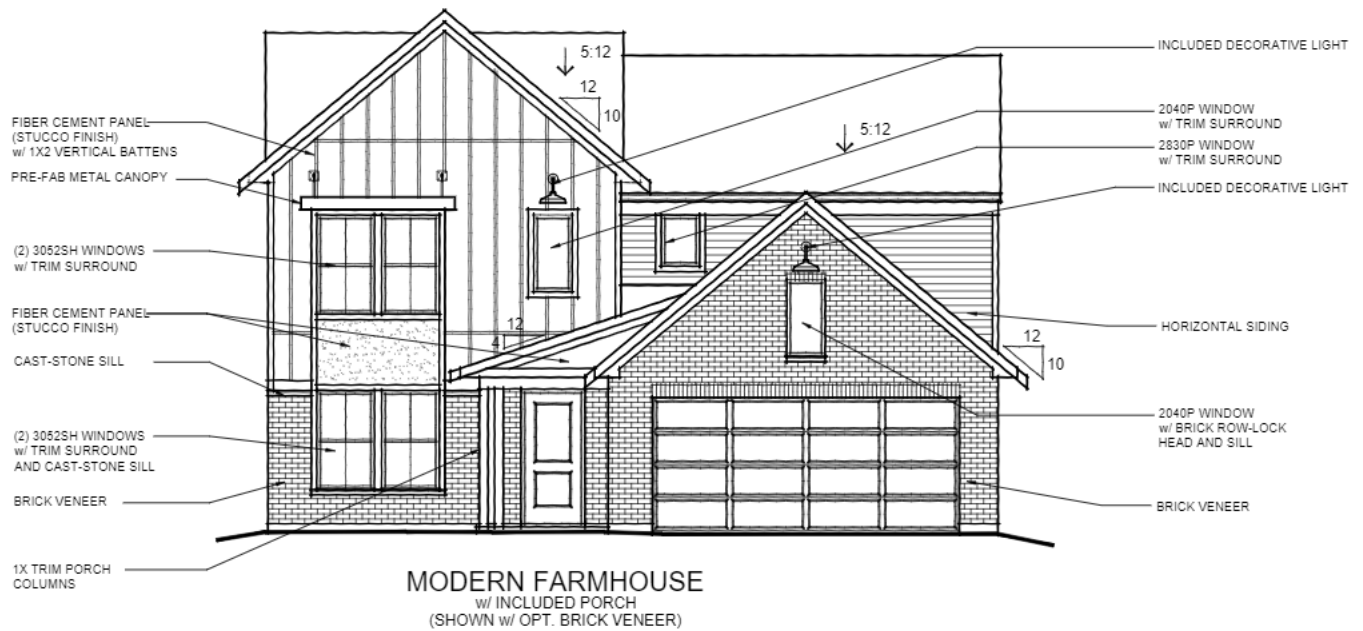


Fairfax Modern Farmhouse



# FAIRFAX

38-630  
MAPLE STREET COLLECTION

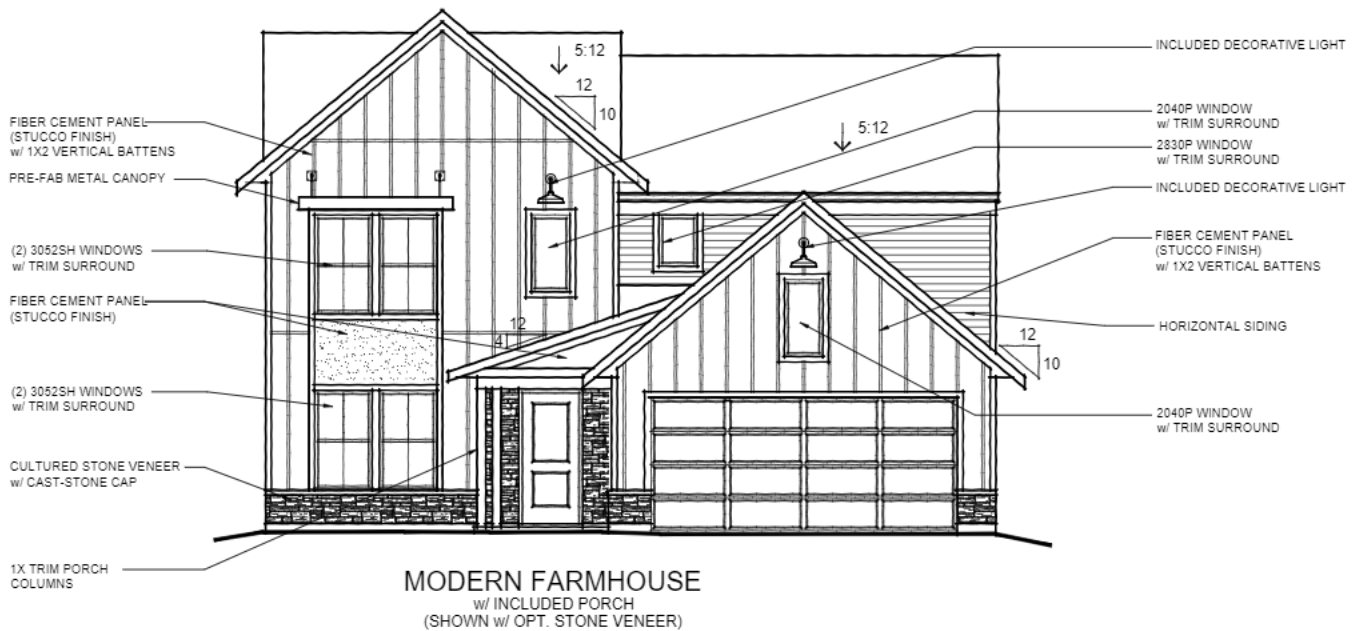
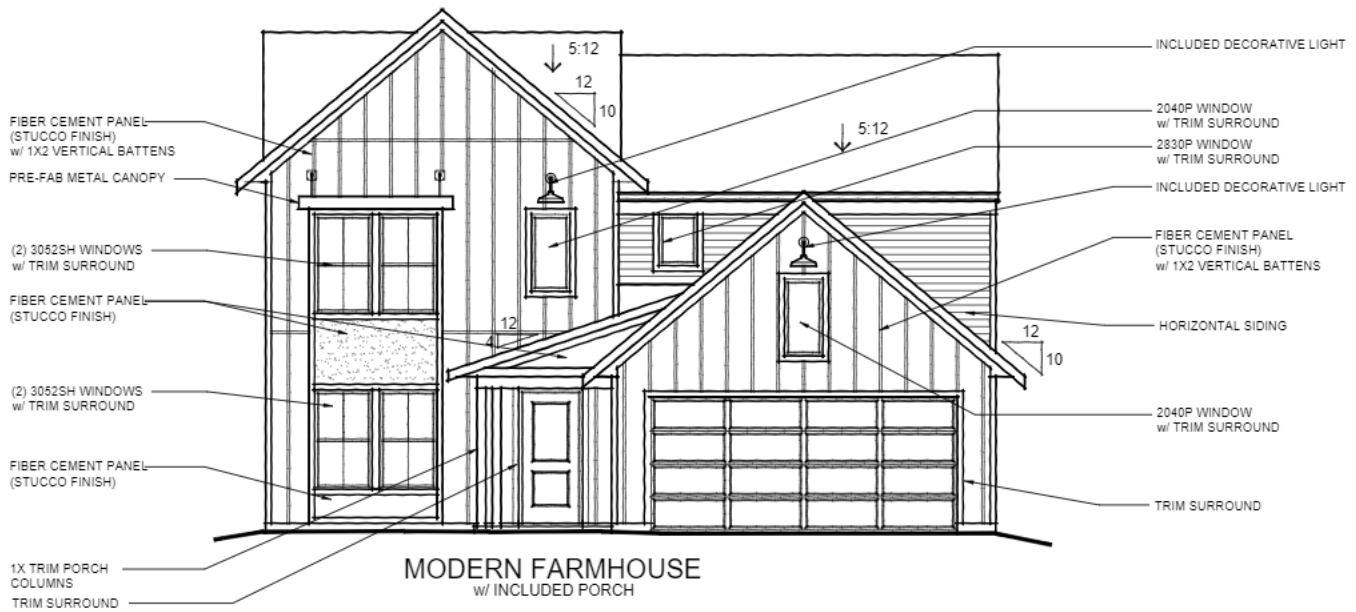


TO INCORPORATE NEW AND IMPROVED PRODUCTS, FEATURES, AND IDEAS, WE RESERVE THE RIGHT TO CHANGE DESIGNS WITHOUT NOTICE. COPYRIGHT © 2021 FISCHER HOMES, INC. ALL RIGHTS RESERVED.

FF-2.6  
05.01.2021

# FAIRFAX

38-630  
MAPLE STREET COLLECTION



TO INCORPORATE NEW AND IMPROVED PRODUCTS, FEATURES, AND IDEAS, WE RESERVE THE RIGHT TO CHANGE DESIGNS WITHOUT NOTICE. COPYRIGHT © 2021 FISCHER HOMES, INC. ALL RIGHTS RESERVED.

FF-2.5  
05.01.2021

Fairfax Coastal Cottage



# FAIRFAX

38-630  
MAPLE STREET COLLECTION



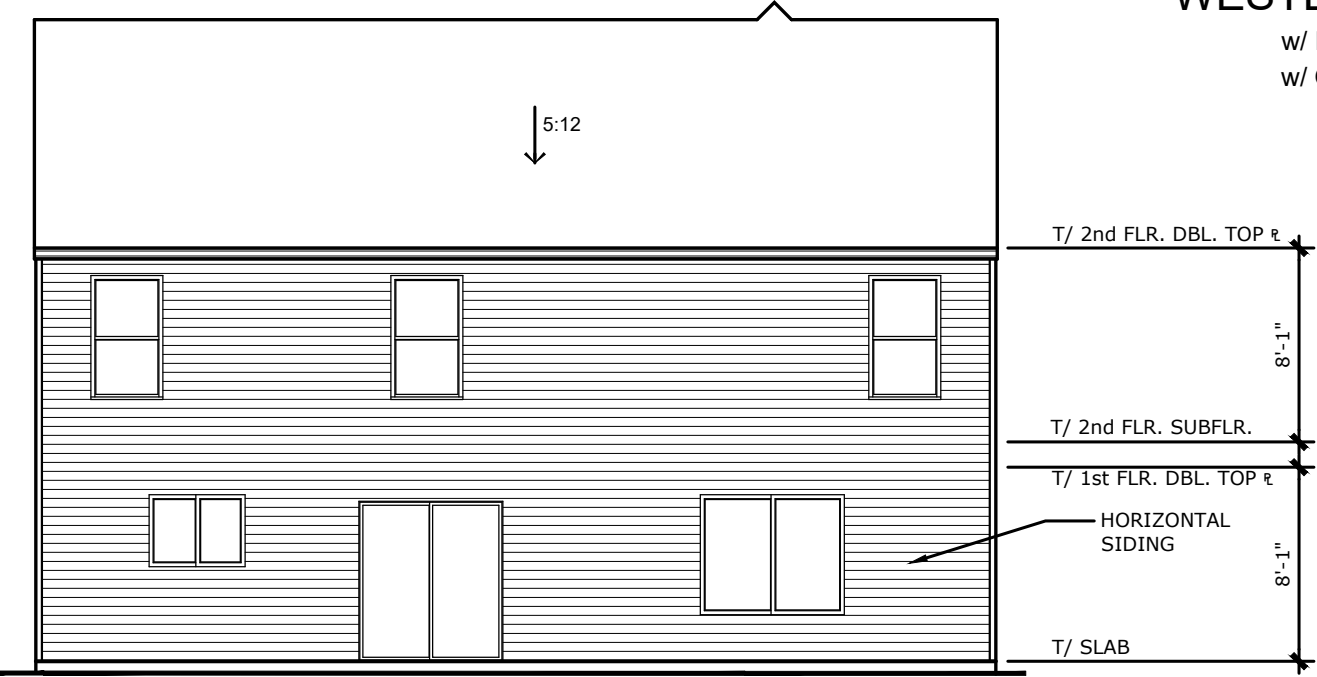
TO INCORPORATE NEW AND IMPROVED PRODUCTS, FEATURES, AND IDEAS, WE RESERVE THE RIGHT TO CHANGE DESIGNS WITHOUT NOTICE. COPYRIGHT © 2021 FISCHER HOMES, INC. ALL RIGHTS RESERVED.

FF-2.4  
05.01.2021



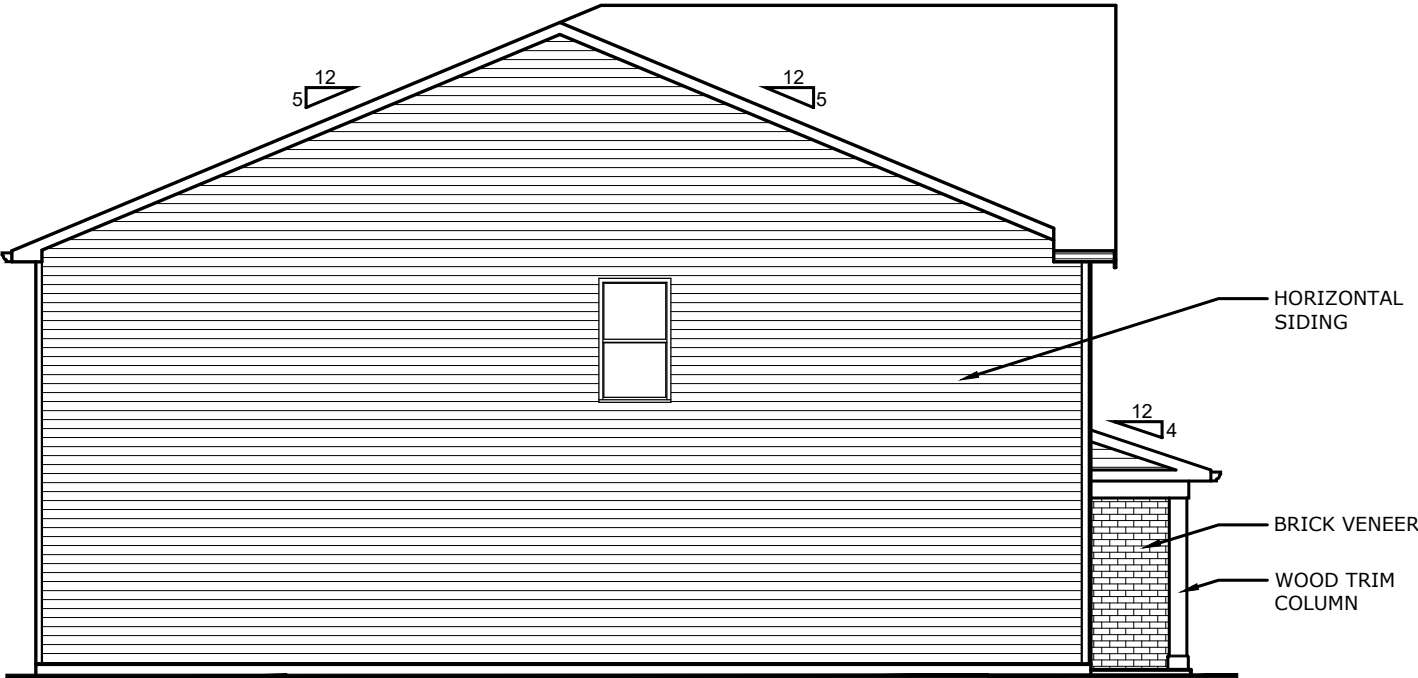
BRECKENRIDGE  
WESTERN CRAFTSMAN

w/ INCL. ENTRY PORCH  
w/ OPT. BRICK VENEER  
(3135 S.F.)



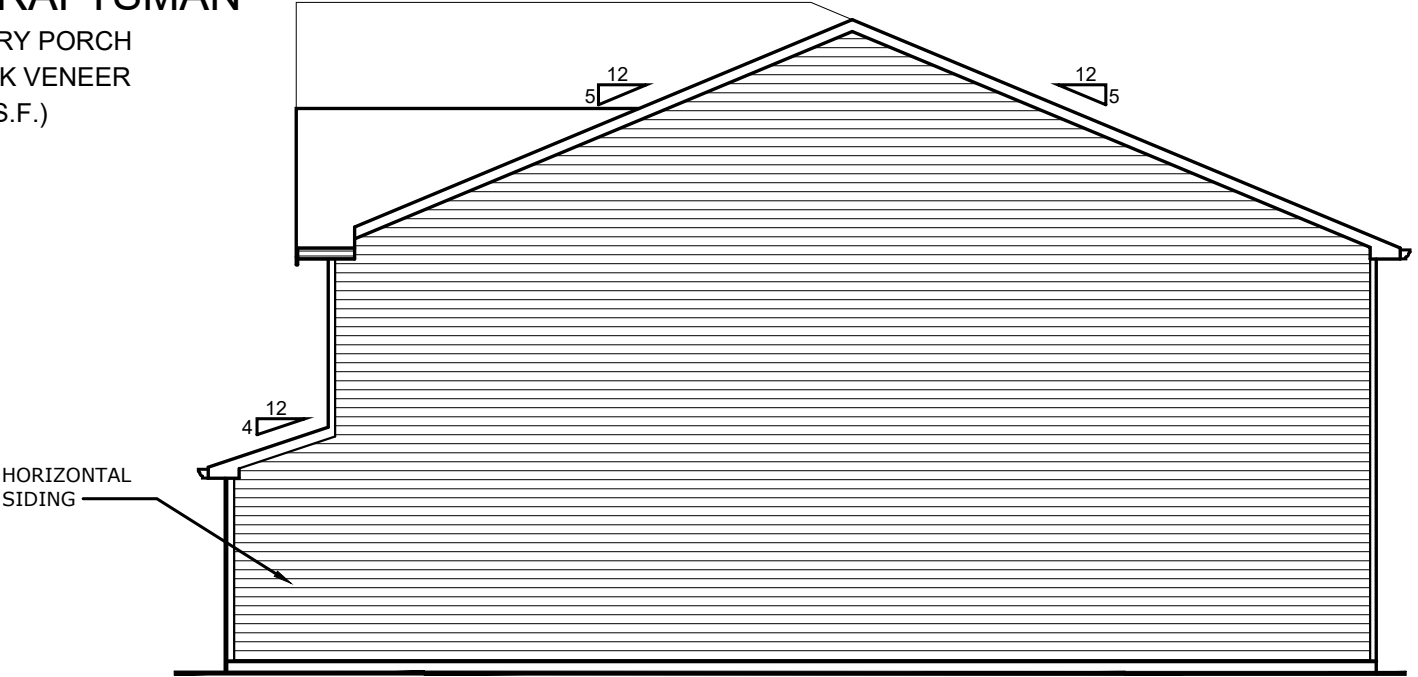
REAR ELEVATION

SCALE 1/8" = 1'-0"



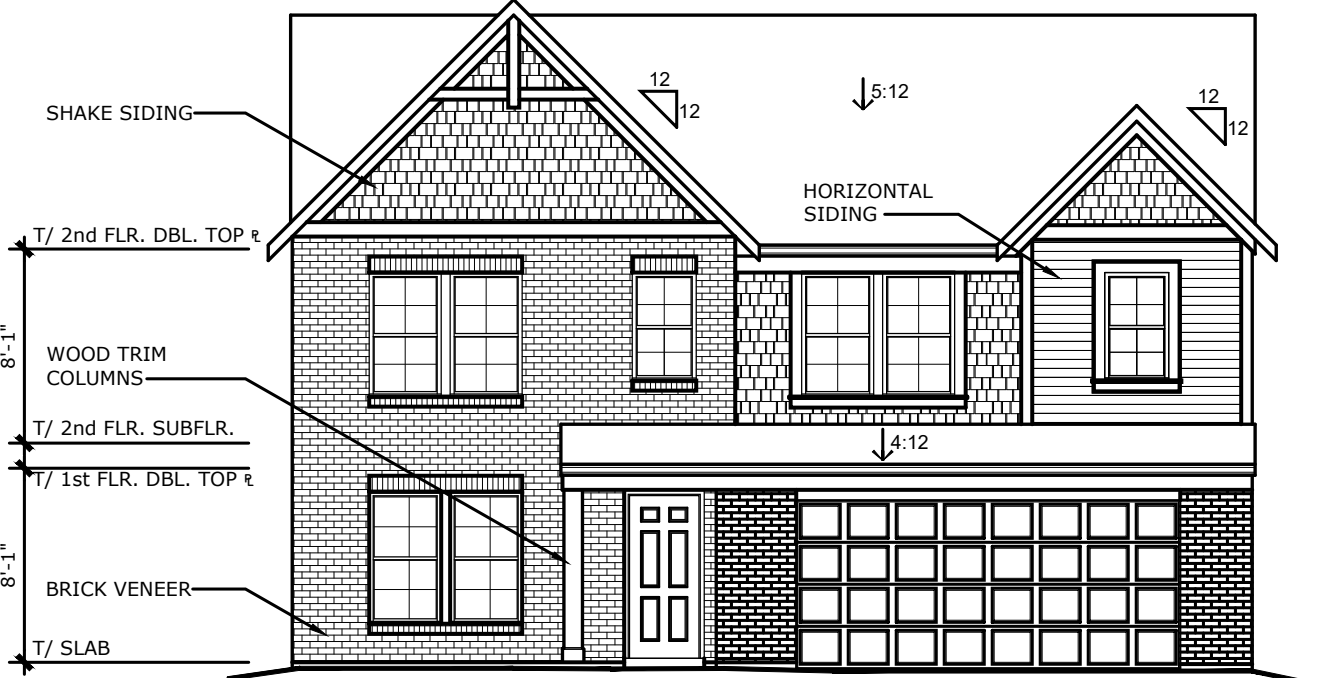
LEFT SIDE ELEVATION

SCALE 1/8" = 1'-0"



RIGHT SIDE ELEVATION

SCALE 1/8" = 1'-0"



FRONT ELEVATION

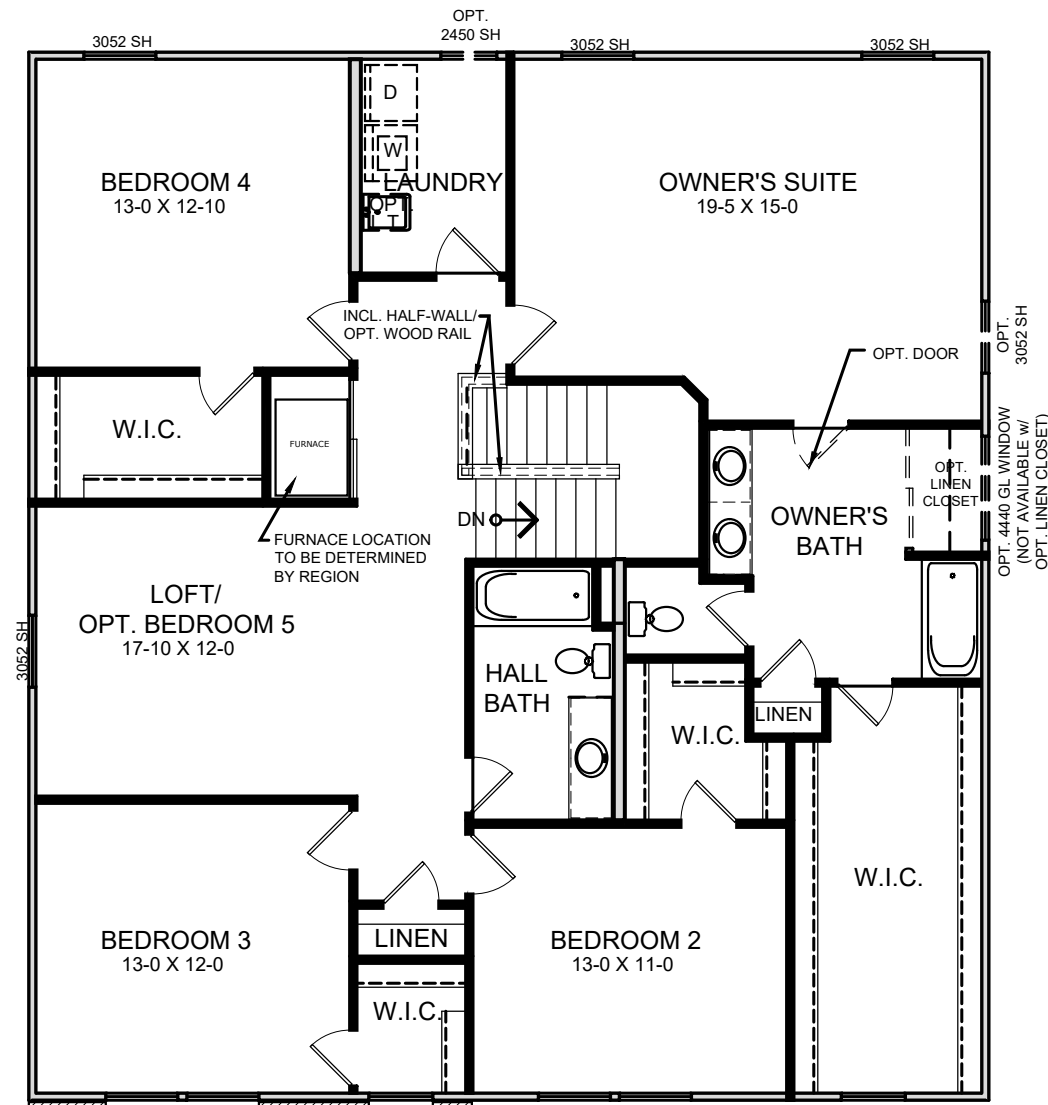
SCALE 1/8" = 1'-0"



TO INCORPORATE NEW AND IMPROVED PRODUCTS,  
FEATURES, AND IDEAS, WE RESERVE THE RIGHT TO  
CHANGE DESIGNS WITHOUT NOTICE. COPYRIGHT © 2023  
FISCHER HOMES, INC. ALL RIGHTS RESERVED.

# BRECKENRIDGE WESTERN CRAFTSMAN

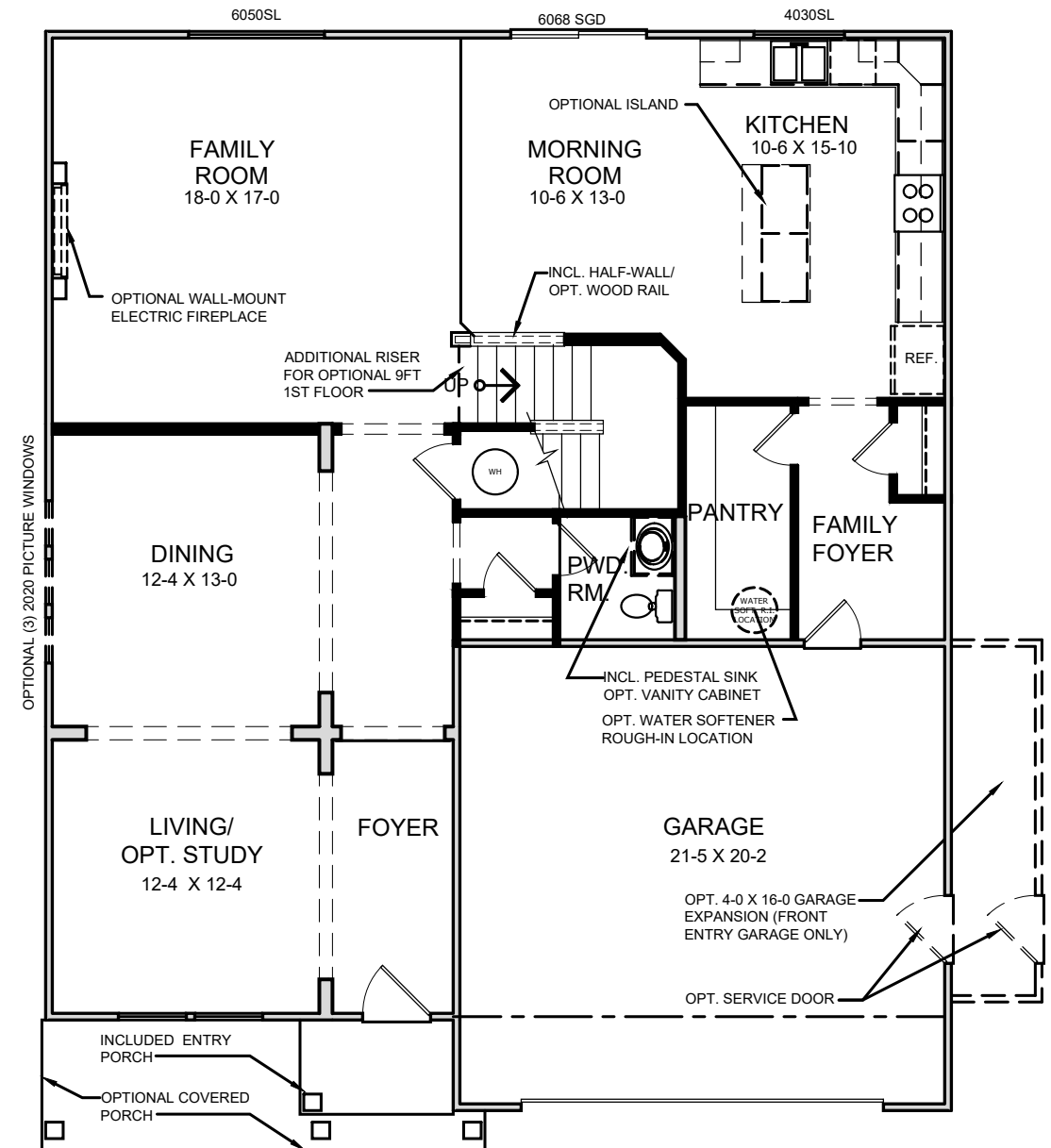
w/ INCL. ENTRY PORCH  
w/ OPT. BRICK VENEER  
(3135 S.F.)



SECOND FLOOR PLAN

SCALE

1/8" = 1'-0"



FIRST FLOOR PLAN

SCALE

1/8" = 1'-0"



TO INCORPORATE NEW AND IMPROVED PRODUCTS,  
FEATURES, AND IDEAS, WE RESERVE THE RIGHT TO  
CHANGE DESIGNS WITHOUT NOTICE. COPYRIGHT © 2023  
FISCHER HOMES, INC. ALL RIGHTS RESERVED.

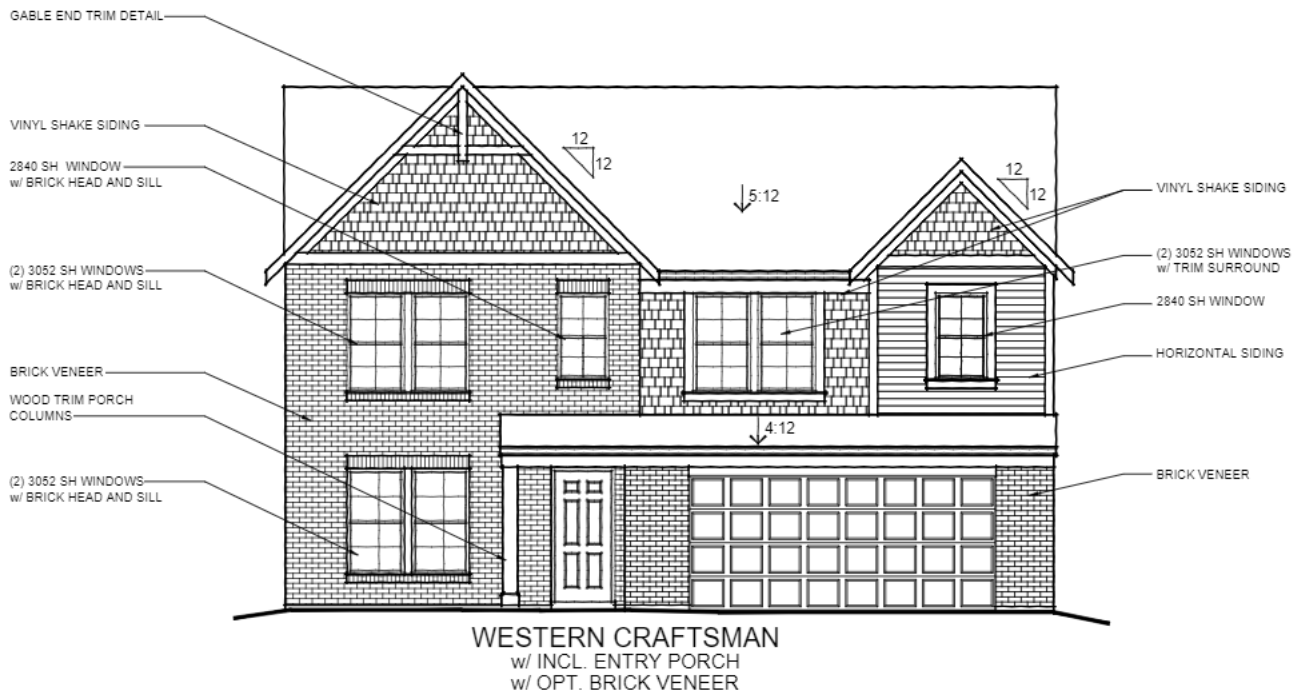
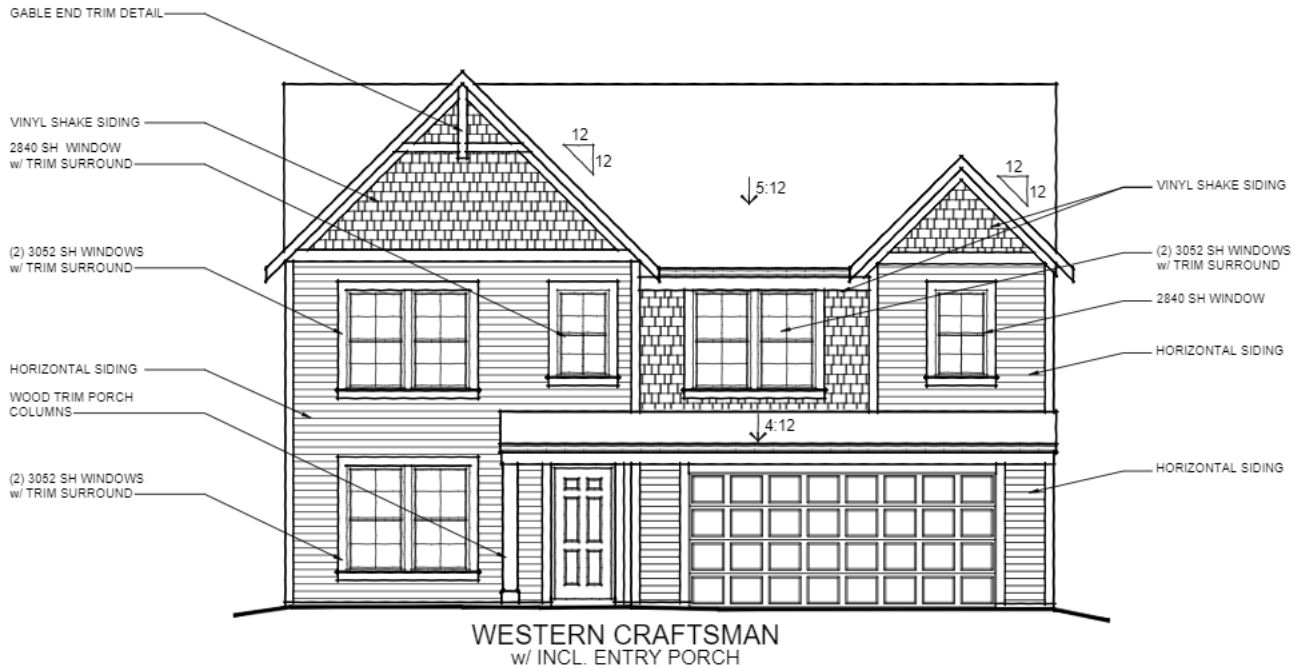
08.07.23

Breckenridge Western Craftsman



# BRECKENRIDGE

40-620  
MAPLE STREET COLLECTION

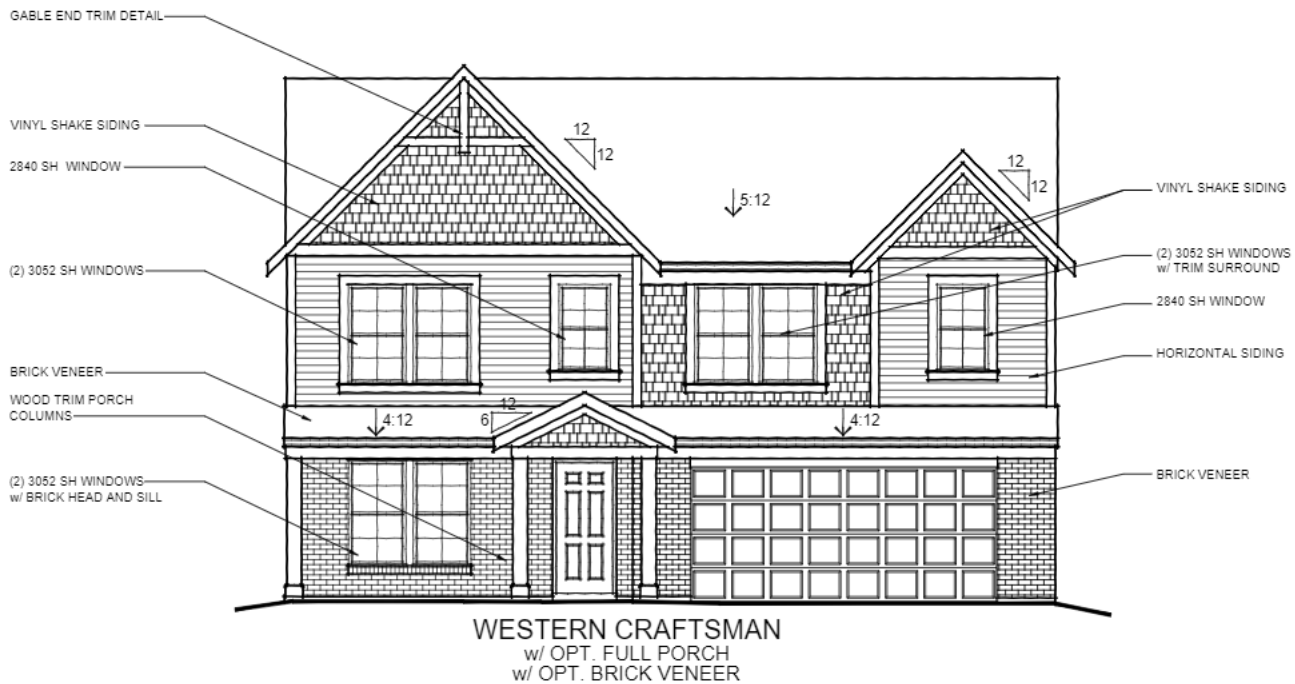
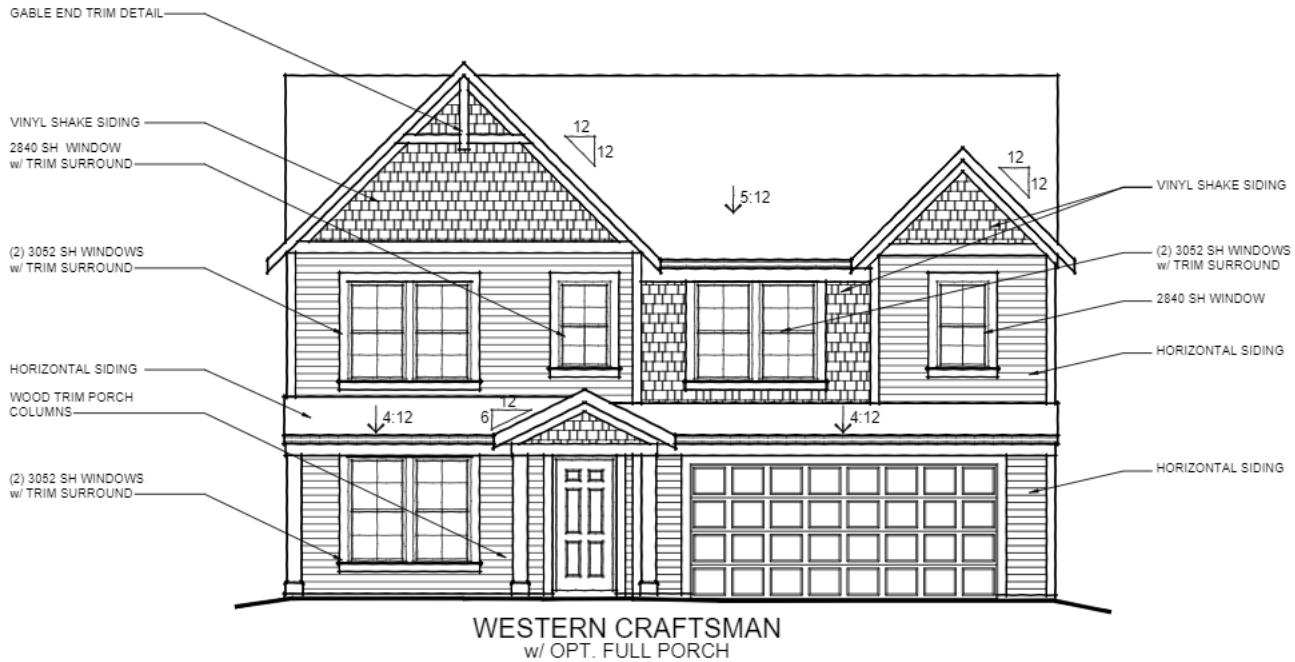


TO INCORPORATE NEW AND IMPROVED PRODUCTS, FEATURES, AND IDEAS, WE RESERVE THE RIGHT TO CHANGE DESIGNS WITHOUT NOTICE. COPYRIGHT © 2021 FISCHER HOMES, INC. ALL RIGHTS RESERVED.

BR-2.1  
05.01.2021

# BRECKENRIDGE

40-620  
MAPLE STREET COLLECTION



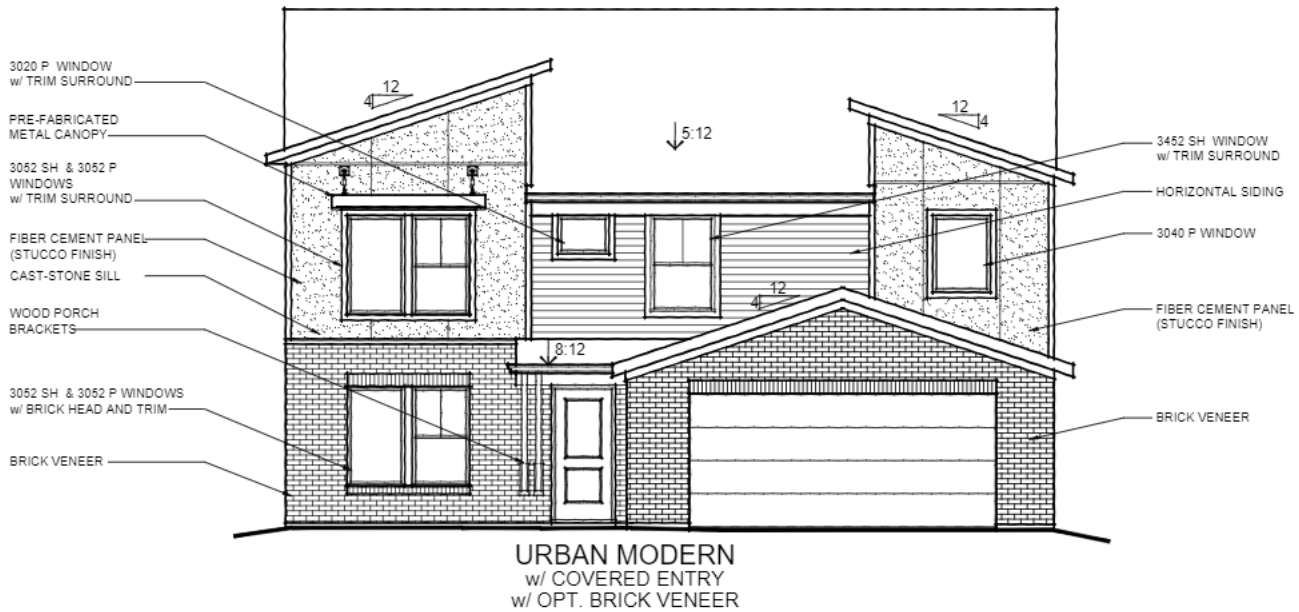
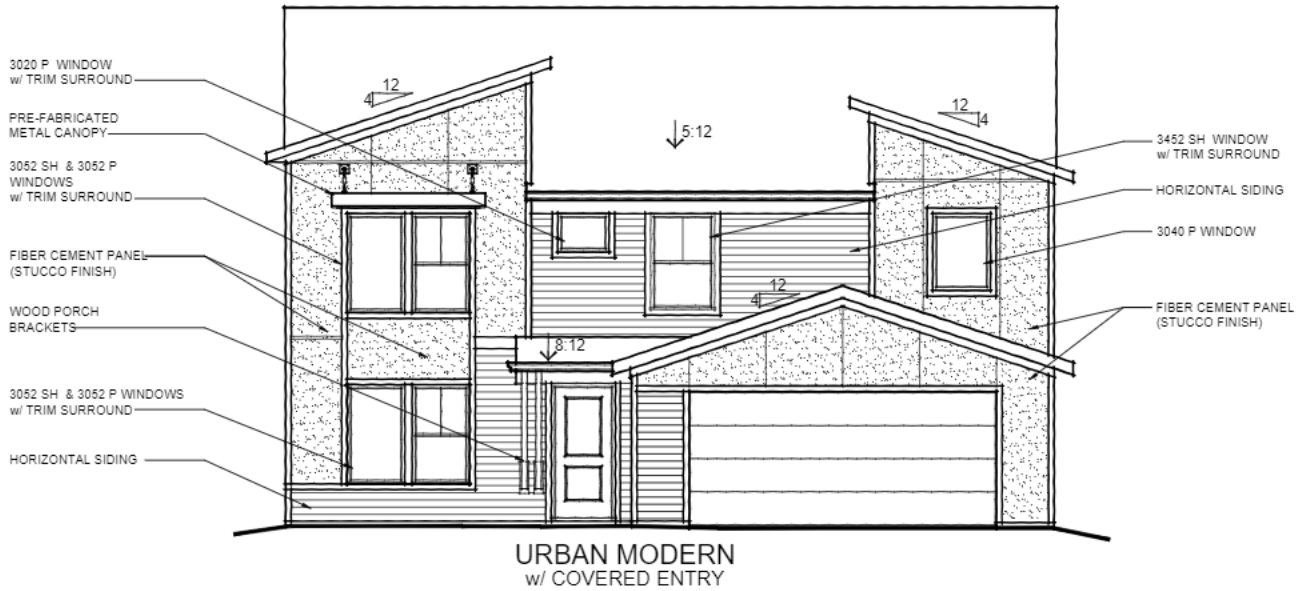


Breckenridge Urban Modern



# BRECKENRIDGE

40-620  
MAPLE STREET COLLECTION



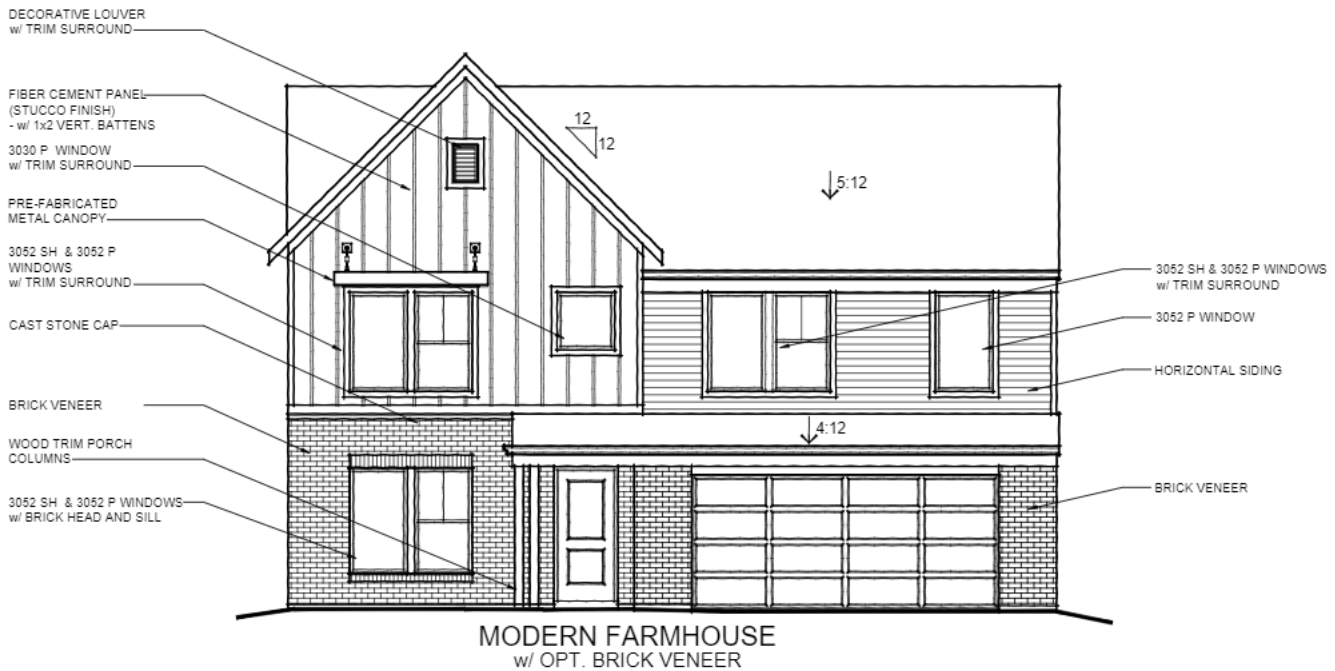
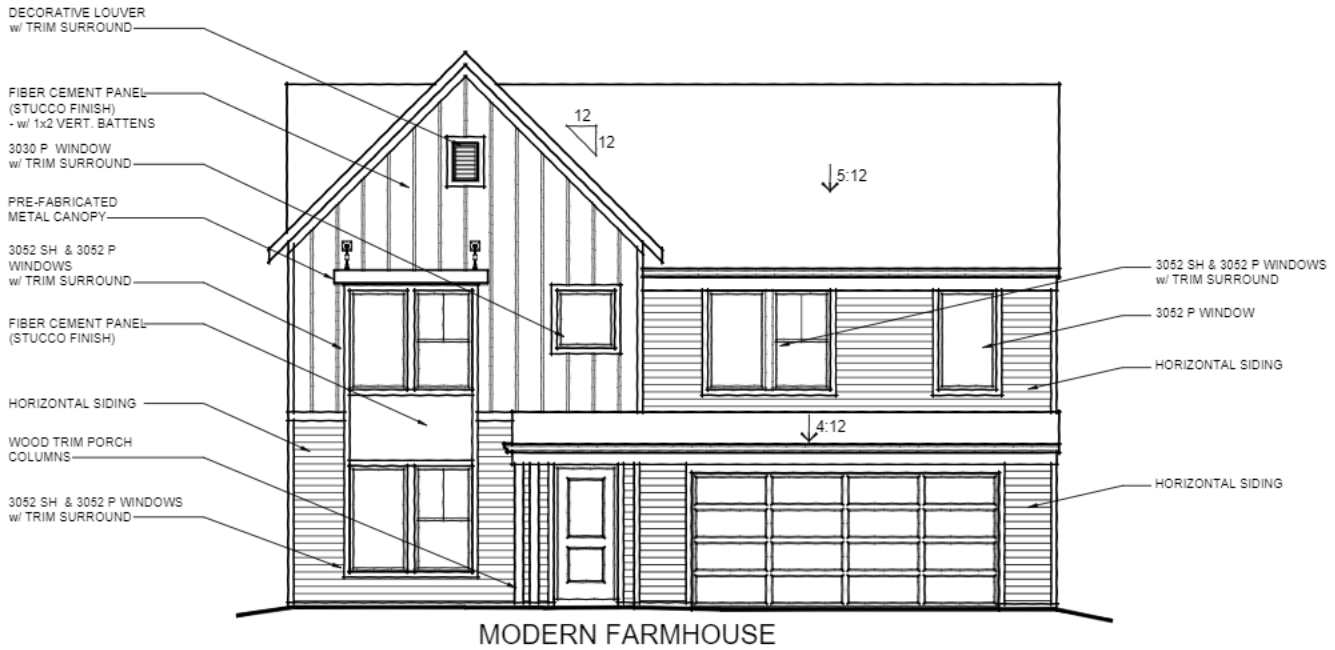
Breckenridge Modern Farmhouse



# BRECKENRIDGE

40-620

MAPLE STREET COLLECTION



TO INCORPORATE NEW AND IMPROVED PRODUCTS, FEATURES, AND IDEAS, WE RESERVE THE RIGHT TO CHANGE DESIGNS WITHOUT NOTICE. COPYRIGHT © 2021 FISCHER HOMES, INC. ALL RIGHTS RESERVED.

BR-2.3  
05.01.2021



Breckenridge Coastal Cottage





# BRECKENRIDGE

40-620  
MAPLE STREET COLLECTION

FIBER CEMENT PANEL  
(STUCCO FINISH)  
- w/ 1x2 VERT. BATTENS

MOULDED URETHANE  
DENTIL BLOCKS

2440 SH WINDOW  
w/ TRIM SURROUND

3052 SH WINDOW  
w/ TRIM SURROUND

HORIZONTAL SIDING

VINYL SHAKE SIDING

WOOD TRIM PORCH  
COLUMNS

2452 / 2852 / 2452 SH WINDOWS  
w/ TRIM SURROUND

HORIZONTAL SIDING

12  
12

5:12

4:12

6

12

6

4:12

3052 SH WINDOW  
w/ TRIM SURROUND

(2) 2020P WINDOWS  
w/ TRIM SURROUND

HORIZONTAL SIDING

FIBER CEMENT PANEL  
(STUCCO FINISH)

HORIZONTAL SIDING

COASTAL CLASSIC

FIBER CEMENT PANEL  
(STUCCO FINISH)  
- w/ 1x2 VERT. BATTENS

MOULDED URETHANE  
DENTIL BLOCKS

2440 SH WINDOW  
w/ TRIM SURROUND

3052 SH WINDOW  
w/ TRIM SURROUND

HORIZONTAL SIDING

VINYL SHAKE SIDING

WOOD TRIM PORCH  
COLUMNS

2452 / 2852 / 2452 SH WINDOWS  
w/ BRICK SILL

BRICK VENEER

12  
12

5:12

4:12

6

12

6

4:12

3052 SH WINDOW  
w/ TRIM SURROUND

(2) 2020P WINDOWS  
w/ TRIM SURROUND

HORIZONTAL SIDING

FIBER CEMENT PANEL  
(STUCCO FINISH)

BRICK VENEER

COASTAL CLASSIC  
w/ OPT. BRICK VENEER



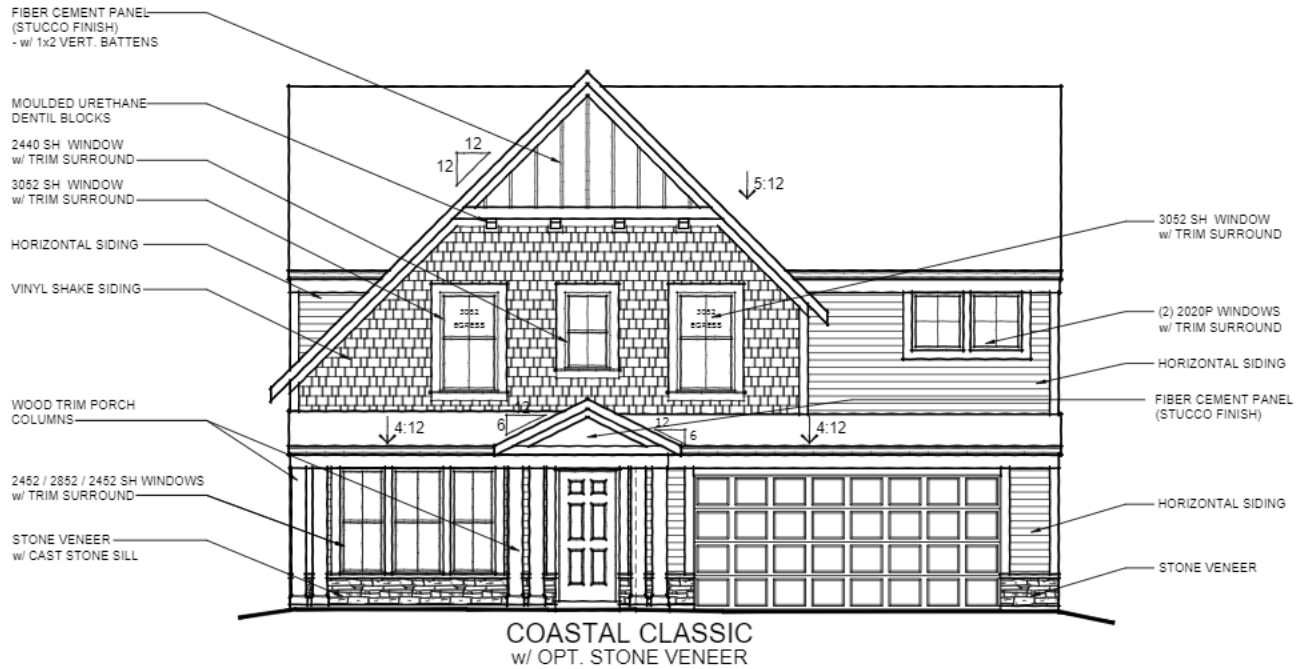
TO INCORPORATE NEW AND IMPROVED PRODUCTS,  
FEATURES, AND IDEAS, WE RESERVE THE RIGHT TO  
CHANGE DESIGNS WITHOUT NOTICE. COPYRIGHT © 2021  
FISCHER HOMES, INC. ALL RIGHTS RESERVED.

BR-2.5  
05.01.2021

# BRECKENRIDGE

40-620

MAPLE STREET COLLECTION



TO INCORPORATE NEW AND IMPROVED PRODUCTS, FEATURES, AND IDEAS, WE RESERVE THE RIGHT TO CHANGE DESIGNS WITHOUT NOTICE. COPYRIGHT © 2021 FISCHER HOMES, INC. ALL RIGHTS RESERVED.

BR-2.6  
05.01.2021