

The Kiawah American Classic with Stone



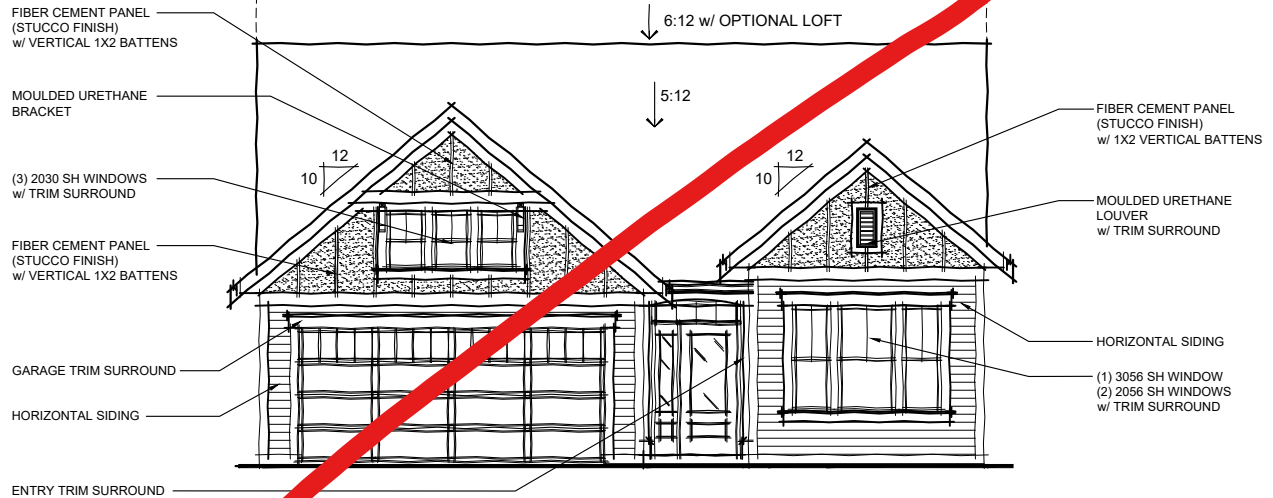
The Kiawah Coastal Cottage with Stone



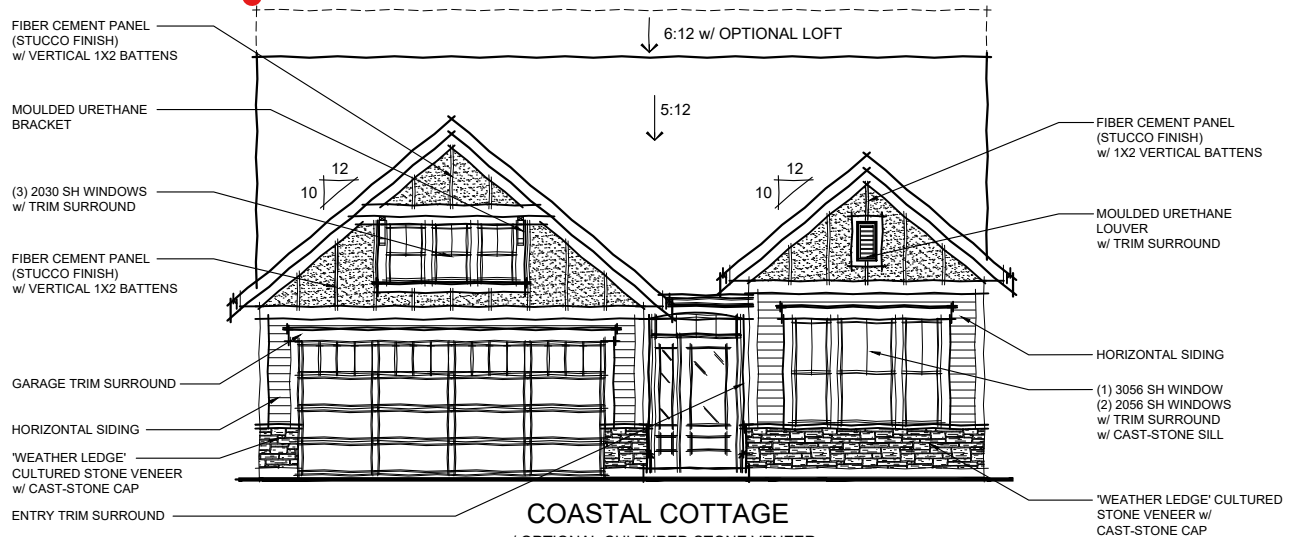
KIAWAH

38-160

PATIO COLLECTION

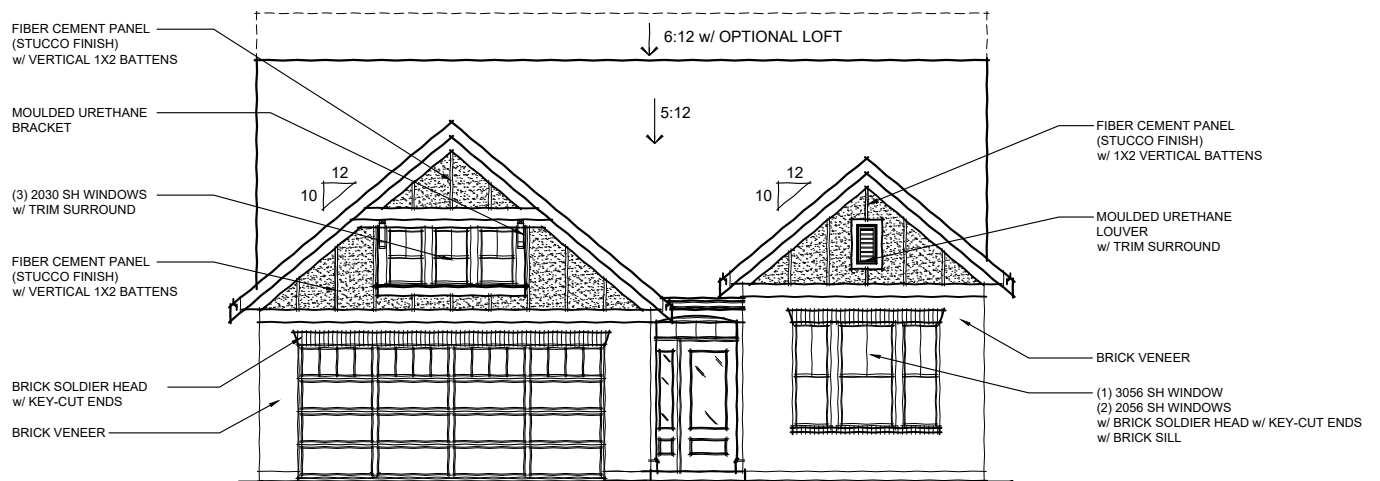


COASTAL COTTAGE



COASTAL COTTAGE

w/ OPTIONAL CULTURED STONE VENEER



COASTAL COTTAGE

w/ OPTIONAL BRICK VENEER



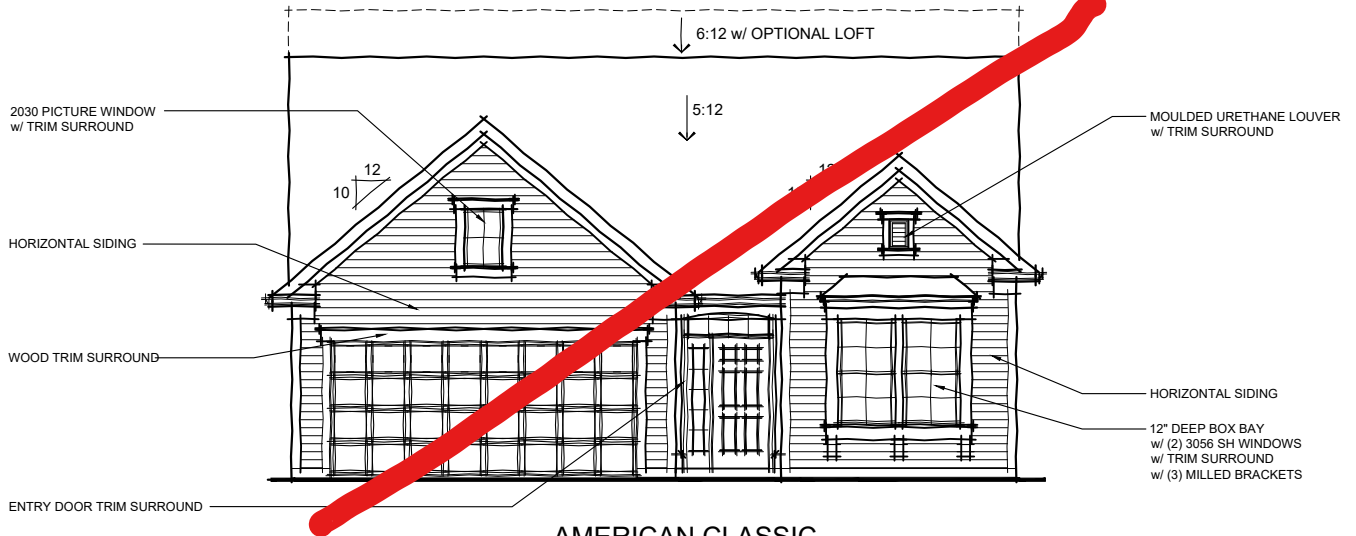
TO INCORPORATE NEW AND IMPROVED PRODUCTS, FEATURES, AND IDEAS, WE RESERVE THE RIGHT TO CHANGE DESIGNS WITHOUT NOTICE. COPYRIGHT © 2015 FISCHER HOMES, INC. ALL RIGHTS RESERVED.

KI-2.2
01.19.2022

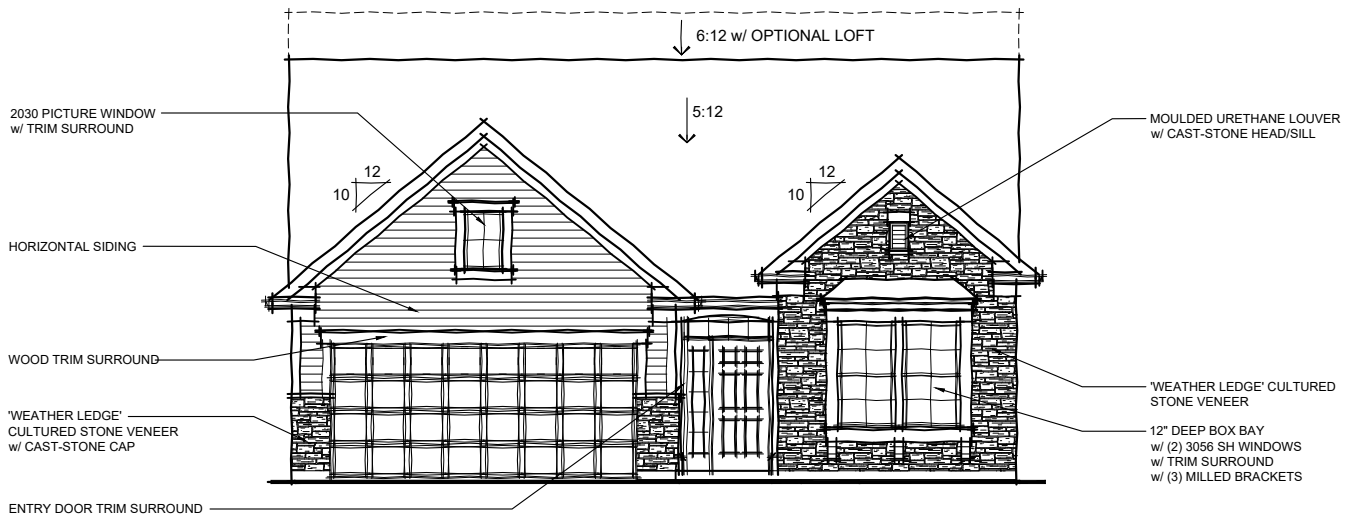
KIAWAH

38-160

PATIO COLLECTION

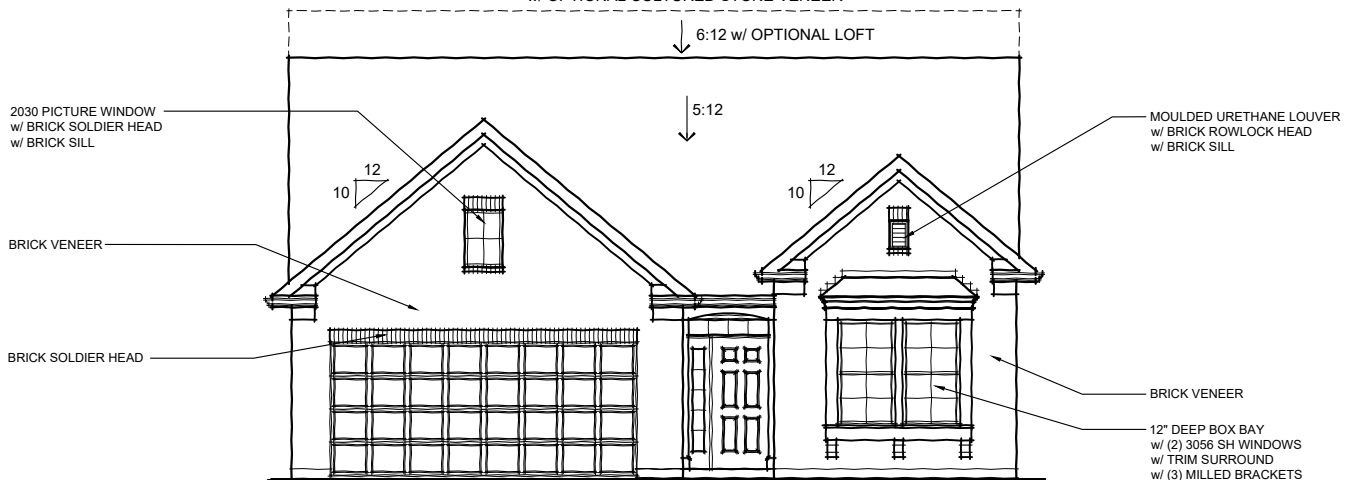


AMERICAN CLASSIC



AMERICAN CLASSIC

w/ OPTIONAL CULTURED STONE VENEER



AMERICAN CLASSIC

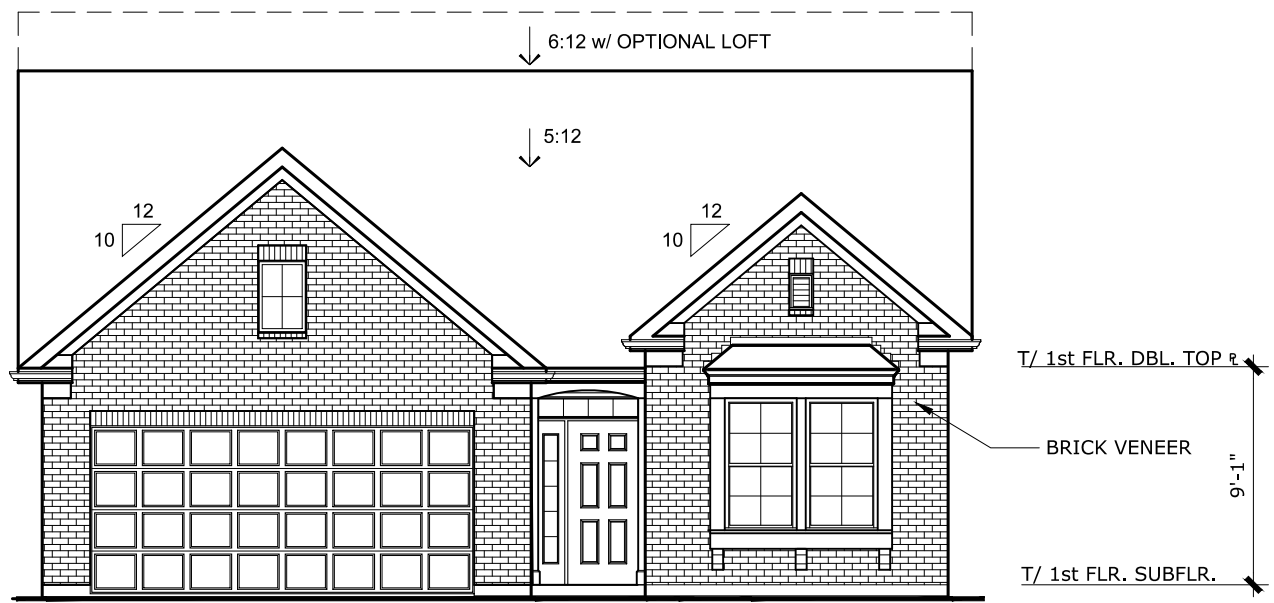
w/ OPTIONAL BRICK VENEER



TO INCORPORATE NEW AND IMPROVED PRODUCTS, FEATURES, AND IDEAS, WE RESERVE THE RIGHT TO CHANGE DESIGNS WITHOUT NOTICE. COPYRIGHT © 2015 FISCHER HOMES, INC. ALL RIGHTS RESERVED.

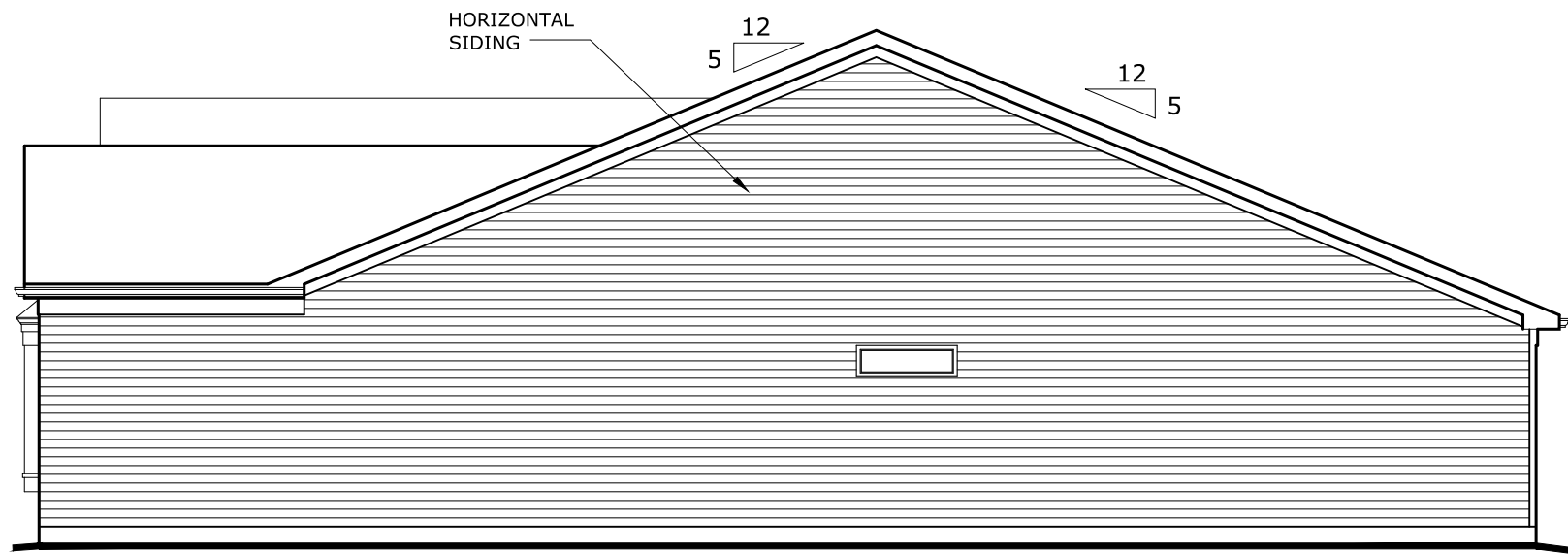
KI-2.1
01.19.2022

KIAWAH
AMERICAN CLASSIC
w/ BRICK



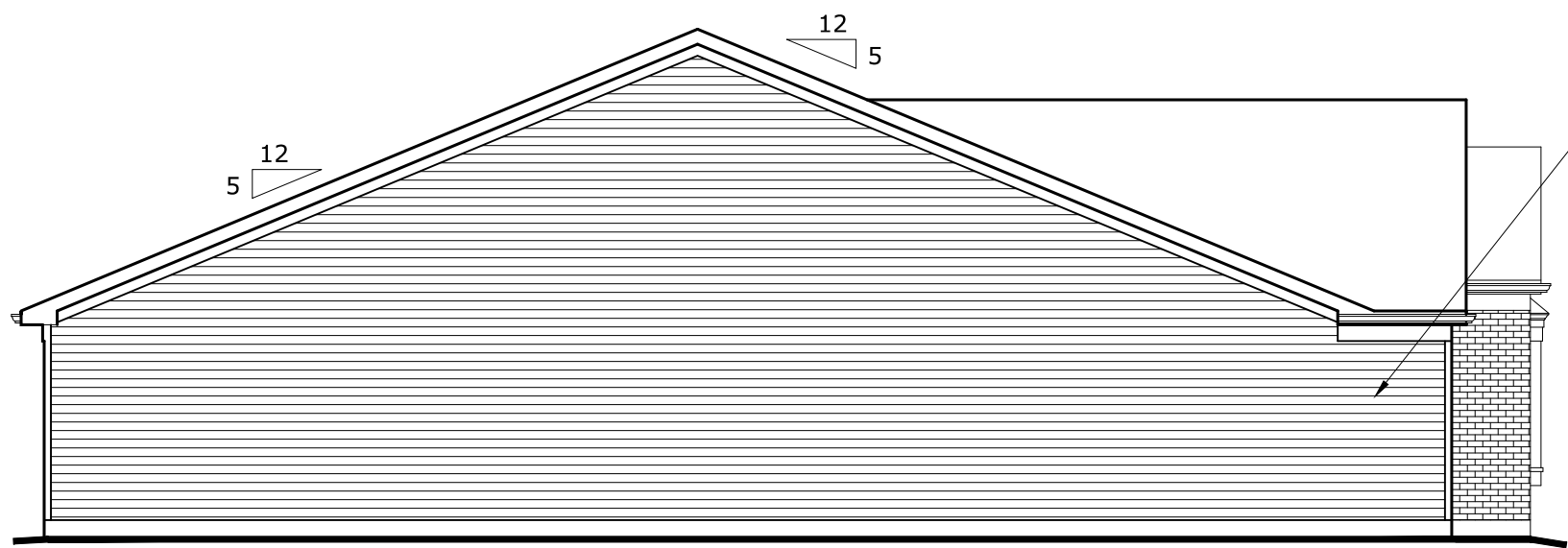
FRONT ELEVATION

SCALE 1/8" = 1'-0"



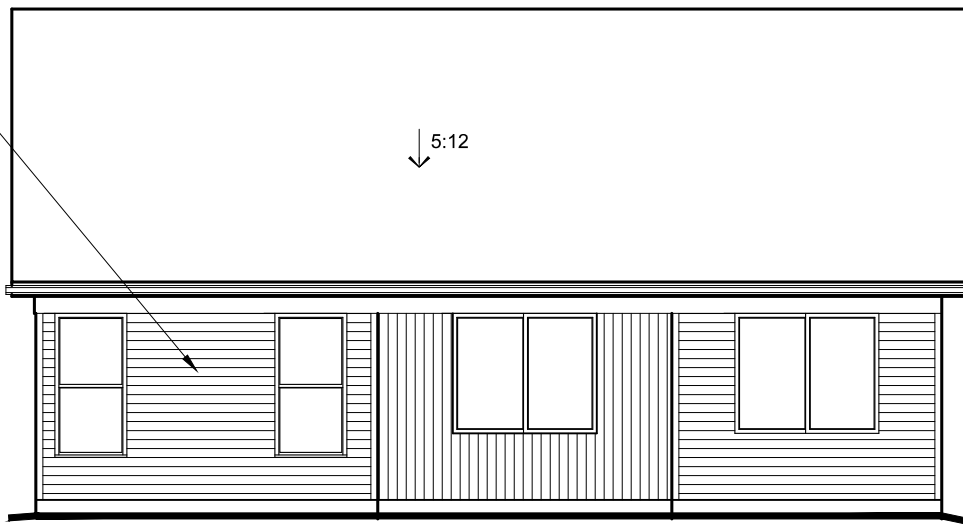
RIGHT SIDE ELEVATION

SCALE 1/8" = 1'-0"



LEFT ELEVATION

SCALE 1/8" = 1'-0"



REAR ELEVATION

SCALE 1/8" = 1'-0"



TO INCORPORATE NEW AND IMPROVED PRODUCTS,
FEATURES, AND IDEAS, WE RESERVE THE RIGHT TO
CHANGE DESIGNS WITHOUT NOTICE. COPYRIGHT © 2020
FISCHER HOMES, INC. ALL RIGHTS RESERVED.



KIAWAH

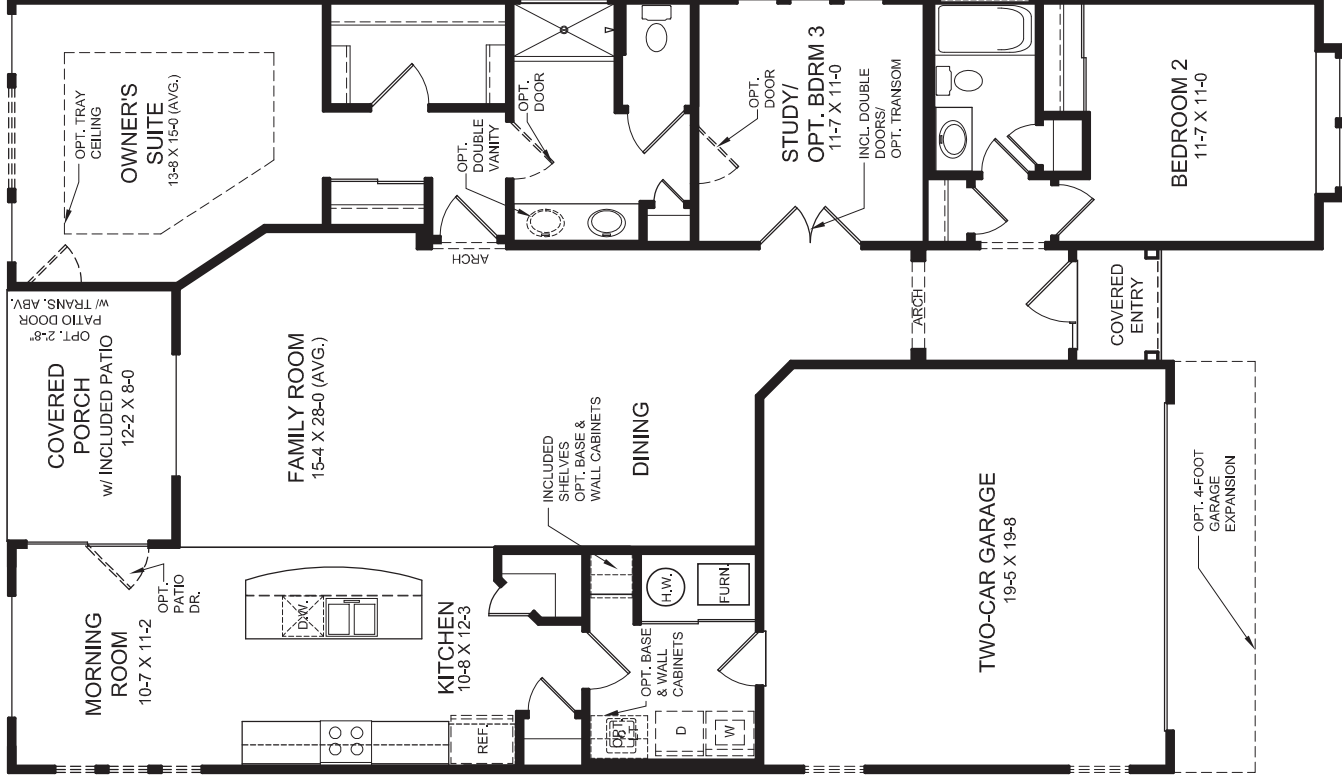
Patio Home Collection

welcome home.

Approximately 1720 sq ft and Up

PLAN FEATURES

- Two Bedroom Home with Included Study/Optional Bedroom #3 Flex Space
- Included 9ft First Floor Ceiling Height
- Included Casual and Formal Dining Spaces
- Open Kitchen Design with Island Seating and Pantry
- Private Owner's Suite with Owner's Bath and Large Walk-In Closet
- Optional Deluxe Shower in Owner's Bath
- Optional Adjoining Study/Bedroom to Owner's Bath
- Included Covered Rear Porch
- Optional Sunroom
- Optional 4ft Garage Expansion
- Optional Loft with Optional Bedroom and Full Bath
- Optional Basement
- Optional Finished Lower Level with Optional Basement



FIRST FLOOR DESIGN
(INCLUDES 9 FT FIRST FLOOR CEILING HEIGHT)



Images & Options Available at fischerhomes.com

Copyright © 2021 Fischer Homes, Inc. "Because we are constantly improving our product, we reserve the right to change features, brand names, dimensions, architectural details and designs. This brochure is for illustrative purposes only and not part of a legal contract. Windows, doors, and ceilings may vary on options and elevations selected. Not all features nor options are shown. Please ask our sales counselor for complete information."

RVSD, 02/21
IM 02/21

Our Plans Include You

The Maxwell Costal Cottage with Stone



The Maxwell American Classic with Brick



The Maxwell American Classic with Stone



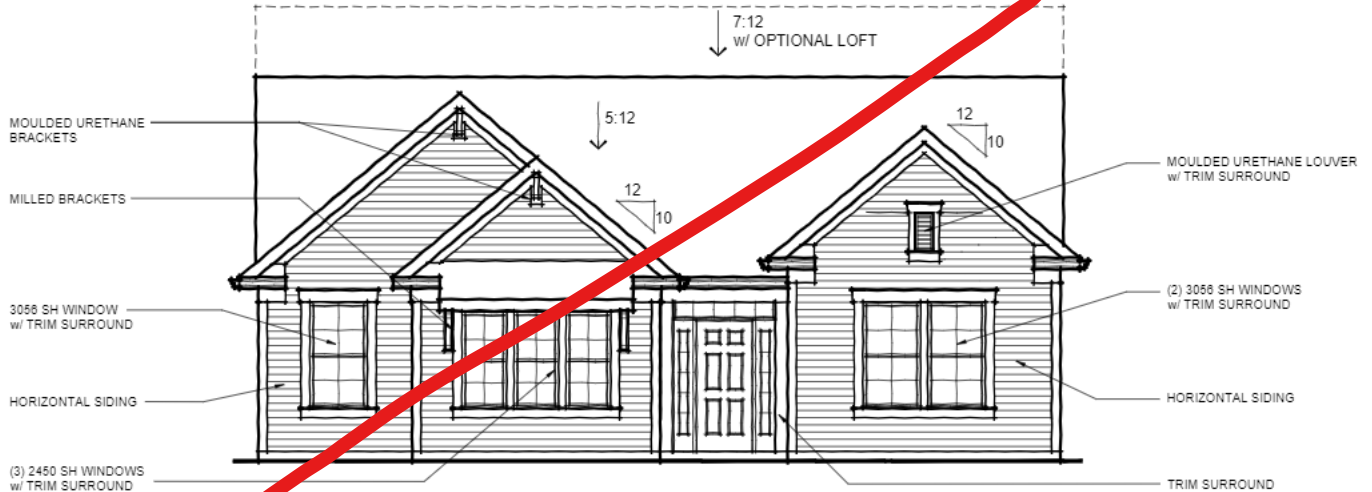
The Maxwell Coastal Cottage with Brick



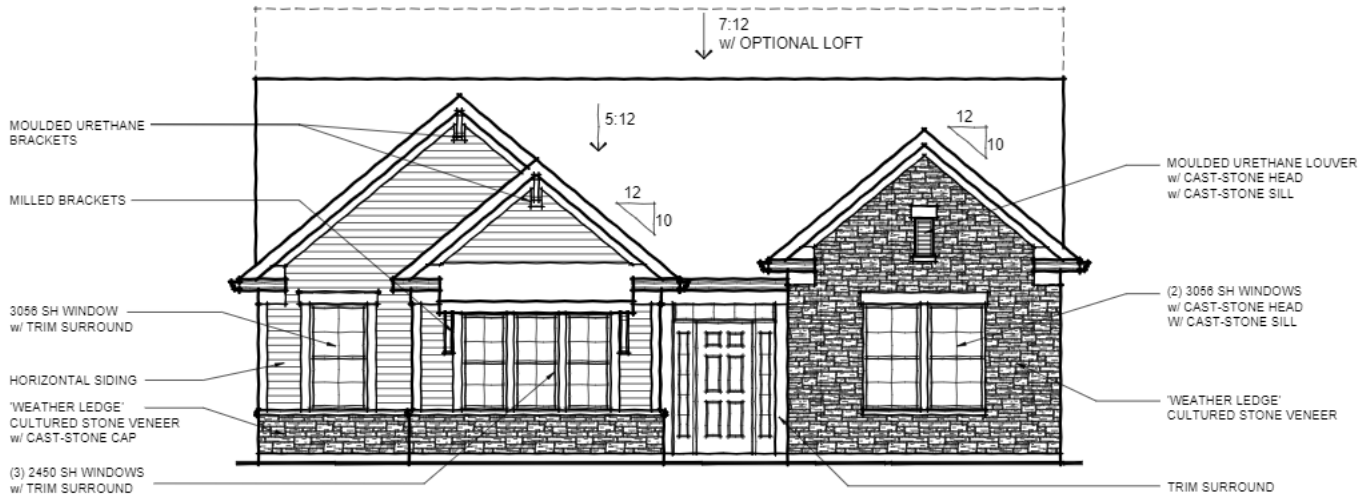
MAXWELL

42-180

PATIO COLLECTION

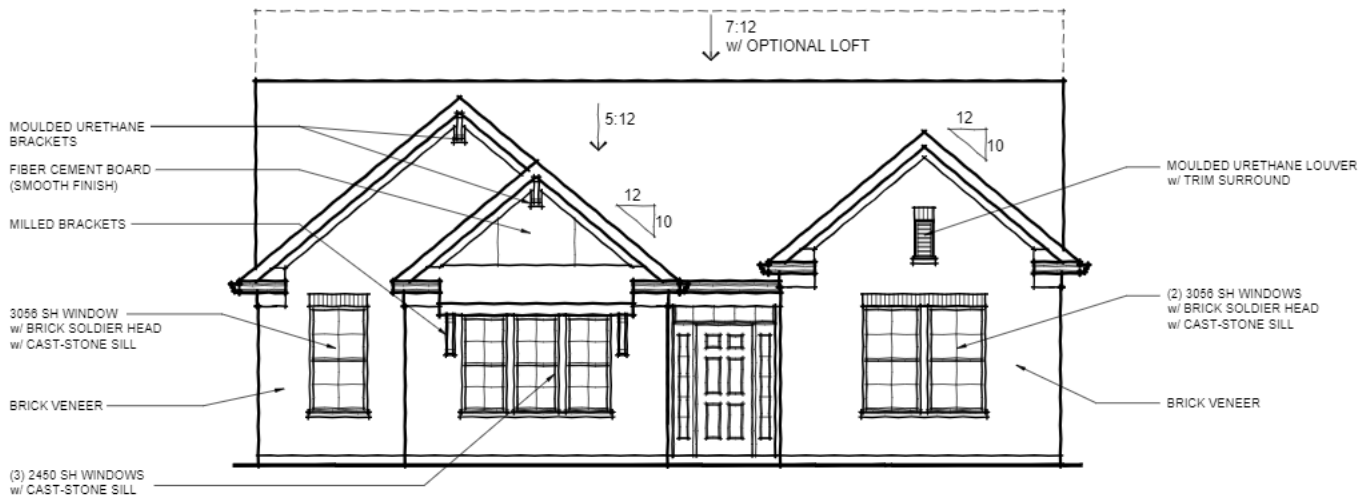


AMERICAN CLASSIC



AMERICAN CLASSIC

w/ OPTIONAL CULTURED STONE VENEER



AMERICAN CLASSIC

w/ OPTIONAL BRICK VENEER



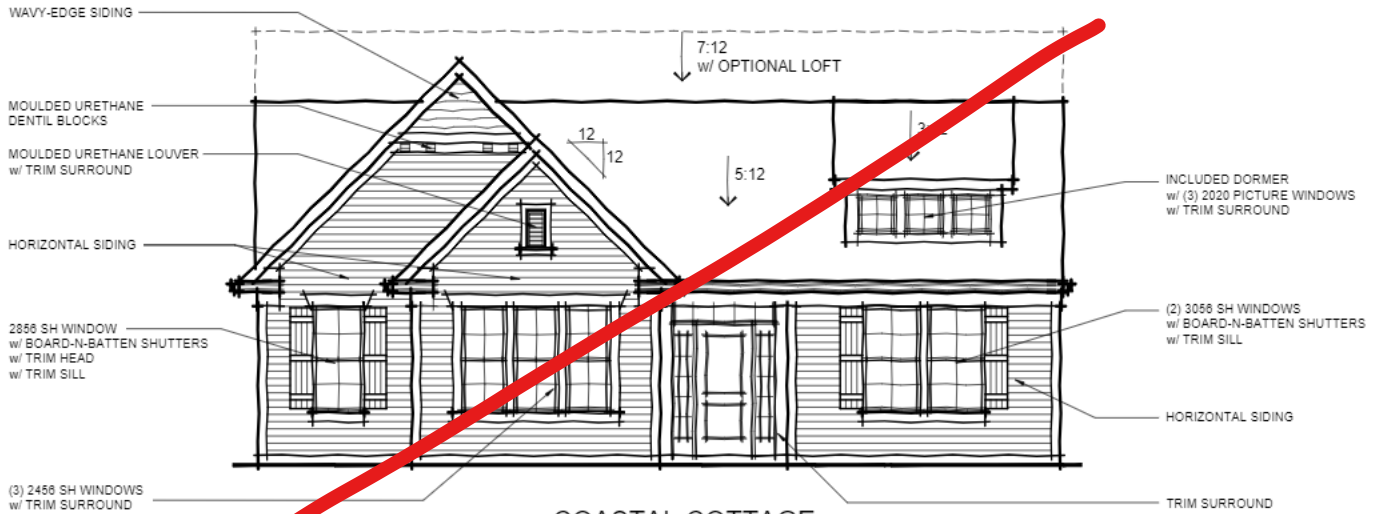
TO INCORPORATE NEW AND IMPROVED PRODUCTS, FEATURES, AND IDEAS, WE RESERVE THE RIGHT TO CHANGE DESIGNS WITHOUT NOTICE. COPYRIGHT © 2015,2016 FISCHER HOMES, INC. ALL RIGHTS RESERVED.

MX-2-1
01.19.2022

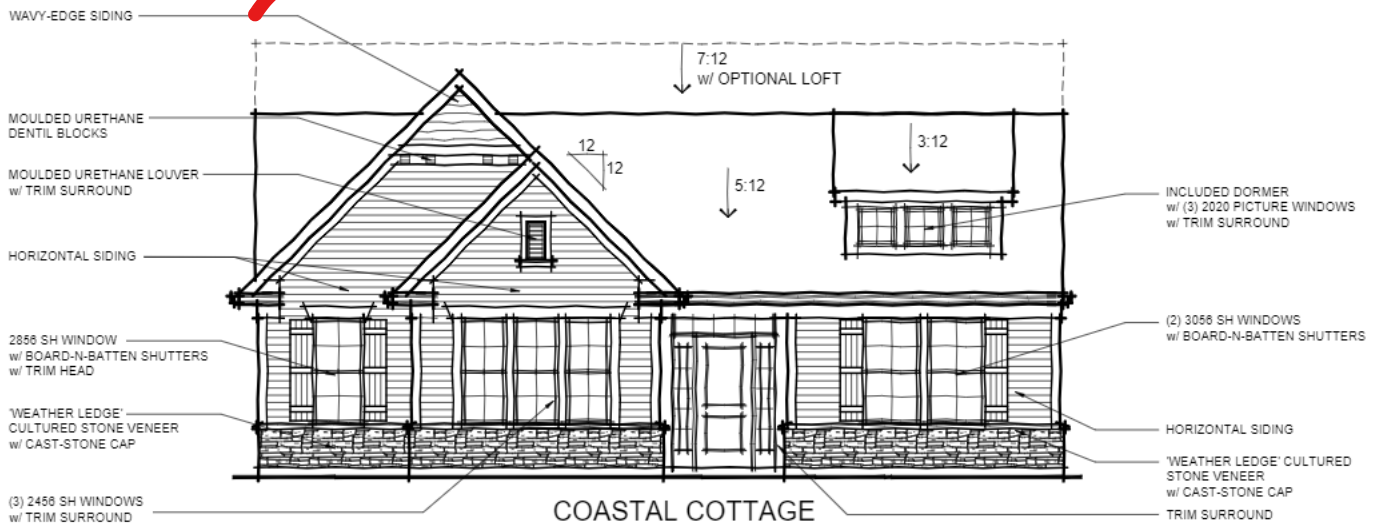
MAXWELL

42-180

PATIO COLLECTION

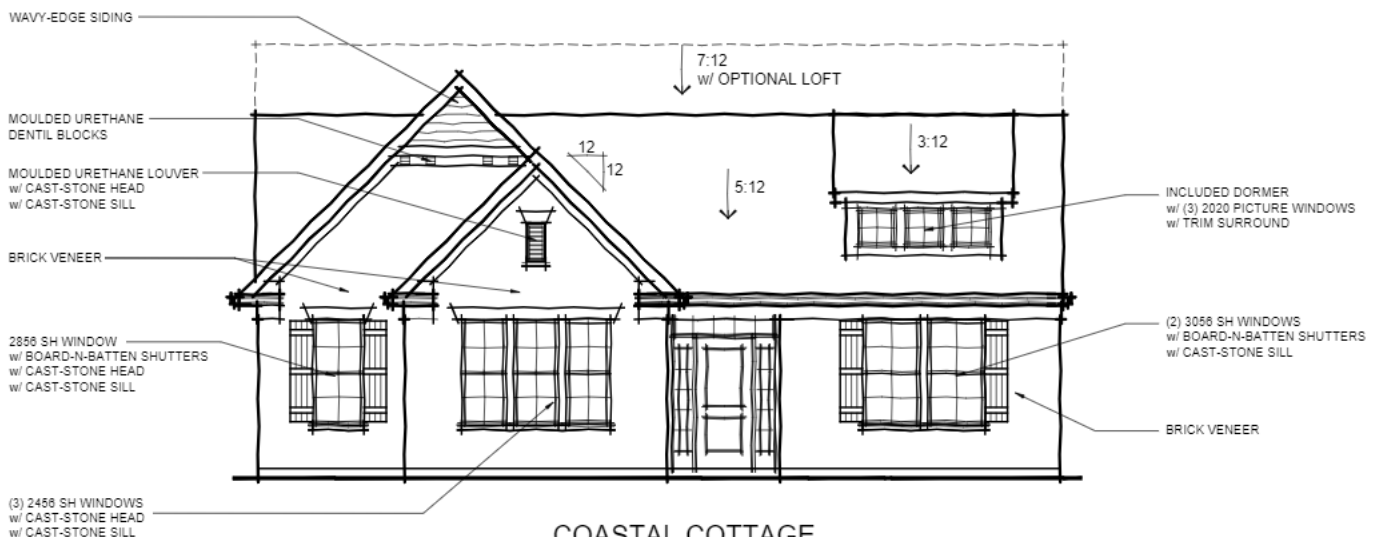


COASTAL COTTAGE



COASTAL COTTAGE

w/ OPTIONAL CULTURED STONE VENEER



COASTAL COTTAGE

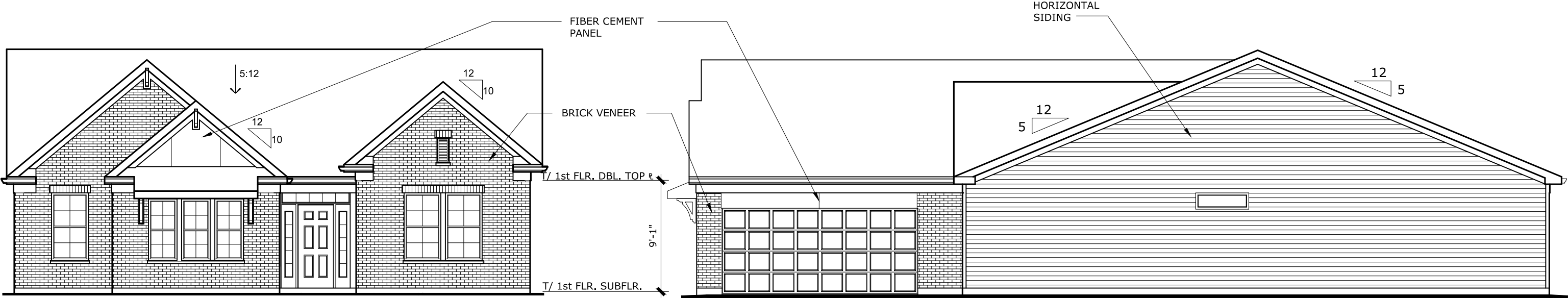
w/ OPTIONAL BRICK VENEER



TO INCORPORATE NEW AND IMPROVED PRODUCTS, FEATURES, AND IDEAS, WE RESERVE THE RIGHT TO CHANGE DESIGNS WITHOUT NOTICE. COPYRIGHT © 2015,2016 FISCHER HOMES, INC. ALL RIGHTS RESERVED.

MX-2-2
01.19.2022

MAXWELL
AMERICAN CLASSIC
w/ BRICK

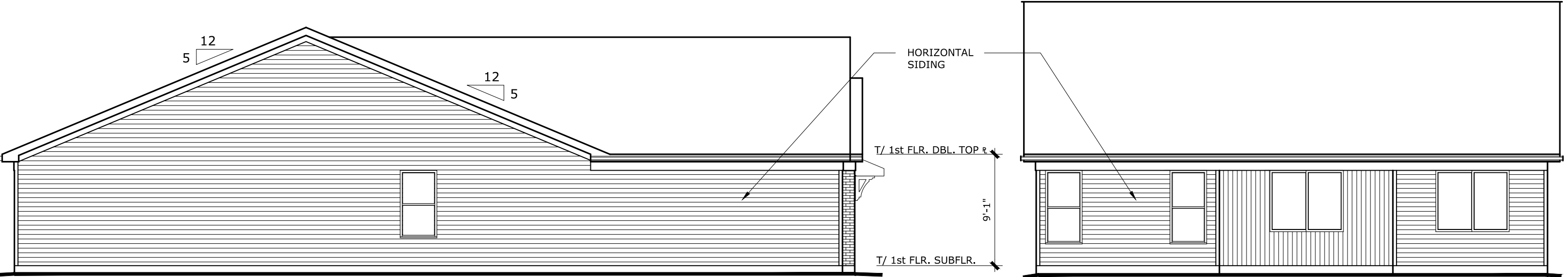


FRONT ELEVATION

SCALE 1/8" = 1'-0"

RIGHT SIDE ELEVATION

SCALE 1/8" = 1'-0"



LEFT ELEVATION

SCALE 1/8" = 1'-0"

REAR ELEVATION

SCALE 1/8" = 1'-0"



TO INCORPORATE NEW AND IMPROVED PRODUCTS,
FEATURES, AND IDEAS, WE RESERVE THE RIGHT TO
CHANGE DESIGNS WITHOUT NOTICE. COPYRIGHT © 2020
FISCHER HOMES, INC. ALL RIGHTS RESERVED.



MAXWELL

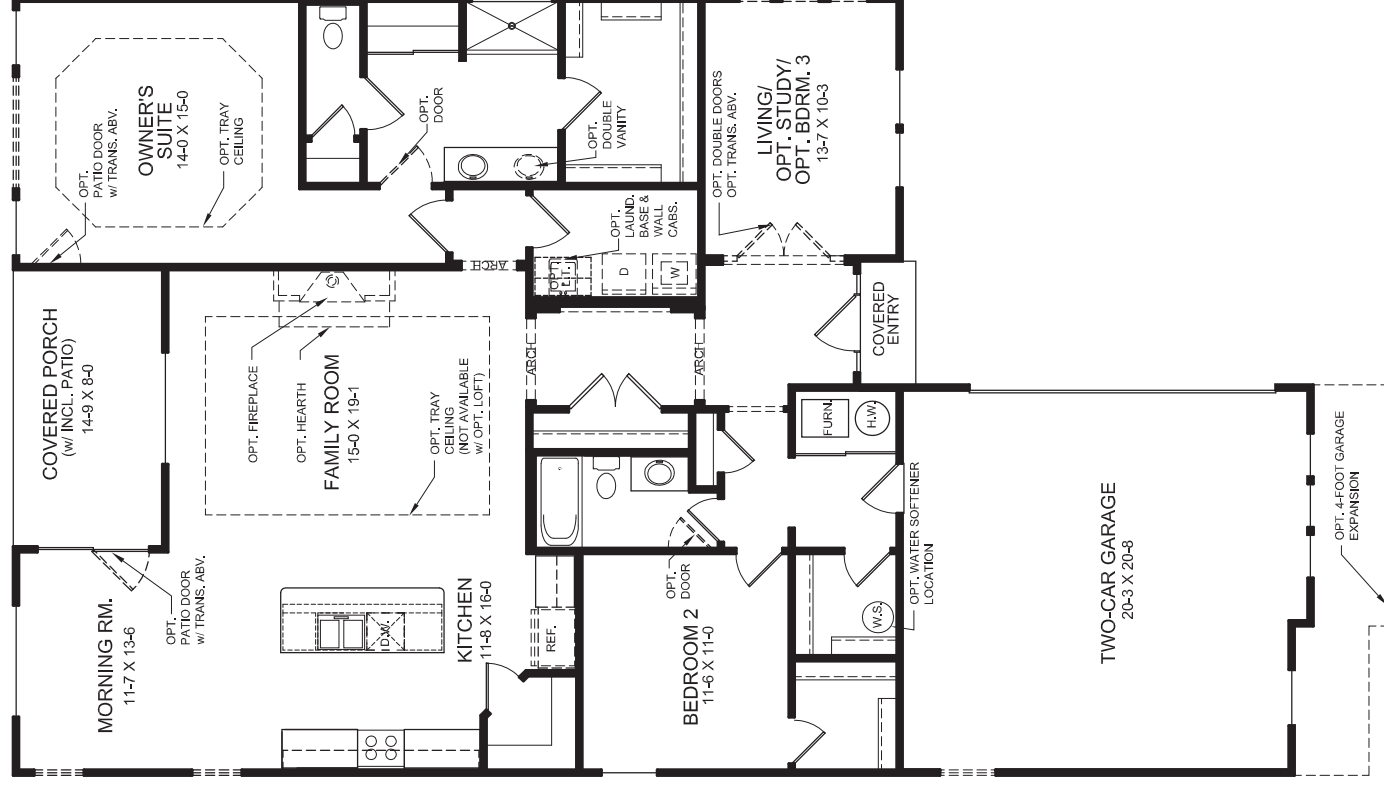
Patio Home Collection

welcome home.

Approximately 1856 sq ft and Up

PLAN FEATURES

- Two Bedroom Home with Living/Optional Study/Optional Bedroom #3 Flex Space
- Included 9ft First Floor Ceiling Height
- Family Foyer with Optional Drop Zone Built-ins
- Open Kitchen Design with Island Seating and Large Corner Pantry
- Alternate Semi-enclosed Kitchen Design
- Optional Built-in Appliance Kitchen
- Spacious Family Room with Optional Tray Ceiling
- Private Owner's Suite with Owner's Bath and Large Walk-In Closet
- Variety of Owner's Bath Design Configurations
- Included Covered Rear Porch
- Optional Sunroom
- Optional 4ft Garage Expansion
- Optional Loft with Optional Bedroom and Full Bath
- Optional Basement
- Optional Finished Lower Level with Optional Basement



FIRST FLOOR DESIGN
(INCLUDES 9 FT FIRST FLOOR CEILING HEIGHT)



Images & Options Available at fischerhomes.com

Copyright © 2021 Fischer Homes, Inc. "Because we are constantly improving our product, we reserve the right to change features, brand names, dimensions, architectural details and designs. This brochure is for illustrative purposes only and not part of a legal contract. Windows, doors, and ceilings may vary on options and elevations selected. Not all features nor options are shown. Please ask our sales counselor for complete information."

RVSD, 02/21
IM 02/21

Our Plans Include You

The Wilmington Coastal Cottage with Stone



The Wilmington American Classic with Stone



WILMINGTON

38-170

PATIO COLLECTION

EXTENDED GABLE PEAK
w/ MOULDED URETHANE BRACKETS

6.5:12
w/ OPTIONAL LOFT

FIBER CEMENT PANEL
(STUCCO FINISH)
- w/ 1x2 VERTICAL BATTENS

1X TRIM BAND

HORIZONTAL SIDING

TRIM SURROUND

5:12

HORIZONTAL SIDING

(2) 3056SH WINDOWS
w/ TRIM SURROUND

MILLED PORCH COLUMN

AMERICAN CLASSIC

TRIM SURROUND

EXTENDED GABLE PEAK
w/ MOULDED URETHANE BRACKETS

6.5:12
w/ OPTIONAL LOFT

FIBER CEMENT PANEL
(STUCCO FINISH)
- w/ 1x2 VERTICAL BATTENS

1X TRIM BAND

HORIZONTAL SIDING

TRIM SURROUND

5:12

HORIZONTAL SIDING

(2) 3056SH WINDOWS
w/ TRIM SURROUND

MILLED PORCH COLUMN

'WEATHER LEDGE' CULTURED
STONE VENEER
-w/ CAST STONE SILL

AMERICAN CLASSIC

SHOWN WITH OPT. CULTURED STONE VENEER

TRIM SURROUND

EXTENDED GABLE PEAK
w/ MOULDED URETHANE BRACKETS

6.5:12
w/ OPTIONAL LOFT

FIBER CEMENT PANEL
(STUCCO FINISH)
- w/ 1x2 VERTICAL BATTENS

1X TRIM BAND

BRICK SOLDIER
w/ KEY-CUT ENDS

BRICK VENEER

5:12

BRICK VENEER

(2) 3056SH WINDOWS
w/ BRICK SILL

MILLED PORCH COLUMN

AMERICAN CLASSIC

SHOWN WITH OPT. BRICK VENEER



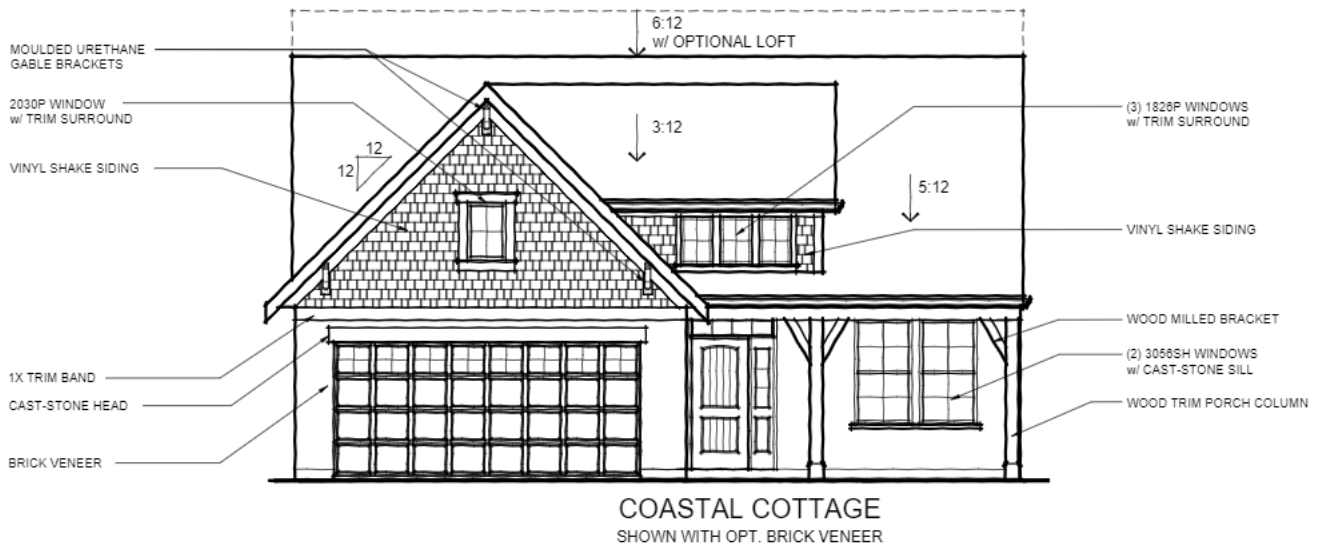
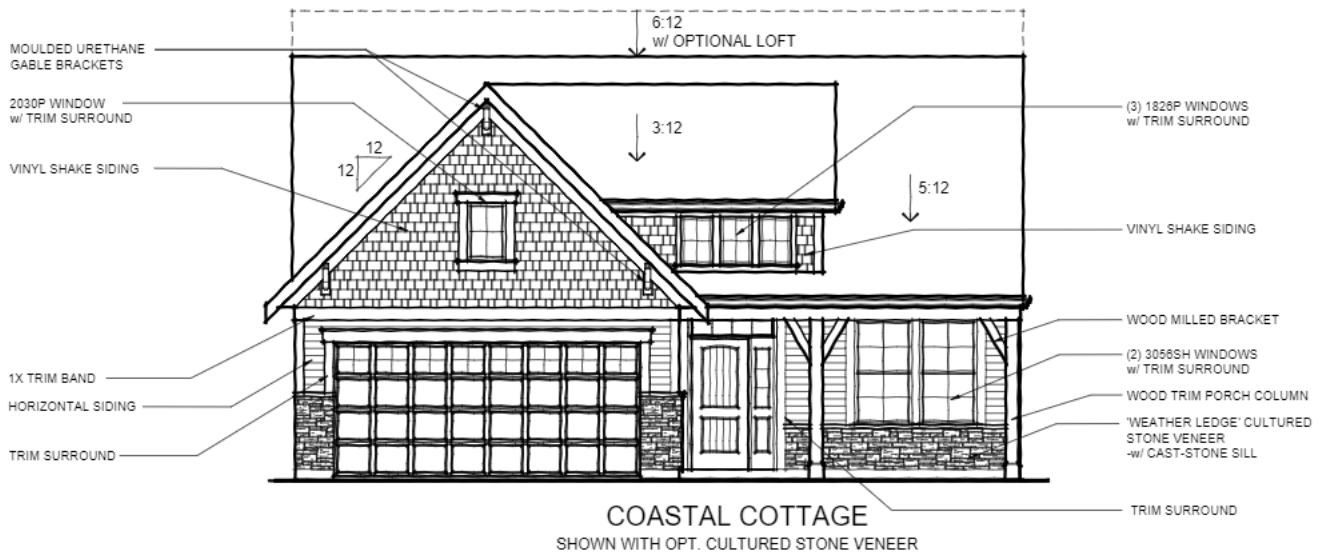
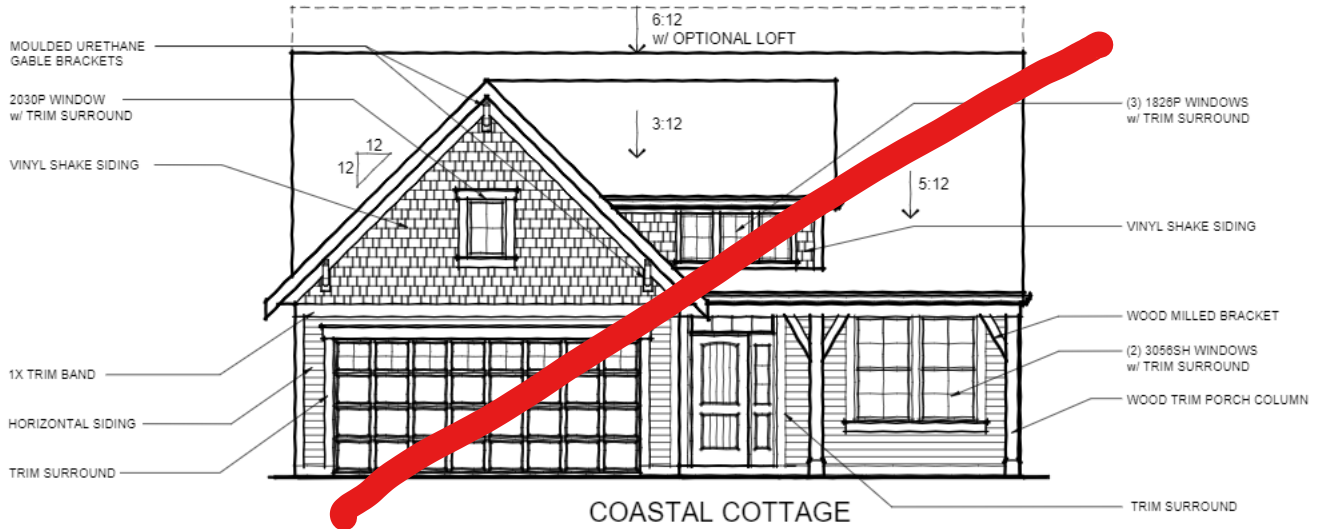
TO INCORPORATE NEW AND IMPROVED PRODUCTS,
FEATURES, AND IDEAS, WE RESERVE THE RIGHT TO
CHANGE DESIGNS WITHOUT NOTICE. COPYRIGHT © 2015
FISCHER HOMES, INC. ALL RIGHTS RESERVED.

WL-2-1
04.11.2022

WILMINGTON

38-170

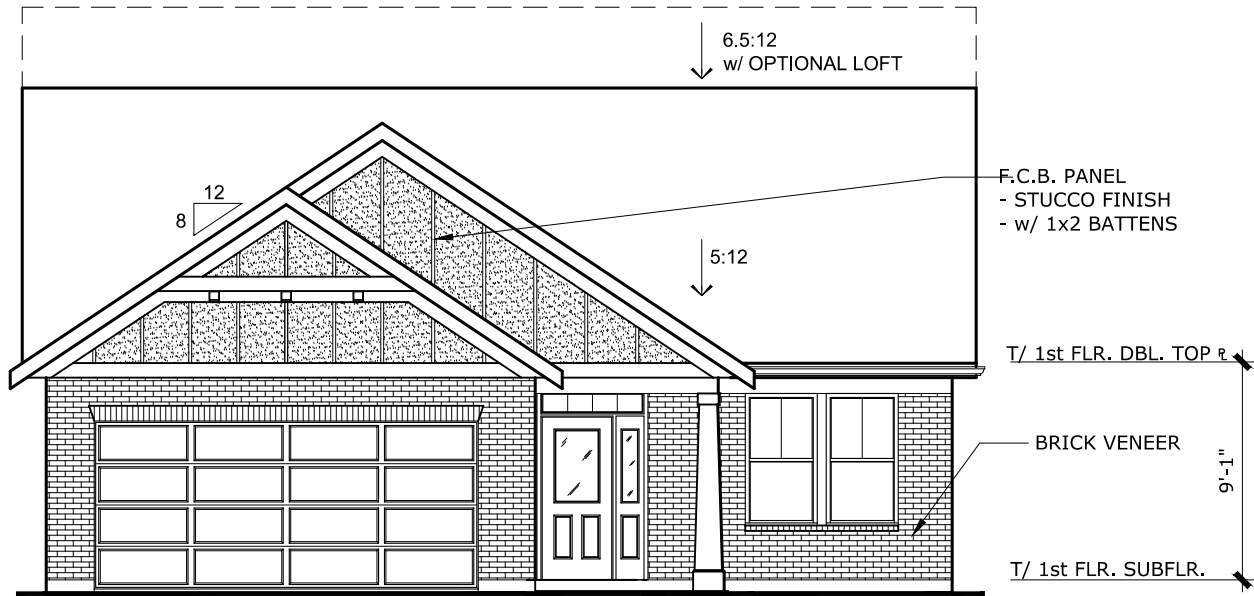
PATIO COLLECTION



TO INCORPORATE NEW AND IMPROVED PRODUCTS, FEATURES, AND IDEAS, WE RESERVE THE RIGHT TO CHANGE DESIGNS WITHOUT NOTICE. COPYRIGHT © 2015 FISCHER HOMES, INC. ALL RIGHTS RESERVED.

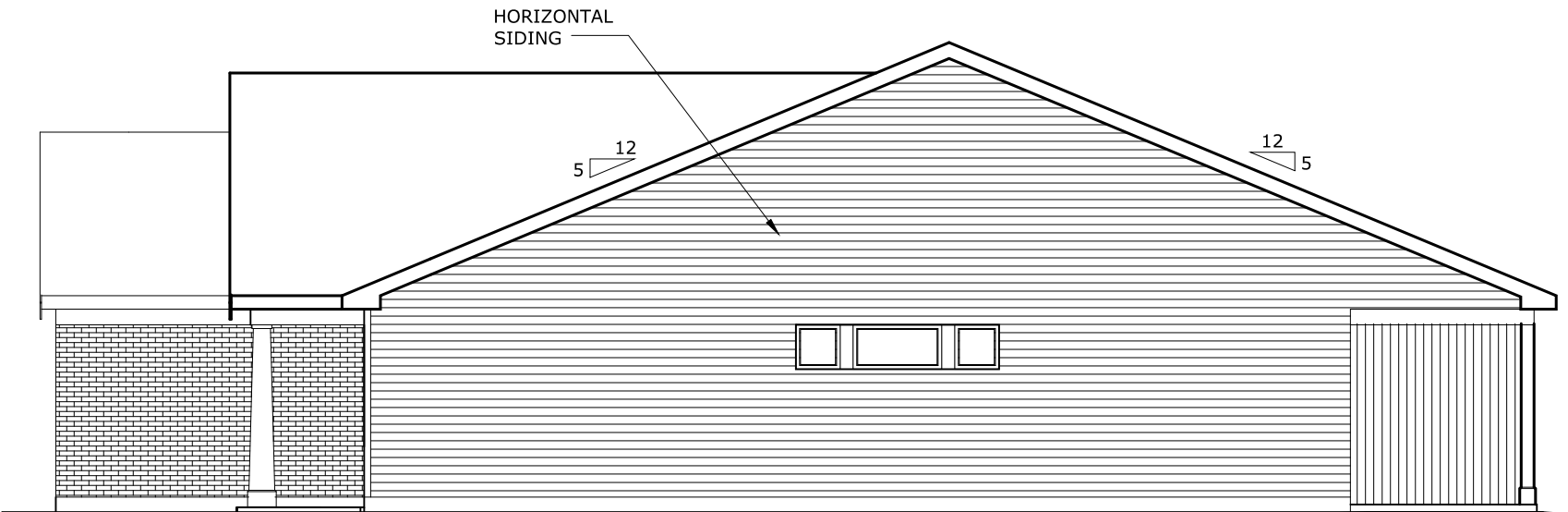
WL-2-2
04.11.2022

WILMINGTON
AMERICAN CLASSIC
w/ BRICK



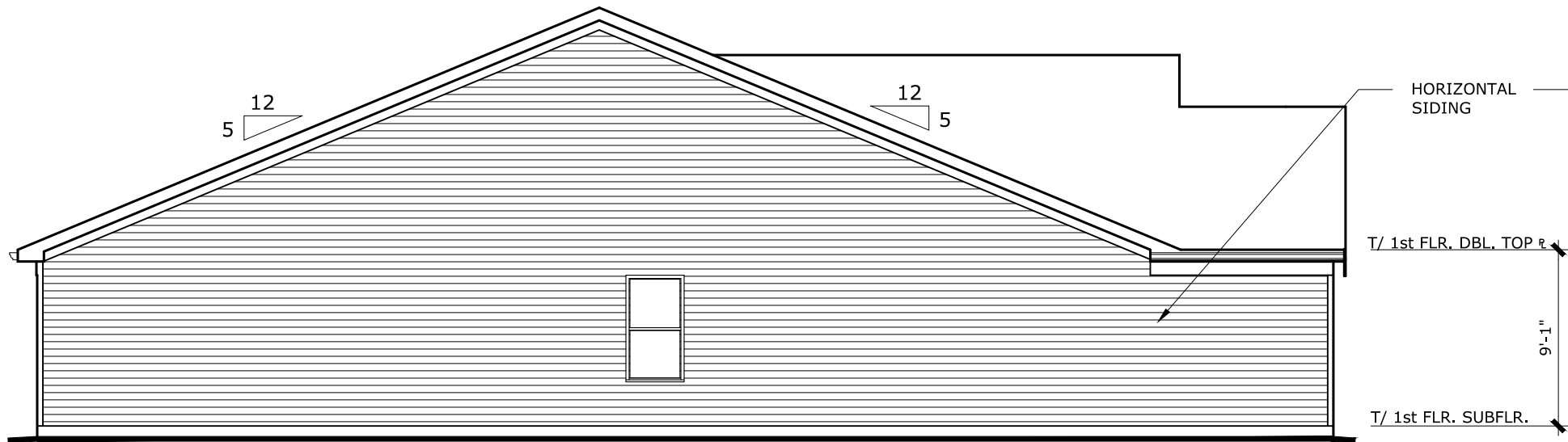
FRONT ELEVATION

SCALE 1/8" = 1'-0"



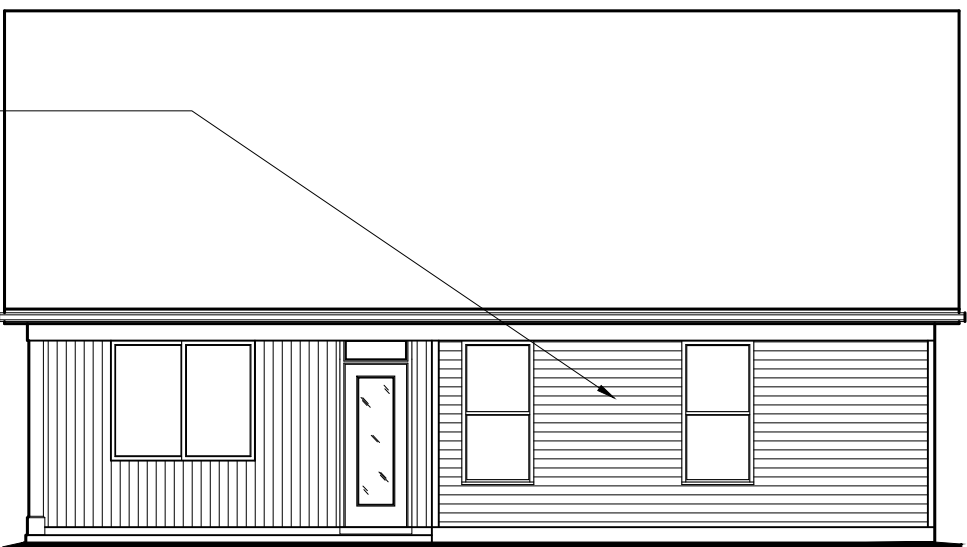
RIGHT SIDE ELEVATION

SCALE 1/8" = 1'-0"



LEFT ELEVATION

SCALE 1/8" = 1'-0"



REAR ELEVATION

SCALE 1/8" = 1'-0"



TO INCORPORATE NEW AND IMPROVED PRODUCTS,
FEATURES, AND IDEAS, WE RESERVE THE RIGHT TO
CHANGE DESIGNS WITHOUT NOTICE. COPYRIGHT © 2020
FISCHER HOMES, INC. ALL RIGHTS RESERVED.



WILMINGTON

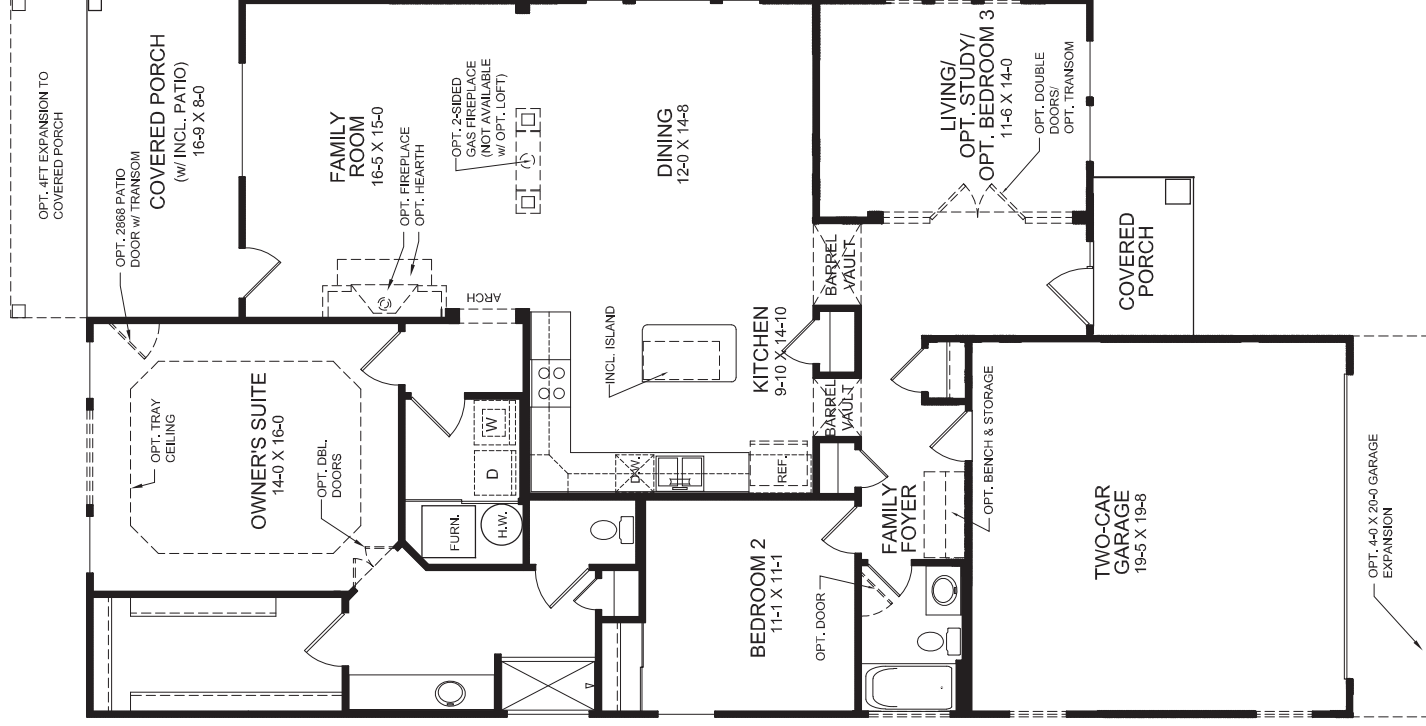
Patio Home Collection

welcome home.

Approximately 1725 sq ft and Up

PLAN FEATURES

- Two Bedroom Home with Living/Optional Study/Optional Bedroom #3 Flex Space
- Included 9ft First Floor Ceiling Height
- Family Foyer with Optional Drop Zone Built-ins
- Open Plan Design with Spacious Dining and Family Room Spaces
- Private Owner's Suite with Owner's Bath and Large Walk-In Closet
- Optional Deluxe Shower in Owner's Bath
- Optional Adjoining Bedroom to Owner's Bath
- Included Covered Rear Porch
- Optional Sunroom
- Optional 4ft Garage Expansion
- Optional Loft with Optional Bedroom and Full Bath
- Optional Basement
- Optional Finished Lower Level with Optional Basement



FIRST FLOOR DESIGN
(INCLUDES 9 FT FIRST FLOOR CEILING HEIGHT)



Images & Options Available at fischerhomes.com

Copyright © 2021 Fischer Homes, Inc. "Because we are constantly improving our product, we reserve the right to change features, brand names, dimensions, architectural details and designs. This brochure is for illustrative purposes only and not part of a legal contract. Windows, doors, and ceilings may vary on options and elevations selected. Not all features nor options are shown. Please ask our sales counselor for complete information."

RVSD, 03/21
IM 03/21

Our Plans Include You

The Winthrop American Classic with Brick



The Winthrop American Classic with Stone



The Winthrop Coastal Cottage with Brick



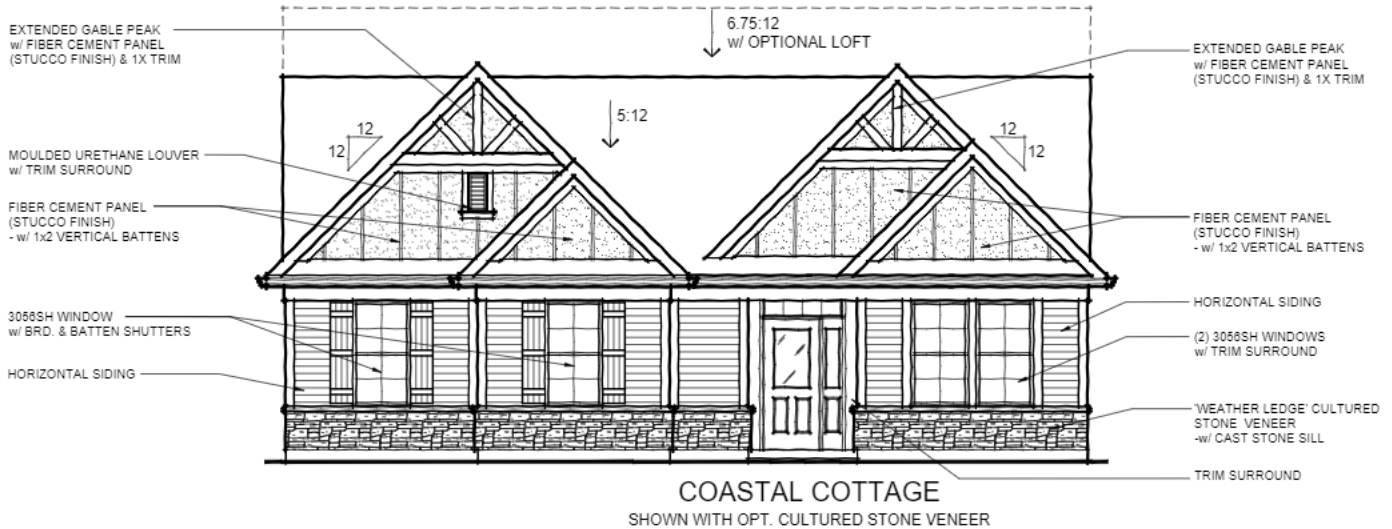
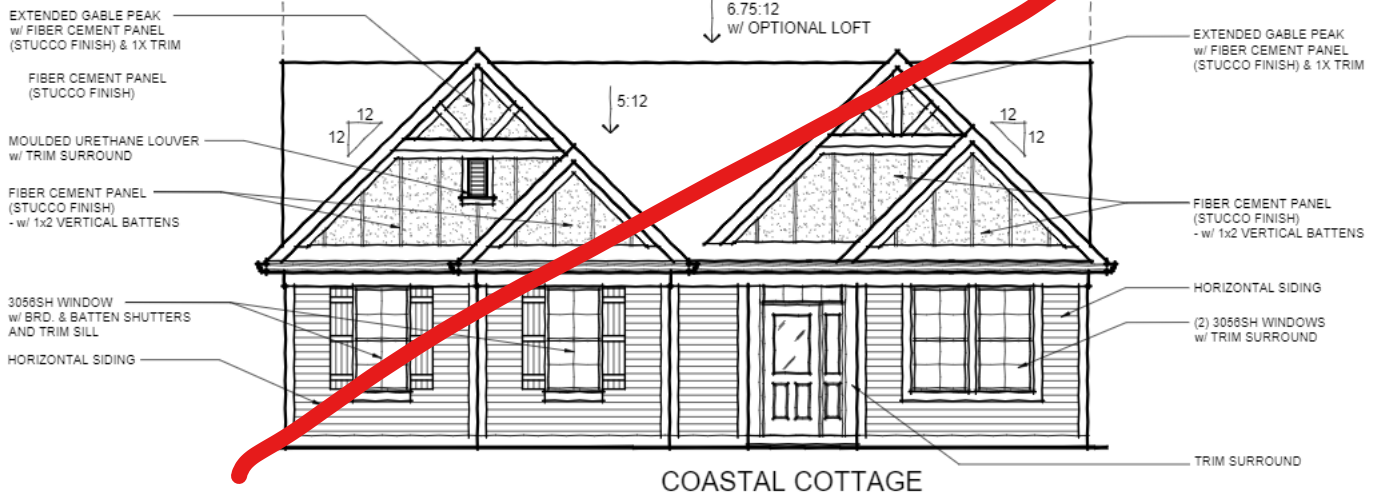
The Winthrop Coastal Cottage with Stone



WINTHROP

42-220

PATIO COLLECTION



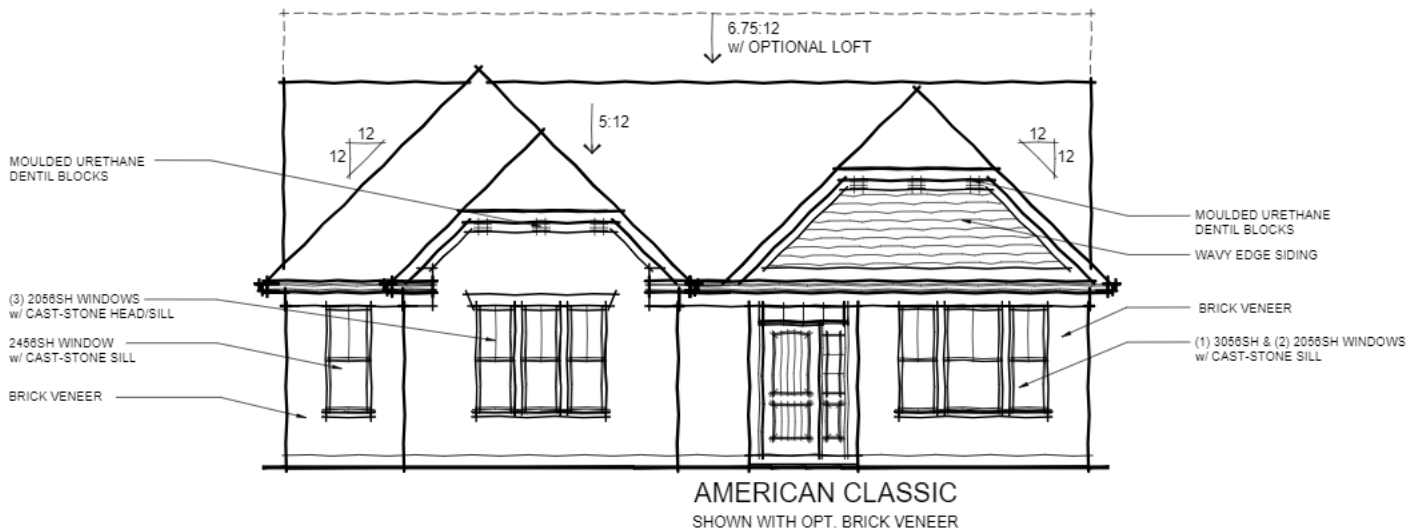
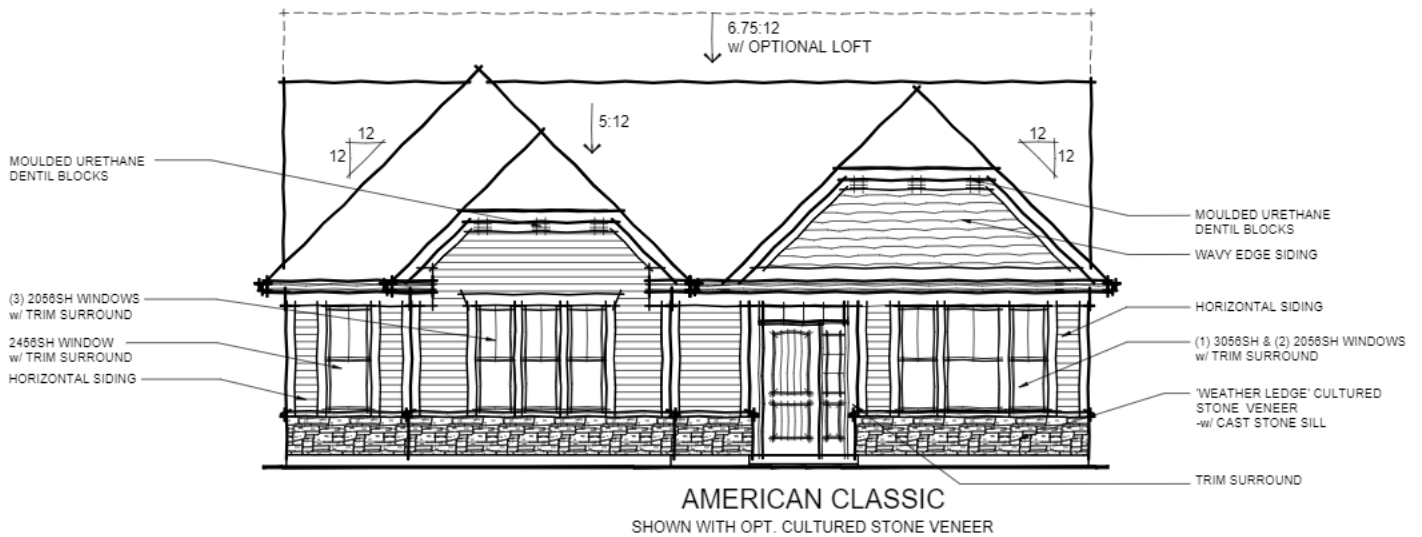
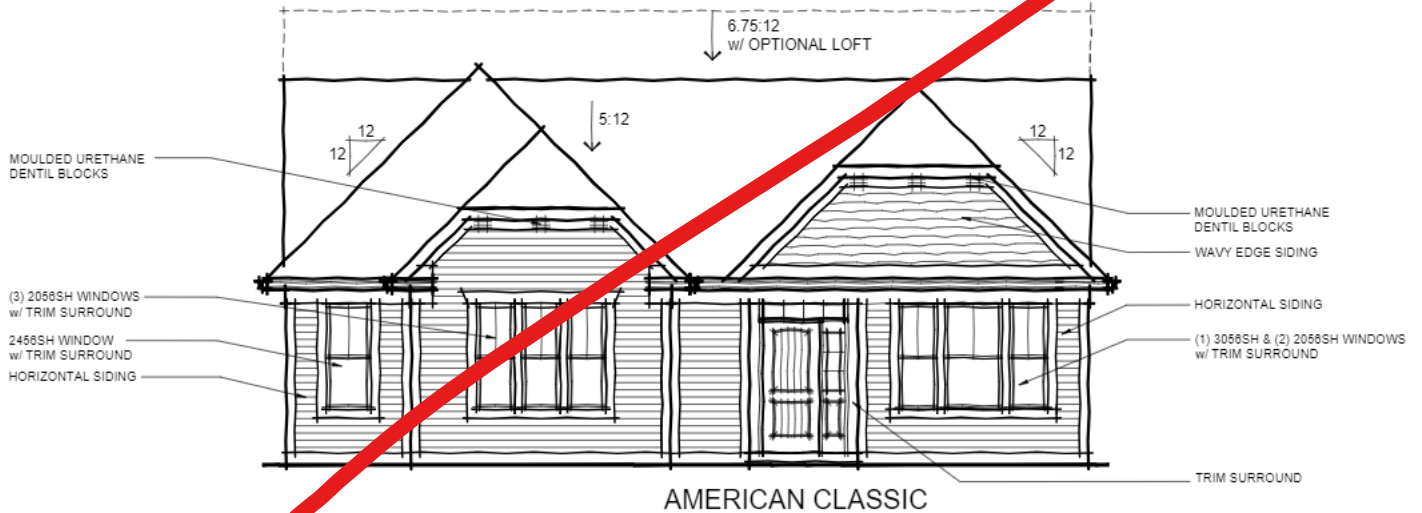
TO INCORPORATE NEW AND IMPROVED PRODUCTS,
FEATURES, AND IDEAS, WE RESERVE THE RIGHT TO
CHANGE DESIGNS WITHOUT NOTICE. COPYRIGHT © 2015
FISCHER HOMES, INC. ALL RIGHTS RESERVED.

WN-2-1
01.19.2022

WINTHROP

42-220

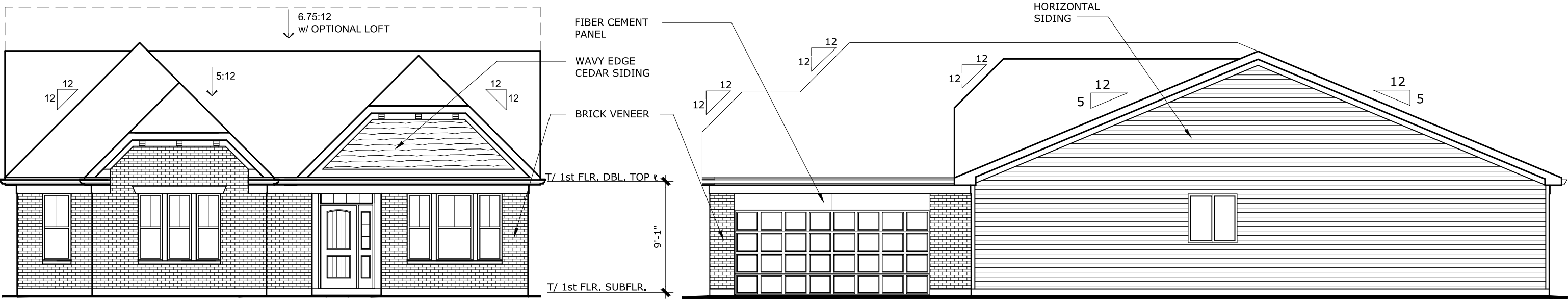
PATIO COLLECTION



TO INCORPORATE NEW AND IMPROVED PRODUCTS, FEATURES, AND IDEAS, WE RESERVE THE RIGHT TO CHANGE DESIGNS WITHOUT NOTICE. COPYRIGHT © 2015 FISCHER HOMES, INC. ALL RIGHTS RESERVED.

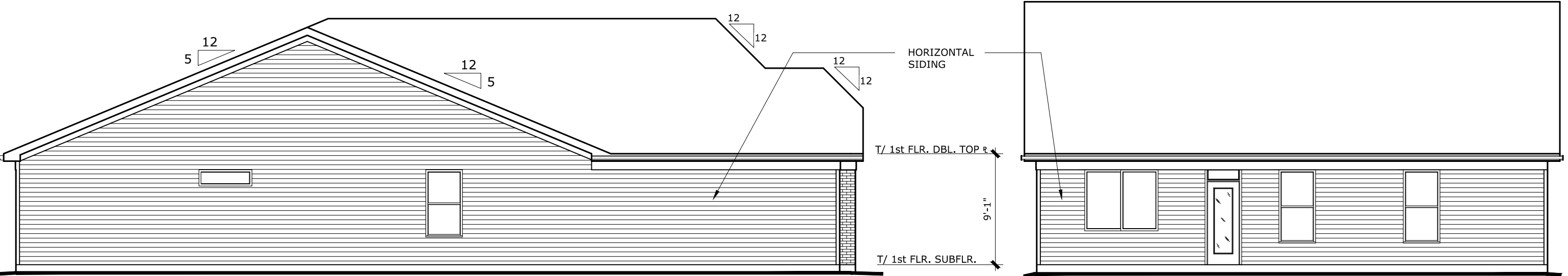
WN-2-2
01.19.2022

WINTHROP
AMERICAN CLASSIC
w/ BRICK



FRONT ELEVATION
SCALE 1/8" = 1'-0"

RIGHT SIDE ELEVATION
SCALE 1/8" = 1'-0"



LEFT ELEVATION
SCALE 1/8" = 1'-0"

REAR ELEVATION
SCALE 1/8" = 1'-0"



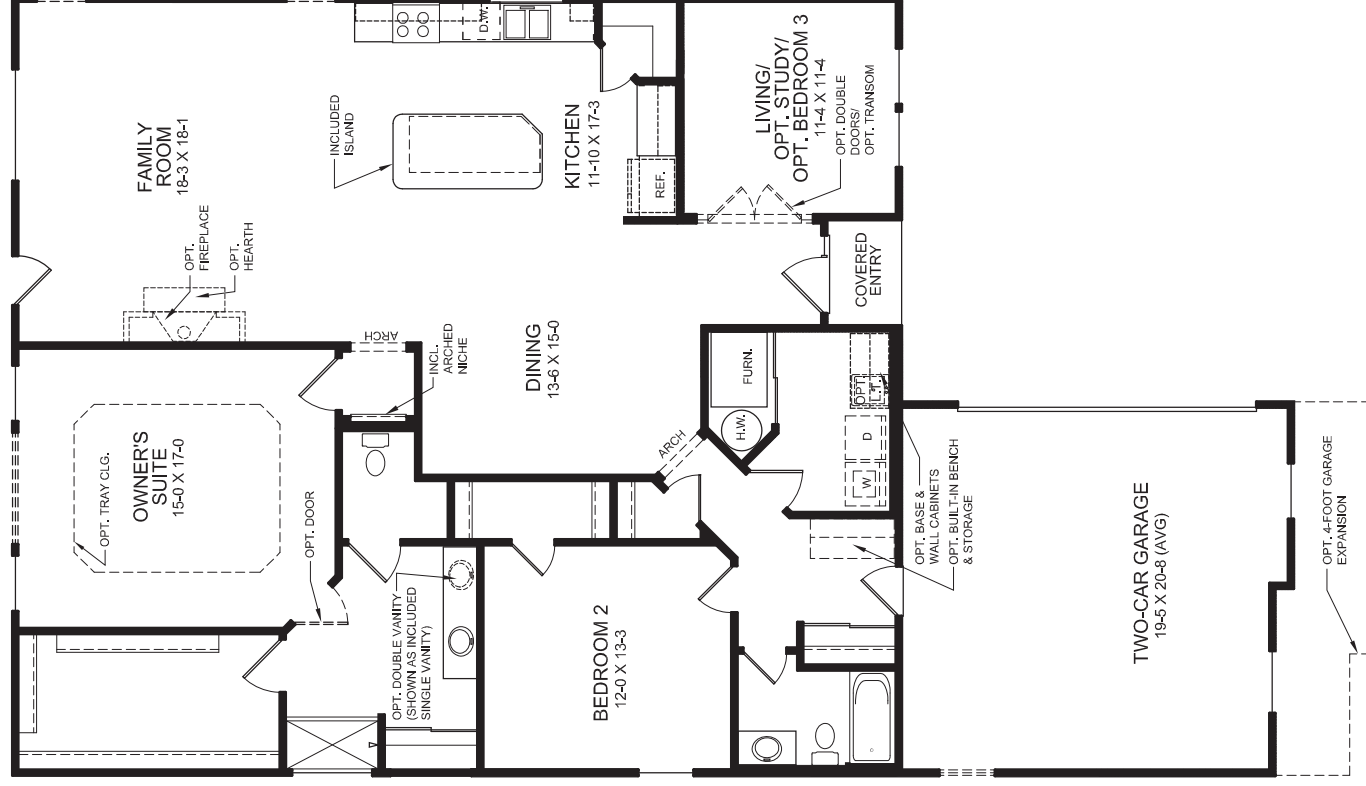
TO INCORPORATE NEW AND IMPROVED PRODUCTS,
FEATURES, AND IDEAS, WE RESERVE THE RIGHT TO
CHANGE DESIGNS WITHOUT NOTICE. COPYRIGHT © 2020
FISCHER HOMES, INC. ALL RIGHTS RESERVED.

welcome home.

Approximately 1966 sq ft and Up

PLAN FEATURES

- Two Bedroom Home with Living/Optional Study/Optional Bedroom #3 Flex Space
- Included 9ft First Floor Ceiling Height
- Family Foyer with Optional Drop Zone Built-ins
- Open Plan Design with Spacious Dining and Family Room Spaces
- Large Kitchen Island with Seating and Corner Pantry
- Optional Built-in Appliance Kitchen
- Private Owner's Suite with Owner's Bath and Large Walk-In Closet
- Variety of Owner's Bath Design Configurations
- Optional Covered Rear Patio/Deck
- Optional Sunroom
- Optional 4ft Garage Expansion
- Optional Loft with Optional Bedroom and Full Bath
- Optional Basement
- Optional Finished Lower Level with Optional Basement



FIRST FLOOR DESIGN
(INCLUDES 9 FT FIRST FLOOR CEILING HEIGHT)



Images & Options Available at [fischerhomes.com](https://www.fischerhomes.com)

Copyright © 2021 Fischer Homes, Inc. "Because we are constantly improving our product, we reserve the right to change features, brand names, dimensions, architectural details and designs. This brochure is for illustrative purposes only and not part of a legal contract. Windows, doors, and ceilings may vary on options and elevations selected. Not all features nor options are shown. Please ask our sales counselor for complete information."

RVSD, 02/21
IM 02/21

Our Plans Include You