

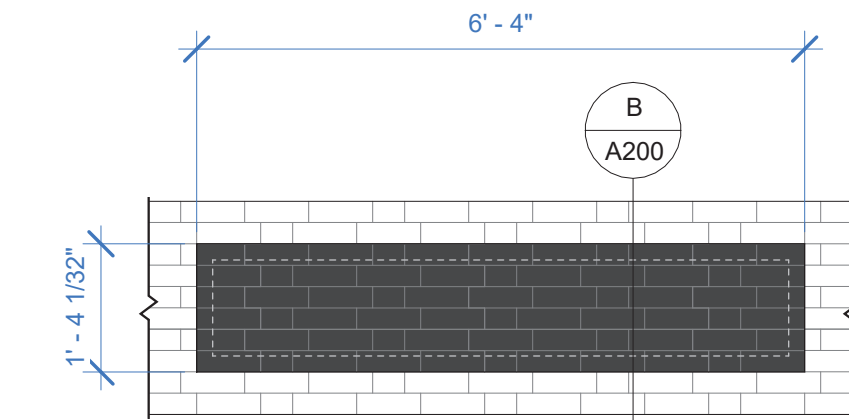
## GENERAL ENVELOPE REQUIREMENTS

\* THE FOLLOWING REQUIREMENTS ARE CODE MINIMUM, LISTED PRIMARILY FOR REFERENCE, AND NOT ALL MAY APPLY TO THIS PROJECT. MEETING THESE REQUIREMENTS DOES NOT EXEMPT CONTRACTOR FROM FOLLOWING OTHER SPECIFICATIONS OR DOCUMENTATION. ANY CONFLICT OR QUESTION SHALL BE REFERRED TO THE ARCHITECT FOR INTERPRETATION.

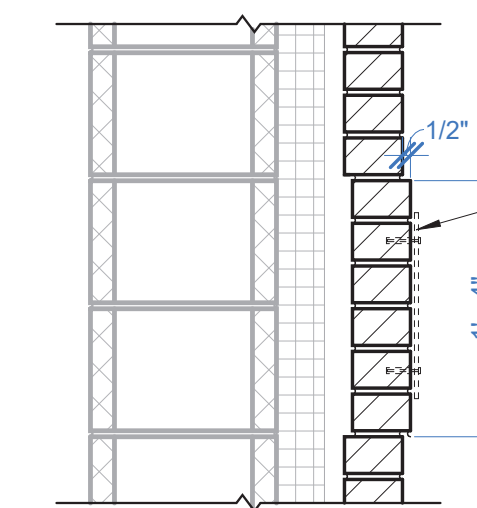
- THESE GENERAL NOTES APPLY TO THE ENTIRE PROJECT, AS IT RELATES TO THE BUILDING ENVELOPE (INCLUDING SLAB, FLOORS, FOUNDATIONS, WALLS, ROOFS, DOORS, GLAZING, SKYLIGHTS, ANY PENETRATIONS, AND ANY JOINERY IN ANY MATERIALS).
- ENSURE ALL SOURCES OF AIR LEAKAGE IN THE BUILDING THERMAL ENVELOPE ARE SEALED, CAULKED, GASKETED, WEATHER STRIPPED OR WRAPPED WITH MOISTURE VAPOR-PERMEABLE WRAPPING MATERIAL TO MINIMIZE AIR LEAKAGE.
- ENSURE FENESTRATION PRODUCTS ARE RATED IN ACCORDANCE WITH NFRC.
- ENSURE HIGH-ALBEDO ROOFS MEET SOLAR REFLECTANCE OF 0.70 AND THERMAL EMITTANCE OF 0.75 OR GREY OF 82.
- ENSURE BUILDING ENVELOPE INSULATION IS LABELED WITH R-VALUE OR INSULATION CERTIFICATE PROVIDING R-VALUE AND OTHER RELEVANT DATA IS PROVIDED.
- ENSURE INSULATION IS INSTALLED IN SUBSTANTIAL CONTACT WITH THE INSIDE SURFACE SEPARATING CONDITIONED SPACE FROM UNCONDITIONED SPACE.
- ENSURE RECESSED EQUIPMENT INSTALLED IN BUILDING ENVELOPE ASSEMBLIES DOES NOT COMPRESS THE ADJACENT INSULATION.
- ALL STEEL MEMBERS ORIGINATING INSIDE THE BUILDING AND PROTRUDING PAST THE EXTERIOR FACE OF THE BUILDING SHALL BE INSULATED WITH A SPRAY APPLIED COATING SUITABLE FOR THE CONDITION, FROM 1' BEYOND THE EXTERIOR TO A MINIMUM OF 3' PAST THE INTERIOR FINISHED FACE OF THE WALL.
- REFER TO DETAIL C/A200 FOR MORE INFORMATION ON SUSSEX BOND PATTERN. REFER TO ENLARGED ELEVATIONS FOR DETAILS AT BUILDING CORNERS AND TRANSITIONS.

## ELEVATION KEYNOTES ①

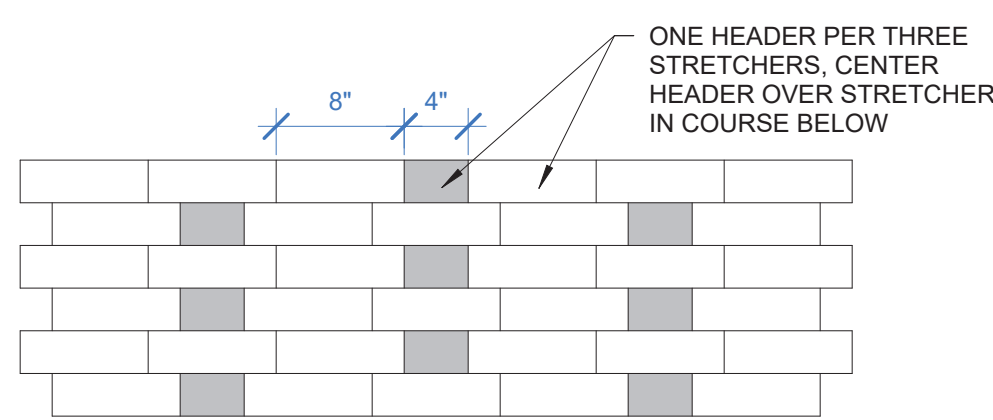
- BRICK VENEER - COLOR 1 (SUSSEX BOND)
- BRICK VENEER - COLOR 1 (RUNNING BOND)
- BRICK VENEER - COLOR 2 (RUNNING BOND)
- BRICK VENEER - COLOR 1 (SUSSEX BOND, RECESS 1/2")
- BRICK VENEER SIGN PENDENT - COLOR 3 (SUSSEX BOND, PROJECT 1/2"), REFER TO DETAILS
- STONE MASONRY VENEER (MODIFIED RUNNING BOND)
- STONE MASONRY VENEER (MODIFIED RUNNING BOND, RECESS COURSE 1/2")
- 6" DEEP, PRE-FINISHED ALUMINUM STOREFRONT
- PRE-FIN ALUMINUM COMPOSITE PANELS. PROVIDE REVEAL JOINTS AS SHOWN.
- PRE-FINISHED (CUSTOM), INSULATED, ALUMINUM FRAMED, COMMERCIAL GRADE MOTORIZED OVERHEAD DOORS WITH GLAZING AT CENTER 6' OF PANELS.
- STEEL FRAMED DECK PROJECTION CANOPY, WITH MEMBRANE ROOF ASSEMBLY SLOPED TO DRAIN AND INTERNAL DOWNSPOUT. CONNECT TO BOOT AND STORMWATER SYSTEM. REFER TO CIVIL DRAWINGS.
- PRE-ENGINEERED, PREFINISHED CANTILEVERED CANOPY WITH DOWNSPOUT. CONNECT TO BOOT AND STORMWATER SYSTEM. REFER TO CIVIL DRAWINGS.
- INTERNALLY LIT BUILDING SIGNAGE. 48" LETTER HEIGHT. COORDINATE POWER CONNECTION AT EACH NUMBER ABOVE CEILING OR IN CONDUIT WHERE EXPOSED.
- PREFINISHED SHEET METAL SCUPPER AND DOWNSPOUT. REFER TO ROOF PLAN AND DETAILS. CONNECT DOWNSPOUT TO BOOT AND STORMWATER SYSTEM. REFER TO CIVIL DRAWINGS.
- MANUFACTURED METAL LADDER. REFER TO ROOF PLANS AND SPECIFICATIONS.
- PREFINISHED SHEET METAL COPING
- PRE-FINISHED, UNINSULATED, ALUMINUM, COMMERCIAL GRADE MANUAL SECTIONAL OVERHEAD DOOR
- 10" GALVANIZED STEEL CHANNEL LINTEL, PAINTED. REFER TO DETAILS
- GALVANIZED HOLLOW METAL DOOR AND FRAME (PAINTED)
- REMOVABLE 1" PREFINISHED ALUM. COMPOSITE PANEL IN STEEL ANGLE FRAME. REFER TO DETAILS
- STEEL FRAMED DECK PROJECTION CANOPY, WITH MEMBRANE ROOF ASSEMBLY SLOPED TO DRAIN OFF FRONT.
- LINE OF GRADE OR PAVEMENT. REFER TO SITE DRAWINGS
- PRE-FINISHED BUILDING MOUNTED LETTERS. 18" HEIGHT.
- PREFINISHED SHEET METAL SCUPPER AND DOWNSPOUT. REFER TO ROOF PLAN AND DETAILS. SPLASH DOWNSPOUT ONTO METAL SPLASH PAN SET IN SEALANT ON ROOF ON WALKWAY PAD.
- INTERNALLY LIT BUILDING SIGNAGE. 60" LETTER HEIGHT. COORDINATE POWER CONNECTION AT EACH NUMBER ABOVE CEILING OR IN CONDUIT WHERE EXPOSED.
- 3/8" MASONRY CONTROL JOINT, FULL HEIGHT.
- PREFIN. CORRUGATED AND PERFORATED METAL MECHANICAL SCREEN ON GALVANIZED STEEL FRAMING.



A SIGN PENDENT DETAIL  
1/2" = 1'-0"



B SIGN PENDENT SECTION  
1" = 1'-0"



C SUSSEX BOND BRICK DETAIL  
1" = 1'-0"

**DELV**  
DESIGN

## VERNON TOWNSHIP FIRE DEPARTMENT

NEW FIRE STATION  
432

### ARCHITECT

DELV Design  
212 W 10th St, STE F125  
Indianapolis, IN 46202  
(317) 296-7400

### MEP

Advanced Engineering Consultants  
8606 Allisonville Rd, STE 270  
Indianapolis, IN 46250  
(317) 413-5724

### STRUCTURAL

CE Solutions, Inc.  
10 Shoshone Dr  
Carmel, IN 46032  
(317) 816-1912

### CIVIL

HWC Engineering  
135 N Pennsylvania Street, STE 2800  
Indianapolis, IN 46204  
(317) 347-3663

### CONSTRUCTION MANAGER

Garmon Construction Services  
5988 N Michigan Rd  
Indianapolis, IN 46228  
(317) 682-1001

## TAC + PLANNING SUBMITTAL

NOT FOR CONSTRUCTION

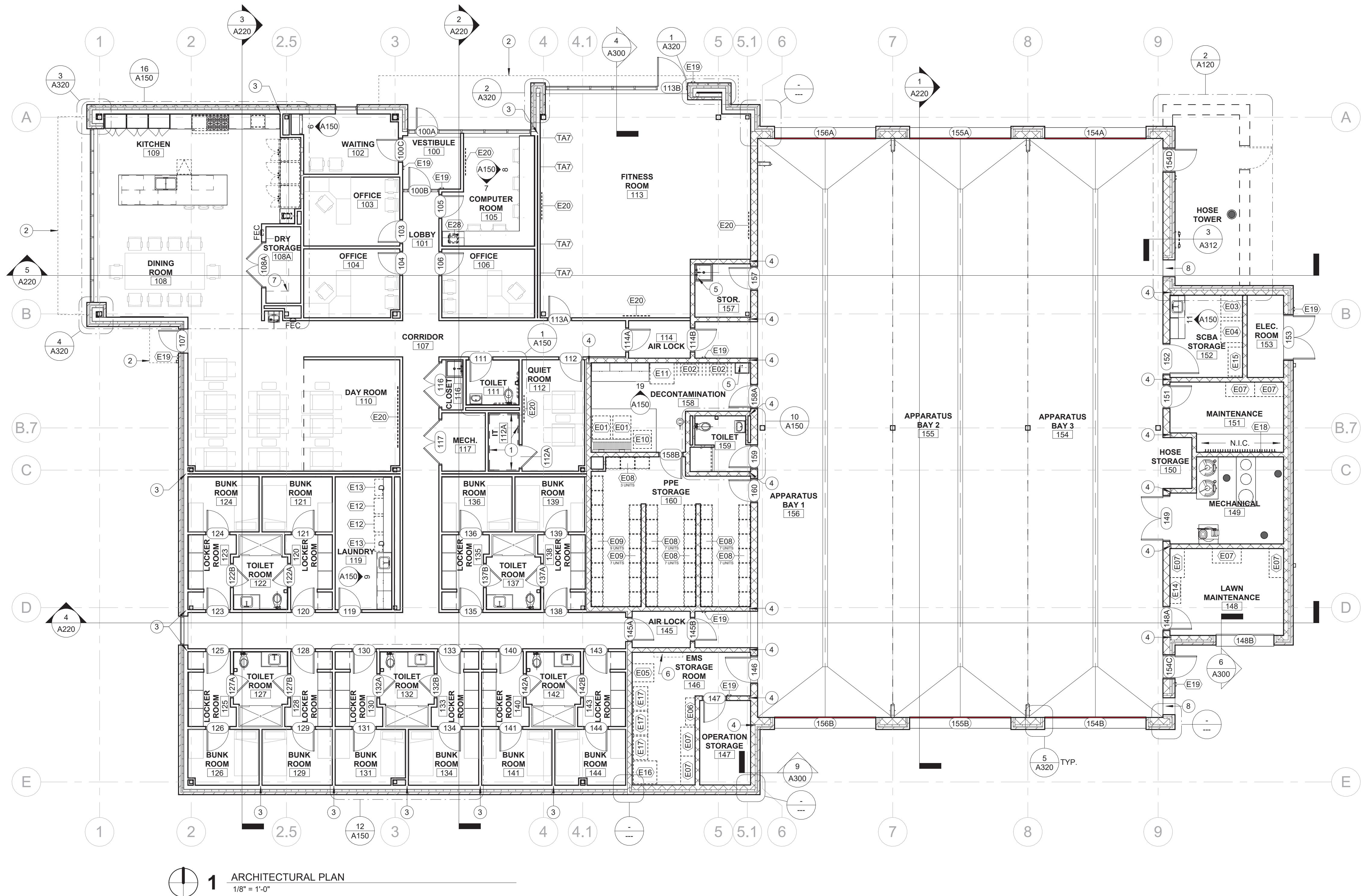
No.	Description	Date
A	TAC Comments	04/13/2022

PROJECT #: 21-044  
ISSUE DATE: 03/25/2022  
DRW: ATZ | CHK: JSS

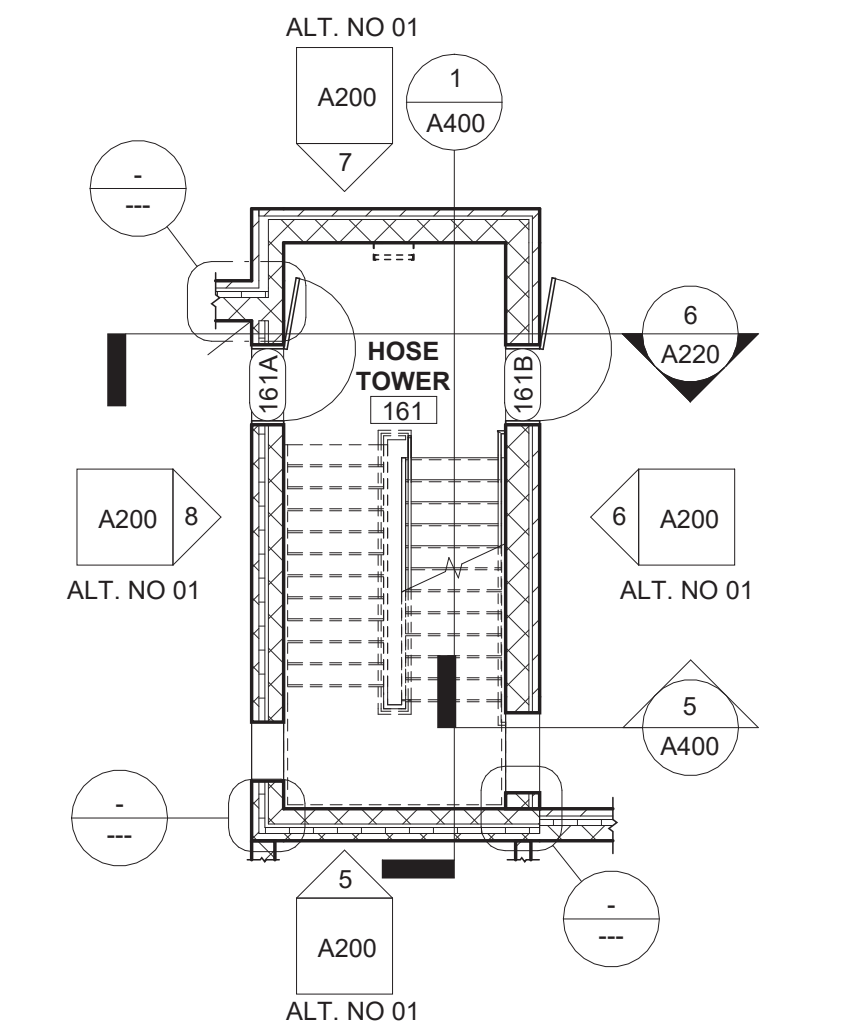
## EXTERIOR ELEVATIONS

A200





1 ARCHITECTURAL PLAN  
1/8" = 1'-0"



2 LEVEL 01 - PARTIAL ARCHITECTURAL PLAN  
1/8" = 1'-0" ALTERNATE NO. 01

## GENERAL ARCH. NOTES

- THESE GENERAL NOTES APPLY TO ARCHITECTURAL DRAWINGS.
- WORK SHOWN IN THE DRAWINGS SHALL BE BASE BID UNLESS SPECIFICALLY NOTED TO BE BY ALTERNATE BID.
- FIELD VERIFY EXISTING FINISH FLOOR ELEVATIONS PRIOR TO STARTING CONSTRUCTION. MATCH NEW FLOOR ELEVATIONS WITH EXISTING UNLESS NOTED OTHERWISE.
- DOOR AND FRAME NUMBERS CORRESPOND TO RESPECTIVE ROOM NUMBERS. IN ROOMS WITH MULTIPLE OPENINGS, A SUFFIX HAS BEEN ADDED TO DOOR NUMBERS, I.E. 100A.
- COORDINATE EQUIPMENT WORK WITH MANUFACTURERS AND SUPPLIERS TO INSURE PROPER ROUGH-IN CLEARANCES FOR INSTALLATION, USE AND MAINTENANCE. NOTIFY ARCHITECT IF CLEARANCES FOR SELECTED EQUIPMENT DO NOT HAVE THE MINIMUM REQUIRED CLEARANCES.
- PROVIDE CONTROL JOINTS (C.J.) IN GYPSUM BOARD WALL CONSTRUCTION AS INDICATED. WHERE NOT SHOWN, PROVIDE MAXIMUM SPACING BETWEEN JOINTS OF 30'-0". VERIFY FINAL CONTROL JOINT LOCATIONS, WHETHER OR NOT INDICATED ON THE DRAWINGS, WITH ARCHITECT PRIOR TO STARTING WORK.
- PROVIDE WATER-RESISTANT GYPSUM BOARD ON WALLS WITH OPERABLE PLUMBING FIXTURES AND WITHIN 4'-0" OF DRINKING FOUNTAINS OR WATER COOLERS.
- PROVIDE FRP PANELS AND/OR ACRYLIC PANELS 2' PAST THE EDGE OF MOP SINKS AT GYPSUM WALLS. HEIGHT TO BE 4'. CAULK ALL EDGES.
- PROVIDE FINISHED END PANELS, FILLERS, SUPPORTS, ETC. REQUIRED FOR A COMPLETE CABINERY INSTALLATION. PROVIDE CUTOFFS, ACCESS PANELS AND REMOVABLE COMPONENTS AS REQUIRED BY NEW OR EXISTING CONDITIONS SUCH AS ELECTRICAL OUTLETS, JUNCTION BOXES, CLEANOUTS, ETC. MOUNT TOP OF WALL CABINETS AT 7'-0" A.F.F. UNLESS OTHERWISE INDICATED.
- VERIFY MOUNTING HEIGHTS OF ACCESSORIES, EQUIPMENT, DOOR HARDWARE, CASEWORK, ETC., AND PROVIDE SOLID BLOCKING BEHIND ITEMS REQUIRING ANCHORAGE. PROVIDE FIRE TREATED WOOD BLOCKING OR METAL STRAPS BETWEEN FRAMING MEMBERS AS REQUIRED TO SUPPORT WEIGHT AND USE OF ITEMS TO BE SUPPORTED. WHERE MOUNTING HEIGHTS ARE NOT INDICATED, MOUNT ITEMS IN ACCORDANCE WITH RECOGNIZED INDUSTRY STANDARDS, COORDINATE LOCATIONS WITH MANUFACTURER OR SUPPLIER AND REFER MOUNTING HEIGHT QUESTIONS TO ARCHITECT FOR INTERPRETATION.
- PROVIDE SEALANT BETWEEN HOLLOW METAL FRAME PERIMETERS AND SURROUNDING WALL CONSTRUCTION UNLESS OTHERWISE INDICATED.
- PROVIDE SEALANT BETWEEN INTERIOR AND EXTERIOR WINDOW AND STOREFRONT FRAME PERIMETERS AND SURROUNDING CONSTRUCTION UNLESS OTHERWISE INDICATED.
- PROVIDE SEALANT BETWEEN DISSIMILAR MATERIALS SUCH AS GYPSUM BOARD AND MASONRY, MASONRY AND CONCRETE, COUNTERTOPS AND WALLS, ETC.
- DO NOT BEGIN WORK THAT MAY REQUIRE COORDINATION, SUCH AS CEILING INSTALLATION, PRIOR TO FINAL SUBMITTAL OF MECHANICAL AND ELECTRICAL COORDINATION DRAWINGS TO ARCHITECT NOR PRIOR TO RESOLUTION AND APPROVAL OF COORDINATION ISSUES.
- COORDINATE BLOCKING AND MEP CONNECTIONS AS REQUIRED FOR NOTED EQUIPMENT.

## ARCH PLAN KEYNOTES 1

- DASHED LINE INDICATES SURFACE APPLIED, MECHANICALLY ANCHORED, 3/4" FRT PLYWOOD FROM 6" A.F.F. TO 8'-6" A.F.F. (PAINT BLACK).
- LINE OF CANOPY ABOVE.
- FILL EXTERIOR STUD CAVITY WITH BATT INSULATION (2'-0") CENTERED ON WALL INTERSECTION FOR ACOUSTIC SEPARATION.
- INTERIOR MASONRY (AND GYPSUM BOARD WHERE APPLICABLE) CONTROL JOINT DETAIL.
- INSTALL 8" X 24" 18 GAUGE STAINLESS STEEL SURFACE MOUNTED SHELF ON BRACKETS, BASIS OF DESIGN ASI 0692, MOUNTED 5'-0" A.F.F.
- INSTALL 8" X 48" 18 GAUGE STAINLESS STEEL SURFACE MOUNTED SHELF ON BRACKETS, BASIS OF DESIGN ASI 0692, MOUNTED 5'-0" A.F.F.
- 20" DEEP (3 LEVELS) VINYL COATED WIRE SHELVING ON PREFINISHED METAL STANDARDS AND BRACKETS BY CLOSETMAID OR APPROVED EQUAL.
- MECHANICAL LOUVER, REFER TO MEP.

**DELV**  
DESIGN

## VERNON TOWNSHIP FIRE DEPARTMENT

### NEW FIRE STATION 432

#### ARCHITECT

DELV Design  
212 W 10th St, STE F125  
Indianapolis, IN 46202  
(317) 296-7400

#### MEP

Advanced Engineering Consultants  
8606 Allisonville Rd, STE 270  
Indianapolis, IN 46250  
(317) 413-5724

#### STRUCTURAL

CE Solutions, Inc.  
10 Shoshone Dr  
Carmel, IN 46032  
(317) 818-1912

#### CIVIL

HWC Engineering  
135 N Pennsylvania Street, STE 2800  
Indianapolis, IN 46204  
(317) 347-3663

#### CONSTRUCTION MANAGER

Garmon Construction Services  
5988 N Michigan Rd  
Indianapolis, IN 46228  
(317) 682-1001

## TAC + PLANNING SUBMITTAL

NOT FOR CONSTRUCTION

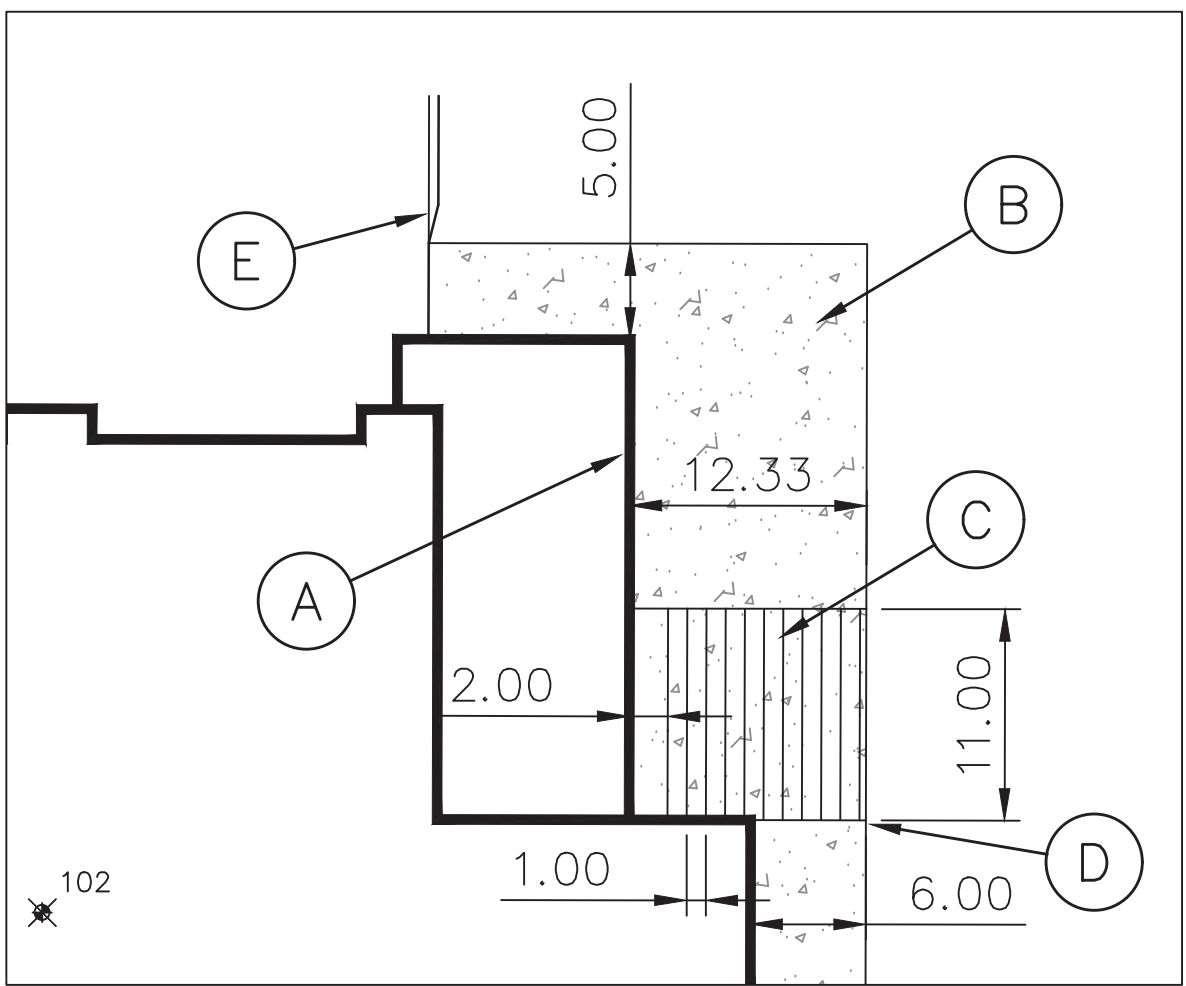
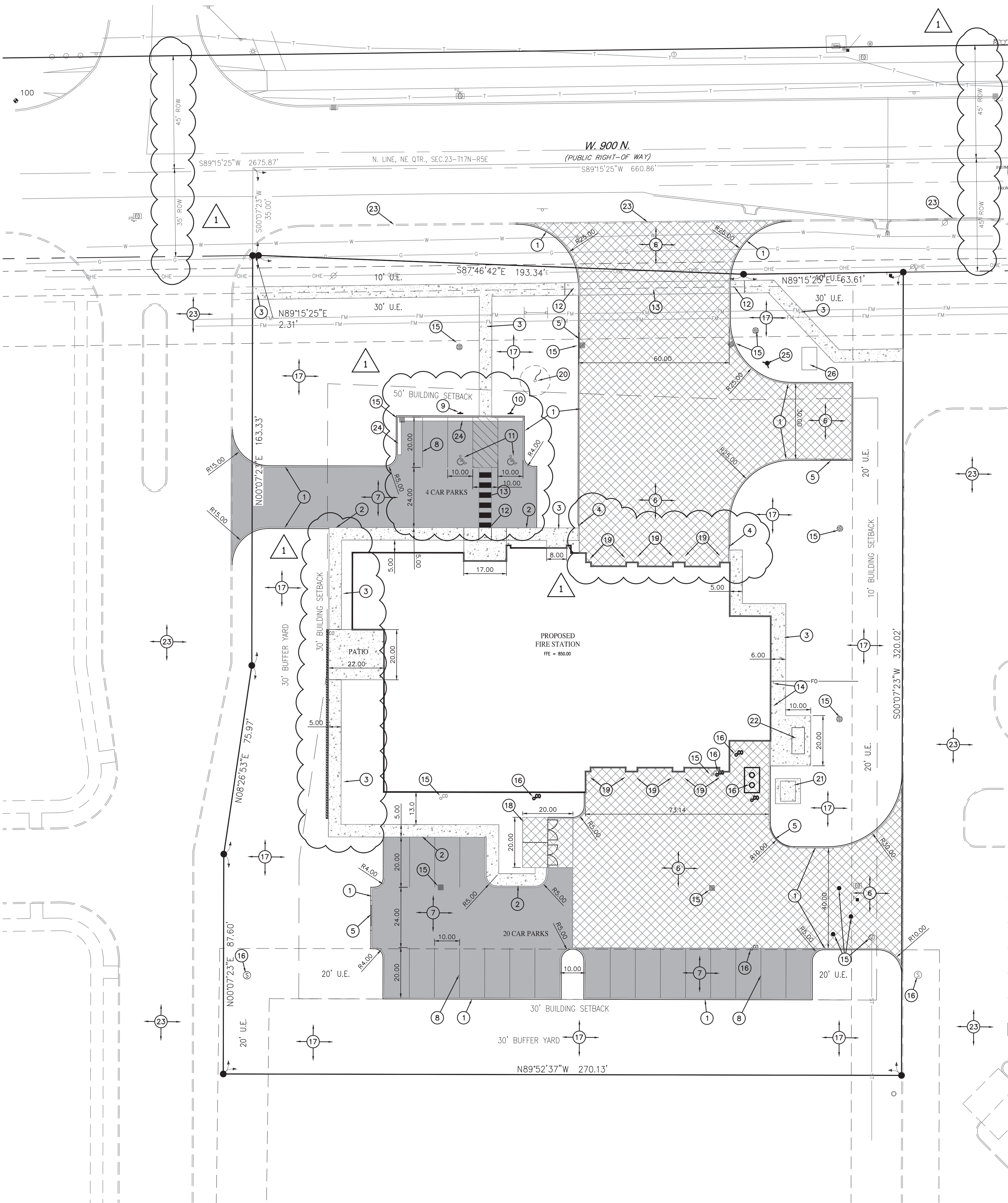
No.	Description	Date

PROJECT #: 21-044  
ISSUE DATE: 03/25/2022  
DRW: ATZ | CHK: JSS

## ARCHITECTURAL PLAN

**A120**





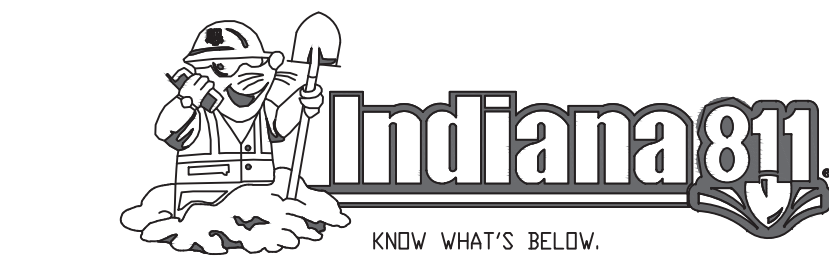
ALT. #1 BUILDING & WALK ADD:  
SCALE: 1" = 10'

SITE IMPROVEMENT KEYNOTES:

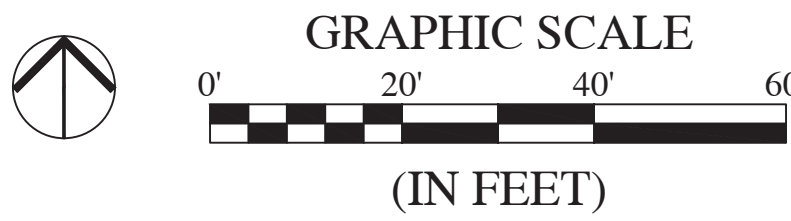
- ALT. HOSE TOWER. SEE ARCH. PLANS FOR DETAILS.
- INSTALL SIDEWALK APRON
- INSTALL SCORED JOINTS ON WALK @ 12' O.C.
- LIMIT OF ALTERNATE
- INSTALL CURB TAPER

ALT. #2 CONCRETE PAVING:

CONTRACTOR TO PROVIDE ALTERNATE PRICING TO PROVIDE REGULAR DUTY CONCRETE IN LIEU OF THE REGULAR DUTY ASPHALT IN THE PARKING AND DRIVE AREAS. SEE DETAIL #1 ON SHEET C803 FOR CONCRETE SECTION.



Call 811 or 800-382-5544 Before you Dig!



LEGEND:

EXISTING

PROPOSED

- FENCE
- SANITARY MANHOLE
- STORM MANHOLE
- STORM INLET
- FIRE HYDRANT
- BENCHMARK
- WATER VALVE
- GAS VALVE
- CLEAN OUT
- BOLLARD
- MONUMENT
- WATER METER
- LIGHT POLE
- UTILITY POLE
- UTILITY POLE

PROPOSED REGULAR DUTY ASPHALT PAVEMENT (SEE ALT. #2 NOTE)

PROPOSED SIDEWALK

PROPOSED HEAVY DUTY CONCRETE PAVEMENT

SITE IMPROVEMENT KEYNOTES:

- INSTALL BARRIER CURBS PER TOWN STANDARDS
- INSTALL INTEGRAL CONCRETE CURB AND WALK (PER DETAIL #3 ON SHEET C803)
- INSTALL CONCRETE SIDEWALK (PER DETAIL #2 ON SHEET C803)
- INSTALL CURB TAPER (PER DETAIL #18 ON SHEET C803)
- INSTALL DEPRESSED CURB (PER DETAIL #17 ON SHEET C803)
- INSTALL HEAVY DUTY CONCRETE PAVEMENT (PER DETAIL #6 ON SHEET C803)
- INSTALL REGULAR DUTY ASPHALT (PER DETAIL #8 ON SHEET C803)
- INSTALL PAVEMENT STRIPING. (PER DETAIL #9 ON SHEET C803 & TOWN STANDARDS)
- INSTALL VAN ACCESSIBLE PARKING SIGN (PER DETAIL #14 ON SHEET C803)
- INSTALL ACCESSIBLE PARKING SIGN (PER DETAIL #14 ON SHEET C803)
- INSTALL ADA PARKING STRIPING (PER DETAIL #9 ON SHEET C803)
- INSTALL CONCRETE RAMP (PER DETAIL #10 ON SHEET C803)
- INSTALL STRIPED CROSSWALK
- SEE MEP SHEETS FOR UTILITY CONNECTIONS
- STORM STRUCTURE. (SEE SITE DRAINAGE AND UTILITY PLAN FOR MORE INFORMATION)
- SANITARY STRUCTURE. (SEE SITE DRAINAGE AND UTILITY PLAN FOR MORE INFORMATION)
- LANDSCAPING / GRASS. (SEE LANDSCAPE PLANS AND DETAILS ON SHEETS L101-L102)
- INSTALL DUMPSTER ENCLOSURE (PER DETAILS ON SHEET C806)
- INSTALL PIPE BOLLARD (PER DETAIL #4 ON SHEET C803)
- INSTALL FLAGPOLE
- INSTALL TRANSFORMER PAD PER UTILITY
- GENERATOR BY OTHERS
- PROPOSED IMPROVEMENTS BY OTHERS UNDER CONSTRUCTION
- INSTALL CURB & GUTTER PER TOWN STANDARDS
- INSTALL FIRE HYDRANT
- INSTALL WATER SERVICE VAULT

SITE IMPROVEMENT GENERAL NOTES:

- ALL EXCAVATED TRENCHES UNDER PROPOSED PAVED AREAS INCLUDING SIDEWALKS SHALL BE BACKFILLED WITH GRANULAR MATERIAL PER PROJECT SPECIFICATIONS AND COMPACTED IN LIFTS. GRANULAR MATERIAL SHALL EXTEND 5 FEET BEYOND THE LIMITS OF THE PAVEMENT AT THE SURFACE WITH A 1:1 SLOPE OUTWARD TO THE BOTTOM OF THE TRENCH.
- WHERE NECESSARY, UTILITY SERVICE CONDUITS SHALL BE INSTALLED UNDER PAVED AREAS AND BACKFILLED AS SPECIFIED ABOVE BEFORE PAVEMENT IS CONSTRUCTED. COORDINATE CONDUIT REQUIREMENTS WITH UTILITY COMPANIES AND MECHANICAL CONTRACTORS.
- FOLLOWING THE COMPLETION OF ALL UNDERGROUND WORK IN PAVED AREAS, AGGREGATE BASE SHALL BE APPLIED AND COMPACTED TO THE THICKNESS INDICATED ON THE APPROPRIATE PAVEMENT DESIGN DETAIL. COMPACT BASE COURSE AT OPTIMUM MOISTURE CONTENT TO NOT LESS THAN 95% OF MAXIMUM DRY DENSITY ACCORDING TO ASTM D-1557. WHEN THICKNESS OF COMPACTED BASE EXCEEDS 6 INCHES, PLACE MATERIALS IN EQUAL LAYERS, WITH NO LAYER MORE THAN 6 INCHES OR LESS THAN 3 INCHES THICK WHEN COMPACTED. COMPACT WITH A MEDIUM WEIGHT SMOOTH WHEELED ROLLER OR EQUIVALENT, ALONG CURBS, WALLS AND ALL LOCATIONS NOT ACCESSIBLE TO THE ROLLER. COMPACT AGGREGATE BASE WITH HAND OPERATED TAMPERS.
- PORTLAND CEMENT CONCRETE PAVEMENT SHALL BE CONSTRUCTED IN ACCORDANCE WITH PROJECT SPECIFICATIONS. SEE CONSTRUCTION DETAILS FOR PAVEMENT DESIGN INFORMATION.
- THE CONNECTION OF NEW PAVEMENT TO EXISTING PAVEMENT SHALL MATCH EXISTING GRADES AND PROFILES.
- PORTLAND CEMENT SHALL CONFORM TO THE REQUIREMENTS OF ASTM C-150. ONLY ONE BRAND AND MANUFACTURER OF APPROVED CEMENT SHALL BE USED FOR ANY ONE STRUCTURE. REGULAR FINE AND COARSE AGGREGATES SHALL CONFORM TO THE REQUIREMENTS OF ASTM C-33. ALL WATER USED SHALL BE POTABLE, CLEAN AND FREE FROM OILS, ACIDS, ALKALIS, ORGANIC MATERIAL, OR OTHER SUBSTANCES THAT MAY BE DETRIMENTAL TO CONCRETE OR STEEL.
- REINFORCING STEEL SHALL CONFORM TO THE REQUIREMENTS OF ASTM A-615, GRADE 60. WELDED WIRE FABRIC OR WIRE MESH SHALL CONFORM TO THE REQUIREMENTS OF ASTM A-185. REINFORCEMENT SHALL BE CUT AND BENT IN ACCORDANCE WITH ACI 315. COMPLY WITH AISH RECOMMENDED PRACTICE "PLACING REINFORCING BARS" FOR PLACING AND SUPPORTING REINFORCEMENT.
- ALL CONCRETE USED ON THIS PROJECT SHALL BE CLASS A STRUCTURAL CONCRETE WITH A 28-DAY COMPRESSIVE STRENGTH OF 4000 PSI, 6-1/2 BAGS, 2 TO 4 INCH SLUMP RANGE, 5% TO 8% AIR CONTENT. CLASS A CONCRETE SHALL BE PROPORTIONED IN ACCORDANCE WITH ACI 211.1. ALL READY MIXED CONCRETE SHALL BE MIXED, DELIVERED, AND PLACED IN ACCORDANCE WITH ASTM C-94.
- FORMS SHALL BE CONSTRUCTED OF WOOD, PLYWOOD, STEEL, OR OTHER APPROVED MATERIALS AND SHALL BE CONSTRUCTED SO THAT THE FINISHED CONCRETE WILL CONFORM TO THE DIMENSIONS AND CONTOURS SHOWN ON THE DRAWINGS. FORM SURFACES SHALL BE SMOOTH AND FREE FROM HOLES, GENTS, SACS, AND OTHER IRREGULARITIES. THE FORMS SHALL BE COATED WITH A NON-STAINING OIL BEFORE CONCRETE IS POURED. REMOVE FORMS A MINIMUM OF 24 HOURS AFTER PLACING CONCRETE.
- ALL CONCRETE SHALL BE PLACED IN ACCORDANCE WITH ACI 304. FORMED CONCRETE SHALL BE UNIFORMLY CONSOLIDATED USING A MECHANICAL VIBRATOR. COMPLY WITH THE RECOMMENDATIONS OF ACI 308R FOR COLD WEATHER PLACEMENT AND ACI 308R FOR HOT WEATHER PLACEMENT. PROTECT FRESHLY PLACED CONCRETE FROM PREMATURE DRYING AND TO ENSURE PROPER MOISTURE CONTROL DURING CURING.

GEOMETRIC LAYOUT NOTES:

- SURVEY PREPARED BY:  
HWC ENGINEERING LLC  
135 N PENNSYLVANIA STREET, SUITE 2800  
INDIANAPOLIS, INDIANA 46204  
317-347-5563
- ALL DIMENSIONS ARE REFERENCED TO THE EDGE OF PAVEMENT, EDGE OF SIDEWALK, FRONT OF CURB, OR OUTSIDE SURFACE OF BUILDING WALL UNLESS OTHERWISE NOTED.
- REFER TO BUILDING PLANS FOR ALL BUILDING DIMENSIONS AND LAYOUT DETAILS.
- THE CONTRACTOR IS RESPONSIBLE FOR PROVIDING ALL REQUIRED CONSTRUCTION LINE AND GRADE TO ENSURE ACCURATE LAYOUT OF SITE IMPROVEMENTS. DIGITAL FILES OF CONSTRUCTION PLANS ARE AVAILABLE UPON REQUEST.
- CONTRACTOR IS RESPONSIBLE FOR PROTECTING EXISTING PROPERTY CORNER MONUMENTS. ANY PROPERTY CORNER MONUMENT DISTURBED OR DESTROYED DURING CONSTRUCTION ACTIVITY SHALL BE REPLACED BY AN INDIANA LICENSED SURVEYOR AT CONTRACTOR'S EXPENSE.
- CONTRACTOR IS RESPONSIBLE FOR PROTECTING BENCHMARKS. IF BENCHMARKS ARE TO BE DISTURBED OR REMOVED AS PART OF THE CONSTRUCTION PLAN ACTIVITY, CONTRACTOR SHALL HAVE A INDIANA LICENSED SURVEYOR ESTABLISH ANOTHER BENCHMARK AT A LOCATION OUT OF HARM'S WAY.
- ANY DISCREPANCIES IN LAYOUT DIMENSIONS SHALL BE REPORTED TO THE PROJECT ENGINEER PRIOR TO PROCEEDING WITH WORK AT THAT LOCATION.

**DELV**  
DESIGN

**VERNON  
TOWNSHIP  
FIRE  
DEPARTMENT**  
NEW FIRE STATION

**ARCHITECT**

DELV Design  
212 W 10th St, STE F125  
Indianapolis, IN 46202  
(317) 296-7400

**MEP**

Advanced Engineering Consultants  
8606 Allisonville Rd, STE 270  
Indianapolis, IN 46250  
(317) 413-5724

**STRUCTURAL**

CE Solutions, Inc.  
10 Shoshone Dr  
Carmel, IN 46032  
(317) 818-1912

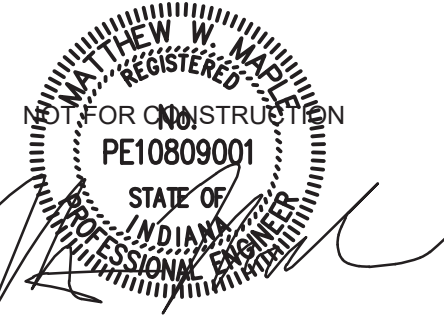
**CIVIL**

HWC Engineering  
135 N Pennsylvania Street, STE 2800  
Indianapolis, IN 46204  
(317) 347-3663

**CONSTRUCTION MANAGER**

Garmong Construction Services  
5988 N Michigan Rd  
Indianapolis, IN 46228  
(317) 682-1001

**TAC + PLANNING  
SUBMITTAL**



No.	Description	Date
1	TAC COMMENTS	04/13/2022

PROJECT #: 21-044  
ISSUE DATE: 04/13/2022  
TLL: Author | MWM: Checker

**SITE PLAN**

**C101**



# YRW-2-800 LED Series



## Features and Characteristics

Alumilite designs reliable products produced with the best available materials, and we stand behind them with superior customer service. Please contact us for more information.

**Housing:** Four heavy gauge .188 wall extruded aluminum sections interlock to form the cylinder housing. Two sections are internally welded to lower cast lens frame and two sections are bolted to mounting bracket and welded to upper lens frame.

**Lens Assembly:** Clear heat tempered glass lens are sealed in regressed cast aluminum frames. The lower frame is welded to two extruded sections which easily slides down for maintenance by removing one flush stainless steel screw. A safety chain secures the frame in place.

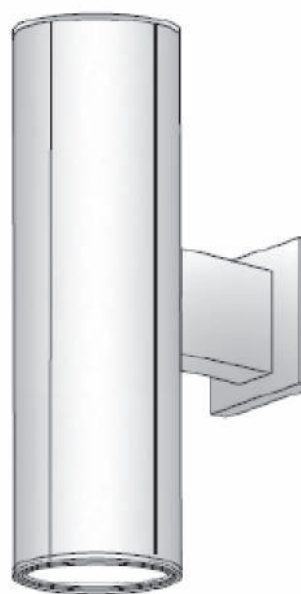
**Optical System:** Spun aluminum reflectors with semi-specular finish produces a smooth symmetrical distribution.

**Mounting Bracket:** Extruded aluminum arm is internally welded to cast back plate. Arm is bolted to housing with two 3/8" bolts. Steel zinc plated bracket mounts to wall surface and is attached to the cast plate with two stainless steel fasteners.

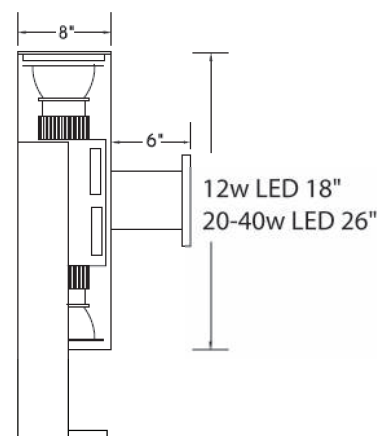
**Module/Driver:** Cree LED modules are incased in a cast aluminum housing and sealed with diffused lens. They provide industry-leading efficacy (steady state) of up to 97 lm/W for 12w/1250lm, 20w/2000lm, 30w/3000lm and 108 lm/W for the 40w/4000lm. Available in 3000, 3500 and 4000k with minimum CRI of 90. Drivers have universal voltage and 0-10v dimming.

**Finish:** Polyester powder coating on all metal parts. Color to be specified.

**Listing:** Luminaire is ETL listed for wet locations.



W1



## Specifications

Series	Wattage/Lamp	Volts
YRW-2	12w/LED = 812/LED	UV
YRW-2	20w/LED = 820/LED	UV
YRW-2	30w/LED = 830/LED	UV
YRW-2	40w/LED = 840/LED	UV

Options	Finish
3000k = 30k	BZ = Bronze
3500k = 35k	BK = Black
4000k = 40k	WH = White
PH = Photo Cell	SL = Silver
PG = Prismatic Glass	CC = Custom Color
OB = Open Bottom	

## Example

40 Watt, LED, 120 Volts, 4000k, Bronze  
YRW-2-840/LED-120v/40k/BZ

**Job Name:**
 Vernon Township FD #432  
 Architect: DELV Design (Indianapolis)  
 Engineer: Advanced Engineering Consultants
**Catalog Number:**
 RN-D-2-2-10-4K8-AS-CL-UNV-  
 \*\*\*-W

Notes:

**Type:****W3**

INDY22-99077


**RND**  
 LINEAR MOUNT
**FEATURES**

- 2', 3', 4', 6' & 8' Housing Lengths
- Sections can be joined for runs up to 150' with seamless lens
- IP66 Rated
- Symmetric, Asymmetric, Wall Graze & Wall Wash Distributions
- "L", "T" & "X" Illuminated connectors for custom shapes
- Output up to 1,500 lm/ft
- Surface, fixed arm, adjustable arm, pendant, wall & mullion mounting options

**CONTROL TECHNOLOGY****SPECIFICATIONS****CONSTRUCTION**

- The housing endcaps are die-cast while the rest of the housing is extrusion AL6063-T5
- Standard configurations have an extrusion acrylic lens, clear or diffused. No glass lens
- Luminaire finish consist of a five stage pretreatment regimen with a polymer primer sealer, oven dry off, and top coated with a thermoset super TGIC polyester powder coat finish

**OPTICS**

- LEDs are mounted to a FR4 printed circuit board assembly
- Optical lenses is clear extruded PMMA acrylic
- Optical array is recessed in order to shield each LED optic across the length of the aperture
- The luminaire is IP66 rated
- Secondary external lens is 1/16" diffuse acrylic

**INSTALLATION**

- Fixtures must be grounded in accordance with national, state and/or local electrical codes. Failure to do so may result in serious personal injury

**ELECTRICAL**

- Luminaires will have integral surge protection that shall be U.L. recognized and have a surge current rating of 10,000 Amps using the industry standard 8/20uSec wave and surge rating of 372J
- Integral battery backup provides emergency path of egress lighting for the required 90 minutes for 0°C to 40°C ambient temperature, excluding 2' fixture

**CONTROLS**

- Button photo control for dusk to dawn energy savings
- Photocell is factory installed in accessory housing. For multiple/continuous row applications, one fixture is supplied with a photocell to operate multiple luminaires
- 0-10V dimming leads available for use with control devices provided by others
- Dimming Occupancy Sensor-SCP

**SITESYNC™**

- SiteSync™ wireless control system for reduction in energy and maintenance cost while optimizing light quality 24/7. See ordering information or visit [www.hubbellighting.com/products/sitesync](http://www.hubbellighting.com/products/sitesync) for more details

**NX DISTRIBUTED INTELLIGENCE™**

- Hubbell Control Solutions' NX Distributed Intelligence™ lighting control platform utilizes a Distributed Network Architecture (DNA) that connects intelligent devices including luminaires, controllers, panels, occupancy sensors, photocells, wall switches and dimmers, creating a system with an unmatched level of reliability, scalability and simplicity
- Photocell adapter includes an internal twist lock receptacle. Photocell by others

**CERTIFICATIONS**

- Listed to UL1598 and CSA C22.2#250.0-24 for wet locations and -25°C to 40°C ambient temperature
- IP66 Rated
- IP68 Rated Connector Cables
- RoHS Compliant
- ANSI C136.31-2010 Vibration tested and compliant 1.5G
- IEC 66262 Mechanical Impact Code IK08
- This product qualifies as a "designated country construction material" per FAR 52.225-11 Buy American-Construction Materials under Trade Agreements effective 5/29/2020. [See Buy American Solutions](http://www.hubbellighting.com/en/warranty)

**WARRANTY**

- See <https://www.hubbell.com/hubbellighting/en/warranty> for additional information

KEY DATA	
LUMEN RANGE	823-14,232
WATTAGE RANGE	13-163
EFFICACY RANGE (LPW)	50-115
LIFE (HOURS)	NA
INPUT CURRENT RANGE (mA)	320-2,000 mA
EPA	0.74-2.93

 DATE: \_\_\_\_\_ LOCATION: \_\_\_\_\_  
 TYPE: \_\_\_\_\_ PROJECT: \_\_\_\_\_  
 CATALOG #: \_\_\_\_\_
**PURSUIT DOWN**

Pursuit Direct

**RELATED PRODUCTS**

RNI

RND

RNR

**Job Name:**
 Vernon Township FD #432  
 Architect: DELV Design (Indianapolis)  
 Engineer: Advanced Engineering  
 Consultants
**Catalog Number:**

TRP2-24L-30-4K7-3-UNV-\*\*\*

**Type:****W4A**

Notes:

INDY22-99077


 DATE: \_\_\_\_\_ LOCATION: \_\_\_\_\_  
 TYPE: \_\_\_\_\_ PROJECT: \_\_\_\_\_  
 CATALOG #: \_\_\_\_\_

# GEOPAK Series 2

SIZE 2 - TRP2/QSP2/RD12

**FEATURES**

- Mid sized architectural wallpacks in three stylish shapes
- Capable of replacing up to 400w HID luminaires
- Type I, II, III and IV distributions for a wide variety of applications
- Integral battery backup options
- Control capabilities offer additional energy savings options
- Zero uplight distributions

**RELATED PRODUCTS**
[RD11 GeoPak](#)
[TRP1 GeoPak](#)
[QSP1 GeoPak](#)
**SPECIFICATIONS****CONSTRUCTION**

- Die-cast aluminum housing and door
- Seven powder coat standard finishes, plus custom color options

**OPTICS**

- 24 or 32 high power LEDs deliver up to 10,800 lumens
- Up to 146 lumens per watt
- Different lenses offer a variety of distribution patterns - Type I, II, III and IV (Forward throw)
- 3000K - 70 CRI, 4000K - 70 CRI and 5000K - 70 CRI, CCT nominal

**INSTALLATION**

- Quick-mount adapter with gasket seal provides easy installation to wall or to recessed junction box (4" square junction box). Fixture attaches by two Allen-head hidden fasteners for tamper resistance
- Black box accessory available for surface conduit application

**ELECTRICAL**

- Optional Dual Drivers & Dual Power Feeds for 50, 70 and 90 watt versions
- 120-277, 347 and 480 voltage, 50/60Hz
- Power factor  $\geq 90\%$
- THD (Total Harmonic Distortion)  $<20\%$
- Ambient operating temperature  $-40^{\circ}\text{C}$  to  $40^{\circ}\text{C}$
- 20kA surge protection (series); Automatically takes fixture off-line when device is consumed

**ELECTRICAL (CONTINUED)**

- Integral Battery Backup provides emergency lighting for the required 90 minute path of egress
- Includes a long-life Lithium Iron Phosphate battery with optional battery heater for cold temperature application
- Utilizes 4 LEDs in emergency mode with 657 lumens. Each of the 4 LEDs in emergency are designed to function independently in the unlikely event of a single LED malfunction
- Spectron® self-testing/self-diagnostic electronics are included standard
- Independent dedicated driver and LED array for battery/emergency mode operation

**CONTROLS**

- Drivers are 0-10V dimming standard
- Universal button photocontrol for dusk to dawn energy savings
- Photocell and occupancy sensor options available for complete on/off and dimming control

**CERTIFICATIONS**

- IP65 rated housing
- DesignLights Consortium® (DLC) qualified. Please refer to the DLC website for specific product qualifications at [www.designlights.org](http://www.designlights.org)
- Zero uplight (UO), dark sky, neighbor friendly
- Drivers IP66 and RoHS compliant
- This product qualifies as both (i) a "domestic construction material" per FAR 52.225-9 Buy American-Construction Materials and a "COTS item" per FAR 52.101 and (ii) a "designated country construction material" per FAR 52.225-11 Buy American-Construction Materials under Trade Agreements effective 06/03/2020. See [Buy American Solutions](http://Buy American Solutions)

**WARRANTY**

- 5 year limited warranty
- See [HLI Standard Warranty](#) for additional information

**KEY DATA**

KEY DATA	
Lumen Range	3,200-11,000
Wattage Range	28-87
Efficacy Range (LPW)	112-146
Fixture Projected Life (Hours)	L70>60K
Weights lbs. (kg)	16-18 (7.3-8.2)